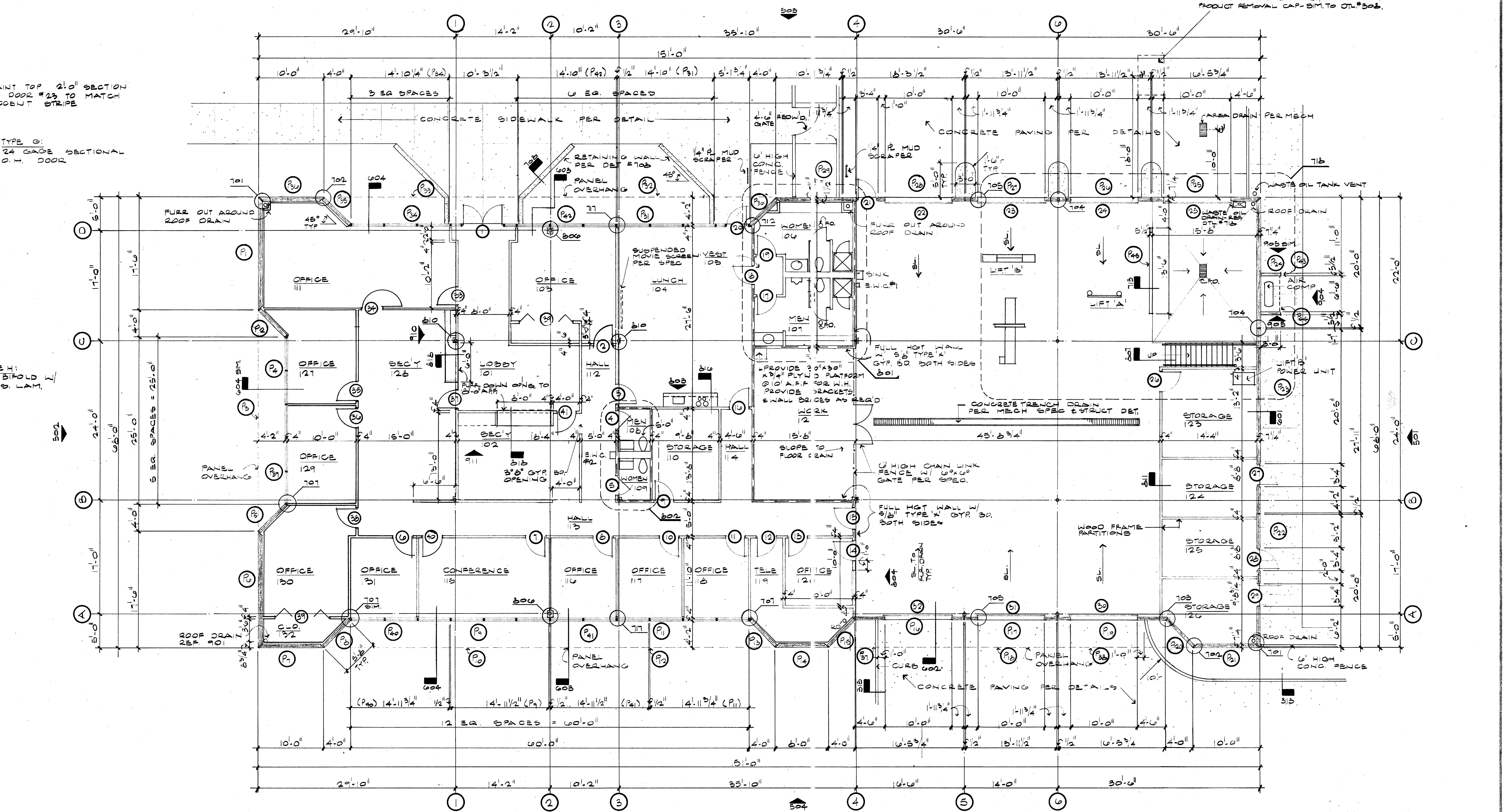
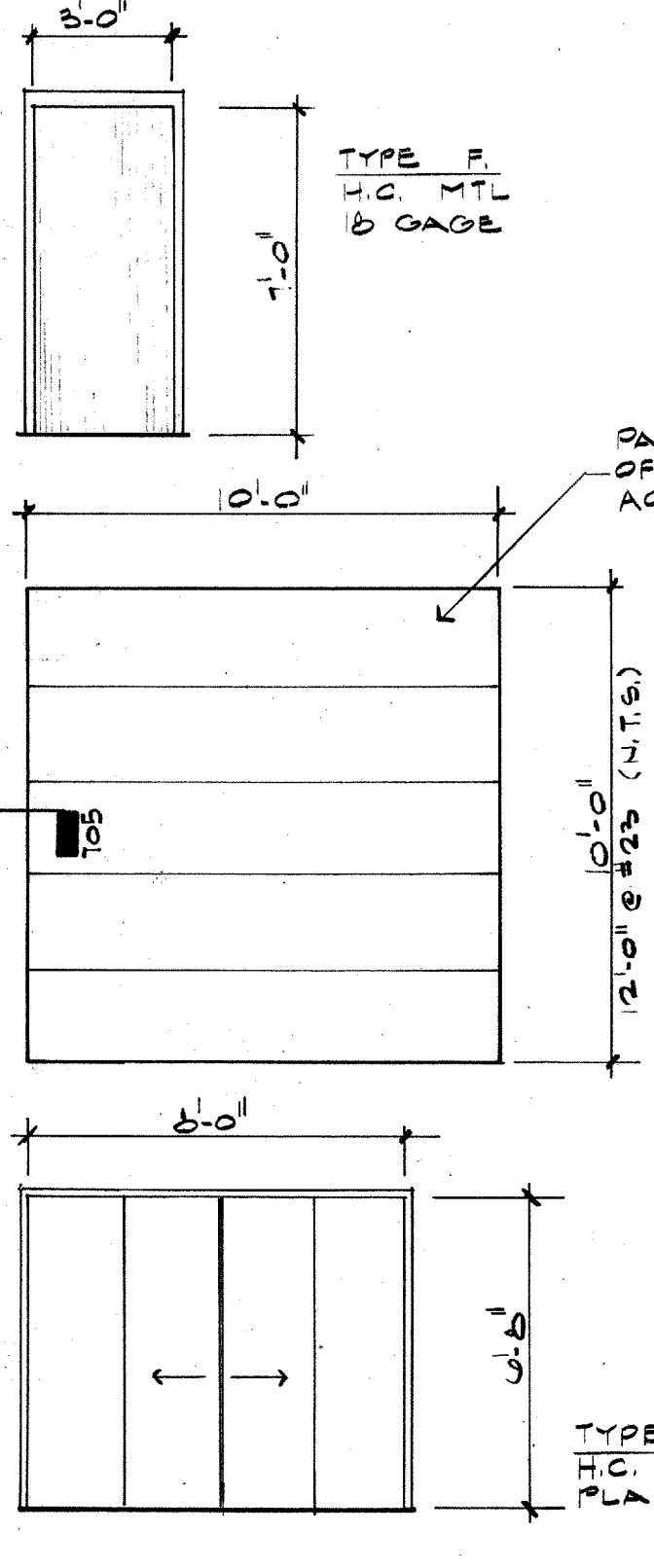


No.	Hdw.	Type	Door Size	Thk.	Material	Frame	Head	Jamb	Sill	Remarks
1	A		6'-0" x 7'-10 3/4"	1 3/4"	ALUM & TEMP GLASS	ALUM.	6065M		715	REFER TO SPECS FOR
2	C		3'-0" x 6'-8"		H.C. WD W/ PLAS. LAM.	KNOC				HARDWARE SCHEDULE
3	C									
4	D		2'-8" x 6'-8"		S.C. WD W/ PLAS. LAM.					
5	D									
6	D		3'-0" x 6'-8"		H.C. WD W/ PLAS. LAM.					
7	C									
8	C									
9	C									
10	C									
11	C									
12	C									
13	C									
14	B				S.C. WD PAINT GRADE					DOOR SWEEP
15	B				S.C. WD W/ PLAS. LAM.					1 HR RATED, DOOR SWEEP
16	D				H.C. WD W/ PLAS. LAM.					
17	D				S.C. WD W/ PLAS. LAM.					
18	D									

No.	Hdw.	Type	Door Size	Thk.	Material	Frame	Head	Jamb	Sill	Remarks
19	D		3'-0" x 6'-8"	1 3/4"	S.C. WD W/ PLAS. LAM.	KNOC				
20	B		3'-0" x 7'-10 3/4"		ALUM & TEMP GLASS	ALUM.				
21	F		3'-0" x 7'-0"		H.C. MTL	HOL.MTL.	714	7145M	716	
22	G		10'-0" x 10'-0"		24 GAGE MTL		602	705	602	
23	G									
24	G									
25	G									
26	B		3'-0" x 6'-8"	1 3/4"	S.C. WD PAINT GRADE	KNOC				
27	F		3'-0" x 7'-0"		H.C. MTL	HOL.MTL.	714	7145M	716	
28	F									
29	F									
30	G		10'-0" x 10'-0"		24 GAGE MTL		602	705	602	
31	G									
32	G									
33	D		3'-0" x 6'-8"	1 3/4"	S.C. WD W/ PLAS. LAM.	KNOC				
34	C				H.C. WD W/ PLAS. LAM.					
35	C									
36	C									
37	D				S.C. WD W/ PLAS. LAM.					
38	C				H.C. WD W/ PLAS. LAM.					
39	H		6'-0" x 6'-8"	1 3/4"	H.C. BIFOLD					
40	C		3'-0" x 6'-8"	1 3/4"	H.C. WD W/ PLAS. LAM.					
41	D				S.C. WD W/ PLAS. LAM.					



550 GAL. WASTE OIL TANK (UNDERGROUND) PER MECH. INSTALL PER MFG. SPECS. REF. O.T.# 204. PROVIDE PRODUCT REMOVAL CAP. SIM. TO O.T.# 302.

ED I CAPE HOPKINS CLEMENTE, INC.
PLANNING ARCHITECTURE INTERIOR DESIGN
TWO NORTH-PARK EAST, 120 · DALLAS, 75201-1945
AMERICAN INSTITUTE OF ARCHITECTS AMER. SOC. CONSULTING ENGINEERS

City of Addison
PUBLIC WORKS SERVICE CENTER
Dooley Road
Addison Texas

ISSUE DATE
01/12/80
REVISIONS
01/18/80
ADD 01/18/80

SHEET NUMBER
4

7800000