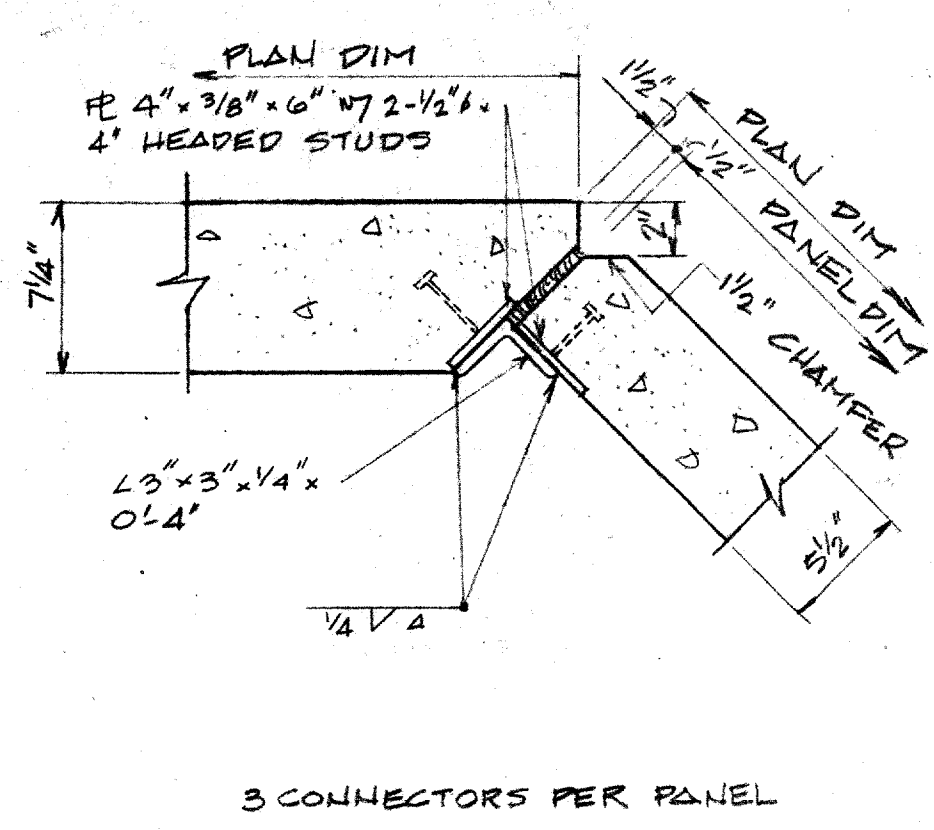
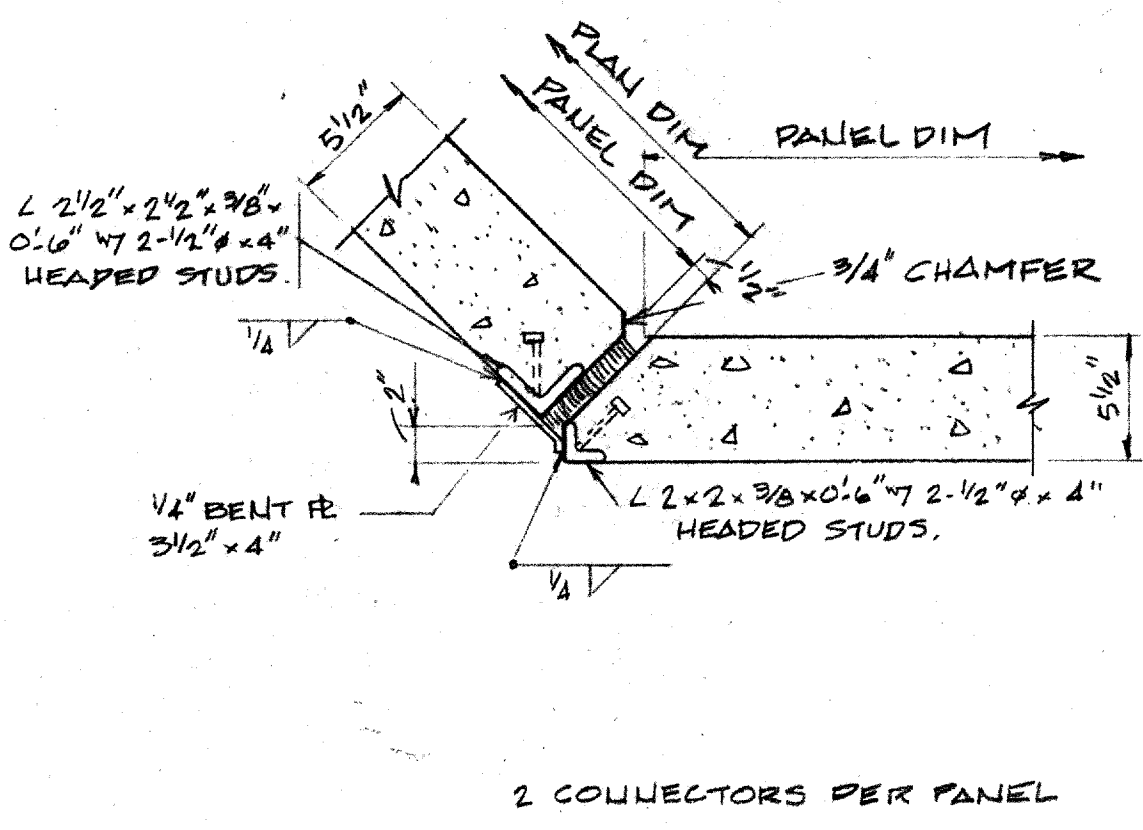


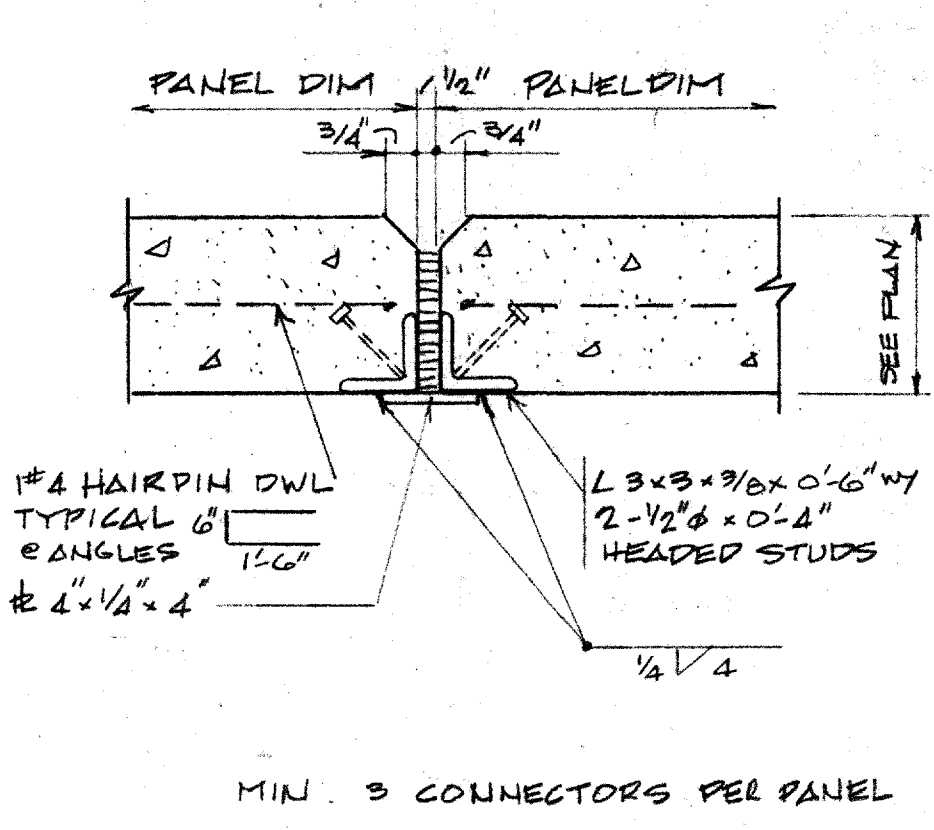
DETAIL 1  
1/4" = 1'-0"



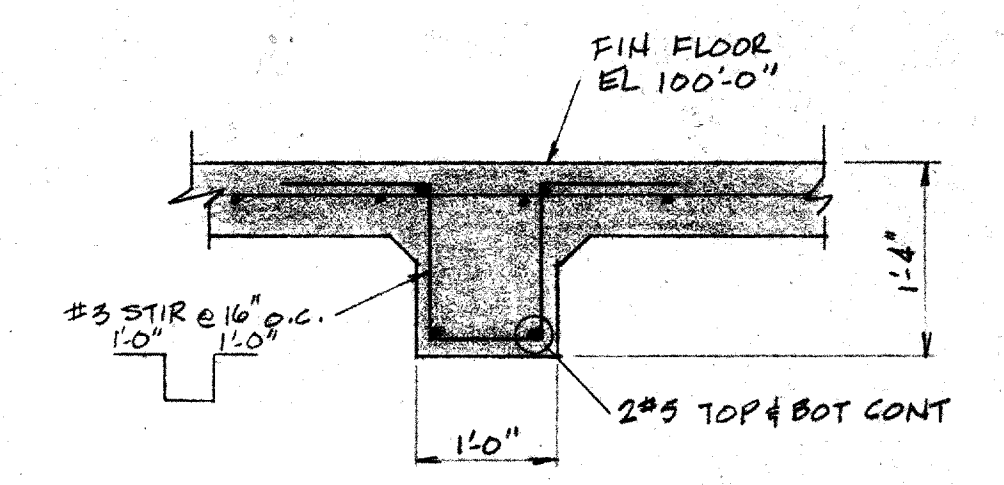
DETAIL 2  
1/4" = 1'-0"



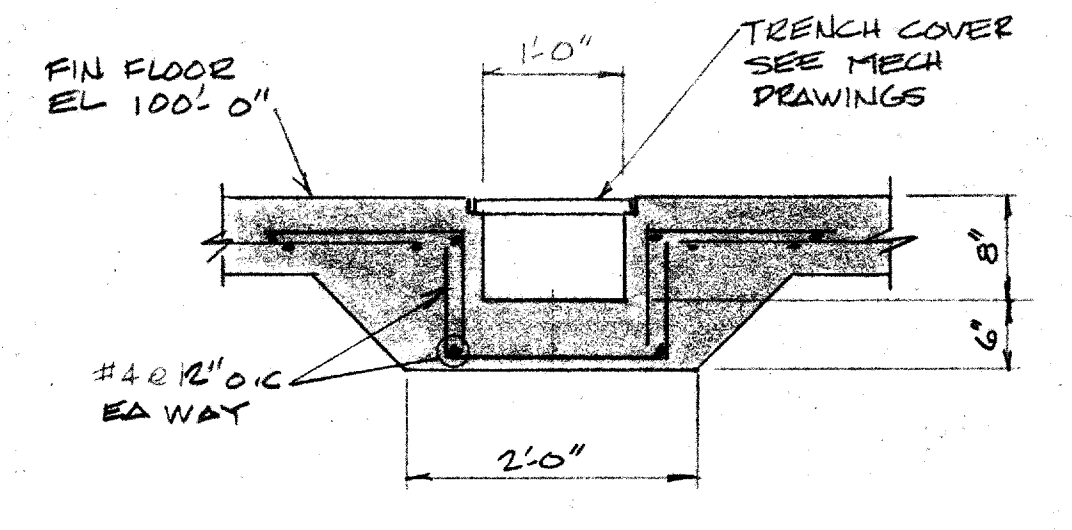
DETAIL 3  
1/4" = 1'-0"



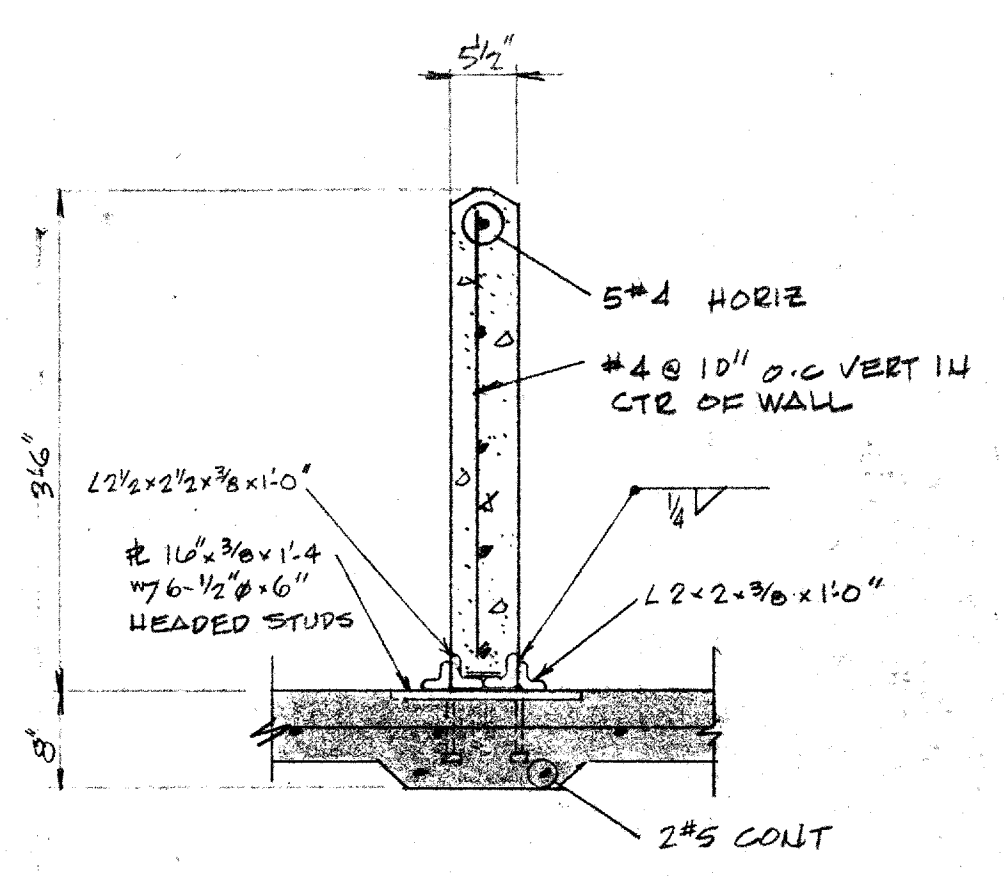
DETAIL 4  
1/4" = 1'-0"



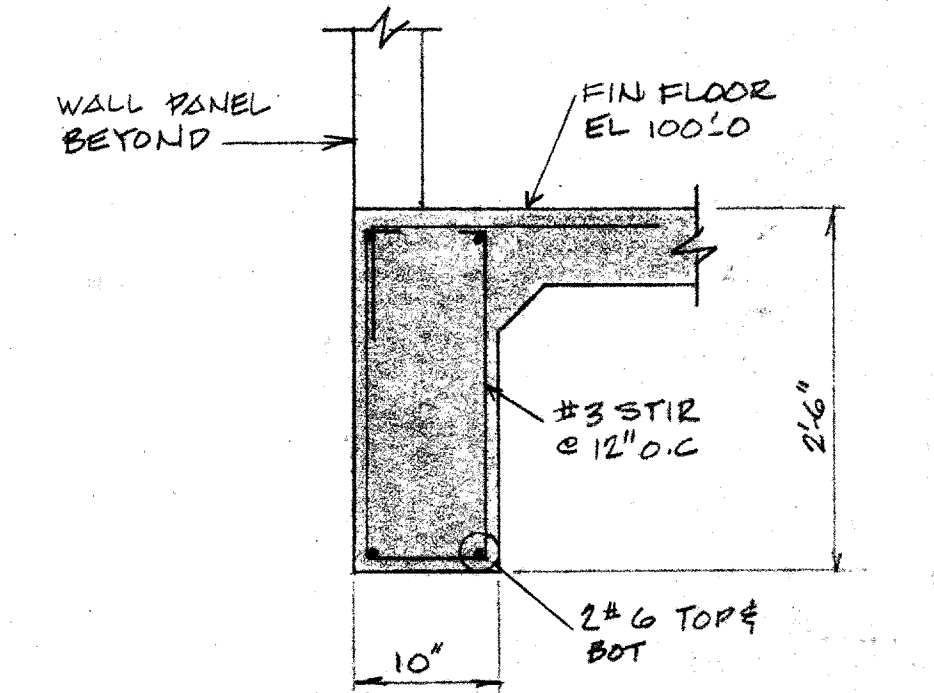
SECTION 5  
3/4" = 1'-0"



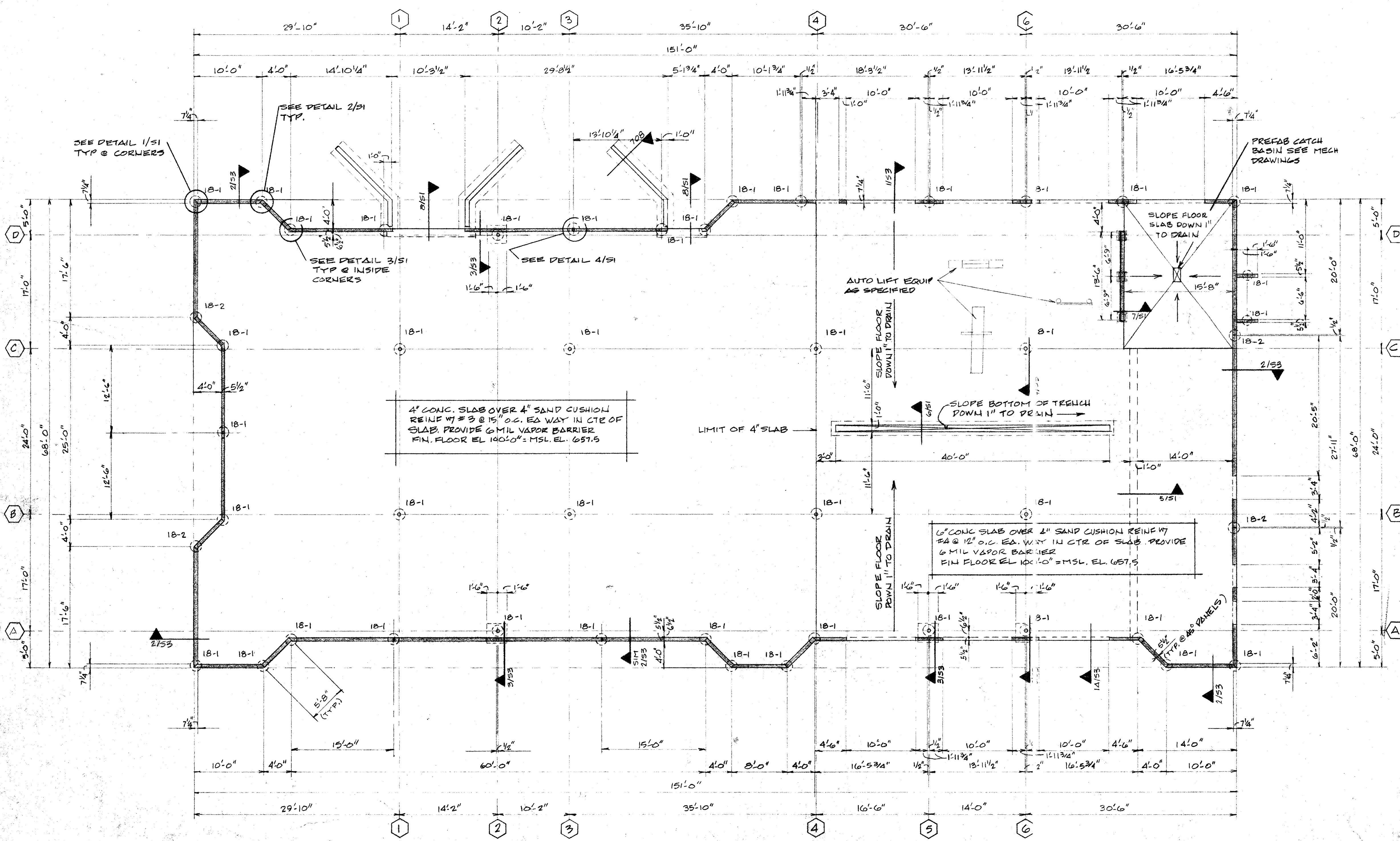
SECTION 6  
3/4" = 1'-0"



SECTION 7  
3/4" = 1'-0"



SECTION 8  
3/4" = 1'-0"



FOUNDATION PLAN  
1/8" = 1'-0"

JERRY D. KASSAW  
Consulting Engineers  
1417 S SE Loop 323  
Tyler, Texas 75701  
214/595-2151

City of Addison  
PUBLIC WORKS SERVICE CENTER  
Dooley Road  
Addison Texas

EDITION  
CAPE, HOPKINS, CLEVELAND  
ARCHITECTURE, PLANNING, URBAN DESIGN  
TWO NORTH PARK EAST, SUITE 100/DALLAS, TEXAS 75231/TEL 214-750-1845  
AMERICAN INSTITUTE OF ARCHITECTS  
CONSTRUCTION SPECIFICATIONS INSTITUTE INTERNATIONAL SOLAR ENERGY SOCIETY

ISSUE DATE  
6/12/00  
REVISIONS

SHEET NUMBER  
S1