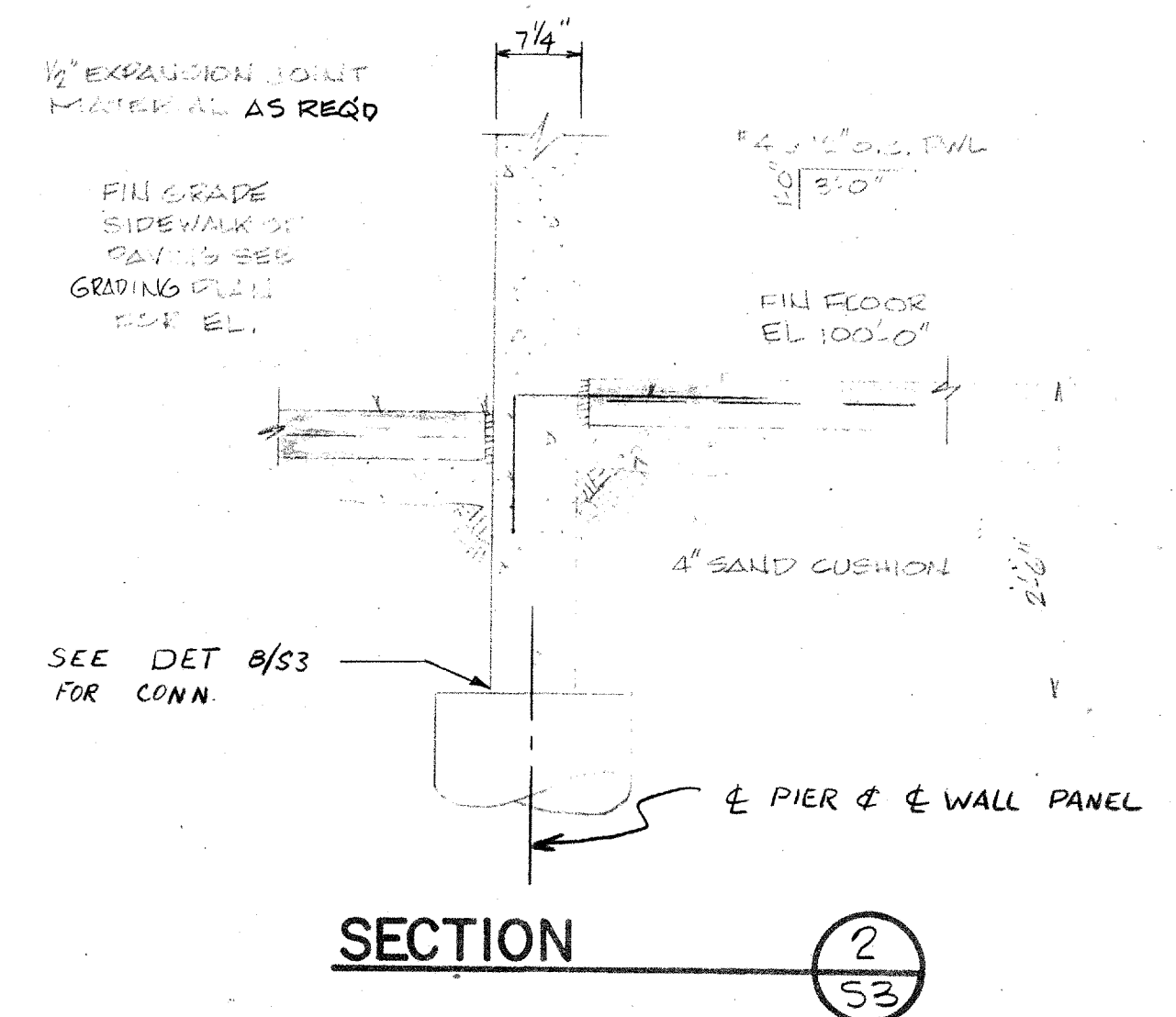
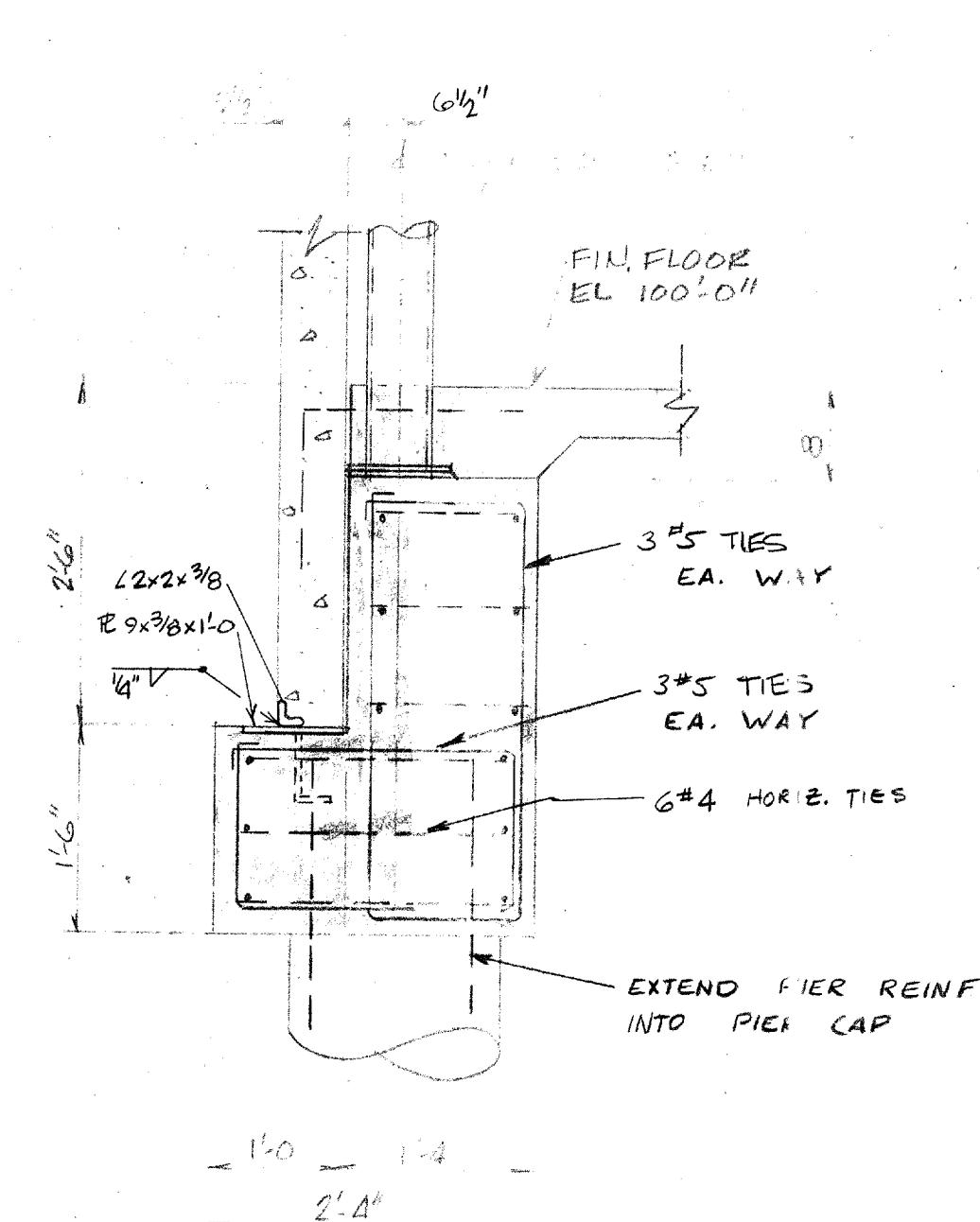


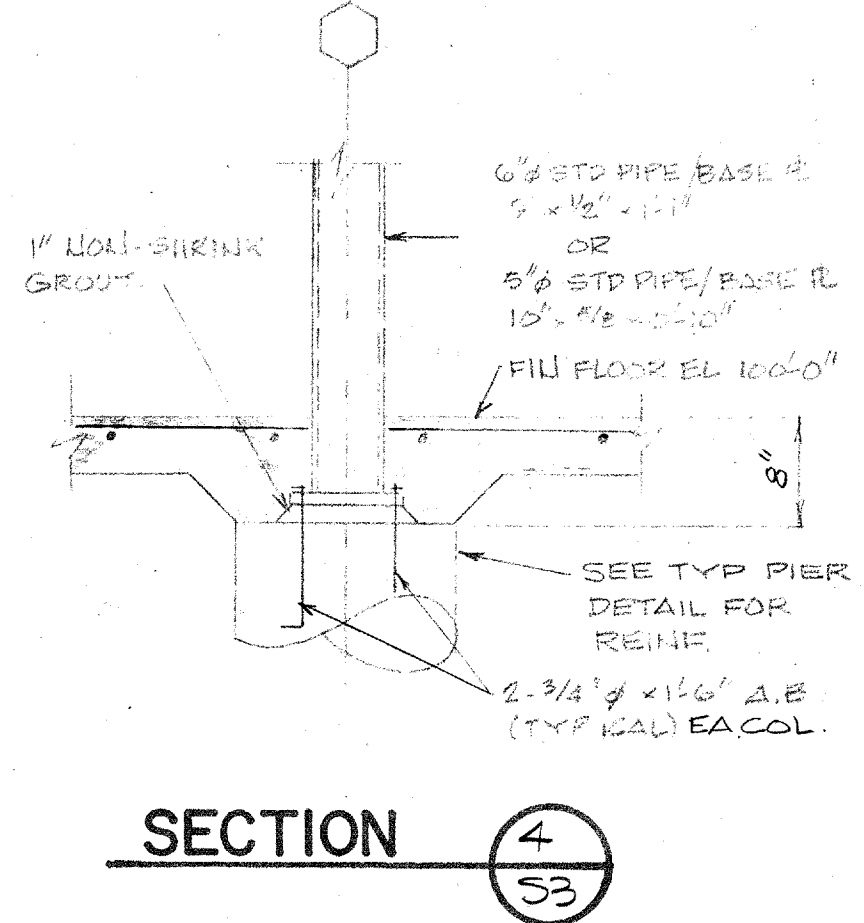
SECTION 1
S3



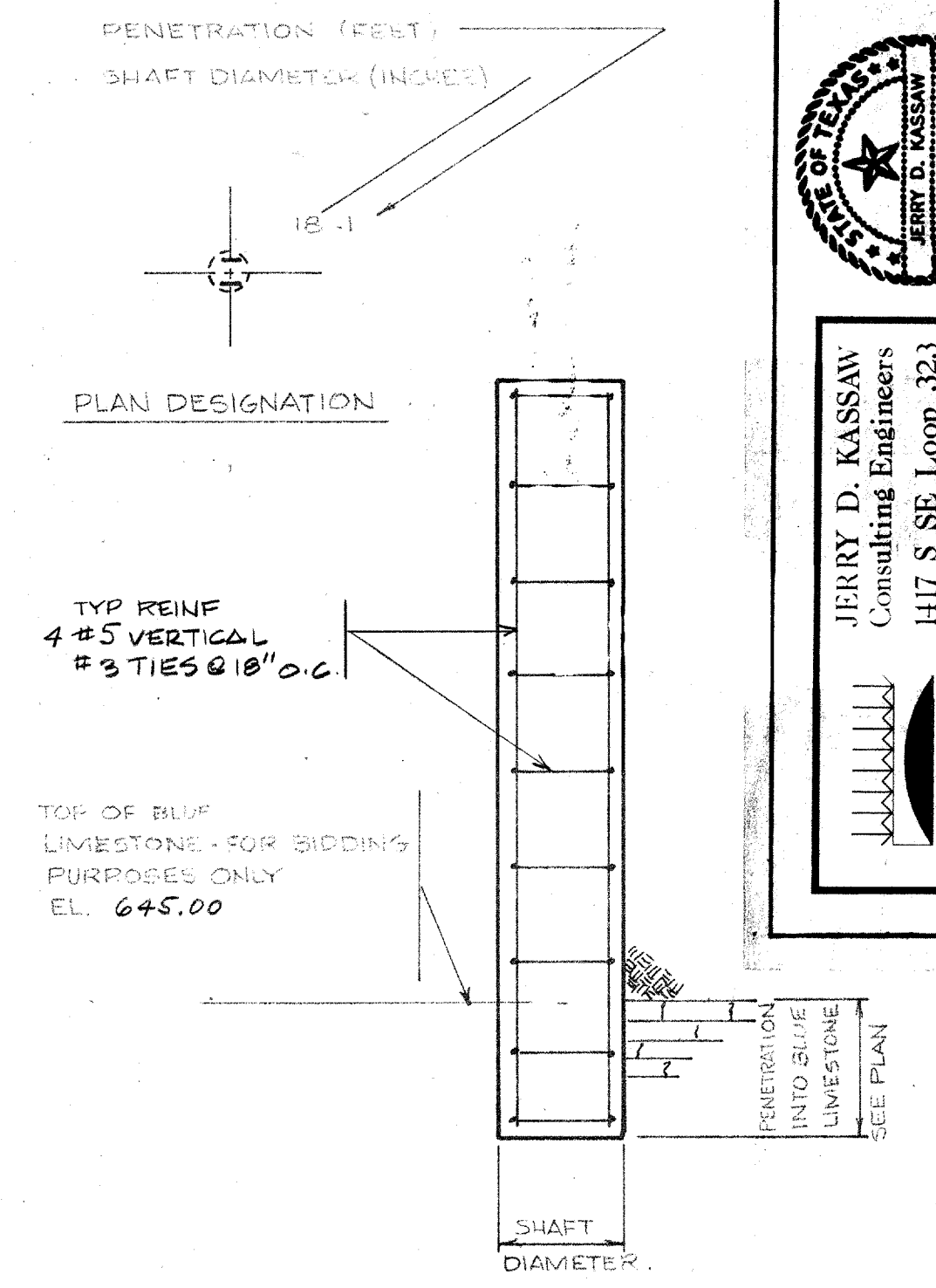
SECTION 2
S3



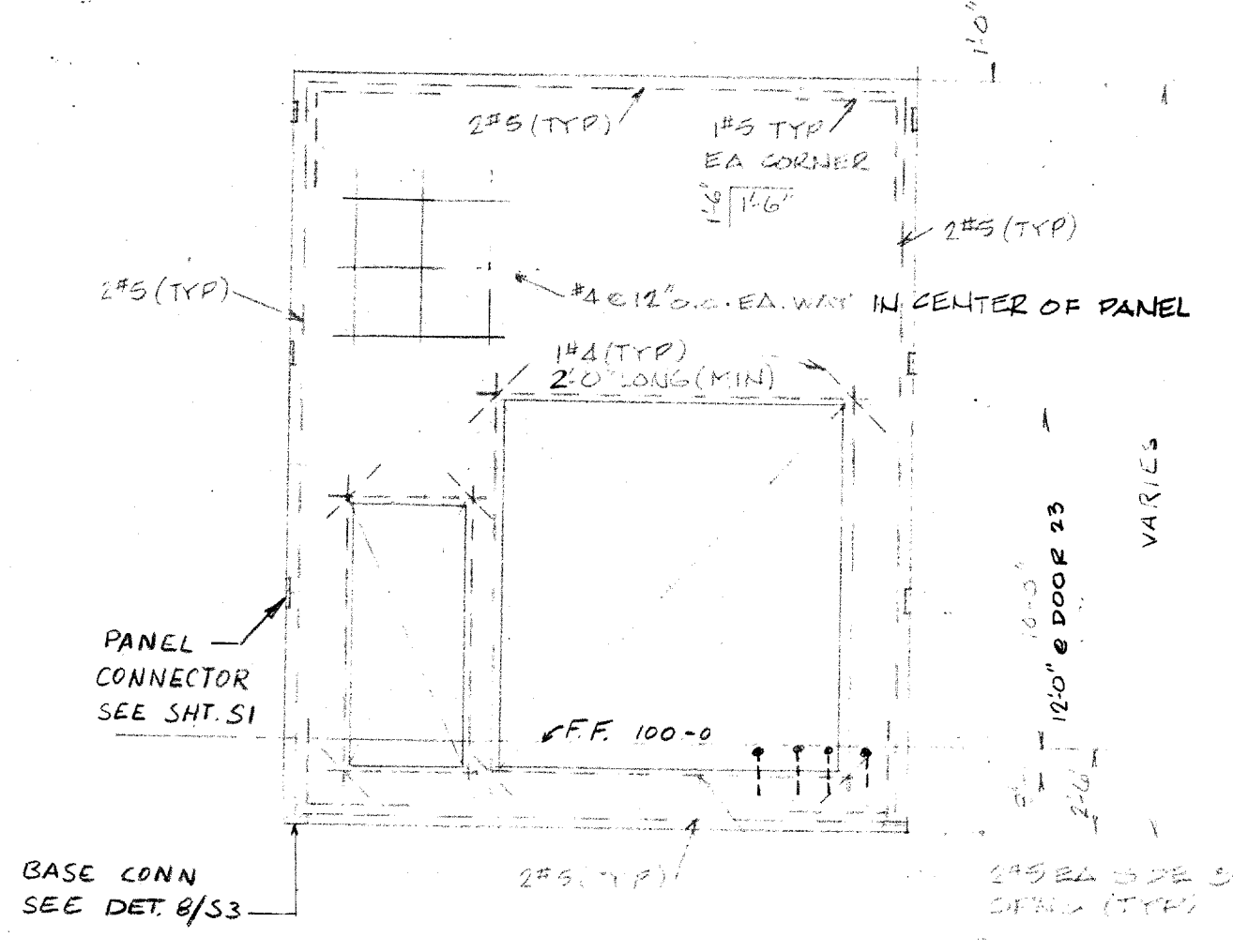
SECTION 3
S3



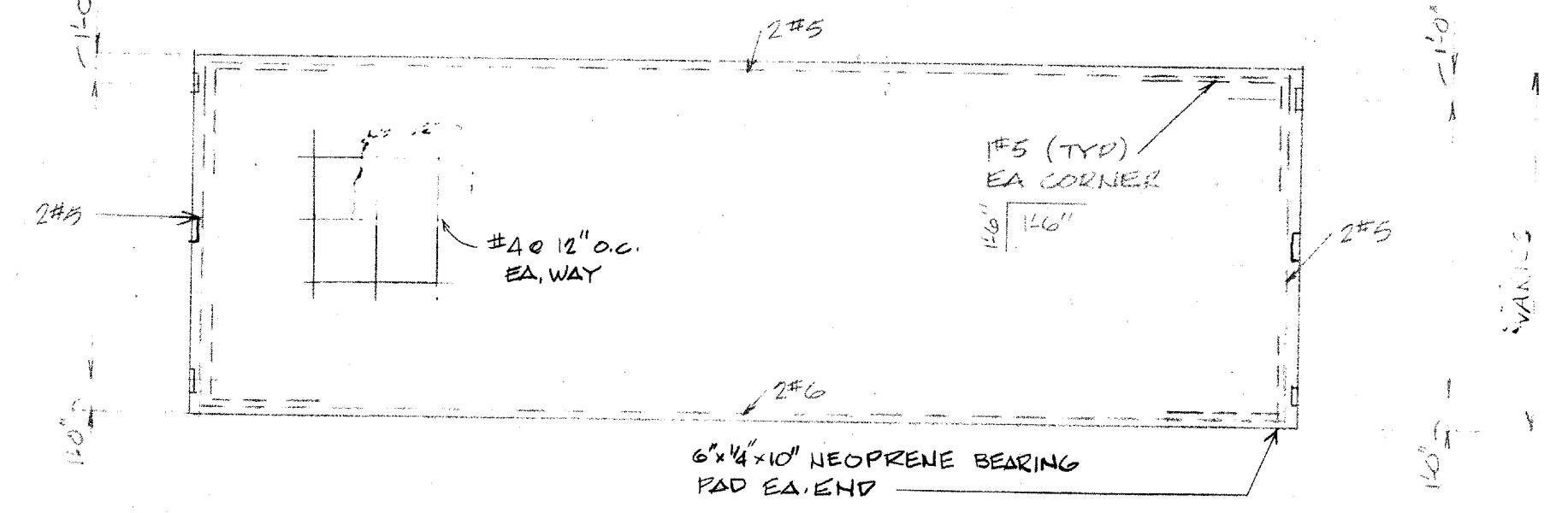
SECTION 4
S3



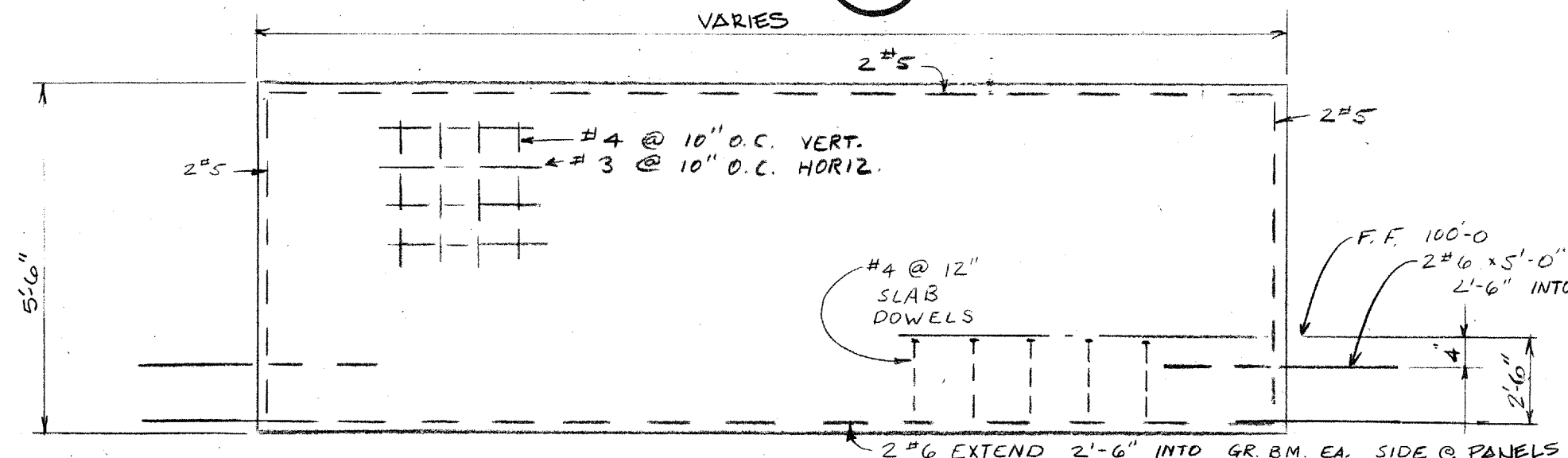
TYPICAL PIER DETAIL 5
S3



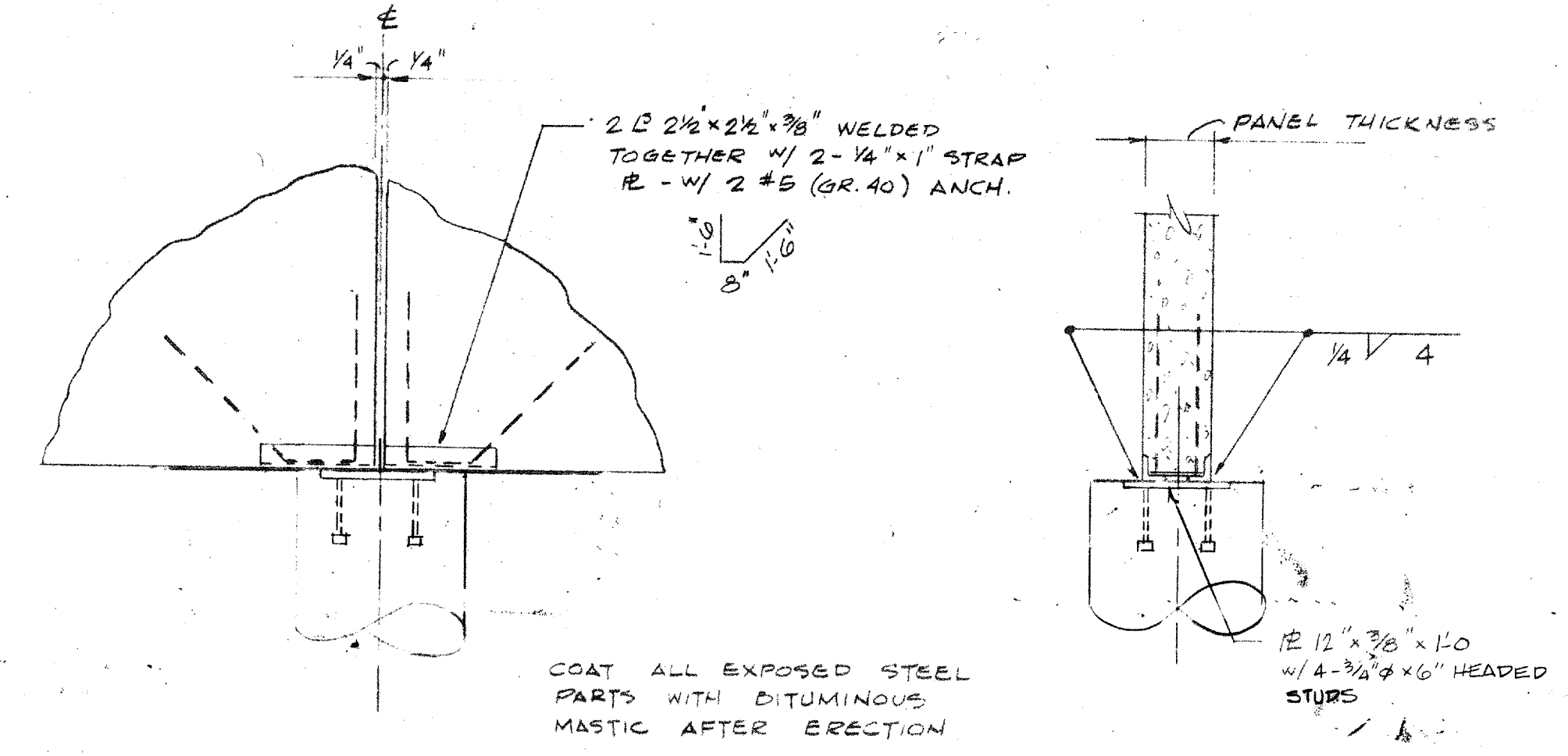
TYPICAL WALL PANEL DETAIL 6
S3



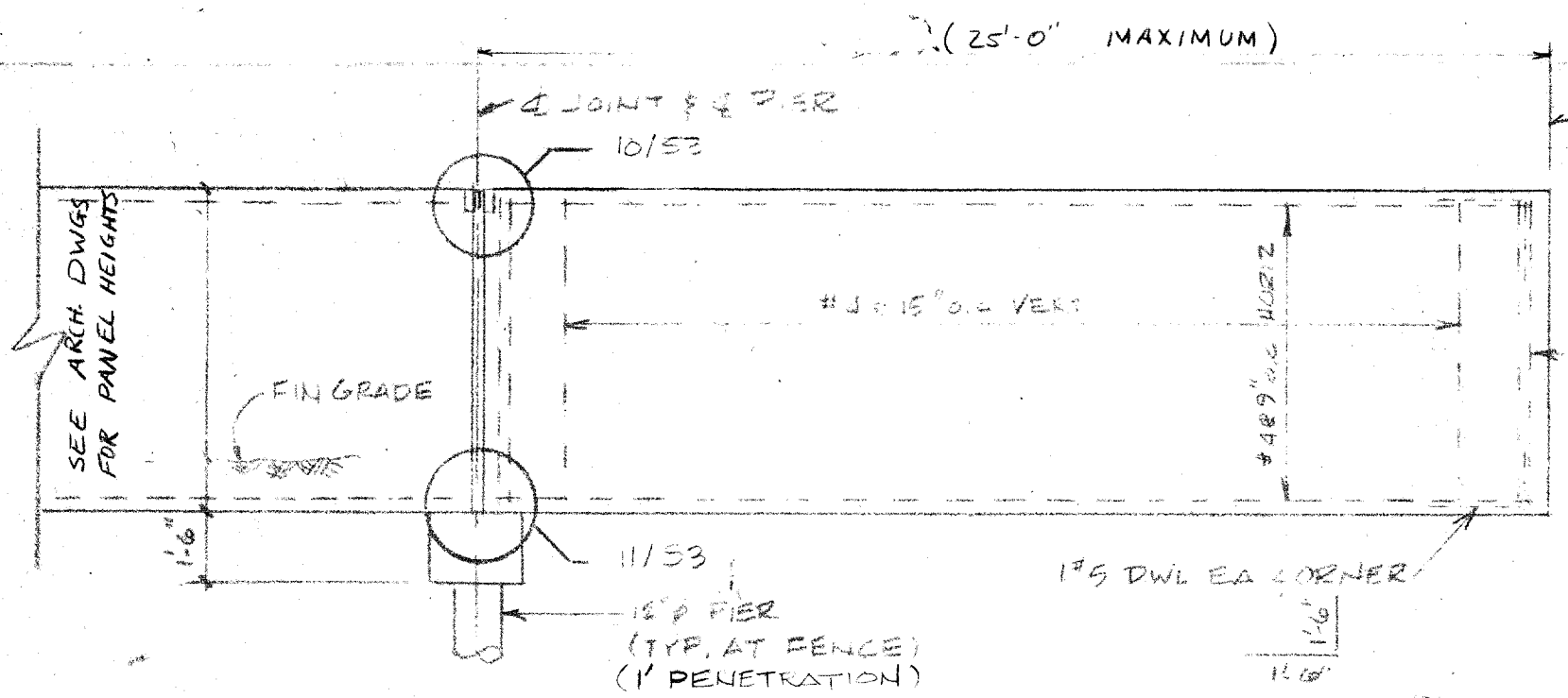
TYPICAL FASCIA BEAM PANEL DETAIL 7
S3



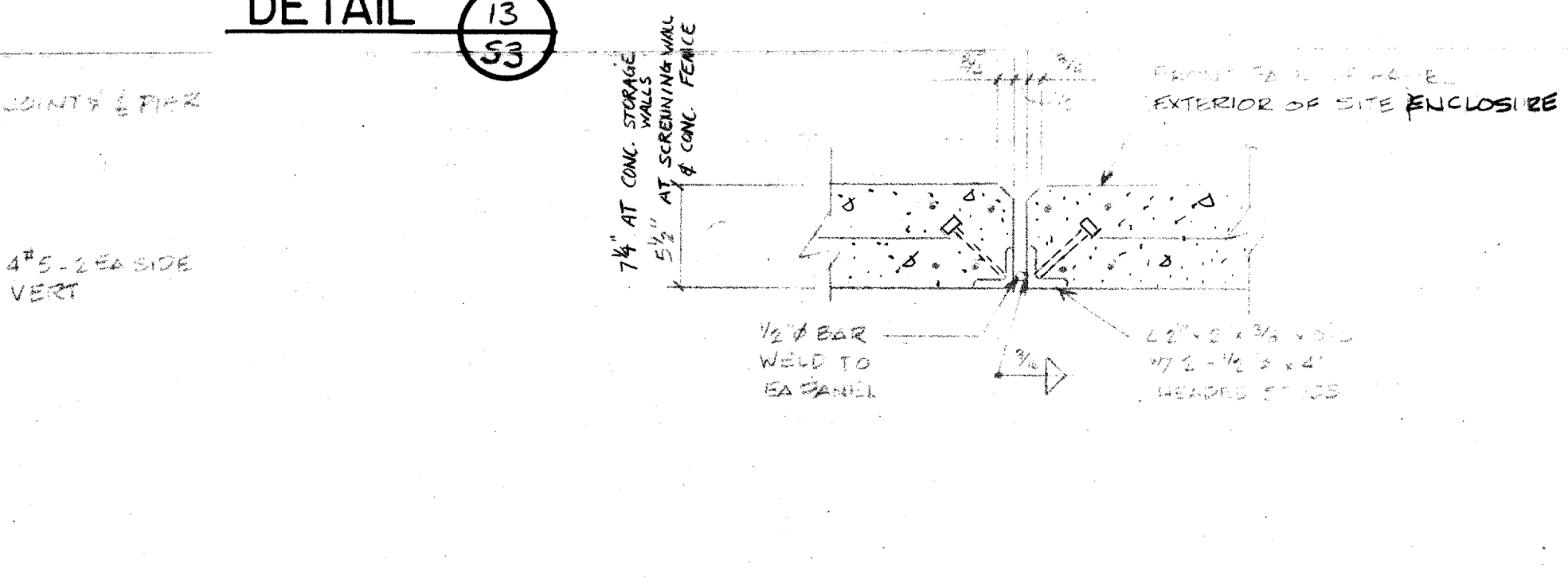
TYP WALL PANEL AT EARTH BERM DETAIL 13
S3



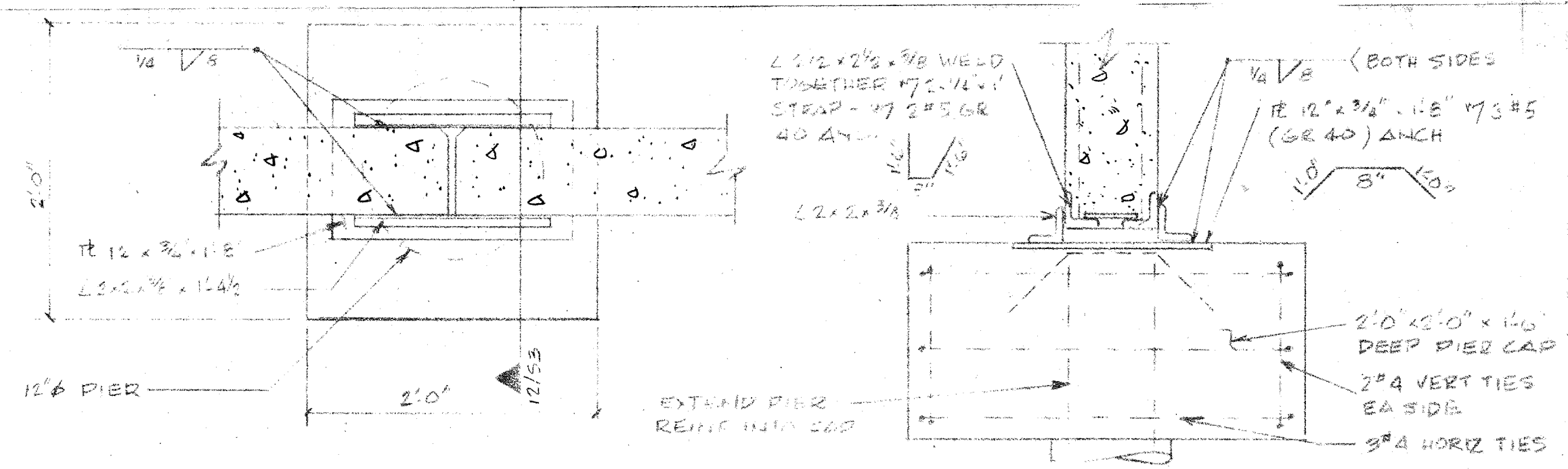
TYP. PANEL BASE CONNECTION 8
S3



TYP ELEVATION 9
S3



DETAIL 10
S3



SECTION 12
S3

JERRY D. KASSAW
Consulting Engineers
117 S SE Loop 323
Tyler, Texas 75701
214/595-2151

STRUCTURAL/CIVIL

City of Addison
PUBLIC WORKS SERVICE CENTER
Dooley Road
Addison Texas

ED I CAPE, HOPKINS, CLEMENT ARCHITECTURE, PLANNING, URBAN DESIGN TWO NORTH PARK EAST, SUITE 120/DALLAS, TEX 75231/TEL: 214-750-1945 AMERICAN INSTITUTE OF ARCHITECTS AMERICAN SOCIETY OF CONSULTING ENGINEERS CONSTRUCTION SPECIFICATIONS INSTITUTE INTERNATIONAL SOLAR ENERGY SOCIETY

ISSUE DATE: 6/12/00
REVISIONS:
SHEET NUMBER: S3