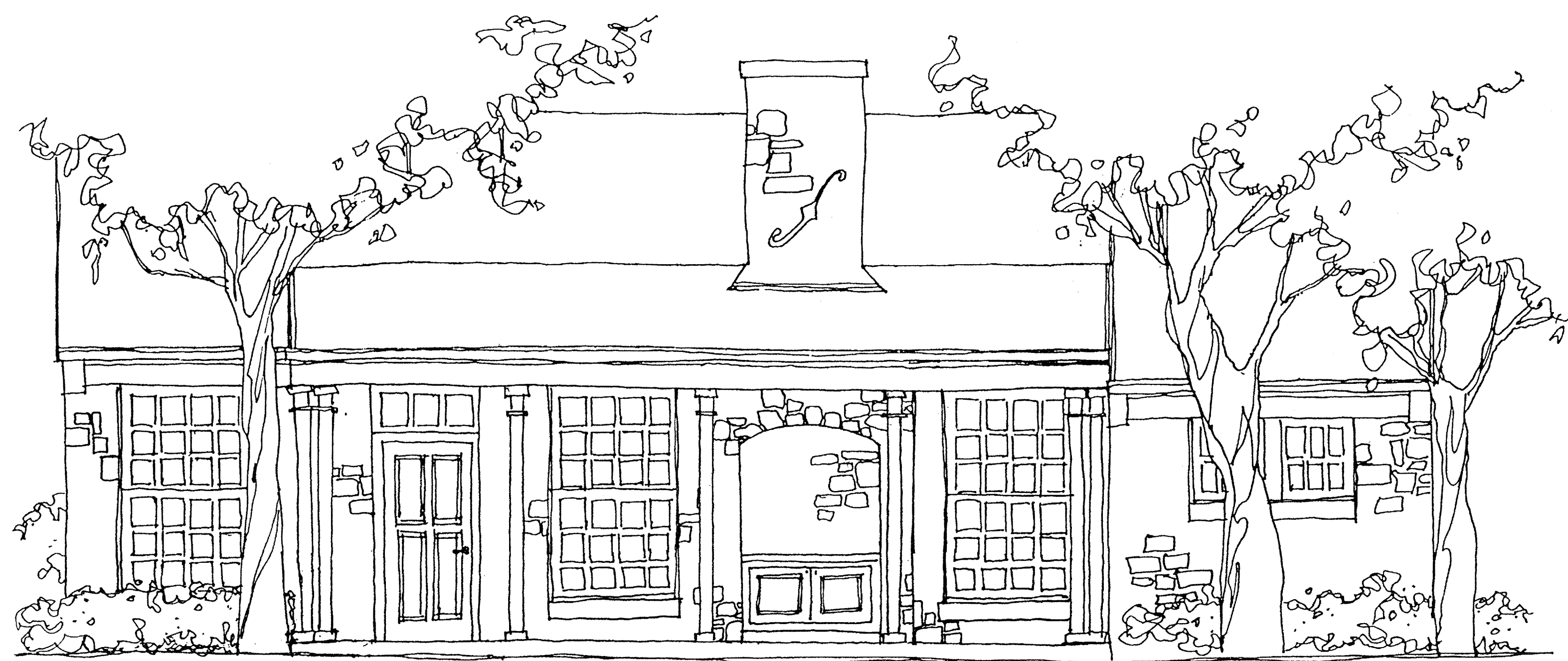


STONE  
COTTAGE

ADDISON  
TEXAS

TOWN OF  
ADDISON



# STONE COTTAGE

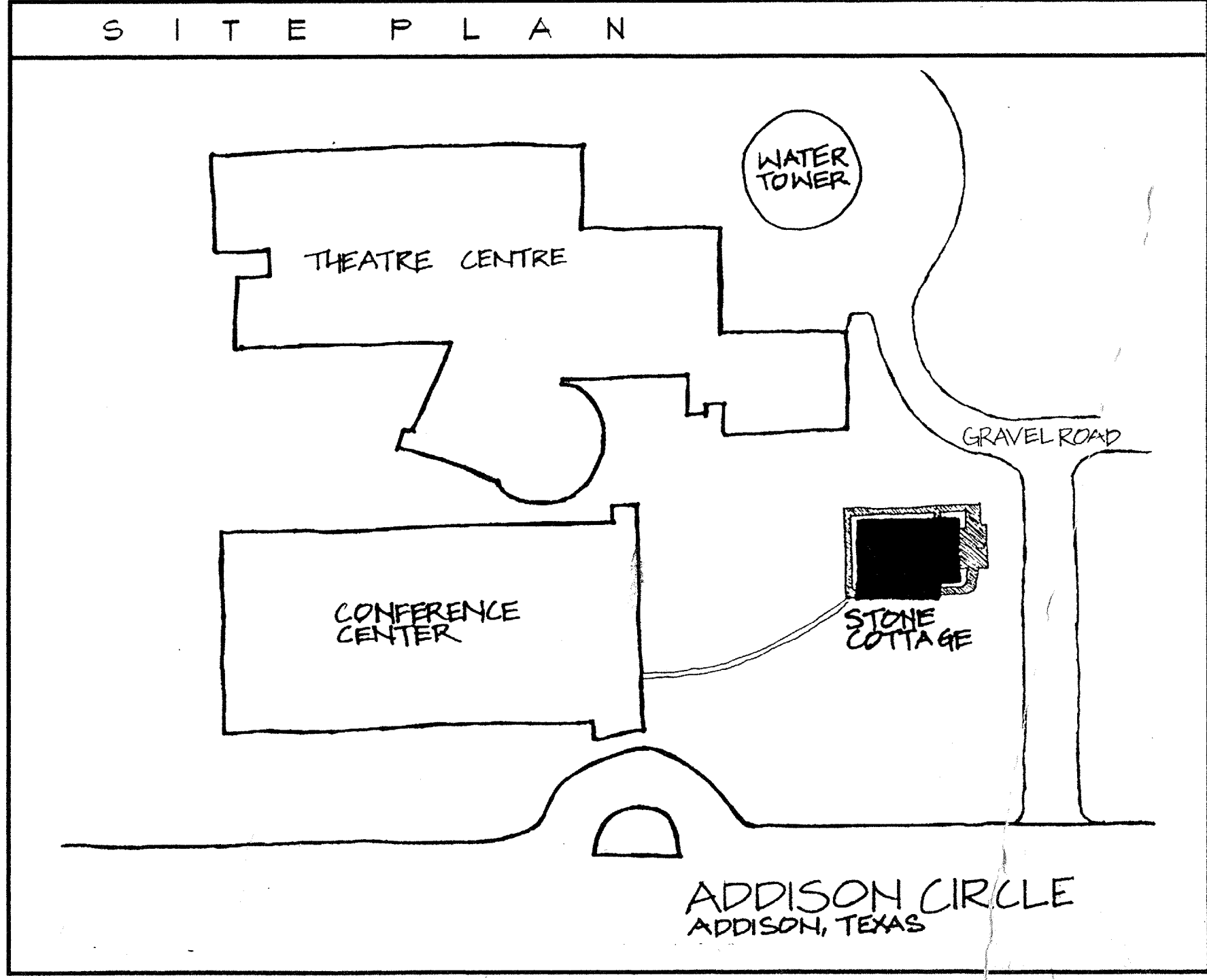
TOWN OF

# ADDISON

97.023.002

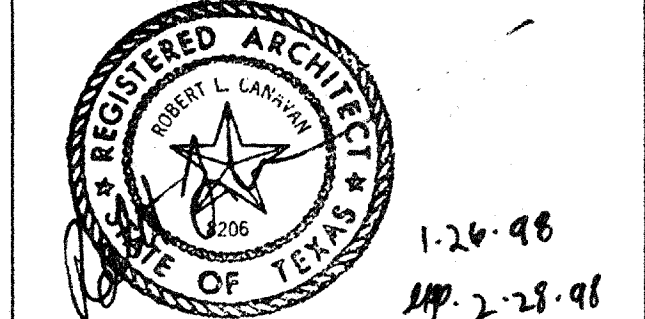
PROJECT DATA	
<b>OWNER</b> ADDISON CONFERENCE AND THEATRE CENTRE 15650 Addison Rd Addison, Texas 75248 (PH) 412 450 6203 (FX) 412 450 6213 Robert Bourstom	<b>STRUCTURAL ENGINEER</b> THE CORE GROUP 3033 Kellway Dr Suite 124 Carrollton, Texas 75006 (PH) 412 416 6116 (FX) 412 416 8111 Trent Cragin
<b>DESIGNER</b> HARRIS DESIGN ASSOCIATES, INC. 3535 Travis Street, Ste 265, LB 145 Dallas, Texas 75204 (PH) 214 526 8621 (FX) 214 522 9177 Bob Canavan, Project Architect Tracey Martinez, Project Designer	<b>LANDSCAPE ARCHITECT</b> MESA DESIGN GROUP 3100 McKinnon Street Suite 405 - LB 152 Dallas, Texas 75201 (PH) 214 871 0568 (FX) 214 871 1507 Jim Cooper
<b>MEP ENGINEERS</b> PURDY-McGUIRE, INC. 4300 Sigma Suite 200 Dallas, Texas 75244-4416 (PH) 412 234 5351 (FX) 412 234 5231 Brad Ragle	

SHEET INDEX	
A 01	COVER SHEET
A 21	DEMOLITION PLAN / CONSTRUCTION PLAN
A 22	ELECTRICAL PLAN / REFLECTED CEILING PLAN / FURNITURE PLAN
A 31	EXTERIOR ELEVATIONS
A 32	INTERIOR ELEVATIONS
A 41	INTERIOR DETAILS
A 42	EXTERIOR DETAILS
A 51	FINISH SCHEDULE / DOOR SCHEDULE
M 1	HVAC & PLUMBING PLAN
E 1	POWER & LIGHTING PLAN



TITLE  
COVER PAGE

SCALE: N/A DRAWN BY: KN  
CONSULTANTS



**NOTE TO CONTRACTOR**  
Contractor is to field verify all dimensions. Written dimensions are to have precedence over scaled dimensions. The contractor shall verify and be responsible for all dimensions and conditions on the job and RDA must be notified of any variations from the dimensions and the conditions shown on these drawings. Shop drawings must be submitted to RDA for approval before proceeding with fabrication. The contractor remains responsible for details and accuracy, for confirming and correlating all quantities and dimensions, for selecting fabrication processes, for techniques of assembly, for performing the work in a safe manner, and for adhering to all applicable codes.

PRELIMINARY  
1/21/98 REVIEW SET ISSUED

ISSUE DATE  
JANUARY 26, 1998

REVISIONS

PROJECT NUMBER  
97.023.002

SHEET NUMBER

A.0.1

HARRIS DESIGN ASSOCIATES, INC. 3535 TRAVIS STREET LB 145 SUITE 265 DALLAS, TX 75204 214 526-8621 DESIGNERS/ARCHITECTS/PLANNERS