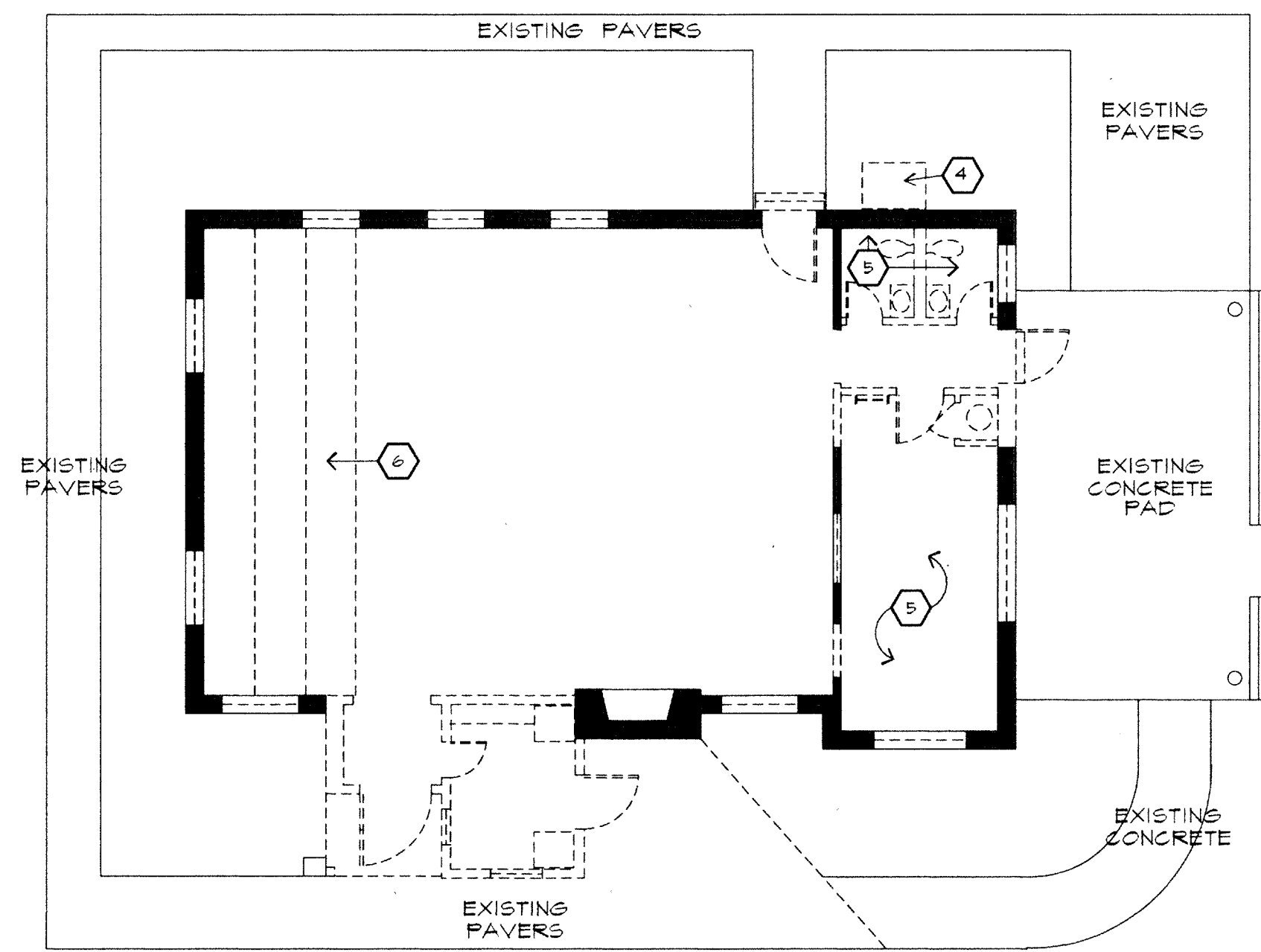


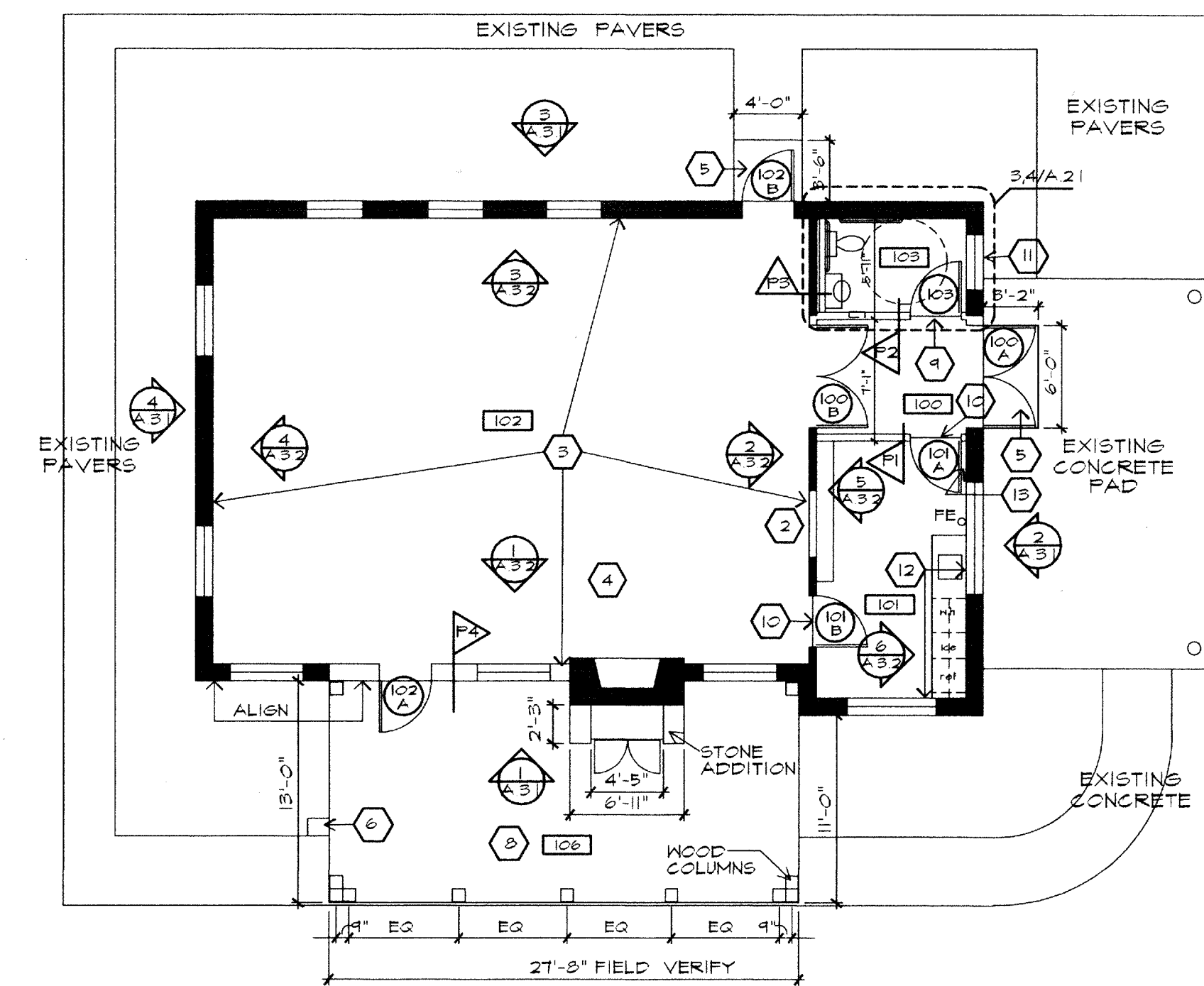
STONE
COTTAGE

ADDISON
TEXAS

TOWN OF
ADDISON



1 DEMOLITION PLAN
SCALE 1/8"=1'-0"
N:\DATA\MSDATA\ADDISON\CG\GOTTSP3.DGN



2 CONSTRUCTION PLAN
SCALE 1/8"=1'-0"
N:\DATA\MSDATA\ADDISON\CG\GOTTSP3.DGN

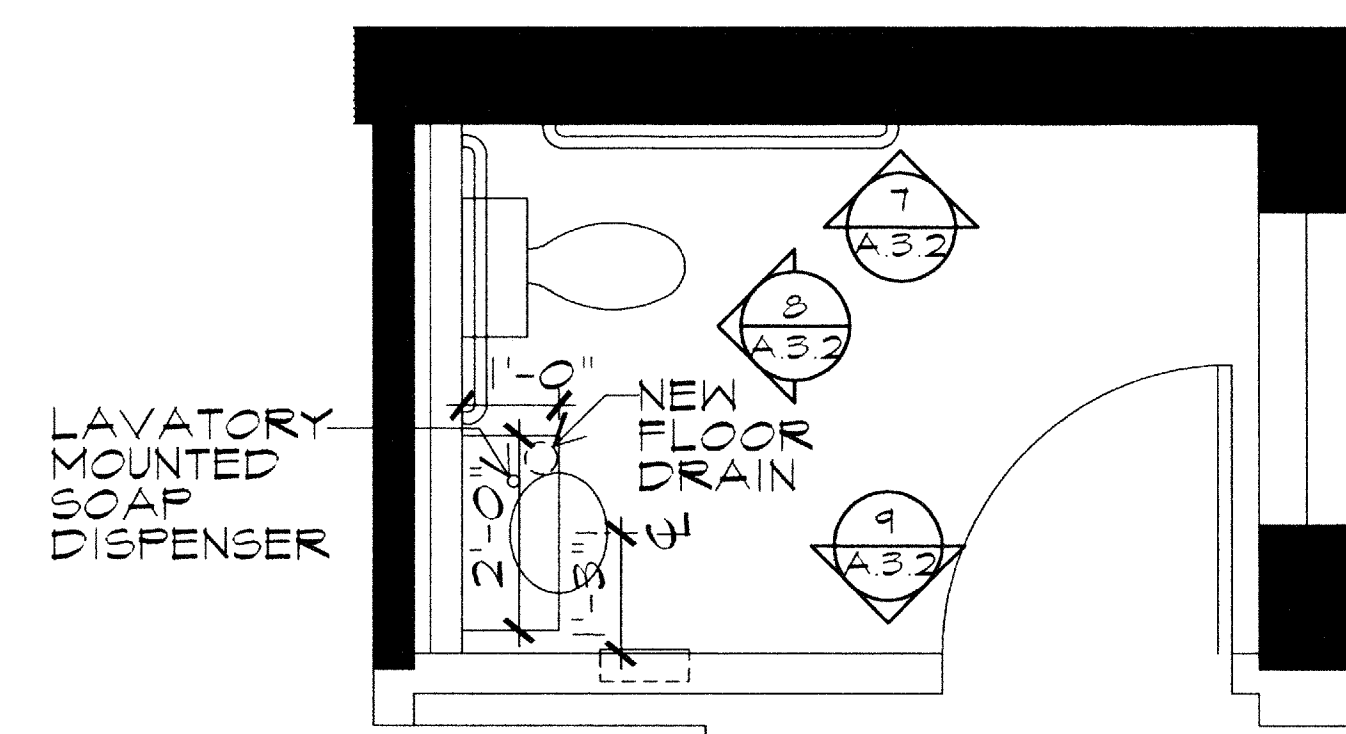


- DEMOLITION NOTES**
- 1 DEMOLISH FASCIA AND TRIM
 - 2 DEMOLISH ALL WINDOWS
 - 3 DEMOLISH ROOF SHINGLES
 - 4 DEMOLISH A/C CONCRETE PAD
 - 5 DEMOLISH ALL SHELVING, MILLWORK, AND FIXTURES. REMOVE WALL BOARD AND REPLACE WITH NEW GYP BD
 - 6 DEMOLISH BUILT-IN RISERS
 - 7 DEMOLISHED ATTIC FULL-DOWN STAIR TO BE REVISED. REFER TO 2/A.2.2 FOR NEW LOCATION

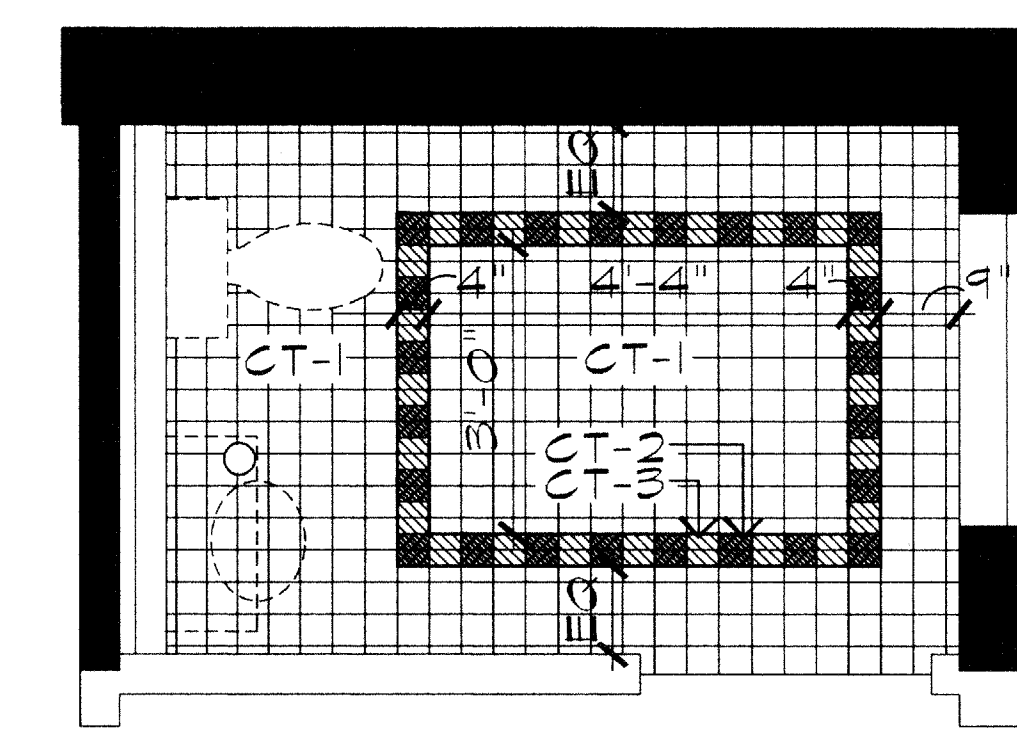
- LEGEND**
- EXISTING PARTITION TO REMAIN
 - EXISTING PARTITION TO BE REMOVED
 - NOV HALL MOUNTED OUTLETS TO BE REMOVED
- NOTE SOME SYMBOLS MAY NOT BE USED

- CONSTRUCTION NOTES**
- 1 ADD NEW FLOOR DRAIN IN ROOM 103
 - 2 CLOSE PASS-THRU WINDOW
 - 3 REMOVE PANELING, INSULATE, AND ADD NEW PLUMBING AND ELECTRICAL. REPLACE REFINISHED PANELING.
 - 4 PATCH AND REPAIR WOOD FLOOR TO MATCH ADJACENT
 - 5 NEW CONCRETE STOOP
 - 6 EXISTING BOOT SCRAPER TO REMAIN
 - 7 PROVIDE 4"x4" PAINTED PLYWOOD SHEET FOR USE AS A PHONEBOARD IN THE ATTIC WHERE POSSIBLE
 - 8 NEW CONCRETE PORCH REFER TO FOUNDATION DETAILS ON A.4.2
 - 9 FLUSH CERAMIC TILE CUT TO WOOD FLOORING AT TRANSITION
 - 10 USE WOOD TRANSITION STRIP
 - 11 WINDOW TO HAVE OBSCURE GLASS. ALL OTHER WINDOWS TO HAVE CLEAR GLASS
 - 12 INSTALL LEVELOR BLINDS ON EACH WINDOW IN ROOM 101
 - 13 DOOR TO CLEAR FIRE SPRINKLER PIPES

- LEGEND**
- NEW PARTITION
 - EXISTING PARTITION TO REMAIN
 - ROOM NUMBERS
 - DOOR NUMBERS
 - WALL TYPES
 - SECTION MARK
 - DETAIL NUMBER
 - SHEET NUMBER
 - FEQ HALL MOUNTED FIRE EXTINGUISHER
- NOTE SOME SYMBOLS MAY NOT BE USED



3 ENLARGED PLAN - ADA RESTROOM
SCALE 1/2"=1'-0"
N:\DATA\MSDATA\ADDISON\CG\GOTTSP3.DGN

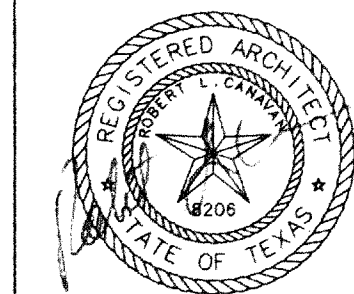


4 TILE PATTERN-ADA RESTROOM
SCALE 1/2"=1'-0"
N:\DATA\MSDATA\ADDISON\CG\GOTTSP3.DGN

TITLE

CONSTRUCTION PLAN
DEMOLITION PLAN

SCALE AS NOTED DRAWN BY: KJN
CONSULTANTS



NOTE TO CONTRACTOR

Contractor is to field verify all dimensions. Written dimensions are to have precedence over scaled dimensions. The contractor shall verify and be responsible for all dimensions and conditions on the job and H&A must be notified of any variations from the dimensions and the conditions shown on these drawings. Shop drawings must be submitted to H&A for approval before proceeding with fabrication. The contractor remains responsible for details and accuracy, for confirming and correlating all quantities and dimensions, for selecting fabrication processes, for techniques of assembly, for performing his work in a safe manner, and for adhering to all applicable codes.

PRELIMINARY

1/21/98 REVIEW SET ISSUED

ISSUE DATE

JANUARY 26, 1998

REVISIONS

PROJECT NUMBER

97.023.002

SHEET NUMBER

A.2.1