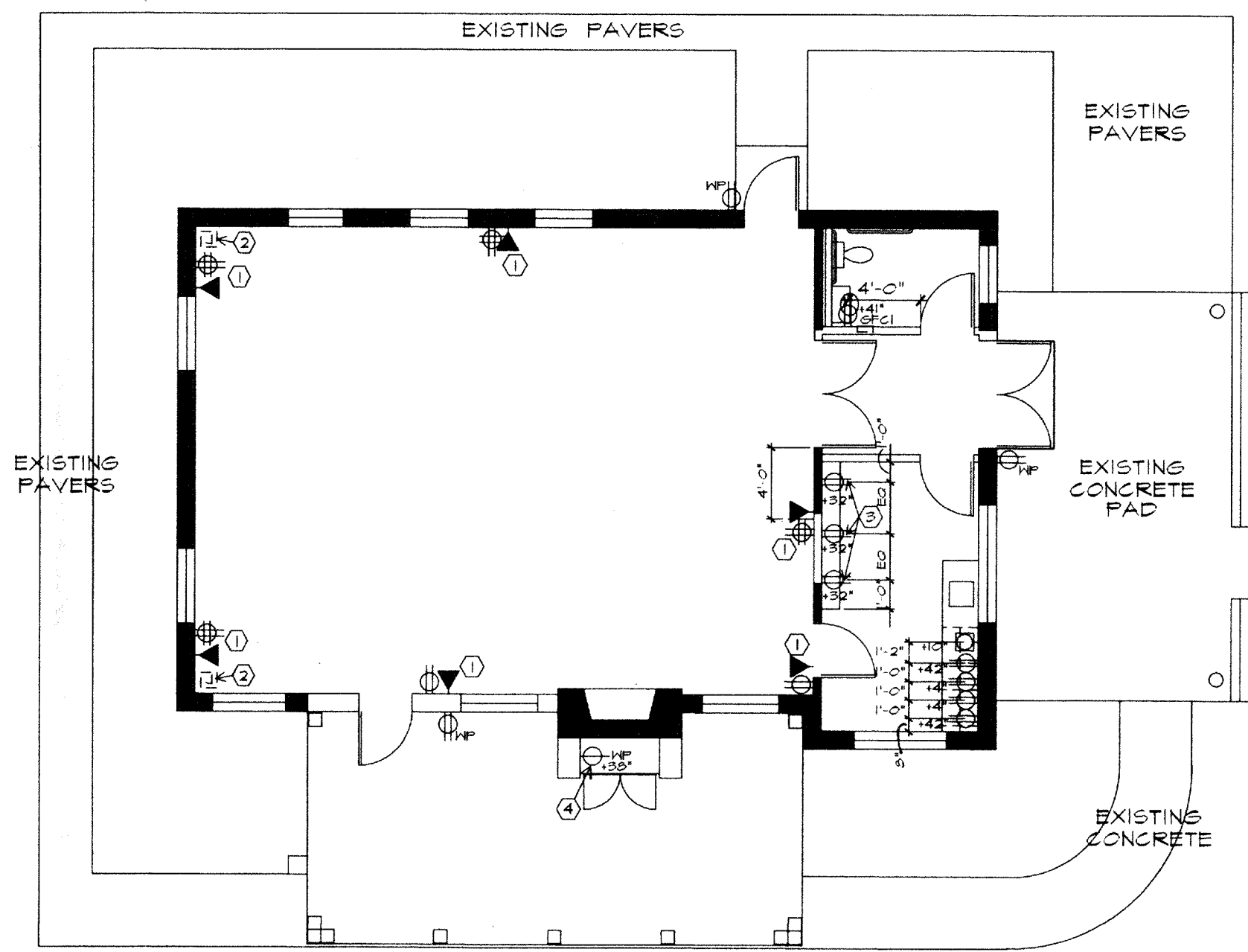


STONE  
COTTAGE

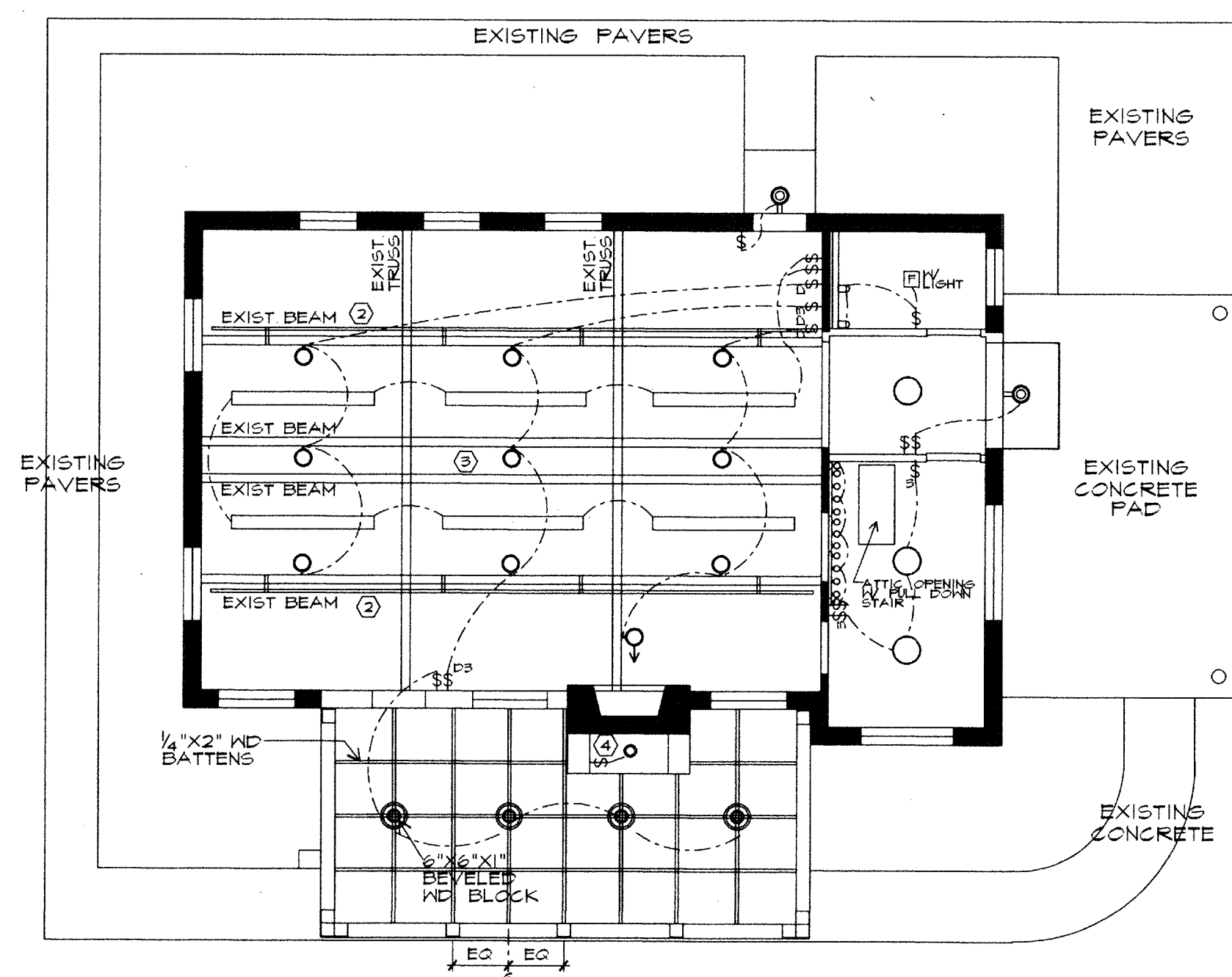
ADDISON  
TEXAS

TOWN OF  
ADDISON

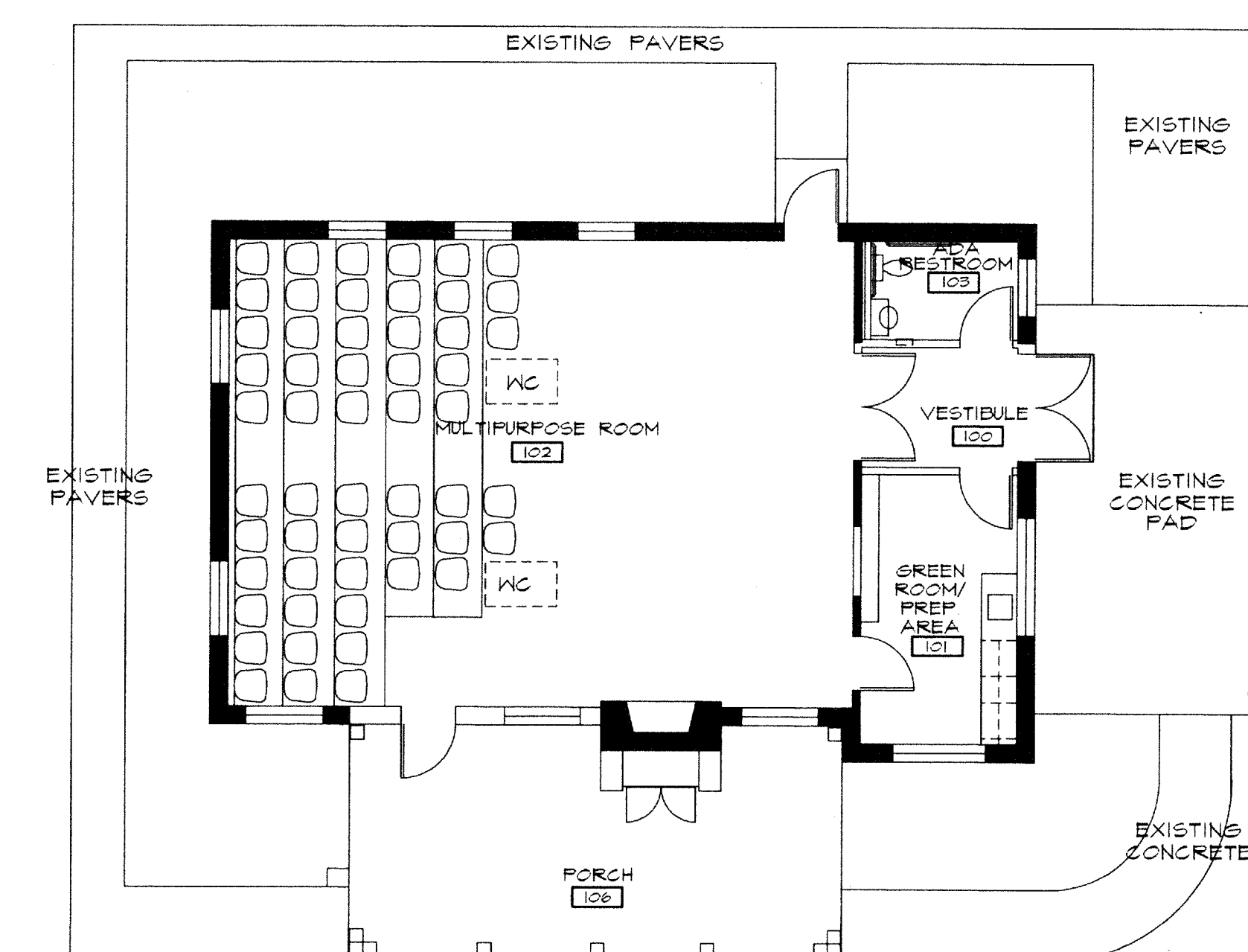
HARRIS DESIGN ASSOCIATES, INC. 3535 TRAVIS STREET LB 145 SUITE 265 DALLAS, TX 75204 214 526-8621 DESIGNERS/ARCHITECTS/PLANNERS



1 ELECTRICAL PLAN



2 REFLECTED CEILING PLAN



3 FURNITURE PLAN-FOR REFERENCE ONLY



**ELECTRICAL NOTES**

- ADJACENT OUTLETS TO BE PLACED IN SAME FACE PLATE IF POSSIBLE
- INSTALL EMPTY 1" CONDUIT FROM CENTER OF ATTIC TO J-BOX IN CEILING
- OUTLETS TO BE PLACED HORIZONTALLY ON FACE OF LAMINATE BACK SPLASH
- SIMPLEX OUTLET AND LIGHT SWITCH TO BE IN ONE COVERPLATE WITH WATERPROOF COVER
- DEMOLISH EXISTING ELECTRICAL REFER TO E1

**LEGEND**

- MALL MOUNTED ELECTRICAL DUPLEX OUTLET
- MALL MOUNTED ELECTRICAL QUADRAPLEX OUTLET
- MALL MOUNTED TELEPHONE/DATA OUTLET
- ELECTRICAL OUTLET TO HOT WATER HEATER
- SUBSCRIPT INDICATES GROUND FAULT CIRCUIT INTERRUPTER OUTLET
- SUBSCRIPT INDICATES MOUNTING HEIGHT TO CENTER OF OUTLET
- SUBSCRIPT INDICATES WATER PROOF OUTLET
- BLANK COVER PLATE OVER J-BOX IN CEILING W/ FULL STRIKES AND CONDUIT
- MALL MOUNTED ELECTRICAL SIMPLEX OUTLET

NOTE ALL OUTLETS TO BE MOUNTED AT 15" AFF UNO SOME SYMBOLS MAY NOT BE USED

**RCP NOTES**

- DEMOLISH ALL EXISTING INTERIOR AND EXTERIOR LIGHT FIXTURES
- EXISTING METAL PIPES TO REMAIN
- ADD NEW BATT INSULATION IN CEILING BETWEEN RAFTERS PRIOR TO INSTALLING GYP BC
- SEE NOTE 4 ON ELECTRICAL NOTES
- REFER TO SHEET M1 FOR HVAC LAYOUT

**LEGEND**

- INCANDESCENT DOWN LIGHT MOUNTED TO SIDE OF BEAM OR TRUSS W/ ADJUSTABLE MALL BRACKET
- BERKELEY FLUSH CEILING MOUNT - M-466-60N CREAM ART GLASS FROM REJUVENATION LAMP 4 FIXTURE CO
- AMITY LANTERN MALL BRACKET - M-1616-60N CREAM ART GLASS FROM REJUVENATION LAMP 4 FIXTURE CO
- INCANDESCENT ADJUSTABLE DOWN LIGHT MOUNTED TO SIDE OF BEAM OR TRUSS
- RECESSED DOWN LIGHT WITH LENS COVER
- 18" DIA FLUORESCENT CEILING MOUNTED FIXTURE LIGHTOLIER LUMINOSS 240W 2 LT 3240
- FEETLESS T X 3 ROUNDED FLUORESCENT OPEN OFFICE PRODUCT - L01-020451
- LIGHTOLIER CELEBRITY 0.4132-140402
- LIGHTOLIER CELEBRITY 0.1124-140401
- FLUORESCENT MALL MOUNTED FIXTURE LIGHTOLIER HELIOS 5410PC 15W TWIN TUBE
- 3P DIMMER SWITCH
- THREE WAY DIMMER SWITCH
- LIGHTS SWITCHED WITH 1 OR 2 LAMP CAPABILITIES
- EXHAUST FAN WITH LIGHT

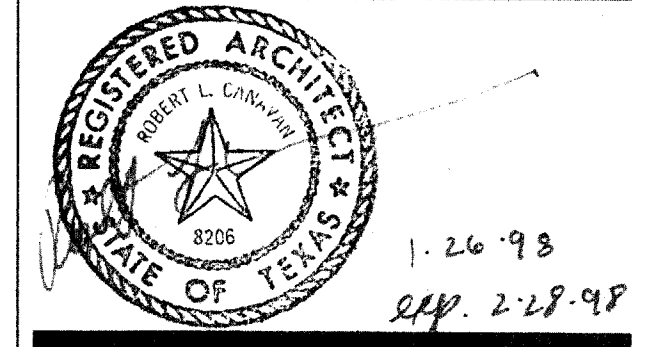
NOTE SOME SYMBOLS MAY NOT BE USED

**FURNITURE NOTES**

**LEGEND**

TITLE  
ELECTRICAL PLAN/  
REFLECTED CEILING PLAN/  
FURNITURE PLAN

SCALE: 1/8"=1'-0"  
DRAWN BY: KN  
CONSULTANTS



NOTE TO CONTRACTOR  
Contractor is to field verify all dimensions. Written dimensions are to have precedence over scaled dimensions. The contractor shall verify and be responsible for all dimensions and conditions on the job and H&A must be notified of any variations from the dimensions and the conditions shown on these drawings. Shop drawings must be submitted to H&A for approval before proceeding with fabrication. The contractor remains responsible for details and accuracy, for confirming and correlating all quantities and dimensions, for selecting fabrication processes, for techniques of assembly, for performing his work in a safe manner, and for adhering to all applicable codes.

PRELIMINARY  
1/21/98 REVIEW SET ISSUED

ISSUE DATE  
JANUARY 26, 1998

REVISIONS

PROJECT NUMBER  
97.023.002

SHEET NUMBER  
A.2.2