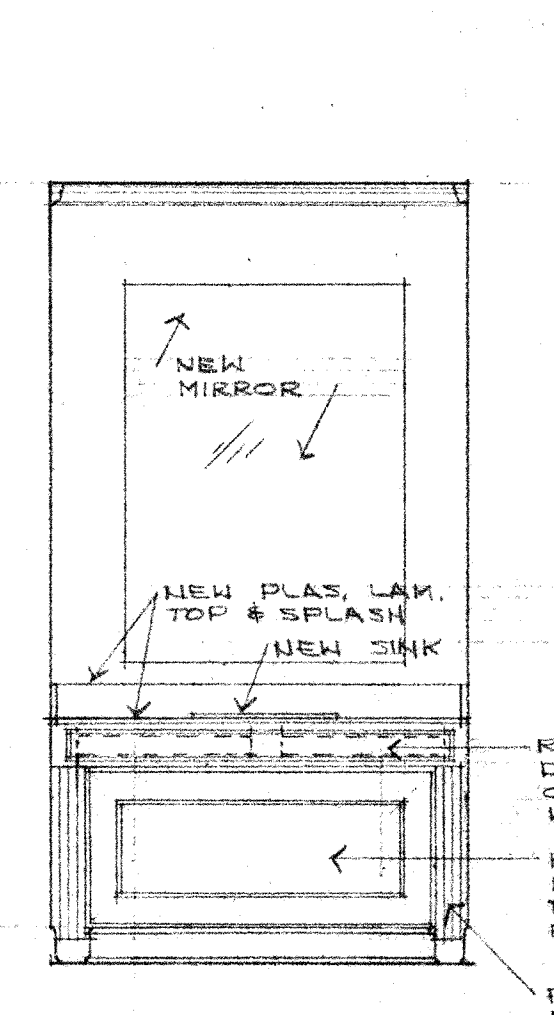
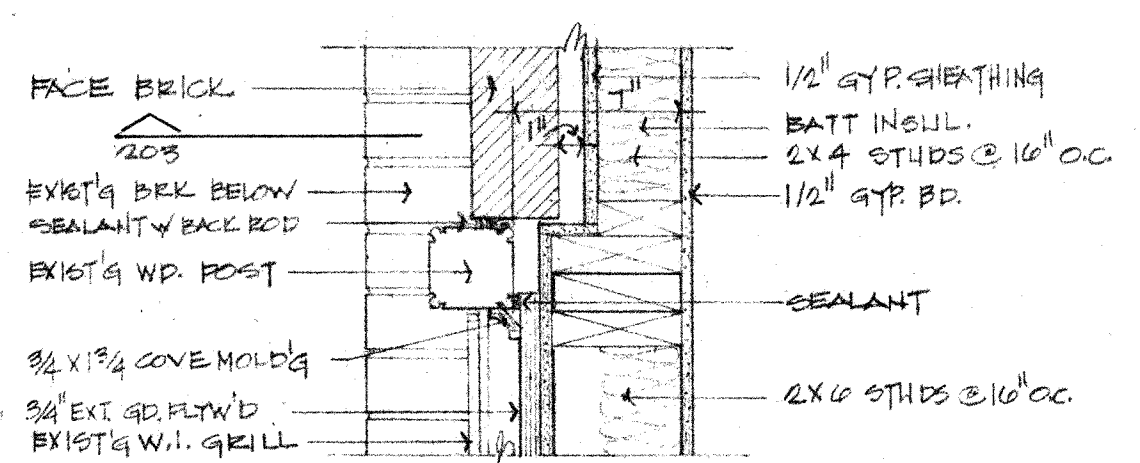


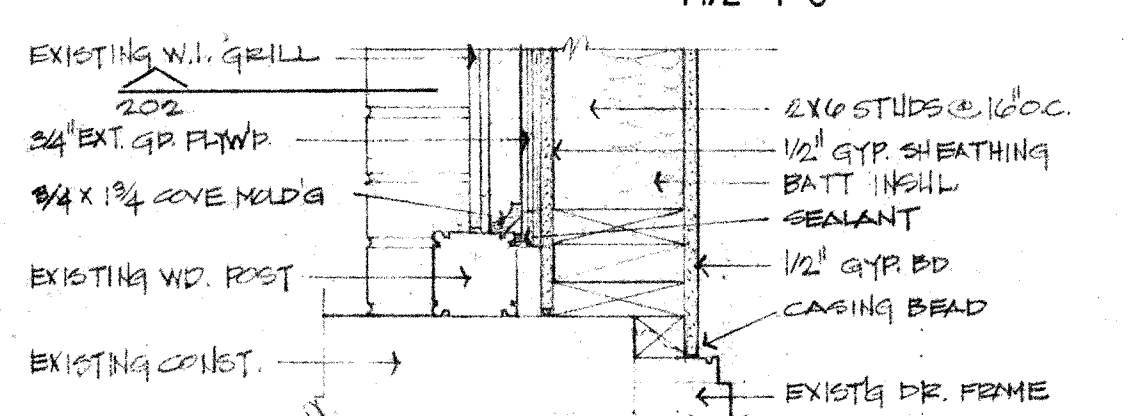
207 Basement Plan
1/4"=1'-0"



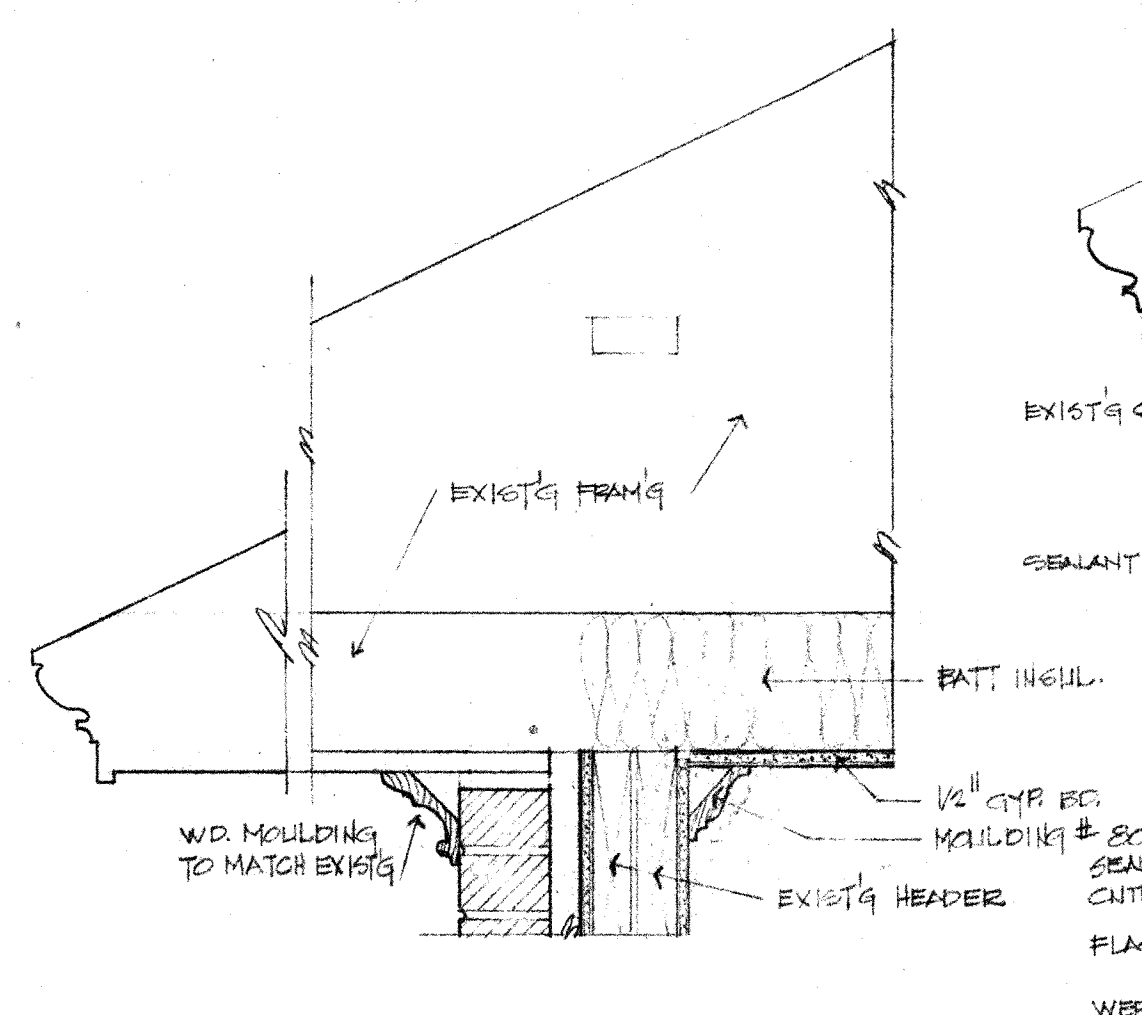
208 Elev.
1/2"=1'-0"



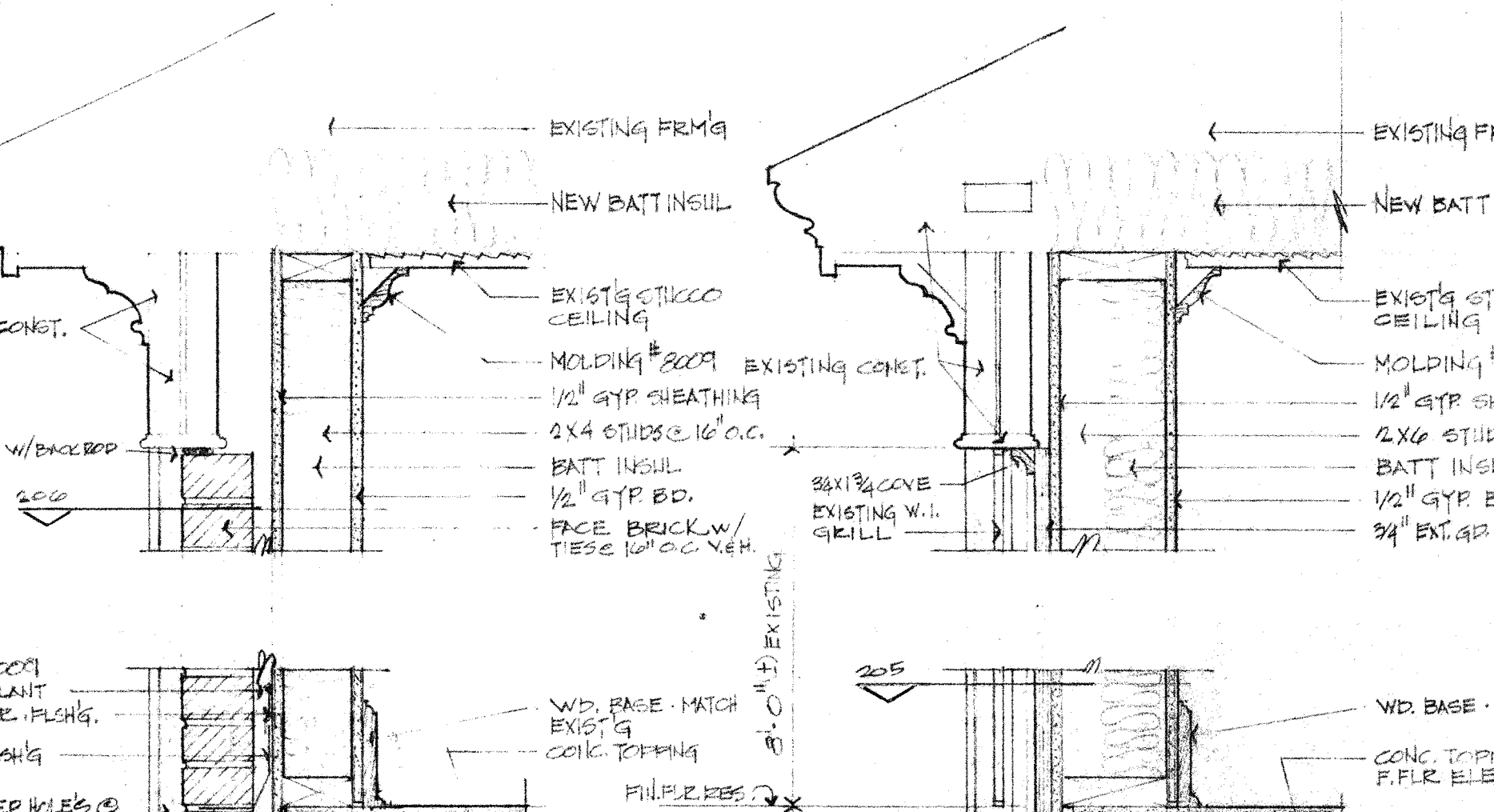
206 Detail
1 1/2"=1'-0"



205 Detail
1 1/2"=1'-0"

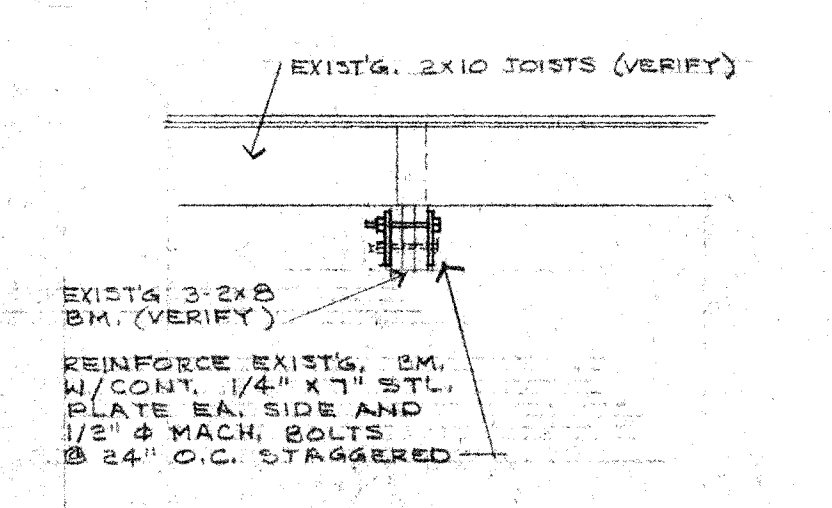


204 Section
1 1/2"=1'-0"

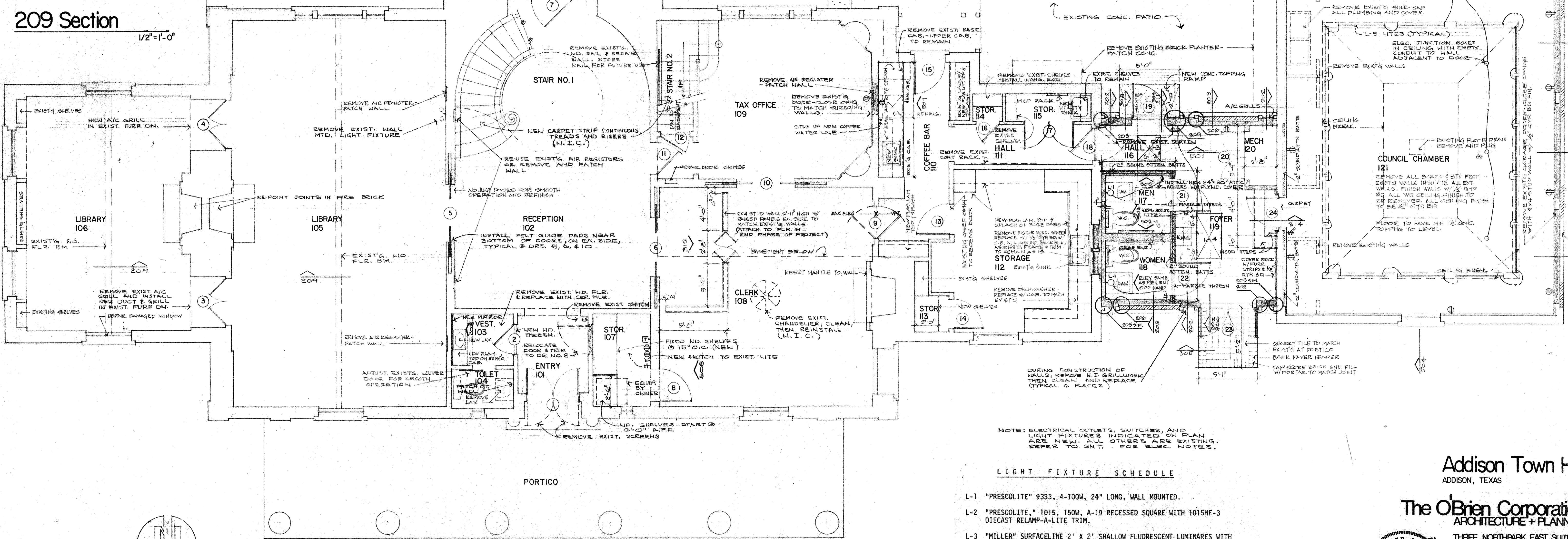


203 Section
1 1/2"=1'-0"

202 Section
1 1/2"=1'-0"



209 Section
1/2"=1'-0"



201 First Floor Plan
3/8"=1'-0"

NOTE: ELECTRICAL OUTLETS, SWITCHES, AND LIGHT FIXTURES INDICATED ON PLAN ARE NEW. ALL OTHERS ARE EXISTING. REFER TO SHT. FOR ELEC. NOTES.

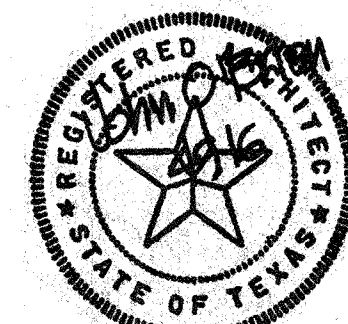
LIGHT FIXTURE SCHEDULE

- L-1 "PRESCOLITE" 9333, 4-100W, 24" LONG, WALL MOUNTED.
- L-2 "PRESCOLITE," 1015, 150W, A-19 RECESSED SQUARE WITH 1015HF-3 DIECAST RELAMP-A-LITE TRIM.
- L-3 "MILLER" SURFACELINE 2' x 2' SHALLOW FLUORESCENT LUMINAIRES WITH HINGED DOOR & M-2 ACRYLIC LENS.
- L-4 SAME AS L-3 EXCEPT 2' x 4' SIZE.
- L-5 4 FT. FLUORESCENT LIGHTS CONCEALED IN LIGHT COVE.

Addison Town Hall
ADDISON, TEXAS

The O'Brien Corporation
ARCHITECTURE + PLANNING

THREE NORTH PARK EAST SUITE 910
DALLAS, TEXAS 75231
214 696 1937



MAY, 1979

7833

Sheet

2
9