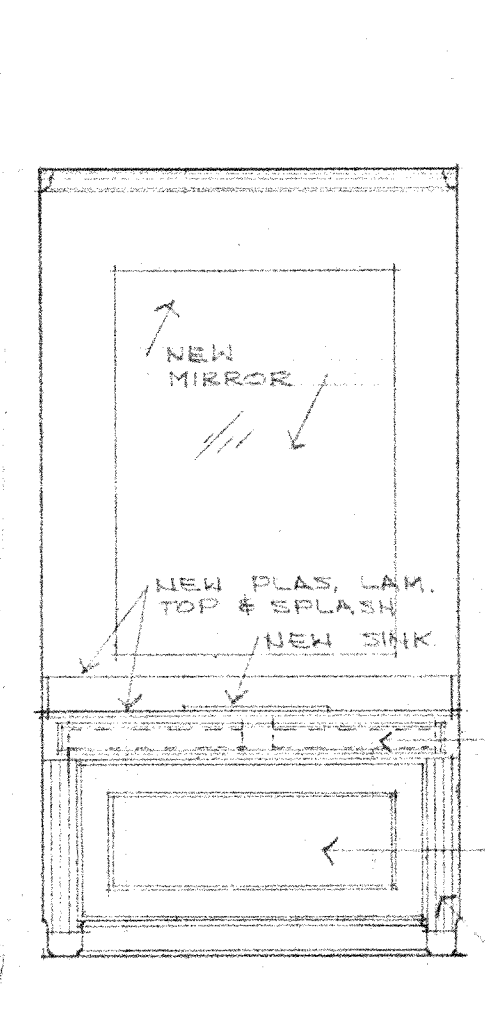
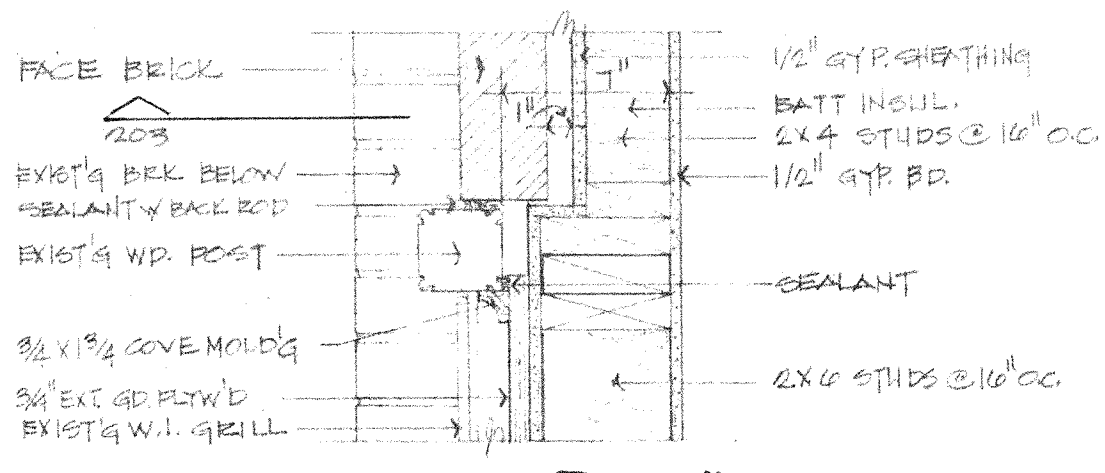


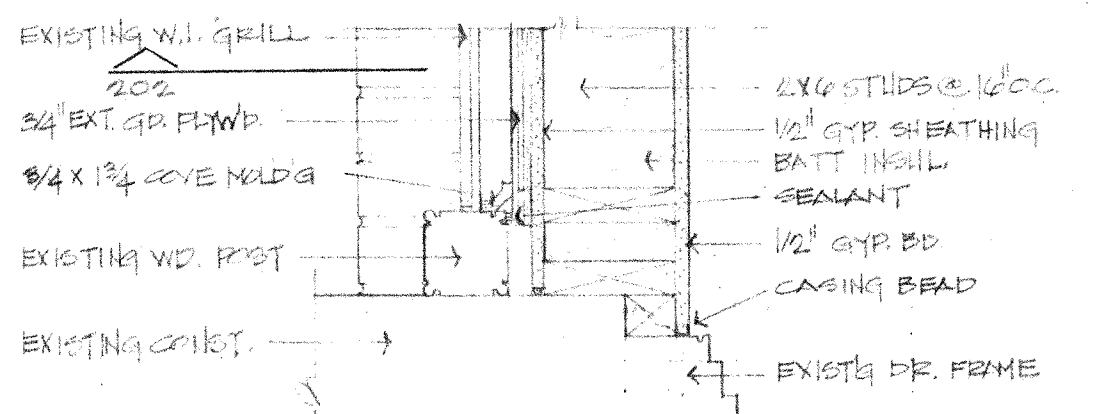
207 Basement Plan
1/4"=1'-0"



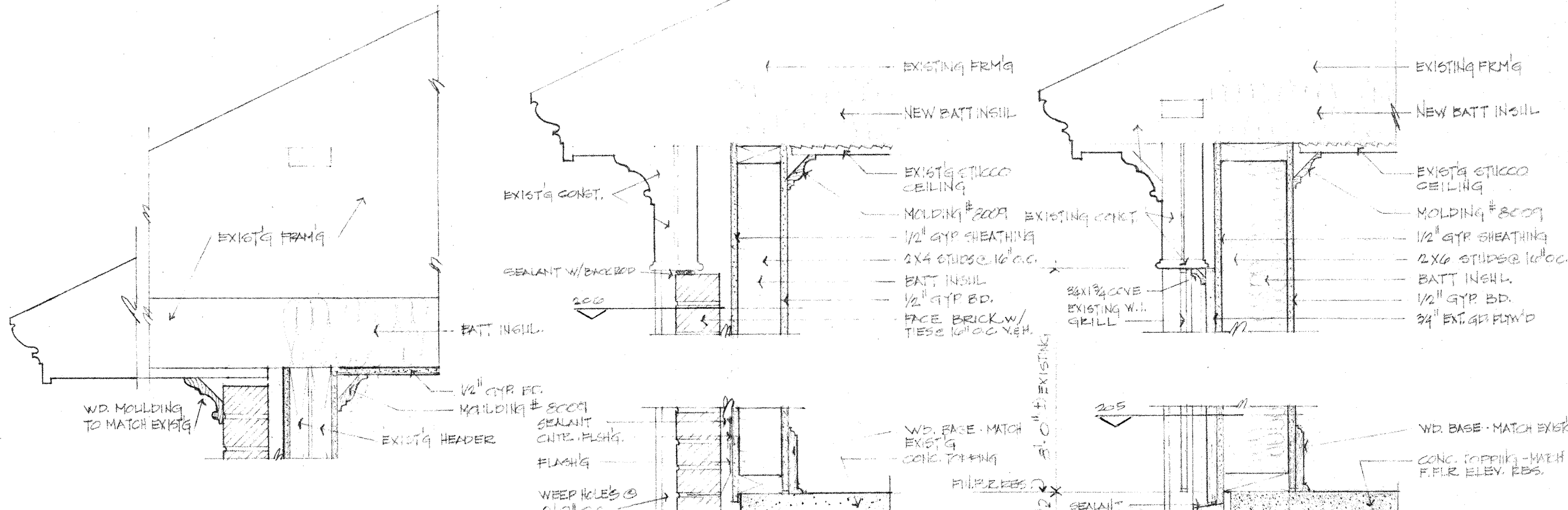
208 Elev.
1/2"=1'-0"



206 Detail
1 1/2"=1'-0"

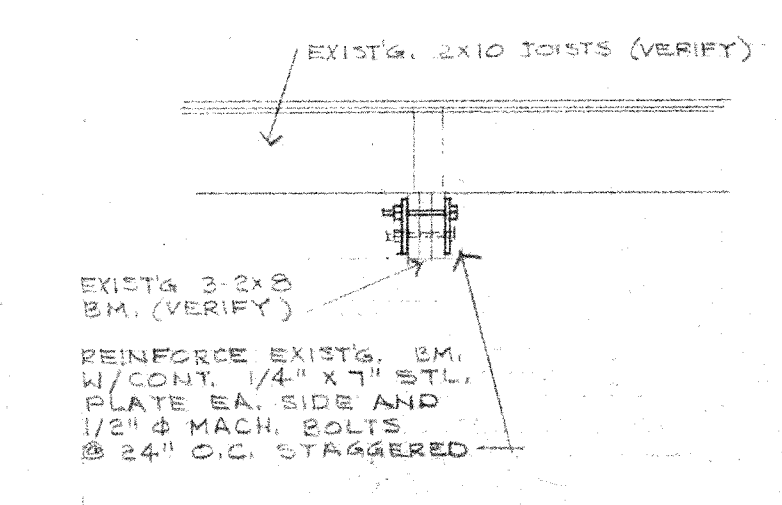


205 Detail
1 1/2"=1'-0"

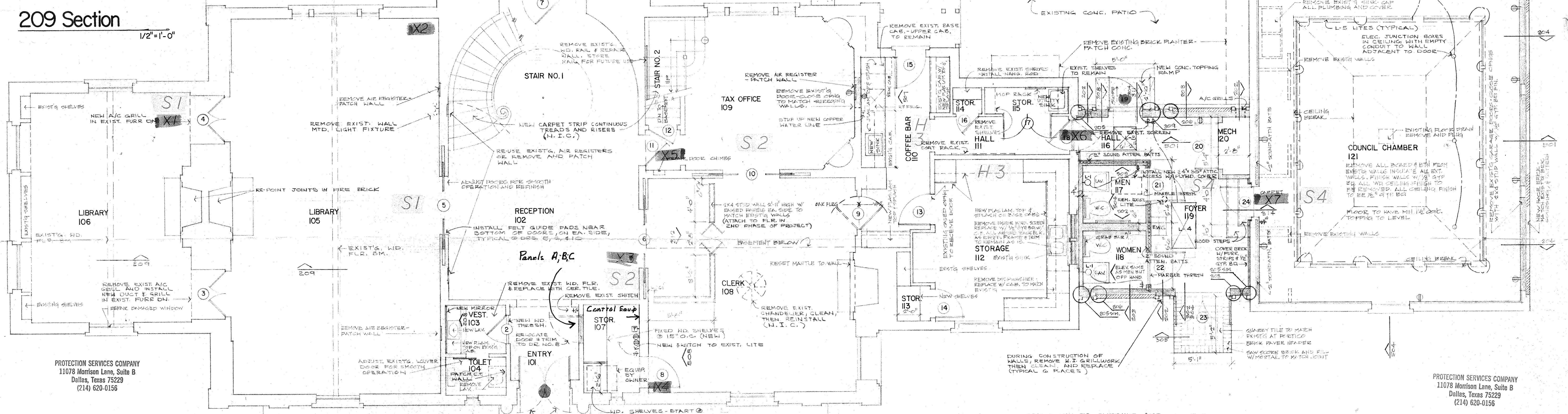


203 Section
1 1/2"=1'-0"

202 Section
1 1/2"=1'-0"



209 Section
1/2"=1'-0"



PROTECTION SERVICES COMPANY
11078 Morrison Lane, Suite B
Dallas, Texas 75229
(214) 620-0156

PROTECTION SERVICES COMPANY
11078 Morrison Lane, Suite B
Dallas, Texas 75229
(214) 620-0156

NO. = ZONE
S — SMOKE DETECTOR
H — HEAT DETECTOR
ATTIC No. 7

NOTE: ELECTRICAL OUTLETS, SWITCHES, AND LIGHT FIXTURES INDICATED ON PLAN ARE NEW. ALL OTHERS ARE EXISTING. REFER TO SHT. FOR ELEC. NOTES.

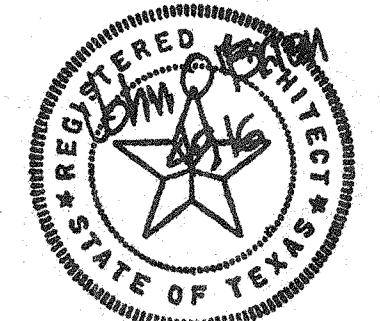
LIGHT FIXTURE SCHEDULE

- L-1 "PRESCOLITE" 9333, 4-100W, 24" LONG, WALL MOUNTED.
- L-2 "PRESCOLITE," 1015, 150W, A-19 RECESSED SQUARE WITH 1015HF-3 DIECAST RELAMP-A-LITE TRIM.
- L-3 "MILLER" SURFACELINE 2' X 2' SHALLOW FLUORESCENT LUMINAIRES WITH HINGED DOOR & M-2 ACRYLIC LENS.
- L-4 SAME AS L-3 EXCEPT 2' X 4' SIZE.
- L-5 4 FT. FLUORESCENT LIGHTS CONCEALED IN LIGHT COVE.

Addison Town Hall
ADDISON, TEXAS

The O'Brien Corporation
ARCHITECTURE + PLANNING

THREE NORTH PARK EAST SUITE 910
DALLAS, TEXAS 75231
214 686 1997



1 MAY, 1979

Sheet

2

of 9

201 First Floor Plan
3825 SQ. FT. 1/4"=1'-0"