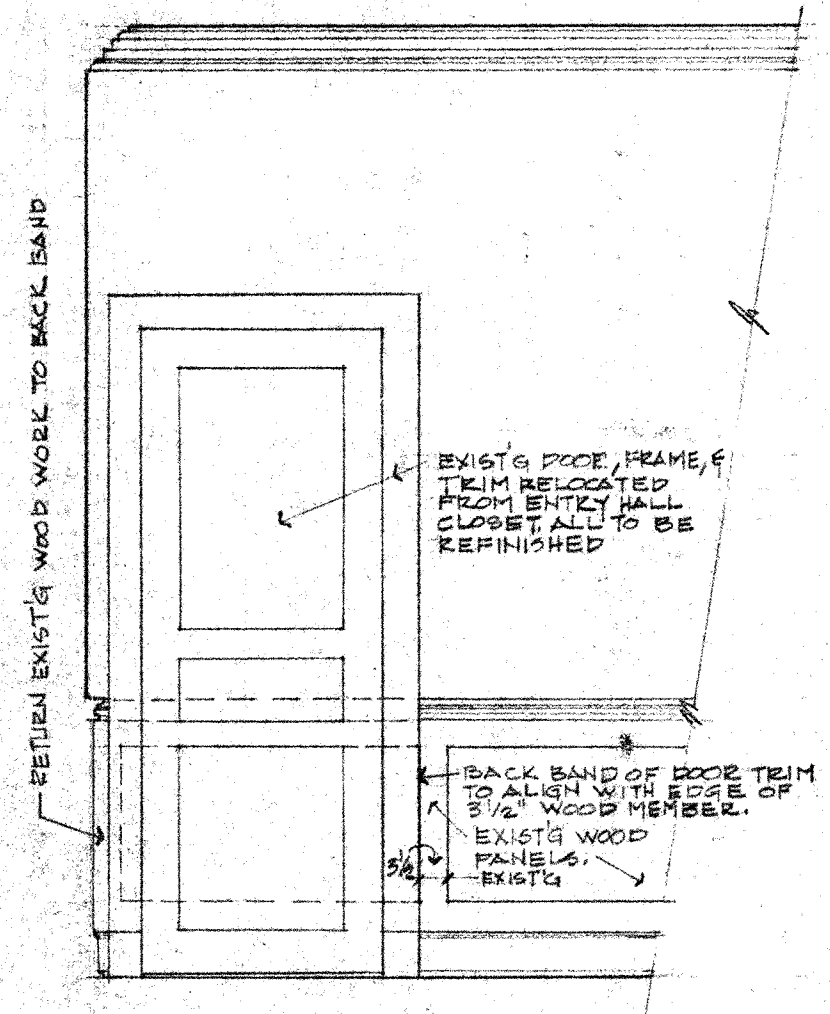




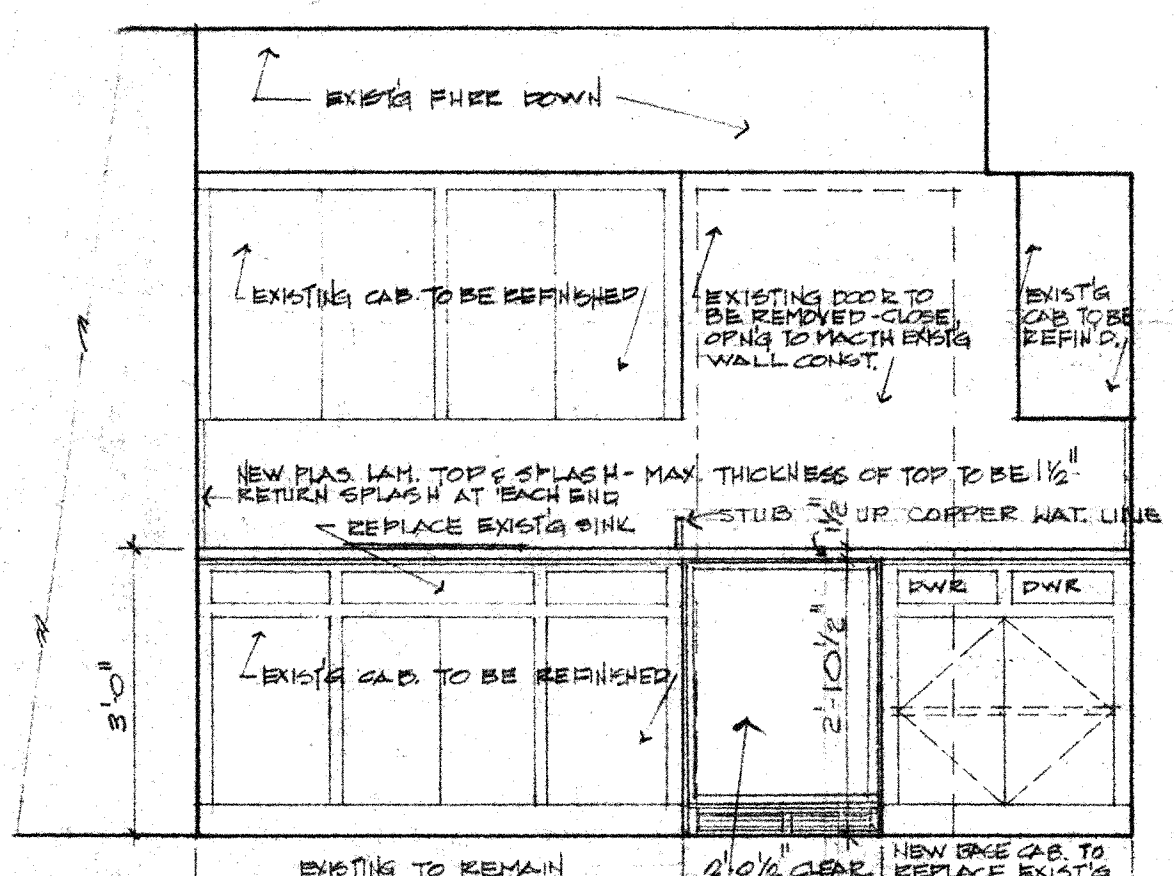
509 South Elevation

1/4" = 1'-0"



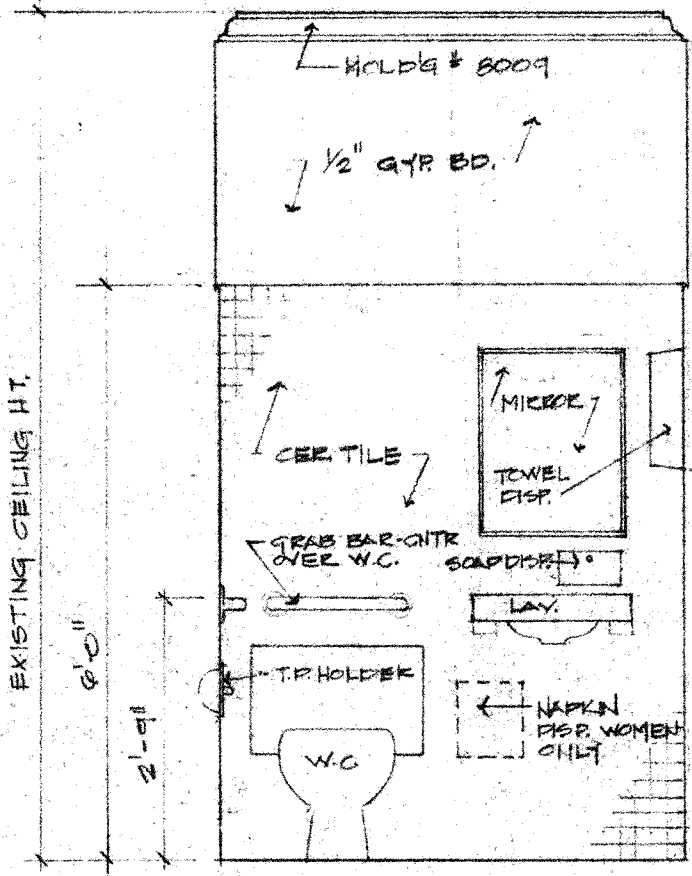
508 Elevation

1/2" = 1'-0"



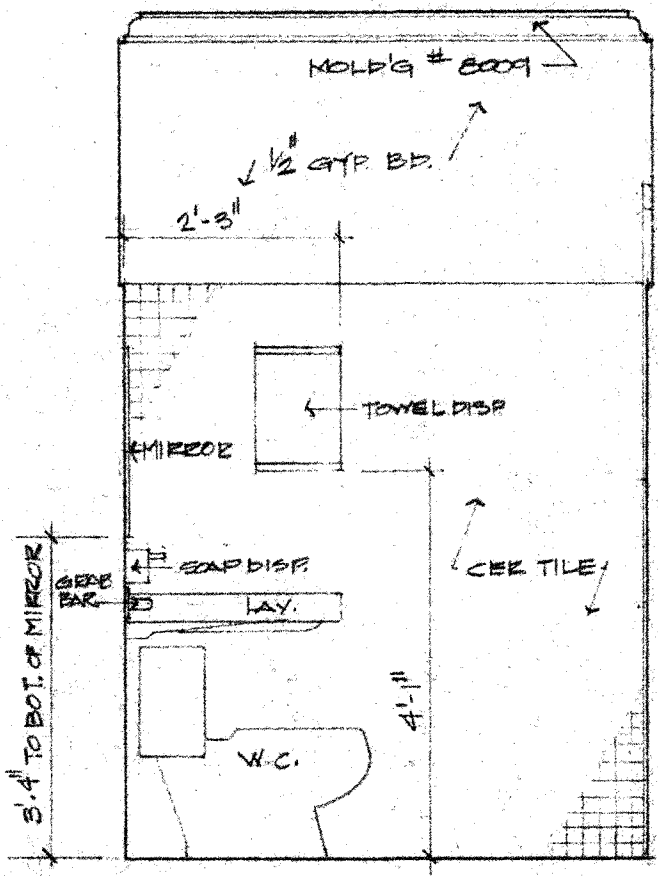
507 Elevation

1/2" = 1'-0"



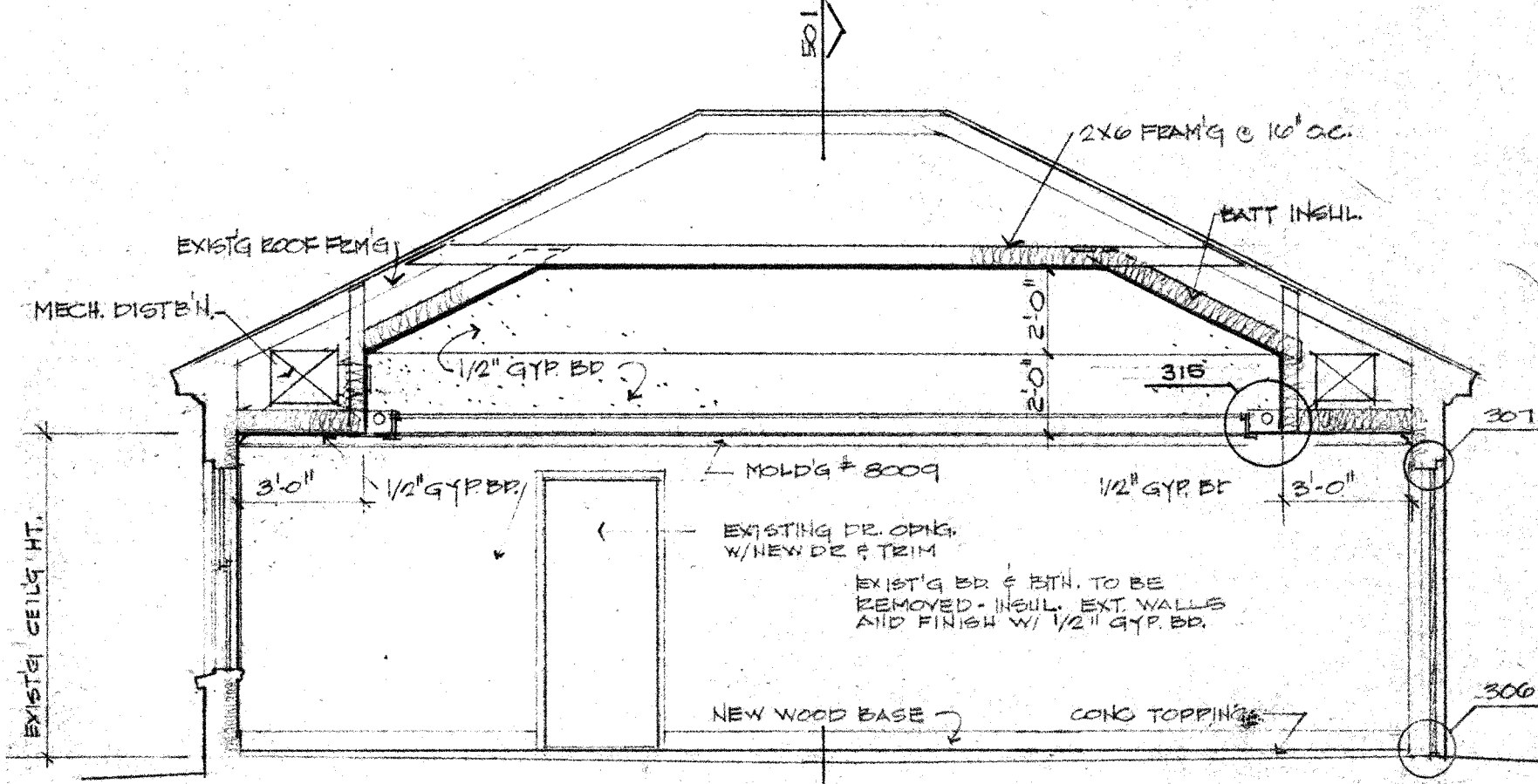
506 Elevation

1/2" = 1'-0"



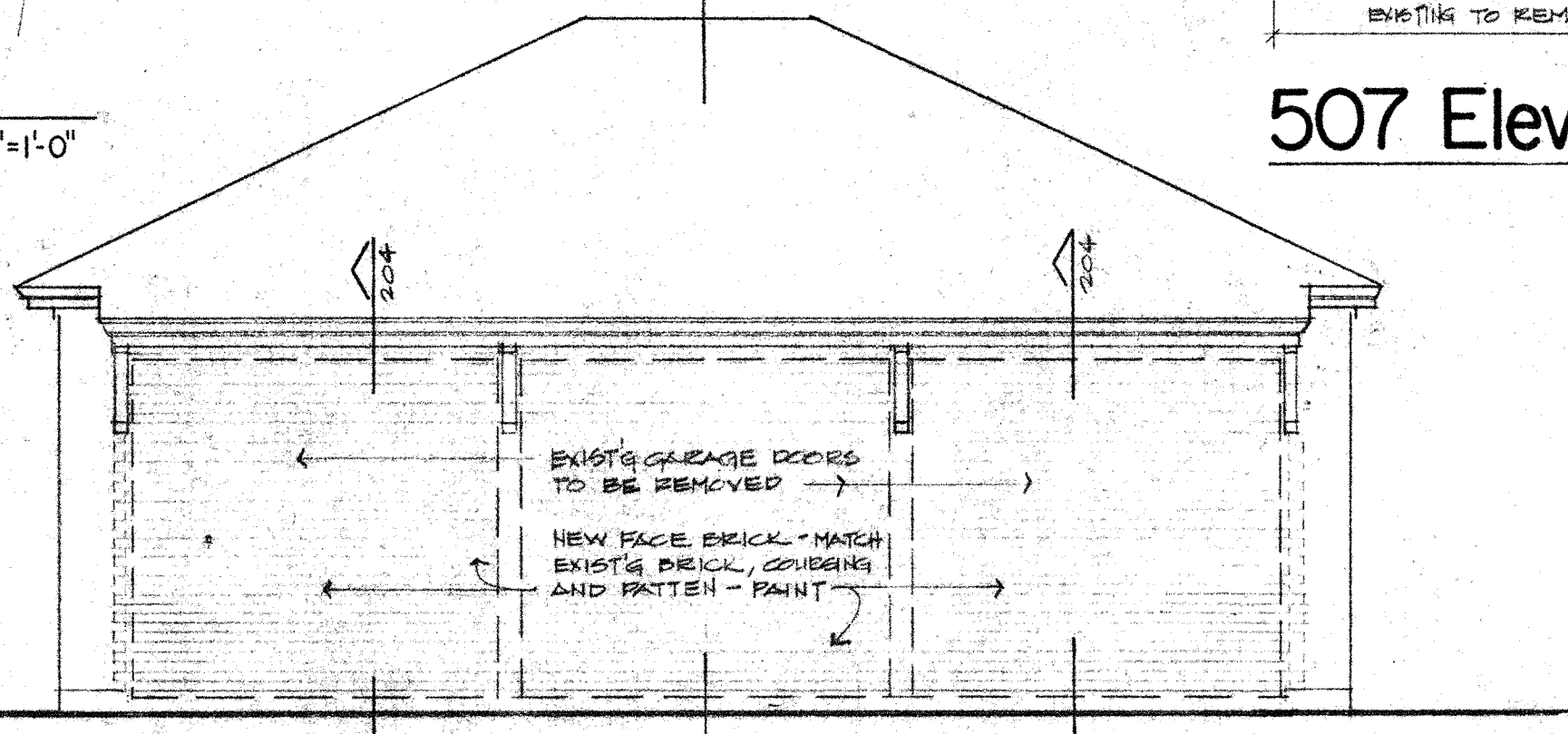
505 Elevation

1/2" = 1'-0"



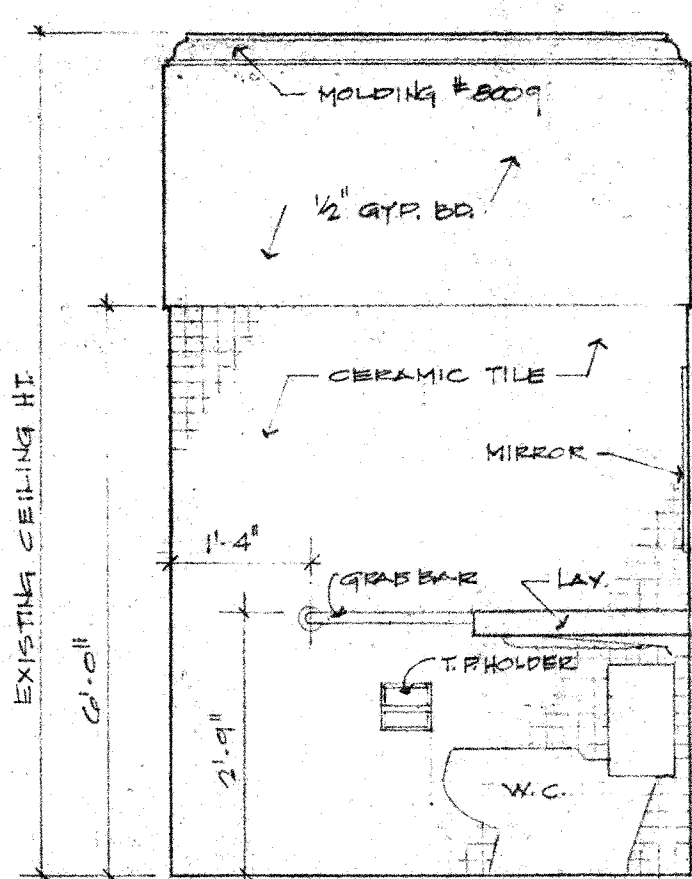
504 Section

1/4" = 1'-0"



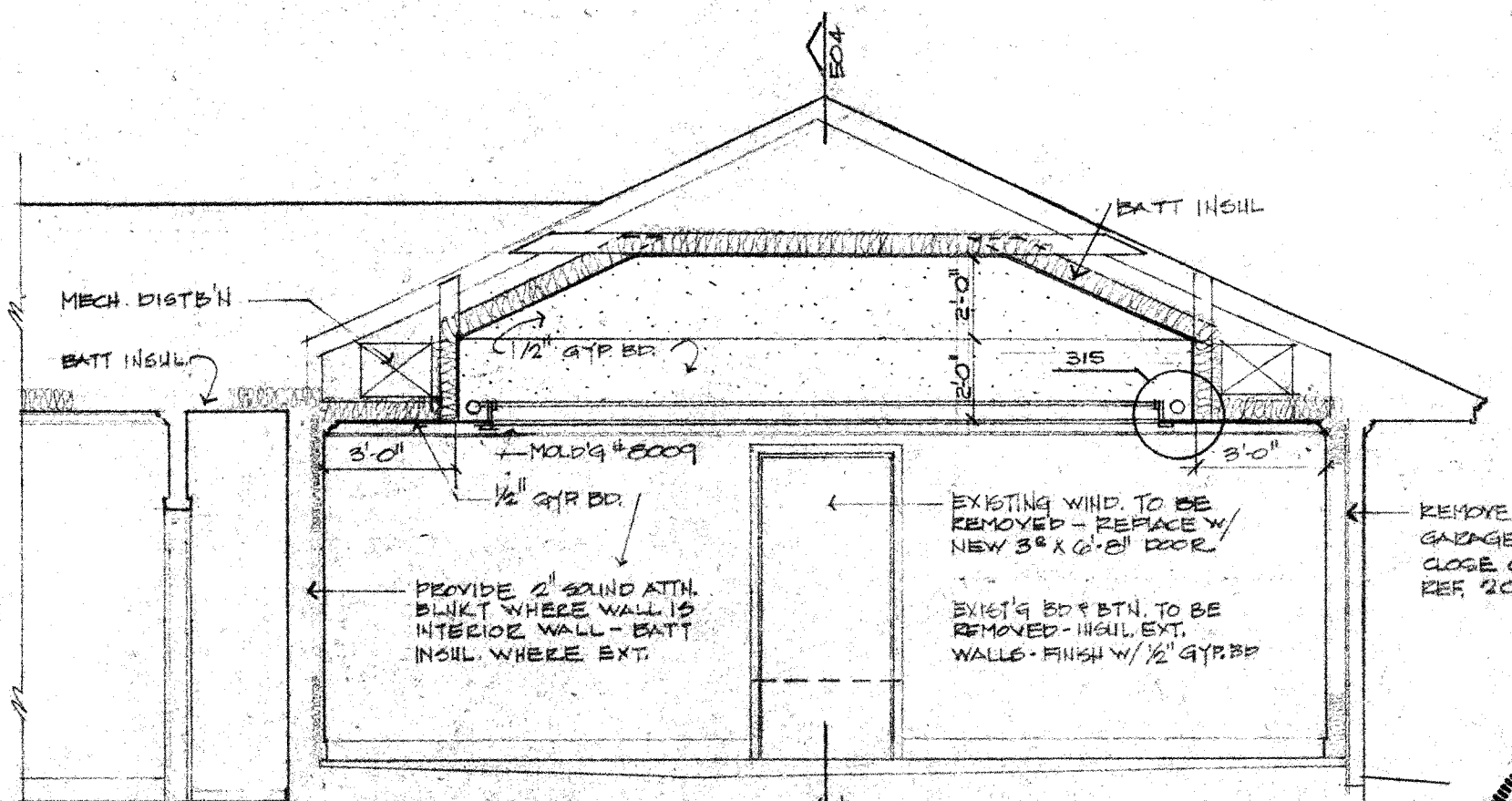
503 West Elevation Garage

1/4" = 1'-0"



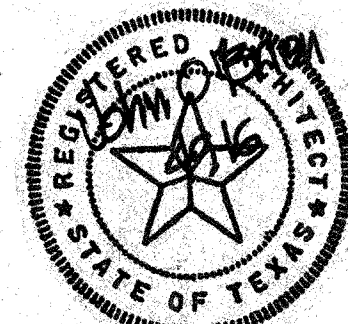
502 Elevation

1/2" = 1'-0"



501 Section

1/4" = 1'-0"



Addison Town Hall
 ADDISON, TEXAS
 The O'Brien Corporation
 ARCHITECTURE + PLANNING
 THREE NORTH-PARK EAST SUITE 910
 DALLAS, TEXAS 75231
 214 696 1997