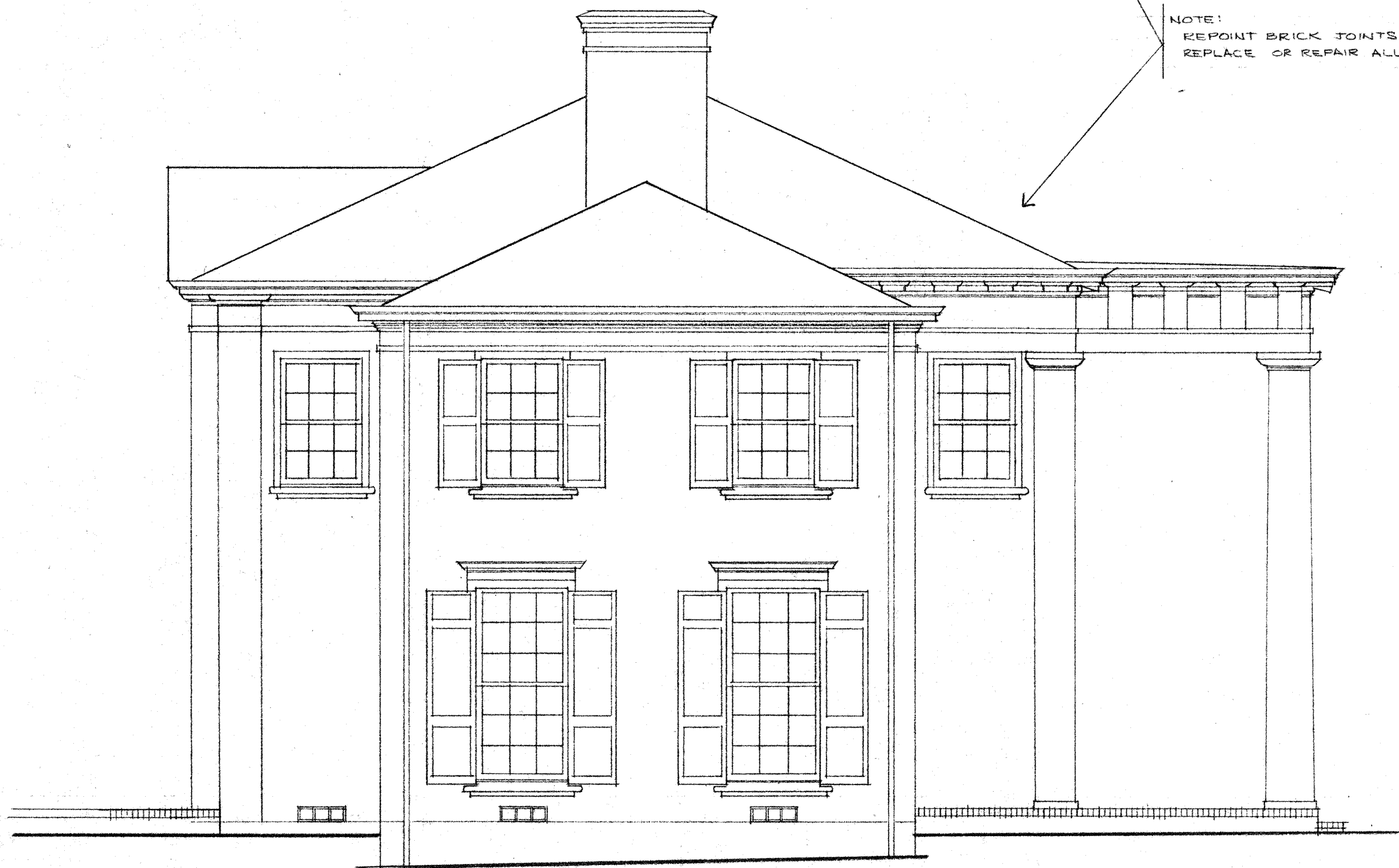




403 North Elevation

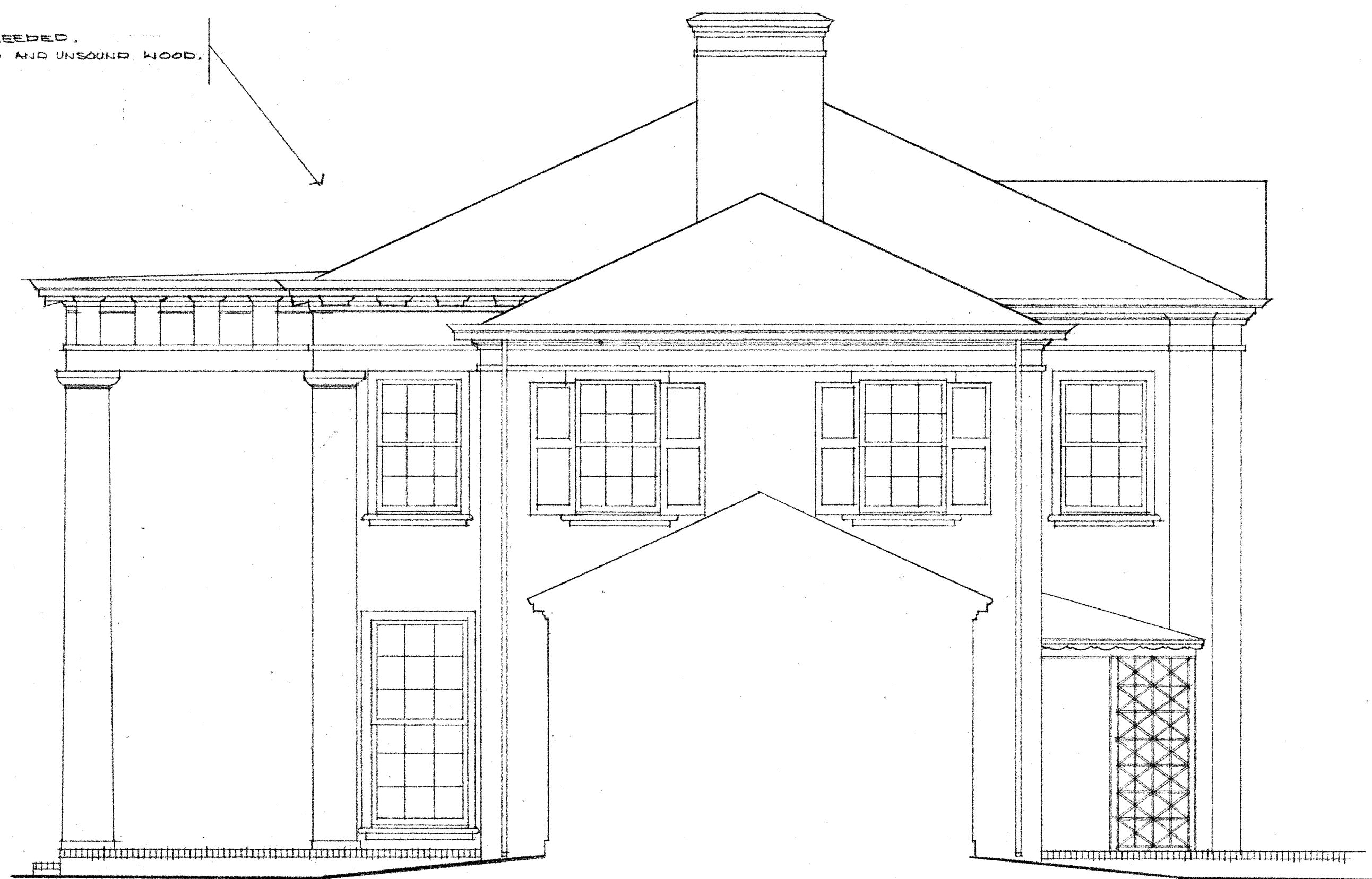
1/4" = 1'-0"

NOTE:
REPOINT BRICK JOINTS WHERE NEEDED.
REPLACE OR REPAIR ALL DAMAGED AND UNSOUND WOOD.



402 East Elevation

1/4" = 1'-0"



401 West Elevation

1/4" = 1'-0"

Addison Town Hall
ADDISON, TEXAS

The O'Brien Corporation
ARCHITECTURE + PLANNING

THREE NORTH-PARK EAST SUITE 910
DALLAS, TEXAS 75231
214 696 1997

1 MAY, 1979

7833



Sheet

4

of 9