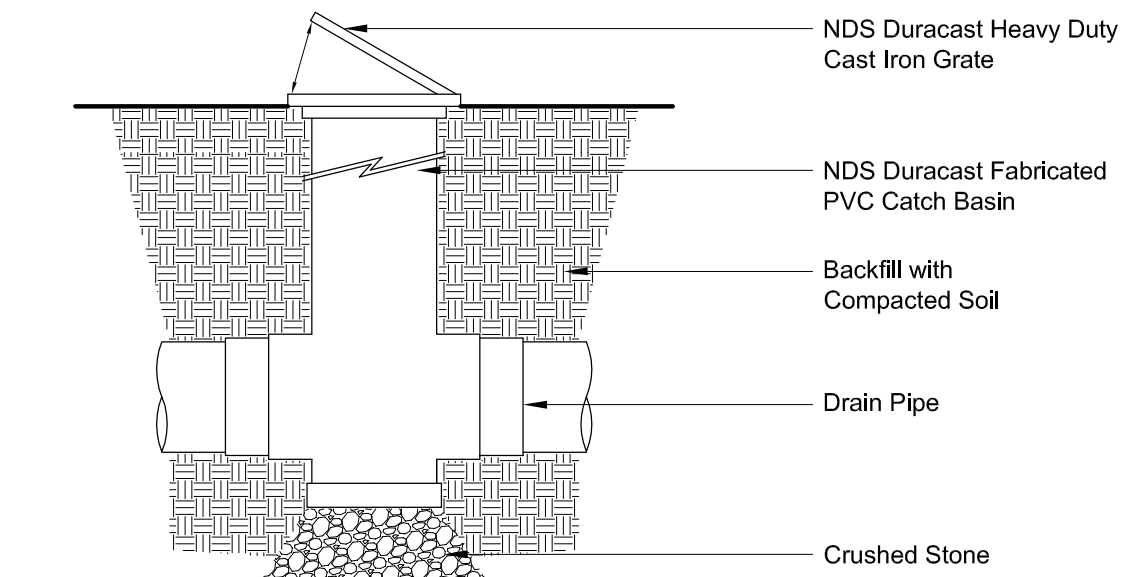
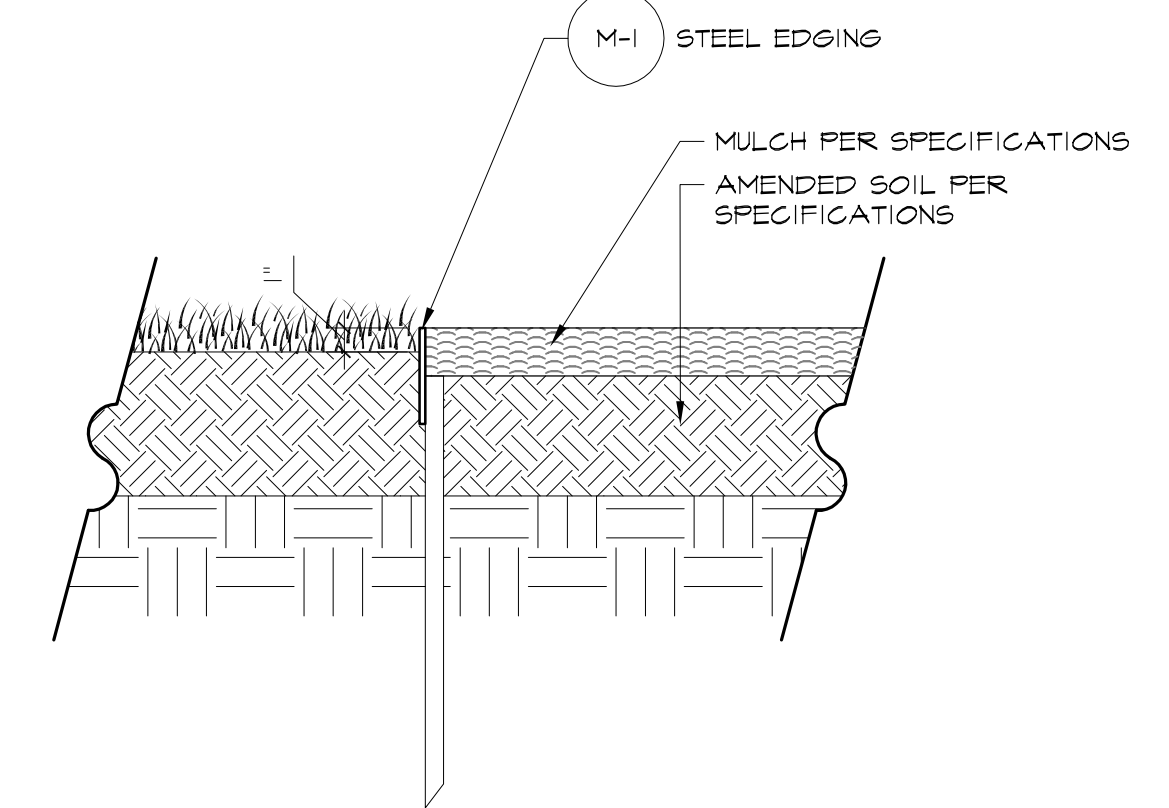


PLANT SCHEDULE

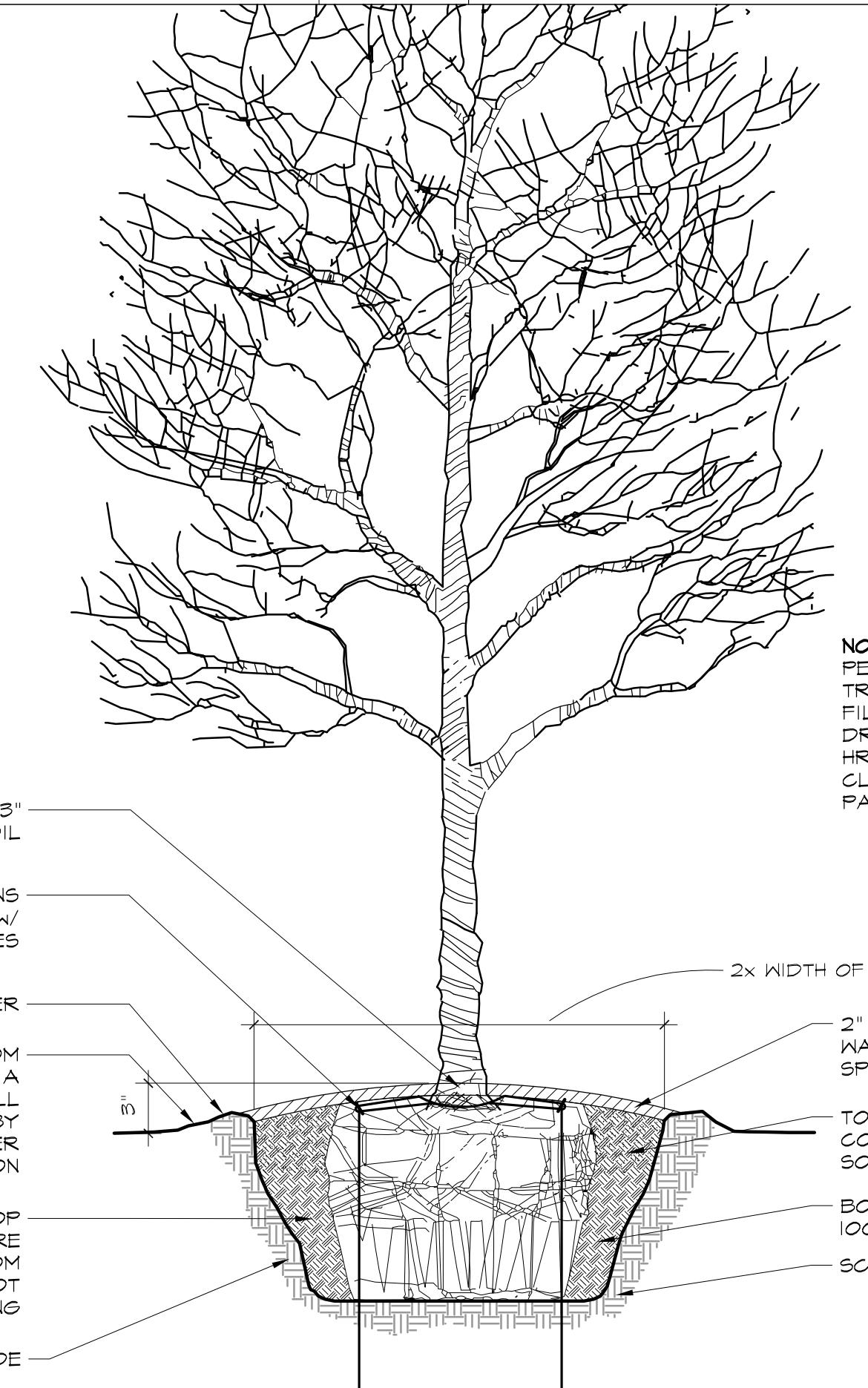
PLANT ID	COMMON NAME BOTANICAL NAME	SIZE MIN.	HEIGHT MIN.	SPREAD MIN.	COMMENTS
TREES					
⊗	SPECIMEN LIVE OAK (MULTI) <i>Quercus virginiana</i>	10" CAL.			FIELD GROWN, MULTI-TRUNK, MATCHED, FULL, WELL BRANCHED.
GROUNDCOVERS, GRASSES & PERENNIALS					
▨	PURPLE WINTERGREENER <i>Euonymus fortunei</i>	1 GAL.	6"	10"	NURSERY GROWN, FULL AND WELL ROOTED PLANT. SPACING 12" O.C.
▽	FIG IVY <i>Ficus pumila</i>	5 GAL.	N/A	N/A	NURSERY GROWN, FULL AND WELL ROOTED PLANT. REFER TO PLANTING PLAN FOR SPACING.



NDS Duracast Grate & Drain E



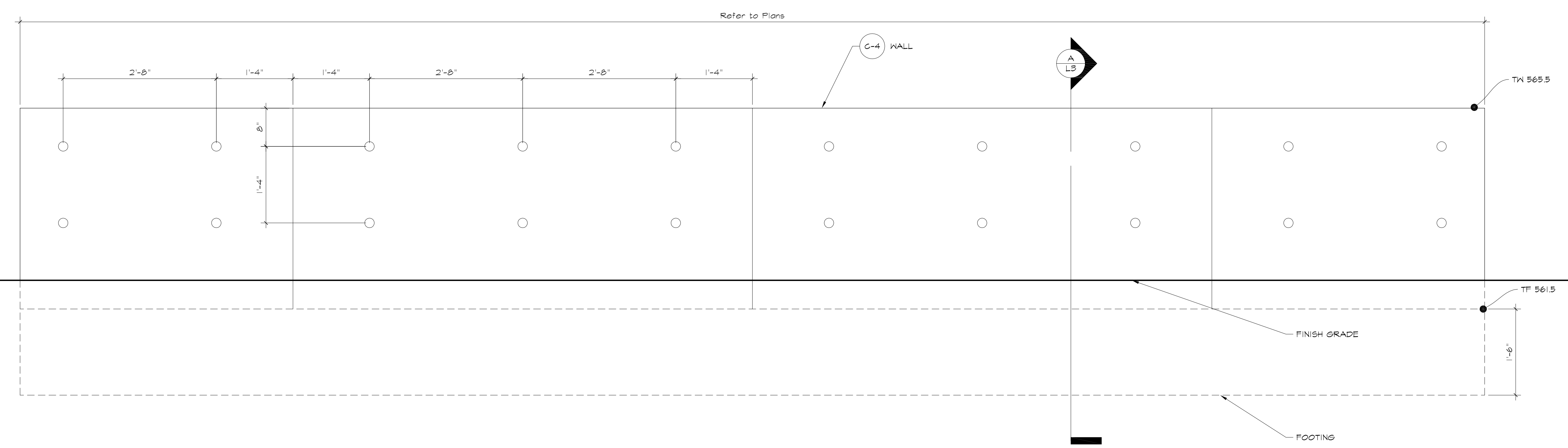
Steel Edging @ Planting D



NOTE:
PERFORM PERCOLATION TEST FOR EACH TREE PIT. PROVIDE GRAVEL SUMP, FILTER FABRIC, & STAND PIPE IF DRAINAGE DOES NOT OCCUR WITH IN 24 HRS. NO TREE SHALL BE PLANTED CLOSER THAN 5'-0" FROM THE EDGE OF PARKING LOT OR SIDEWALK.

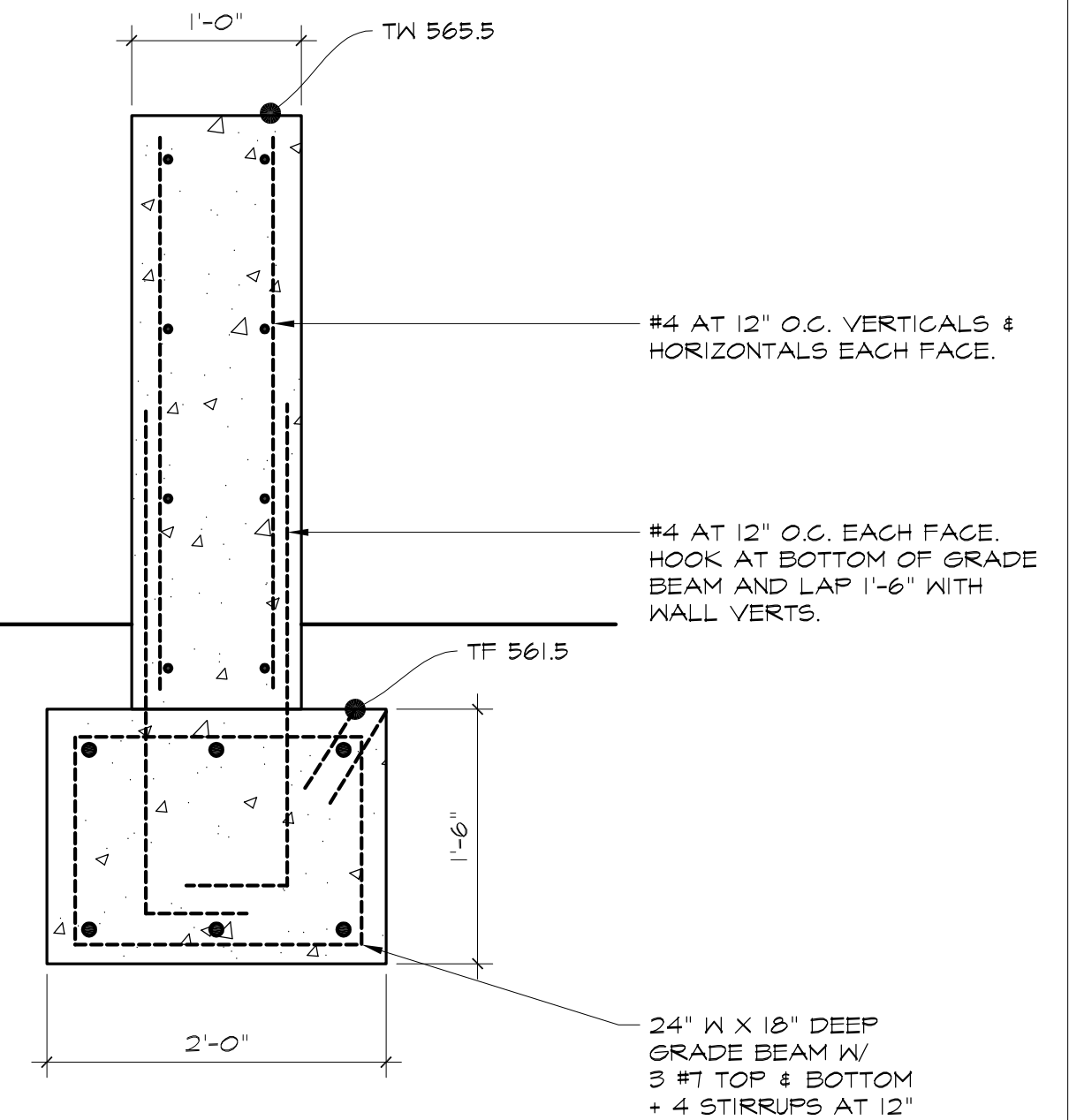
B&B - 6" or Greater C

Scale: 1/2" = 1'-0"



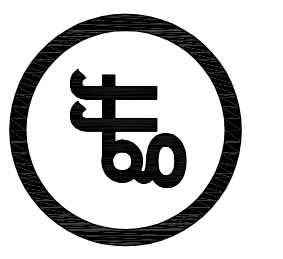
Concrete Wall Elevation B

Scale: 1" = 1'-0"



Concrete Wall Reinforcing Detail A

Scale: 1" = 1'-0"



No.	Date	Item

BG
 Drawn
 BG/PF
 Checked
 SI
 Approved
 06/28/2012

Details