

Client: Town of Addison Date: 1/2/18
 Program: ADA Self-Evaluation and Transition Plan Prepared By: CMP
 KHA No.: 063543021 Checked By: EPE

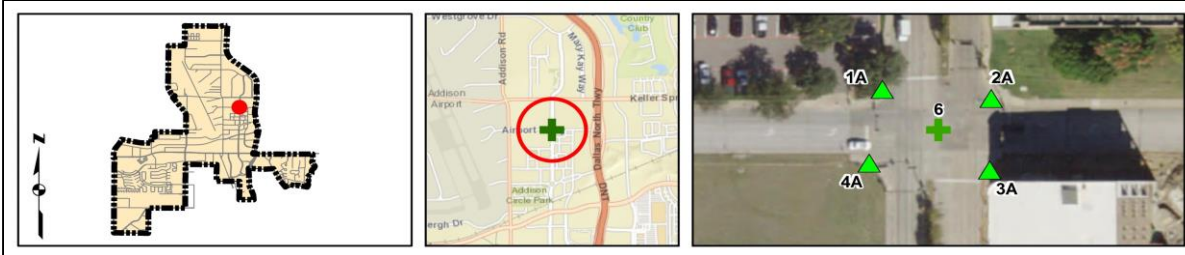
Corridor: Airport Pkwy GPS ID: 6
 Project Name: Intersection of Quorum Dr and Airport Pkwy
 Town: Addison

Item No.	Item Description	Quantity	Unit	Unit Price	Item Cost
TxDOT 110-6001	EXCAVATION (ROADWAY)	0	CY	\$ 10.00	\$ -
TxDOT 529-6002	CONC CURB (TY II)	0	LF	\$ 15.00	\$ -
TxDOT 531-6001	CONC SIDEWALKS (4')	29	SY	\$ 45.00	\$ 1,305.00
TxDOT 531	CURB RAMPS	6	EA	\$ 1,500.00	\$ 9,000.00
TxDOT 5003-6002	RETROFIT DET WARN SURF (CAST IN PLACE)	0	SF	\$ 50.00	\$ -
TxDOT 104-6015	REMOVING CONC (SIDEWALKS)	79	SY	\$ 9.00	\$ 711.00
TxDOT 687-6002	PEDESTRIAN PUSH BUTTON POLE	0	EA	\$ 1,400.00	\$ -
TxDOT 677	ELIM EXT PAVE MRK & MRKS	0	LF	\$ 2.80	\$ -
TxDOT 666/678	REFL PAV MRK PREP, TY I & TY II (W) 24"(SLD)	533	LF	\$ 8.50	\$ 4,530.50
TxDOT 688-6001	PED DETECT PUSH BUTTON (APS)	8	EA	\$ 1,300.00	\$ 10,400.00
TxDOT 690-6030	REMOVAL OF PEDESTRIAN PUSH BUTTONS	8	EA	\$ 125.00	\$ 1,000.00
	RELOCATE PEDESTRIAN PUSH BUTTONS	0	EA	\$ 300.00	\$ -
TxDOT 682-6018	PED SIG SEC (LED) (COUNTDOWN)	0	EA	\$ 500.00	\$ -
	PEDESTRIAN PUSH BUTTON SIGN	0	EA	\$ 150.00	\$ -
	REMOVE PEDESTRIAN PUSH BUTTON SIGN	0	EA	\$ 50.00	\$ -
	REPAVE ROADWAY	2	LS	\$ 5,000.00	\$ 10,000.00
	FIX PONDING	0	LS	\$ 2,000.00	\$ -
	FIX CURB RAMP TRANSITION	1	LS	\$ 2,000.00	\$ 2,000.00
	MEDIAN NOSE MODIFICATION	0	LS	\$ 5,000.00	\$ -
	REMOVE TEMPORARY OBSTRUCTION	0	LS	\$ 500.00	\$ -
	FIX CURB RAMP COUNTER SLOPE	2	LS	\$ 2,000.00	\$ 4,000.00

Basis for Cost Projection

<input checked="" type="checkbox"/> No Design Completed	Subtotal:	\$ 42,946.50
<input type="checkbox"/> Preliminary Design	Engineering: (% +/-)	20% \$ 9,026.75
<input type="checkbox"/> Final Design	Contingency: (% +/-)	20% \$ 9,026.75
	Estimated Project Cost:	\$ 61,000.00

Project Location



Field Observations

Intersection Issues	Crosswalk				Possible Solutions
	N	E	S	W	
Path of travel pavement condition	Poor	Good	Good	Poor	Repare roadway and install crosswalk pavement markings
Path of travel running slope is greater than 5%					
Path of travel cross slope is greater than 5%					
Crosswalk width is less than 6'	N/A	N/A	N/A	N/A	
Crosswalk striping condition	None	None	None	None	Install crosswalk pavement markings

Curb Ramp Issues	Curb Ramp ID ('2' or '1' in ramp label indicates no existing ramp)				Possible Solutions
	1A	2A	3A	4A	
Curb ramp does not exist and is needed					
Curb ramp does not land in crosswalk					
No 4' x 4' clear space at base of curb ramp					
Curb ramp side is not 90° or has traversable adjacent surface					
Flare cross slope is greater than 10%		X		X	
Curb ramp running slope is greater than 8.3%	X	X		X	
Blended transition running slope is greater than 5%					
Cut-thru ramp running slope is greater than 5%					
Curb ramp cross slope is greater than 2%	X	X			Remove and replace curb ramp
Cut-thru ramp cross slope is greater than 5%					
Curb ramp width is less than 48"					
Cut-thru ramp width is less than 60"					
Permanent obstruction (>0.25") in curb ramp/landing/flares					
Temporary obstruction (>0.25") in curb ramp/landing/flares					
No textured surface at base of curb ramp	X	X		X	For intersection, commercial driveway, and park ramps, install color truncated domes
No color contrast at base of curb ramp	X	X		X	
Landing area does not exist and is needed					
Landing area is less than 5' x 5' or slopes greater than 2%	X	X	X		Remove and replace landing area
Missing or no pedestrian push buttons					
Pedestrian push button is offset more than 5' from the nearest crosswalk edge					
Pedestrian push button offset more than 10' from curb face					
Pedestrian push button is not parallel to crosswalk					
Pedestrian push button height is greater than 48"					
Pedestrian push button diameter is not 2"	X	X	X	X	Remove PBs and replace with APS push buttons
Pedestrian push button sign does not exist					
Pedestrian push button sign is not MUTCD approved					
Clear floor space does not exist and is needed	X				Install clear floor space
Clear floor space for pedestrian push button is less than 30" x 48" or has a slope greater than 2%		X	X	X	Remove and replace clear floor space
Missing or no pedestrian signal heads					
Curb ramp transition onto roadway is greater than 0.25"		X			Fix curb ramp transition
Counter slope of the gutter or street at the foot of the curb ramp is greater than 5%	X			X	Fix curb ramp counter slope
Ponding occurs at base of curb ramp					



Ramp 1A



Ramp 2A



Ramp 3A



Ramp 4A

Curb Ramp Recommendation Details:

Types 1-11 (Standard Corner Ramp)	6	EA
Type 20 (Median Ramps with Shared Landing)	0	EA
Type 21 (Median Cut-thru Ramp)	0	EA
Type 22 (Channelizing Island Cut-thru Ramp)	0	EA

Opinion of Probable Construction Cost Disclaimer:

The Engineer has no control over the cost of labor, materials, equipment, or over the Contractor's methods of determining prices or over competitive bidding or market conditions. Opinions of probable costs provided herein are based on the information known to Engineer at this time and represent only the Engineer's judgment as a design professional familiar with the construction industry. The Engineer cannot and does not guarantee that proposals, bids, or actual construction costs will not vary from its opinions of probable costs.

Project Location Map Sources:

Esri, DeLorme, NAVTEQ, USGS, Intermap, iPC, NRCAN, Esri Japan, METI, Esri China (Hong Kong), Esri (Thailand), TomTom, 2013, DigitalGlobe, GeoEye, i-cubed, USDA, AEX, Getmapping, Aerogrip, IGN, IGP, swisstopo, and the GIS User Community