

DGN NO. 30471

DATE: OCTOBER 25, 2004  
SHEET 19 OF 33

**BULK FUEL STORAGE AND DISPENSING SYSTEM ELECTRICAL SITE PLAN - TANK AREA**

DESIGNER: B.E.H.  
CADD TECH: D.M.B.  
PROJ. LEAD: J.H.B.  
CHECKED: D.R.V.  
APPROVED: M.S.

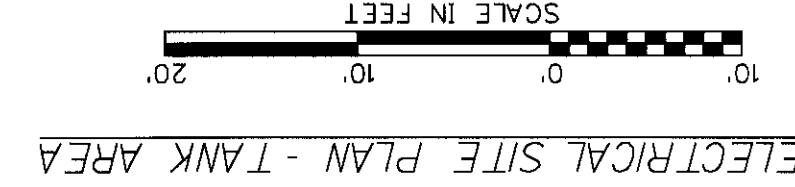
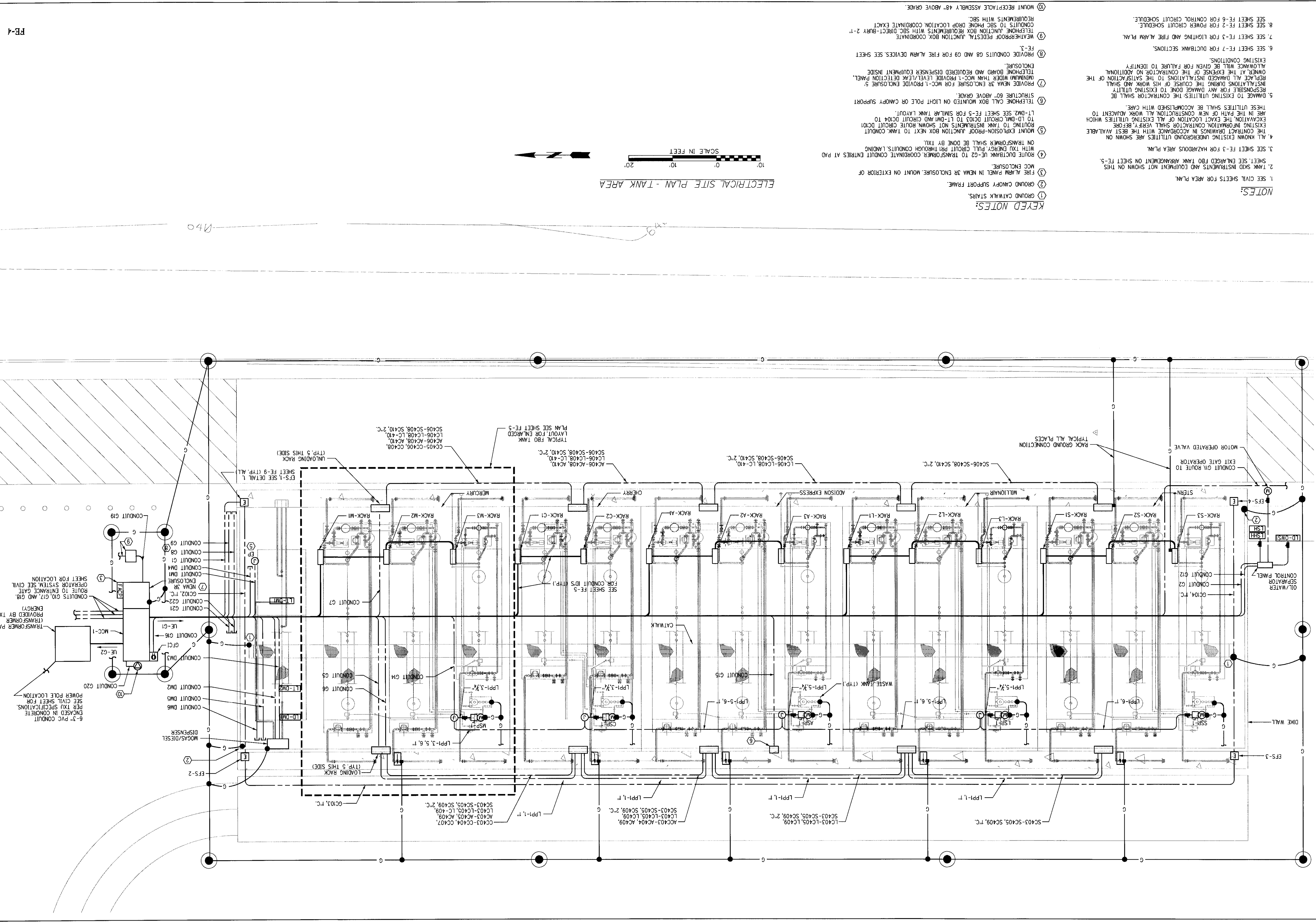
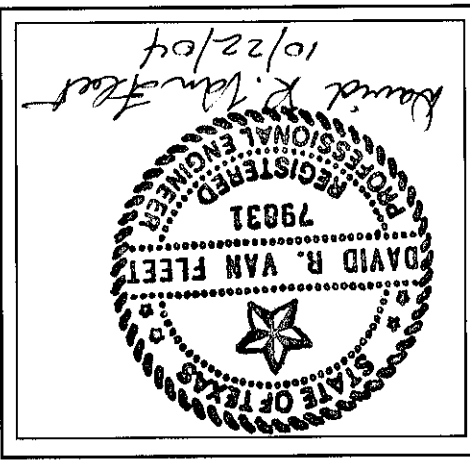
**Washington Group International**  
Integrated Engineering, Construction and Management Solutions

**Butts & McDowell**  
SINCE 1939

**Addison**  
ADDISON AIRPORT  
ADDISON, TEXAS

ADD - FUEL  
27514-000.0000200  
ISSUED FOR BID  
STAGE OF PLANS

REV.	DATE	DESCRIPTION	APP.



ELECTRICAL SITE PLAN - TANK AREA

- KEYED NOTES:**
- 1. SEE CIVIL SHEETS FOR AREA PLAN.
  - 2. TANK SMD INSTRUMENT AND EQUIPMENT NOT SHOWN ON THIS SHEET; SEE ENLARGED FOD TANK ARRANGEMENT ON SHEET FE-5.
  - 3. SEE SHEET FE-3 FOR HAZARDOUS AREA PLAN.
  - 4. ALL KNOWN EXISTING UNDERGROUND UTILITIES ARE SHOWN ON EXISTING INFORMATION; CONTRACTOR SHALL VERIFY, BEFORE ANY INSTALLATIONS DURING THE COURSE OF HIS WORK AND SHALL BE RESPONSIBLE FOR ANY DAMAGE DONE TO EXISTING UTILITY. DAMAGE TO EXISTING UTILITIES: THE CONTRACTOR SHALL BE RESPONSIBLE FOR ALL DAMAGE TO EXISTING UTILITIES WHICH ARE IN THE PATH OF NEW CONSTRUCTION AT WORK ADJACENT TO THESE UTILITIES SHALL BE ACCOMPLISHED WITH CARE.
  - 5. PROVIDE NECA OR ENCLOSURE FOR MCC-1 PROVIDE ENCLOSURE 5 TELEPHONE BOARD AND REQUIRED DISPENSER EQUIPMENT INSIDE ENCLOSURE.
  - 6. PROVIDE CONDUITS G8 AND G9 FOR FIRE ALARM DEVICES; SEE SHEET FE-3.
  - 7. WEATHERPROOF REDUCED JUNCTION BOX COORDINATE TELEPHONE JUNCTION BOX REQUIREMENTS WITH SEC DIRECT-BURY 2-T CONDUITS TO SBC PHONE DROP LOCATION COORDINATE EXACT REQUIREMENTS WITH SBC.
  - 8. SEE SHEET FE-2 FOR POWER CIRCUIT SCHEDULE.
  - 9. SEE SHEET FE-3 FOR LIGHTING AND FIRE ALARM PLAN.
  - 10. MOUNT RECEPTACLE ASSEMBLY 48" ABOVE GRADE.
- NOTES:**
- 1. SEE CIVIL SHEETS FOR AREA PLAN.
  - 2. TANK SMD INSTRUMENT AND EQUIPMENT NOT SHOWN ON THIS SHEET; SEE ENLARGED FOD TANK ARRANGEMENT ON SHEET FE-5.
  - 3. SEE SHEET FE-3 FOR HAZARDOUS AREA PLAN.
  - 4. ALL KNOWN EXISTING UNDERGROUND UTILITIES ARE SHOWN ON EXISTING INFORMATION; CONTRACTOR SHALL VERIFY, BEFORE ANY INSTALLATIONS DURING THE COURSE OF HIS WORK AND SHALL BE RESPONSIBLE FOR ANY DAMAGE DONE TO EXISTING UTILITY. DAMAGE TO EXISTING UTILITIES: THE CONTRACTOR SHALL BE RESPONSIBLE FOR ALL DAMAGE TO EXISTING UTILITIES WHICH ARE IN THE PATH OF NEW CONSTRUCTION AT WORK ADJACENT TO THESE UTILITIES SHALL BE ACCOMPLISHED WITH CARE.
  - 5. PROVIDE NECA OR ENCLOSURE FOR MCC-1 PROVIDE ENCLOSURE 5 TELEPHONE BOARD AND REQUIRED DISPENSER EQUIPMENT INSIDE ENCLOSURE.
  - 6. PROVIDE CONDUITS G8 AND G9 FOR FIRE ALARM DEVICES; SEE SHEET FE-3.
  - 7. WEATHERPROOF REDUCED JUNCTION BOX COORDINATE TELEPHONE JUNCTION BOX REQUIREMENTS WITH SEC DIRECT-BURY 2-T CONDUITS TO SBC PHONE DROP LOCATION COORDINATE EXACT REQUIREMENTS WITH SBC.
  - 8. SEE SHEET FE-2 FOR POWER CIRCUIT SCHEDULE.
  - 9. SEE SHEET FE-3 FOR LIGHTING AND FIRE ALARM PLAN.
  - 10. MOUNT RECEPTACLE ASSEMBLY 48" ABOVE GRADE.