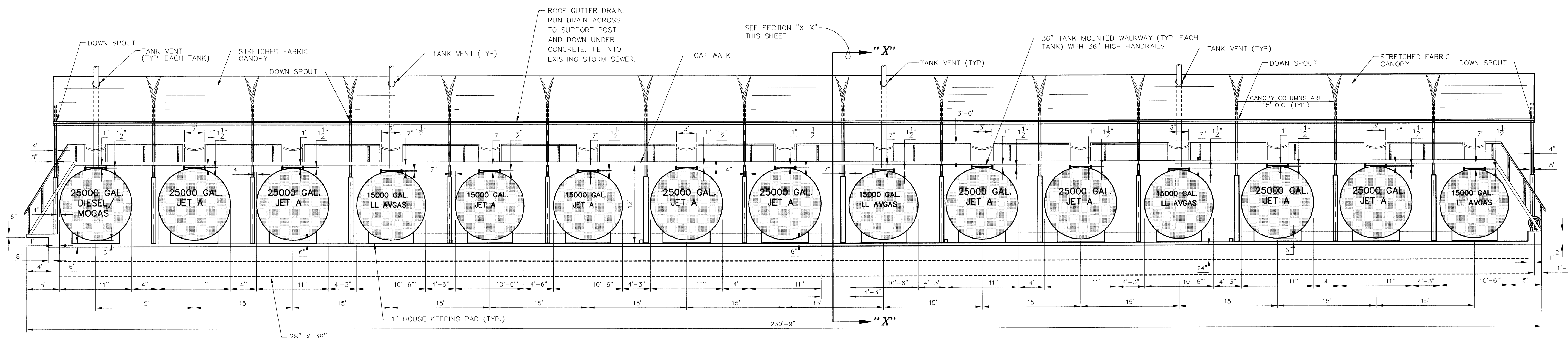


SECTION "X-X"
CANOPY STRUCTURE DETAIL
 SCALE: 1/8" = 1'-0"

ALTERNATE BID ITEM
GENERAL NOTES:

- THIS STRETCHED FABRIC CANOPY SYSTEM IS A PERFORMANCE SPECIFICATION, CONSISTS OF THREE PARTS: THE STEEL FRAME STRUCTURE, THE STRETCHED FABRIC PANELS AND THE GALVANIZED STEEL CATWALK OVER THE BULK FUEL STORAGE TANKS. PERFORMANCE REQUIREMENTS ARE: PROVIDE METAL FRAME STRETCHED FABRIC CANOPY SYSTEM CAPABLE OF WITHSTANDING HORIZONTAL WIND LOADS OF 90 MPH, SNOW AND ICE LOADS OF 10 PSF AND WIND-UPLIFT RESISTANCE OF 90 MPH.
1. THE METAL FRAME SYSTEMS WILL BE SIZED TO CARRY THE FABRIC CANOPY SECTIONS UNDER THE LOADS INDICATED AND SPACED AS INDICATED BETWEEN FUEL STORAGE TANKS WITHIN AND ON THE SECONDARY CONTAINMENT STRUCTURE. THE METAL FRAMING SYSTEM WILL BE 2-HOUR FIRE RATED USING SPRAYED CEMENTITIOUS FIRE RESISTIVE MATERIALS OR SIMILAR PRODUCTS. THE METAL FRAME SYSTEM WILL HAVE THE APPROPRIATE BRACING AND CROSS MEMBERS AND THE OUTSIDE LENGTH, EACH SIDE, WILL HAVE RAIN GUTTERS MOUNTED TO CAPTURE AND DRAIN RAINWATER INTO THE STORM SEWER AS INDICATED. PROVIDE DOWN SPOUTS AND CONNECTION TO STORMLINE "D" AND "E" (GUTTER DRAIN) EVERY THIRD COLUMN.
 2. THE STRETCHED FABRIC CANOPY WILL BE COMPOSED OF A 20 YEAR RATED/ 15 YEAR WARRANTED PVC COATED POLYESTER CONSTRUCTED IN PANELS THAT CAN BE ATTACHED TO THE FRAMING STRUCTURE IN A METHOD THAT ALLOWS REPLACEMENT OF THE PANELS AS ROUTINE MAINTENANCE AND REPAIR OF THE FABRIC CANOPY. THE FABRIC MUST BE NON-FLAMMABLE (WILL NOT SUPPORT COMBUSTION) AND SHOULD MELT OR "SHRINK" BACK IF EXPOSED TO FLAME. FABRIC SHALL BE WATERPROOF. IT IS ASSUMED THAT THE COLOR OF THE CANOPY FABRIC WILL BE WHITE OR OFF-WHITE.
 3. THE GALVANIZED STEEL CATWALK MAY BE ATTACHED TO THE CENTER COLUMNS OF THE CANOPY STEEL IF A CENTER POST IS USED.
 4. PROVIDE SUBMITTALS ON CANOPY STRUCTURE, CONNECTIONS, DETAILS AND MOUNTING TO CONCRETE STRUCTURE OR LOW WALL STRUCTURAL DESIGN AND CALCULATIONS MUST BE SEALED BY A REGISTERED ENGINEER.



SECTION "Y-Y"
EAST SECTION VIEW
 SCALE: 1/8" = 1'-0"

ISSUED FOR BID	STAGE OF PLANS	APP.
ADD - FUEL	27514-000.00020	
TL-wing-ALT1.dwg	CADD FILE NO.	
REV.	DATE	DESCRIPTION

Burns & McDonnell
 SINCE 1898

Washington Group International
 Integrated Engineering, Construction, and Management Solutions
 PHONE (303) 443-2000 FAX (303) 443-3133

Addison!
 ADDISON AIRPORT
 ADDISON, TEXAS

BULK FUEL STORAGE AND DISPENSING SYSTEM SECTION "Y-Y" AND CANOPY STRUCTURE DETAIL ALTERNATE BID

DESIGNER: S.C.L.
 CADD TECH: T.R.B.

PROJ. LEAD: S.C.L.
 CHECKERS: S.C.L./T.P.R.

APPROVED B.O.N.

DATE: OCTOBER 25, 2004
 SHEET 33 OF 33