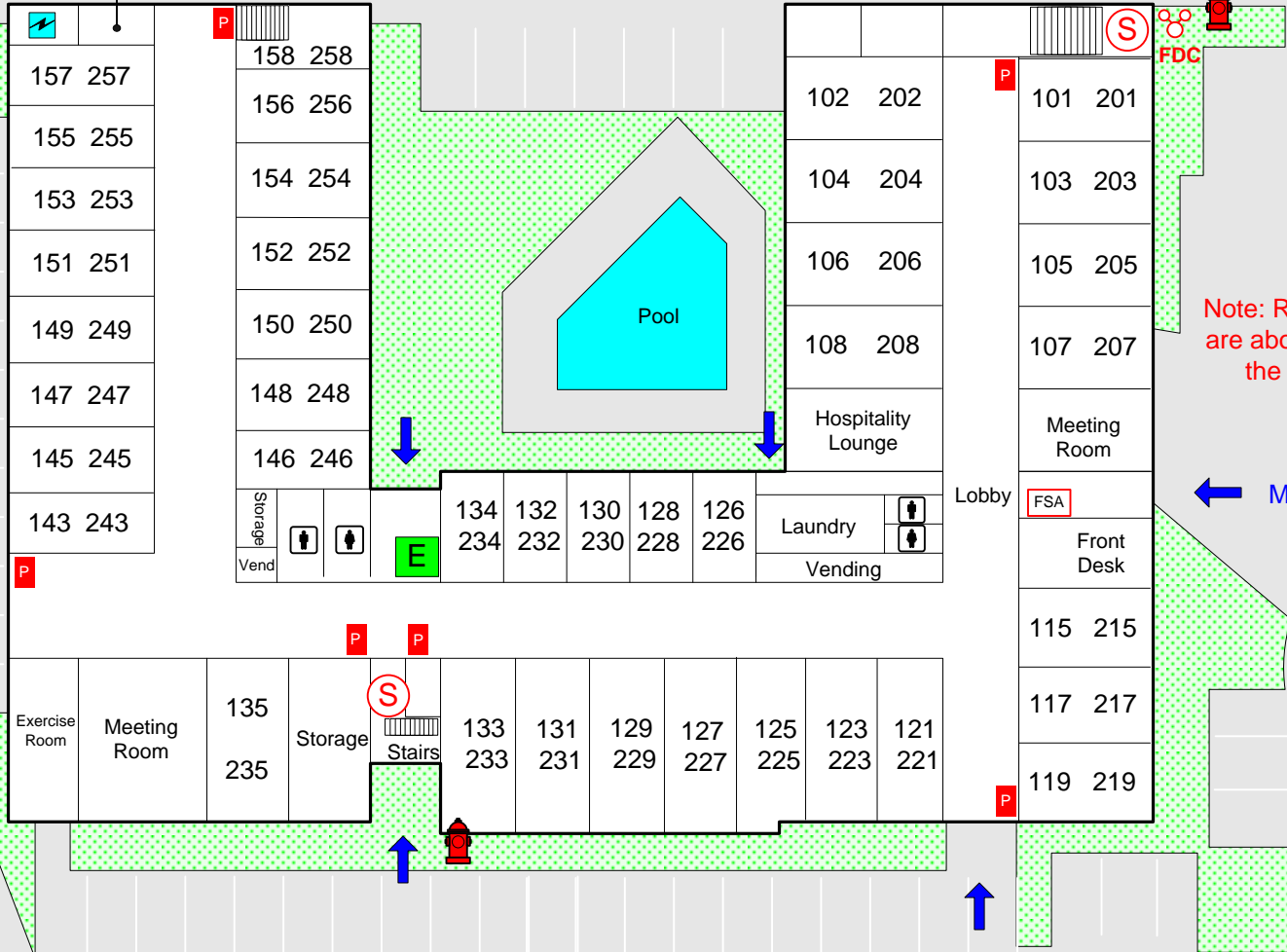


14975 Landmark Blvd. Comfort Inn

Guest
Laundry



Note: Rooms 209 - 212
are above the lobby on
the second floor

Main Entrance

FSA	FIRE ALARM PANEL	P	Pull Station		FIRE HYDRANT
	FIRE DEPT. CONNECTION		MAIN WATER SHUTOFF		ELEVATOR
	ENTRANCE / EXIT		ELECTRICAL MAIN		STAIRS
	KNOX BOX		GAS SHUTOFF VALVE		STANDPIPE CONNECTION



Addison!
FIRE DEPARTMENT
OPERATIONS
DIVISION