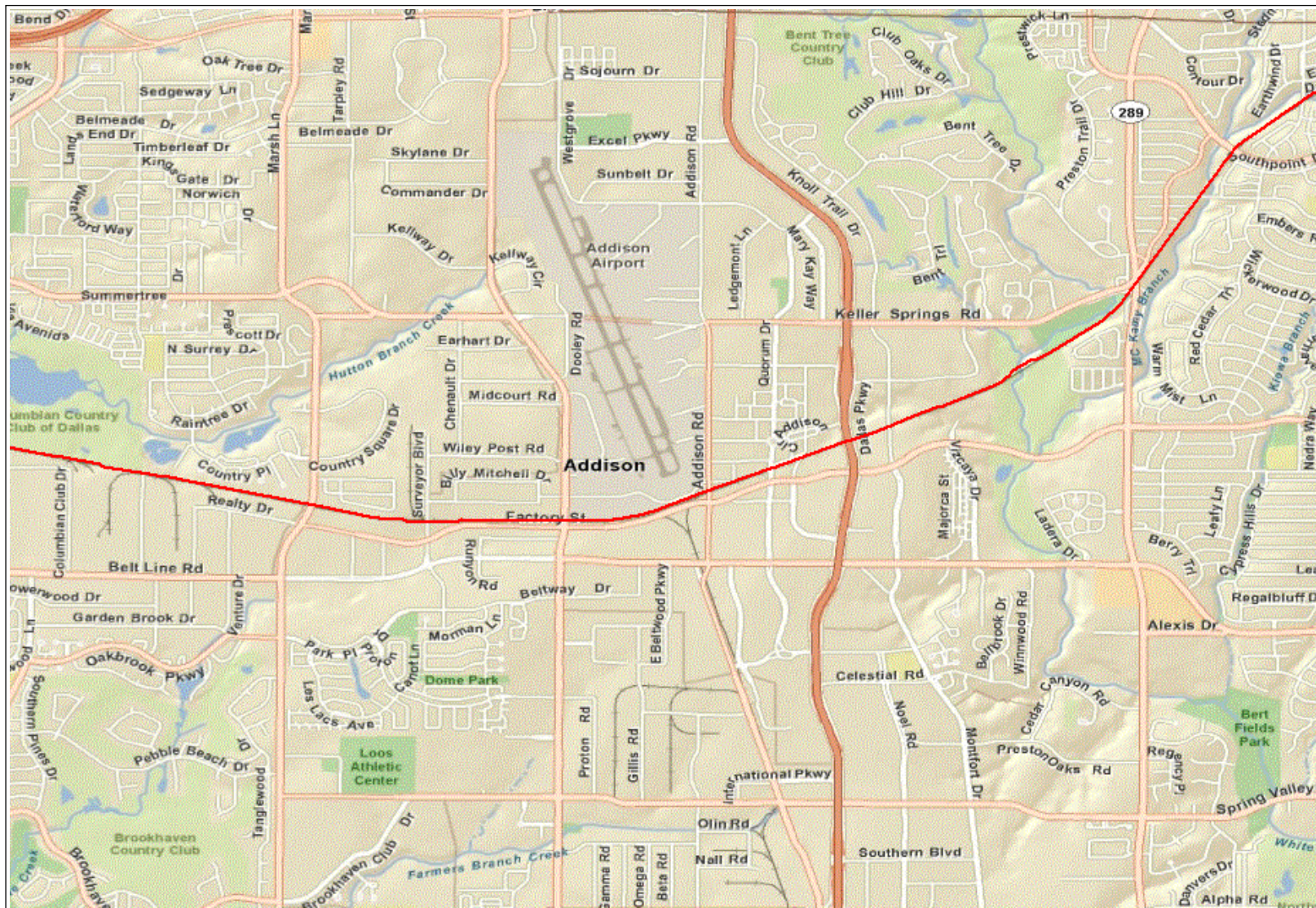


NATIONAL PIPELINE MAPPING SYSTEM



Legend

- Gas Transmission Pipelines
- Hazardous Liquid Pipelines

Pipelines depicted on this map represent gas transmission and hazardous liquid lines only. Gas gathering and gas distribution systems are not represented.

This map should never be used as a substitute for contacting a one-call center prior to excavation activities. Please call 811 before any digging occurs.

Questions regarding this map or its contents can be directed to npsms-nr@mbakercorp.com.

Projection: Geographic

Datum: NAD83

Map produced by the NPMS Public Viewer at www.npsms.phmsa.dot.gov

Date Printed: Feb 10, 2012



PIPELINE ATTRIBUTES

Record #1

OPERATOR	EXPLORER PIPELINE COMPANY
CONTACT PHONE NUMBER	918-493-5104
COMMODITY DESCRIPTION	REFINED PETROLEUM PRODUCTS
SYSTEM NAME	EXPLORER PIPELINE CO
SUBSYSTEM NAME	GREENVILLE TO CARROLLTON JUNCTION
DIAMETER	12.75
T4PERMIT	00018
T4PERMIT MILES	908.19
P5 NUMBER	257095
COMMODITY	Product
INTERSTATE	Yes
SYSTEM TYPE	Non-HVL Liquid Products
STATUS	In Service