

ORDINANCE NO. 090-022

AN ORDINANCE OF THE TOWN OF ADDISON, TEXAS, AMENDING THE SIGN ORDINANCE OF THE TOWN OF ADDISON, TEXAS, SO AS TO GRANT A MERITORIOUS EXCEPTION TO THE CITY'S SIGN ORDINANCE TO ALLOW AN ATTACHED SIGN WITH 42-INCH LETTER HEIGHTS, ON APPLICATION WITH AUTOHAUS, LOCATED AT 15223 DALLAS PARKWAY PROVIDING FOR A REPEAL CLAUSE; PROVIDING FOR A PENALTY CLAUSE; AND PROVIDING FOR A SEVERABILITY CLAUSE.

BE IT ORDAINED BY THE CITY COUNCIL OF THE TOWN OF ADDISON, TEXAS:

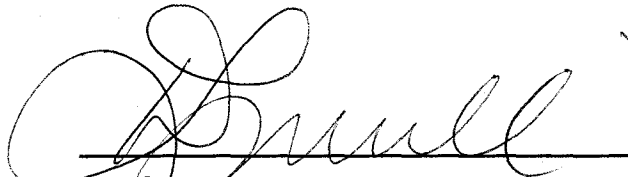
SECTION 1. In accordance with Section 8 of the Sign Ordinance a meritorious exception is hereby granted to Autohaus located at 14223 Dallas Parkway, to allow an attached sign with 42-inch letter heights, in accordance with the drawings attached hereto and made a part hereof for all purposes.

SECTION 2. That all ordinances of the City in conflict with the provisions of this ordinance be, and the same are hereby repealed and all other ordinances of the City not in conflict with the provisions of this ordinance shall remain in full force and effect.

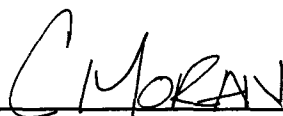
SECTION 3. That any person, firm, or corporation violating any of the provisions or terms of this ordinance shall be subject to a fine not to exceed the sum of Four Hundred Dollars (\$400.00) for each offense and that each day such violation shall continue to exist shall constitute a separate offense.

SECTION 4. That should any paragraph, sentence, subdivision, clause, phrase or section of this ordinance be adjudged or held to be unconstitutional, illegal or invalid, the same shall not affect the validity of this ordinance as a whole or any part or provisions thereof other than the part so decided to be invalid, illegal or unconstitutional, and shall not affect the validity of this ordinance as a whole.

DULY PASSED BY THE CITY COUNCIL OF THE TOWN OF ADDISON, TEXAS, on this the 22nd day of May, 1990.


MAYOR

ATTEST:


CITY SECRETARY

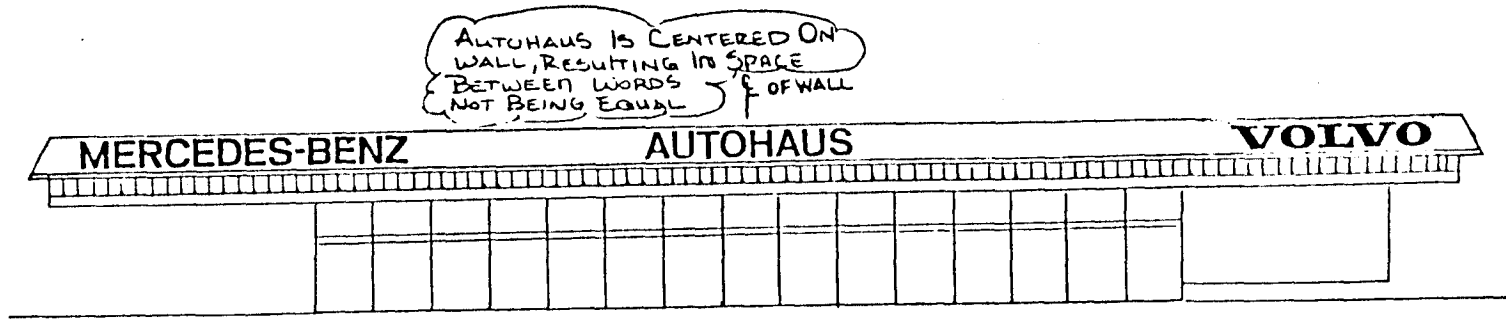
CASE NO. M.E. #58

APPROVED AS TO FORM:

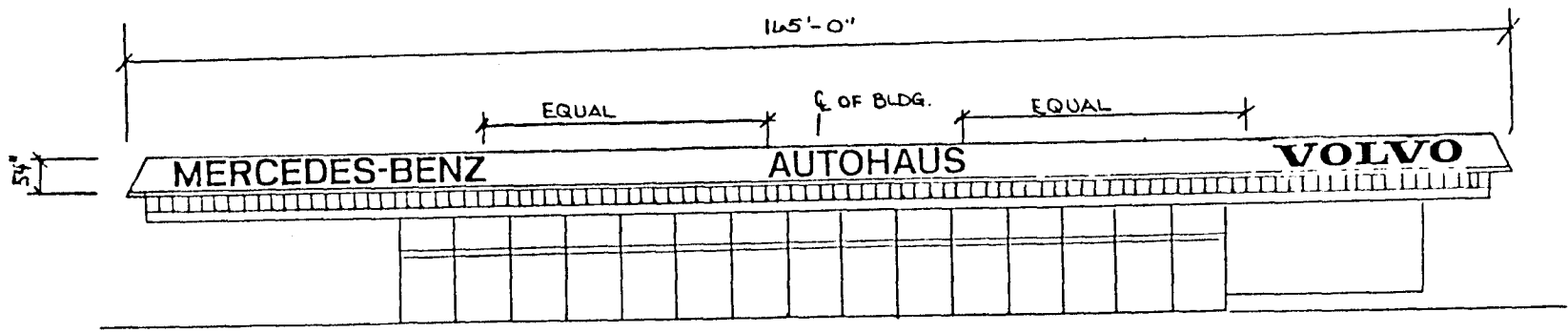


Published 6-7-90

APPROVED



LAYOUT A



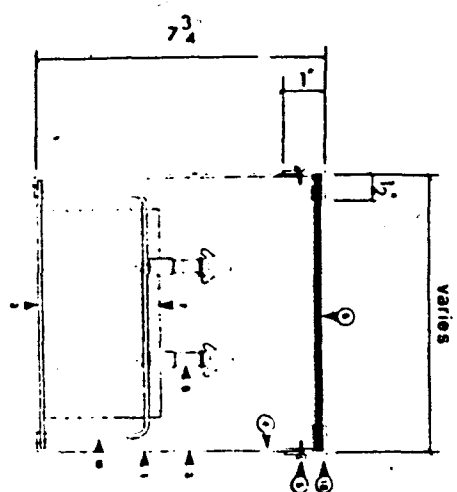
LAYOUT B

AUTOHAUS IS CENTERED BETWEEN M.B. & VOLVO

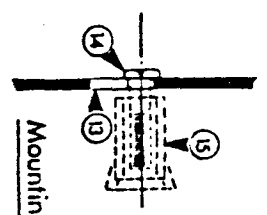
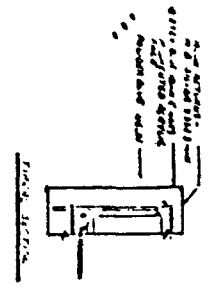
MERCEDES-BENZ

AUTOHAUS

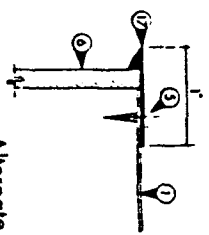
VOLVO



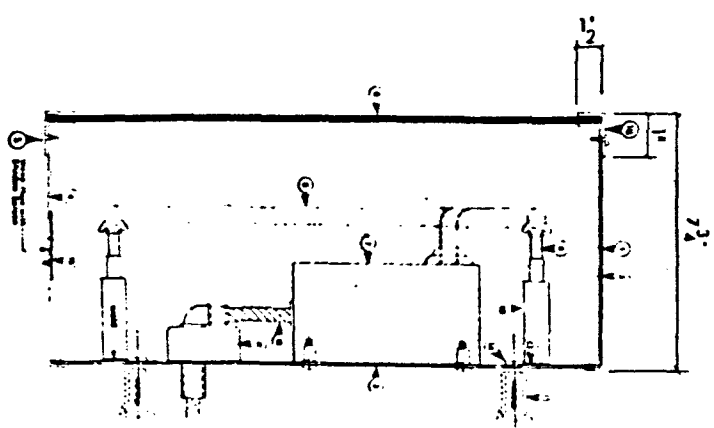
Letter Section B



Mounting Detail



Alternate Face Detail

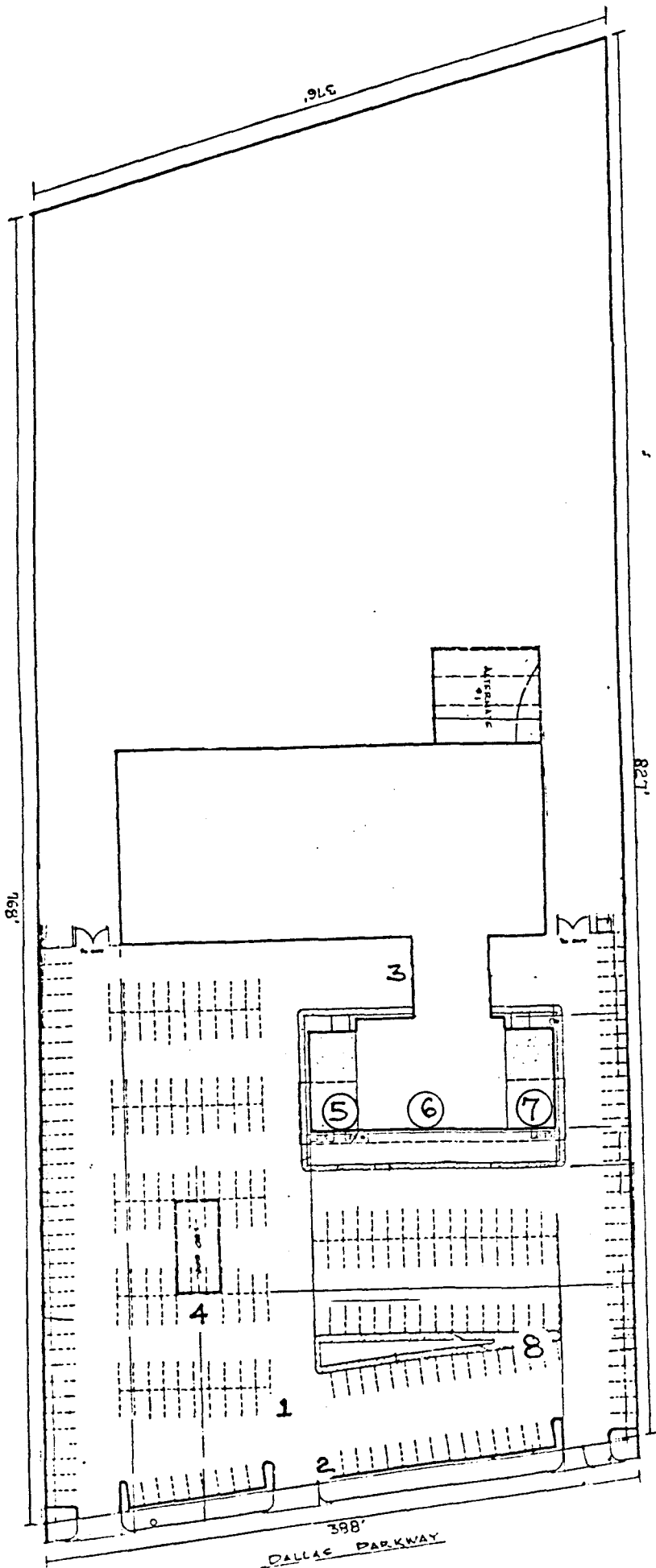


Letter Section A

Bill of Materials

No.	Qty.	Description	Quantity
1		TOP COVER	1
2		MAIN BODY	1
3		BASE	1
4		FASTENERS	10
5		INTERNAL COMPONENTS	10
6		FASTENERS	10
7		FASTENERS	10
8		FASTENERS	10
9		FASTENERS	10
10		FASTENERS	10
11		FASTENERS	10
12		FASTENERS	10
13		FASTENERS	10
14		FASTENERS	10
15		FASTENERS	10
16		FASTENERS	10
17		FASTENERS	10
18		FASTENERS	10
19		FASTENERS	10
20		FASTENERS	10
21		FASTENERS	10
22		FASTENERS	10
23		FASTENERS	10
24		FASTENERS	10
25		FASTENERS	10

APPROVED



PROPOSED SIGNAGE

1. MB Alternate Pylon
2. Directional Sign
3. Multifunctional Wall Sign
4. Multifunctional Wall Sign
5. MB Letters
6. Autohaus Letters
7. Volvo Letters
8. Volvo Pylon

APPROVED