

**ORDINANCE NO. 095-048**

AN ORDINANCE OF THE TOWN OF ADDISON, TEXAS, AMENDING CHAPTER 14, SIGNS, OF THE CODE OF ORDINANCES, SO AS TO GRANT A MERITORIOUS EXCEPTION TO THE CITY'S SIGN ORDINANCE TO ALLOW TWO FLAG POLES AT A HEIGHT OF 40 FEET, AN ATTACHED SIGN WITH LARGER LETTER HEIGHT THAN ALLOWED BY ORDINANCE, AND A TEMPORARY BANNER, ON APPLICATION WITH PEPSICO/PIZZA HUT, LOCATED AT 14841 DALLAS PARKWAY, PROVIDING FOR A REPEAL CLAUSE; PROVIDING FOR A PENALTY CLAUSE; AND PROVIDING FOR A SEVERABILITY CLAUSE.

BE IT ORDAINED BY THE CITY COUNCIL OF THE TOWN OF ADDISON, TEXAS:

SECTION 1. In accordance with Section 14-118 of the Sign Ordinance a meritorious exception is hereby granted to Pepsico/Pizza Hut, located at 14841 Dallas Parkway, to allow two flag poles at a height of 40 feet, an attached sign with larger letter height than allowed by ordinance, and a temporary banner, in accordance with the drawings attached hereto and made a part hereof for all purposes.

SECTION 2. That all ordinances of the City in conflict with the provisions of this ordinance be, and the same are hereby repealed and all other ordinances of the City not in conflict with the provisions of this ordinance shall remain in full force and effect.

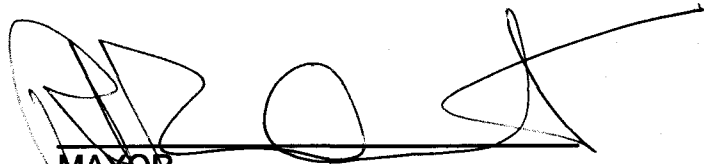
SECTION 3. That any person, firm, or corporation violating any of the provisions or terms of this ordinance shall be subject to a fine not to exceed the sum of Two Hundred Dollars (\$200.00) for each offense and that each day such violation shall continue to exist shall constitute a separate offense.

OFFICE OF THE CITY SECRETARY

ORDINANCE NO. 095-048

SECTION 4. That should any paragraph, sentence, subdivision, clause, phrase or section of this ordinance be adjudged or held to be unconstitutional, illegal or invalid, the same shall not affect the validity of this ordinance as a whole or any part or provisions thereof other than the part so decided to be invalid, illegal or unconstitutional, and shall not affect the validity of this ordinance as a whole.

DULY PASSED BY THE CITY COUNCIL OF THE TOWN OF ADDISON,  
TEXAS, on this the 26th day of September, 1995.



MAYOR

ATTEST:



CITY SECRETARY

CASE NO. ME 95-09

APPROVED AS TO FORM:



BUILDING OFFICIAL

OFFICE OF THE CITY SECRETARY

ORDINANCE NO. 095-048

Published  
11/30/95



**STARFIRE PROJECT**

14841 DALLAS NORTH PARKWAY  
ADDISON, TX 75240

OWNER: THE CRESCENT  
200 CRESCENT COURT, #550  
DALLAS, TX 75201

TENANT: PRI, PFS, PIZZA HUT

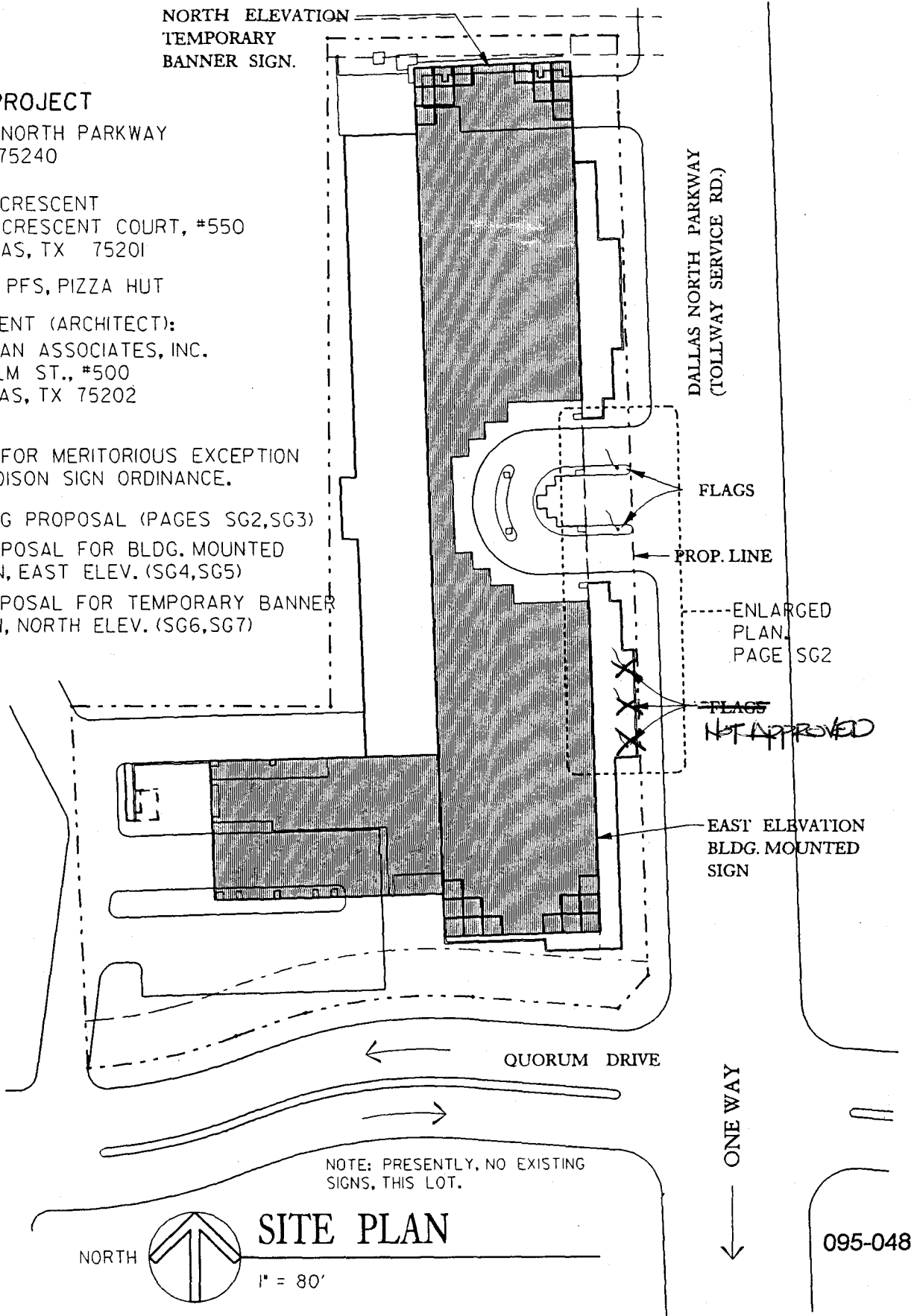
TENANT'S AGENT (ARCHITECT):  
CORGAN ASSOCIATES, INC.  
501 ELM ST., #500  
DALLAS, TX 75202

APPLICATION FOR MERITORIOUS EXCEPTION  
TOWN OF ADDISON SIGN ORDINANCE.

PART 1: FLAG PROPOSAL (PAGES SG2, SG3)

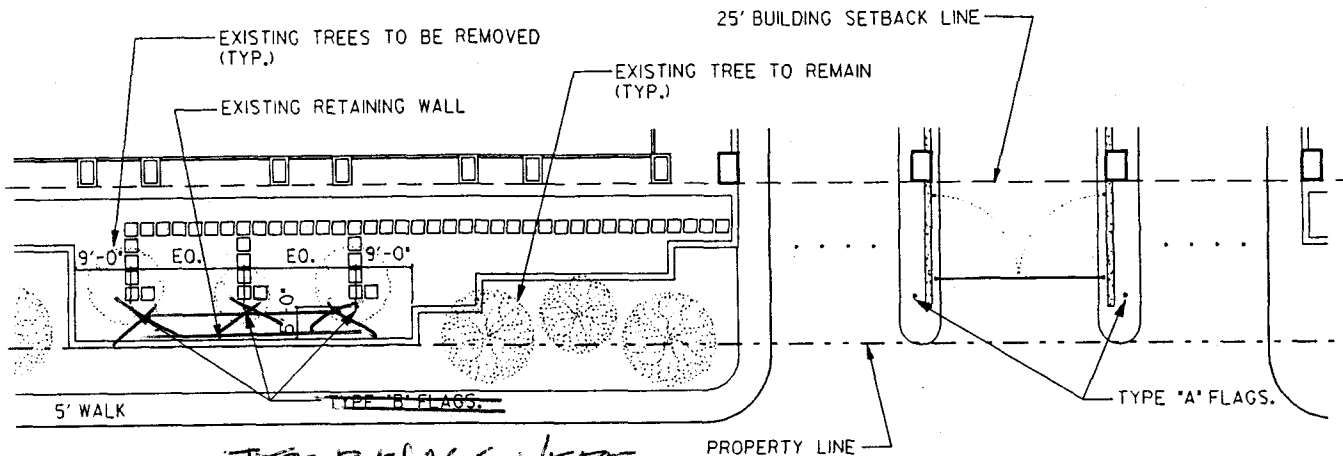
PART 2: PROPOSAL FOR BLDG. MOUNTED  
SIGN, EAST ELEV. (SG4, SG5)

PART 3: PROPOSAL FOR TEMPORARY BANNER  
SIGN, NORTH ELEV. (SG6, SG7)



095-048





TYPE B FLAGS WERE NOT APPROVED

1

SITE PLAN

1" = 30'

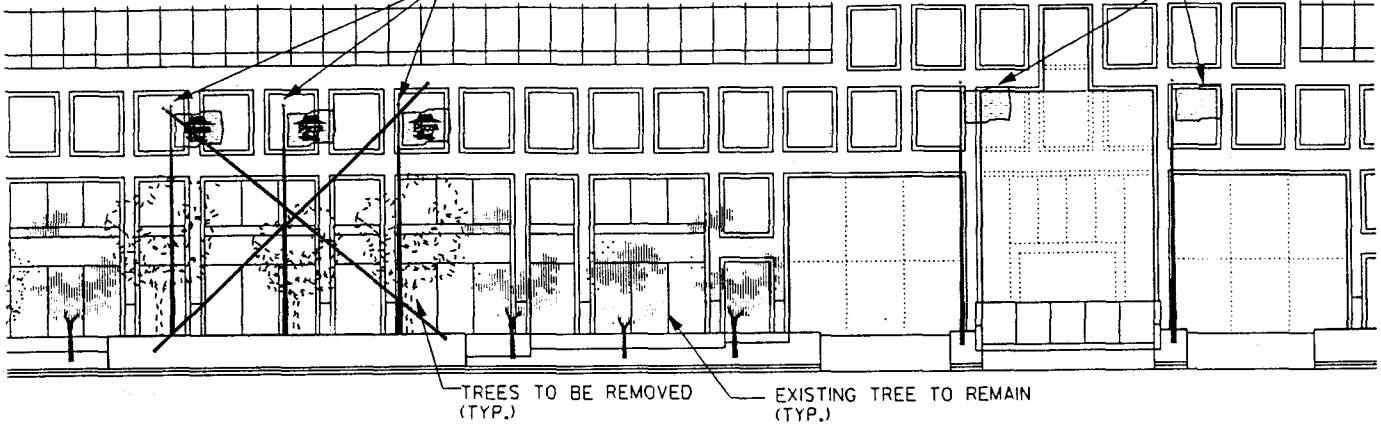
FLAGS SET 18'-0" BACK FROM CURB.

REFER SHEET SG3 FOR FLAG ELEVATIONS, DIMENSIONS AND DATA.

095-048

TYPE B FLAGS WERE  
NOT APPROVED

TYPE "A" FLAGS.



1

## EAST ELEVATION

1" = 30'

FLAG TYPE "A" (STATE OF TEXAS, NATIONAL FLAGS)

POLE HEIGHT: 40'-0"

APPROX. FLAG SIZE: 6'-0" x 4'-0"

FLAG TYPE "B" (CORPORATE LOGO FLAGS, 1 PER POLE)

POLE HEIGHT: 35'-0"

APPROX. FLAG SIZE: 6'-0" x 4'-0"

095-048

PAGE

SG3



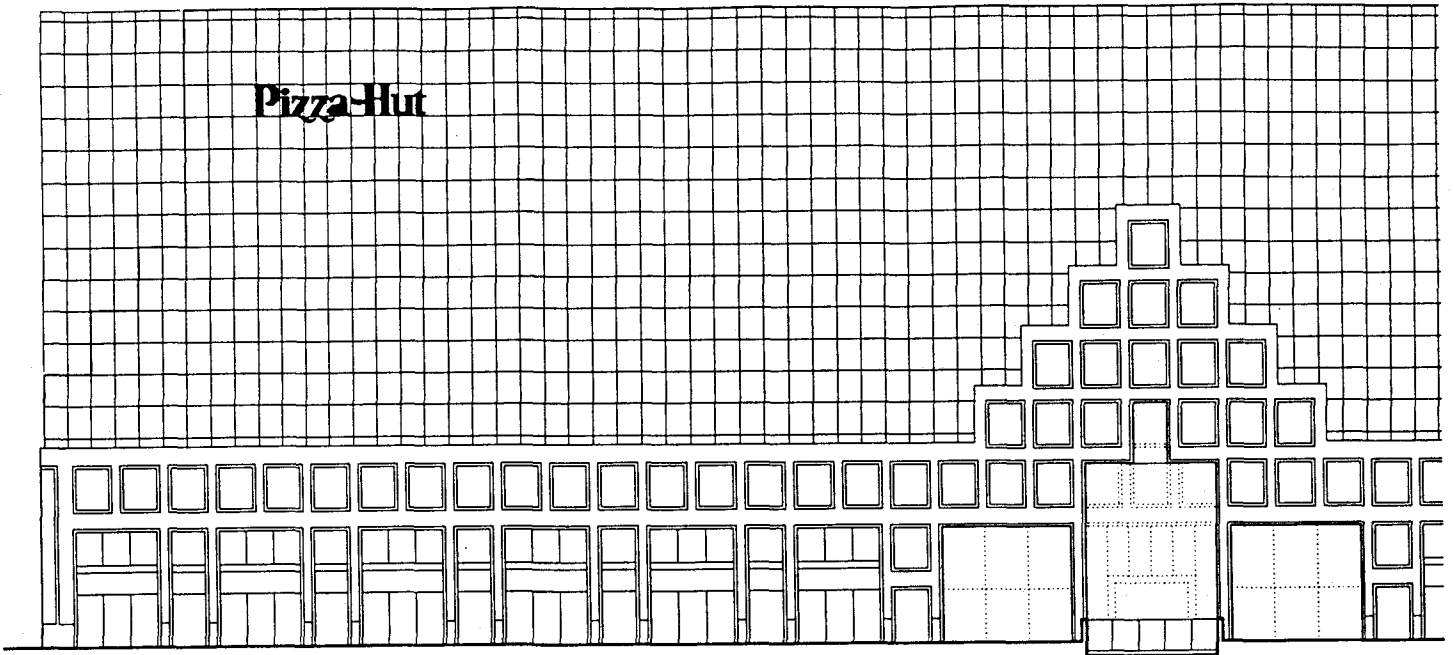
**PEPSICO**

NEW DALLAS OFFICE

ARCHITECT

ARCHITECT





SIGN  
EAST ELEVATION

1

NOT TO SCALE

REFER ENLARGED SIGN ELEVATION,  
PAGE "SG5" FOR DIMENSIONS AND DATA.

BACKLIT SIGN WITH COLORED FACE ATTACHED  
TO EAST BUILDING ELEVATION.

- MAXIMUM ALLOWABLE SIGN AREA  
BY ORDINANCE: 364 SF.
- PROPOSED: 287 SF.
  
- MAXIMUM LETTER/LOGO HEIGHT: 60".
- PROPOSED: 80".

095-048

PAGE

SG4



PEPSICO

NEW DALLAS OFFICE

PERFORM WELLNESS

ADAPTIVE DESIGN

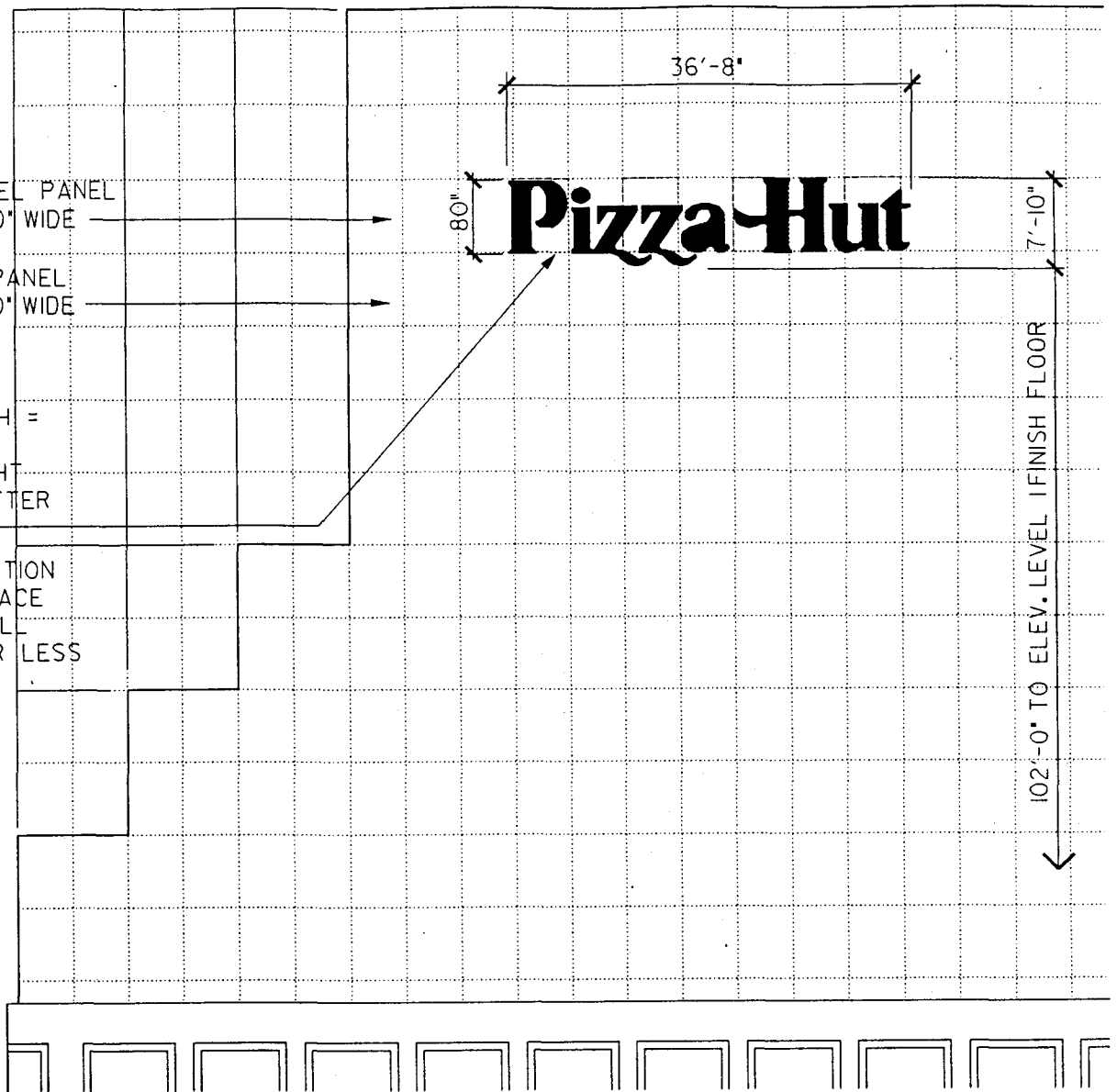


TYPICAL SPANDREL PANEL  
6'-8" HIGH x 5'-0" WIDE

TYPICAL VISION PANEL  
6'-6" HIGH x 5'-0" WIDE

36'-8"W x 7'-10"H =  
287 SF OVERALL  
SIGN AREA. HEIGHT  
OF LARGEST LETTER  
("H"): 6'-8".

MAXIMUM PROJECTION  
OF SIGN FROM FACE  
OF BUILDING SHALL  
BE EQUAL TO OR LESS  
THAN 18".



EAST ELEV.  
BUILDING SIGN

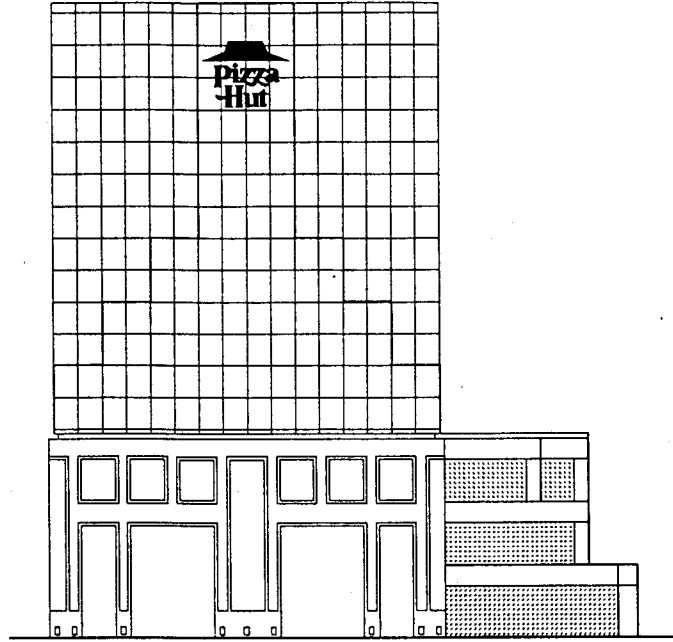
1

1/16" = 1'-0"

095-048







SIGN  
1 NORTH ELEVATION  
NOT TO SCALE

REFER ENLARGED SIGN ELEVATION,  
PAGE "SG7" FOR DIMENSIONS AND DATA.

TEMPORARY BANNER (9.26.95 - 12.15.95)  
PRINTED LETTERS ON VINYL BANNER -  
BACKGROUND COLOR TO MATCH EXISTING  
BUILDING FACADE.

BANNER SIZE: 19'-0" WIDE x 15'-0" HIGH.

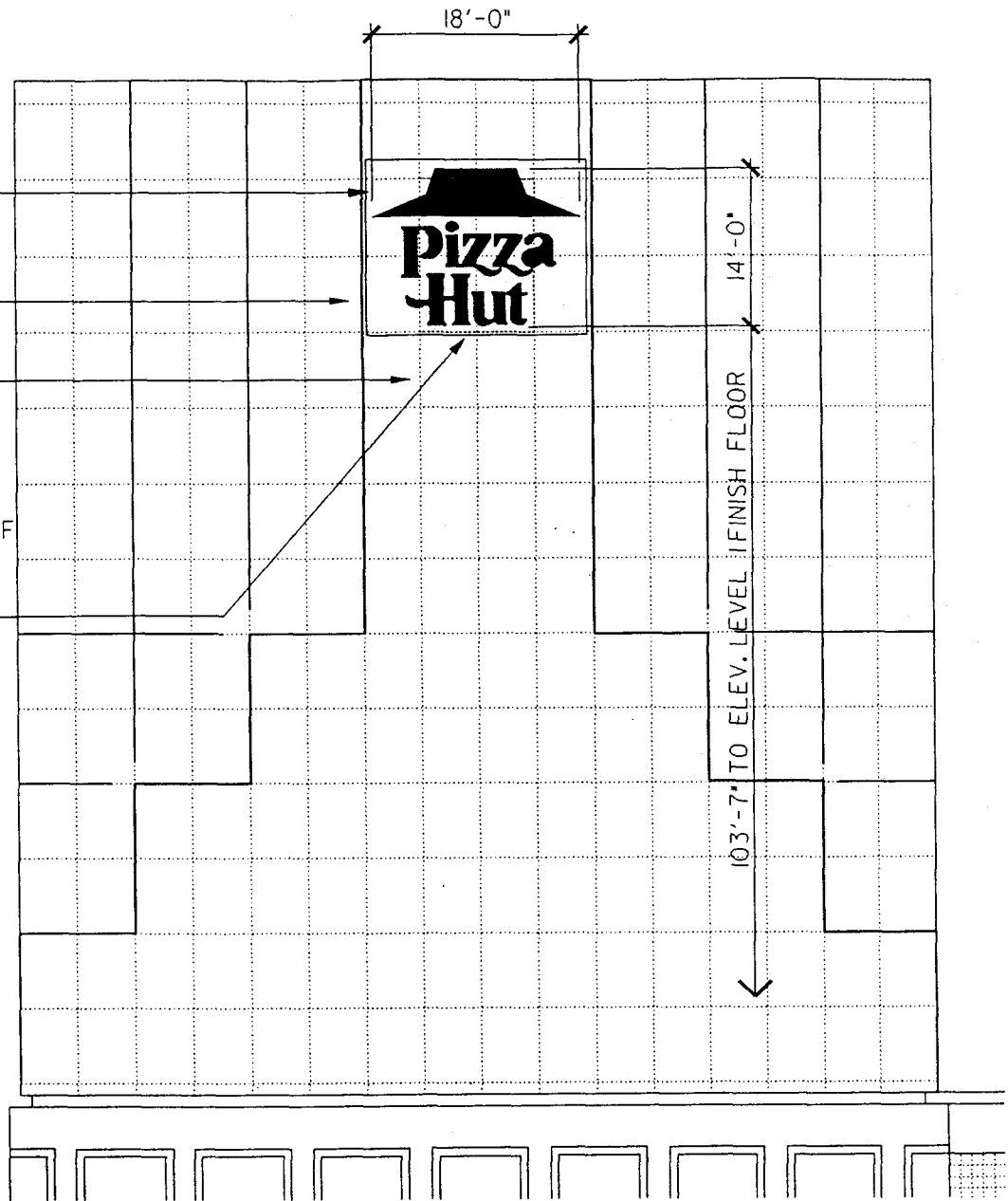
095-048

19'-0"W x 15'-0"H  
 TEMPORARY BANNER.  
 REQUESTED DURATION:  
 9.26.95 TO 12.15.95.

TYPICAL SPANDREL PANEL  
 6'-8" HIGH x 5'-0" WIDE

TYPICAL VISION PANEL  
 6'-6" HIGH x 5'-0" WIDE

18'-0"W x 14'-0"H = 252 SF  
 OVERALL GRAPHIC AREA.  
 HEIGHT OF LARGEST  
 LETTER ("H"): 4'-8".



NORTH ELEV.  
 BUILDING SIGN

1

1/16" = 1'-0"

095-048

