

ORDINANCE NO. 098-031

AN ORDINANCE OF THE TOWN OF ADDISON, TEXAS, AMENDING CHAPTER 14, SIGNS, OF THE CODE OF ORDINANCES, SO AS TO GRANT A MERITORIOUS EXCEPTION TO THE CITY'S SIGN ORDINANCE TO ALLOW FOR ON ATTACHED SIGN WITH LETTERS TALLER THAN ALLOWED BY ORDINANCE, ON APPLICATION WITH AMERISERVE AND MEPC PROPERTIES (THE COLONNADE), LOCATED AT 15305 DALLAS PARKWAY, PROVIDING FOR A REPEAL CLAUSE; PROVIDING FOR A PENALTY CLAUSE; AND PROVIDING FOR A SEVERABILITY CLAUSE.

BE IT ORDAINED BY THE CITY COUNCIL OF THE TOWN OF ADDISON, TEXAS:


SECTION 1. In accordance with Section 14-118 of the Sign Ordinance a meritorious exception is hereby granted to AmeriServe, a tenant in the Colonnade office building, Phase III, located at 15305 Dallas Parkway, to allow an attached sign with three letters which are seven feet (7') in height, in accordance with the drawings attached hereto and made a part hereof for all purposes.

SECTION 2. That all ordinances of the City in conflict with the provisions of this ordinance be, and the same are hereby repealed and all other ordinances of the City not in conflict with the provisions of this ordinance shall remain in full force and effect.

SECTION 3. That any person, firm, or corporation violating any of the provisions or terms of this ordinance shall be subject to a fine not to exceed the sum of Two Hundred Dollars (\$200.00) for each offense and that each day such violation shall continue to exist shall constitute a separate offense.

SECTION 4. That should any paragraph, sentence, subdivision, clause, phrase or section of this ordinance be adjudged or held to be unconstitutional, illegal or invalid, the same shall not affect the validity of this ordinance as a whole or any part or provisions thereof other than the part so decided to be invalid, illegal or unconstitutional, and shall not affect the validity of this ordinance as a whole.

DULY PASSED BY THE CITY COUNCIL OF THE TOWN OF ADDISON,
TEXAS, on this the 14th day of July, 1998.



MAYOR

ATTEST:



CITY SECRETARY

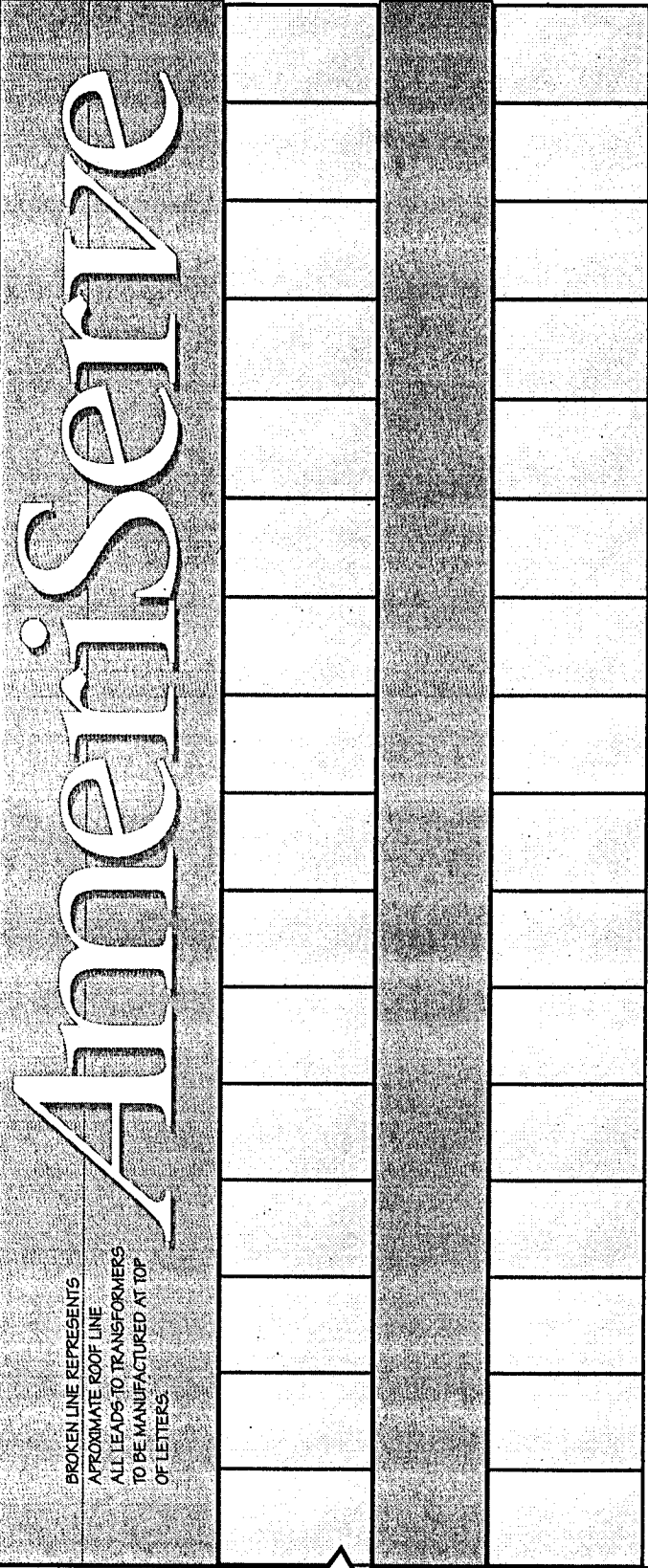
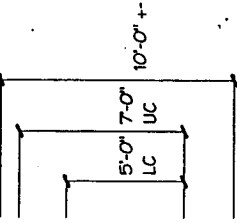
CASE NO. 98-03

APPROVED AS TO FORM:



CODE INSPECTOR

PUBLISHED ON: 9/18/98



BROKEN LINE REPRESENTS
APPROXIMATE ROOF LINE
ALL LEADS TO TRANSFORMERS
TO BE MANUFACTURED AT TOP
OF LETTERS.

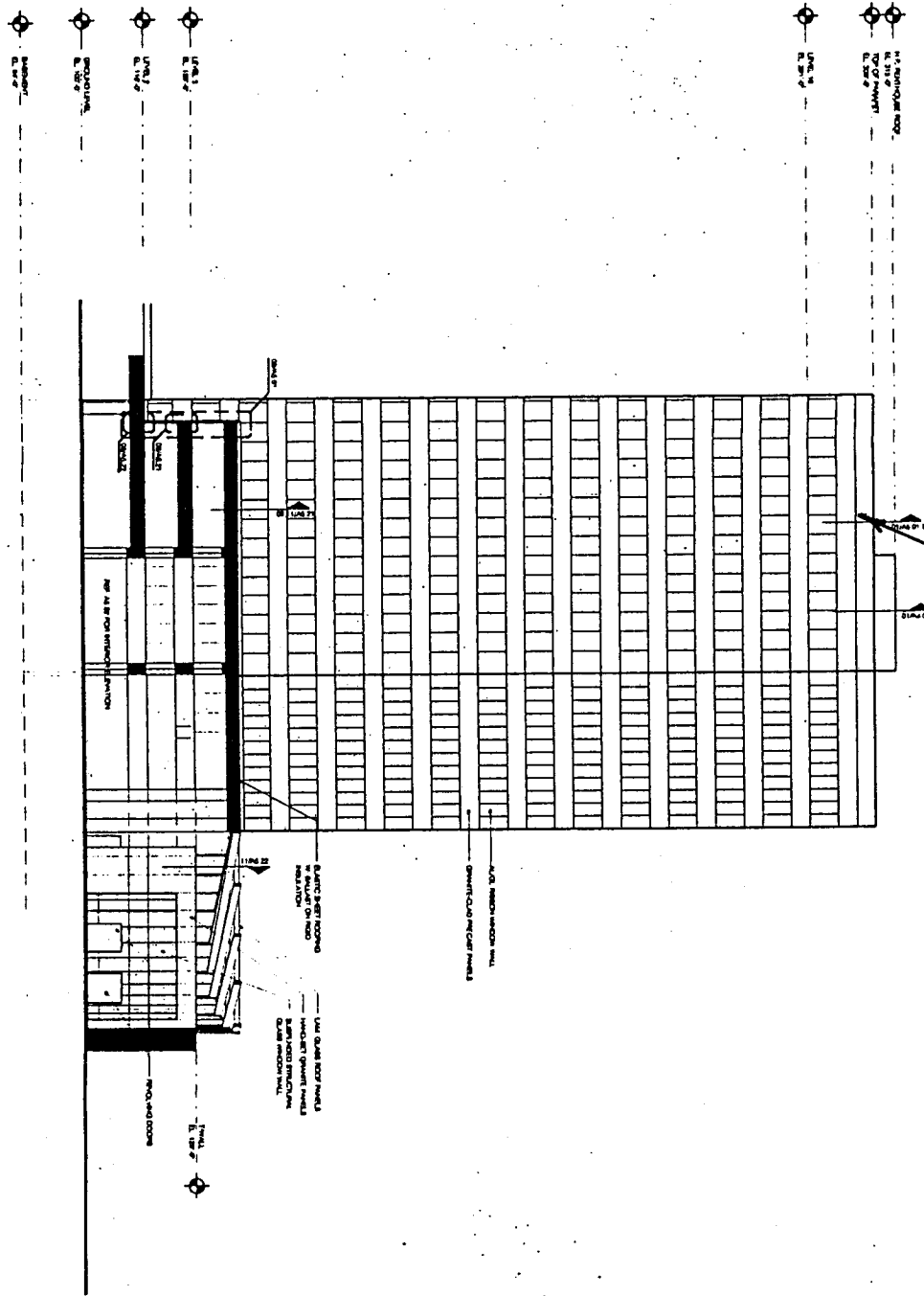
(A) DISPLAY ELEVATION
MANUFACTURE AND INSTALL TWO SETS OF ALUMINUM PLEXIGLAS FACE CHANNEL LETTERS WITH
732B WHITE PLEXIGLAS FACES, RETAINERS, RETURNS, & BACKS TO BE WHITE. INTERNAL WHITE NEON
ILLUMINATION AS REQUIRED PER ENGINEERING SPECIFICATIONS.



This is an approved, published, identified, submitted, approved, with a contract, and
permitted to you. It is not to be copied, reproduced, or used for any other purpose
without the permission of Federal Signal Corporation.

Quantity: 1
Location: COLLEGE ST. DALLAS TEXAS
Designer: SEN LAMTEL
Date: 22 JUNE 88
Design Number: 9825021
Drawing: JAL/DCS

REAR CLADDING PRESSURE ZONES, PAGES 27, 28, 29, 30, 31, 32, 33, 34, 35, 36, 37, 38, 39, 40, 41, 42, 43, 44, 45, 46, 47, 48, 49, 50, 51, 52, 53, 54, 55, 56, 57, 58, 59, 60, 61, 62, 63, 64, 65, 66, 67, 68, 69, 70, 71, 72, 73, 74, 75, 76, 77, 78, 79, 80, 81, 82, 83, 84, 85, 86, 87, 88, 89, 90, 91, 92, 93, 94, 95, 96, 97, 98, 99, 100



Sign Location

01 SOUTH ELEVATION
SCALE 1/8" = 1'-0"

Haldem

ORDINANCE NO. 098-031

OFFICE OF THE CITY SECRETARY

PROJECT NAME
HALEMAN POWER PARTNERS
 BUILDING/POWER PLANT SITE #1
 DALLAS, TEXAS 75241
 (972) 761-0000
BROOKHILL DAVIS DRAKE INC.
 4144 F. ORNELL DENNIS AVE., SUITE 1100
 DALLAS, TEXAS 75244
RAYMOND L. GOODSON, JR., INC.
 3404 L. BIRDA
 DALLAS, TEXAS 75241-1110
 (214) 751-4110
JAMES JOHNSTON & ASSOCIATES, I
 7711 W. HANDELL AVE., SUITE 1000 D 11
 DALLAS, TEXAS 75248
MESA DESIGN
 3100 W. CAMPBELL SUITE 600
 DALLAS, TEXAS 75243
 (214) 971-0266

OWNER
MEPC AMERICAN PROPERTIES, INC.
 1000 DALLAS PARKWAY
 SUITE 500 D 10
 DALLAS, TX 75248
THE COLONNIDE
 TOWER III
 APPROX. AND DALLAS PARKWAY
 DALLAS, TEXAS
 PROJECT NUMBER: 6004-10001-100

DESIGNER
 H. J. BROWN, ARCHITECTS, INC.
 2100 W. CAMPBELL, SUITE 1000
 DALLAS, TEXAS 75243
 (214) 971-0266

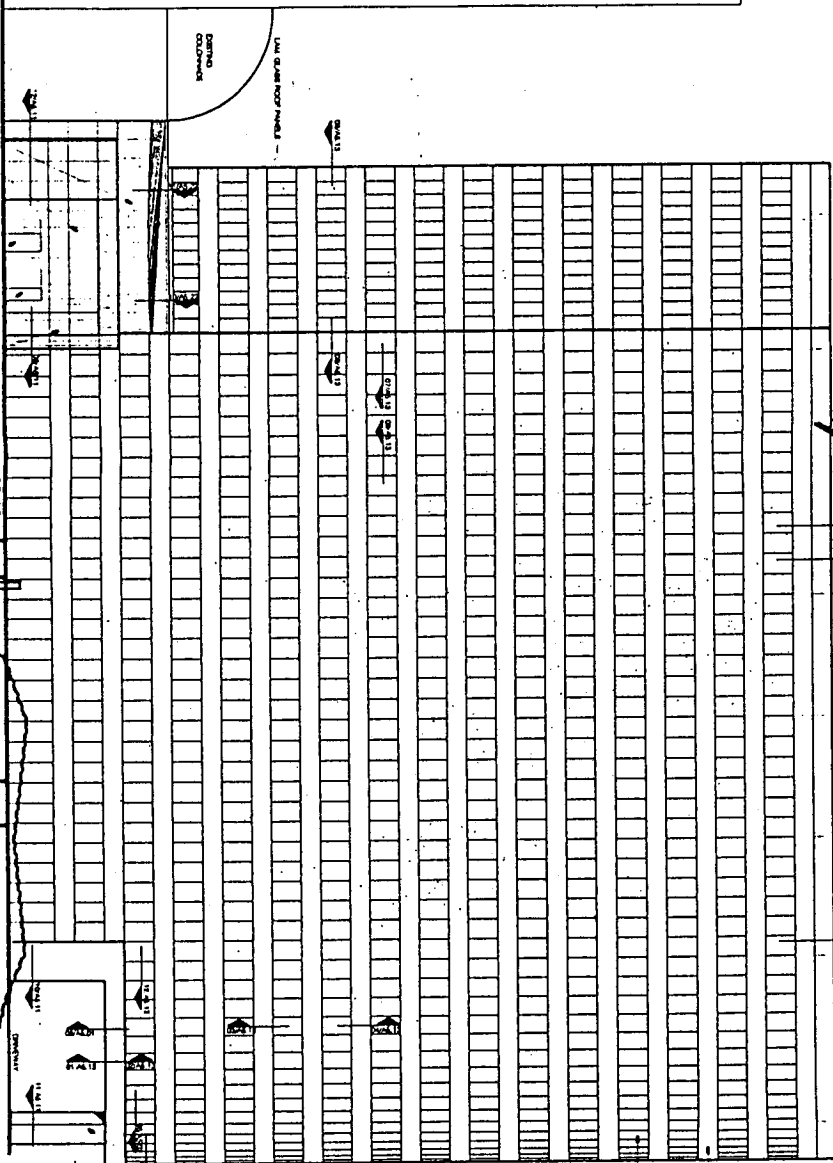
DATE: 23 MAY 1997
A4.02
 EXTERIOR ELEVATION

U3 SCALE 1/8" = 1'-0"

U2 SCALE 1/8" = 1'-0"

MAIN LOCATION

- 1
- 2
- 3
- 4
- 5
- 6
- 7
- 8
- 9
- 10
- 11
- 12
- 13
- 14
- 15
- 16
- 17
- 18
- 19
- 20
- 21
- 22
- 23
- 24
- 25
- 26
- 27
- 28
- 29
- 30
- 31
- 32
- 33
- 34
- 35
- 36
- 37
- 38
- 39
- 40
- 41
- 42
- 43
- 44
- 45
- 46
- 47
- 48
- 49
- 50
- 51
- 52
- 53
- 54
- 55
- 56
- 57
- 58
- 59
- 60
- 61
- 62
- 63
- 64
- 65
- 66
- 67
- 68
- 69
- 70
- 71
- 72
- 73
- 74
- 75
- 76
- 77
- 78
- 79
- 80
- 81
- 82
- 83
- 84
- 85
- 86
- 87
- 88
- 89
- 90
- 91
- 92
- 93
- 94
- 95
- 96
- 97
- 98
- 99
- 100



01 SCALE 1/8" = 1'-0"

A4.03

Haldem

ORDINANCE NO. 098-031

OFFICE OF THE CITY SECRETARY

PROJECT NAME
HALDEMAN PORTER & PARTNERS
 1300 BULLSTOCKYER BL. SUITE 500
 DALLAS, TEXAS 75244

ARCHITECT
BROCKETTE DAVIS DRAKE INC.
 1100 N. CENTRAL EXPRESSWAY, SUITE 1100
 DALLAS, TEXAS 75208

OWNER
RAYMOND L. GOODSON, JR., INC.
 5400 LBJ FREEWAY
 DALLAS, TEXAS 75244

GENERAL CONTRACTOR
JAMES JOHNSON & ASSOCIATES, INC.
 2711 W. BIRKBECK BL. SUITE 1300 L3
 DALLAS, TEXAS 75244

MECHA. ENGINEER
MESA DESIGN
 1100 W. HEDDOWAY SUITE 200
 DALLAS, TEXAS 75244

CLIENT
MERC AMERICAN PROPERTIES, INC.
 5300 DALLAS PARKWAY
 SUITE 300 L3
 DALLAS, TX 75244

PROJECT NUMBER
5002150041.00

THE COLONNIALE
 TOWER III
 APPROX. AND DALLAS PARKWAY
 DALLAS, TEXAS

DATE
 01/20/03

REVISIONS

NO. DATE DESCRIPTION

1. 2/20/03 CONSTRUCTION

2. 3/24/03 REVISIONS

3. 4/24/03 REVISIONS

4. 5/24/03 REVISIONS

5. 6/24/03 REVISIONS

6. 7/24/03 REVISIONS

7. 8/24/03 REVISIONS

8. 9/24/03 REVISIONS

9. 10/24/03 REVISIONS

10. 11/24/03 REVISIONS

11. 12/24/03 REVISIONS

12. 1/24/04 REVISIONS

13. 2/24/04 REVISIONS

14. 3/24/04 REVISIONS

15. 4/24/04 REVISIONS

16. 5/24/04 REVISIONS

17. 6/24/04 REVISIONS

18. 7/24/04 REVISIONS

19. 8/24/04 REVISIONS

20. 9/24/04 REVISIONS

21. 10/24/04 REVISIONS

22. 11/24/04 REVISIONS

23. 12/24/04 REVISIONS

24. 1/24/05 REVISIONS

25. 2/24/05 REVISIONS

26. 3/24/05 REVISIONS

27. 4/24/05 REVISIONS

28. 5/24/05 REVISIONS

29. 6/24/05 REVISIONS

30. 7/24/05 REVISIONS

31. 8/24/05 REVISIONS

32. 9/24/05 REVISIONS

33. 10/24/05 REVISIONS

34. 11/24/05 REVISIONS

35. 12/24/05 REVISIONS

36. 1/24/06 REVISIONS

37. 2/24/06 REVISIONS

38. 3/24/06 REVISIONS

39. 4/24/06 REVISIONS

40. 5/24/06 REVISIONS

41. 6/24/06 REVISIONS

42. 7/24/06 REVISIONS

43. 8/24/06 REVISIONS

44. 9/24/06 REVISIONS

45. 10/24/06 REVISIONS

46. 11/24/06 REVISIONS

47. 12/24/06 REVISIONS

48. 1/24/07 REVISIONS

49. 2/24/07 REVISIONS

50. 3/24/07 REVISIONS

51. 4/24/07 REVISIONS

52. 5/24/07 REVISIONS

53. 6/24/07 REVISIONS

54. 7/24/07 REVISIONS

55. 8/24/07 REVISIONS

56. 9/24/07 REVISIONS

57. 10/24/07 REVISIONS

58. 11/24/07 REVISIONS

59. 12/24/07 REVISIONS

60. 1/24/08 REVISIONS

61. 2/24/08 REVISIONS

62. 3/24/08 REVISIONS

63. 4/24/08 REVISIONS

64. 5/24/08 REVISIONS

65. 6/24/08 REVISIONS

66. 7/24/08 REVISIONS

67. 8/24/08 REVISIONS

68. 9/24/08 REVISIONS

69. 10/24/08 REVISIONS

70. 11/24/08 REVISIONS

71. 12/24/08 REVISIONS

72. 1/24/09 REVISIONS

73. 2/24/09 REVISIONS

74. 3/24/09 REVISIONS

75. 4/24/09 REVISIONS

76. 5/24/09 REVISIONS

77. 6/24/09 REVISIONS

78. 7/24/09 REVISIONS

79. 8/24/09 REVISIONS

80. 9/24/09 REVISIONS

81. 10/24/09 REVISIONS

82. 11/24/09 REVISIONS

83. 12/24/09 REVISIONS

84. 1/24/10 REVISIONS

85. 2/24/10 REVISIONS

86. 3/24/10 REVISIONS

87. 4/24/10 REVISIONS

88. 5/24/10 REVISIONS

89. 6/24/10 REVISIONS

90. 7/24/10 REVISIONS

91. 8/24/10 REVISIONS

92. 9/24/10 REVISIONS

93. 10/24/10 REVISIONS

94. 11/24/10 REVISIONS

95. 12/24/10 REVISIONS

96. 1/24/11 REVISIONS

97. 2/24/11 REVISIONS

98. 3/24/11 REVISIONS

99. 4/24/11 REVISIONS

100. 5/24/11 REVISIONS

EXTERIOR ELEVATION

EXHIBIT A

AMERISERVE SIGNAGE PER CODE RESTRICTIONS - 8'-0" / 4'-3"

