

**ORDINANCE NO. 005-040**

AN ORDINANCE OF THE TOWN OF ADDISON, TEXAS, AMENDING CHAPTER 62, SIGNS, OF THE CODE OF ORDINANCES, SO AS TO GRANT A MERITORIOUS EXCEPTION TO THE CITY'S SIGN ORDINANCE TO ALLOW AN ADDITIONAL SIGN ON THE SOUTH FAÇADE WITH LETTERS 10' IN HEIGHT, A LOGO 42' IN HEIGHT AND AN AREA OF 8,649 SQUARE FEET TO BE DISPLAYED FOR 60 DAYS, ON APPLICATION WITH WACHOVIA BANK, LOCATED AT 5080 SPECTRUM DRIVE, PROVIDING FOR A REPEAL CLAUSE; PROVIDING FOR A PENALTY CLAUSE; AND PROVIDING FOR A SEVERABILITY CLAUSE.

BE IT ORDAINED BY THE CITY COUNCIL OF THE TOWN OF ADDISON, TEXAS:

SECTION 1. In accordance with Chapter 62 – 162, Premises sign and Sec. 62-163, Area of the Sign Ordinance a meritorious exception is hereby granted to Wachovia Bank, located at 5080 Spectrum Drive, to allow an additional sign on the south façade with letters 10' in height and an area of 8,649 square feet to be displayed for 60 days, in accordance with the drawings attached hereto and made a part hereof for all purposes.

SECTION 2. That all ordinances of the City in conflict with the provisions of this ordinance be, and the same are hereby repealed and all other ordinances of the City not in conflict with the provisions of this ordinance shall remain in full force and effect.

SECTION 3. That any person, firm, or corporation violating any of the provisions or terms of this ordinance shall be subject to a fine not to exceed the sum of Two Hundred Dollars (\$200.00) for each offense and that each day such violation shall continue to exist shall constitute a separate offense.

SECTION 4. That should any paragraph, sentence, subdivision, clause, phrase or section of this ordinance be adjudged or held to be unconstitutional, illegal or invalid, the same shall not affect the validity of this ordinance as a whole or any part or provisions thereof other than the part so decided to be invalid, illegal or unconstitutional, and shall not affect the validity of this ordinance as a whole.

DULY PASSED BY THE CITY COUNCIL OF THE TOWN OF ADDISON,  
TEXAS, on this the 13<sup>th</sup> day of September, 2005.

MAYOR 

ATTEST:

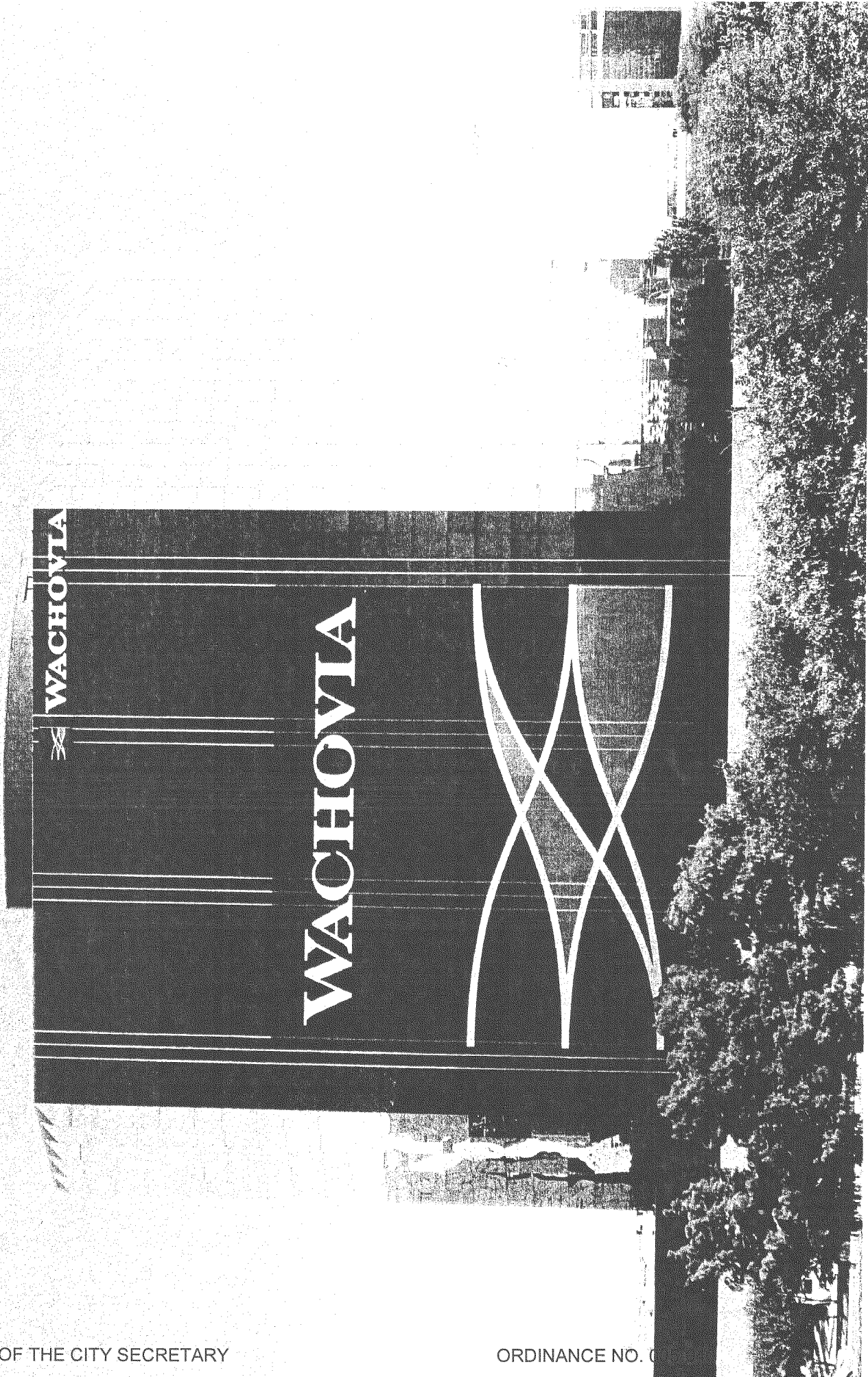
  
CITY SECRETARY

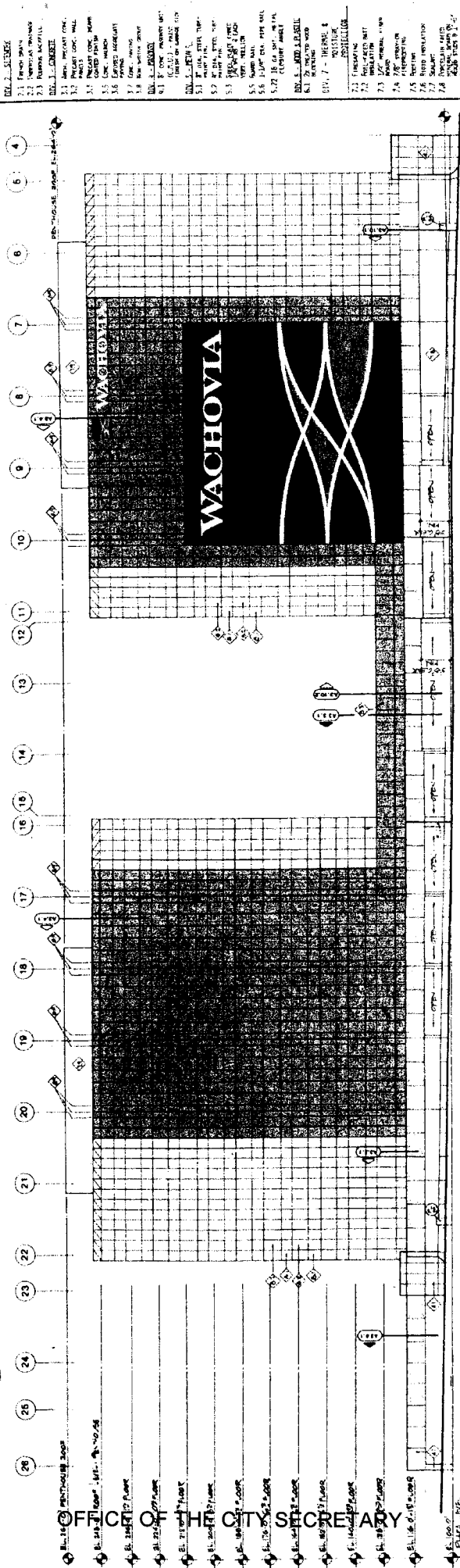
CASE NO. ME-2005-9

APPROVED AS TO FORM:

  
BUILDING OFFICIAL

PUBLISHED ON: 10-13-05





SOUTH ELEVATION

WEST ELEVATION

NOTE  
UNLESS INDICATED OTHERWISE BY THE ARCHITECT  
JOINTLY OWNED

SOUTH AND WEST ELEVATIONS



OFFICE OF THE CITY SECRETARY

ORDINANCE NO. 005-000

- 2.1 FINISH WORK
- 2.2 EXTERIOR WALLS
- 2.3 ROOFING MATERIALS
- 2.4 METAL PANELING
- 2.5 METAL PANELING
- 2.6 METAL PANELING
- 2.7 METAL PANELING
- 2.8 METAL PANELING
- 2.9 METAL PANELING
- 2.10 METAL PANELING
- 2.11 METAL PANELING
- 2.12 METAL PANELING
- 2.13 METAL PANELING
- 2.14 METAL PANELING
- 2.15 METAL PANELING
- 2.16 METAL PANELING
- 2.17 METAL PANELING
- 2.18 METAL PANELING
- 2.19 METAL PANELING
- 2.20 METAL PANELING
- 2.21 METAL PANELING
- 2.22 METAL PANELING
- 2.23 METAL PANELING
- 2.24 METAL PANELING
- 2.25 METAL PANELING
- 2.26 METAL PANELING
- 2.27 METAL PANELING
- 2.28 METAL PANELING
- 2.29 METAL PANELING
- 2.30 METAL PANELING
- 2.31 METAL PANELING
- 2.32 METAL PANELING
- 2.33 METAL PANELING
- 2.34 METAL PANELING
- 2.35 METAL PANELING
- 2.36 METAL PANELING
- 2.37 METAL PANELING
- 2.38 METAL PANELING
- 2.39 METAL PANELING
- 2.40 METAL PANELING
- 2.41 METAL PANELING
- 2.42 METAL PANELING
- 2.43 METAL PANELING
- 2.44 METAL PANELING
- 2.45 METAL PANELING
- 2.46 METAL PANELING
- 2.47 METAL PANELING
- 2.48 METAL PANELING
- 2.49 METAL PANELING
- 2.50 METAL PANELING



**SPECTRUM CENTER**  
2015

**A3.2**

PLAN NO. 8006

GENERAL DEVELOPMENT COMPANY PROJECT

**Wardens Evans Hill**

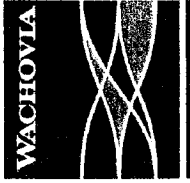
ARCHITECTS

STRUCTURAL  
**BROCKETTE / DAVIS / DRAKE, INC.**  
CONSULTING ENGINEERS

MECHANICAL / ELECTRICAL  
**GAYNOR & SIRHAN, INC.**  
MECHANICAL ENGINEERS

INTERIOR  
**RICHARDS ASSOCIATES, LTD**  
ARCHITECTS

LANDSCAPE  
**MITCHELL NEWMAN DAHLBERG, INC.**  
ARCHITECTS



BOUNDARY SURVEY  
FOR A TRAPEZOIDAL TRACT  
IN THE COUNTY OF DALLAS,  
STATE OF TEXAS



DATUM POINT ELEVATION 638.0' - 100.0'

