

TOWN OF ADDISON

CIVIL CONSTRUCTION PLANS FOR

ADDISON ATHLETIC CLUB

EXPANSION & LEISURE POOL

SHEET INDEX

	<u>SHEET NO.</u>
PLAT	1
PLAT LEGAL DESCRIPTION	1A
DEMOLITION PLAN	2
SITE PLAN LEISURE POOL	3
GRADING PLAN	4
STORM SEWER PLAN	5
PAVING PLAN	6
WATER & SANITARY SEWER PLAN	7
UTILITY PROFILE	7A
EROSION CONTROL PLAN	8
TENNIS COURT ALT. # 5	9
PARKING EXPANSION ALT. # 3	10
CONSTRUCTION DETAILS	11



MAYOR

R. SCOTT WHEELER

CITY COUNCIL

DIANE MALLORY	GLYNDA TURNER	FREDRIC M. SILVER
CATHY WAYS	BOB BARRETT	FRANK R. KLEIN

CITY MANAGER

RON WHITEHEAD

CITY ENGINEER

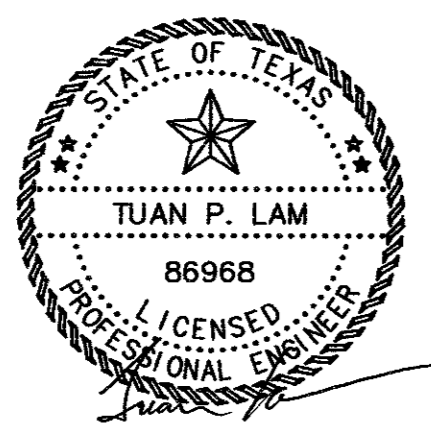
MICHAEL E. MURPHY P.E.

OWNER:

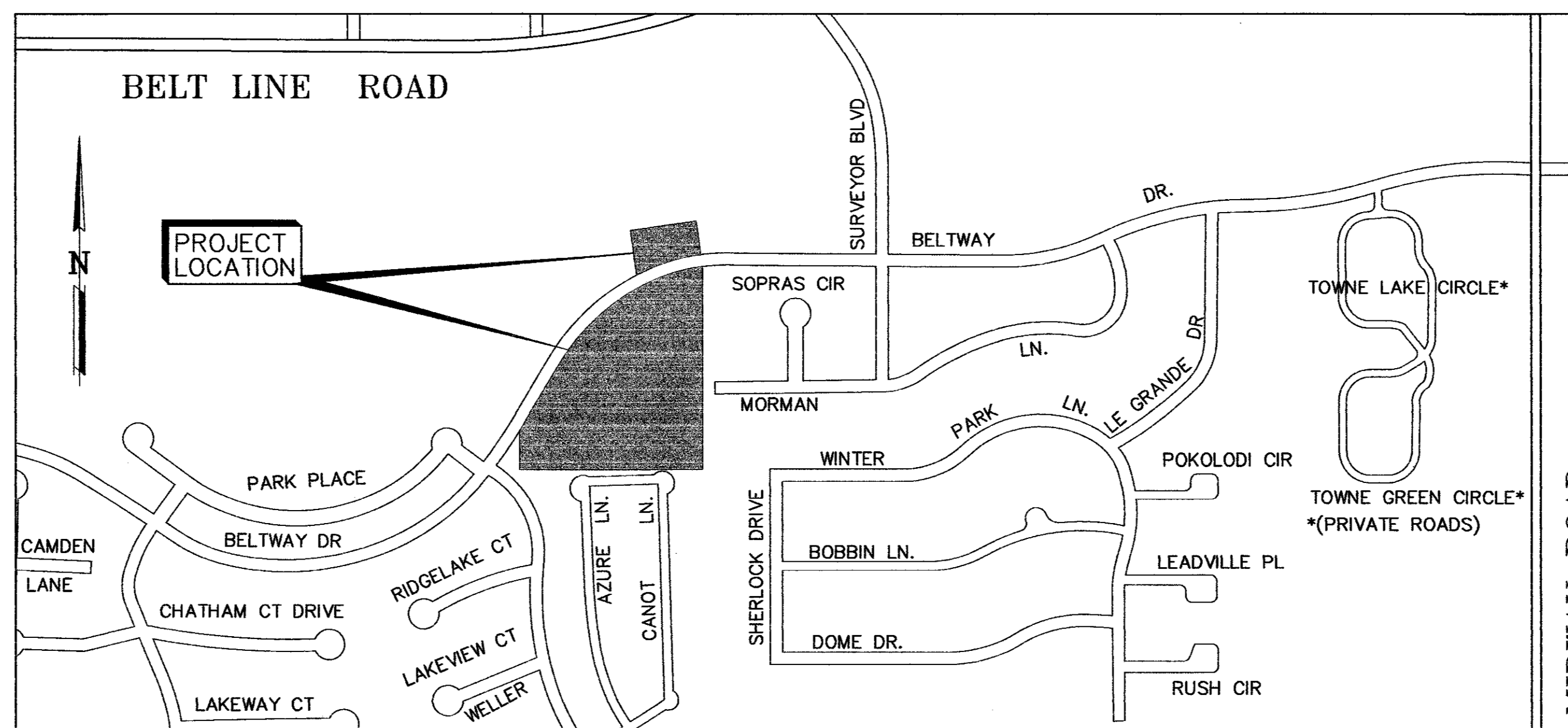
TOWN OF ADDISON
3900 BELTWAY DRIVE
ADDISON, TX 75001

ENGINEER :

R-DELTA ENGINEERS, INC.
618 MAIN STREET
GARLAND, TX. 75040
PHONE: (972) 494-5031
www.rdelta.com



THE SEAL APPEARING ON THIS DOCUMENT WAS AUTHORIZED BY TUAN P. LAM, P.E. 86968 ON 02-20-02. ALTERATION OF A SEALED DOCUMENT WITHOUT THE PROPER NOTIFICATION TO THE RESPONSIBLE ENGINEER IS AN OFFENSE UNDER THE TEXAS ENGINEERING PRACTICE ACT.



VICINITY MAP

N.T.S.

MAPSCO 14-A,E

B22-13
 ADDISON ATHLETIC CLUB
 EXPANSION & LEISURE POOL
 ADDISON, TEXAS
 3900 BELTWAY
 R-DELTA ENGINEERS, INC.
 RDE #982-01