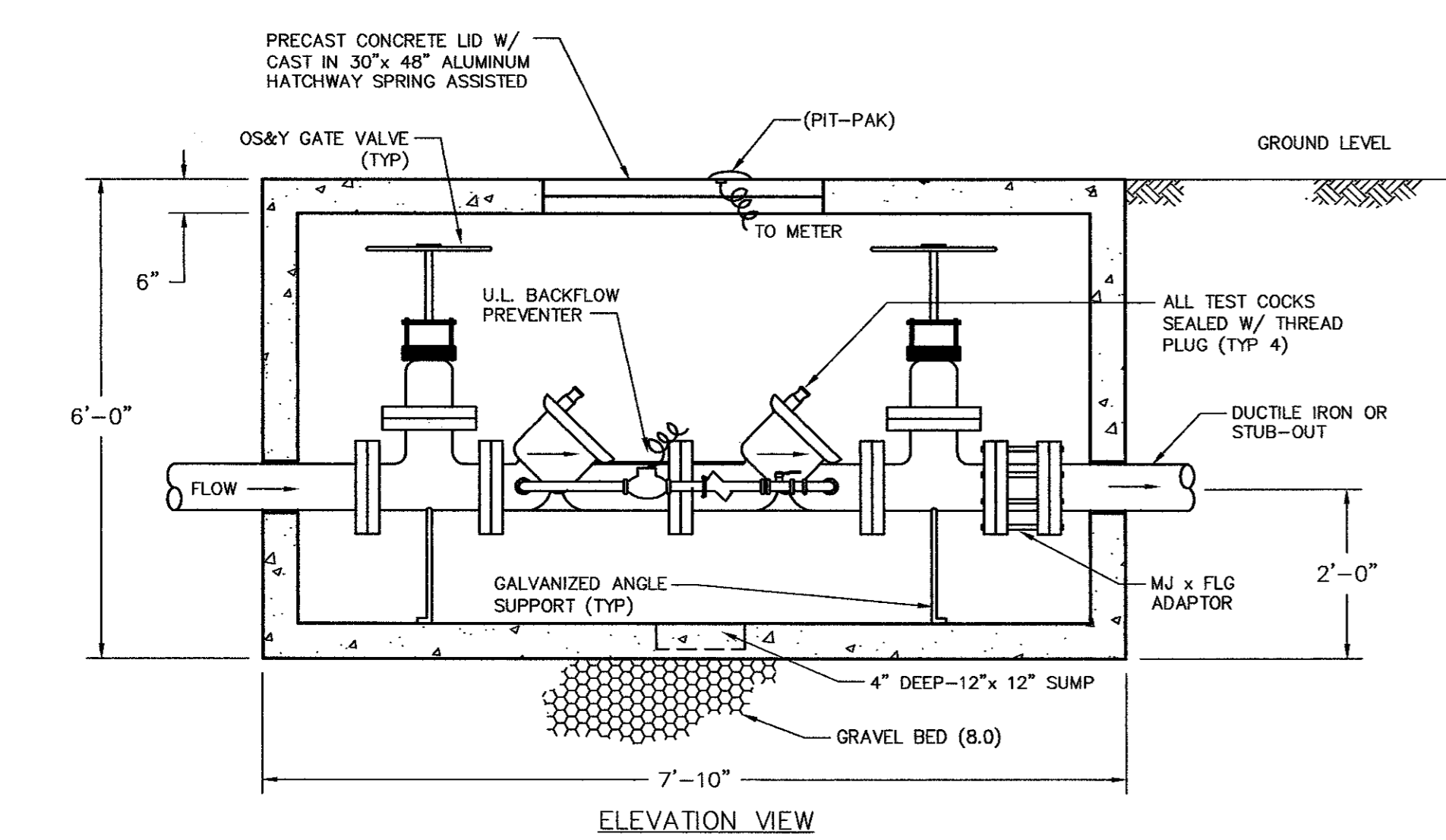
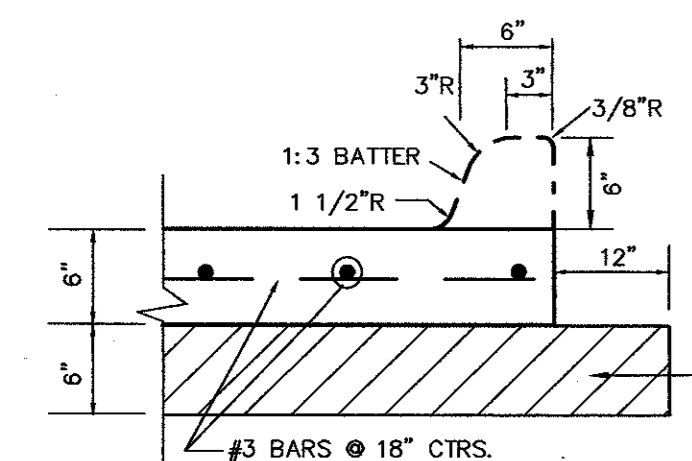


PLAN VIEW

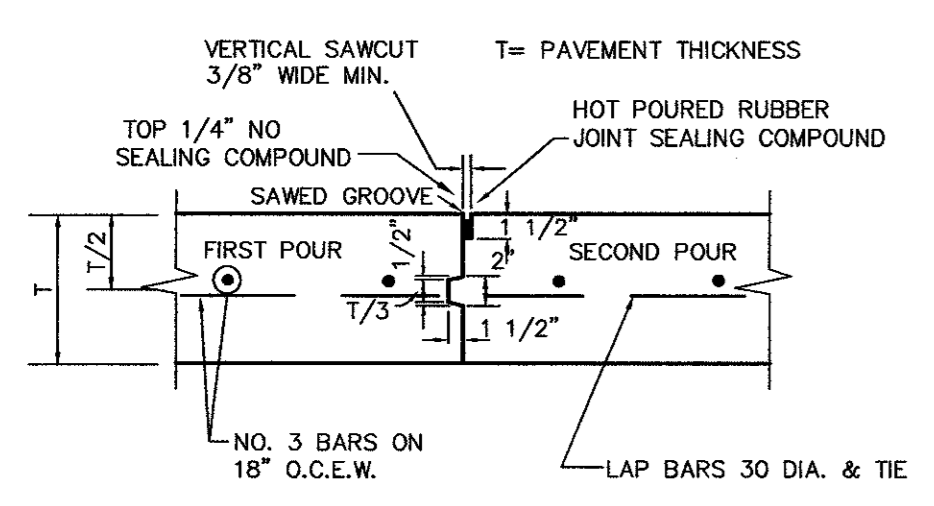


ELEVATION VIEW

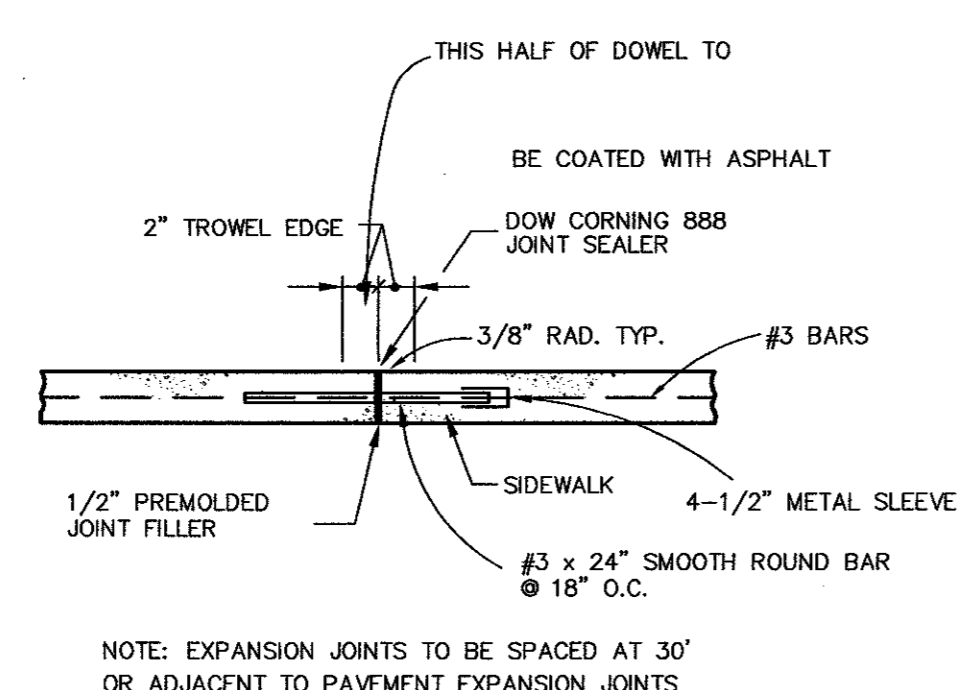
DOUBLE DETECTOR CHECK BACKFLOW PREVENTER ASSEMBLY
N.T.S.



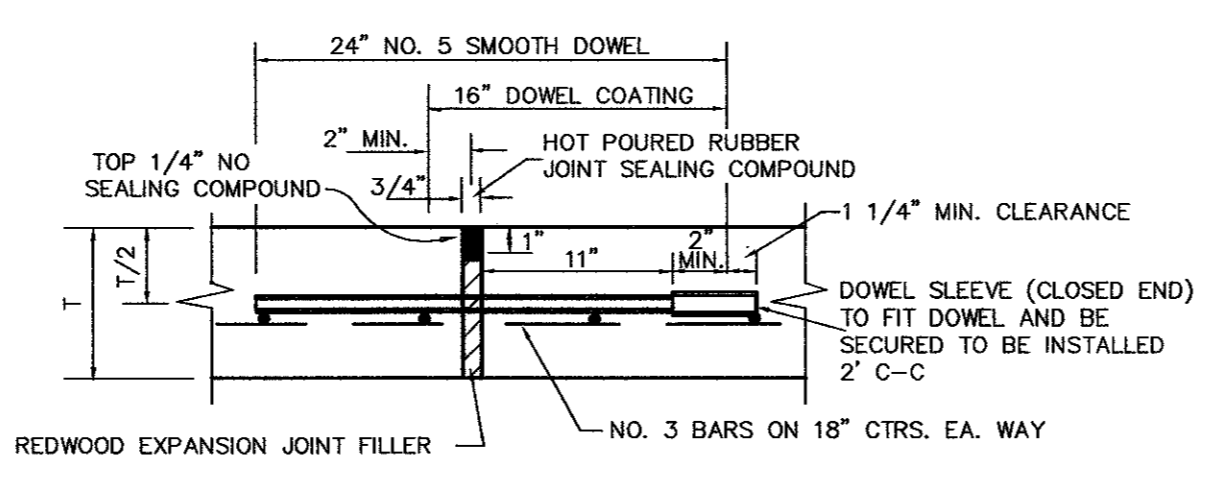
CONCRETE PAVEMENT SECTION
N.T.S.



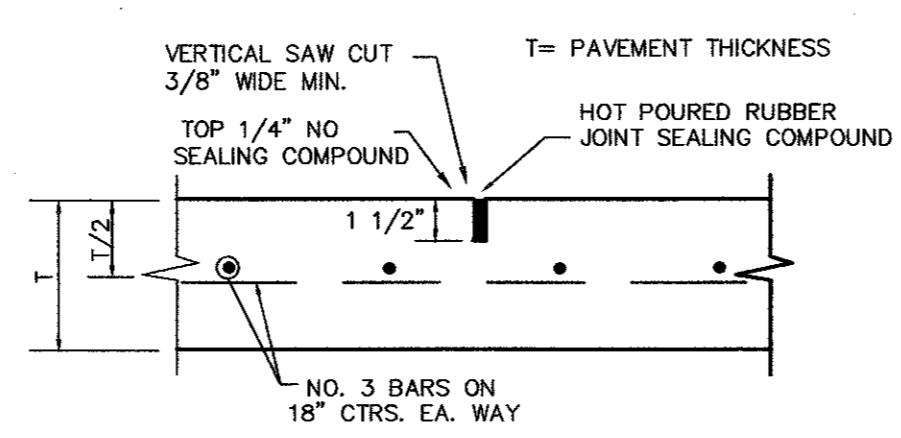
CONSTRUCTION JOINT
N.T.S.



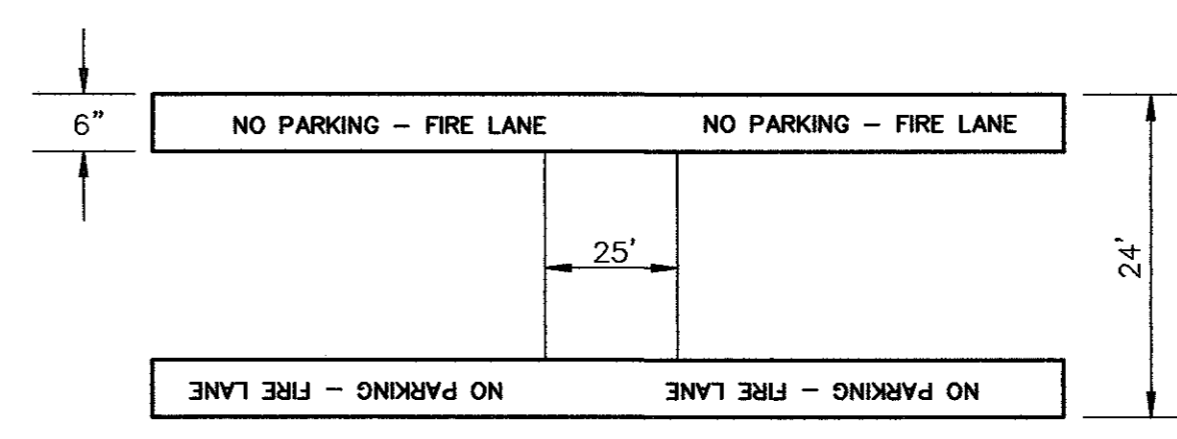
EXPANSION JOINT-SIDEWALK
N.T.S.



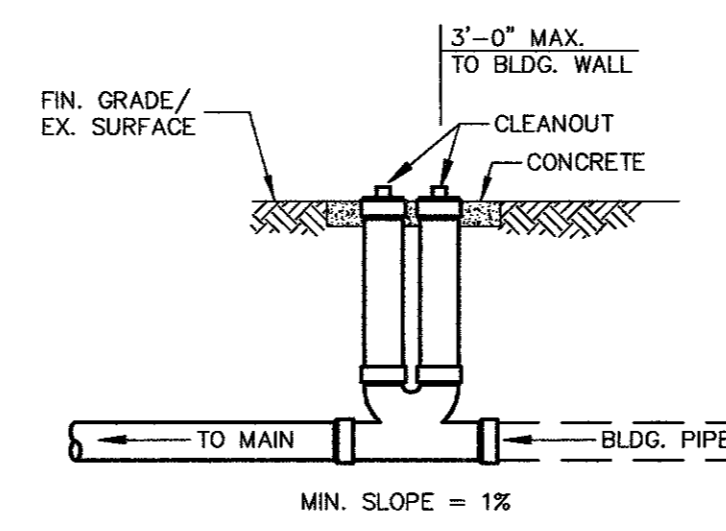
EXPANSION JOINT
N.T.S. LOCATED AS INDICATED.



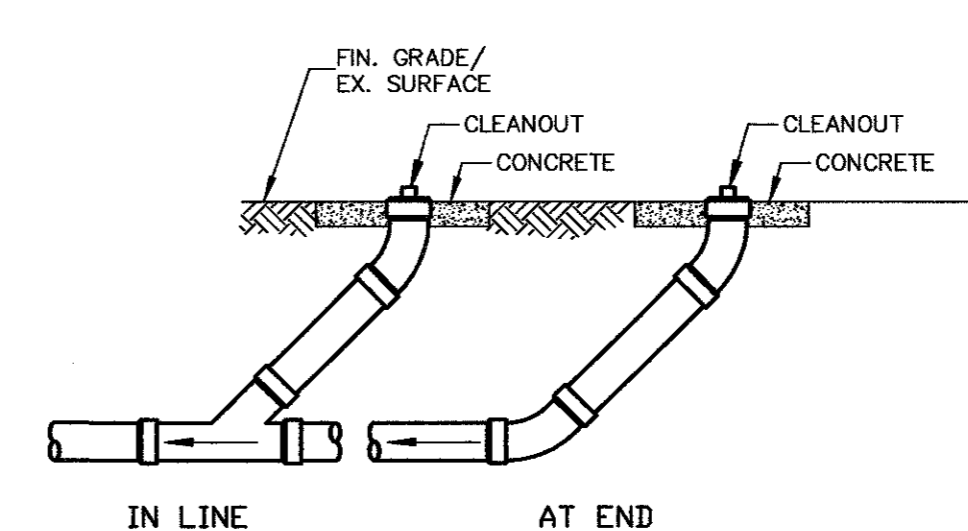
SAWED DUMMY (CONTROL) JOINT
N.T.S. MAXIMUM SPACING IS 20' CTRS. (TYP.)



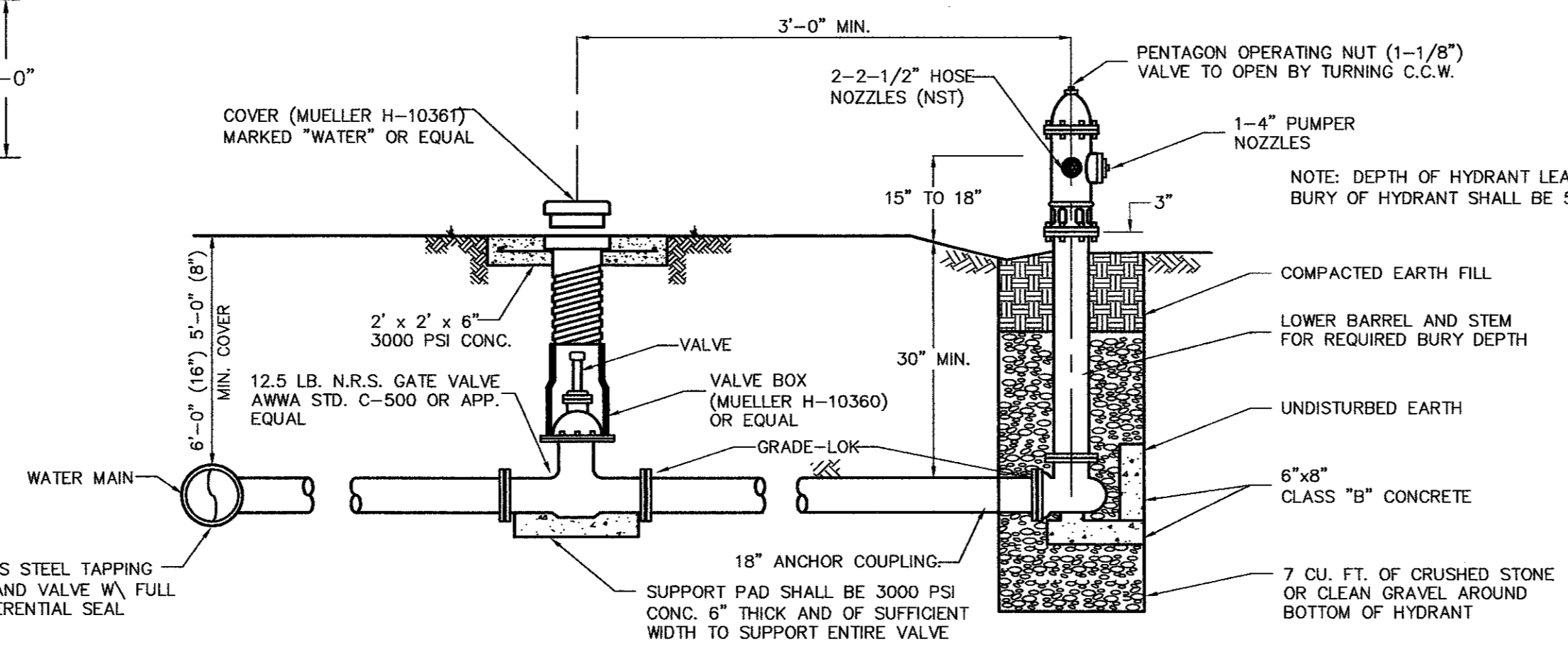
FIRE LANE PAVEMENT MARKING DETAIL
N.T.S.



DOUBLE CLEANOUT
N.T.S.



TYPICAL CLEANOUT
N.T.S.

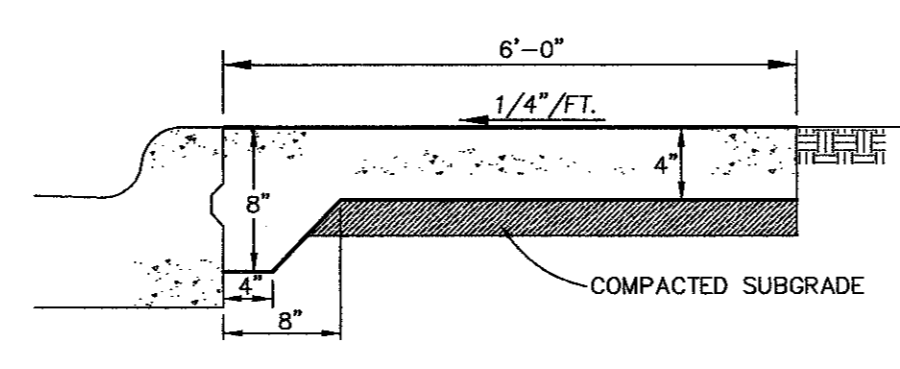


VALVE BOX DETAIL
N.T.S.

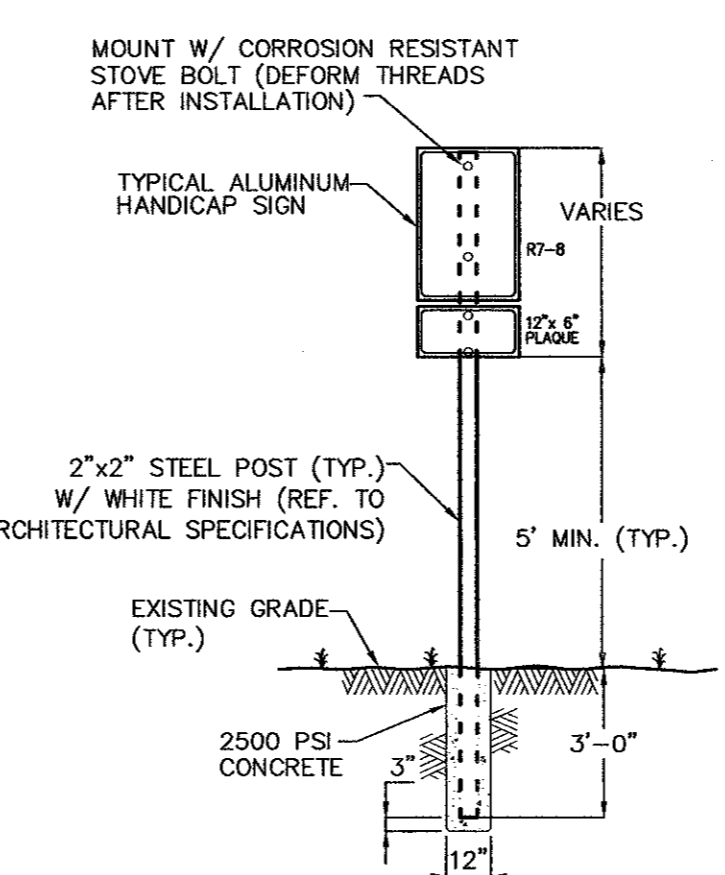
FIRE HYDRANT INSTALLATION
N.T.S.

NOTE: THE MUELLER \"CENTURION\" OR EQUAL IN GENERAL, ALL FIRE HYDRANTS SHALL CONFORM TO AWWA STANDARD SPECIFICATIONS FOR FIRE HYDRANTS FOR ORDINARY WATER WORKS SERVICE FOR WATER AND SANITARY SEWER IMPROVEMENTS. FIRE HYDRANTS WITH A BARREL APPROXIMATELY 7\"/>

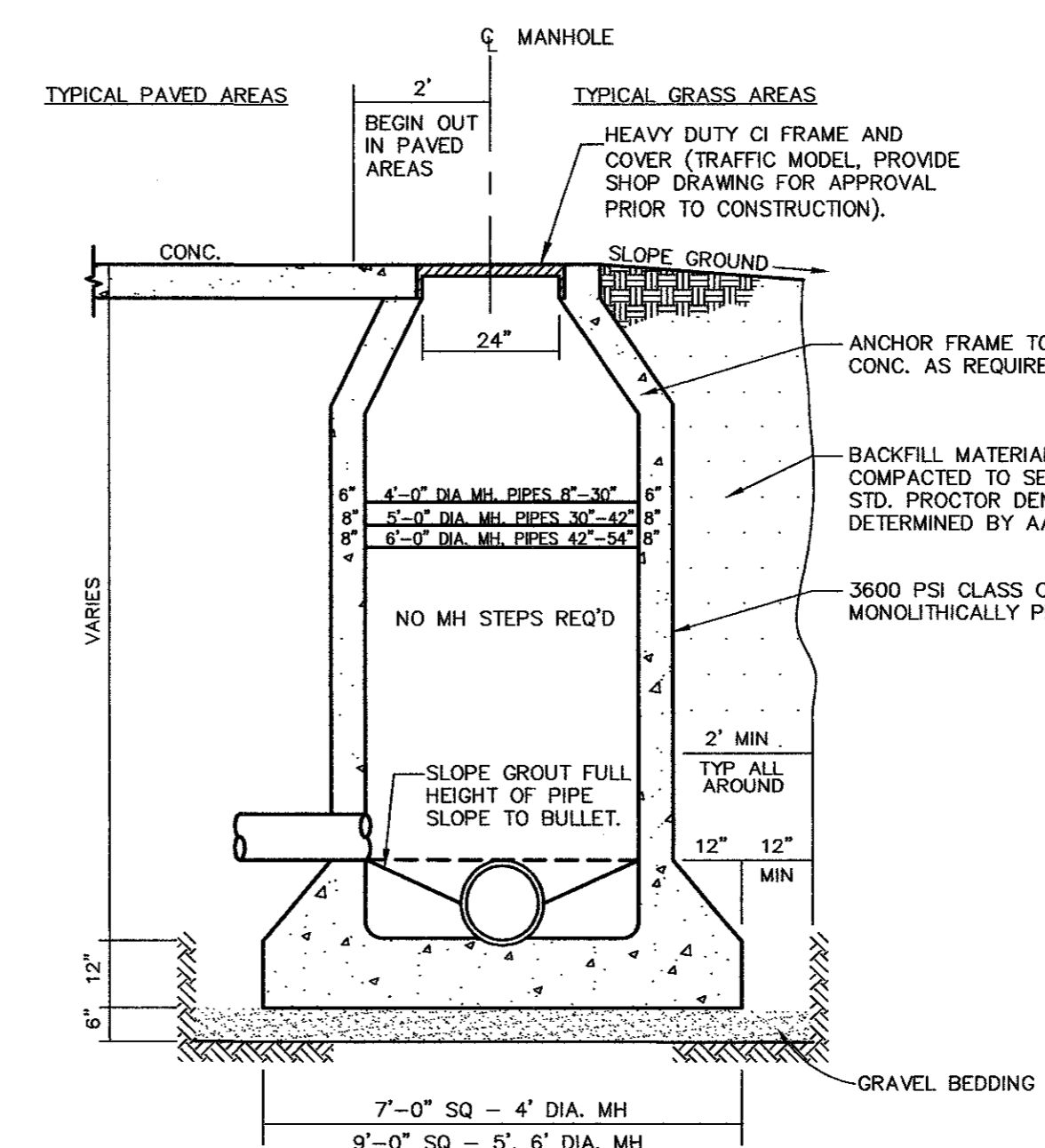
VALVES AND VALVE BOXES: REFERENCE TO SPECIFICATION #GV-95.1
VALVE BOXES SHALL BE CAST IRON AND SHALL BE OF SUFFICIENT LENGTH AND DIAMETER TO OPERATE ALL VALVES BURIED IN THE GROUND. COVERS SHALL BE MARKED \"WATER\" THE BOXES SHALL REST ON THE VALVE AND BE ADJUSTED SO THAT THE COVER MAY BE SET FLUSH WITH THE FINISHED GRADE.



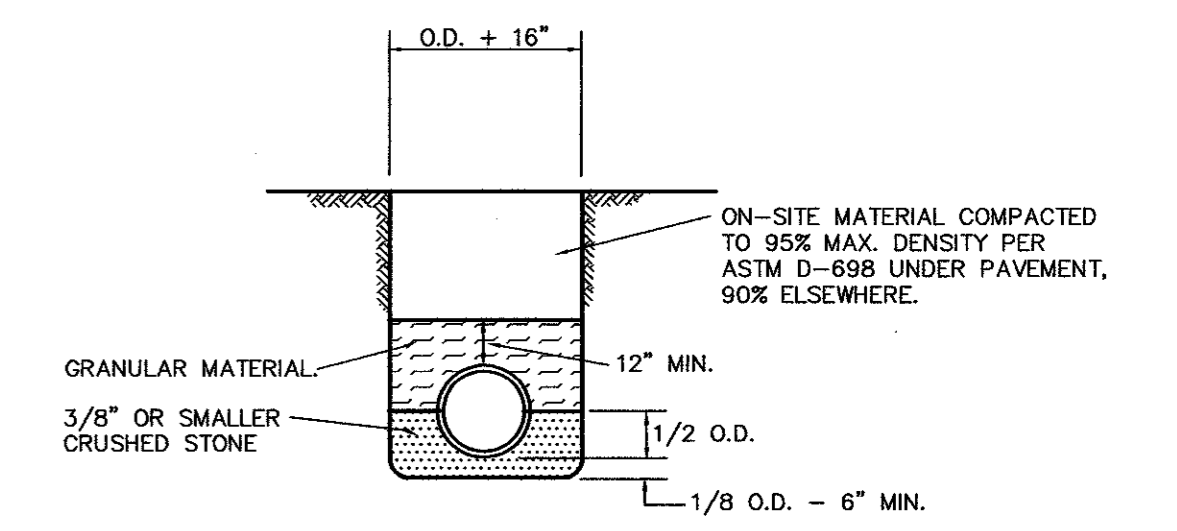
SIDEWALK DETAILS
N.T.S.



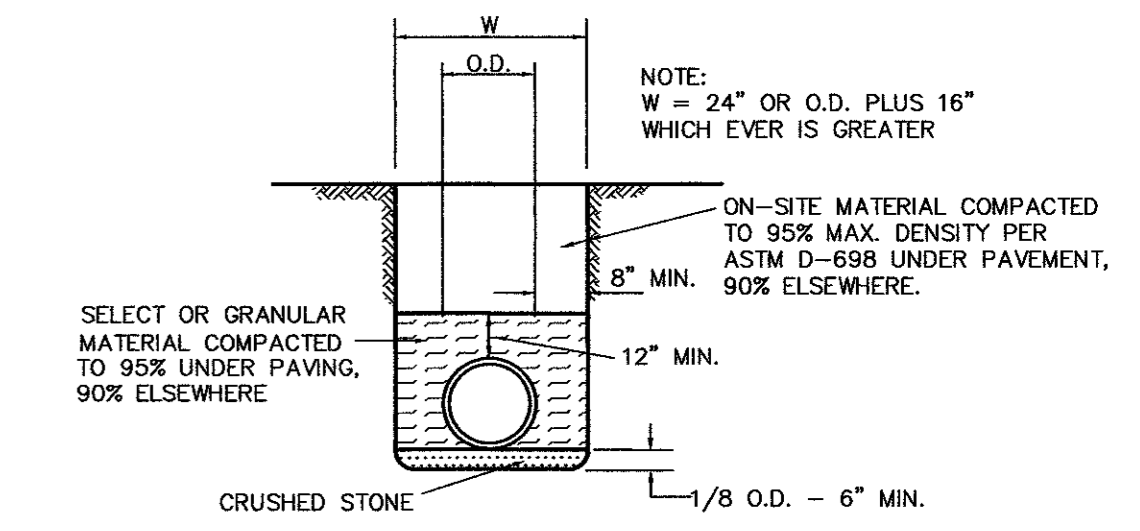
TYPICAL SIGNAGE MOUNTING DETAIL
N.T.S.



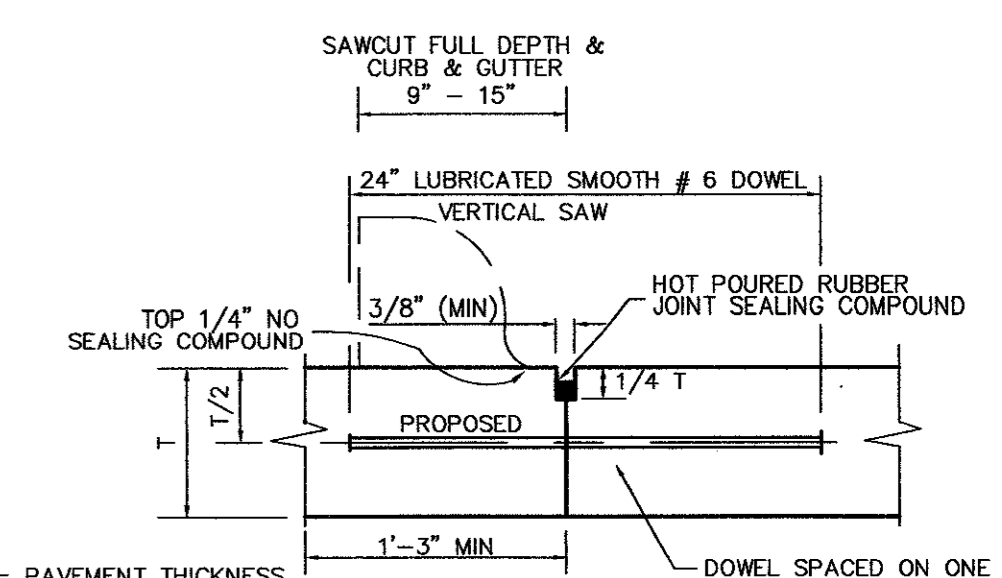
CAST IN PLACE MANHOLE
N.T.S.



STORM AND SANITARY SEWER PIPE EMBEDMENT-PVC AND POLYETHYLENE
N.T.S.

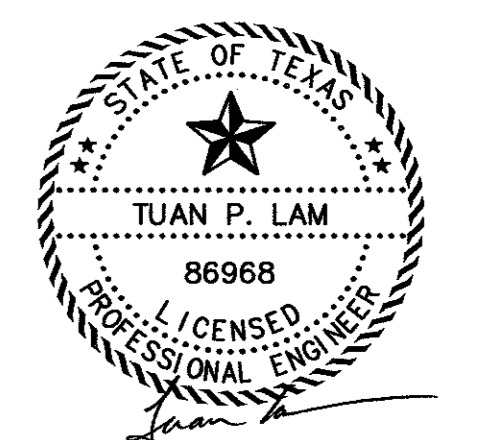


RCP & PVC 6\"/>



LONGITUDINAL BUTT JOINT
N.T.S. LOCATED AS INDICATED.

NOTES:
1. NO. 5 SMOOTH DOWEL BAR MAY BE USED IN 5 INCH AND 6 INCH PAVEMENT THICKNESS.
2. LONGITUDINAL BUTT CONSTRUCTION MAY BE UTILIZED IN PLACE OF LONGITUDINAL HINGED (KEYWAY) JOINT AT CONTRACTORS OPTION.
3. DOWEL BARS SHALL BE DRILLED INTO PAVEMENT HORIZONTALLY BY USE OF A MECHANICAL RIG.
DRILLING BY HAND IS NOT ACCEPTABLE, PUSHING DOWEL BARS INTO GREEN CONCRETE NOT ACCEPTABLE.



THE SEAL APPEARING ON THIS DOCUMENT WAS AUTHORIZED BY TUAN P. LAM, P.E. 86968 ON 02/24/02 ALTERATION OF A SEALED DOCUMENT WITHOUT THE PROPER NOTIFICATION TO THE RESPONSIBLE ENGINEER IS AN OFFENSE UNDER THE TEXAS ENGINEERING PRACTICE ACT.

CONSTRUCTION DETAILS
ADDISON ATHLETIC CLUB EXPANSION & LEISURE POOL
ADDISON, TEXAS

R-DELTA ENGINEERS, INC.
618 MAIN STREET GARLAND, TEXAS 75040
Phone (972) 494-5031 www.rdelta.com

DESIGN: CTL	CHECK: JRP	SCALE: 1"=30'	11 of 11
DRAWN: CEM	DATE: FEBRUARY, 2002	PROJECT: 982-01	