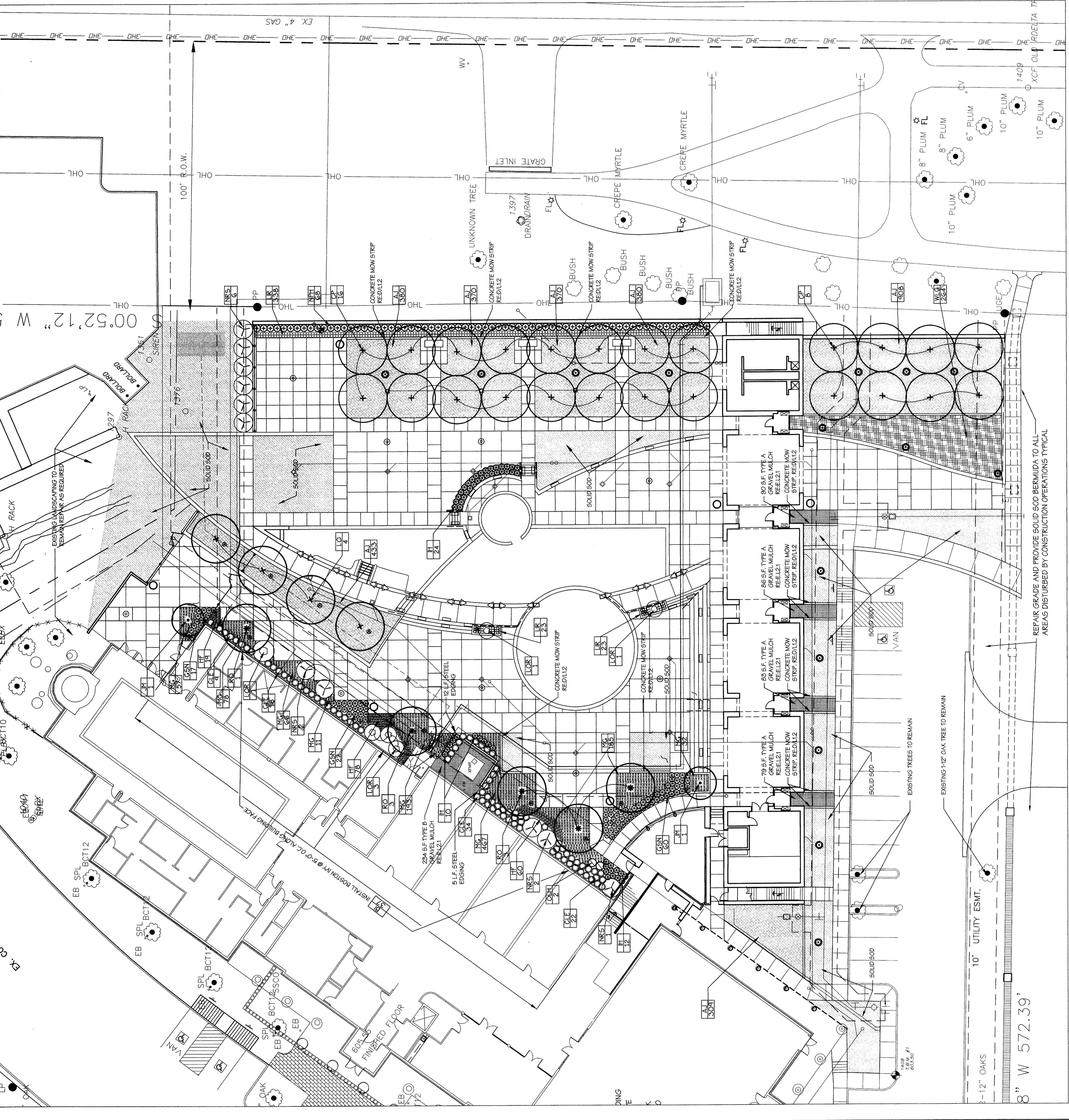


**PLANT LIST**

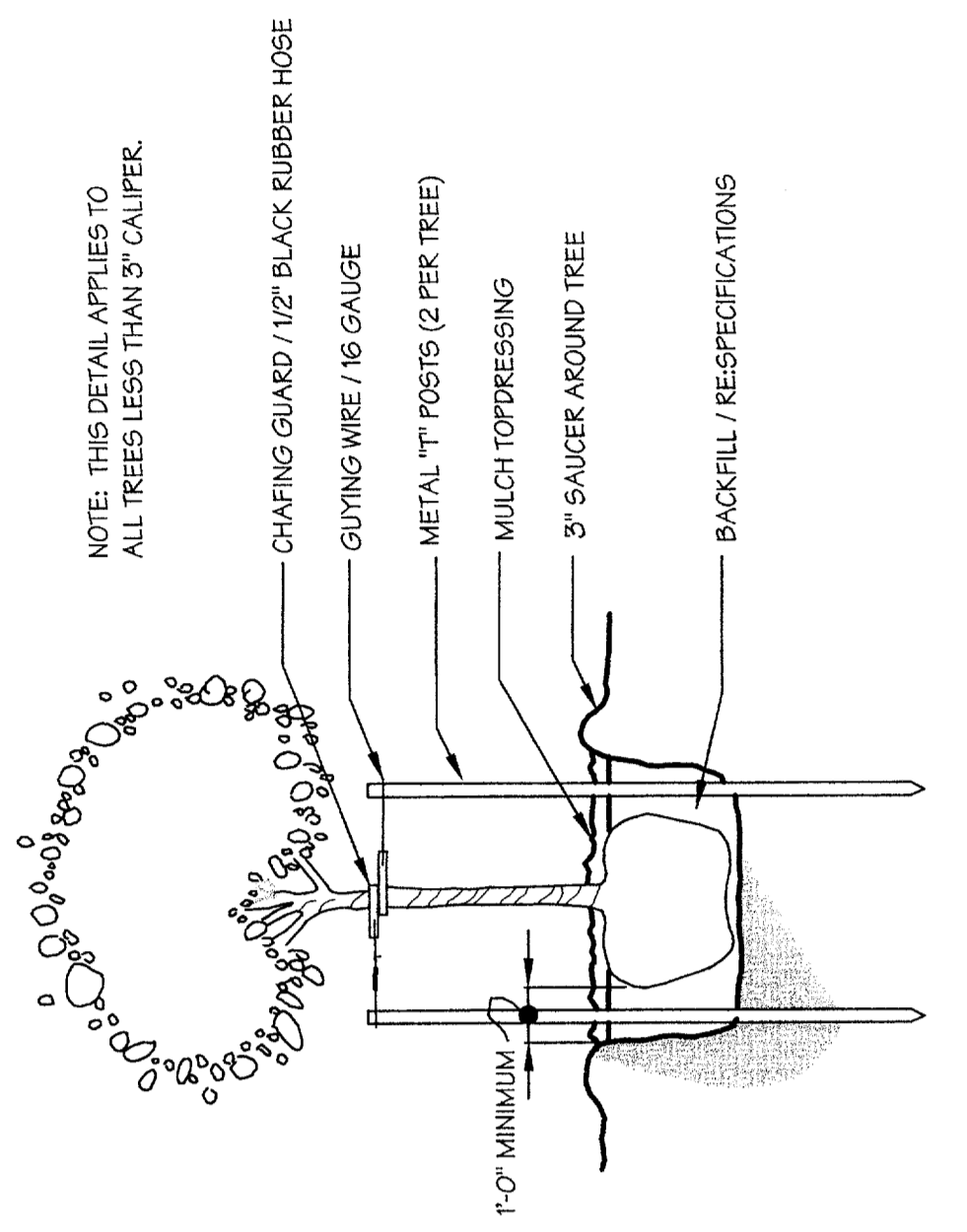
KEY	QTY.	COMMON NAME	BOTANICAL NAME	SIZE	REMARKS
LO	4	LIVE OAK	Quercus virginiana	100 gallon, minimum 3 1/2" caliper, 15' ht. & 6" spread.	Container-grown; full head, matched
RO	5	SHUWARD RED OAK	Quercus shumardii	100 gallon, minimum 3 1/2" caliper, 15' ht. & 6" spread.	Container-grown; full head, branching at 6' matched.
CP	24	CHINESE PISTACHE	Pistacia chinensis	100 gallon, minimum 3 1/2" caliper, 15' ht. & 6" spread.	Container-grown; Full, matched specimen quality
LOR	6	CHINESE FRINGE FLOWER	Loropetalum chinense 'Fringy'	7 gallon, minimum 36" ht. and 30" spread.	Full, plant 36" o.c.
JM	2	JAPANESE MAPLE (GREEN)	Acer palmatum 'Vivid'	Minimum 7' ht. and 4" spread.	Specimen container grown or containerized
NRS	11	NELLIE R. STEVENS HOLLY	Ilex 'Nellie R. Stevens'	100 gallon, minimum 3" caliper, 10' ht. & 4" spread.	Container-grown; full to ground, matched.
OH	2	OAKLEAF HYDRANGEA	Hydrangea serrifolia 'Oakleaf'	7 gallon, minimum 36" ht. x 36" spread.	Full, multi-trunk; specimen quality.
GRN	89	GULFSTREAM NANNINA	Nandina domestica 'Gulfstream'	5 gallon, minimum 20" ht. and 18" spread.	Full to ground.
IH	53	INDIAN HAWTHORNE	Raphanopis indica 'Ballantine'	5 gallon, minimum 12" ht. and 15" spread.	Full to ground, plant 24" o.c.
NPH	84	NEEDLEPOINT HOLLY	Ilex cornuta 'Needlepoint'	5 gallon, minimum 24" ht. and 18" spread.	Full to ground.
CLE	84	CLEYEKA	Ternstroemia gymnanthera	5 gallon, minimum 15" ht. and 15" spread.	Full to ground, plant 12" o.c.
HF	157	HOLLY FERN	Cyrtomium filicatum	2 gallon, minimum 15" ht. and 15" spread.	Full to ground, plant 12" o.c.
AJ	3950	ASIAN JASMINE	Trachelospermum asiaticum	1 gallon (minimum 9 runners at 12" long)	Full, plant 18" o.c.
BI	37	"LOW" BOSTON IVY	Pentstemonopsis 'Low'	1 gallon	With stakes; plant as close to wall as possible
WLG	264	WEeping LOVE GRASS	Eragrostis curvula	1 gallon	Full, plant 24" o.c.
MG	1089	MONKEY GRASS	Ophiopogon japonicus	4" pot	Full, plant 12" o.c.
L	354	"BIG BLUE" LIRIOPE	Liriodendron japonicum	4" pot	Full, plant 12" o.c.

**GENERAL NOTES:**  
 1. Quantities shown on Plant List are Landscape Architect's estimate only and should be verified prior to bidding. Contractor shall be responsible for bidding and providing quantity of plants required at spacing designated for tree sizes and configurations shown on plans regardless of quantities designated on Plant List.  
 2. All site requirements and container sizes for plant materials shown on the plant list must be met as a minimum. If any specific requirements cannot be met (for example, if a 100 gallon tree cannot meet the specified caliper requirement), the contractor shall notify the landscape architect prior to bidding. The container size must be met regardless whether the specified sizes can be reached with a smaller size container.  
 3. Contractor to repair all landscape areas disturbed by construction operations. Provide solid sod grass and repair existing irrigation system if necessary. Applies to all information also.

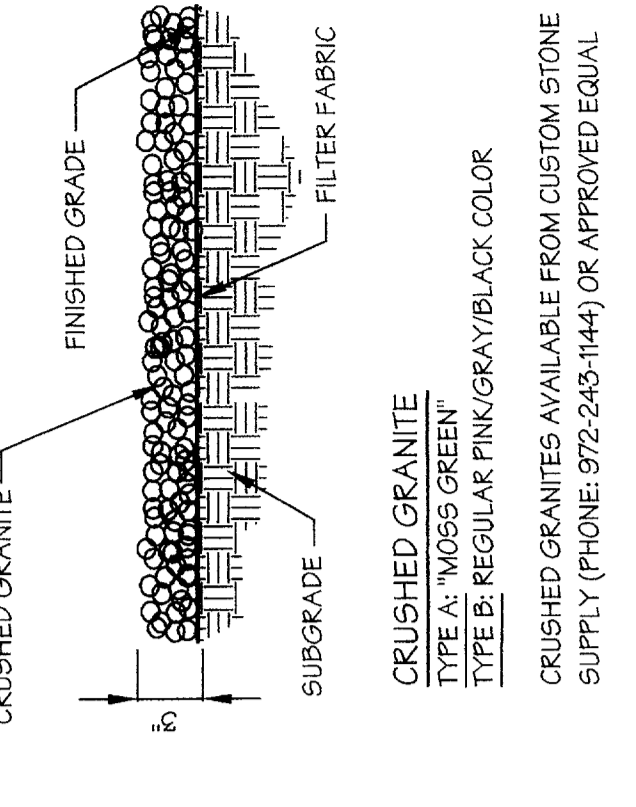


**A LANDSCAPE PLANS**  
 SCALE: 1"=16'-0"

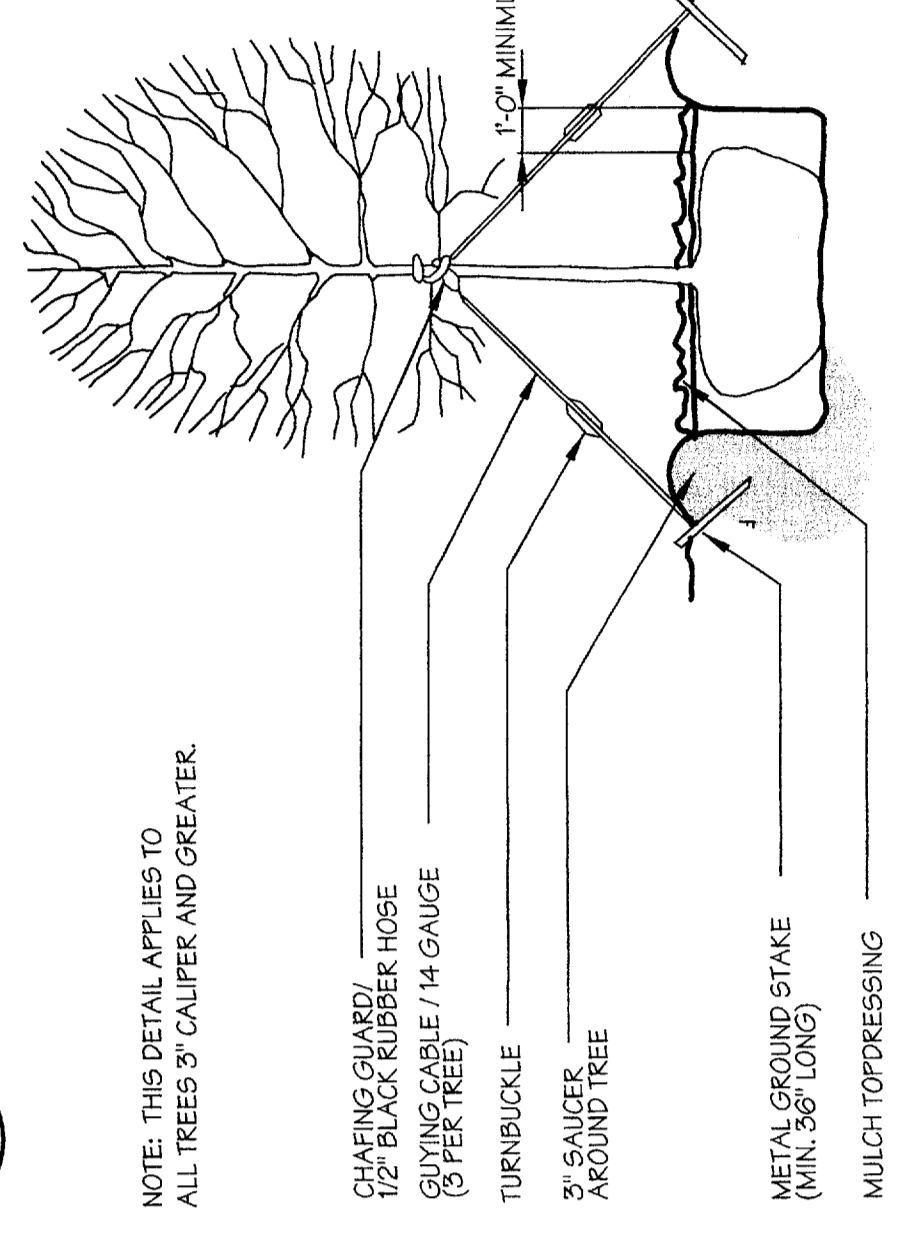
**B TREE STAKING DETAIL**  
 SCALE: N.T.S.



**C STEEL EDGING**  
 SCALE: N.T.S.



**D TREE GUYING DETAIL**  
 SCALE: N.T.S.



**E GRAVEL MULCH**  
 SCALE: N.T.S.



**F SHRUB PLANTING DETAIL**  
 SCALE: N.T.S.

