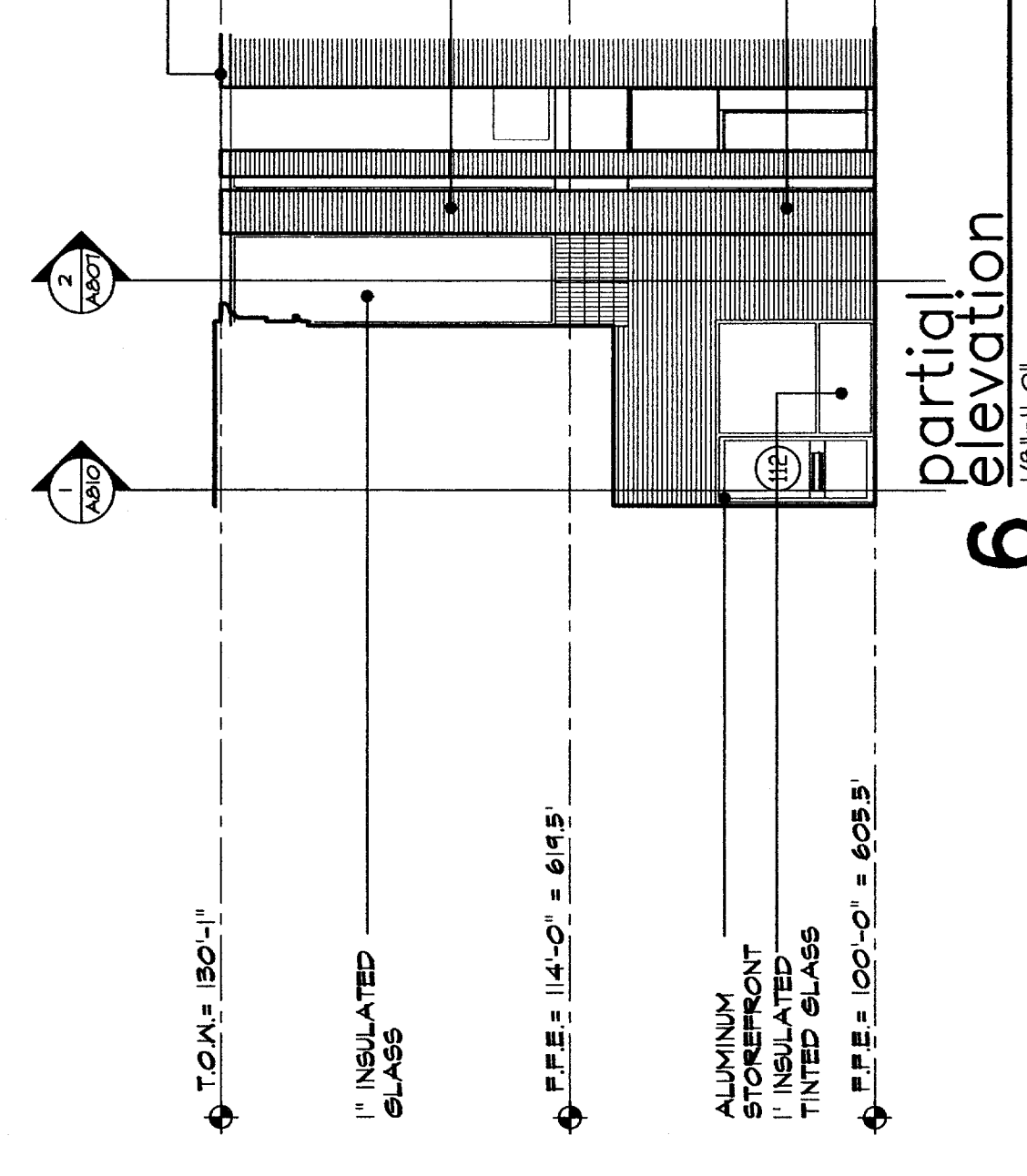
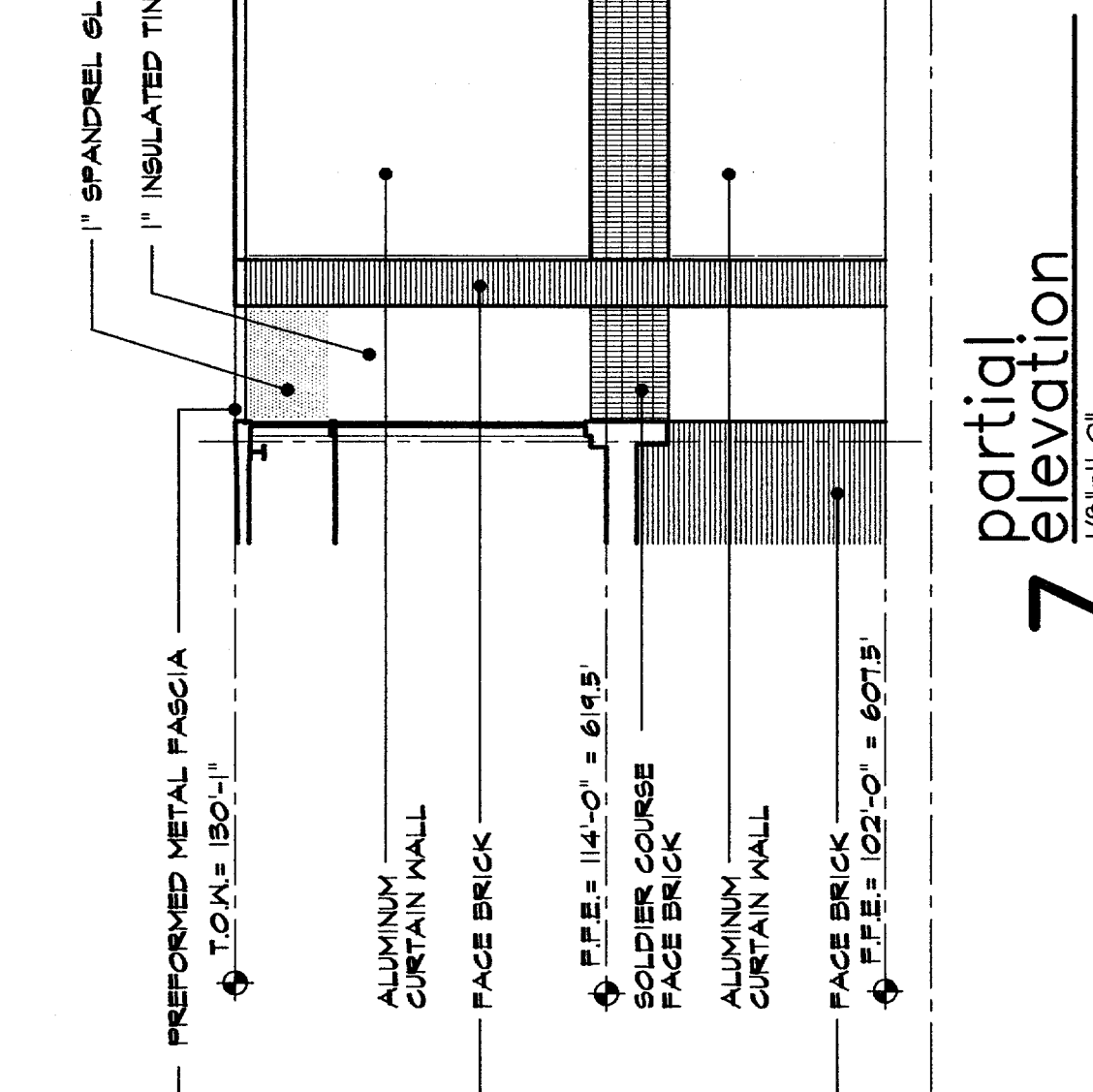


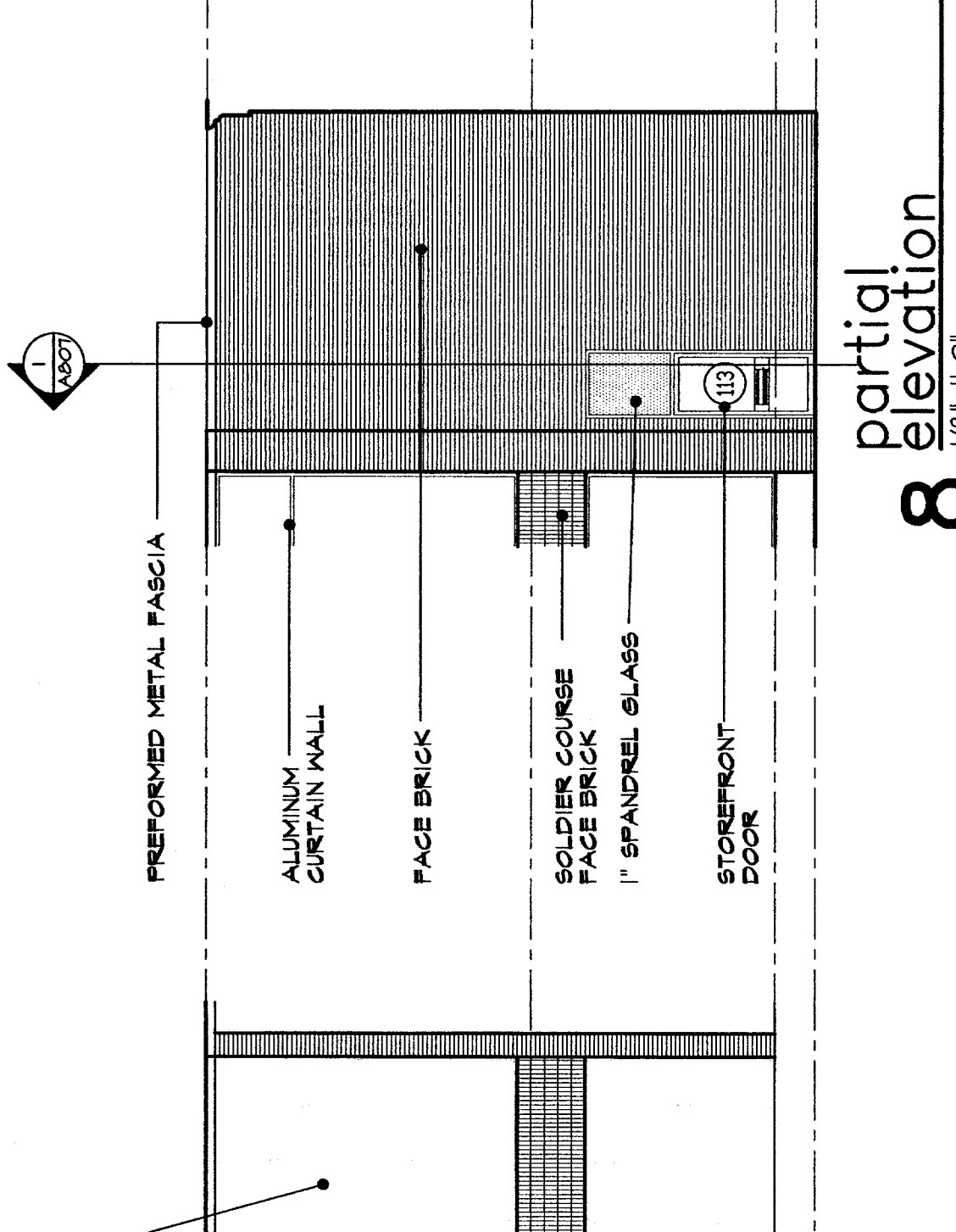
5 northeast elevation
1/8" = 1'-0"



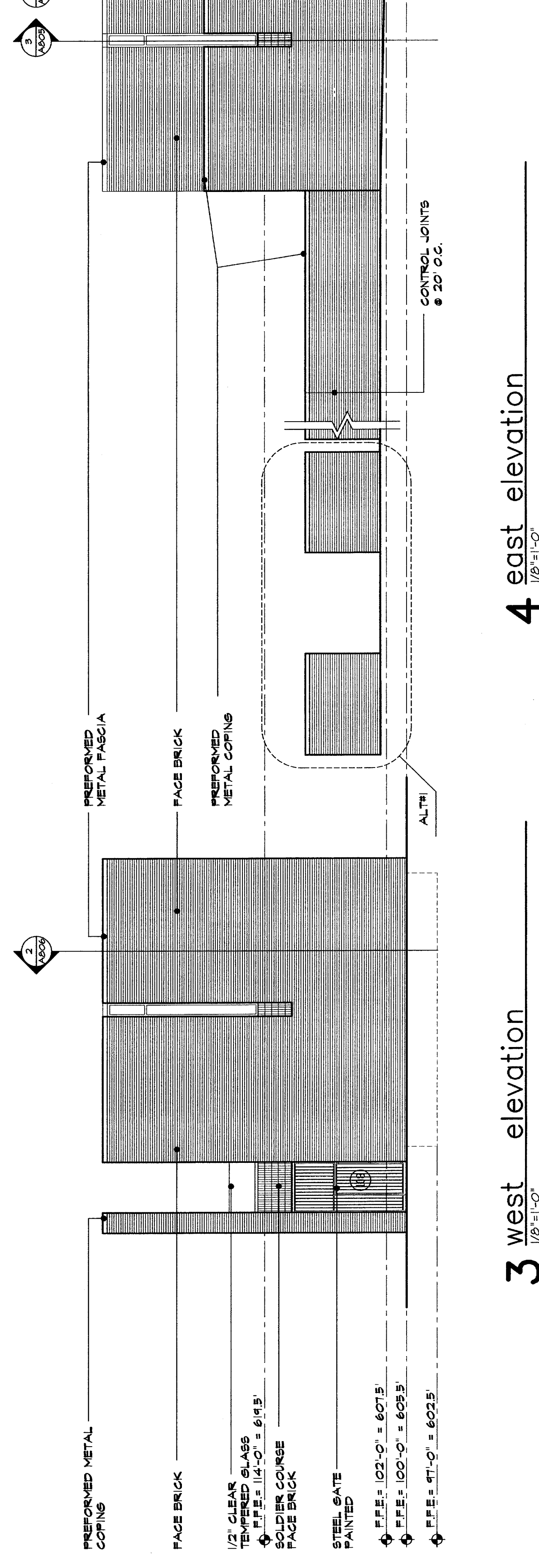
6 partial elevation
1/8" = 1'-0"



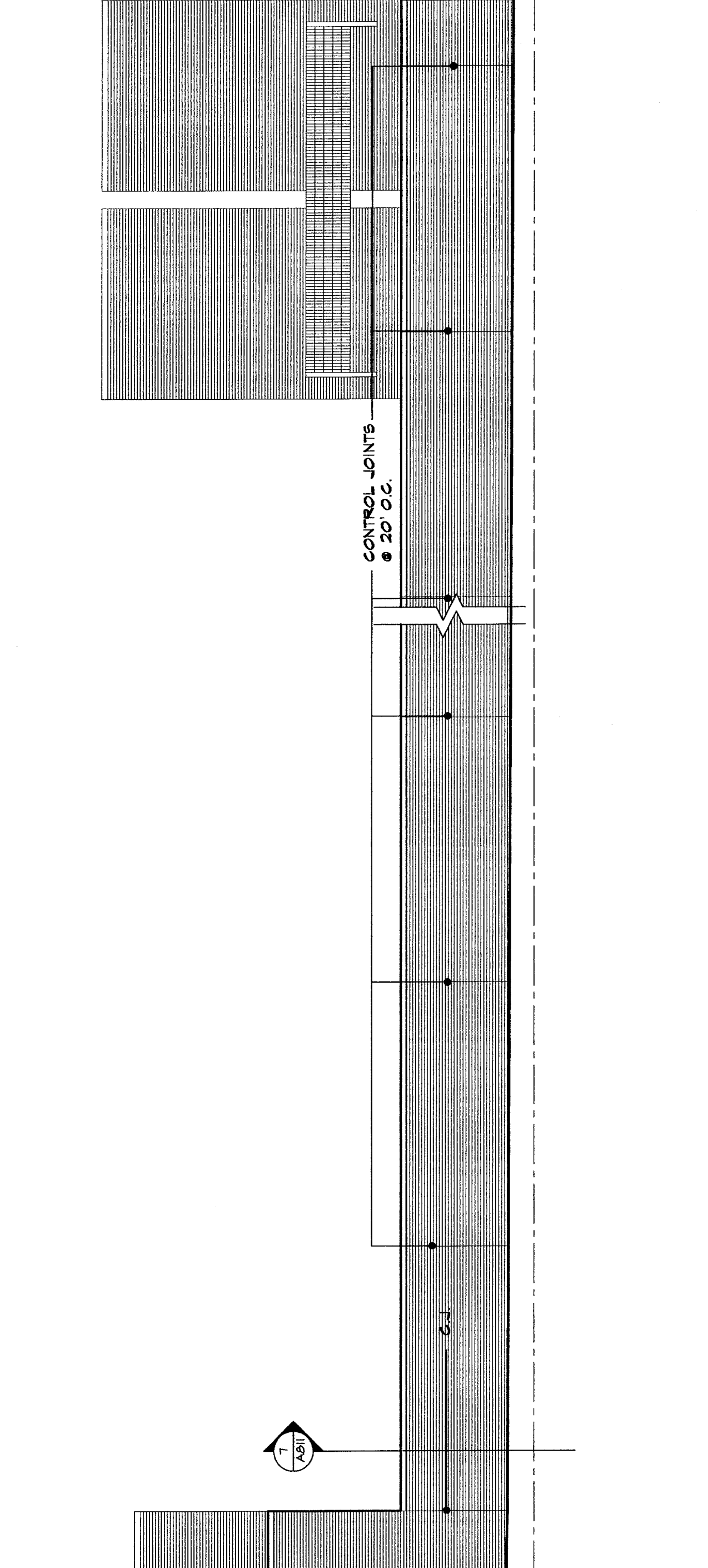
7 partial elevation
1/8" = 1'-0"



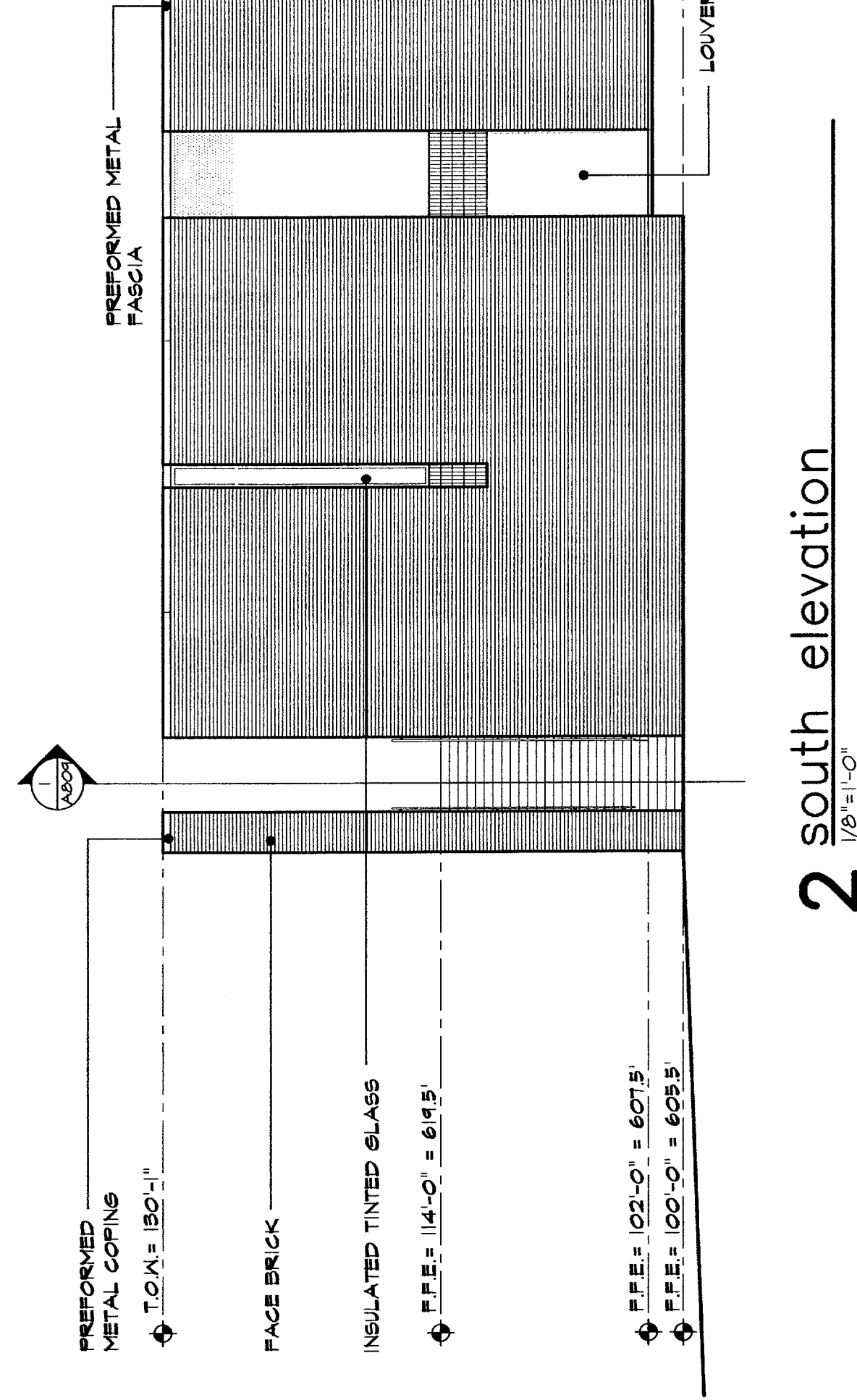
8 partial elevation
1/8" = 1'-0"



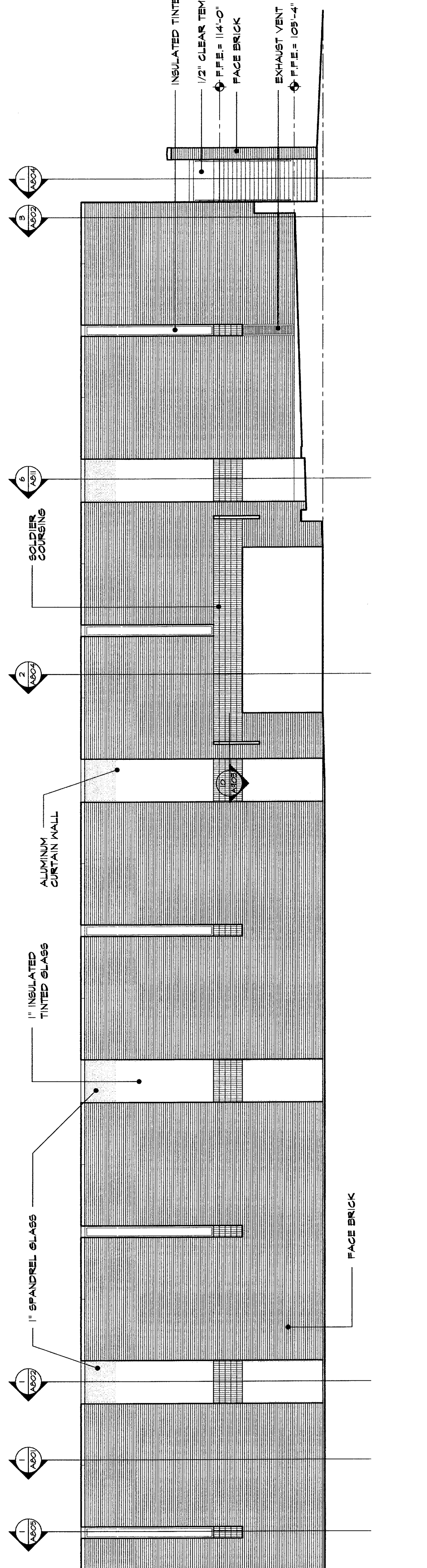
3 west elevation
1/8" = 1'-0"



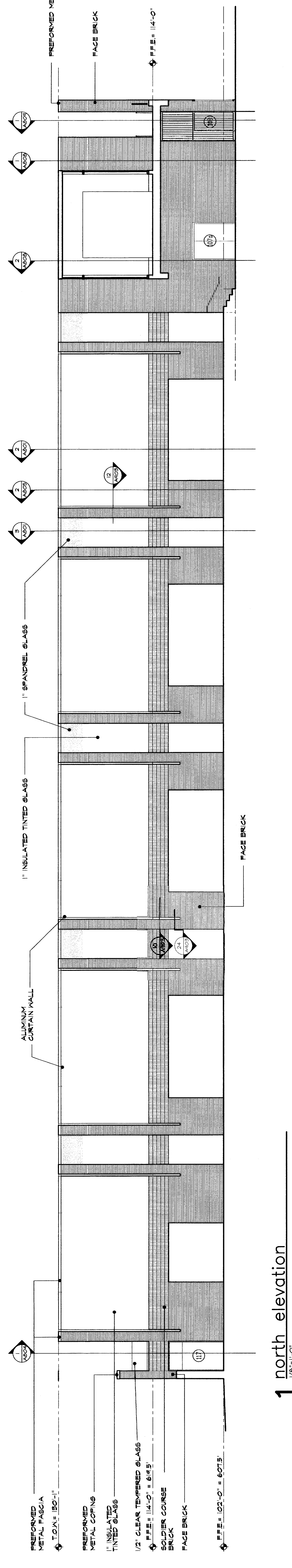
4 east elevation
1/8" = 1'-0"



2 south elevation
1/8" = 1'-0"



1 north elevation
1/8" = 1'-0"



1 north elevation
1/8" = 1'-0"