

ISSUE DATE
FEBRUARY 20, 2002

REVISIONS

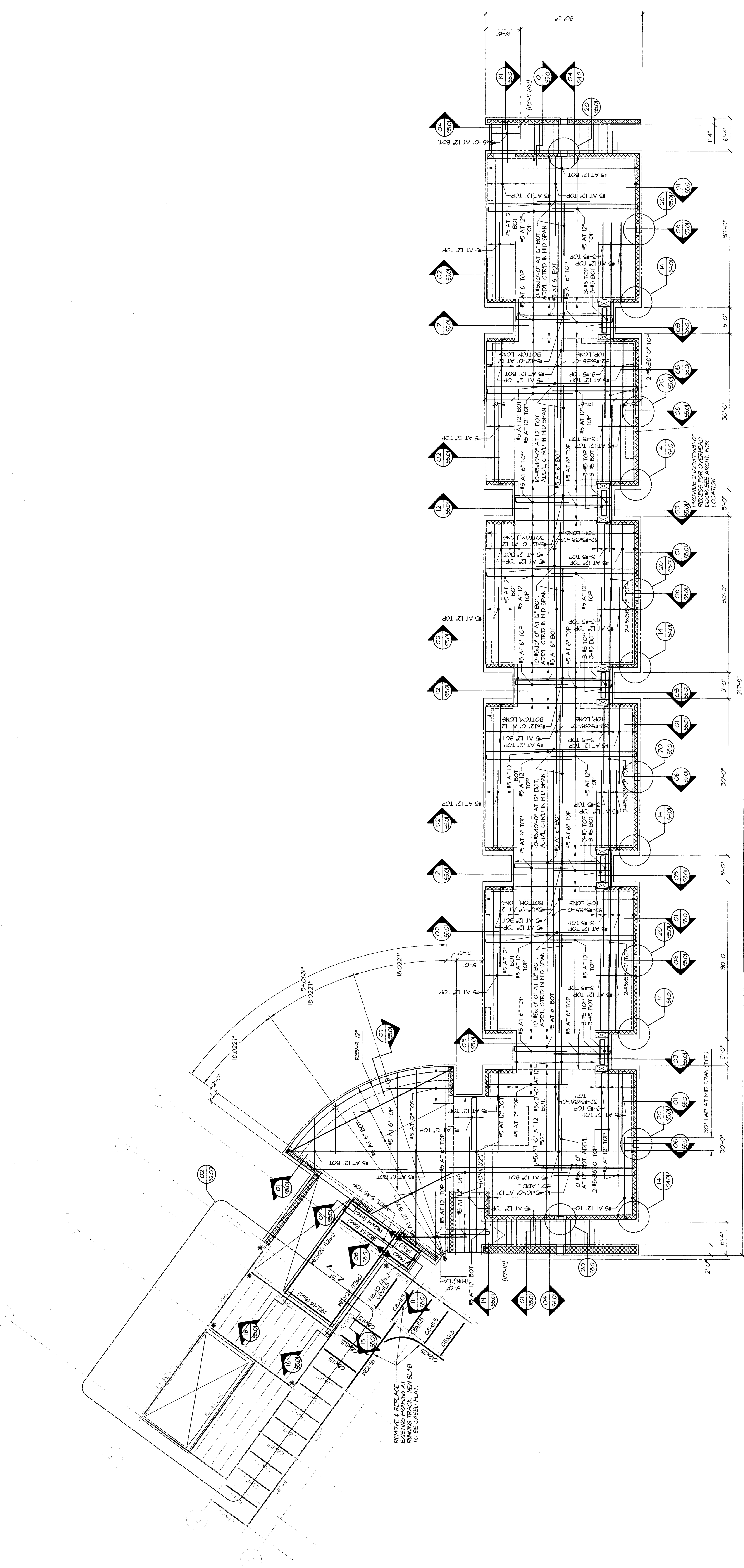
ADDISON ATHLETIC CLUB EXPANSION
LEISURE POOL
AND
ADDISON, TEXAS

RON HOBBS ARCHITECTS
614 W. MAIN ST. SUITE #200 GARLAND, TEXAS 75040
(972) 494-0174 FAX (972) 494-0122

Lee & Baldart
Consulting Engineers, Inc.
12900 Parkside Drive
Dallas, Texas 75228
214-342-0399 Fax 214-342-2600

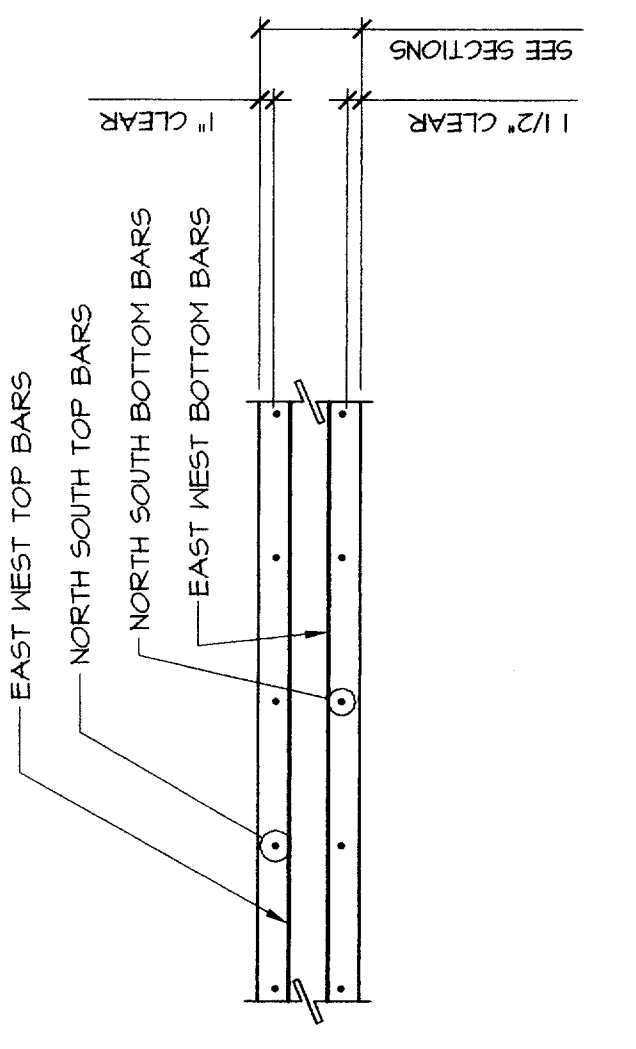
0012
JOB NUMBER
ADDISON ATHLETIC CLUB
EXPANSION & LEISURE POOL

02 SECOND FLOOR FRAMING PLAN
SHEET NUMBER
S2.02



01 SECOND FLOOR FRAMING PLAN
S2.02

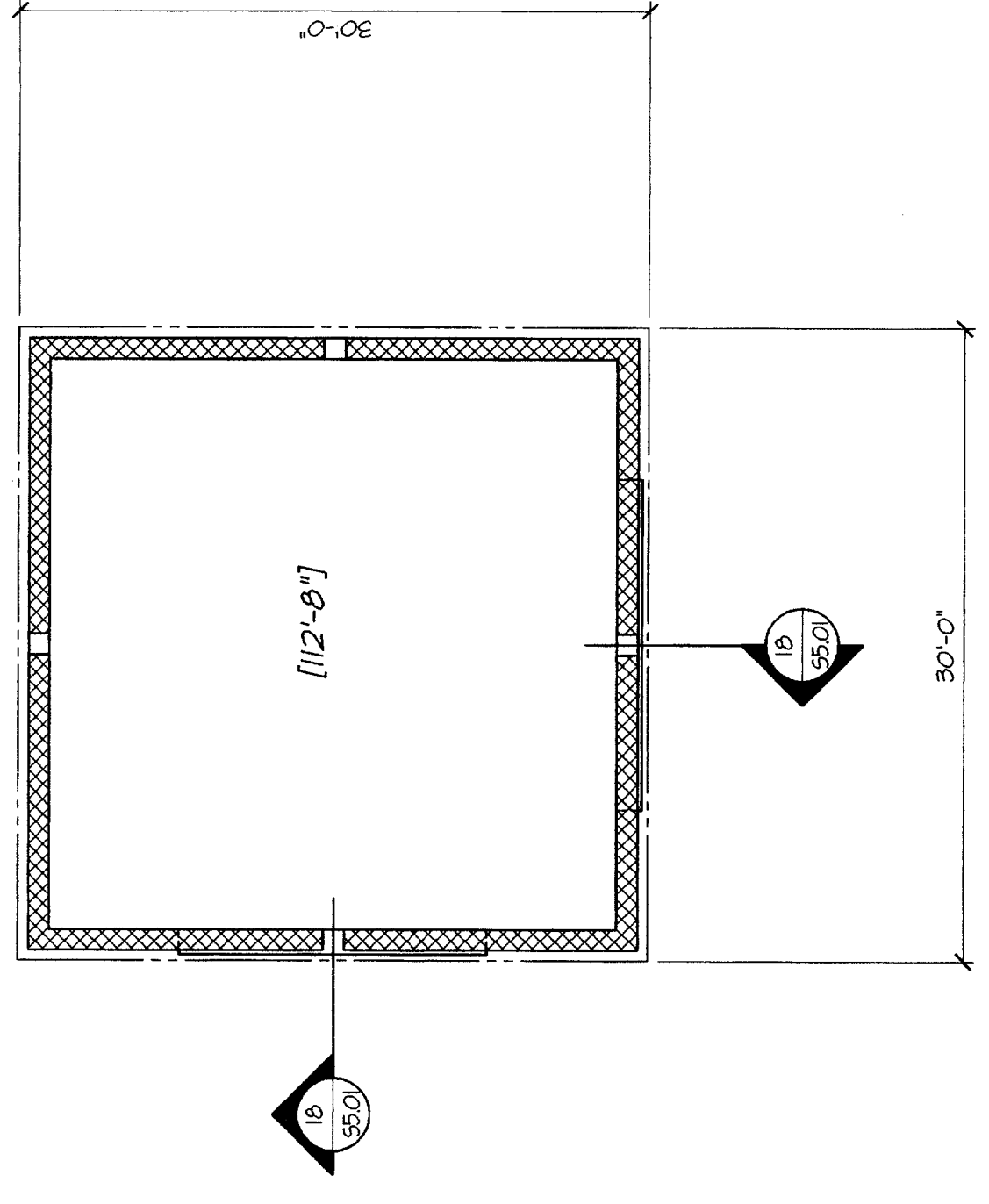
- PLAN NOTES:
- TOP OF SLAB ELEVATION = 114'-0" TYPICAL UNO.
 - "S1" INDICATES 3" x 18" GANGE COMPOSITE METAL DECK + 3 1/4" LIGHT HEIGHT CONCRETE SLAB. REINFORCE PER GENERAL NOTES.
 - SEE SHEET S1.01 FOR GENERAL NOTES.
 - ▲ INDICATES MOMENT CONNECTION.



TYPICAL BAR PLACEMENT

DRAWING INDEX

GENERAL NOTES	S1.01
GENO PLAN	S2.00
TYPICAL FOUNDATION DETAILS	S3.01
PIER SCHEDULE	S3.01
TYPICAL POOL DETAILS	S3.02
TYPICAL CMU DETAILS	S4.01
TYPICAL FLOOR DETAILS	S5.01
TYPICAL ROOF DETAILS	S6.01



02 NORTH PAVILLION INTERMEDIATE FRAMING PLAN
S2.02