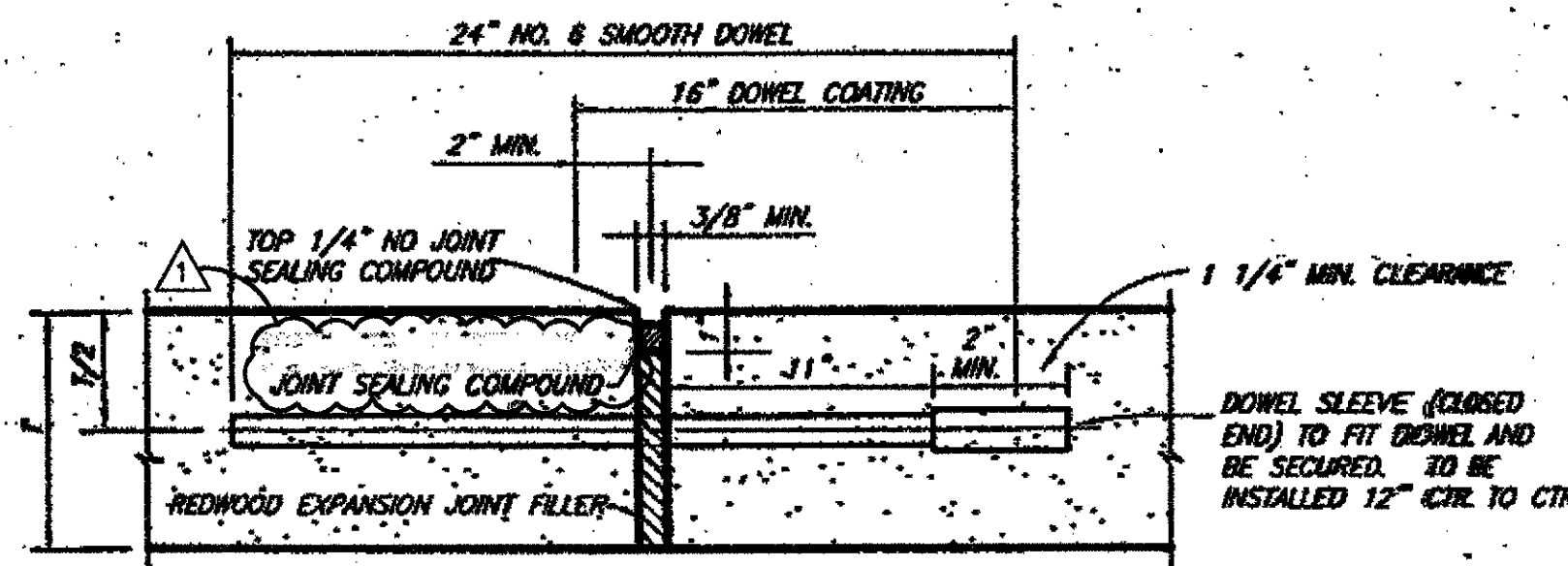


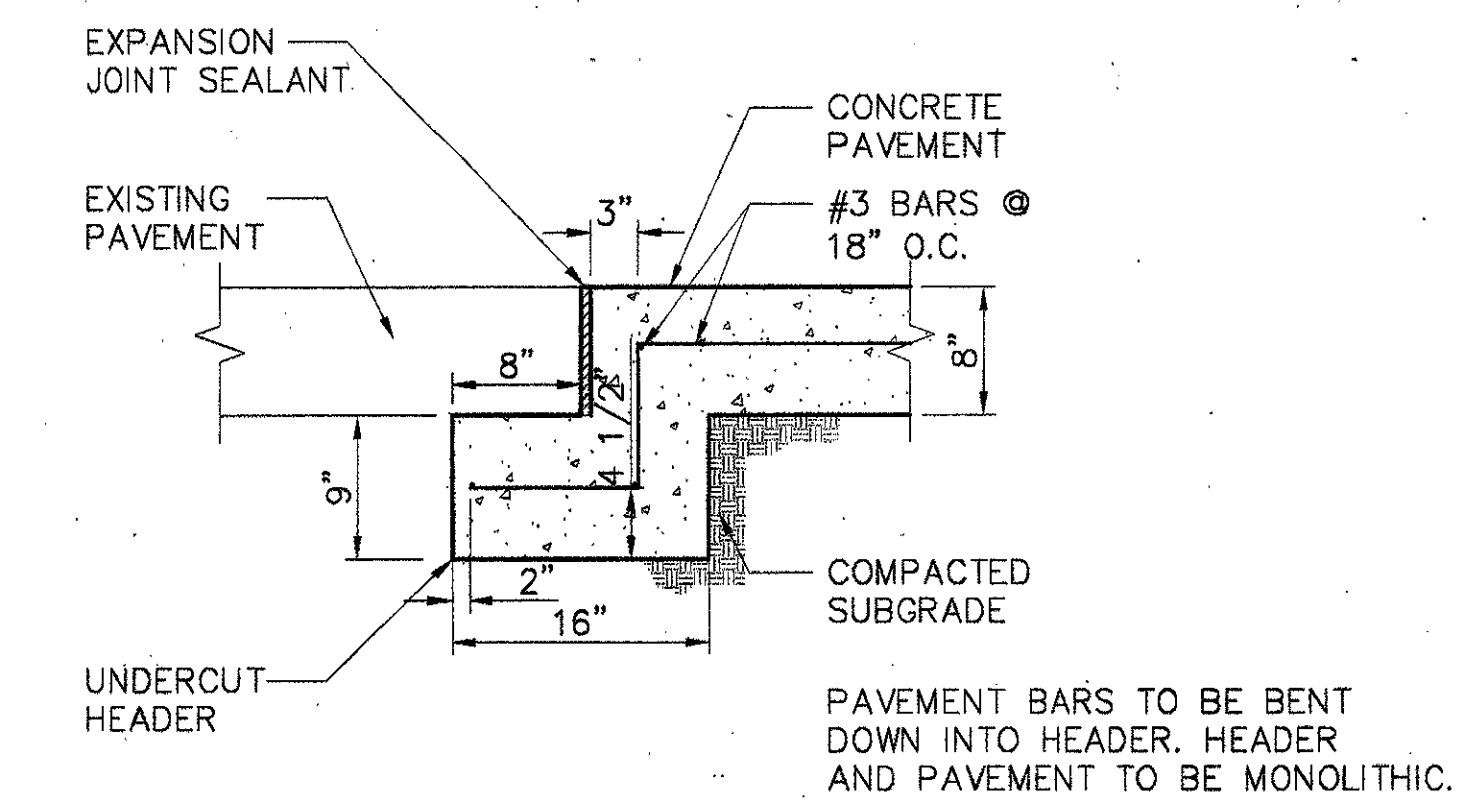
**PAVING NOTES:**

1. CONCRETE FOR ALL STREETS SHALL BE IN ACCORDANCE WITH NCTCDG CLASS "A" CONCRETE (4,000 P.S.I. COMPRESSIVE STRENGTH @ 28 DAYS).
2. REINFORCING STEEL SHALL BE DEFORMED BARS NO. 3, 18 INCHES ON CENTER, OR BARS NO. 4, 24 INCHES ON CENTER. REINFORCING SHALL BE IN BOTH DIRECTIONS ON CENTER. REINFORCING STEEL SHALL BE IN ACCORDANCE WITH ASTM 615, 616 AND 617.
3. ALL REINFORCING STEEL SHALL BE TIED (100%). STEEL SHALL BE SET ON PLASTIC CHAIRS. BAR LAPS ARE TO BE MINIMUM 30 DIAMETER.
4. EXPANSION JOINTS SHALL BE SPACED EVERY 200 FEET AND AT ALL INTERSECTIONS.
5. SAWED TRANSVERSE DUMMY JOINTS SHALL BE SPACED EVERY 20 FEET ON PAVING 8 INCHES OR THICKER AND EVERY 15 FEET FOR PAVING THICKNESS LESS THAN 8 INCHES. SAWING SHALL OCCUR WITHIN 5 TO 12 HOURS AFTER THE POUR INCLUDING SEALING (SILICON SEALANT). OTHERWISE THE SECTION SHALL BE REMOVED AND LONGITUDINAL BUTT JOINT CONSTRUCTED.
6. LIME TRIMMINGS ARE NOT ACCEPTABLE TO ANY USE.
7. ALL FILL SHALL BE COMPACTED BY MECHANICAL METHODS. MAXIMUM LOOSE LIFT FOR COMPACTION SHALL BE 8 INCHES. ALL LIFTS SHALL BE TESTED FOR DENSITY BY AN INDEPENDENT LABORATORY APPROVED BY THE CITY. DENSITY REQUIREMENT SHALL BE AS SHOWN ON THE PLANS FOR THE TYPE OF MATERIAL CALLED FOR IN THE PLANS.
8. ALL DISTURBED AREAS OF ROADWAY WORK SHALL RESTORE GRASS AT COMPLETION OF PROJECT. GRASS SHALL MEET THE REQUIREMENT OF ITEM 3.8, 3.9, 3.10 & 3.11 OF NCTCDG.
9. ALL AREA TO BE EXCAVATED OR FILLED SHALL HAVE EROSION CONTROL PLACED PRIOR TO COMMENCING EARTHWORK. EROSION CONTROL DEVICES SHALL BE MAINTAINED THROUGHOUT THE PROJECT IN ACCORDANCE WITH NCTCDG ITEM 3.12.
10. SIDEWALK SHALL BE DOWELED TO PAVEMENT WHERE IT ABUTS DRIVEWAY, AND EXPANSION JOINT MATERIAL SHALL BE USED AT THESE LOCATIONS.
11. NO VEHICLES SHALL BE PERMITTED ON CONCRETE PAVEMENT WITHOUT APPROVAL FROM THE CITY. THE CITY WILL MAKE DETERMINATION BASED ON CONCRETE BREAK REPORT.

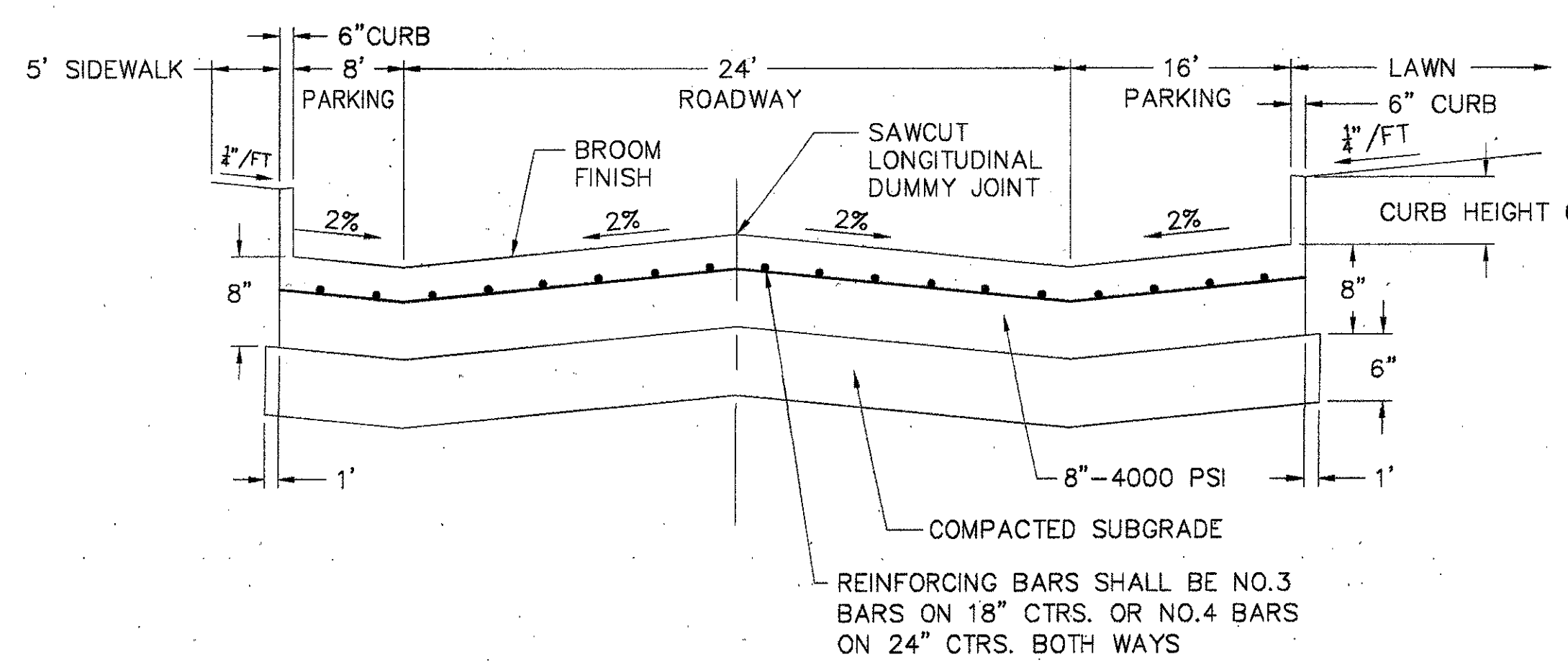


- TRANSVERSE EXPANSION JOINT NOTES:**
1. DOWELS AND REINFORCING BARS SHALL BE SUPPORTED BY AN APPROVED DEVICE.
  2. TRANSVERSE EXPANSION JOINTS SHALL BE SPACED AT 400 FT. MAXIMUM AND AT ALL INTERSECTIONS.

1 TRANSVERSE EXPANSION JOINT



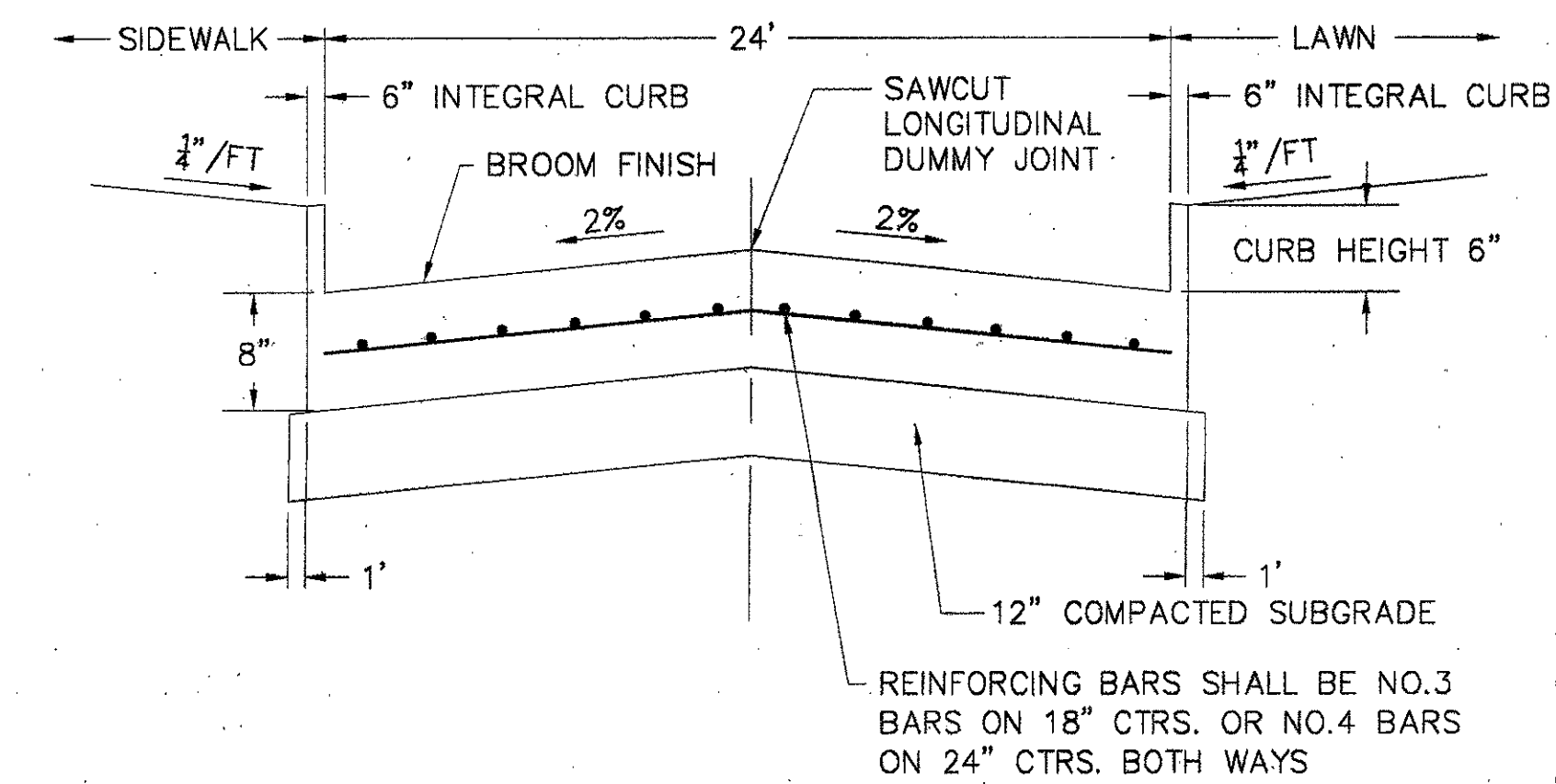
2 ROADWAY PAVEMENT UNDERCUT HEADER SECTION  
SCALE: NTS



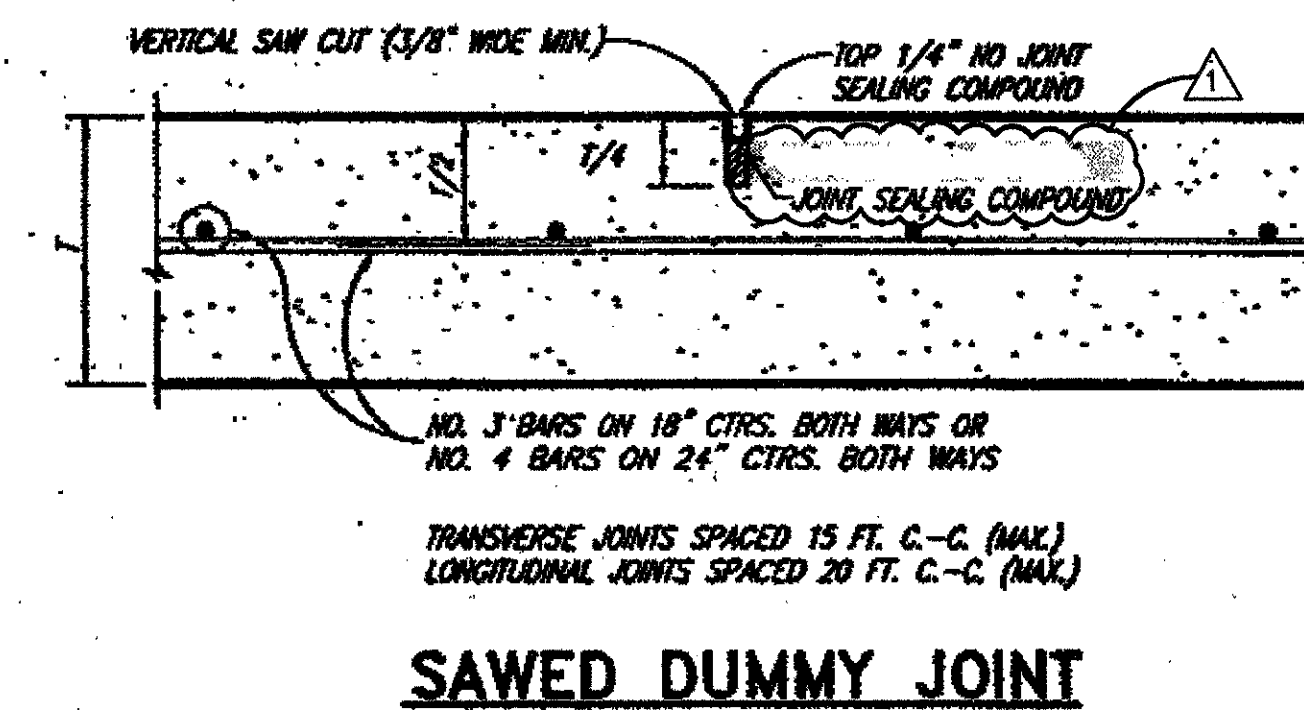
**STANDARD SPECIFICATIONS:**

- A. REINFORCED CONCRETE PAVEMENTS
1. ALL CURBS SHALL BE PLACED INTEGRAL WITH PAVEMENT.
  2. CURBS SHALL MEET THE SAME COMPRESSIVE STRENGTH AS SPECIFIED FOR THE CONCRETE PAVEMENT.
  3. BAR CHAIRS OR AN APPROVED SUPPORTING DEVICE SHALL BE FURNISHED.
- B. CROSS SLOPE SHALL BE 1/4 PER FOOT UNLESS APPROVED BY ENGINEER

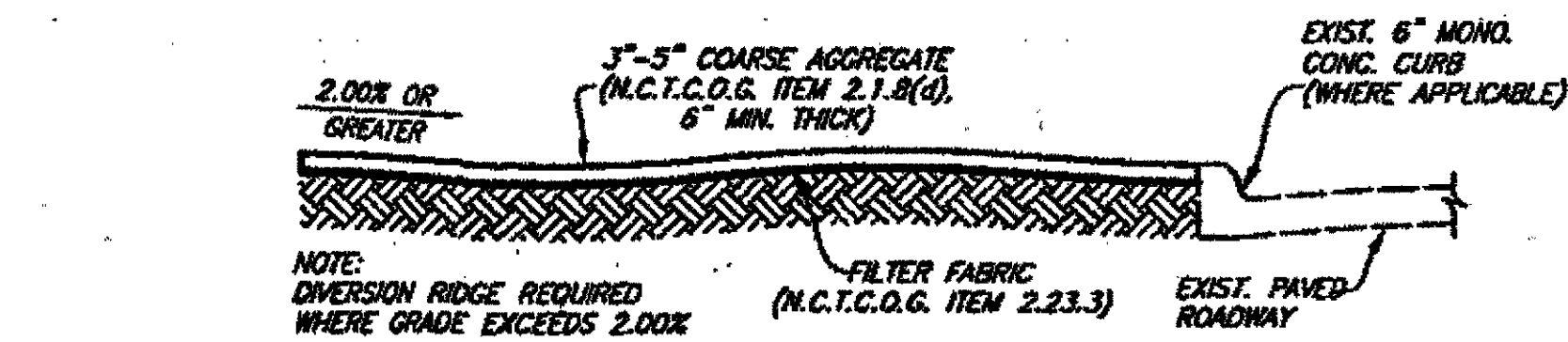
3 TYPICAL CROSS SECTION OF FESTIVAL WAY (A-A)  
SCALE: NTS



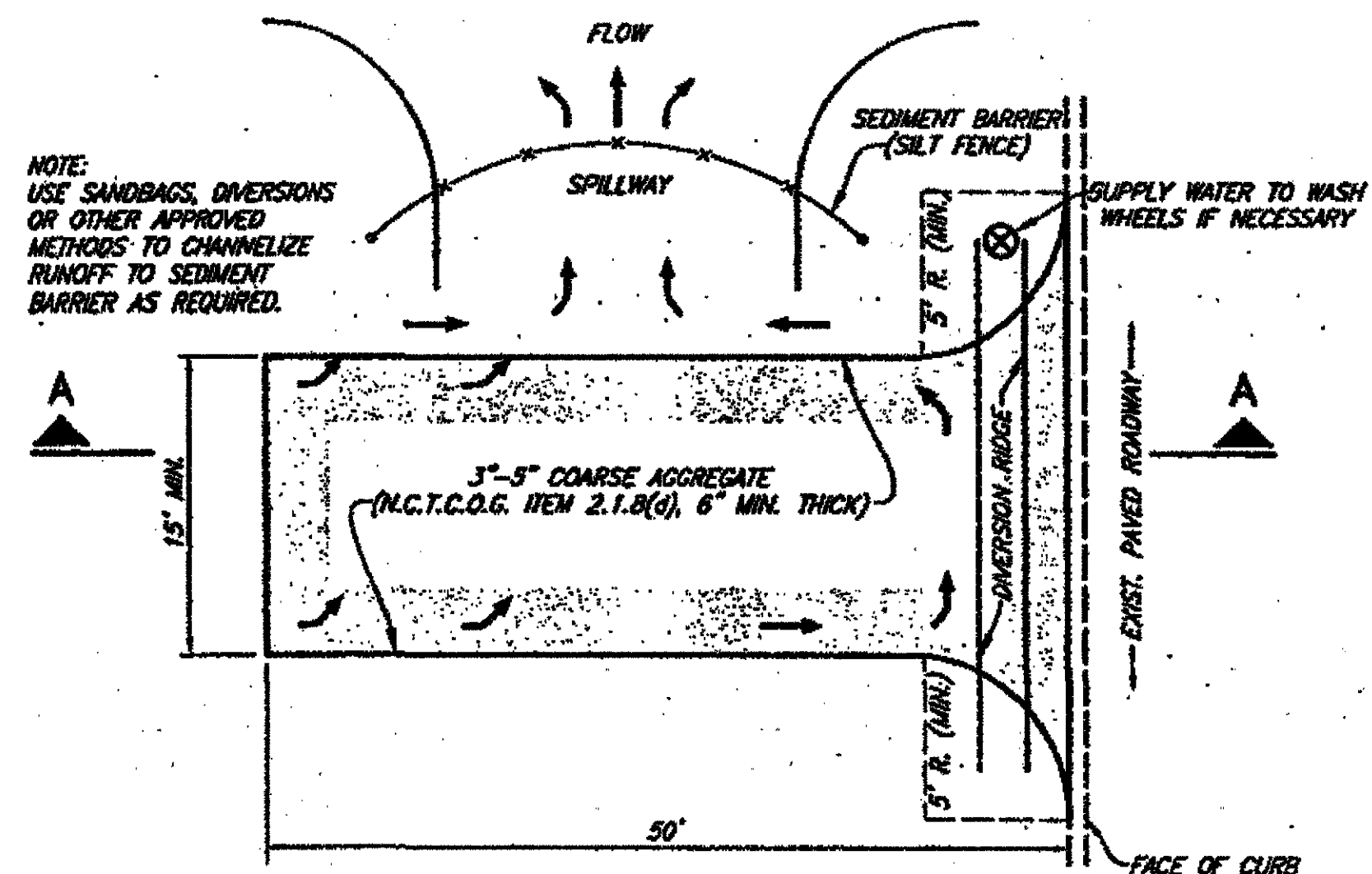
4 TYPICAL CROSS SECTION OF FESTIVAL WAY (B-B)  
SCALE: NTS



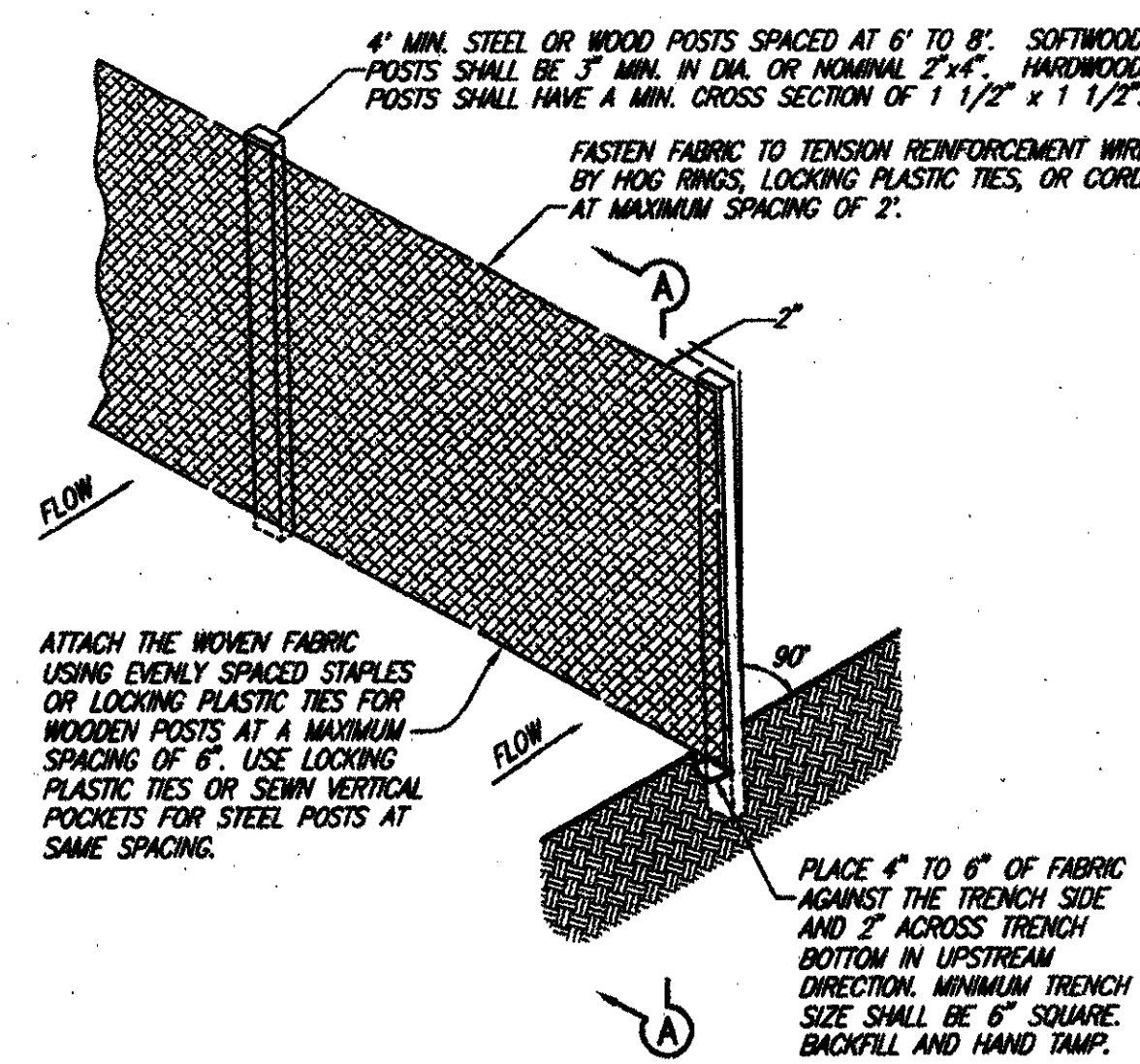
SAWED DUMMY JOINT



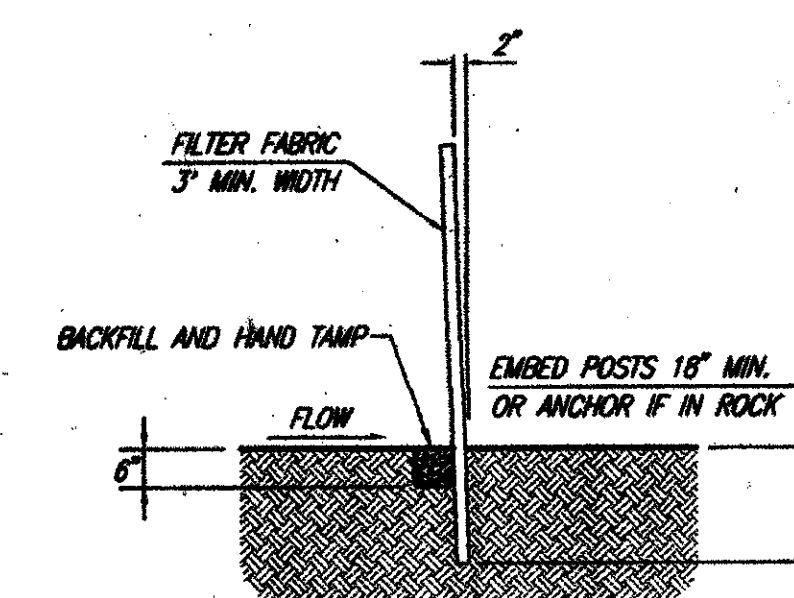
SECTION A-A



PLAN  
CONSTRUCTION ENTRANCE ROAD  
FOR EROSION CONTROL  
NO SCALE



5 SILT FENCE ALTERNATE  
NO SCALE

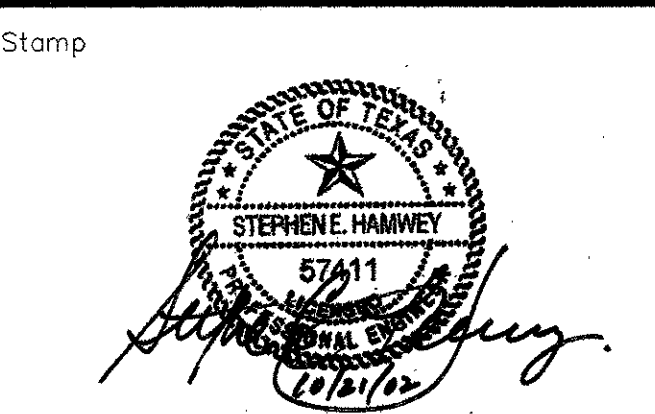


SECTION A-A  
NO SCALE

**EROSION CONTROL ALTERNATES**

ADDENDUM #2	10-21-02
ISSUED FOR CONSTRUCTION	09-30-02
No. Description	Date

**DWG. ISSUE & REVISION HISTORY**



Project Title:  
**ADDISON ARTS & EVENTS DISTRICT**  
ADDISON, TEXAS

Drawing Title:  
**SITE DETAILS**  
ROADWAY PAVING

Project No. 14516.00 Scale: AS NOTED  
Drawn By: SJM  
Checked By: TC  
Approved By: SEH  
Date: September 30, 2002

Drawing No. **C8-3**