

ELECTRICAL ABBREVIATIONS
(ALL ABBREVIATIONS MAY NOT APPEAR ON DRAWINGS.)

2SCP	2-SPEED, CONSEQUENT POLE	FLEX	FLEXIBLE	NFS	NON-FUSIBLE SAFETY SWITCH
2SSW	2-SPEED, SEPARATE WINDING	FS	FUSIBLE SAFETY SWITCH OR FUSIBLE SWITCH	NIC	NOT IN CONTRACT
A	AMPERE(S)	FVNR	FULL VOLTAGE, NON-REVERSING	NO	NORMALLY OPEN
AC	ALTERNATING CURRENT	FVR	FULL VOLTAGE, REVERSING	NTS	NOT TO SCALE
ACCU	AIR-COOLED CONDENSING UNIT	G	GROUND	OH	OVERHEAD
ADA	AMERICANS WITH DISABILITIES ACT	GFI	GROUND FAULT CIRCUIT INTERRUPT	P	POLE(S)
AFF	ABOVE FINISHED FLOOR	PA	PUBLIC ADDRESS SYSTEM	PF	POWER FACTOR
AFC	ABOVE FINISHED CEILING	PL	PILOT LIGHT	PFL	PANELBOARD
AFG	ABOVE FINISHED GRADE	HP	HORSEPOWER	PVC	POLYVINYL CHLORIDE
AHU	AIR HANDLING UNIT	HPS	HIGH PRESSURE SODIUM	RC	REMOTE CONTROL
AIC	AMPERE INTERRUPTING CAPACITY(ROOF MEAN SQUARE ALTERNATE)	HVAC	HEATING, VENTILATION AND AIR CONDITIONING	RCP	REFLECTED CEILING PLAN
ALT	ALTERNATE	HZ	HERTZ	REC	RECEPTACLES(S)
APPROX	APPROXIMATE OR APPROXIMATELY	IES	ILLUMINATING ENGINEERING SOCIETY OF NORTH AMERICA	RGS	RIGID GALVANIZED STEEL
ARCH	ARCHITECT	IG	ISOLATED GROUND	RVSS	REDUCED VOLTAGE, SOLID STATE
ATS	AUTOMATIC TRANSFER SWITCH	IMC	INTERMEDIATE METALLIC CONDUIT	SF	SQUARE FOOT OR FEET
AUX	AUXILIARY	JBOX	JUNCTION BOX	SPDT	SINGLE-POLE, DOUBLE-THROW
AWG	AMERICAN WIRE GAGE	KA	KILOAMPERE(S)	SPST	SINGLE-POLE, SINGLE-THROW
BFC	BELOW FINISHED CEILING	KW	KILOWATTS(S)	SS	START-STOP
BFG	BELOW FINISHED GRADE	KWH	KILOWATT-HOUR(S)	SW	SWITCH
BLDG	BUILDING	KV	KILOVOLT(S)	SWBD	SWITCHBOARD
C	CONDUIT OR TUBING	KVA	KILOVOLT-AMPERE(S)	TA	TRIP AMPERE(S)
CATV	CABLE TELEVISION	KVAR	KILOVOLT-AMPERE(S) REACTIVE	TAS	TEXAS ACCESSIBILITY STANDARDS
CB	CIRCUIT BREAKER	LPS	LOW PRESSURE SODIUM	TEL	TELEPHONE
CCTV	CLOSED-CIRCUIT TELEVISION	LTG	LIGHTING	TEMP	TEMPORARY
CKT	CIRCUIT	m	METER(S)	TU	TEXAS UTILITIES ELECTRIC
CLG	CEILING	MAX	MAXIMUM	TV	TELEVISION
COMM	COMMUNICATIONS	MCB	MAIN CIRCUIT BREAKER	TYP	TYPICAL
CT(S)	CURRENT TRANSFORMER(S)	MCC	MOTOR CONTROL CENTER	UG	UNDERGROUND
DC	DIRECT CURRENT	MCP	MOTOR CIRCUIT PROTECTOR	UL	UNDERWRITERS LABORATORIES, INC.
DISC	DISCONNECT	MH	METAL HALIDE	UNO	UNLESS NOTED OTHERWISE
DPDT	DOUBLE-POLE, DOUBLE THROW	MIC	MICROPHONE	UPS	UNINTERRUPTIBLE POWER SUPPLY
DPST	DOUBLE POLE, SINGLE THROW	MIN	MINIMUM	V	VOLTAGE OR VOLT(S)
DWG(S)	DRAWING(S)	MLO	MAIN LUGS ONLY	VA	VOLT-AMPERE(S)
EC	EMPTY CONDUIT OR TUBING	mm	MILLIMETER(S)	VFD	VARIABLE FREQUENCY DRIVE
EGS	ENGINE-GENERATOR SET	MMS	MANUAL MOTOR STARTER	W	WATT(S)
EHH	ELECTRICAL HANDHOLE	MTS	MANUAL TRANSFER SWITCH	WP	WEATHERPROOF
ELEV	ELEVATION	MVA	MEGAVOLT-AMPERE(S)	W/	WITH
EMERG	EMERGENCY	MVAR	MEGAVOLT-AMPERE(S) REACTIVE	W/O	WITHOUT
EMH	ELECTRICAL MANHOLE	MW	MEGAWATT(S)	XFMR	TRANSFORMER
EMT	ELECTRICAL METALLIC TUBING	NC	NORMALLY CLOSED	XP	EXPLOSION-PROOF
EWC	ELECTRICAL WATER COOLER	NEC	NATIONAL ELECTRICAL CODE	Δ	DELTA
EX	EXISTING	NEMA	NATIONAL ELECTRICAL MANUFACTURER'S ASSOCIATION	#	NUMBER
F	FUSE(S)	NFPA	NATIONAL FIRE PROTECTION ASSOCIATION	∅	PHASE(S)
FAAP	FIRE ALARM ANNUNCIATOR PANEL				
FACP	FIRE ALARM CONTROL PANEL				
FBO	FURNISHED BY OWNER				
FL	FLOOR				
FLA	FULL LOAD AMPERE(S)				

ELECTRICAL SYMBOLS LIST
(ALL SYMBOLS MAY NOT APPEAR ON DRAWINGS.)

○	— CEILING-MOUNTED RECESSED, SURFACE OR SUSPENDED LIGHT FIXTURE.	⚡	— SINGLE-POLE SWITCH AT 48" ABOVE FINISHED FLOOR UNO.
⊙	— CEILING-MOUNTED RECESSED, SURFACE OR SUSPENDED EMERGENCY LIGHT FIXTURE.	⚡	— TWO-POLE SWITCH AT 48" ABOVE FINISHED FLOOR UNO.
○	— WALL-MOUNTED RECESSED OR SURFACE LIGHT FIXTURE.	⚡	— THREE-WAY SWITCH AT 48" ABOVE FINISHED FLOOR UNO.
○	— CEILING-MOUNTED RECESSED, SURFACE OR SUSPENDED INDIVIDUAL LIGHT FIXTURE.	⚡	— FOUR-WAY SWITCH AT 48" ABOVE FINISHED FLOOR UNO.
⊙	— CEILING-MOUNTED RECESSED, SURFACE OR SUSPENDED INDIVIDUAL EMERGENCY LIGHT FIXTURE.	⚡	— KEY-OPERATED SWITCH AT 48" ABOVE FINISHED FLOOR UNO.
○	— CEILING-MOUNTED RECESSED, SURFACE OR SUSPENDED INDIVIDUAL LIGHT FIXTURE.	⚡	— SINGLE-POLE SWITCH AND PILOT LIGHT AT 48" ABOVE FINISHED FLOOR UNO.
⊙	— CEILING-MOUNTED RECESSED, SURFACE OR SUSPENDED INDIVIDUAL EMERGENCY LIGHT FIXTURE.	⚡	— TIME SWITCH AT 48" ABOVE FINISHED FLOOR UNO.
⊙	— CEILING-MOUNTED RECESSED, SURFACE OR SUSPENDED INDIVIDUAL LIGHT FIXTURE.	⚡	— SINGLE-POLE SWITCH WITH WEATHERPROOF COVERPLATE AT 48" ABOVE FINISHED GRADE OR FLOOR UNO.
⊙	— CEILING-MOUNTED RECESSED, SURFACE OR SUSPENDED INDIVIDUAL EMERGENCY LIGHT FIXTURE.	⚡	— SINGLE-POLE MOTOR THERMAL OVERLOAD SWITCH.
⊙	— CEILING-MOUNTED RECESSED, SURFACE OR SUSPENDED INDIVIDUAL LIGHT FIXTURE.	⚡	— NURSE CALL SYSTEM DEVICE; SEE NURSE CALL SYSTEM DEVICE SCHEDULE ON DRAWINGS.
⊙	— CEILING-MOUNTED RECESSED, SURFACE OR SUSPENDED INDIVIDUAL EMERGENCY LIGHT FIXTURE.	⚡	— PAGING SYSTEM DEVICE; SEE PAGING SYSTEM DEVICE SCHEDULE ON DRAWINGS.
⊙	— CEILING-MOUNTED RECESSED, SURFACE OR SUSPENDED INDIVIDUAL LIGHT FIXTURE.	⚡	— FIRE ALARM SYSTEM MANUAL PULL STATION AT 48" ABOVE FINISHED FLOOR UNO.
⊙	— CEILING-MOUNTED SURFACE OR SUSPENDED FLUORESCENT STRIP.	⚡	— FIRE ALARM SYSTEM SMOKE DETECTOR; SUBSCRIPTED U INDICATES UNDER FLOOR MOUNTING.
⊙	— CEILING-MOUNTED SURFACE OR SUSPENDED FLUORESCENT STRIP ON EMERGENCY.	⚡	— FIRE ALARM SYSTEM HEAT DETECTOR.
⊙	— CEILING-MOUNTED SURFACE OR SUSPENDED FLUORESCENT STRIP ON EMERGENCY.	⚡	— FIRE ALARM SYSTEM STROBE LIGHT AT 80" AFF OR 6" BFC, WHICHEVER IS LOWER; SUBSCRIPTED 1 INDICATES 110 CANDELA INTENSITY.
⊙	— WALL WASH DOWNLIGHT; UNSHADED HALF INDICATES ILLUMINATION DIRECTION.	⚡	— FIRE ALARM SYSTEM HORN AT 90" AFF OR 6" BFC, WHICHEVER IS LOWER.
⊙	— POLE MOUNTED FLOODLIGHTS (2 LUMINAIRS SHOWN).	⚡	— FIRE ALARM SYSTEM BELL AT 90" AFF OR 6" BFC, WHICHEVER IS LOWER.
⊙	— CEILING-MOUNTED SURFACE OR SUSPENDED SINGLE-FACE EXIT SIGN WITH DIRECTIONAL ARROW AS INDICATED; SHADED QUADRANT INDICATES FACE OF SIGN.	⚡	— FIRE ALARM SYSTEM HORN/STROBE LIGHT AT 80" AFF OR 6" BFC, WHICHEVER IS LOWER; SUBSCRIPTED 1 INDICATES 110 CANDELA INTENSITY.
⊙	— CEILING-MOUNTED SURFACE OR SUSPENDED DOUBLE-FACE EXIT SIGN WITH DIRECTIONAL ARROWS AS INDICATED; SHADED QUADRANT INDICATES FACES OF SIGN.	⚡	— FIRE ALARM SYSTEM BELL/STROBE LIGHT AT 80" AFF 1 INDICATES 110 CANDELA INTENSITY.
⊙	— WALL-MOUNTED EXIT SIGN WITH DIRECTIONAL ARROW(S) AS INDICATED; SHADED QUADRANT(S) INDICATE FACE(S) OF SIGN.	⚡	— SPRINKLER SYSTEM TAMPER SWITCH.
⊙	— EMERGENCY LIGHT FIXTURE.	⚡	— SPRINKLER SYSTEM FLOW SWITCH.
⊙	— JUNCTION BOX.	⚡	— SPRINKLER SYSTEM PRESSURE SWITCH.
⊙	— SINGLE RECEPTACLE; NEMA 5-20R AT 18" ABOVE FINISHED FLOOR UNO.	⚡	— CLOCK SYSTEM SINGLE RECEPTACLE; NEMA 5-15R AT 80" ABOVE FINISHED FLOOR UNO.
⊙	— DUPLEX RECEPTACLE; NEMA 5-20R AT 18" ABOVE FINISHED GRADE OR FLOOR UNO.	⚡	— SOUND SYSTEM DEVICE; SEE SOUND SYSTEM DEVICE SCHEDULE ON DRAWINGS.
⊙	— QUADRAPLEX RECEPTACLE; NEMA 5-20R AT 18" ABOVE FINISHED GRADE OR FLOOR UNO.	⚡	— SOUND SYSTEM SPEAKER; CEILING-MOUNTED 2-Ω, 4" DEEP BOX WITH 1" CONDUIT TO ABOVE NEAREST ACCESSIBLE CEILING.
⊙	— RECEPTACLE W/WEATHERPROOF COVERPLATE; DUPLEX NEMA 5-20R 18" ABOVE FINISHED GRADE OR FLOOR UNO.	⚡	— PUSHBUTTON.
⊙	— GROUND-FAULT CIRCUIT INTERRUPTER RECEPTACLE; DUPLEX NEMA 5-20R 18" ABOVE FINISHED GRADE OR FLOOR UNO.	⚡	— ELECTRIC DOOR OPENER.
⊙	— ISOLATED GROUND RECEPTACLE; DUPLEX NEMA 5-20R AT 18" ABOVE FINISHED FLOOR UNO.	⚡	— TELEVISION OUTLET; SINGLE GANG 4" DEEP BOX AT 80" AFF WITH 1" CONDUIT TO ABOVE NEAREST CEILING AND ADJACENT NEMA 5-20R DUPLEX RECEPTACLE.
⊙	— RECEPTACLE MOUNTED n INCHES ABOVE FINISHED FLOOR OR GRADE; NEMA 5-20R UNO.	⚡	— DUCT SMOKE DETECTOR.
⊙	— SPECIAL-PURPOSE RECEPTACLE; SEE SPECIAL-PURPOSE RECEPTACLE; CONNECTION AND FLOOR BOX SCHEDULE ON DRAWING.	⚡	— CCTV CAMERA.
⊙	— HARDWARE CONNECTION OR PROVISION FOR CONNECTION; SEE SPECIAL-PURPOSE RECEPTACLE; CONNECTION AND FLOOR BOX SCHEDULE ON DRAWING.	⚡	— MOTOR SYMBOL; THE NUMBER INSIDE INDICATES HP.
⊙	— MULTIOUSET ASSEMBLY.	⚡	— COMBINATION DISCONNECT SWITCH/MOTOR STARTER.
⊙	— FLOOR-MOUNTED SINGLE RECEPTACLE; NEMA 5-20R UNO.	⚡	— NON FUSED DISCONNECT SWITCH.
⊙	— FLOOR-MOUNTED DUPLEX RECEPTACLE; NEMA 5-20R UNO.	⚡	— FUSED DISCONNECT SWITCH.
⊙	— FLOOR-MOUNTED SERVICE BOX; SEE SPECIAL PURPOSE RECEPTACLE; CONNECTION AND FLOOR BOX SCHEDULE ON DRAWING.	⚡	— LOW VOLTAGE PANEL.
⊙	— DATA SYSTEM JACK; SINGLE GANG BOX AT 18" AFF WITH 1" CONDUIT TO ABOVE NEAREST ACCESSIBLE CEILING; SUBSCRIPTED NUMBER MOUNTING HEIGHT AFF.	⚡	— HIGH VOLTAGE PANEL.
⊙	— TELEPHONE SYSTEM VOICE JACK; SINGLE GANG BOX AT 18" AFF WITH 3/4" CONDUIT TO ABOVE NEAREST ACCESSIBLE CEILING; SUBSCRIPTED NUMBER INDICATES MOUNTING HEIGHT AFF UNLESS OTHERWISE INDICATED.	⚡	— MICROPHONE RECEPTACLE.
⊙	— COMBINATION VOICE AND DATA JACK; 2-GANG BOX AT 18" AFF WITH 3/4" AND 1" CONDUITS TO ABOVE NEAREST ACCESSIBLE CEILING; SUBSCRIPTED NUMBER INDICATES MOUNTING HEIGHT AFF.	⚡	— SWITCH.
⊙	— DATA SYSTEM FIBER OPTIC JACK; SINGLE GANG BOX AT 18" AFF WITH 1" CONDUIT TO ABOVE NEAREST ACCESSIBLE CEILING; SUBSCRIPTED NUMBER MOUNTING HEIGHT AFF.	⚡	— FUSE.
⊙		⚡	— GROUND.
⊙		⚡	— OVERLOADS.
⊙		⚡	— CIRCUIT BREAKER.
⊙		⚡	— TRANSFORMER.
⊙		⚡	— AUTOMATIC TRANSFER SWITCH.
⊙		⚡	— GROUND FAULT INTERRUPTING SWITCH.

ELECTRICAL CONVENTIONS
(ALL CONVENTIONS MAY NOT APPEAR ON DRAWINGS.)

GENERAL NOTES APPLY TO ELECTRICAL DRAWING SET.
DRAWING NOTES APPLY TO DRAWING ON WHICH NOTE APPEARS.
SYMBOL NOTES APPLY TO DRAWING ON WHICH AND WHERE SYMBOL APPEARS.
WIRE SIZES ARE INDICATED BY AMERICAN WIRE GAGE OR CIRCULAR MILS.

LB-3.5 — PANELBOARD, SWITCHBOARD OR MOTOR CONTROL CENTER DESIGNATION; ARROWHEADS INDICATE NUMBER OF BRANCH CIRCUITS

— BRANCH CIRCUIT HOMERUN TO PANELBOARD, SWITCHBOARD OR MOTOR CONTROL CENTER; ARROWHEADS INDICATE NUMBER OF BRANCH CIRCUITS

— WIRE AND RACEWAY RUN CONCEALED IN WALL OR CEILING (3-#12 IN 3/4" RACEWAY UNLESS OTHERWISE NOTED)

— WIRE AND RACEWAY RUN CONCEALED IN WALL OR CEILING (3-#12 IN 3/4" RACEWAY UNLESS OTHERWISE NOTED)

— WIRE AND RACEWAY RUN CONCEALED IN OR BELOW SLAB OR BELOW GRADE (3-#12 IN 3/4" RACEWAY UNLESS OTHERWISE NOTED)

FOR LIGHTING BRANCH CIRCUITS, QUANTITY OF WIRE AND SIZE OF RACEWAY SHALL BE INCREASED AS REQUIRED TO FACILITATE INDICATED SWITCHING AND EMERGENCY LIGHTING OPERATION.

— LIGHT WEIGHT LINES INDICATE EXISTING CONDITIONS UNLESS OTHERWISE NOTED.

○ — LIGHTING FIXTURE

— LIGHTING FIXTURE DESIGNATION; SEE SCHEDULE ON THIS SHEET

2 — NUMBER OR LETTER INDICATES ELEVATION OR SECTION

E-2 — SHEET NUMBER WHERE ELEVATION OR SECTION IS TAKEN OR DRAWN

— — — CENTER LINE

— — — NUMBER OF POLES

— — — RATING OF SWITCH

— — — RATING OF FUSES OR NON-FUSIBLE

— — — NEMA ENCLOSURE TYPE.

3P/60A/NF/3R — DISCONNECT SWITCH

SITE LIGHTING FIXTURES
(REFER DRAWINGS C2-1 & C2-2)

REFER TO SPECIFICATIONS FOR ADDITIONAL INFORMATION RELATED TO LIGHT FIXTURE MANUFACTURERS AND MODEL NUMBERS, COORDINATE AND VERIFY PROPER VOLTAGES AT SHOP DRAWING SUBMITTAL AND PRIOR TO ORDERING FIXTURES.

● — STREET LIGHT - 277V.

* — WATER GARDEN POLE FIXTURE - 277V.

○ — FLOOD LIGHT - 120V.

● — PERGOLA LIGHT (2 PER COLUMN) - 277V.

◆ — PEDESTRIAN POLE FIXTURES - 277V.

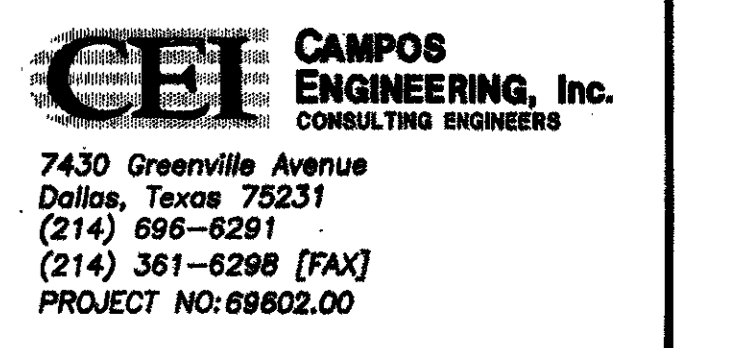
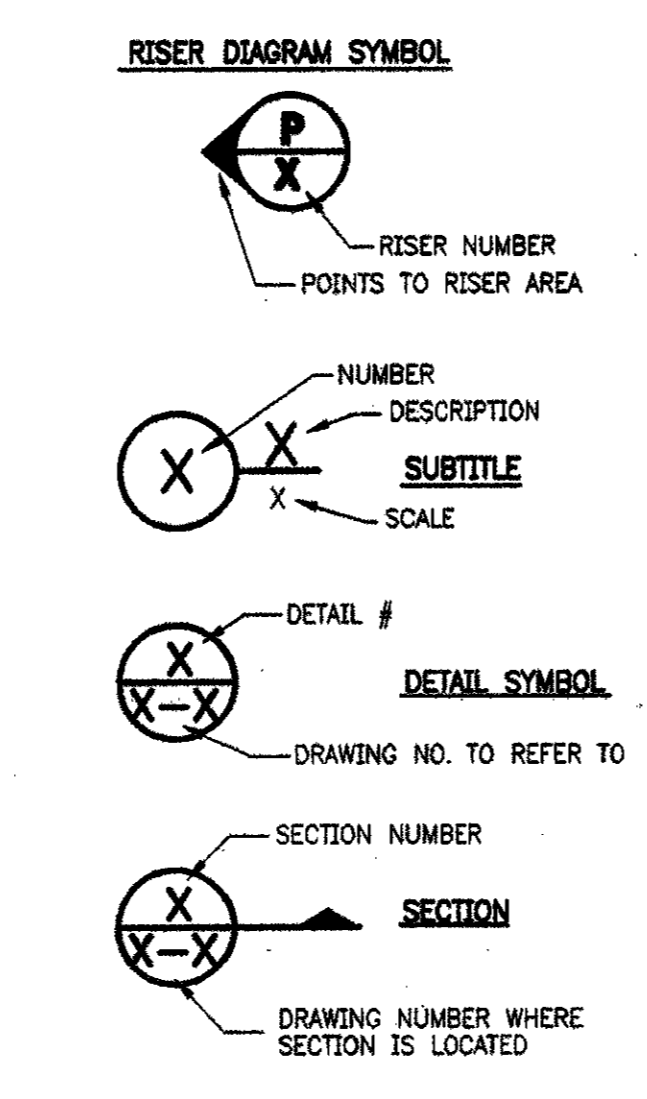
○ — DOUBLE LIGHT POLE W/ BANNERS - 277V.

■ — FOUNTAIN AND FENCE Pylon LIGHTS - 277V.

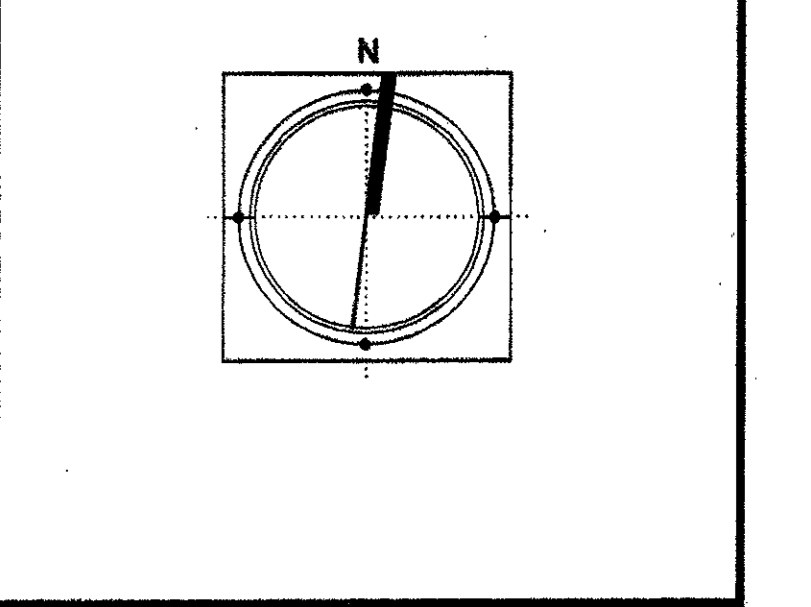
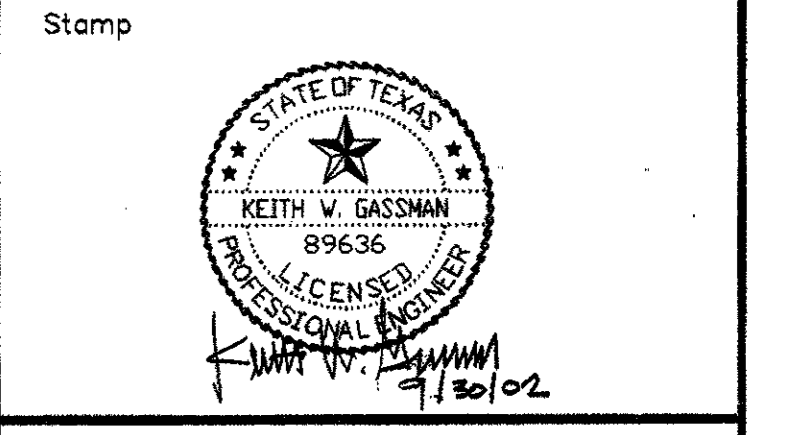
○ — GARDEN LIGHT - 277V.

◆ — STEP LIGHT - 277V.

DRAWING SYMBOLS
(ALL SYMBOLS MAY NOT APPEAR ON DRAWINGS.)



ISSUED FOR CONSTRUCTION		09-30-02
No.	Description	Date



Project Title:

ADDISON ARTS & EVENTS DISTRICT
ADDISON, TEXAS

Drawing Title:

ELECTRICAL ABBREVIATIONS & SYMBOL LEGEND

Project No. 14516.00 Scale: NONE
 Drawn By: ARM
 Checked By: KG
 Approved By: KG
 Date: 09/30/2002

Drawing No. **E0-0**