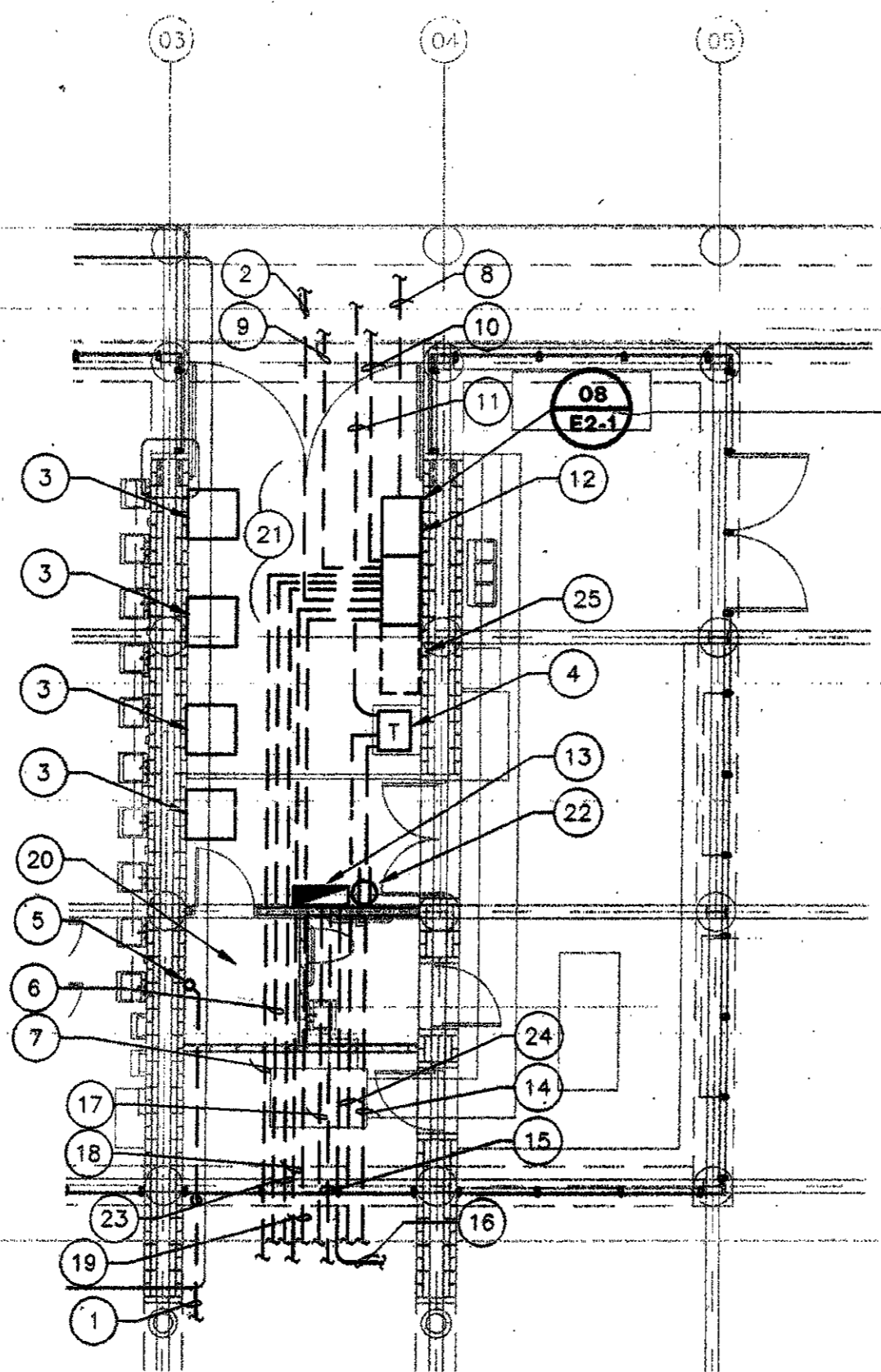


NOTES BY SYMBOL "○"

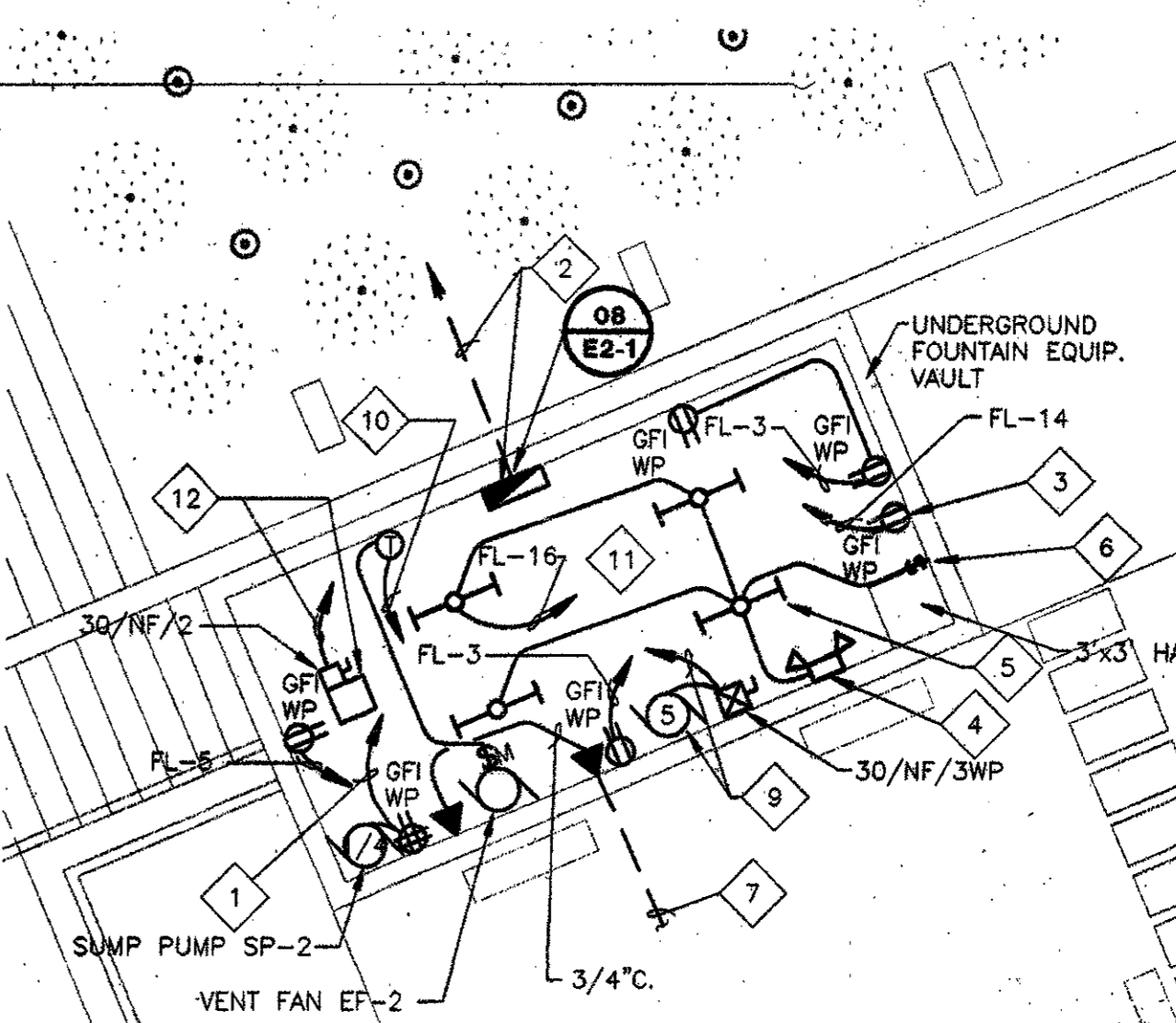
- 1 ROUTE 1" EMPTY CONDUIT FROM TELEPHONE BOARD TO FOUNTAIN VAULT FOR INSTALLATION OF IRRIGATION CONTROL SYSTEM.
- 2 TO PANEL "L3" AT PERGOLA (NORTH).
- 3 CONDENSING UNITS, NOT IN CONTRACT.
- 4 2-30KVA TRANSFORMER "T-CLP1" & "T-CLP2". 208-208/120V, 3Ø, 4W, W/ISOL. GR. (TRANSFORMER TO BE STACKED).
- 5 STUB UP AT TELEPHONE BOARD LOCATED IN THIS ROOM. COORDINATE EXACT LOCATION WITH OWNER'S REPRESENTATIVE.
- 6 TO CAMLOK PANEL #2 AT BOWL AREA.
- 7 ROUTE 2 - 3-1/2" EMPTY CONDUITS W/ PULL STRINGS UNDERGROUND TO VENDOR AREA FOR FUTURE CULTURE CTR. REFER DWG E1.2.
- 8 TO POWER COMPANY TRANSFORMER.
- 9 TO CAMLOK PANEL #1 AT PERGOLA (NORTH).
- 10 TO STATUE DISCONNECT SWITCH.
- 11 TO CAMLOK PANEL #1 AT PERGOLA (NORTH)(IG).
- 12 DIST. PANEL "DPL2".
- 13 PANEL "L4".
- 14 TO CAMLOK PANEL #2 AT BOWL AREA (IG).
- 15 TO FOUNTAIN VAULT FOR RECEPT.
- 16 ROUTE 1" EMPTY CONDUIT TO TREE GROVE AREA. REF. DWG. E1.2.
- 17 TO DISCONNECT AT FOUNTAIN VAULT.
- 18 TO PANEL "L2" AT BOWL AREA.
- 19 ROUTE 2-2" & 2-1" EMPTY CONDUIT W/ PULL STRINGS UNDERGROUND TO VENDOR AREA FOR FUTURE USE. REF. DWG. E1.2.
- 20 PAVILION ELECTRICAL ROOM.
- 21 REFER SINGLE LINE DIAGRAM DRAWING E2-2 DETAIL 01 FOR EQUIPMENT WITHIN THIS AREA.
- 22 MOUNT ONE (1) 20A. WP/GFI RECEPTACLE BELOW PANEL "L4". L4-26 3Ø12, 1Ø12G. - 3/4"C.
- 23 TO IRRIGATION PUMP AT FOUNTAIN VAULT.
- 24 TO VENTILATION FAN AT FOUNTAIN VAULT.
- 25 PROVIDE SPACE FOR FUTURE EQUIPMENT.



02 ELECTRICAL AREA AT PAVILION AREA
E2-2 1/8"=1'-0"

NOTES BY SYMBOL "◇"

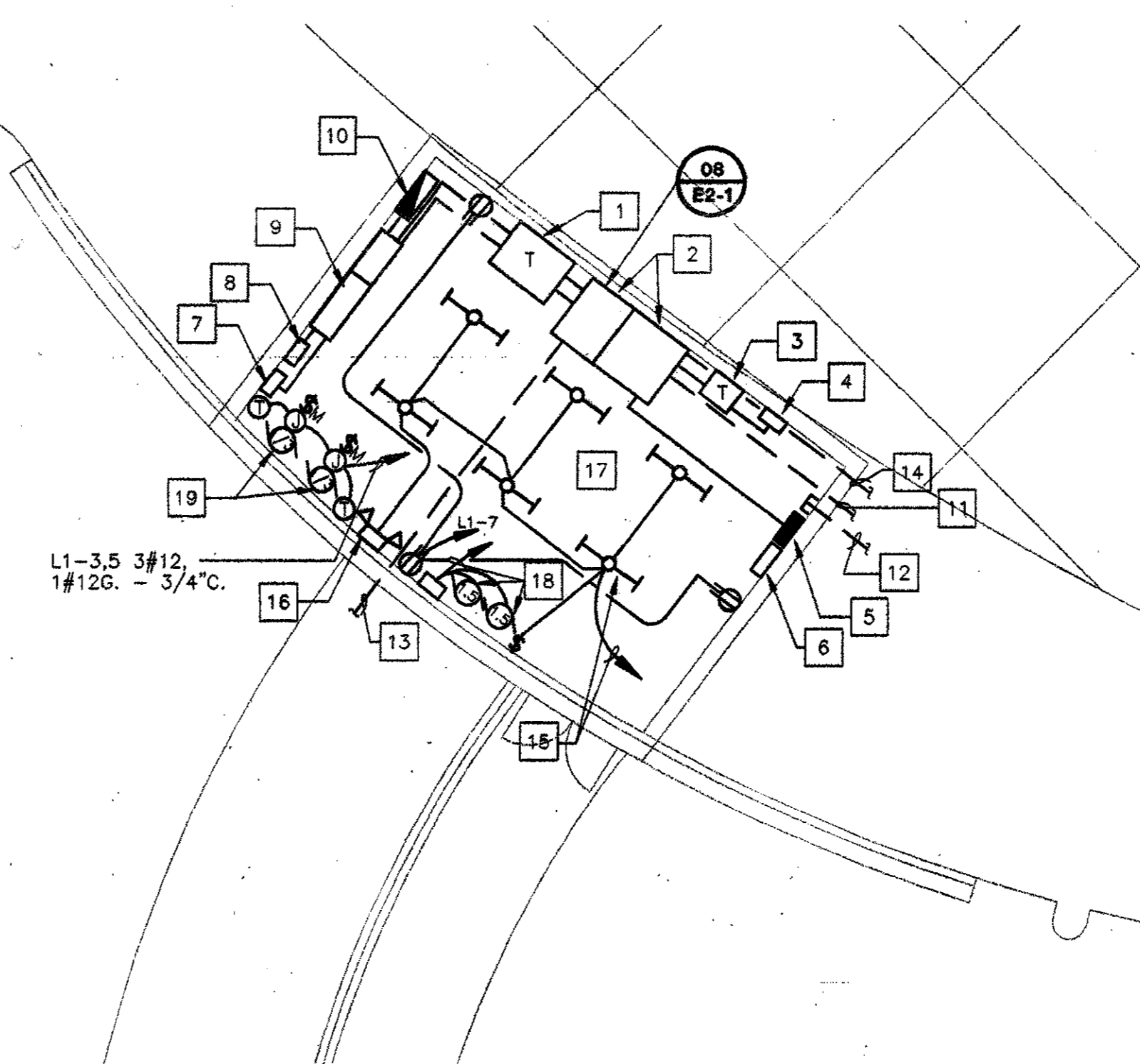
- 1 SUMP PUMP SP-2, 120V, 1/2HP, FL-9 2Ø12, 1Ø12G.-3/4"C. WIRE ALL FLOAT SWITCHES, HIGH WATER ALARM, TRAP PRIMER AND ASSOCIATED CONTROLS.
- 2 PANEL "FL". REFER TO SINGLE LINE DIAGRAM DETAIL 01 ON DRAWING E2-1.
- 3 120V, 20A. WP/GFI RECEPTACLE FOR SELF CONTAINED EYE WASH HEATER (100W.).
- 4 EMERGENCY BATTERY LIGHT. WIRE AHEAD OF LIGHT SWITCH FL-16. LITHONIA #8ELM2-N-DL (OR EQUAL).
- 5 FLUORESCENT LIGHT FIXTURES LITHONIA #C232120AL-WG WITH WIREGUARDS (OR EQUAL), TYPICAL OF FOUR (4) FIXTURES. COORDINATE EXACT LOCATIONS OF LIGHT FIXTURES WITH ALL EQUIPMENT LOCATED WITHIN FOUNTAIN VAULT PRIOR TO ROUGH-IN.
- 6 ELECTROMECHANICAL SPRING WOUND INTERVAL TIME SWITCH WITH TWELVE HOUR TIME, TORK #A512H. PROVIDE 1HP MOTOR RATED CONTACTS.
- 7 ROUTE 1" EMPTY CONDUIT WITH PULL STRING TO TELEPHONE BOARD LOCATED IN PAVILION ELECTRICAL ROOM.
- 8 RECEPTACLE FOR IRRIGATION CONTROLLER. COORDINATE EXACT LOCATION PRIOR TO ROUGH-IN.
- 9 IRRIGATION PUMP, 5HP 208V, 3Ø, FL-8,10,12 3Ø10, 1Ø10G.-1"C.
- 10 VENTILATION FAN EF-2, 1/3HP, 120V, 1Ø, FL-7, 2Ø12, 1Ø12G.-3/4"C. WIRE TWO SPEED LINE VOLTAGE THERMOSTAT AND PROVIDE MANUAL OVERRIDE SWITCH TO BY-PASS THERMOSTAT CONTROL WITH TWELVE (12) HOUR TIMER. TORK #A512H. PROVIDE 1HP MOTOR RATED CONTACTS.
- 11 EQUIPMENT LOCATIONS WITHIN THE VAULT ARE SUBJECT TO CHANGE. COORDINATE ALL FINAL EQUIPMENT LOCATIONS PRIOR TO ROUGH-IN.
- 12 UNIT HEATER UH-1, 2.2KW, 208V, 1Ø, FL-11,13 2Ø10, 1Ø12G.-3/4"C.



01 UNDERGROUND FOUNTAIN VAULT
E2-2 1/8"=1'-0"

NOTES BY SYMBOL "□"

- 1 500 KVA TRANSFORMER "T-DPL1". REFER ONE LINE DIAGRAM DETAIL 02 ON DRAWING E2-1 FOR ADDITIONAL INFORMATION.
- 2 MAIN DIST. PANEL "DPH1". REFER ONE LINE DIAGRAM DETAIL 02 ON DRAWING E2-1 AND DRAWING 3-1 FOR ADDITIONAL INFORMATION.
- 3 75 KVA ISOLATION TRANSFORMER "T-CLS" (IG). REFER ONE LINE DIAGRAM DETAIL 02 ON DRAWING E2-1 FOR ADDITIONAL INFORMATION.
- 4 CAMLOK PANEL #5 (200A, IG). REFER DETAIL 05 ON DRAWING E2-1 FOR ADDITIONAL INFORMATION.
- 5 PANEL "H1". REFER ONE LINE DIAGRAM 02 ON DRAWING E2-1 AND DRAWING 3-1 FOR ADDITIONAL INFORMATION.
- 6 LIGHTING CONTROL PANEL.
- 7 CAMLOK PANEL #3 (200A) REFER DETAIL 05 ON DRAWING E2-1 FOR ADDITIONAL INFORMATION.
- 8 CAMLOK PANEL #4 (200A) REFER DETAIL 05 DRAWING E2-1 FOR ADDITIONAL INFORMATION.
- 9 DISTRIBUTION PANEL "DPL1". REFER ONE LINE DIAGRAM 02 ON DRAWING E2-1 AND DRAWING 3-1 FOR ADDITIONAL INFORMATION.
- 10 PANEL "L1". REFER ONE LINE DIAGRAM 02 ON DRAWING E2-1 AND DRAWING 3-1 FOR ADDITIONAL INFORMATION.
- 11 TO SITE PANEL "L5" AT PERGOLA.
- 12 STUB 1" SPARE CONDUITS AT THIS LOCATION. REFER TO DRAWINGS E1-1 AND E1-2 FOR EXACT QUANTITIES.
- 13 TO UTILITY CO. TRANSFORMER.
- 14 TO SITE PANEL "H2" AT BOWL.
- 15 FLUORESCENT LIGHT FIXTURES, LITHONIA #C232-277AL-WG (OR EQUAL) WITH WIRE GUARD. TYPICAL FOR SIX (6) FIXTURES. H1-7 2Ø12, 1Ø12G. - 3/4"C.
- 16 EMERGENCY BATTERY LIGHT, WIRE AHEAD OF LIGHT SWITCH H1-7. LITHONIA #8ELM2-N-DL (OR EQUAL).
- 17 REFER TO ONE LINE DIAGRAM DETAIL 02 ON DRAWING E2-1 FOR EQUIPMENT IN THIS AREA.
- 18 DUPLEX SUMP "SP-1A" AND "SP-1B". PROVIDE WIRING OF PUMP MOTORS, FLOAT SWITCHES (4) AND ASSOCIATED CONTROLS. REFER TO ONE LINE DIAGRAM DETAIL 02 ON DRAWING E2-1.
- 19 EXHAUST FANS "EF-1A" AND "EF-1B". 120V, 1/3 HP EACH. WIRE LINE VOLTAGE THERMOSTATS. TYPICAL FOR TWO (2) FANS.



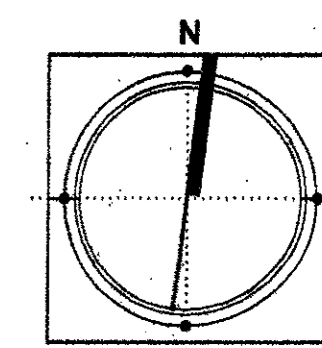
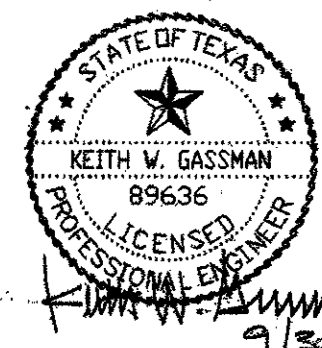
03 ELECTRICAL ROOM PLAN AT MAIN STAGE
E2-2 1/8"=1'-0"

ISSUED FOR CONSTRUCTION 09-30-02

No.	Description	Date

DWG ISSUE & REVISION HISTORY

Stamp



Project Title:
ADDISON ARTS & EVENTS DISTRICT
ADDISON, TEXAS

Drawing Title:
ELECTRICAL LARGE SCALE PLANS

Project No. 14516.00 Scale: NONE
Drawn By: ARM
Checked By: KG
Approved By: KG
Date: 09/30/02

Drawing No. **E2-2**