

ADDISON CIRCLE ARTS (D)
 WATER GARDEN
 EQUIPMENT LIST

| SYM | DETAIL | ITEM DESCRIPTION | QTY |
|-----|--------|--|-----|
| 1 | A-F1-4 | GFCO SELECT #E1105-05 STREAM JET 3/8" ORIF. SIZE, 1/2" FEMALE NPT. CONN., 10" ADJ. | 48 |
| 2 | B-F1-4 | GFCO SELECT #E1100-1 SURFACE SHOWER, 1-1/2" N.P.S. FEMALE CONNECTION. | 4 |
| 3 | C-F1-4 | GFCO SELECT #E1101 VACUUM FITTING, 2" N.P.S. FEMALE CONNECTION. | 9 |
| 4 | D-F1-4 | GFCO SELECT #E1102 EYEBALL FITTING, 1" ORIFICE SIZE, 2" N.P.S. FEMALE CONNECTION. | 5 |
| 5 | X | X | - |
| 6 | F-F1-4 | GFCO SELECT #E1104-4 MAIN POOL DRAIN, 4" FEMALE NPT. CONNECTION. | 5 |
| 7 | G-F1-4 | GFCO SELECT #E1105-4 WALL NICHE ADJUSTABLE OVERFLOW, 4" MALE CONNECTION. | 2 |
| 8 | H-F1-4 | GFCO SELECT #E1107 SLUMP FOR BALLAST POOLS, 2" NPT. FEM. BOTTOM AND SIDE CONNECTIONS. | 3 |
| 9 | J-F1-4 | GFCO SELECT #E1108-8-28 SLUMP, 8" AND 2" BOTTOM CONNECTION, 24" X 24" STAINLESS STEEL ANTI-VORTEX PLATE. | 2 |
| 10 | H-F1-4 | GFCO SELECT #E1108-12 5Q. ANTI-VORTEX PLATE, 12" X 12" STAINLESS STEEL ANTI-VORTEX PLATE. | 3 |
| 11 | K-F1-4 | GFCO SELECT #E1109-07P SLAB PENETRATION, 3/4" DIA. X 18" LONG DR. 80 PVC PIPE W/ PVC WATERSTOP FLANGE. | 24 |
| 12 | L-F1-4 | GFCO SELECT #E1109-20 SLAB PENETRATION, 2" DIA. X 18" LONG DR. TUBE W/ BRSS. WATERSTOP FLANGE. | 3 |
| 13 | M-F1-4 | GFCO SELECT #E114A ANEMOMETER, 3/4" FEMALE NPT. CONNECTION. (SEE C5-1 FOR LOCATION) | 1 |
| 14 | N-F1-4 | GFCO SELECT #E1318 DUAL WATER LEVEL SENSOR, 3/4" NPT. BTM. CONNECTION. | 1 |
| 15 | X | X | - |
| 16 | X | GFCO #SK115 PUMPING SKID, 2'-0" X 4'-0" PAD, FACTORY TESTED AND PREASSEMBLED. | 1 |
| 17 | X | GFCO SELECT #F1212-15 DISPLAY PUMP, 15 HP, 650 GPM AT 80 FH, 208 V, 3P, 1750 RPM, 60 HZ. | 1 |
| 18 | X | GFCO #SK103-100 PUMPING SKID, 4'-0" X 8'-0" PAD, FACTORY TESTED AND PREASSEMBLED. | 1 |
| 19 | X | GFCO SELECT #F1112 FILTER PUMP, 3 HP., 35 GPM AT 50 FTL, 208V., 3P, 3450 RPM, 60HZ. | 1 |
| 20 | X | GFCO SELECT #F1900-150 CARTRIDGE FILTER ASSEMBLY, 150 SQ. FT. FILTER W/ 150 SQ. FT. REPLACEMENT FILTER. | 1 |
| 21 | X | GFCO #F1800-155P WATER CONTROL MANIFOLD, AUTOMATIC FILL/LEVEL CONTROL MANIFOLD, WITH P.R.V. | 1 |
| 22 | X | GFCO SELECT #F1725 BROWNIATOR WITH FLOW INDICATOR, 1-1/2" NPT. CONNECTION. | 1 |
| 23 | X | GFCO SELECT #F1750P/DRP ERSON CONTROLLER, 150V AC. | 1 |
| 24 | X | GFCO CUSTOM CONTROL PANEL, NEMA 3R, STEEL ENCL., 120/208V AC, 3P RATED AT 225 AMP. | 1 |
| 25 | X | ABB #ACS401-600-30/3 VARIABLE FREQUENCY DRIVE, 15 HP PUMP | 1 |
| 26 | X | X | - |
| 27 | A-F1-4 | GFCO CUSTOM STREAM JET SLEEVE CAN, 1/2" NPT. FEM. BOTTOM CONN., 3/4" NPT. FEM. BOTTOM DRAIN CONN. | 48 |
| 28 | X | GFCO SELECT LIGHTING TRANSFORMER, 5 KVA, 120 PRN., 16/32 SEC. | 1 |
| 29 | E-F1-4 | GFCO SELECT EE138-4 DECK BOX (4) 3/4" NPT, 5/8" CONNECTION, (1) NPT. SIDE CONDUIT CONNECTION. | 6 |
| 30 | E-F1-4 | GFCO SELECT EE138-3 DECK BOX (3) 3/4" NPT, 5/8" CONNECTION, (1) NPT. SIDE CONDUIT CONNECTION. | 3 |
| 31 | E-F1-4 | GFCO SELECT EE138-2 DECK BOX (2) 3/4" NPT, 5/8" CONNECTION, (1) NPT. SIDE CONDUIT CONNECTION. | 6 |
| 32 | X | X | - |
| 33 | E-F1-4 | GFCO SELECT EE137-4 JUNCTION BOX CORO SEALS, 1/2" CONDUIT X 3/4" BOX ENTRY CONN., ULL LISTED. | 45 |
| 34 | X | UPPER CHANNEL LIGHTS BY DESIGNATED CONTRACTOR (75W, 120V) | 33 |
| 35 | X | LOWER CHANNEL LIGHTS BY DESIGNATED CONTRACTOR (300W, 120V) | 12 |
| 36 | X | X | - |
| 37 | X | GFCO SELECT LIGHTING PANEL, 240/120V, 2 POLE-N W/ 225 AMP MAIN BREAKER, 12 SPACE, 225 AMP BUSS. | 1 |
| 38 | X | PHYLON LIGHTS BY DESIGNATED CONTRACTOR (300W, 120V) | 6 |

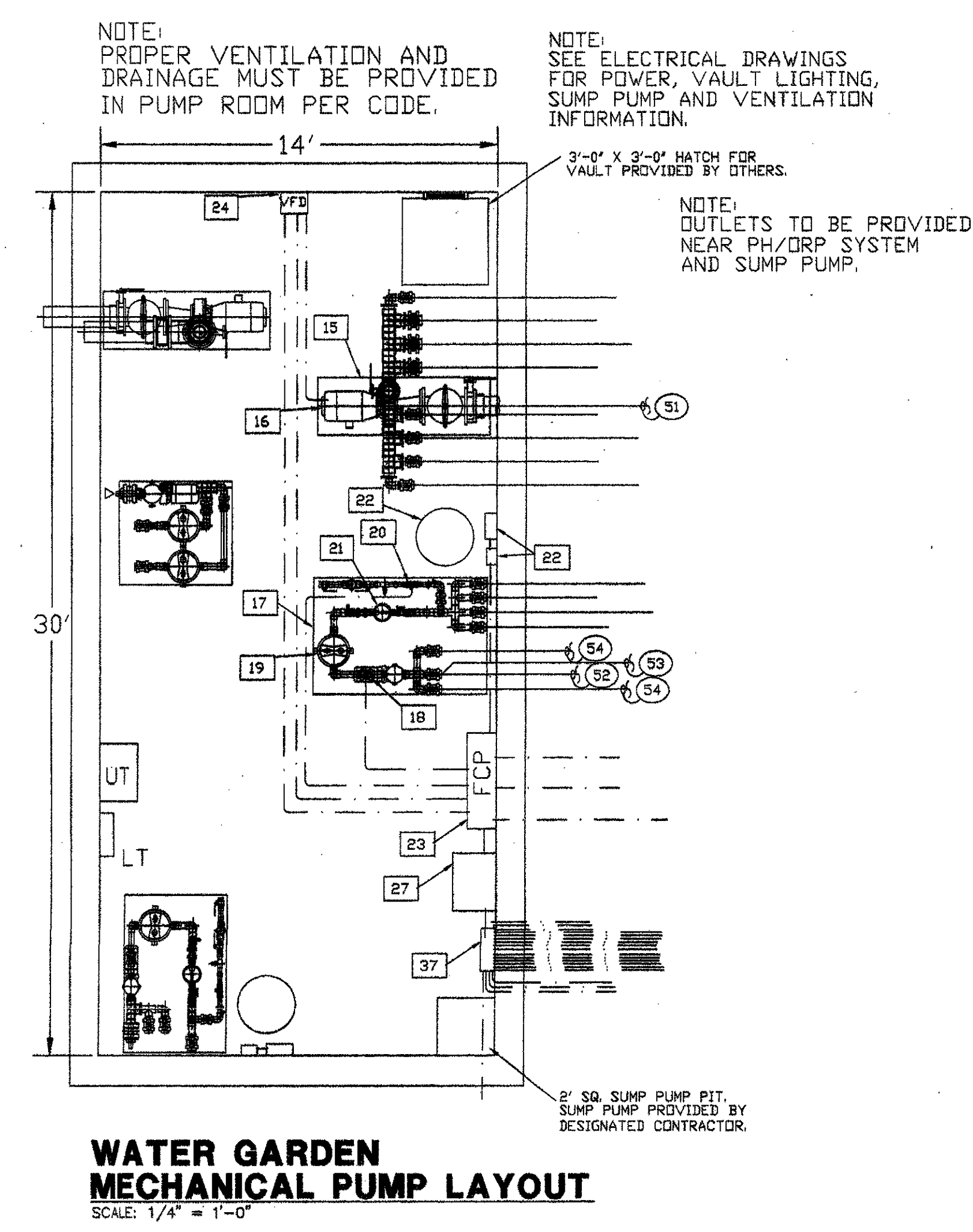
PIPING

| | | |
|----|--|----|
| 50 | 1 1/2" INCOMING SUPPLY WATER LINE (50 PSI MAXIMUM) | 1 |
| 51 | 8" DISPLAY PUMP SUCTION | 1 |
| 52 | 2" FILTER PUMP SUCTION | 1 |
| 53 | 2" FILTER PUMP SUCTION FROM SURFACE SKIMMERS | 1 |
| 54 | 2" FILTER PUMP SUCTION FROM VACUUM FITTINGS | 2 |
| 55 | 2" DISCHARGE TO STREAM JETS | 2 |
| 56 | 2" DISCHARGE TO STREAM JETS | 1 |
| 57 | 2" DISCHARGE TO STAINLESS STEEL TROUGH (BY OTHERS) | 3 |
| 58 | 3" BALLAST DISCHARGE TO SUMP | 1 |
| 59 | 2" FILL/FILTER RETURN TO EYEBALL FITTINGS | 1 |
| 60 | 2" MAIN DRAIN LINE TO SUMP (SEE DRAWING C4-2) | 4 |
| 61 | 4" OVERFLOW DRAIN LINE TO MAIN DRAIN LINE | 2 |
| 62 | 4" POOL DRAIN LINE TO MAIN DRAIN LINE | 5 |
| 63 | X | - |
| 64 | X | - |
| 65 | 3/4" DRAIN LINE FROM STAINLESS STEEL JET CAN TO POOL | 24 |

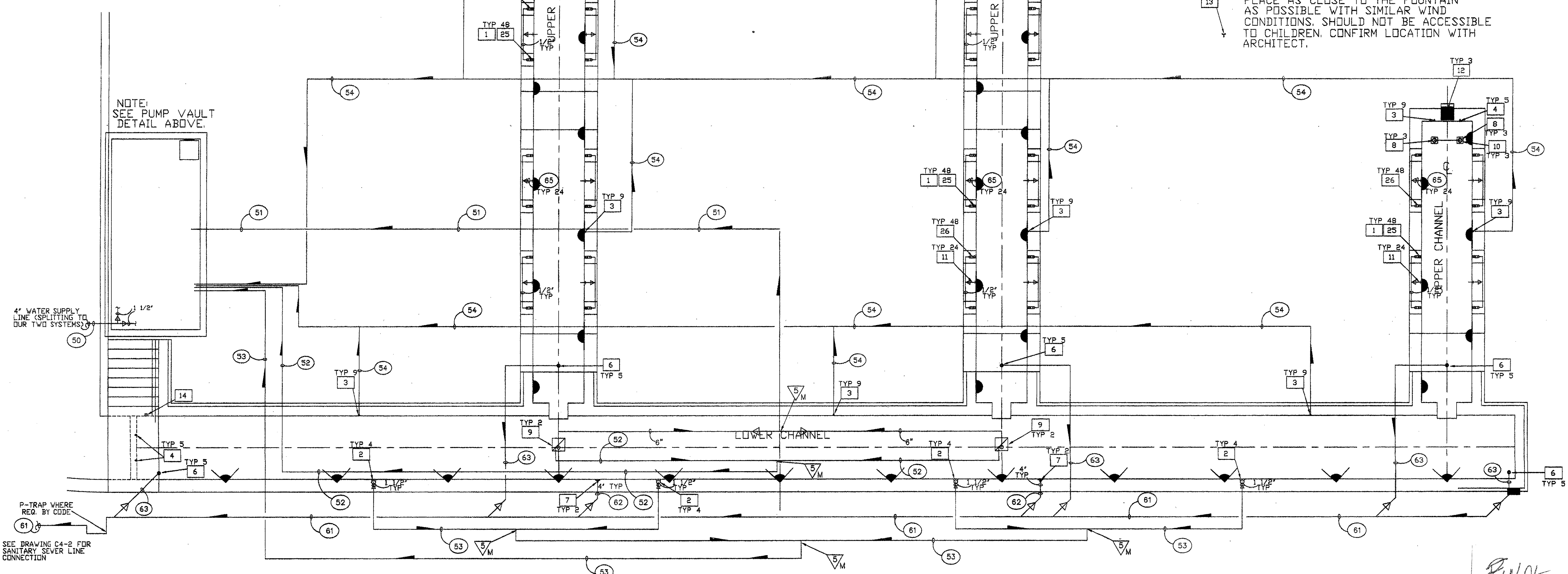
CONDUITS

| | | |
|----|---|----|
| 70 | 2 1/2" INCOMING POWER 120/208V 3P 225A (4P/0+1#30) | 1 |
| 71 | 1" CONDUIT FROM CONTROL PANEL TO VFD FOR 15HP DISPLAY PUMP (3P/4+1#30) (VA VFD) | 1 |
| 72 | 1/2" CONDUIT FROM CONTROL PANEL TO 3HP FILTER PUMP (3P/1+1#30) | 1 |
| 73 | 1/2" CONDUIT FROM CONTROL PANEL TO FILL VALVE (2P/1+1#140) | 1 |
| 74 | 3/4" CONDUIT FROM CONTROL PANEL TO WATER LEVEL SENSOR (2P/1+1#150) | 1 |
| 75 | 1/2" CONDUIT FROM CONTROL PANEL TO ANEMOMETER (1 PAIR #18 CABLE) | 1 |
| 76 | 3/4" CONDUIT FROM LIGHTING PANEL TO DECK BOX (LIGHTS 4 X 75W 120V) (4P/10+1#100) | 8 |
| 77 | 3/4" CONDUIT FROM LIGHTING PANEL TO DECK BOX (LIGHTS 3 X 75W 120V) (2P/10+1#100) | 3 |
| 78 | 3/4" CONDUIT FROM CONTROL PANEL TO DECK BOX (LIGHTS 2 X 300W 120V) (2P/12+1#120) | 8 |
| 79 | 3/4" CONDUIT FROM CONTROL PANEL TO PH/DRP ERSON CONTROLLER (2 X 300W) (2P/12+1#120) | 3 |
| 80 | 1/2" CONDUIT FROM CONTROL PANEL TO PH/DRP ERSON CONTROLLER (2P/1+1#140) | 1 |
| 81 | 1" CONDUIT FROM VFD TO 15 HP PUMP (3P/4+1#30) | 1 |
| 82 | 1" CONDUIT FROM CONTROL PANEL TO 5 KVA TRANSFORMER (16/32 VAC) (3P/4+1#30) | 1 |
| 83 | 2" CONDUIT FROM 5 KVA TRANSFORMER TO LIGHTING PANEL (3P/4+0+1#30) | 1 |
| 84 | 3/4" CONDUIT FROM LIGHT FIXTURE TO DECK BOX (LIGHT CABLE) | 45 |
| 85 | 1/2" CONDUIT FROM CONTROL PANEL TO VFD (2P/1+1#150) | 1 |

SUCTION & DRAIN PLAN VIEW
 SCALE: 1/8" = 1'-0"



WATER GARDEN MECHANICAL PUMP LAYOUT
 SCALE: 1/4" = 1'-0"



FINAL REVIEW

| | | |
|--|-------------|------|
| ISSUED FOR CONSTRUCTION | 09-30-02 | |
| No. | Description | Date |
| DWG ISSUE & REVISION HISTORY | | |
| Stamp | | |
| | | |
| | | |
| Project Title: | | |
| ADDISON ARTS & EVENTS DISTRICT | | |
| ADDISON, TEXAS | | |
| Drawing Title: | | |
| WATER GARDEN SUCTION & DRAIN PLAN | | |
| Project No. 14516.00 Scale: AS NOTED | | |
| Drawn By: | | |
| Checked By: | | |
| Approved By: | | |
| Date: September 30, 2002 | | |
| Drawing No. | | |
| F1-2 | | |