

IRRIGATION LEGEND

- WATER GEAR DRIVEN ROTOR MODEL 1-20, NOZZEL # 7 PART CIRCLE
- WATER GEAR DRIVEN ROTOR MODEL 1-20, NOZZEL # 8 FULL CIRCLE
- TORO POP-UP LOW ANGLE SPRAY MPR SERIES NO. 12, FULL, HALF, & QUARTER ON A NO. 3702 4" BODY.
- ▲ TORO POP-UP LOW ANGLE SPRAY MPR SERIES NO. 8, FULL, HALF, & QUARTER ON A NO. 3702 12" BODY.
- TORO POP-UP LANN SPRAY MPR SERIES NO. 19, PG. FULL, HALF, & QUARTER ON A NO. 3702 4" BODY.
- ⊗ HEATHERMATIC QUICK COUPLER VALVE #V44L
- ⊙ HEATHERMATIC 11000 CR SERIES WITH FLOW CONTROL ELECTRIC REMOTE CONTROL VALVE
- SCHEDULE 40 PVC MAINLINE
- GLASS 200 PVC LATERAL LINE EXCEPT 1/2 INCH DIAMETER SHALL BE GLASS 200. NOTE: ALL DIRECTLY BURIED LINE BENEATH PAVING SHALL BE SCHEDULE 40 PVC
- ⊕ BFM THROUGH VALVE
- ⊕ VALVE SEQUENCING NUMBER
- ⊕ SIZE OF VALVE
- ⊕ MANUAL GATE VALVE-LINE SIZE
- ⊕ ELECTRIC CONTROLLER MANUFACTURE AND MODEL AS SHOWN ON PLAN
- ⊕ 6" SCHEDULE 40 PVC SLEEVE
- ⊕ GALVANIZED STEEL SLEEVE(SIZE AS NOTED)
- ⊕ FREEZE SENSOR-MINI-CLIK MODEL 401
- ⊕ MOISTURE SENSOR-MEM
- ⊕ IRRIGATION WATER METER & TAPPING SLEEVE (BY GENERAL CONTRACTOR)
- ⊕ FERCO DOUBLE CHECK VALVE BODY IN PLUSH CONCRETE VALVE BOX(BELOW GRADE)

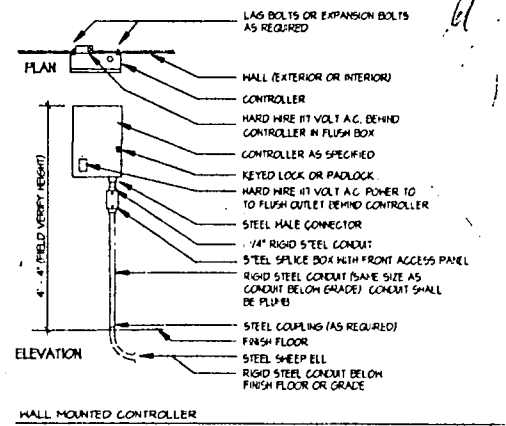
IRRIGATION NOTES

1. LINE LAYOUT IS DIAGRAMMATIC-ADJUST HEAD AND LINE LOCATIONS ON SITE TO ACCOMMODATE EXISTING JOB CONDITIONS AND TO ACHIEVE COMPLETE COVERAGE
2. ALL MAIN LINE PIPING SHALL BE BURIED TO HAVE A MINIMUM COVER OF 18". ALL LATERAL PIPING DOWNSTREAM OF THE MAIN LINE SHALL BURIED TO HAVE A MINIMUM COVER OF 12"
3. ALL MAINS ARE TO DRAIN TO LOW POINTS AT A MINIMUM ONE HALF(1/2%) PERCENT SLOPE. AT LOW POINTS, INSTALL GATE VALVE TO FACILITATE DRAINAGE OF SYSTEM DURING FREEZING TEMPERATURES
4. CONTRACTOR SHALL INSTALL AUTOMATIC DRAIN VALVES AT LOW POINTS IN THE IRRIGATION LINES AS REQUIRED TO PREVENT FREEZE DAMAGE
5. ALL VALVE BOXES SHALL BE BLACK IN COLOR(BODY AND LID). SIZES SHALL BE TEN(10) INCHES BY FOURTEEN(14) INCHES (RECTANGULAR) FOR REMOTE CONTROL VALVES AND NINE(9) INCHES(ROUND) FOR GATE AND QUICK COUPLER VALVES
6. CONTRACTOR SHALL MAKE MINOR ADJUSTMENTS TO SYSTEM LAYOUT IN FIELD TO INSURE POSITIVE DRAINAGE OF LATERAL LINES AND MAIN LINES
7. CONTRACTOR SHALL NOTIFY THE LANDSCAPE ARCHITECT, IF THE STATIC PRESSURE IS LESS THAN THE DESIGN STATIC PRESSURE OF 80 PSI.
8. ALL WIRING FROM THE IRRIGATION CONTROLLER TO THE REMOTE CONTROL VALVES SHALL BE UP-40 DIRECT BURIAL CABLE. ALL WIRE SPLICES SHALL BE MADE IN VALVE BOXES ONLY USING SANDWICH SHIRT-TIE CONNECTORS AND SEALANT. PROVIDE SLEEVES FOR WIRE UNDER PAVED AREAS AS REQUIRED
9. ALL IRRIGATION INSTALLATION SHALL CONFORM TO THE LOCAL CODES AND REGULATIONS

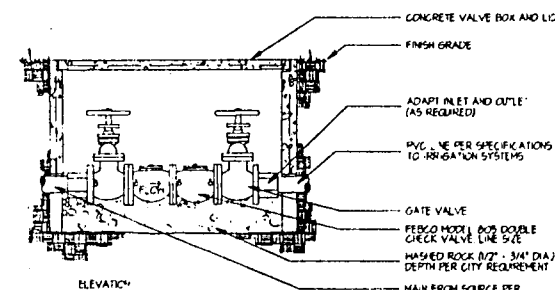
TOWN OF ADDISON IRRIGATION NOTES

1. PLACE 4 EXTRA 14 GA WIRES (DIFFERENT COLORS) FROM CONTROLLER TO A VALVE BOX ADJACENT TO DOUBLE CHECK VALVE ASSEMBLY FOR CENTRAL CONTROL INSTALLATION AT A LATER DATE(VERIFY WITH THE TOWN OF ADDISON'S REPRESENTATIVE)
2. USE CLEAN AND APPROVED LOAM TO BACKFILL ALL PIPE TO A DEPTH OF AT LEAST 6" ABOVE TOP OF PIPE. ALL HEADS AND BOXES ARE TO BE BACKFILLED TO GRADE WITH LOAM. REMAINDER OF TRENCH MAY BE FILLED USING CLEAN AND APPROVED SOIL. NO ROCKS GREATER THAN 1" ARE ALLOWED. COMPACT TRENCHES TO ALLEVIATE SETTLING
3. USE APPROPRIATE AND APPROVED PVC SOLVENT. AVOID EXCESSIVE USE AND Wipe ALL JOINTS AND FITTINGS CLEAN
4. THE INSTALLER IS RESPONSIBLE FOR RESETTING HEAD AND BOX HEIGHT DUE TO SETTLING. CONTRACTOR MUST OBTAIN A WORKMANSHIP WARRANTY FOR ONE (1) YEAR FROM DATE OF COMPLETION
5. ALL WORK IS TO BE ACCOMPLISHED BY OR DIRECTLY SUPERVISED BY AN ON-SITE IRRIGATOR LICENSED BY THE STATE OF TEXAS
6. PRIOR TO ANY BACKFILLING OF TRENCHES, AN INSPECTION BY THE TOWN OF ADDISON'S REPRESENTATIVE MUST TAKE PLACE AND IMPLEMENT ANY NECESSARY CHANGES

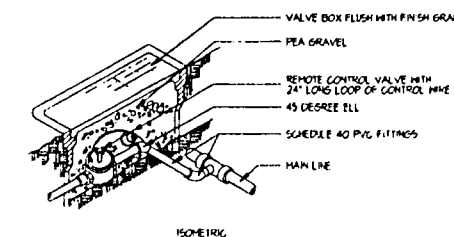
IRRIGATION DETAILS



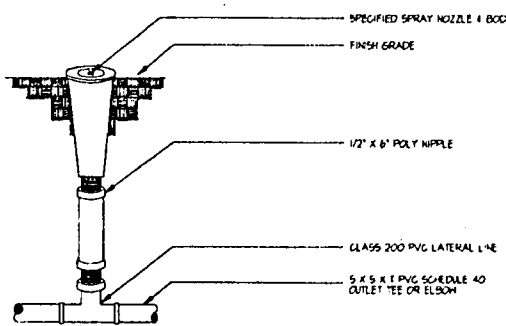
HALL MOUNTED CONTROLLER NOT TO SCALE



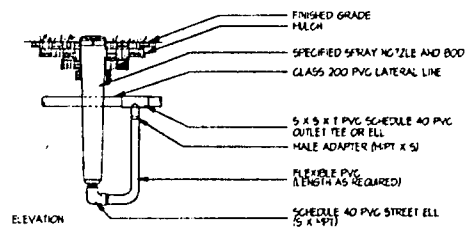
BACKFLOW PREVENTER NOT TO SCALE



REMOTE CONTROL VALVE NOT TO SCALE



POP-UP RISER ASSEMBLY NOT TO SCALE



HIGH RISER ASSEMBLY NOT TO SCALE

Issued for Construction
March 28, 1996

Newman, Jackson, Bieberstein, Inc.						
Landscape Architecture			Urban and Development Planning			
12710 Galt Road, Suite 210 Dallas, Texas (214) 255-2035 Fax (214) 255-2032						
Details						
ADDISON CIRCLE						
PHASE I						
TOWN OF ADDISON, TEXAS						
Hutt-Zollars, Inc./Engineering/Architecture						
Dallas Fort Worth Houston El Paso Phoenix Tucson Ontario San Clemente						
DESIGN	DRAWN	APPR.	SCALE	DATE	PROJECT NO.	NO.
PS	TS	GN		12-4-95	0030-95	137
						137