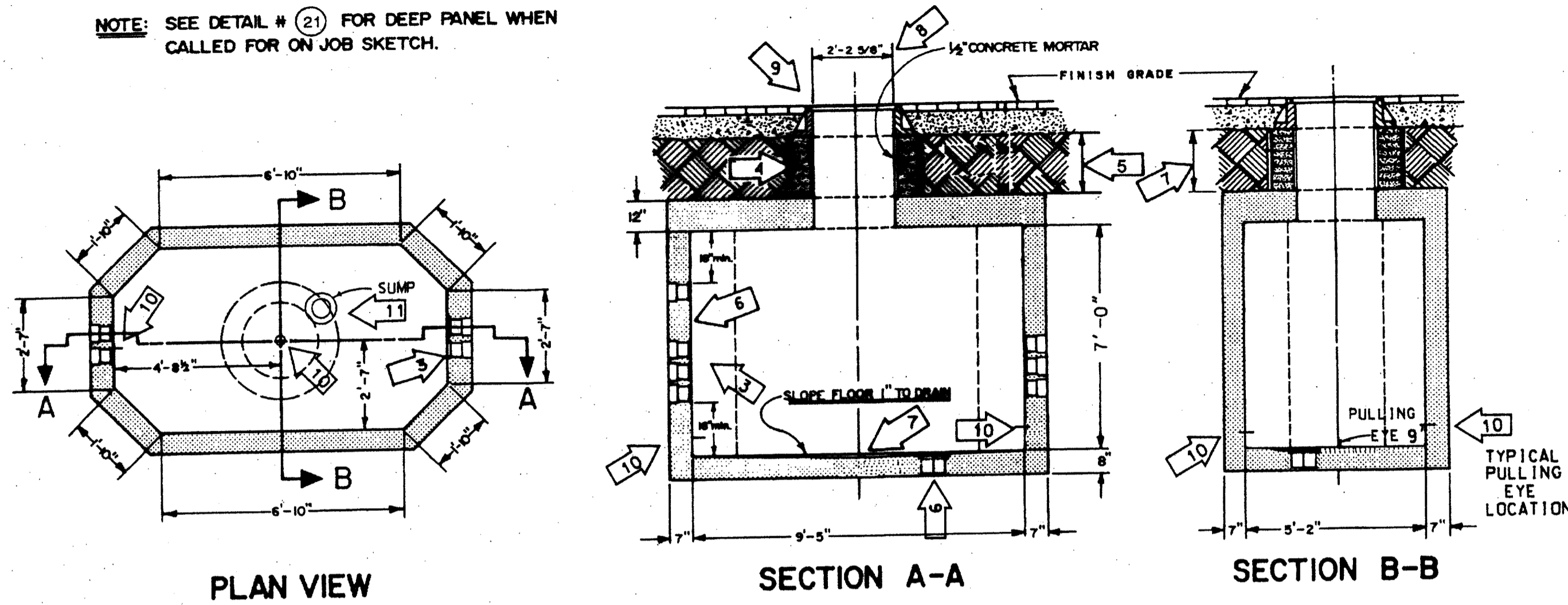


— TYPE "B" MANHOLE —

DETAIL # ①

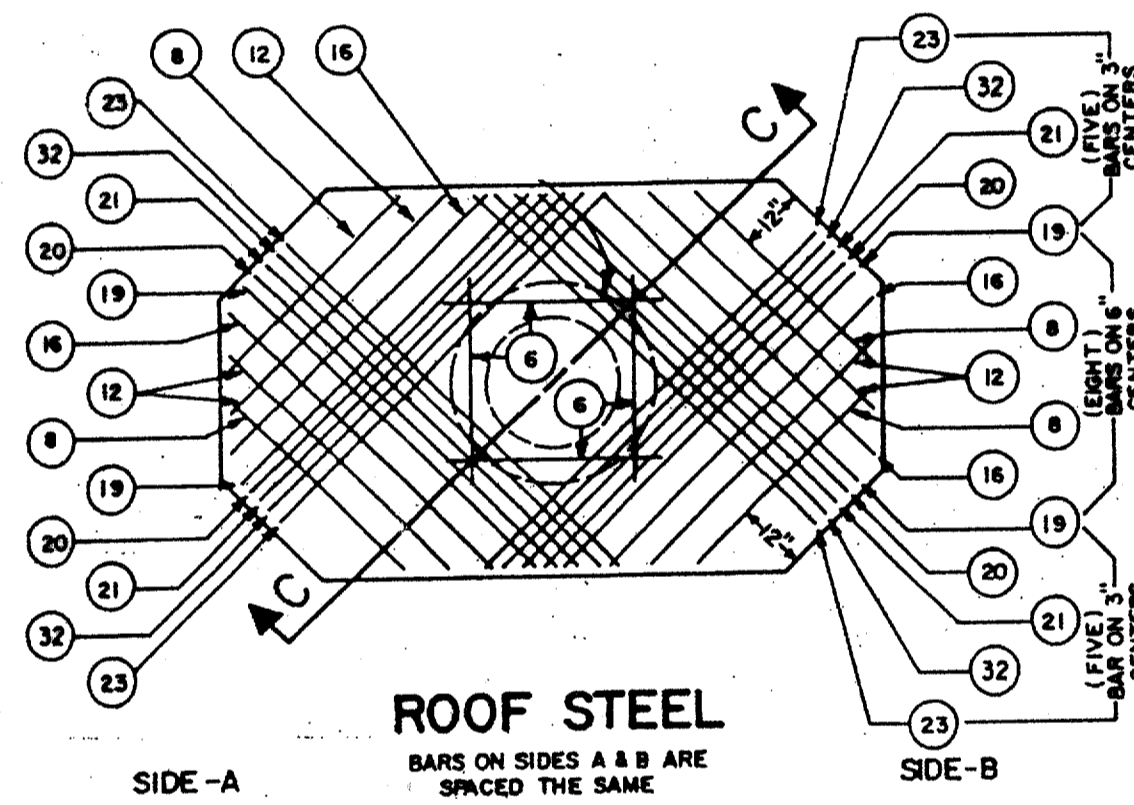
NOTE: SEE DETAIL # ② FOR DEEP PANEL WHEN CALLED FOR ON JOB SKETCH.



PLAN VIEW

SECTION A-A

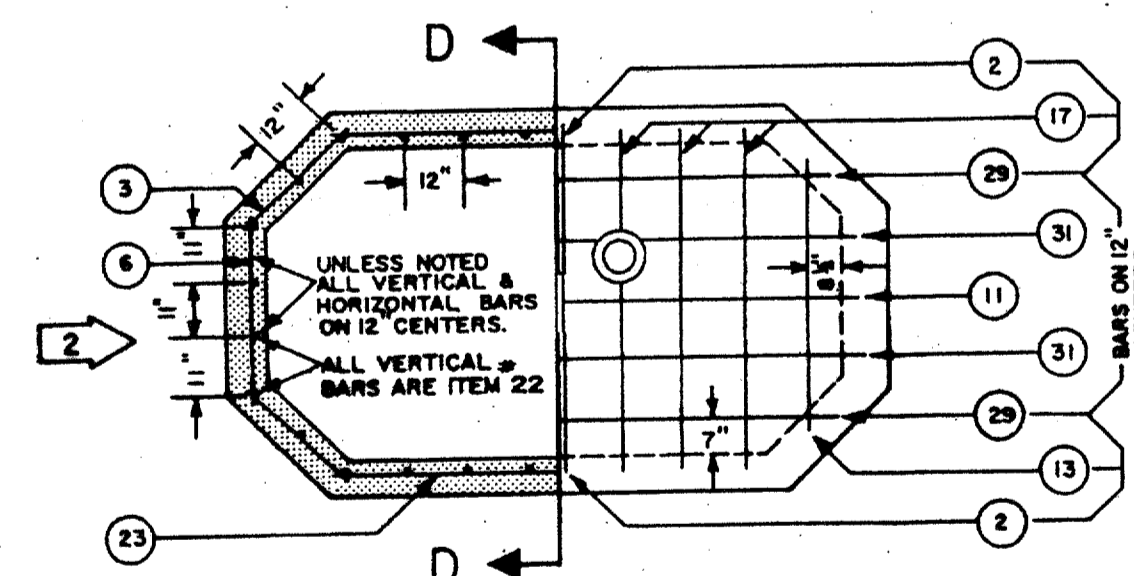
SECTION B-B



ROOF STEEL

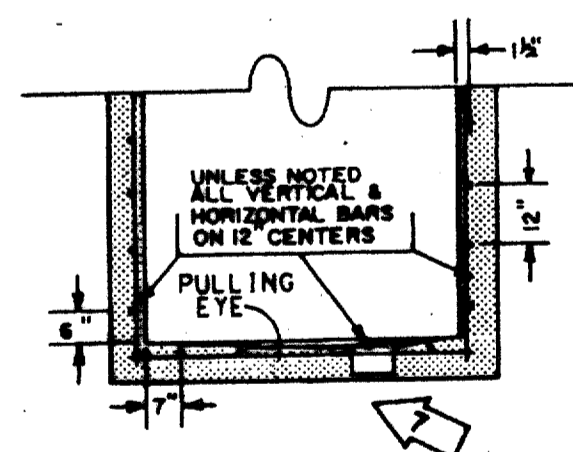
SIDE - A

SIDE - B



WALL STEEL
(TYPICAL)

FLOOR STEEL
(TYPICAL)

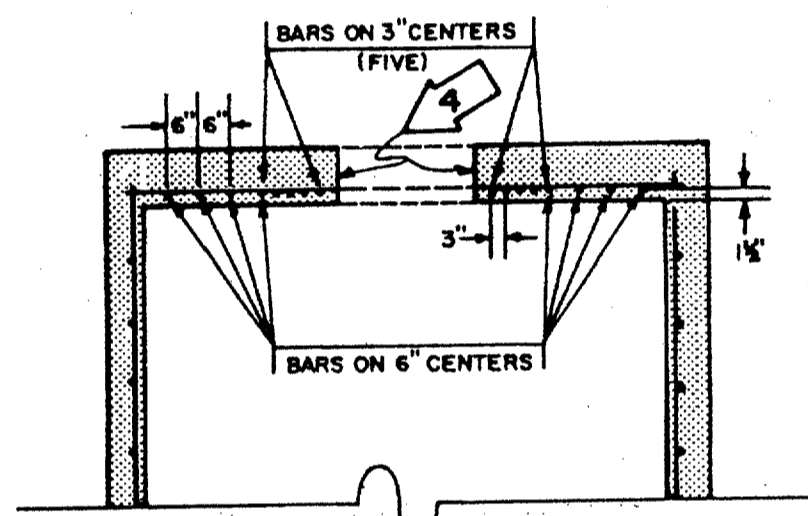


SECTION D-D

ITEM	LENGTHS		QUANTITY			
	FT.	IN.	FLOOR	WALLS	ROOF	TOTAL
2	2	3	2			2
3	2	6		24		24
6	3	3		12	4	16
8	3	9			4	4
11	4	6	2			2
12	4	9			4	4
13	5	0	2			2
16	5	9			4	4
17	6	0	6			6
19	6	6			4	4
20	6	9			4	4
21	7	0			4	4
22	7	10		28		28
23	7	6		12	4	16
29	9	0	2			2
31	10	3	2			2

STEEL TO CONFORM TO THE LATEST STANDARD SPECIFICATION FOR DEFORMED BILLET-STEEL BARS FOR CONCRETE REINFORCEMENT.
SEE DETAIL # ① FOR CONCRETE SPECIFICATION

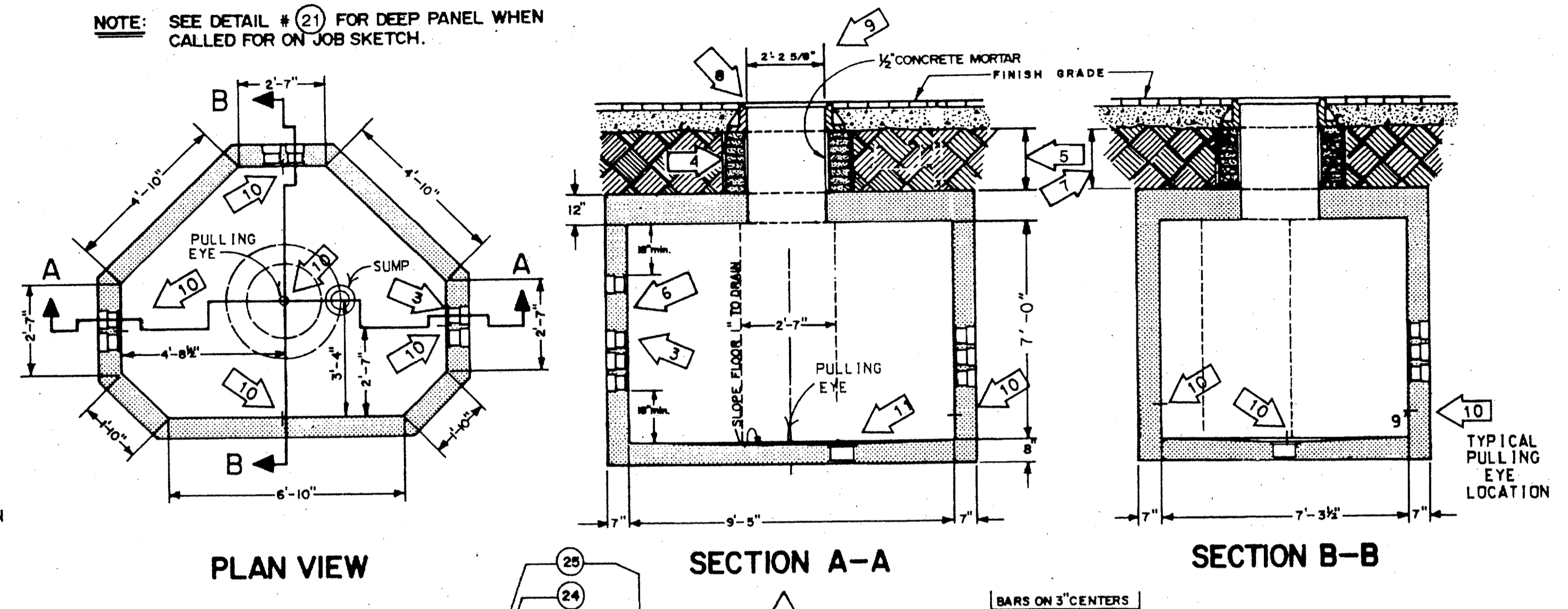
SECTION C-C



— TYPE "C" MANHOLE —

DETAIL # ②

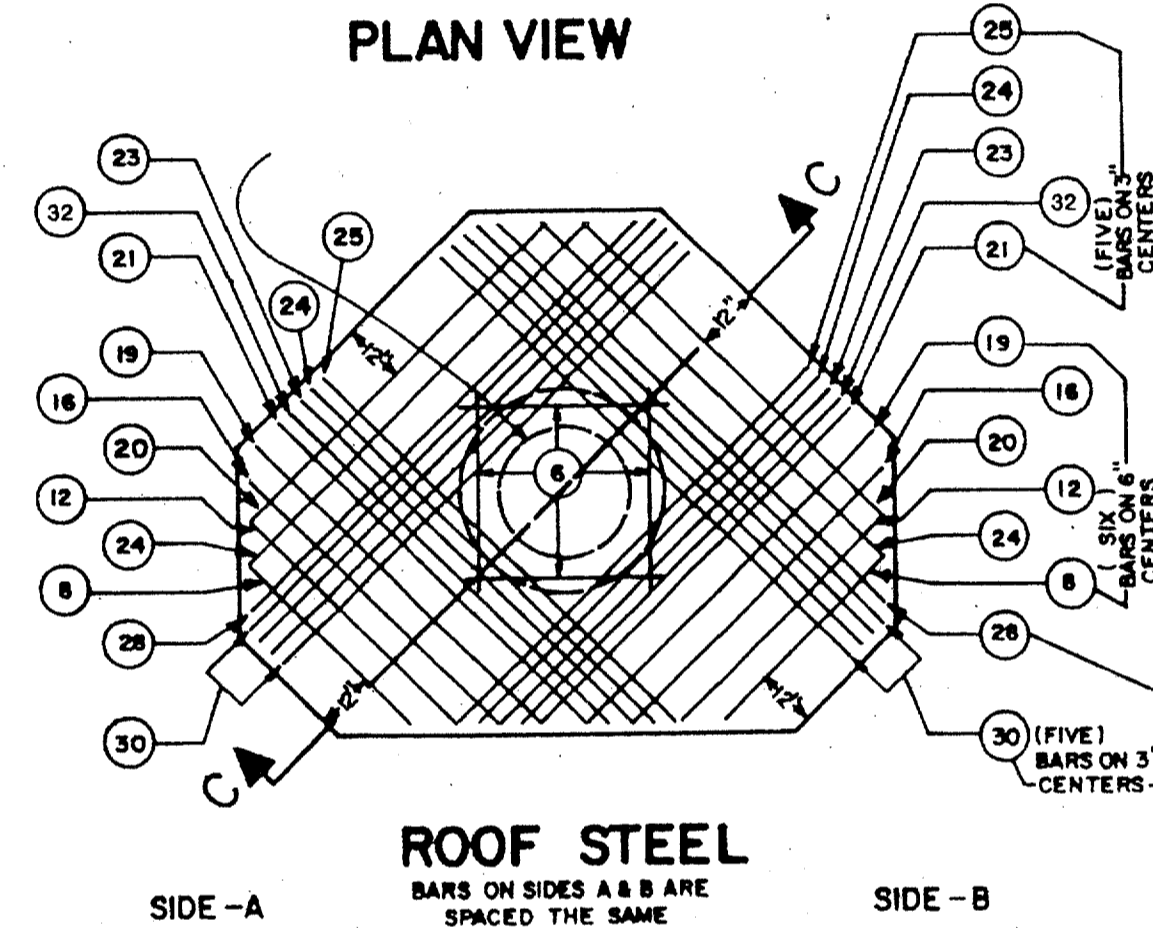
NOTE: SEE DETAIL # ② FOR DEEP PANEL WHEN CALLED FOR ON JOB SKETCH.



PLAN VIEW

SECTION A-A

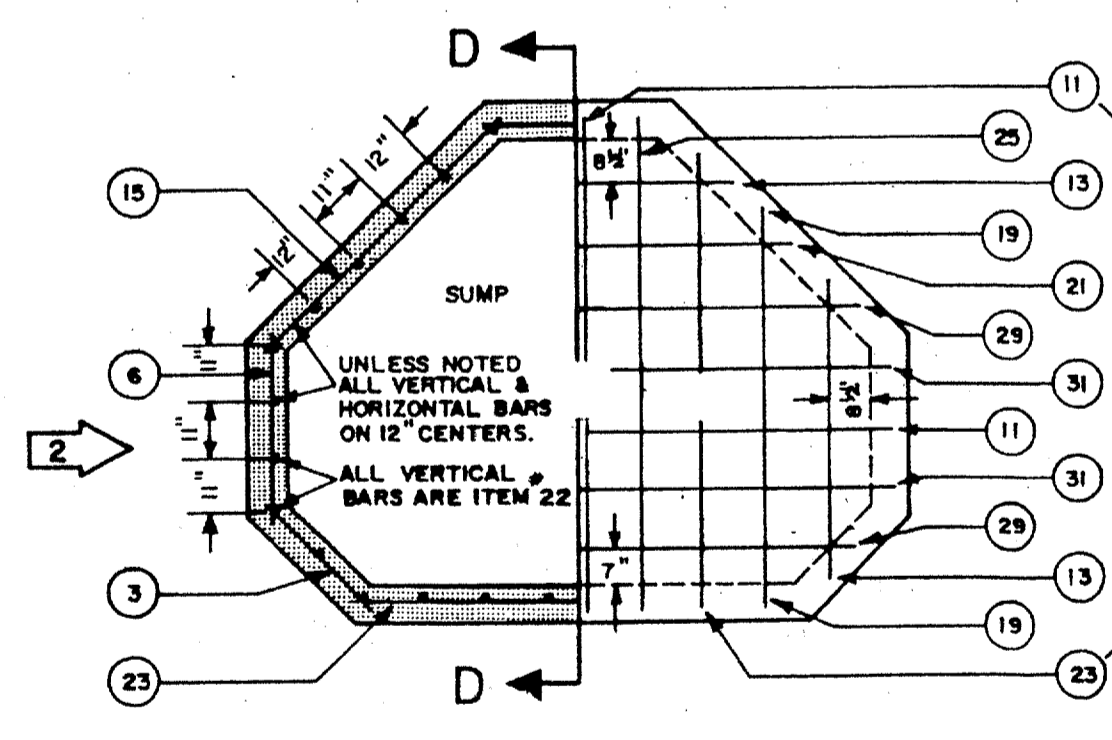
SECTION B-B



ROOF STEEL

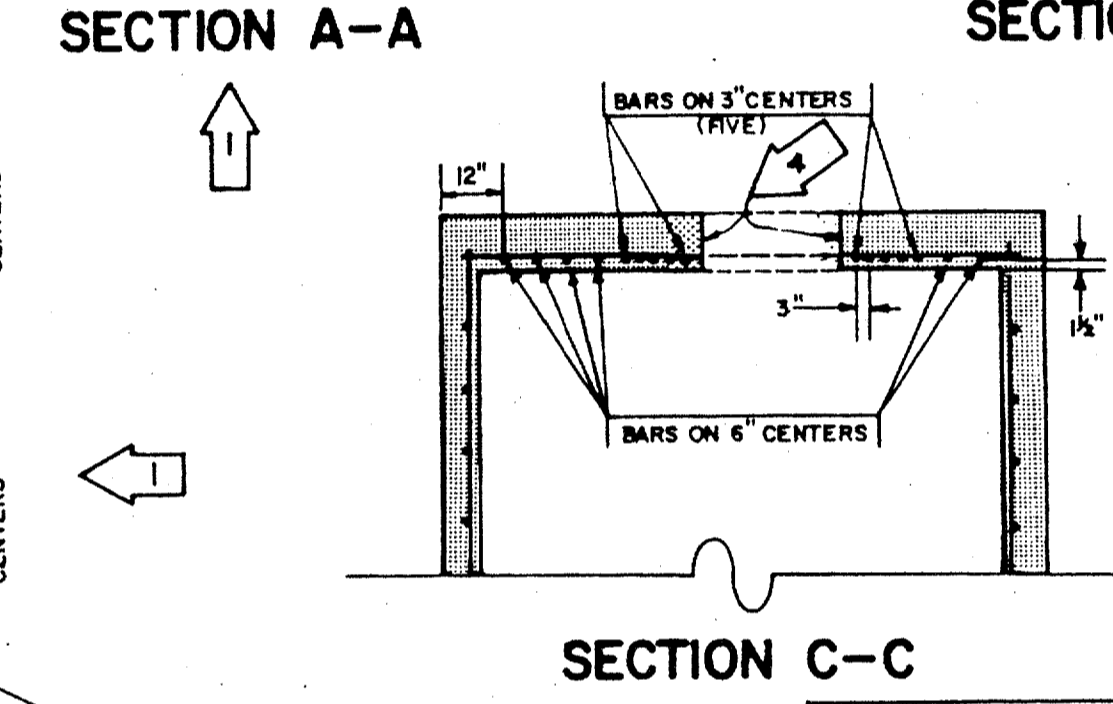
SIDE - A

SIDE - B

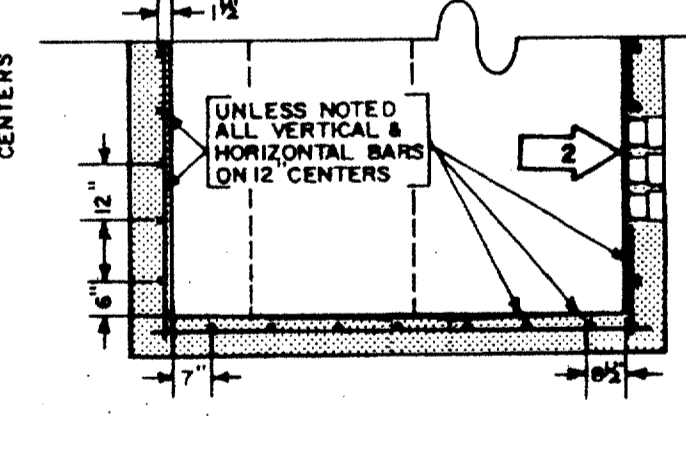


WALL STEEL
(TYPICAL)

FLOOR STEEL
(TYPICAL)



SECTION C-C



SECTION D-D

ITEM	LENGTHS		QUANTITY			
	FT.	IN.	FLOOR	WALLS	ROOF	TOTAL
2	2	3	1			1
3	2	6		12		12
6	3	3		18	4	22
8	3	9			2	2
11	4	6	3			3
12	4	9			2	2
13	5	0	3			3
15	5	6		12		12
16	5	9			2	2
19	6	6	2			2
20	6	9			2	2
21	7	0	1			1
22	7	10		30		30
23	7	6	2	6	2	10
24	7	9			4	4
25	8	0	2			2
28	8	9			2	2
29	9	0	2			2
30	9	3			8	8
31	10	3	2			2

STEEL TO CONFORM TO THE LATEST STANDARD SPECIFICATION FOR DEFORMED BILLET-STEEL BARS FOR CONCRETE REINFORCEMENT.
SEE DETAIL # ② FOR CONCRETE SPECIFICATION

— GENERAL NOTES —

- ➡ STANDARD HEADROOM - 7'-0" ALL REINFORCING BARS TO BE #5 DEFORMED BARS. ALL BARS TO HAVE MINIMUM COVER OF 1 1/2". ALL DIMENSIONS ARE TO C. OF BARS. SEE PLANS FOR EXTRA HEADROOM.
- ➡ FIELD CUT STEEL AS REQUIRED FOR TERMINATORS.
- ➡ NUMBER OF TERMINATORS SHOWN ON PLANS INSTALLED IN EACH END PANEL. SEE DETAIL # ⑧
- ➡ BLOCK UP CASTING WITH BRICKS TO FINISH GRADE. BRICKWORK TO RECEIVE 1/2" MORTAR COATING INSIDE & OUTSIDE.
- ➡ 1 1/2" MINIMUM CUSHION.
- ➡ FOR GROUNDING DETAILS SEE DETAIL # ⑰
- ➡ A PRECAST REINFORCED CONCRETE NECK MAY BE USED WHEN 28" OR MORE. SEE DETAIL # ⑬
- ➡ 4'-4" X 4'-4" X 6" CONCRETE SLAB AROUND M.H. CASTING WHEN INSTALLED IN UNPAVED AREA. SEE DETAIL # ⑩
- ➡ 26 1/2" MH CASTING. SEE DETAIL # ⑱
- ➡ PULLING EYE. SEE DETAIL # ⑫
- ➡ SUMP. SEE DETAIL # ⑭

TU ELECTRIC

NETWORK UNDERGROUND APPURTENANCE SHEETS
MANHOLE DETAILS

SCALE: NO SCALE
LIST OF DRAWINGS
W.A.
ESTIMATE
UNIT ID
DWG TYPE
REVISION DESCRIPTION
DATE
NO.
W.A.
APP. PRN
APP. JES
ENG. JRC
CH. JRC
DATE 12-12-91
DW. MED
APP. JES
CH. JRC
DATE 12-12-91
DW. MED
APP. JES
CH. JRC

E NUA-1
SHEET NO. 1