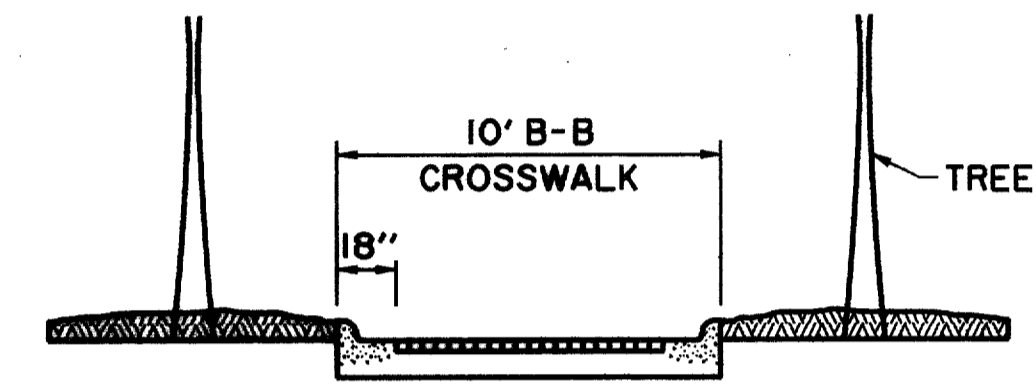
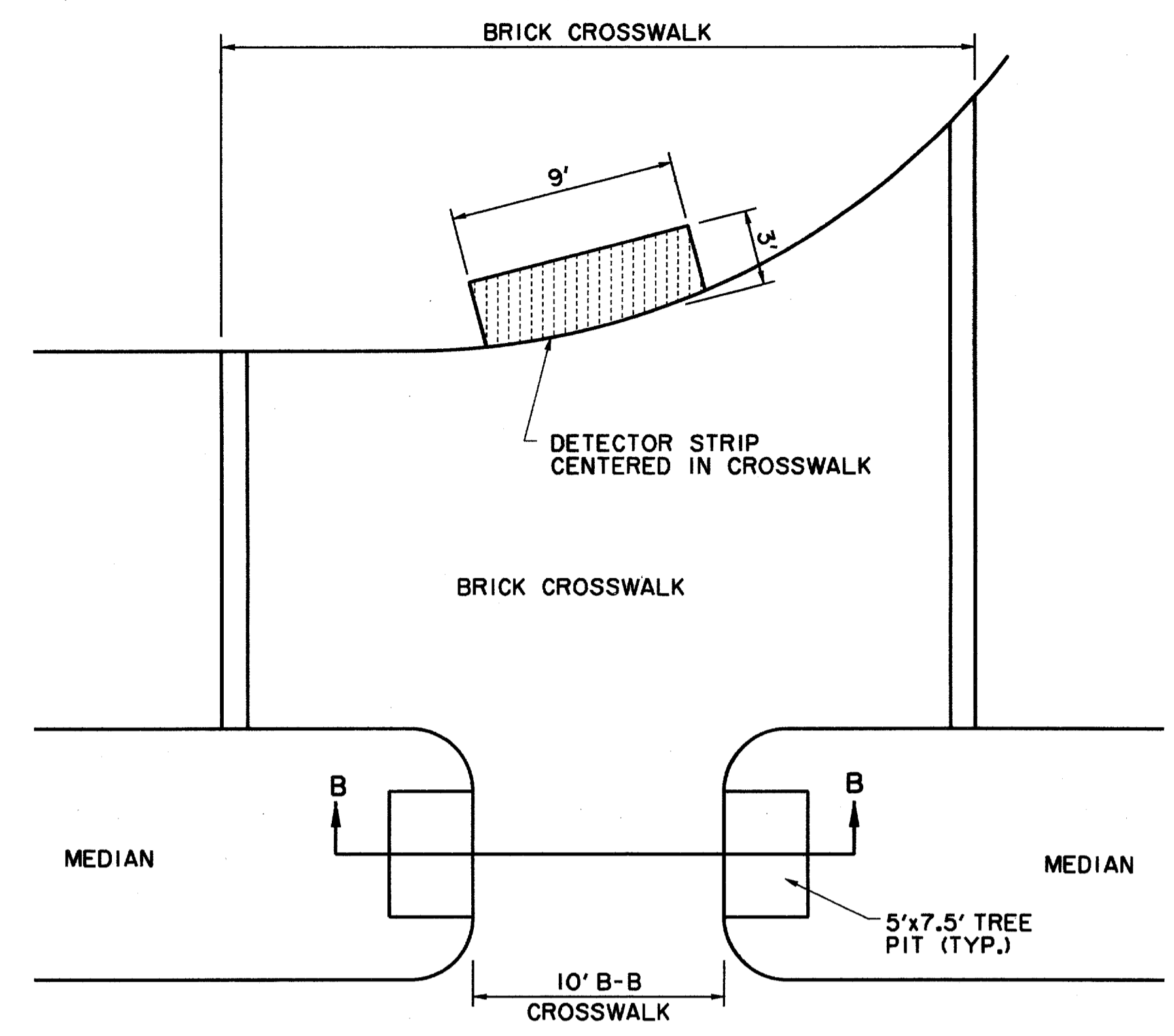


DRIVEWAY TURNOUT DETAIL

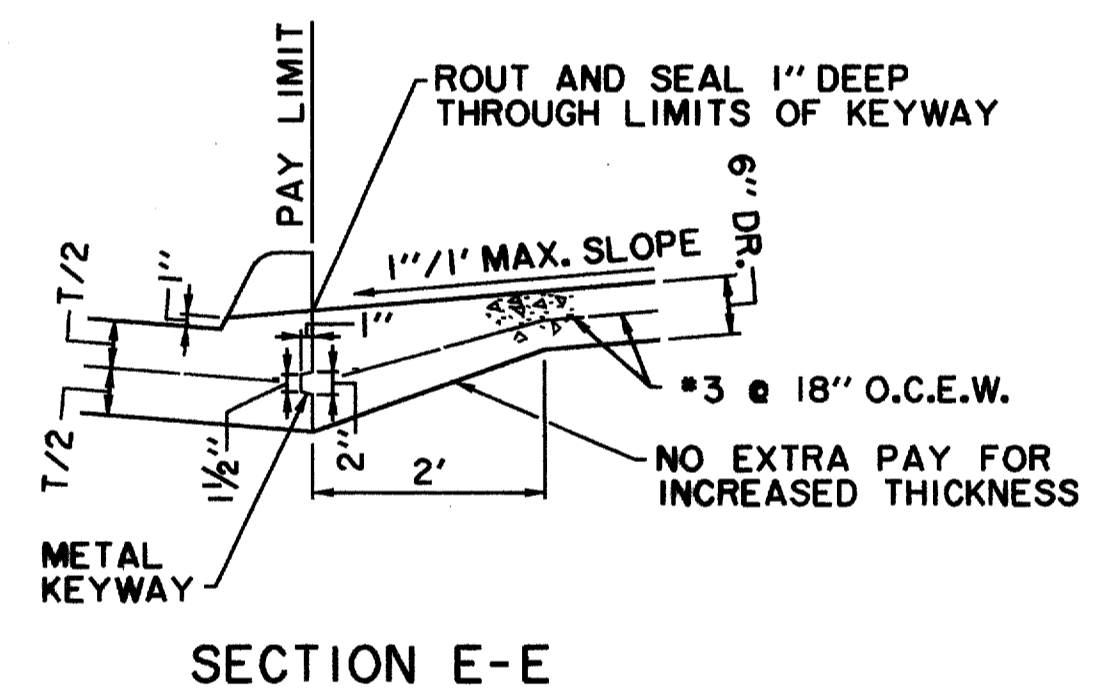
- NOTES:**
1. PAVEMENT JOINTS SHALL NOT EXTEND THROUGH DRIVE.
  2. KEYWAY LIMITS SHALL COINCIDE WITH LIMITS OF 1" CURB.
  3. REINFORCING STEEL SHALL NOT EXTEND THROUGH KEYWAY. DRIVE WILL NOT BE TIED TO PAVEMENT.
  4. MAXIMUM SLOPE ON DRIVE IN ANY DIRECTION SHOULD BE 1"/1' TO RESPECT PRINCIPLES OF BARRIER FREE CONSTRUCTION.
  5. LENGTH OF TRANSITION FOR CURB AT EACH SIDE OF DRIVE MAY VARY DUE TO STREET GRADES AND REQUIREMENT TO HOLD MAXIMUM SLOPE OF 1"/1'.



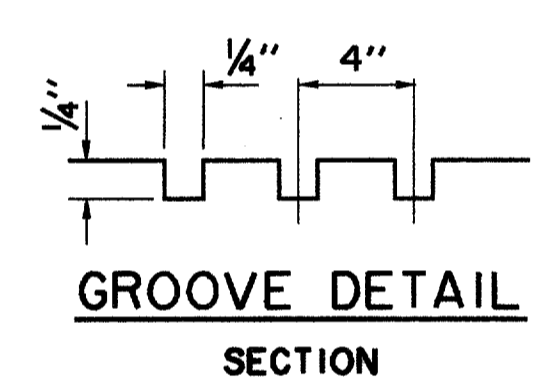
SECTION B-B



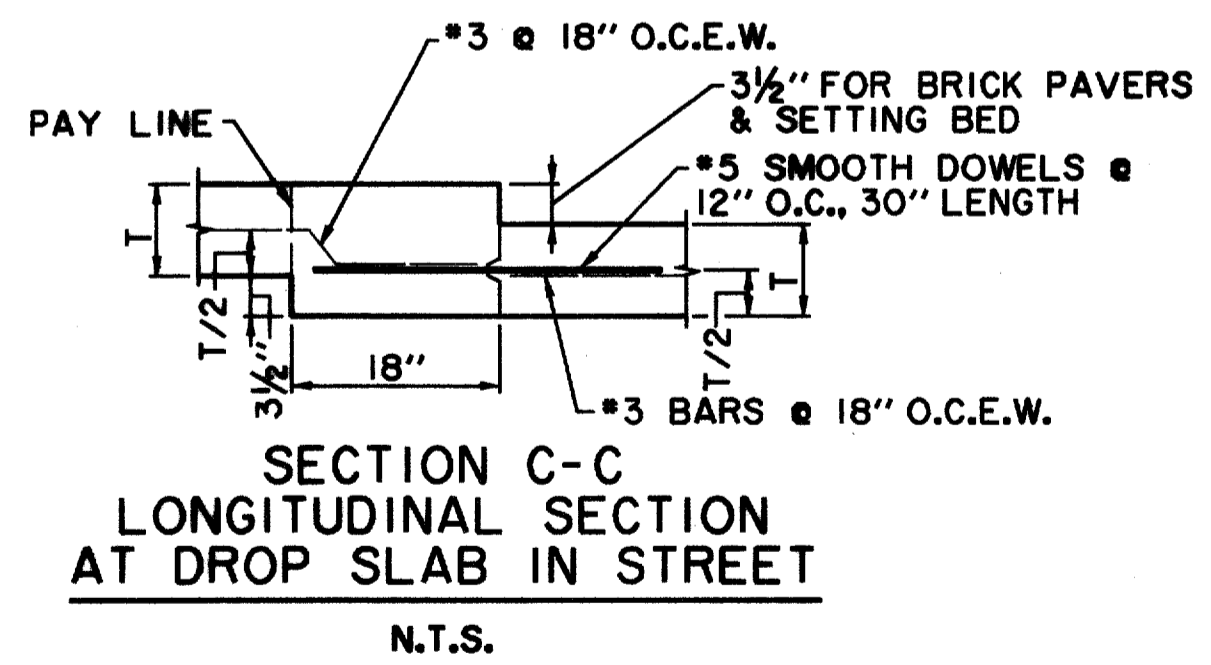
BARRIER FREE RAMP DETAIL AT MODERN ROUNDABOUT



SECTION E-E

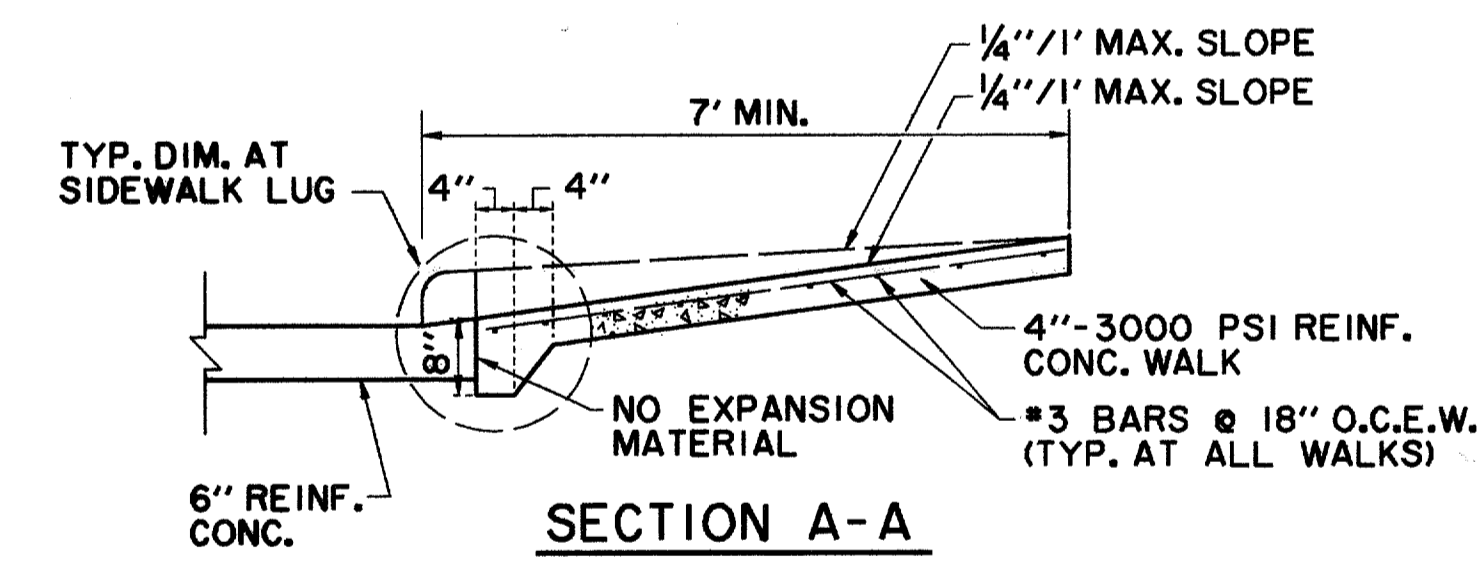


GROOVE DETAIL SECTION



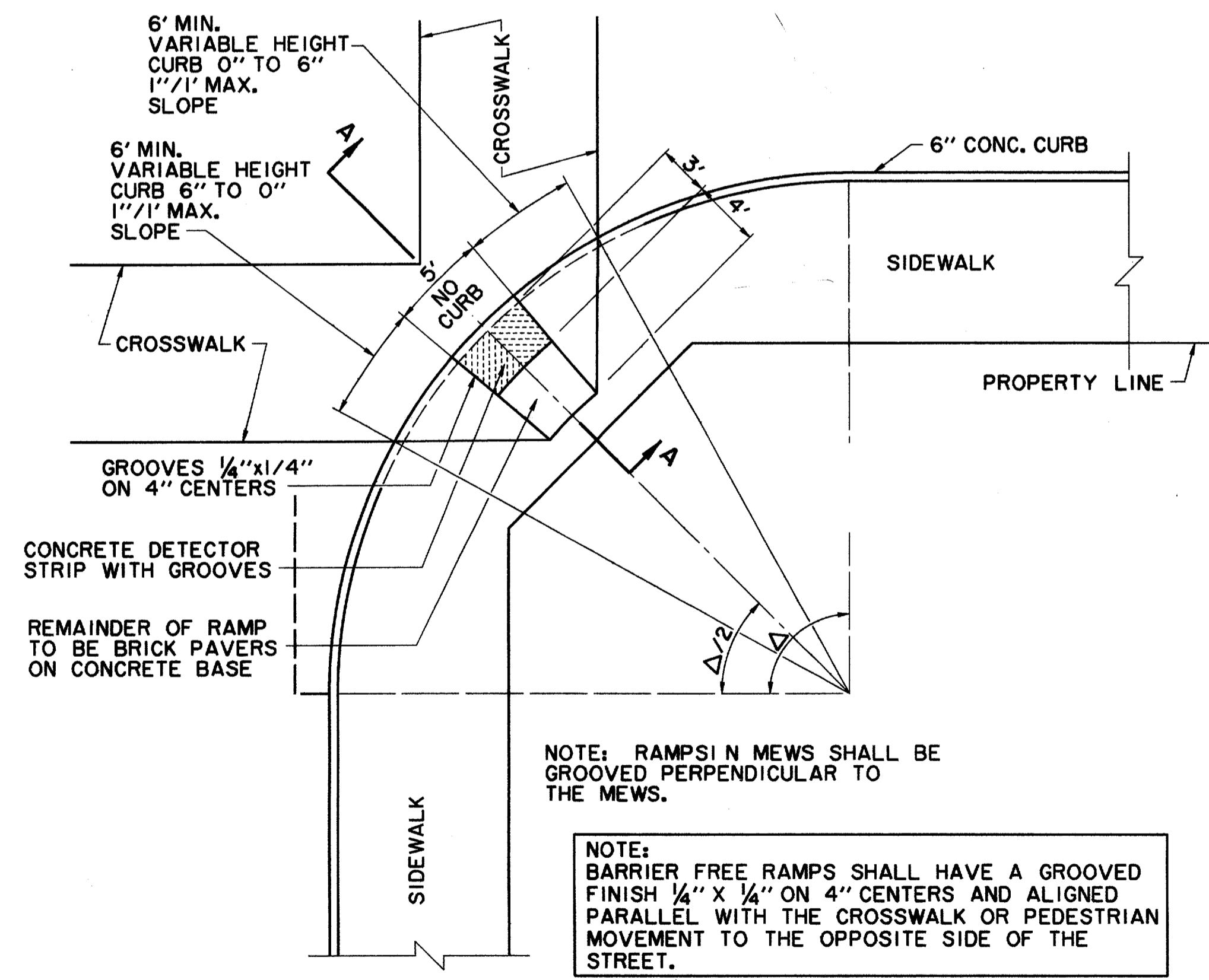
SECTION C-C LONGITUDINAL SECTION AT DROP SLAB IN STREET

N.T.S.



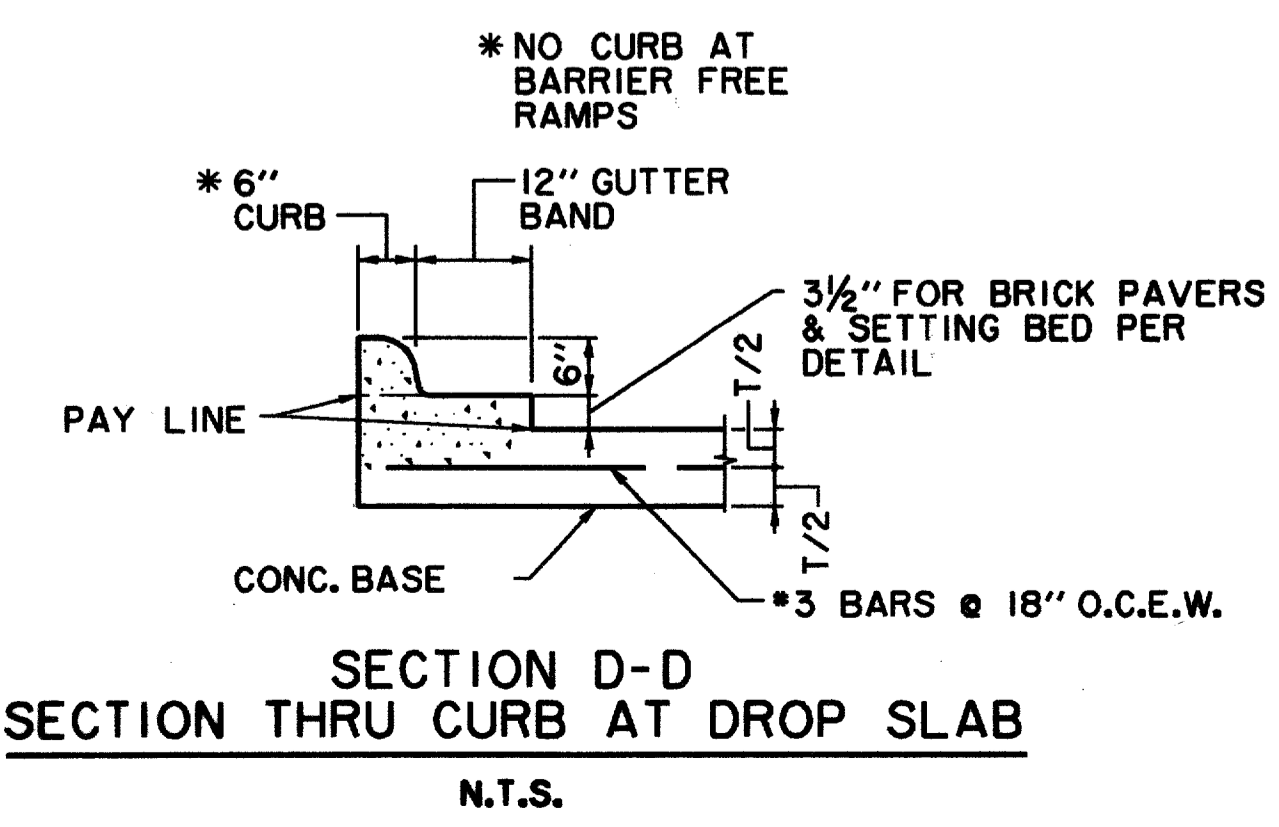
SECTION A-A

- NOTES:**
1. ALL HONEYCOMB IN BACK OF CURB SHALL BE TROWEL-PLASTERED BEFORE POURING SIDEWALK
  2. LUG MAY BE FORMED BY SHAPING SUBGRADE TO APPROXIMATE DIMENSIONS SHOWN.



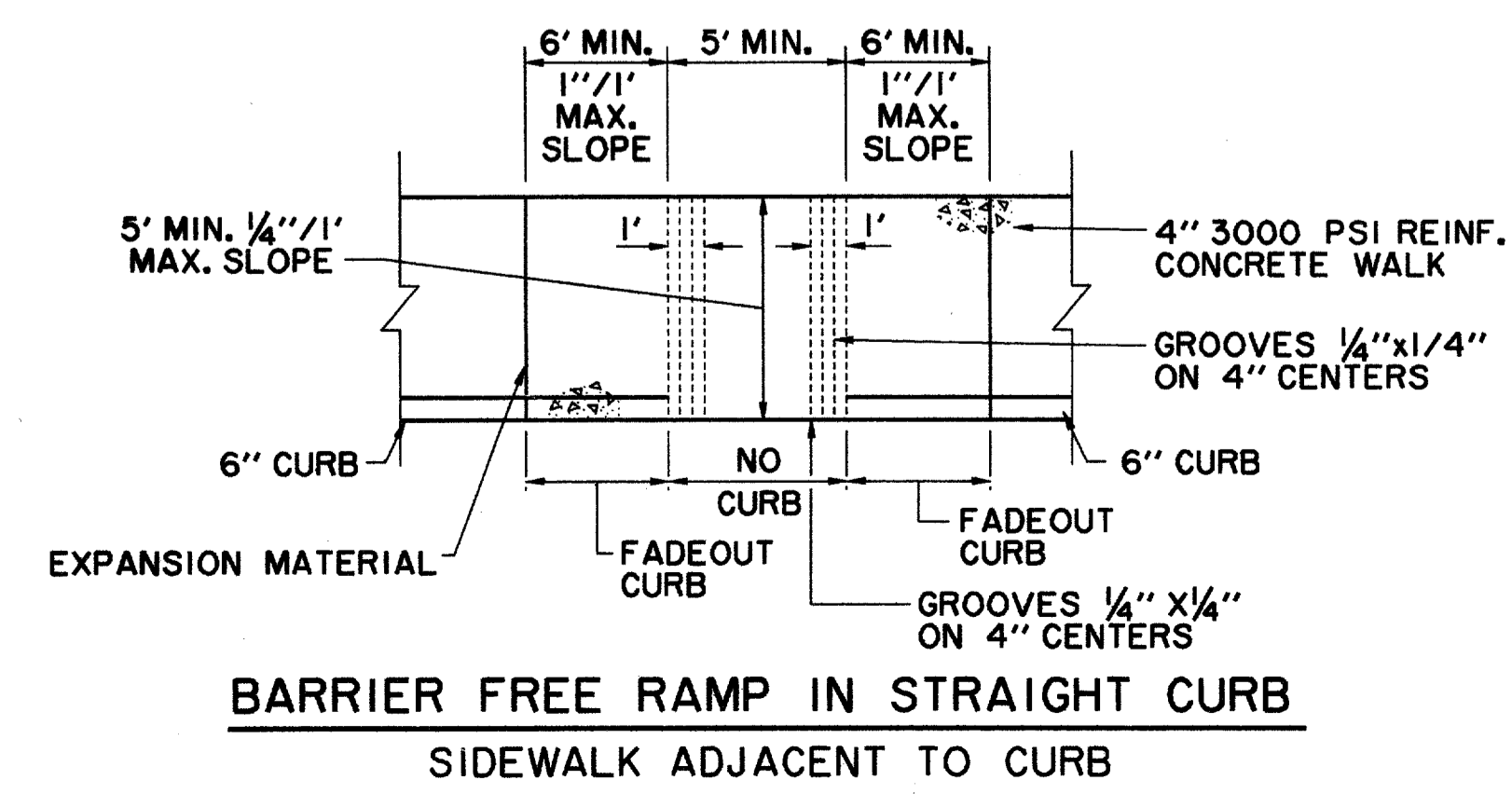
BARRIER FREE RAMP DETAIL AT INTERSECTING STREET

- BARRIER FREE RAMP GENERAL NOTES**
1. MAXIMUM SLOPE ON BARRIER FREE RAMPS MUST NOT EXCEED 1" PER FOOT AT ANY LOCATION.
  2. DESIGNS SHOWN ARE FOR 6" CURBS. FOR CURBS WITH HEIGHT GREATER THAN 6" DIMENSIONS MUST BE INCREASED PROPORTIONATELY.
  3. STREETS ON STEEP GRADE WILL REQUIRE LONGER TRANSITION ON UPGRADE SIDE.
  4. LOCATION OF BARRIER FREE RAMP MAY BE SHIFTED TO CLEAR OBSTRUCTIONS.
  5. CONCRETE TO HAVE MINIMUM 3000 P.S.I. COMPRESSIVE STRENGTH AT 28 DAYS.
  6. REINFORCEMENT TO BE #3 DEFORMED BARS AT 18" O.C.E.W. AND SUPPORTED BY APPROVED BAR CHAIRS ON 3'-0" CENTERS.
  7. GROOVES MUST BE CLEAN AND STRAIGHT FOR CLEAR DETECTION BY TOUCH WITH A CANE AND PARALLEL TO CROSSWALKS.



SECTION D-D SECTION THRU CURB AT DROP SLAB

N.T.S.



BARRIER FREE RAMP IN STRAIGHT CURB SIDEWALK ADJACENT TO CURB

- RECORD DRAWING 5/1/98
- DELETED DETECTABLE WARNING STRIP DETAILS ADDED PER ADDENDUM #2 & #4. 11/15/96
  - ADDENDUM #4 2/16/96
  - ADDENDUM #2 1/22/96

ISSUED FOR CONSTRUCTION  
MARCH 28, 1996

THE SEAL APPEARING ON THIS DOCUMENT WAS AUTHORIZED BY  
KENNETH A. ROBERTS, P.E. 55446  
ON MARCH 28, 1996.

PAVING DETAILS						
ADDISON CIRCLE						
PHASE I PUBLIC INFRASTRUCTURE						
TOWN OF ADDISON, TEXAS						
Huiji-Zollars, Inc./Engineering/Architecture Dallas, Fort Worth, Houston, El Paso, Phoenix, Tustin, Ontario, San Clemente						
DESIGN	DRAWN	APPR.	SCALE	DATE	PROJECT NO.	NO.
HZI	HZI	KAR	N.T.S.	JAN 96	1822-04	33