

**STREET LIGHTING NOTES**

1. THE STREET LIGHTING FOR THIS PROJECT WILL CONSIST OF INSTALLATION OF 2" PVC CONDUIT, LIGHT POLE BASES AND PULL BOXES (HANDHOLES) AS A COMPLETE SYSTEM PER DETAILED SPECIFICATIONS. LIGHT POLES, LUMINAIRES, WIRING AND CONNECTION TO POWER SOURCE WILL BE PER T.U. ELECTRICAL DESIGN.
2. ALL STREET LIGHTING CONDUIT IS TO BE INSTALLED WITH A MINIMUM OF 24 INCHES OF COVER TO THE TOP OF THE PIPE FROM FINISHED PAVEMENT TO AVOID CONFLICT WITH IRRIGATION LINES WHICH WILL BE AT 12" AND 18" DEPTH. CONDUIT SHOULD BE NO DEEPER THAN 36" TO AVOID CONFLICT WITH OTHER UTILITIES.
3. FOR THE PURPOSES OF COORDINATION, LIGHTS TO BE INSTALLED PER THE ELECTRICAL PLANS FOR THIS PROJECT WILL BE THE FOLLOWING:

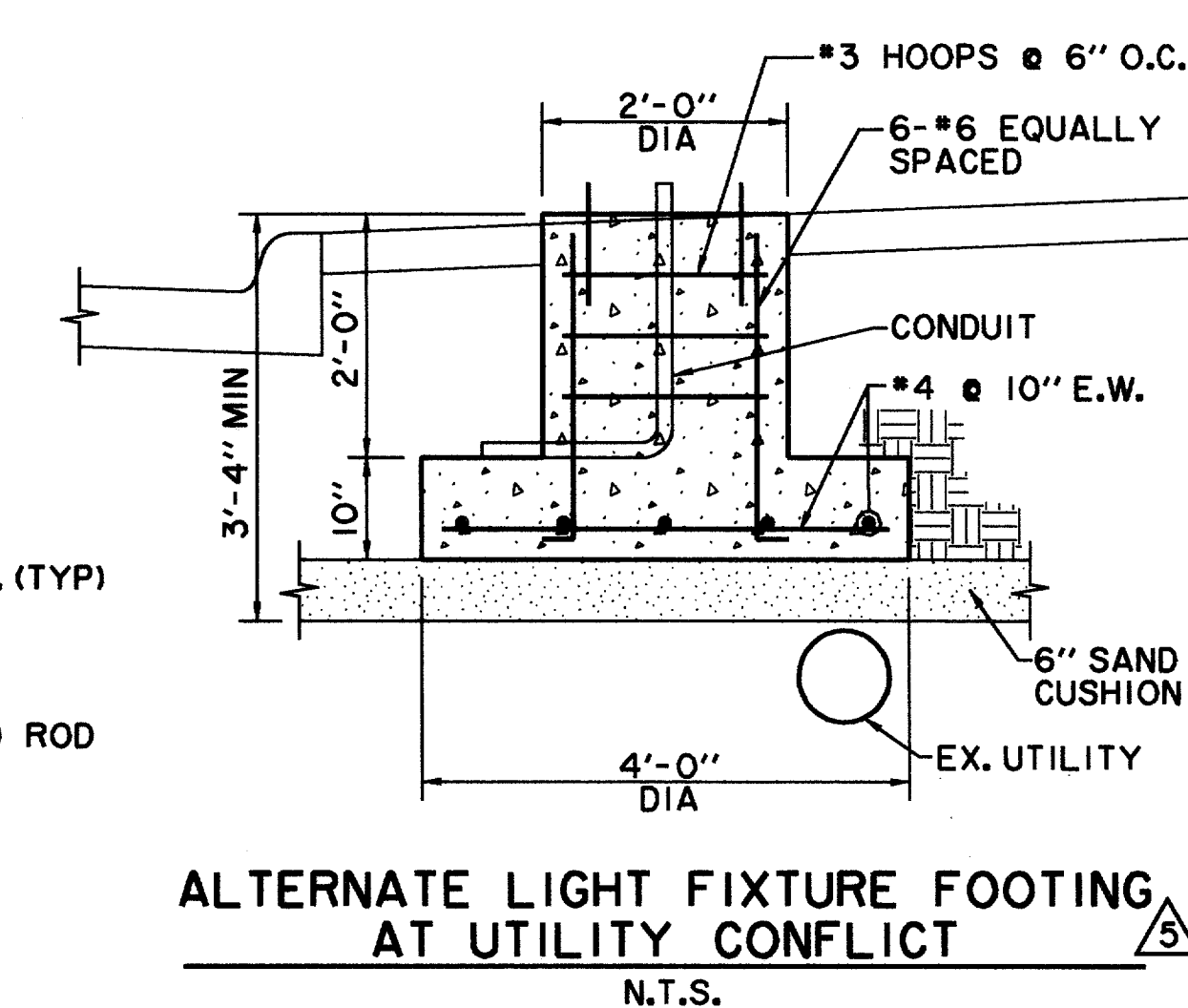
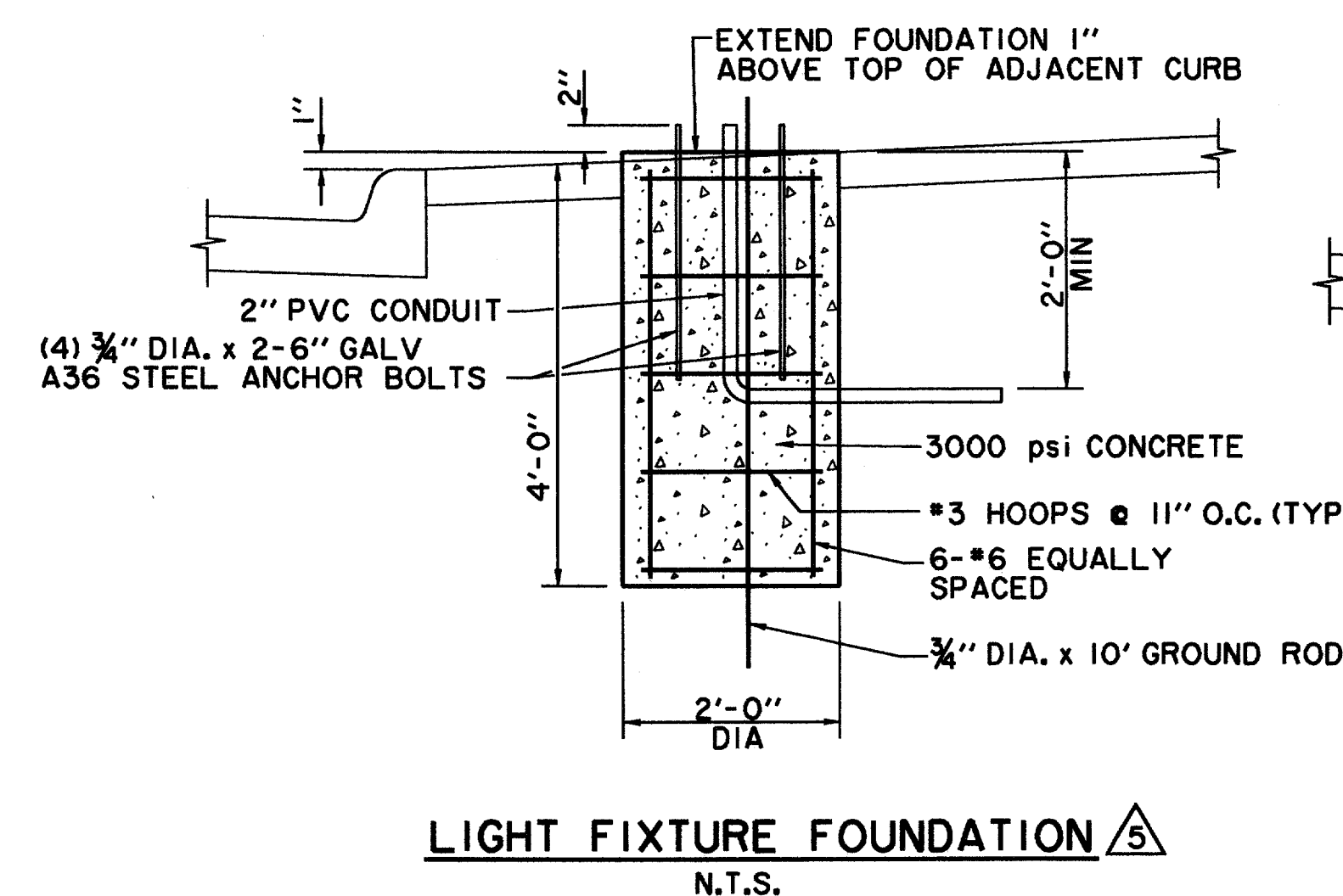
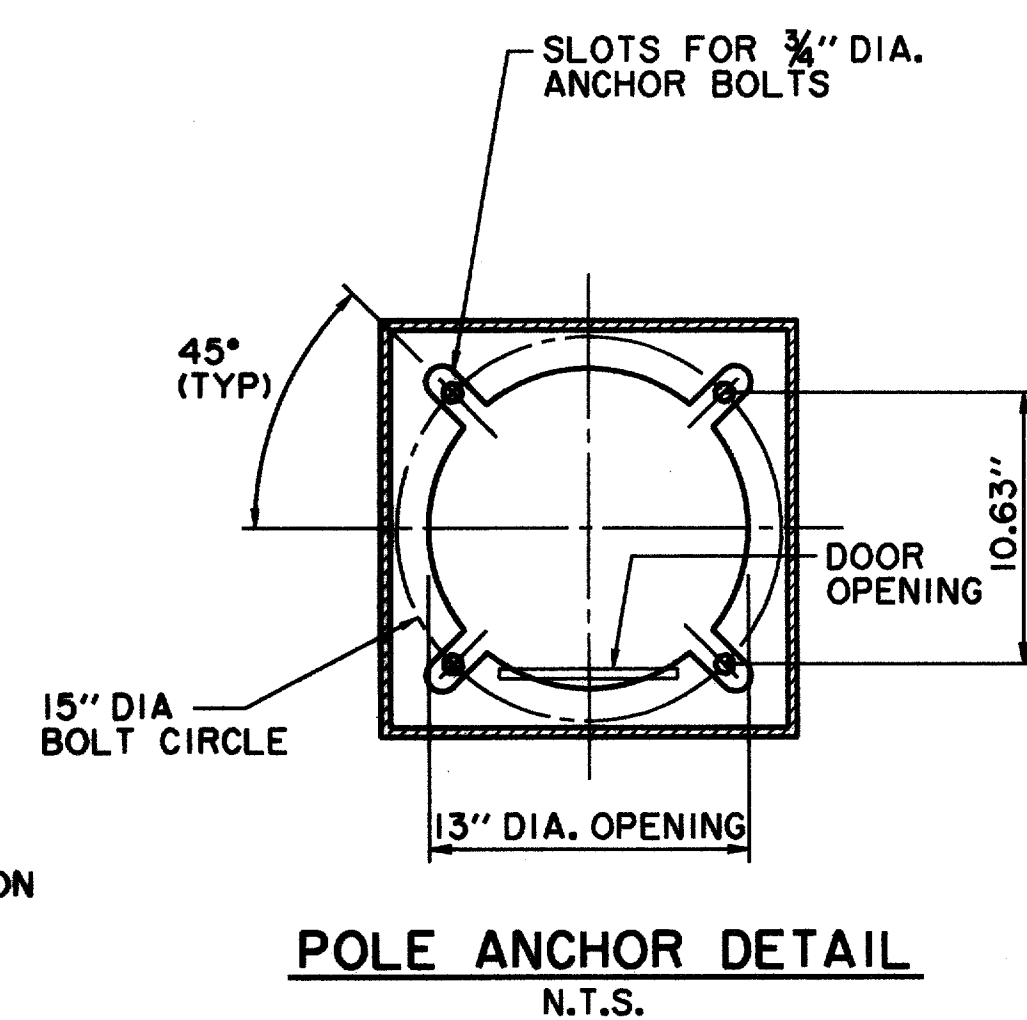
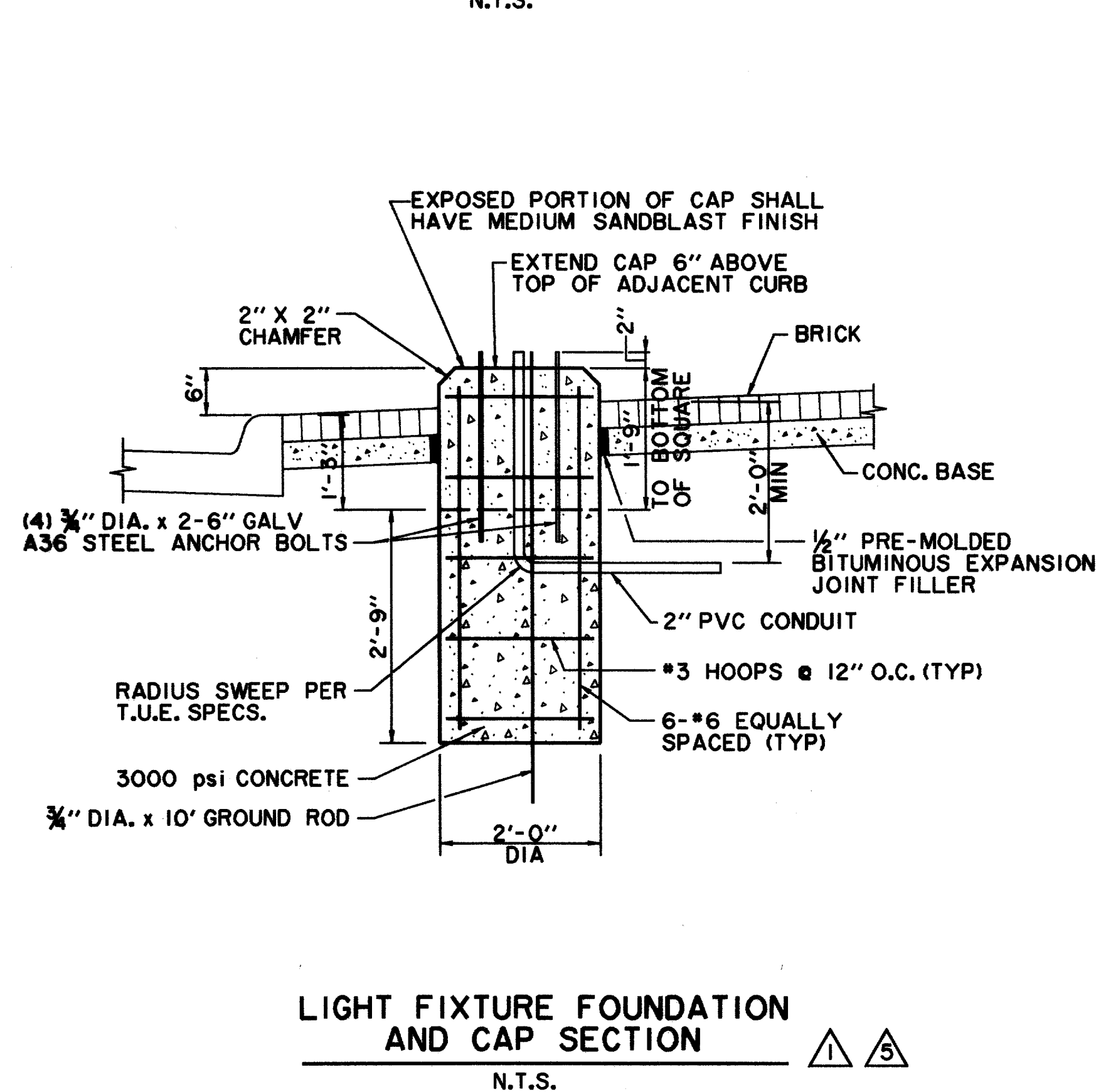
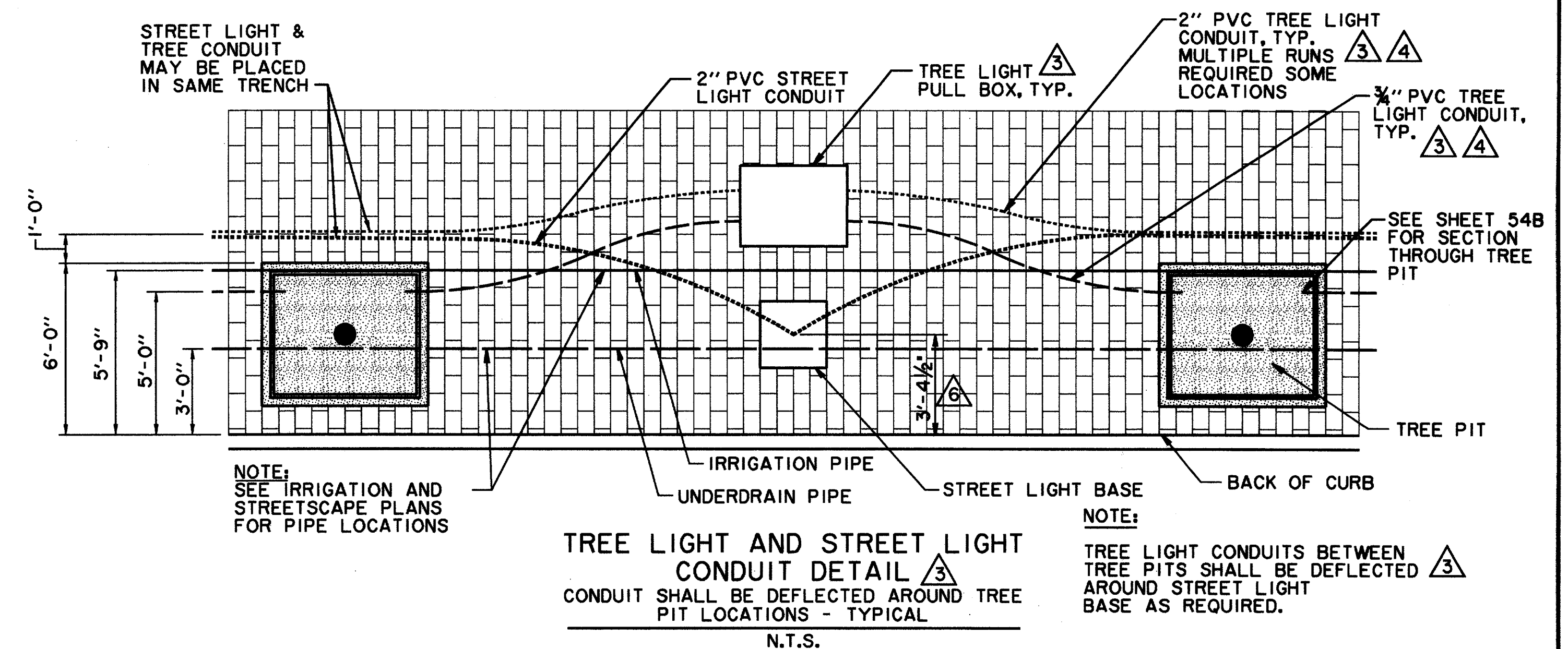
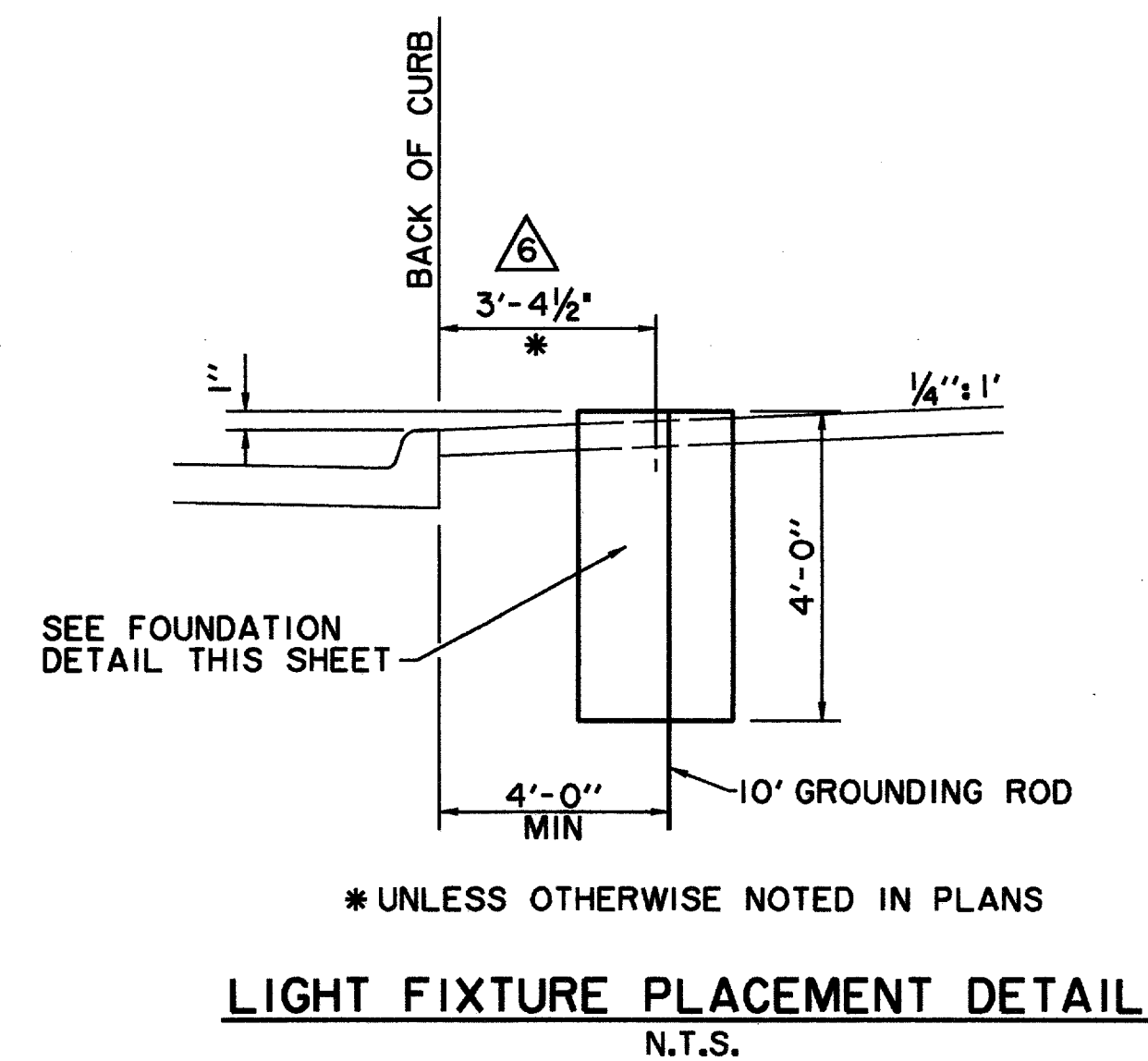
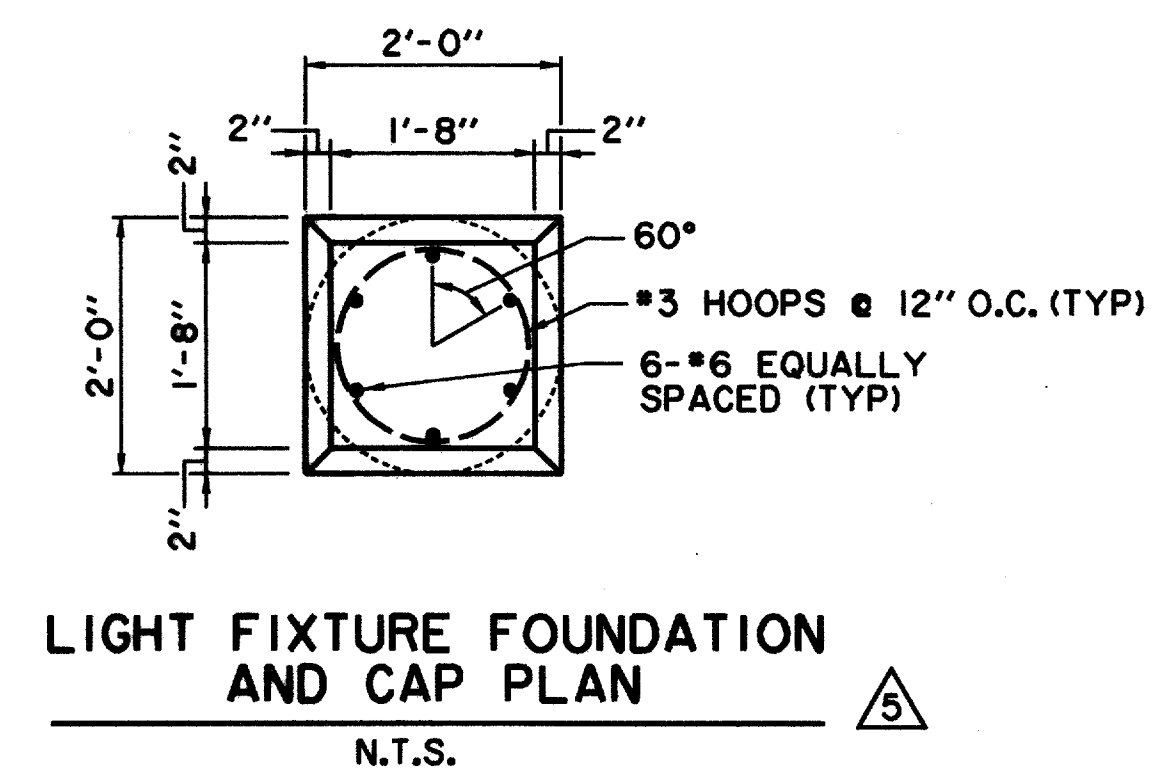
BEGA 1508HR-BLACK 15'-8" ROUND TAPERED POLE

THIS POLE WILL BE INSTALLED WITH A 175 WATT METAL HALIDE BEGA 9801 ED-17MH/120V FIXTURE AND LUMINAIRE.

POLES WILL BE PRIMED AND PAINTED AT THE FACTORY.

LOCATIONS OF ANY STREET LIGHTS MAY NOT BE ALTERED WITHOUT PERMISSION FROM THE ENGINEER.

THE LETTER "C" SHALL BE STAMPED OR CHISELED ON CURB AT ALL LOCATIONS OF CONDUIT UNDER DRIVES AND INTERSECTIONS.



RECORD DRAWING 5/1/98

- REVIS 6: REVISED DIMENSION FROM BACK OF CURB TO CENTER OF LIGHT 11/15/96
- REVIS 5: REVISED STREET LIGHT FOUNDATIONS 10/11/96
- REVIS 4: REVISED TREE LIGHT CONDUIT SIZES 9/25/96
- REVIS 3: ADDED TREE LIGHT CONDUIT & PULL BOX 6/28/96
- REVIS 2: ADDENDUM #4 2/16/96
- REVIS 1: ADDENDUM #2 1/22/96

ISSUED FOR CONSTRUCTION  
MARCH 28, 1996

THE SEAL APPEARING ON THIS DOCUMENT WAS AUTHORIZED BY KENNETH A. ROBERTS, P.E. 55446 ON MARCH 28, 1996.



STREETSCAPE DETAILS					
ADDISON CIRCLE					
PHASE I PUBLIC INFRASTRUCTURE					
TOWN OF ADDISON, TEXAS					
Huitt-Zollars, Inc./Engineering/Architecture Dallas, Fort Worth, Houston, El Paso, Phoenix, Tustin, Ontario, San Clemente					
DESIGN	DRAWN	APPR.	SCALE	DATE	PROJECT NO.
HZI	HZI	KAR	N.T.S.	JAN 96	1822-04
					57
					137