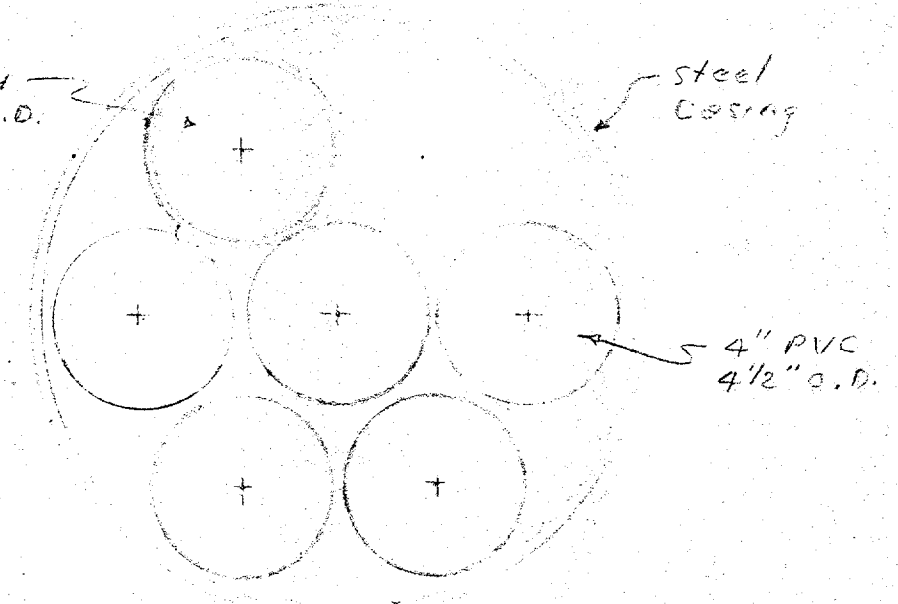


NOTE: ALL ELEVATIONS OF EXIST. DUCTS AND MANHOLE TAKEN FROM S.W.B.T. CO. PLANS THAT PLACED THEM

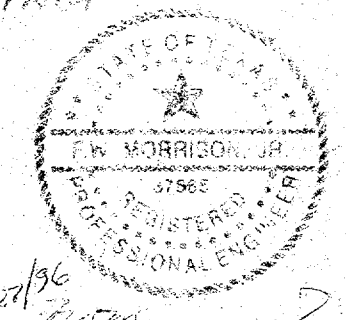
PLACE 6" 4" PVC-TYPE "C" EXIST. DUCTS - CENTER OF MH - 527' EXIST. DUCTS - WALL OF MH - 521' M.H. 9249 TO M.H. C-C 608E' W-W 596E'

OPER. ACTION CODE	SUPPL ACTION CODE	MAJOR MATERIAL DESCRIPTION	ACCT. CODE	ML OR AMT.	PL	BORE	REMOVALS	
							AMOUNT	MORT. DATE
4	PLAC	TRENCH G MPC	4C	521.5'		103'		
5	PLAC	PVC - C-4"	4C	3129'				
1	ABAN	6" PVC DUCTS	4X				25'	87



15 1/2" I.D. steel casing scale: 1" = 5"

NOTES: LOCATION AND DEPTH OF FO CABLE ARE APPROXIMATE - CONTACT OWNER BEFORE DIGGING.
FLOW LINE OF 60" RCP TAKEN FROM CITY CONSTRUCTION DWGS.
LOCATE ALL UTILITIES BEFORE DIGGING!



4+00 SEE PLAN N:2C

JOB NUMBER		ADDISON - 239	
		QUORUM DR.	
SCALE		PROFILE HORIZ. 1" = 20'	
PLAN 1" = 20'		PROFILE VERT. 1" = 4'	
SOUTHWESTERN BELL TELEPHONE CO.			
W. D. SHIPP MGR. ENGR. DESIGN		JERRY SHELBY AREA MGR. ENGR. D.	DAVID NOBLET DIRECTOR. ENGR.
DATE ISSUED	6-5-96	DATE CONST. COMP'D	
E. R. NO.	EST. NO. 0607233	DRAWN BY	NOBLET D.T.C. 5-22-96
C.O.-239	TAX DIST.	DB.007	SHEET NO. 1