

ELECTRICAL TREE CONDUIT GENERAL NOTES

- 1 PULL BOXES SHALL BE AS SPECIFIED IN ADDENDUM #2, EXHIBIT "G" OF THE CONSTRUCTION SPECIFICATIONS AND CONTRACT DOCUMENTS FOR THE PROJECT.
- 2 ALL CONNECTIONS TO PULL BOXES SHALL BE MADE USING THREADED WATERTIGHT FITTINGS TO INSURE WATER TIGHT PULL BOX INSTALLATION.
- 3 ALL MAIN RUN CONDUITS SHALL BE SCHEDULE 40 2" PVC INSTALLED A MINIMUM OF 24" BELOW GRADE. CONDUIT BENDS SHALL BE 30-DEGREE, 36" RADIUS MINIMUM. SLEEVES CROSSING STREETS SHALL BE 3" SCHEDULE 40 PVC.
- 4 ALL BRANCH RUN CONDUITS FROM PULL BOXES TO TREE WELLS SHALL BE SCHEDULE 40 1" PVC INSTALLED A MINIMUM OF 24" BELOW GRADE. SEE TYPICAL DETAIL, SHEET 54B.
- 5 INSTALL PULL CORD IN ALL 2" CONDUITS WITH 24" SLACK.
- 6 THIS PLAN IS A SCHEMATIC REPRESENTATION OF CONDUIT SIZES AND LOCATIONS. SEE SHEET 57 FOR HORIZONTAL LOCATIONS OF CONDUIT IN TREE PITS. CONDUITS AND PULL BOXES MAY BE ADJUSTED HORIZONTALLY AND VERTICALLY TO AVOID CONFLICT WITH OTHER UTILITIES AT THE DIRECTION OF THE ENGINEER.
- 7 SEE TREE LIGHTING POWER PLANS (SEE SEPARATE CONTRACT) FOR WIRING, OUTLETS AT EACH TREE AND DETAILED DESIGN OF SYSTEM TO THE APPROXIMATE SERVICE POINTS SHOWN ON THIS PLAN.

LEGEND:

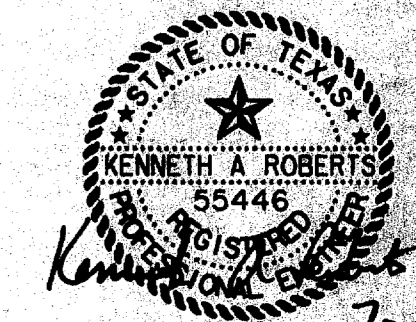
- PULL BOX
- 2" SCH. 40 PVC TREE LIGHTING CONDUIT
- 1" SCH. 40 PVC TREE LIGHTING CONDUIT
- 3" SCH 40 PVC TREE LIGHTING CONDUIT

DELETED CONDUIT ON OUTER RING ON EAST SIDE OF CIRCLE, MORRIS AVENUE AND WITT MEWS. REVISED LEGEND TO CHANGE 3/4" CONDUIT TO 1" CONDUIT. 5/5/97

REVISED LEGEND TO CHANGE 1" TO 3/4", CHANGE 3" TO 2", AND ADD A NEW SYMBOLOLOGY FOR 3" CONDUIT. 9/25/96

ISSUED FOR CONSTRUCTION
JULY 2, 1996

THE SEAL APPEARING ON THIS DOCUMENT WAS AUTHORIZED BY KENNETH A. ROBERTS, P.E. 55446 ON JULY 2, 1996.



7-2-96

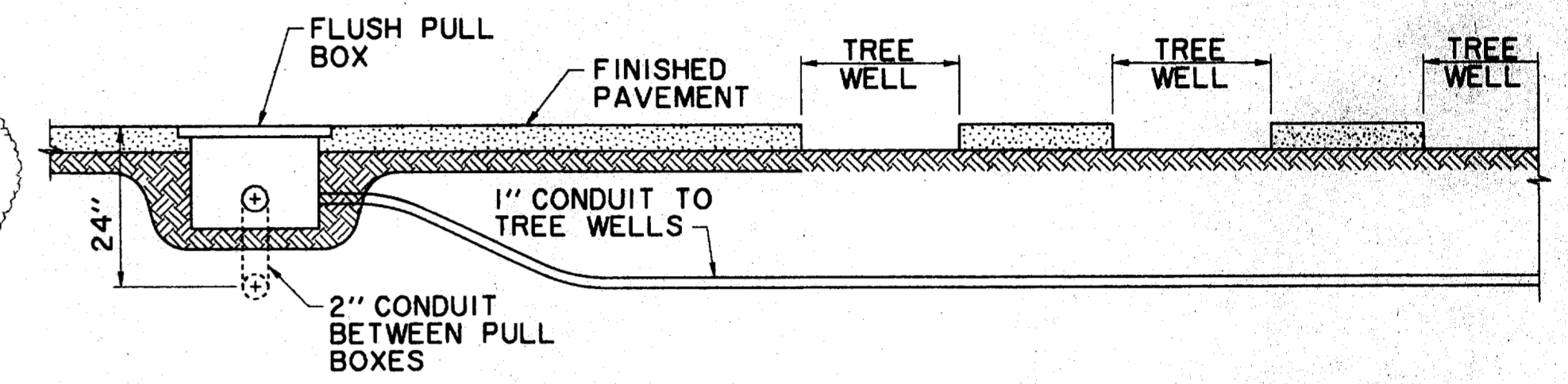
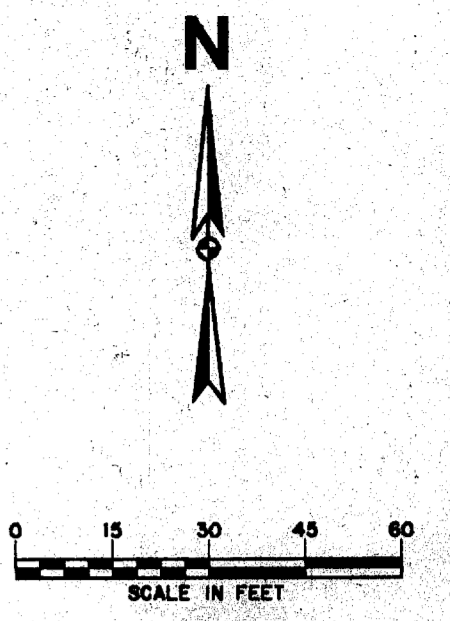
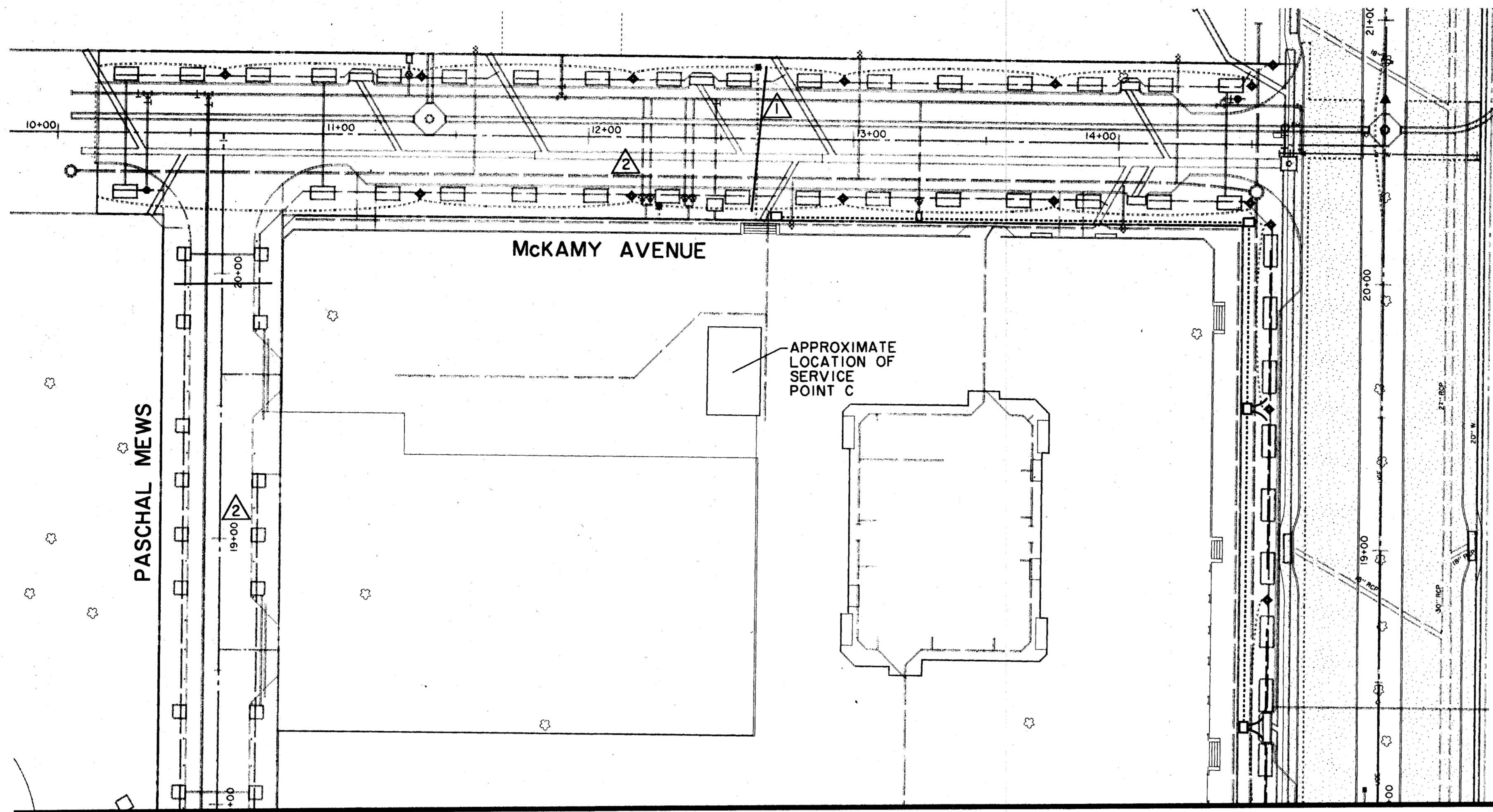
TREE LIGHTING CONDUIT PLAN
ADDISON CIRCLE
PHASE I PUBLIC INFRASTRUCTURE
TOWN OF ADDISON, TEXAS

Huitt-Zollars, Inc./Engineering/Architecture
Dallas, Fort Worth, Houston, El Paso, Phoenix, Tulsa, Ontario, San Clemente

DESIGN	DRAWN	APPR.	SCALE	DATE	PROJECT NO.	NO.
HZI	HZI	KAR	1"=30'	JUL 96	1822-04	54A

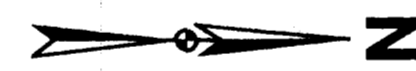
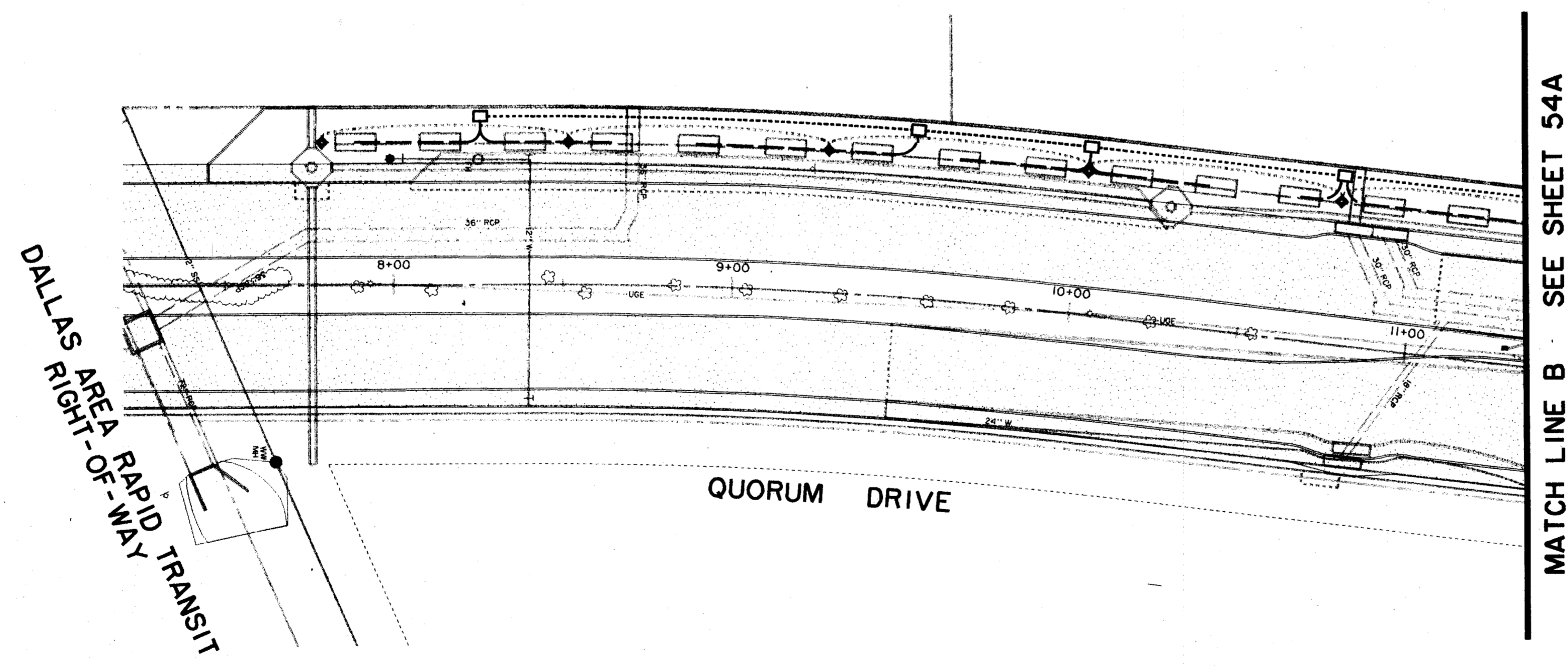
P:\PROJECTS\182204\ADDISON\182204-04-54A.DWG
 DATE: 07/25/96
 DRAWN BY: HZI
 CHECKED BY: KAR
 APPROVED BY: KAR
 PLOT DATE: 07/25/96

THE TOWN OF ADDISON, TEXAS, IS THE OWNER OF THIS PROJECT.
 THE TOWN OF ADDISON, TEXAS, IS NOT RESPONSIBLE FOR THE DESIGN OR CONSTRUCTION OF THIS PROJECT.
 THE TOWN OF ADDISON, TEXAS, IS NOT RESPONSIBLE FOR THE DESIGN OR CONSTRUCTION OF THIS PROJECT.
 THE TOWN OF ADDISON, TEXAS, IS NOT RESPONSIBLE FOR THE DESIGN OR CONSTRUCTION OF THIS PROJECT.



TYPICAL TREE CIRCUIT
CONDUIT INSTALLATION $\triangle 2$
N.T.S.

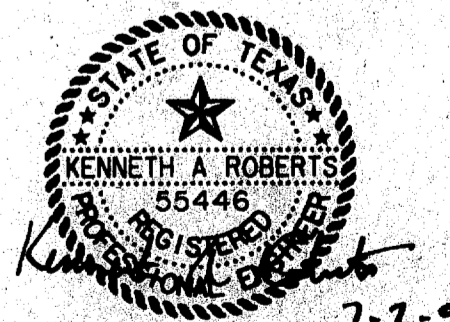
MATCH LINE A SEE SHEET 54A



- LEGEND: $\triangle 1$ $\triangle 2$
- \square PULL BOX
 - 2" SCH. 40 PVC TREE LIGHTING CONDUIT
 - 1" SCH. 40 PVC TREE LIGHTING CONDUIT
 - 3" SCH. 40 PVC TREE LIGHTING CONDUIT

ISSUED FOR CONSTRUCTION
JULY 2, 1996

THE SEAL APPEARING ON THIS DOCUMENT WAS AUTHORIZED BY KENNETH A. ROBERTS, P.E. 55446 ON JULY 2, 1996.



$\triangle 2$ DELETED CONDUIT ON PASCHAL MEWS AND MCKAMY AVENUE EXCEPT ONE FEED TO QUORUM TREES; REVISED LEGEND TO CHANGE $\frac{3}{4}$ " CONDUIT TO 1" CONDUIT; REVISED TYPICAL TREE CONDUIT INSTALLATION DETAIL. 5/15/97

$\triangle 1$ REVISED LEGEND TO CHANGE 1" TO $\frac{3}{4}$ ", CHANGE 3" TO 2", AND ADD A NEW SYMBOLOGY FOR 3" CONDUIT. 9/25/96

TREE LIGHTING CONDUIT PLAN						
ADDISON CIRCLE						
PHASE I PUBLIC INFRASTRUCTURE						
TOWN OF ADDISON, TEXAS						
Huilt-Zollars, Inc./Engineering/Architecture Dallas, Fort Worth, Houston, El Paso, Phoenix, Tustin, Ontario, San Clemente						
DESIGN	DRAWN	APPR.	SCALE	DATE	PROJECT NO.	NO.
HZI	HZI	KAR	1"=30'	JUL 96	1822-04	54B 137

N:\proj\182204\add\AUCITL03.DWG
 Sun May 5 10:46:25 1997
 P:\VCP\182204\add\AUCITL03.DWG
 AutoCAD 2000

T:\AUTOCAD\182204\add\AUCITL03.DWG
 Sun May 5 10:46:25 1997
 P:\VCP\182204\add\AUCITL03.DWG
 AutoCAD 2000

STREET LIGHTING NOTES

1. THE STREET LIGHTING FOR THIS PROJECT WILL CONSIST OF INSTALLATION OF 2" PVC CONDUIT, LIGHT POLE BASES AND PULL BOXES (HANDHOLES) AS A COMPLETE SYSTEM PER DETAILED SPECIFICATIONS. LIGHT POLES, LUMINAIRES, WIRING AND CONNECTION TO POWER SOURCE WILL BE PER T.J.E. ELECTRIC DESIGN.
2. ALL STREET LIGHTING CONDUIT IS TO BE INSTALLED WITH A MINIMUM OF 24 INCHES OF COVER TO THE TOP OF THE PIPE FROM FINISHED PAVEMENT TO AVOID CONFLICT WITH IRRIGATION LINES WHICH WILL BE AT 12" AND 18" DEPTH. CONDUIT SHOULD BE NO DEEPER THAN 36" TO AVOID CONFLICT WITH OTHER UTILITIES.
3. FOR THE PURPOSES OF COORDINATION, LIGHTS TO BE INSTALLED PER THE ELECTRICAL PLANS FOR THIS PROJECT WILL BE THE FOLLOWING:

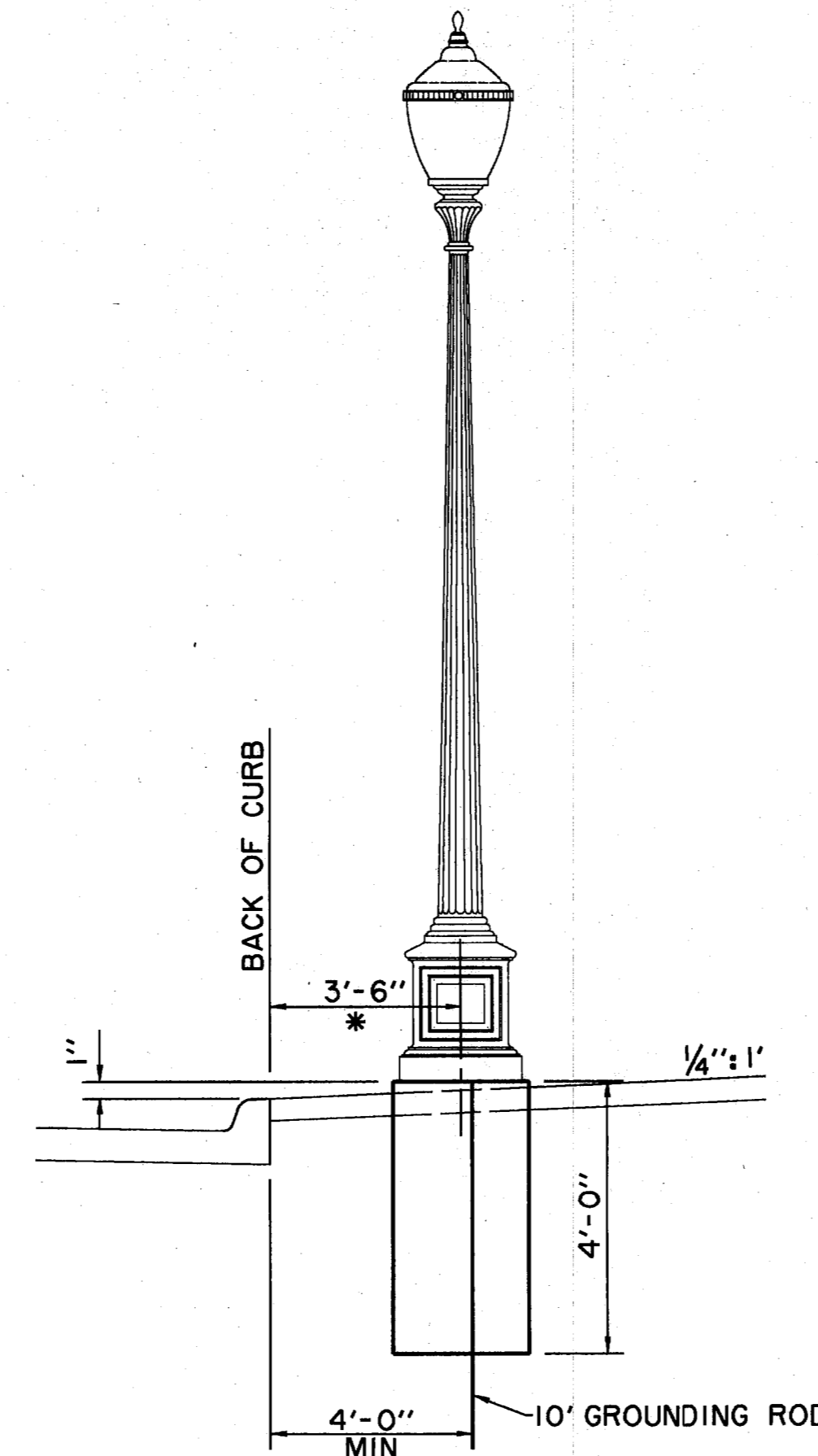
TEXAN STYLE POLE
TUE DESIGNATION: 17 MFND

△ THIS POLE WILL BE INSTALLED WITH A 175 WATT METAL HALIDE LUMINAIRE AND THE GLOBE SHALL BE GLASS INSTEAD OF THE STANDARD POLYCARBONATE.

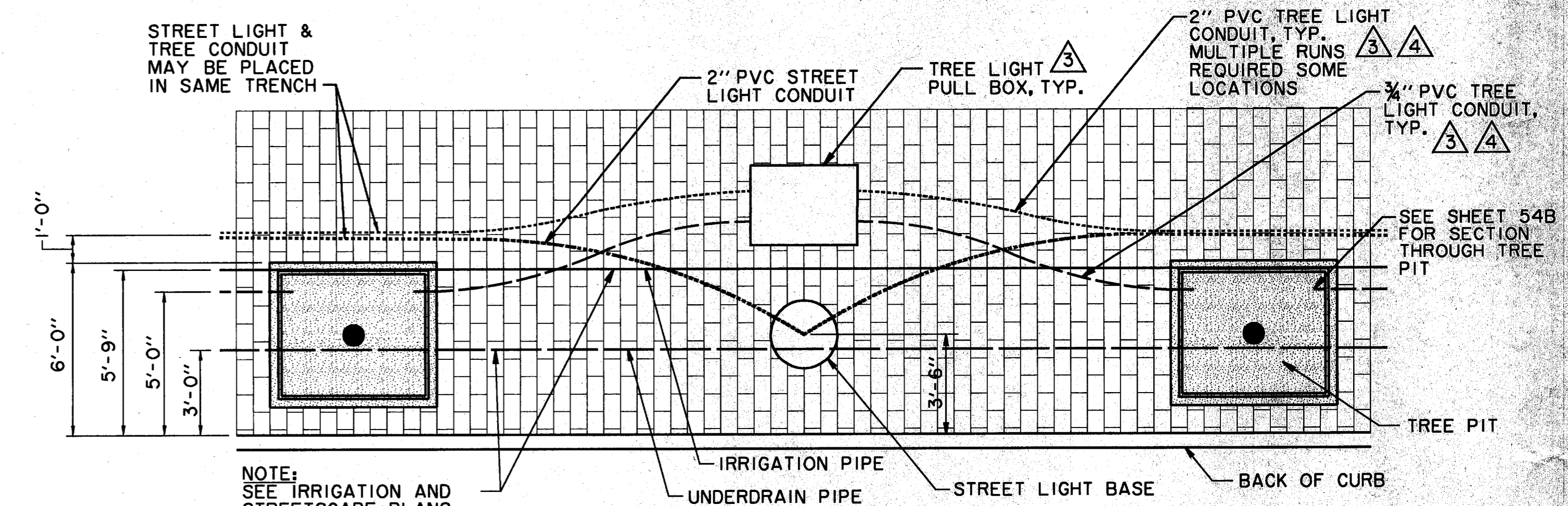
POLES WILL BE PRIMED AND PAINTED AT THE FACTORY.

4. LOCATIONS OF ANY STREET LIGHTS MAY NOT BE ALTERED WITHOUT PERMISSION FROM THE ENGINEER.

5. THE LETTER "C" SHALL BE STAMPED OR CHISELED ON CURB AT ALL LOCATIONS OF CONDUIT UNDER DRIVES AND INTERSECTIONS.



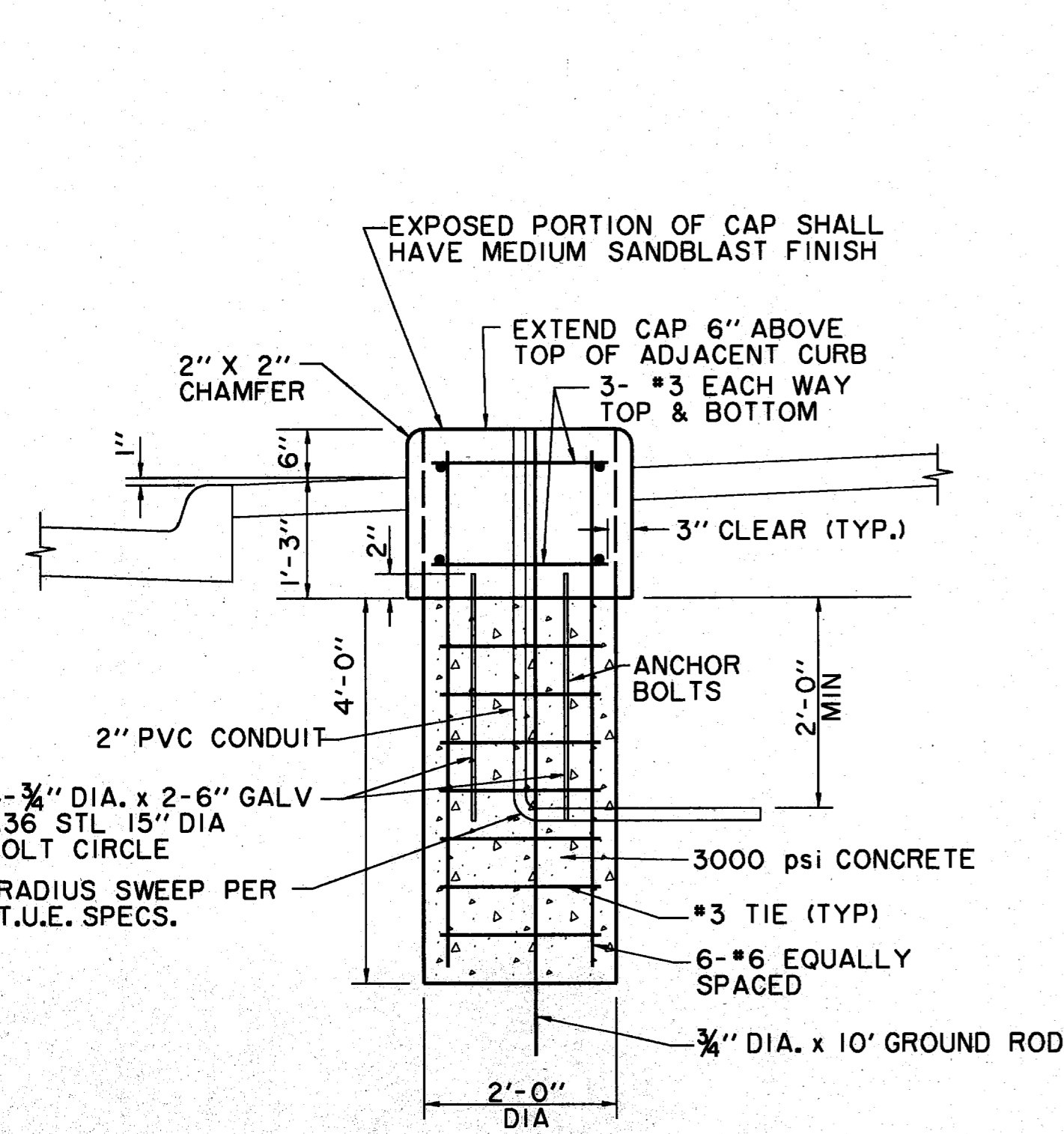
* UNLESS OTHERWISE NOTED IN PLANS
LIGHT FIXTURE PLACEMENT DETAIL
N.T.S.



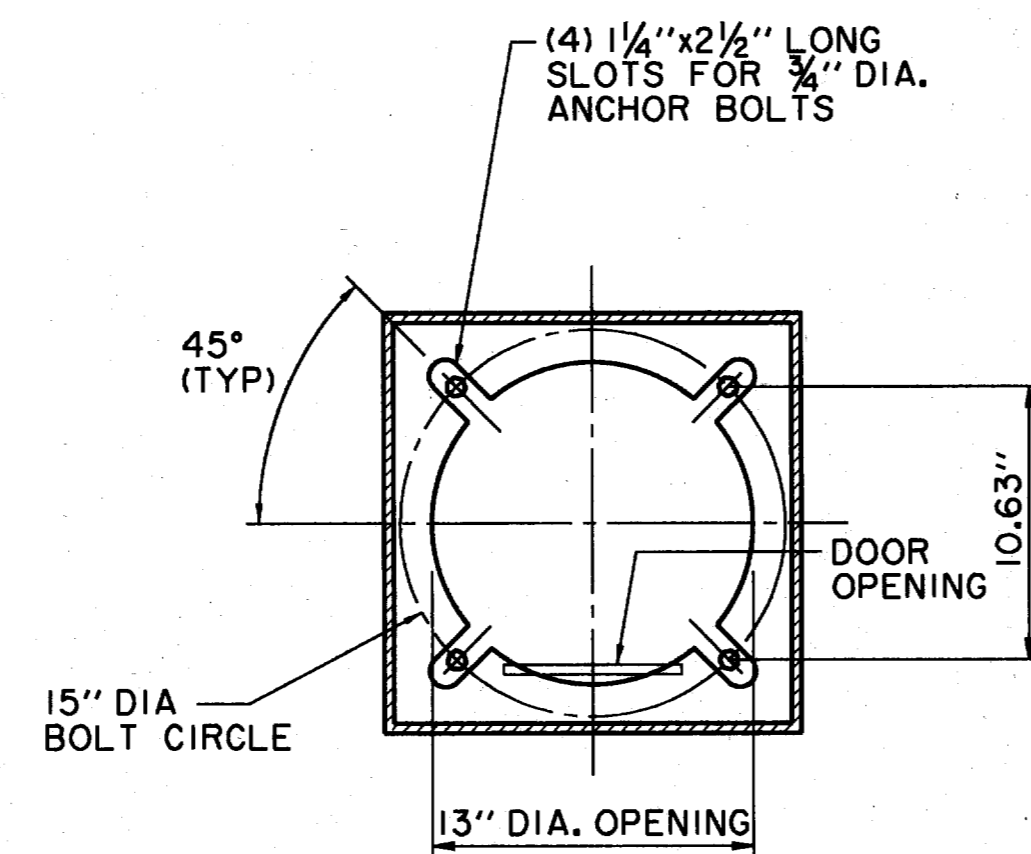
NOTE:
SEE IRRIGATION AND STREETScape PLANS FOR PIPE LOCATIONS

TREE LIGHT AND STREET LIGHT CONDUIT DETAIL
CONDUIT SHALL BE DEFLECTED AROUND TREE PIT LOCATIONS - TYPICAL
N.T.S.

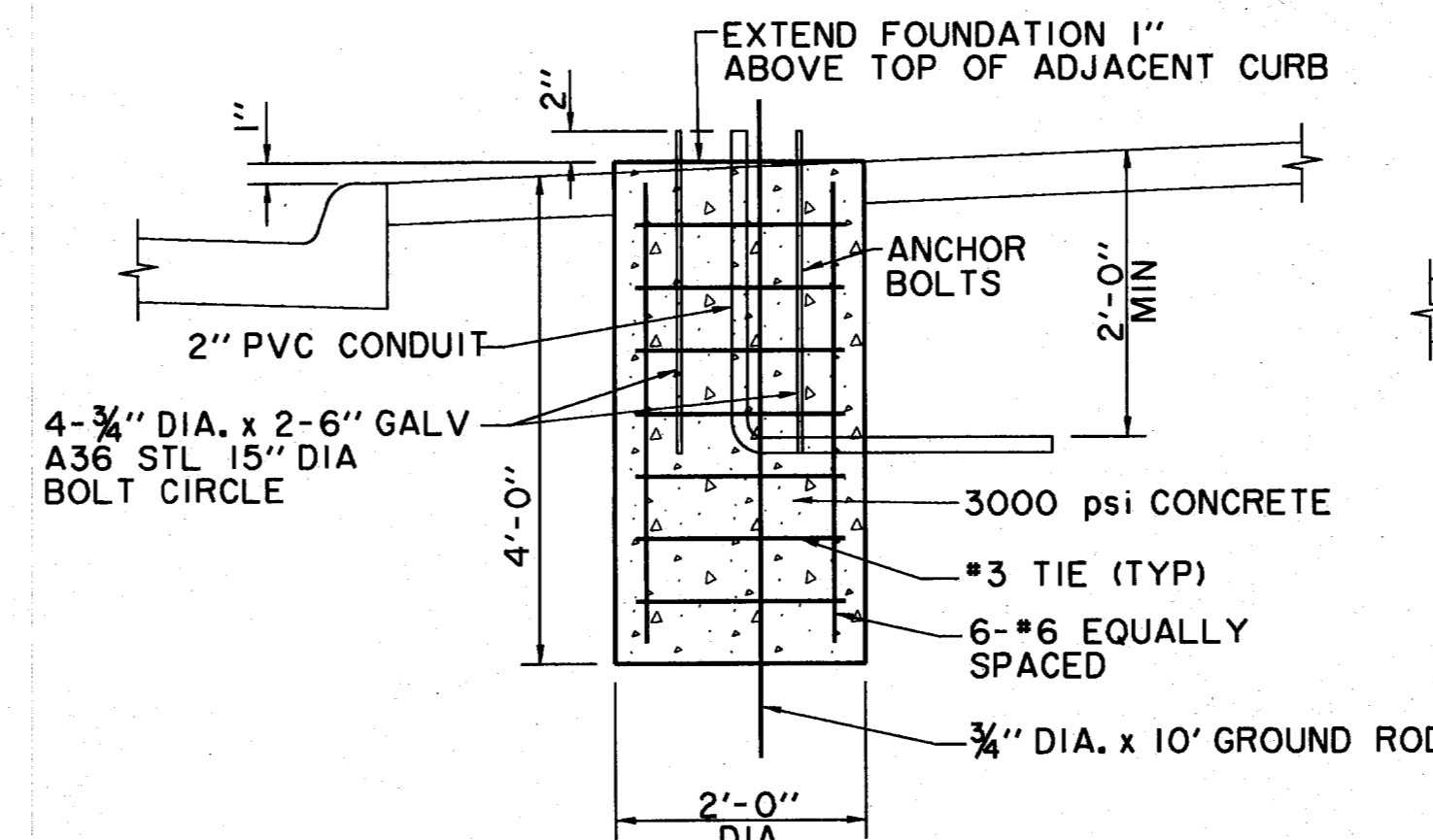
NOTE:
TREE LIGHT CONDUITS BETWEEN TREE PITS SHALL BE DEFLECTED AROUND STREET LIGHT BASE AS REQUIRED.



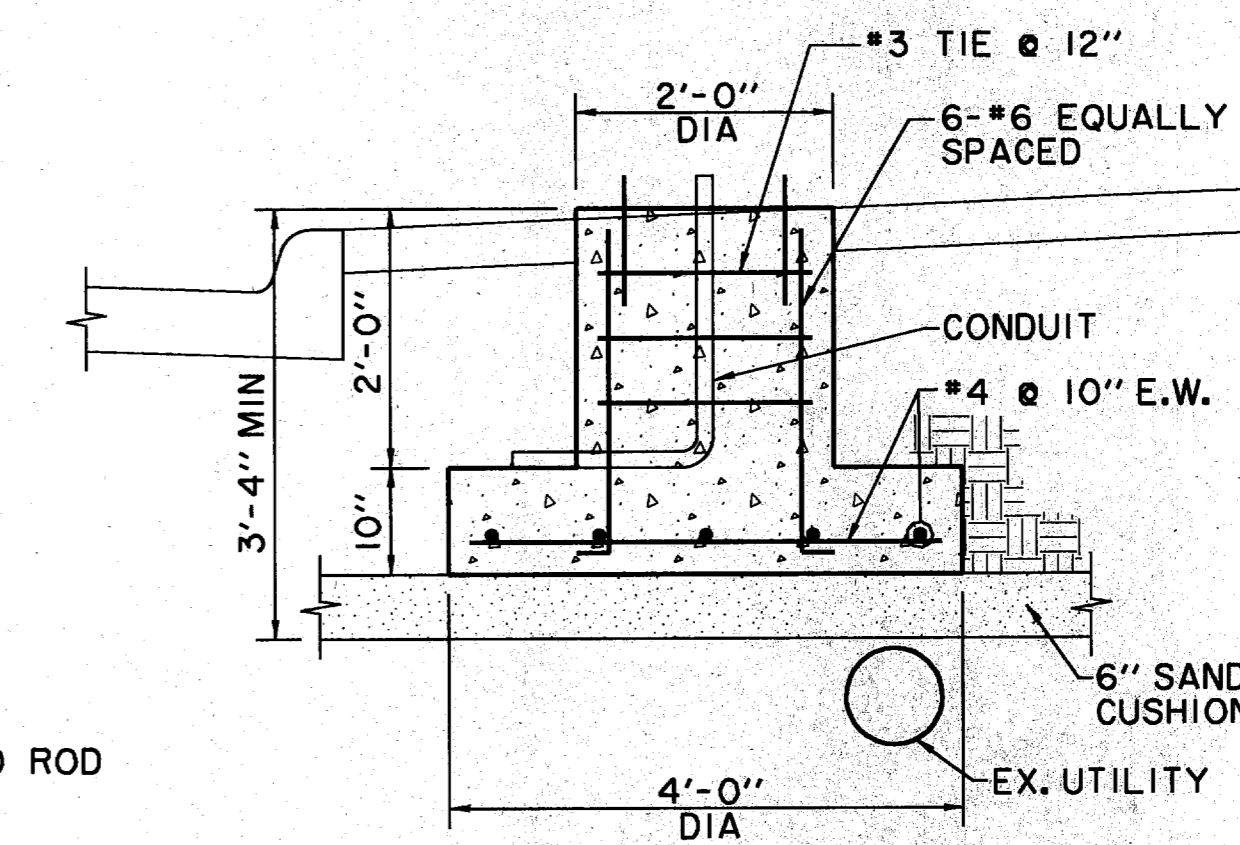
LIGHT FIXTURE FOUNDATION CAP
N.T.S.



POLE ANCHOR DETAIL
N.T.S.



LIGHT FIXTURE FOUNDATION
N.T.S.



ALTERNATE LIGHT FIXTURE FOOTING AT UTILITY CONFLICT
N.T.S.

- △ 4 REVISED TREE LIGHT CONDUIT SIZES 9/25/96
- △ 3 ADDED TREE LIGHT CONDUIT & PULL BOX 6/28/96
- △ 2 ADDENDUM #4 2/16/96
- △ 1 ADDENDUM #2 1/22/96

ISSUED FOR CONSTRUCTION
MARCH 28, 1996

THE SEAL APPEARING ON THIS DOCUMENT WAS AUTHORIZED BY
KENNETH A. ROBERTS, P.E. 55446
ON MARCH 28, 1996.



STREETScape DETAILS

ADDISON CIRCLE

PHASE I PUBLIC INFRASTRUCTURE

TOWN OF ADDISON, TEXAS

Hull11-Zollars, Inc./Engineering/Architecture
Dallas, Fort Worth, Houston, El Paso, Phoenix, Tustin, Ontario, San Clemente

DESIGN	DRAWN	APPR.	SCALE	DATE	PROJECT NO.	NO.
HZI	HZI	KAR	N.T.S.	JAN 96	1822-04	57