

STREET LIGHTING NOTES

1. THE STREET LIGHTING FOR THIS PROJECT WILL CONSIST OF INSTALLATION OF 2" PVC CONDUIT, LIGHT POLE BASES AND PULL BOXES (HANDHOLES) AS A COMPLETE SYSTEM PER DETAILED SPECIFICATIONS. LIGHT POLES, LUMINAIRES, WIRING AND CONNECTION TO POWER SOURCE WILL BE PER T.J.ELECTRIC DESIGN.
2. ALL STREET LIGHTING CONDUIT IS TO BE INSTALLED WITH A MINIMUM OF 24 INCHES OF COVER TO THE TOP OF THE PIPE FROM FINISHED PAVEMENT TO AVOID CONFLICT WITH IRRIGATION LINES WHICH WILL BE AT 12" AND 18" DEPTH. CONDUIT SHOULD BE NO DEEPER THAN 36" TO AVOID CONFLICT WITH OTHER UTILITIES.
3. FOR THE PURPOSES OF COORDINATION, LIGHTS TO BE INSTALLED PER THE ELECTRICAL PLANS FOR THIS PROJECT WILL BE THE FOLLOWING:

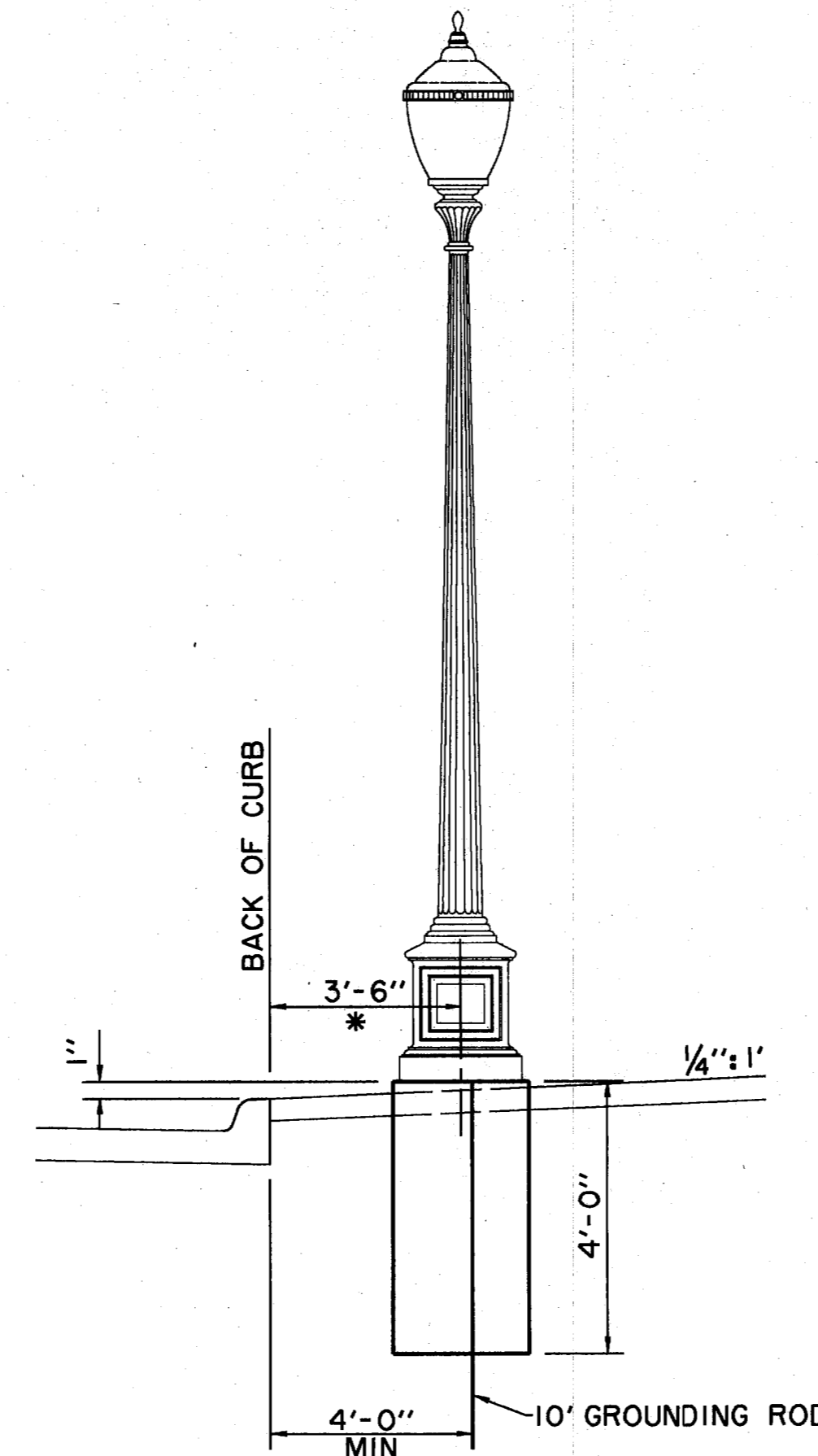
TEXAN STYLE POLE
TUE DESIGNATION: 17 MFND

△ THIS POLE WILL BE INSTALLED WITH A 175 WATT METAL HALIDE LUMINAIRE AND THE GLOBE SHALL BE GLASS INSTEAD OF THE STANDARD POLYCARBONATE.

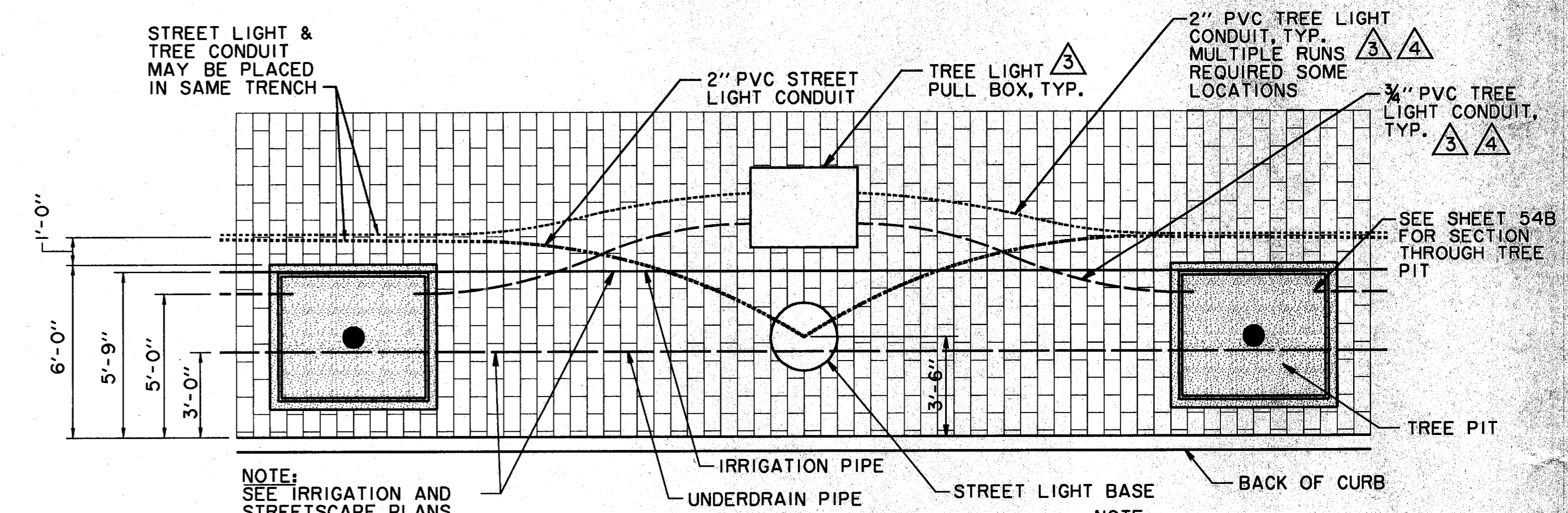
POLES WILL BE PRIMED AND PAINTED AT THE FACTORY.

4. LOCATIONS OF ANY STREET LIGHTS MAY NOT BE ALTERED WITHOUT PERMISSION FROM THE ENGINEER.

5. THE LETTER "C" SHALL BE STAMPED OR CHISELED ON CURB AT ALL LOCATIONS OF CONDUIT UNDER DRIVES AND INTERSECTIONS.



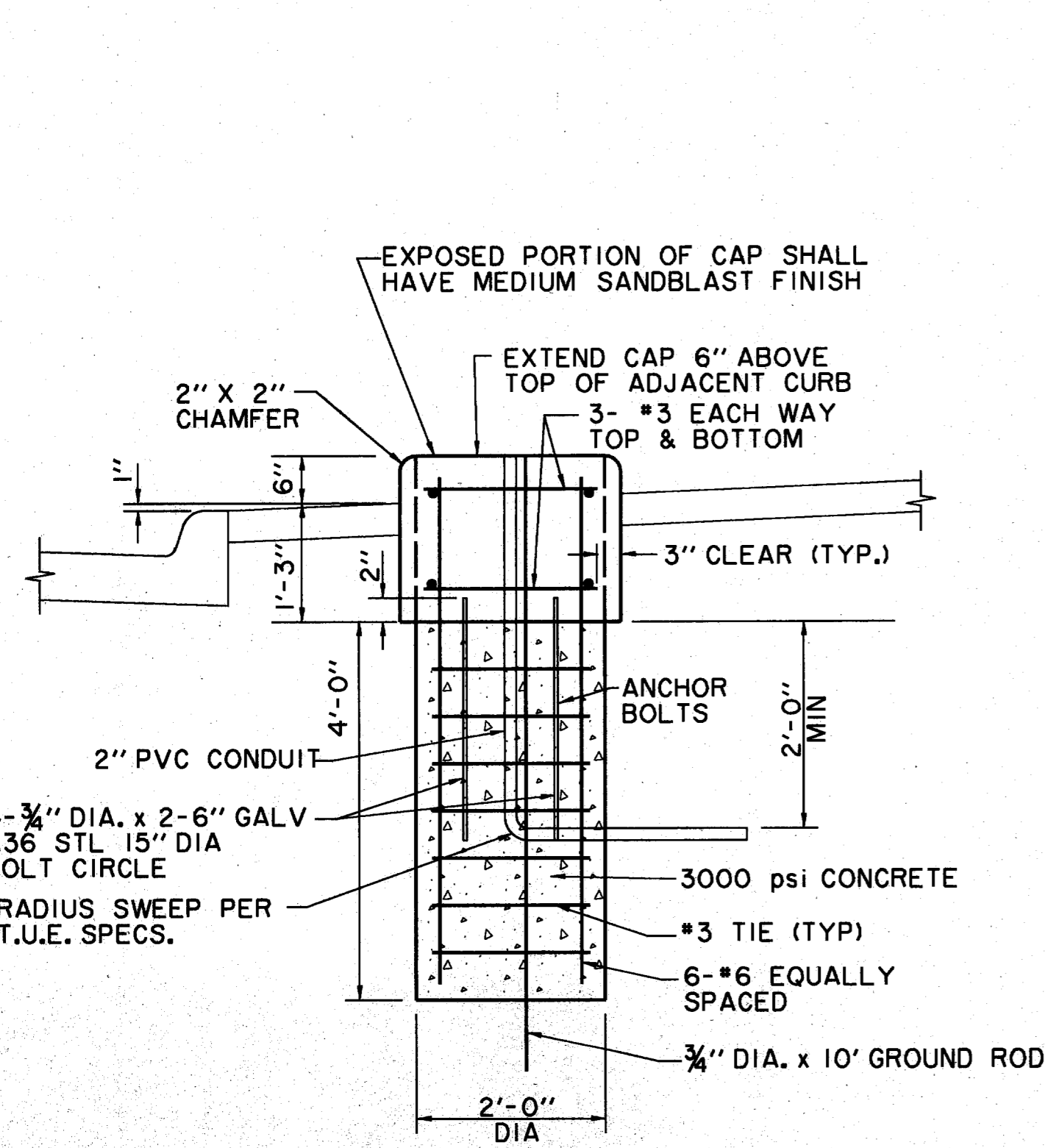
* UNLESS OTHERWISE NOTED IN PLANS
LIGHT FIXTURE PLACEMENT DETAIL
N.T.S.



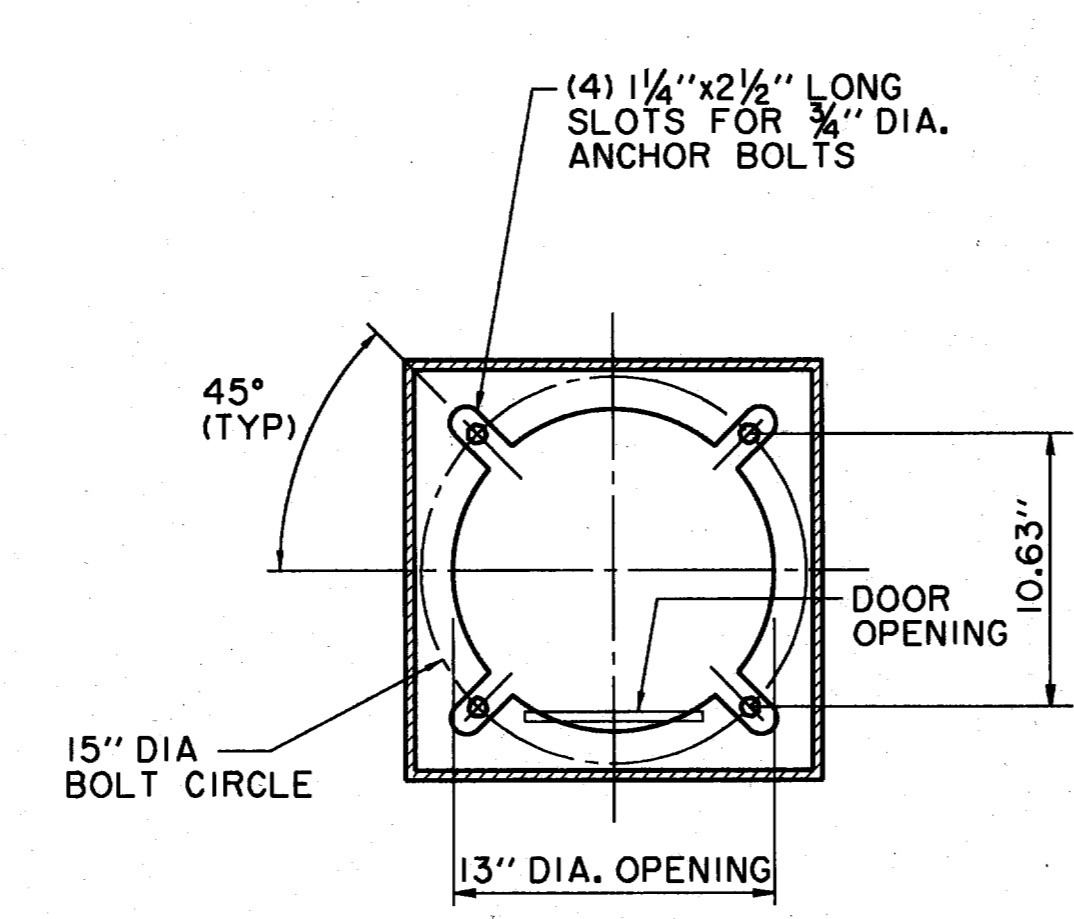
NOTE:
SEE IRRIGATION AND STREETScape PLANS FOR PIPE LOCATIONS

TREE LIGHT AND STREET LIGHT CONDUIT DETAIL
CONDUIT SHALL BE DEFLECTED AROUND TREE PIT LOCATIONS - TYPICAL
N.T.S.

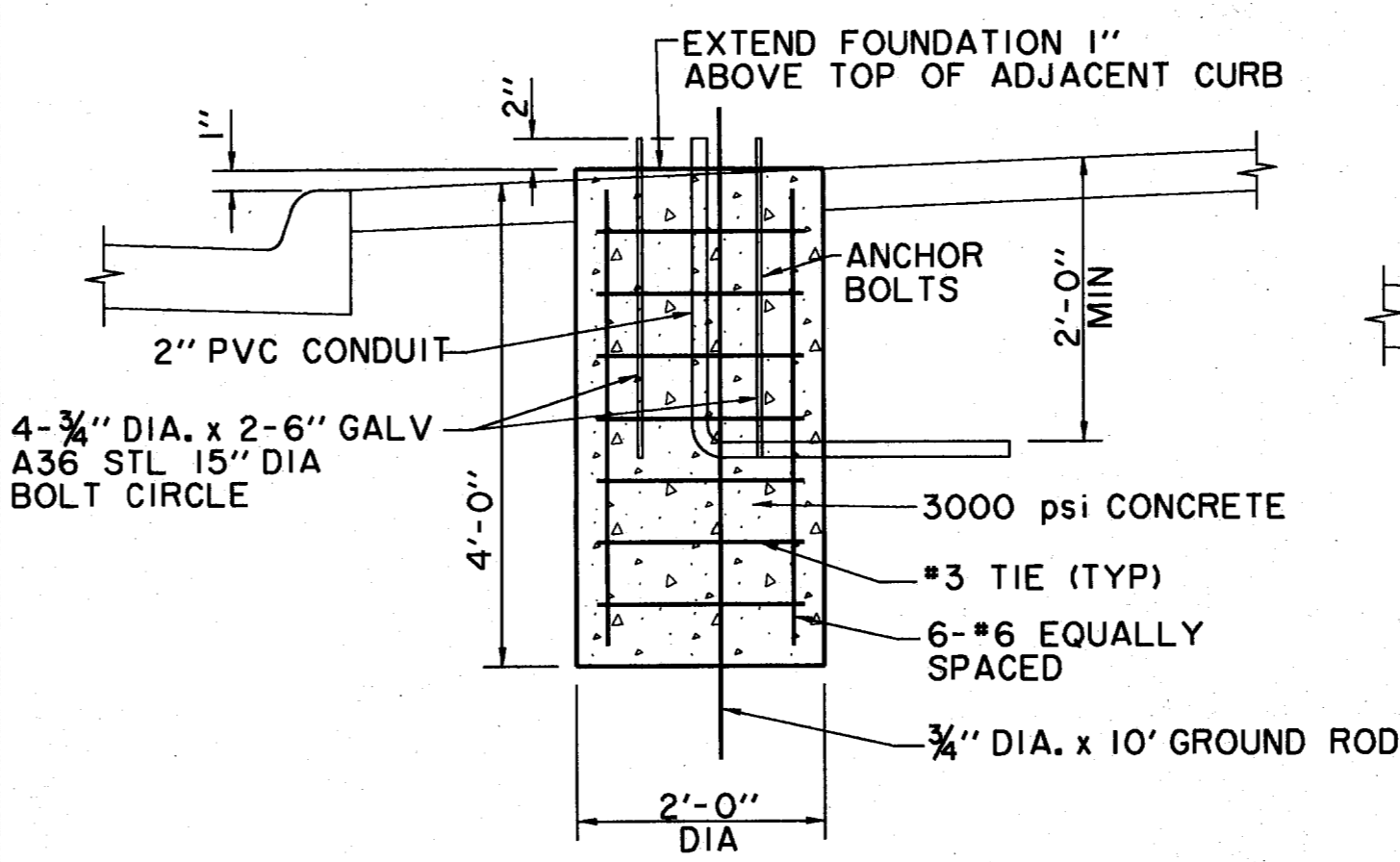
NOTE:
TREE LIGHT CONDUITS BETWEEN TREE PITS SHALL BE DEFLECTED AROUND STREET LIGHT BASE AS REQUIRED.



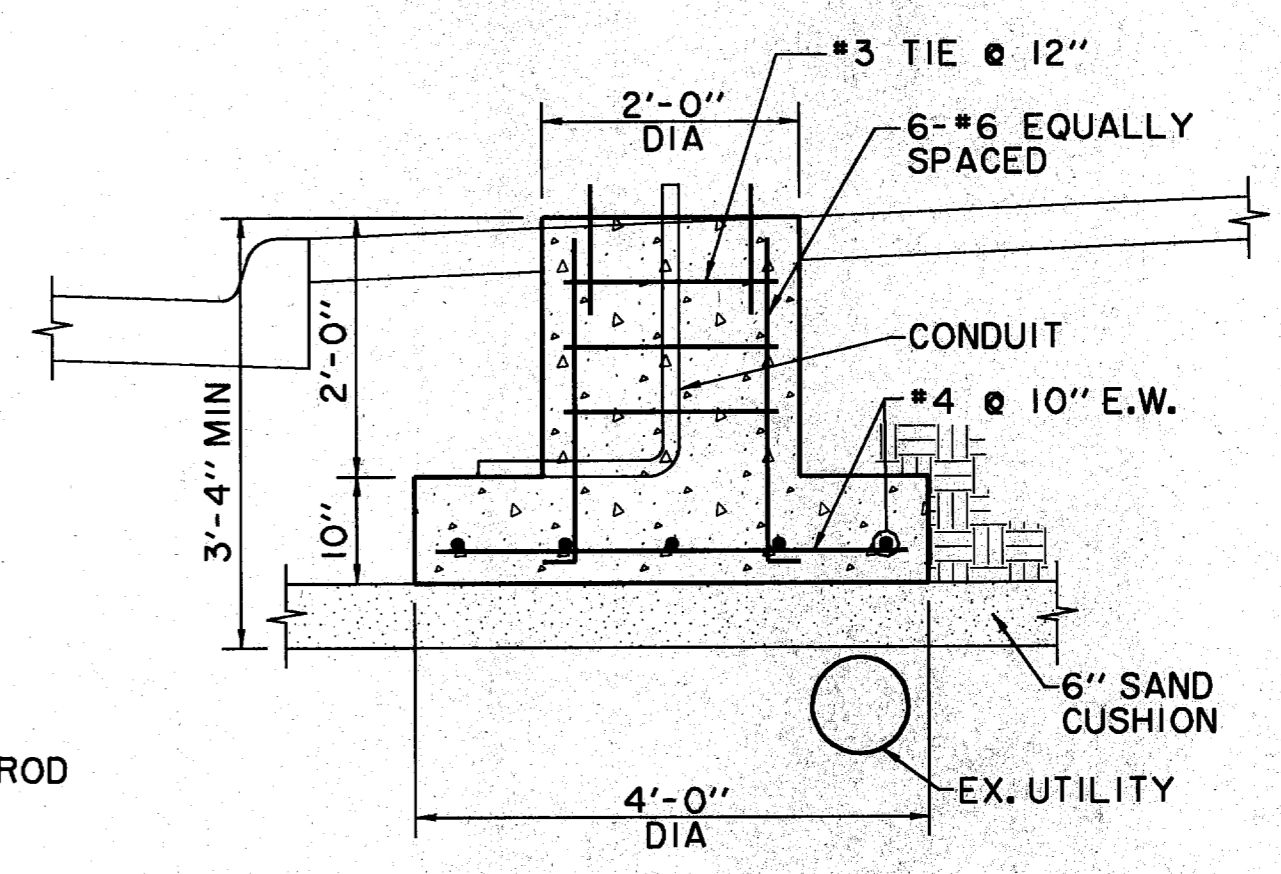
LIGHT FIXTURE FOUNDATION CAP
N.T.S.



POLE ANCHOR DETAIL
N.T.S.



LIGHT FIXTURE FOUNDATION
N.T.S.



ALTERNATE LIGHT FIXTURE FOOTING AT UTILITY CONFLICT
N.T.S.

- △ REVISED TREE LIGHT CONDUIT SIZES 9/25/96
- △ ADDED TREE LIGHT CONDUIT & PULL BOX 6/28/96
- △ ADDENDUM #4 2/16/96
- △ ADDENDUM #2 1/22/96

ISSUED FOR CONSTRUCTION
MARCH 28, 1996

THE SEAL APPEARING ON THIS DOCUMENT WAS AUTHORIZED BY
KENNETH A. ROBERTS, P.E. 55446
ON MARCH 28, 1996.



STREETScape DETAILS						
ADDISON CIRCLE						
PHASE I PUBLIC INFRASTRUCTURE						
TOWN OF ADDISON, TEXAS						
Hull11-Zollars, Inc./Engineering/Architecture Dallas, Fort Worth, Houston, El Paso, Phoenix, Tustin, Ontario, San Clemente						
DESIGN	DRAWN	APPR.	SCALE	DATE	PROJECT NO.	NO.
HZI	HZI	KAR	N.T.S.	JAN 96	1822-04	57
						137