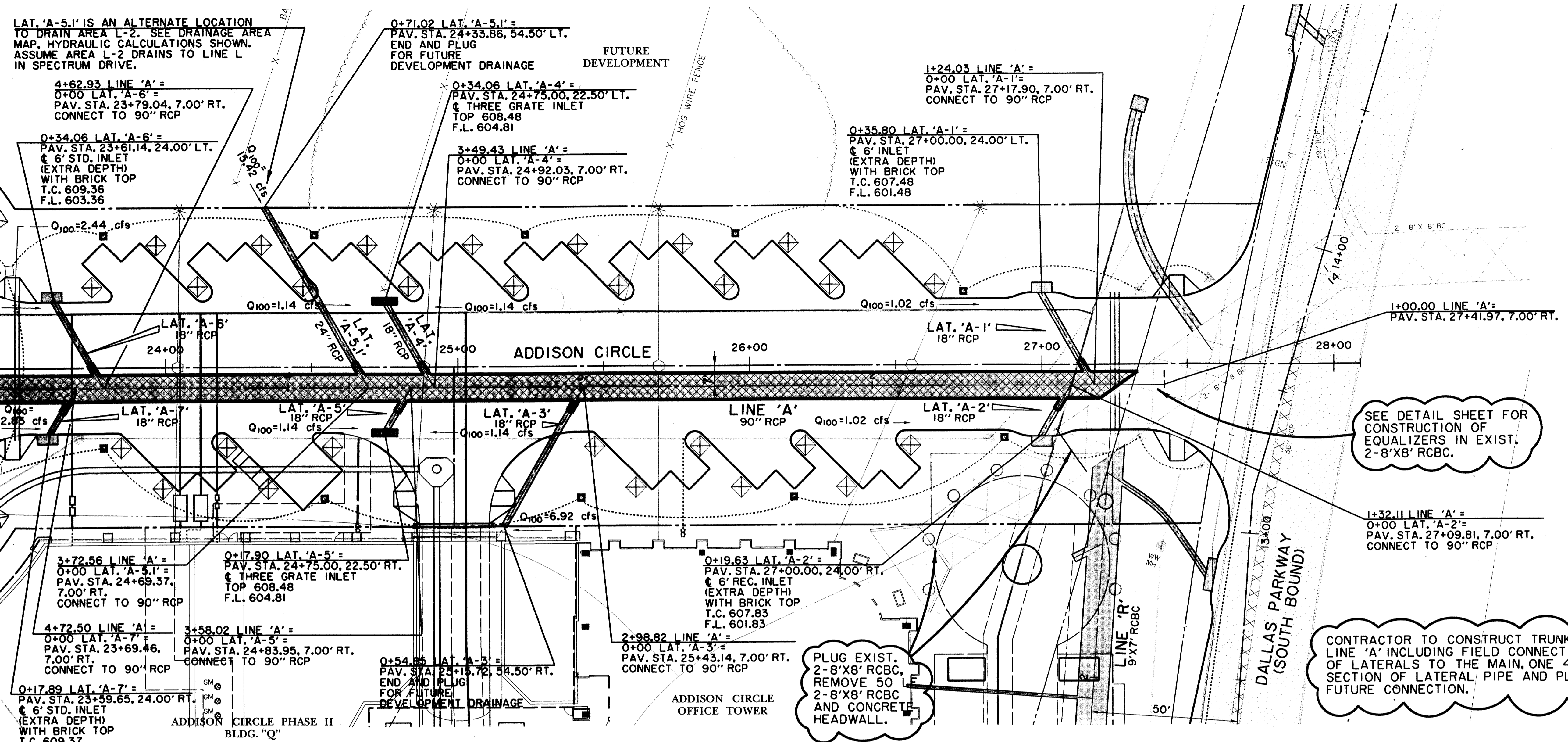


MATCH LINE PAV. STA. 23+41.96 = LINE 'A' STA. 5+00



**RECORD DRAWING:**  
 THIS DRAWING HAS BEEN MODIFIED FROM THE ORIGINAL DESIGN DRAWINGS TO REFLECT THE FIELD CHANGES THAT OCCURRED DURING CONSTRUCTION WHICH WERE DOCUMENTED AND FURNISHED TO THE ENGINEER BY THE CONTRACTOR. BASED ON THIS INFORMATION AND THE ENGINEER'S OBSERVATION OF CERTAIN CONSTRUCTION ACTIVITIES, TO THE BEST OF THE ENGINEER'S KNOWLEDGE AND BELIEF, THE PROJECT IS CONSTRUCTED IN CONFORMANCE WITH THE PLANS AND SPECIFICATIONS AND WILL FUNCTION AS DESIGNED.

**LEGEND**

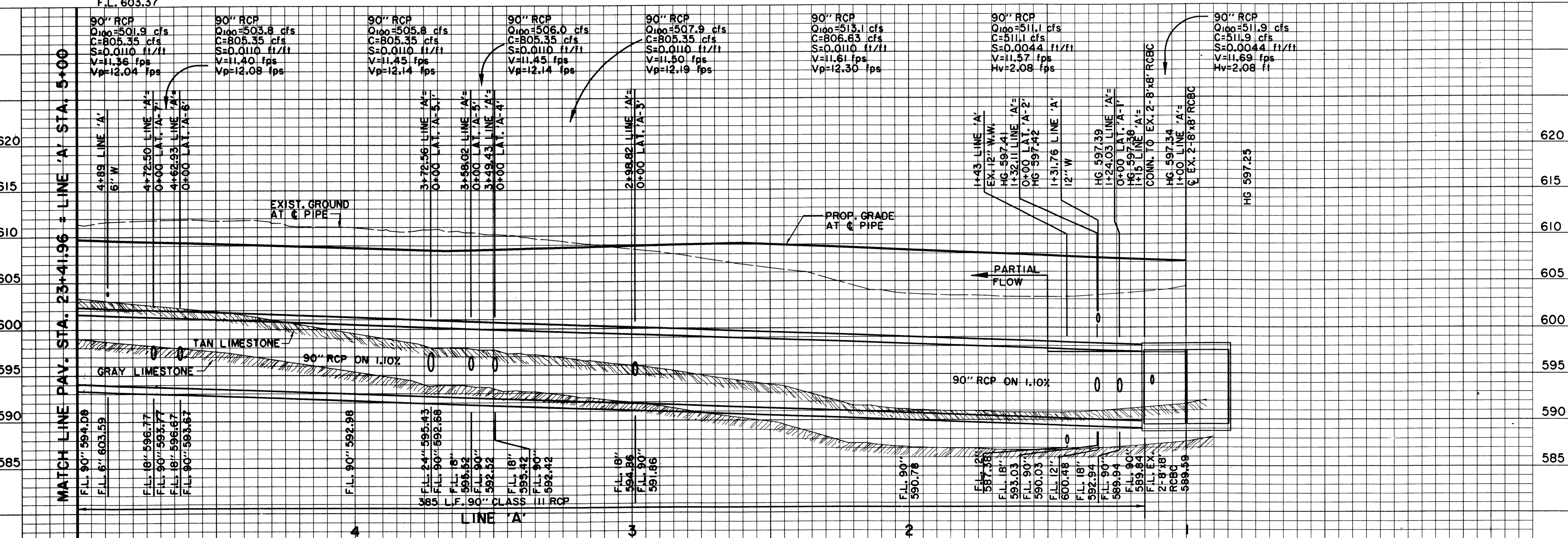
ELECTRIC — OHE —	48" RCP	MISC.
⊙ LIGHT POLE	EX. STORM SEWER	
PP POWER POLE	CHAIN LINK FENCE	
— GUY WIRE	WOOD FENCE	
TELEPHONE — T —	EXISTING ASPHALT	
TELEPHONE MANHOLE	EXISTING DIRT OR GRAVEL	
TELEPHONE PEDESTAL	EX. CONCRETE	
TELEPHONE SIGN	TREE/TREE LINE	
GAS — G —	EXISTING CURB	
GAS METER	PROP. CURB	
GAS SIGN	PROP. EDGE OF PAVEMENT NO CURB	
LAND USE	PROP. CENTERLINE	
RAILROAD SIGN	EX. PROPERTY LINE	
SIGN	PROP. R.O.W.	
SURVEY	PROP. INLET	
FOUND IRON ROD	PROP. PAVEMENT	
BENCHMARK	T.C.	TOP OF CURB
WASTEWATER — WW —	CR	CURB RETURN
WASTEWATER MANHOLE	EX. G	EXISTING GUTTER
CLEANOUT	EX. T.C.	EXISTING TOP OF CURB
WATER — W —	B-20	BORING LOCATION
FIRE HYDRANT		
METER		
WATER VALVE		

SEE DETAIL SHEET FOR CONSTRUCTION OF EQUALIZERS IN EXIST. 2-8'X8' RCBC.

1+32.11 LINE 'A' = 0+00 LAT. 'A-2' = PAV. STA. 27+09.81, 7.00' RT. CONNECT TO 90" RCP

CONTRACTOR TO CONSTRUCT TRUNK LINE 'A' INCLUDING FIELD CONNECTION OF LATERALS TO THE MAIN, ONE 4 FOOT SECTION OF LATERAL PIPE AND PLUG FOR FUTURE CONNECTION.

PLUG EXIST. 2-8'X8' RCBC, REMOVE 50 LB 2-8'X8' RCBC AND CONCRETE HEADWALL.



**BENCHMARKS:**

BM#5  
 1' CUT AT NORTHWEST CORNER OF NORTH HDWL. OF 7'X7' BOX CULVERT UNDER RAILROAD, 180' WEST OF DALLAS PARKWAY SOUTHBOUND, ELEV. 610.49

BM#6  
 1' CUT AT CENTER FRONT OF 18" REC. INLET, SECOND INLET NORTH OF RAILROAD TRACKS ON THE WEST SIDE OF DALLAS PARKWAY SOUTHBOUND, ELEV. 605.67

THE SEAL APPEARING ON THIS DOCUMENT WAS AUTHORIZED BY DAVID E. MEYERS, P.E. 81512 ON 10/27/97

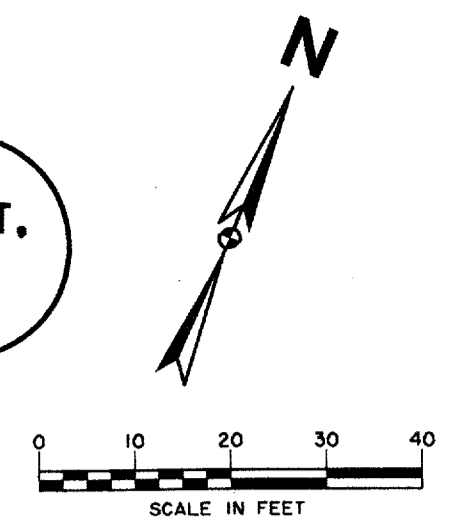
DATE	DESCRIPTION	REF. NO.
10/27/97	RECORD DRAWING	N/A
6/16/97	ISSUED FOR CONSTRUCTION	N/A
6/2/97	ISSUED FOR BID	N/A

**STORM WATER PLAN & PROFILE**  
 LINE 'A' STA. 1+00 TO STA. 5+00  
**ADDISON CIRCLE**  
 PHASE II MASS GRADING  
 TOWN OF ADDISON, TEXAS

Hui11-Zollars, Inc./Engineering/Architecture  
 Dallas, Fort Worth, Houston, El Paso, Phoenix, Tustin, Ontario

DESIGN	DRAWN	APPR.	SCALE	DATE	PROJECT NO.	NO.
HZ1	HZ1	DEM	H: 1"=20' V: 1"=6'	JUNE 97	01-1822-34	SWI

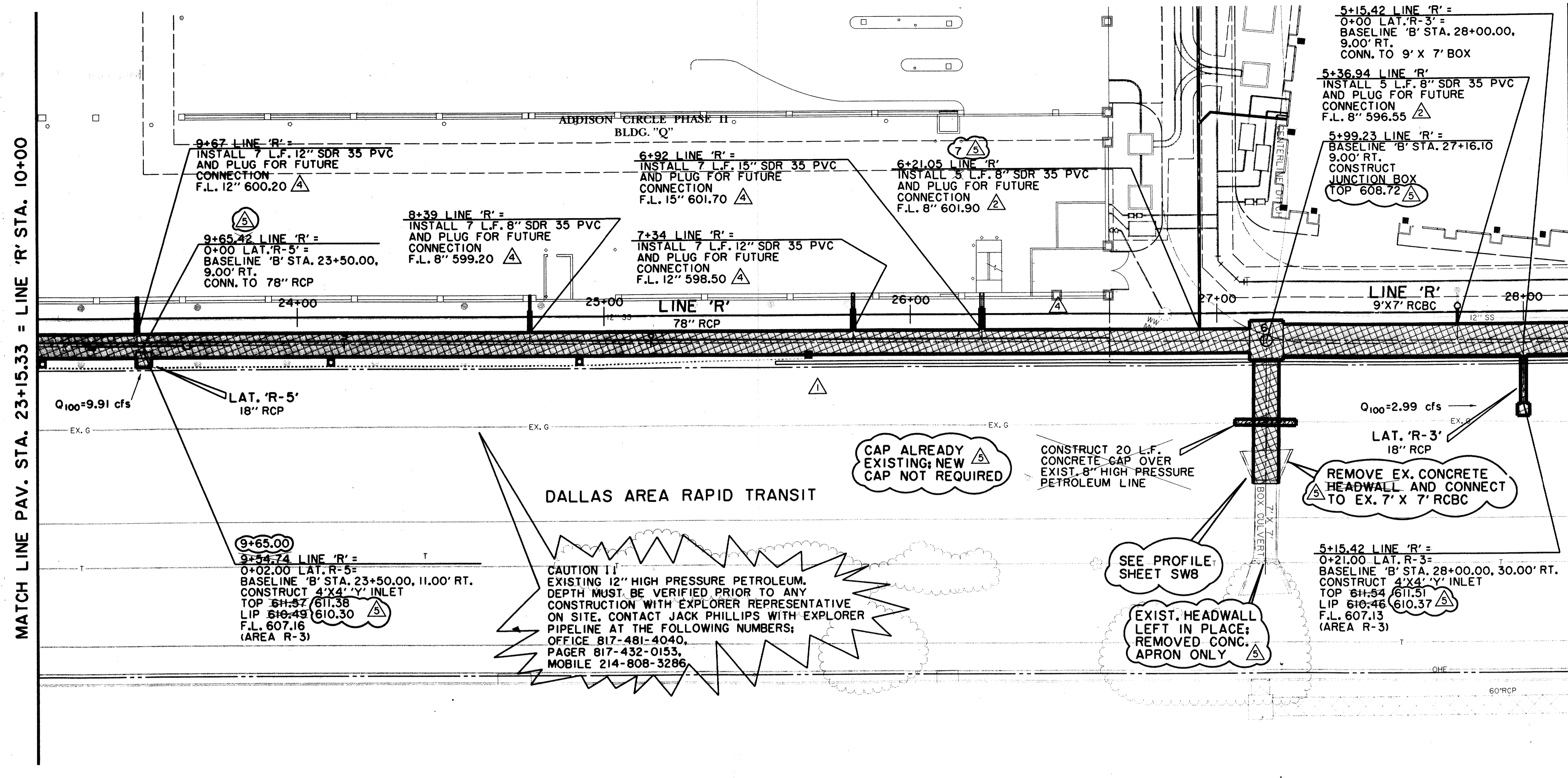
H:\PROJECTS\011822\1\DWG\ACMGD603.DWG  
 PLOT DATE: 7/10/98 10:00  
 PLOT BY: J. W. HUI  
 PLOT SCALE: 1"=20'  
 PLOT SHEET: 1 OF 1  
 PLOT TITLE: STORM WATER PLAN & PROFILE  
 PLOT USER: J. W. HUI  
 PLOT DEVICE: HPGLASER  
 PLOT STATUS: OK  
 PLOT MESSAGE:



CONTRACTOR TO CONSTRUCT TRUNK LINE 'R', 7' X 7' RCBC CONNECTION TO RAILROAD CULVERT. FIELD CONNECTION OF LATERALS, LATERAL PIPE AS DENOTED, DROP INLETS AND PLUG FOR FUTURE CONNECTION.

MATCH LINE PAV. STA. 23+15.33 = LINE 'R' STA. 10+00

MATCH LINE PAV. STA. 28+15.33 = LINE 'R' STA. 5+00



RECORD DRAWING:

THIS DRAWING HAS BEEN MODIFIED FROM THE ORIGINAL DESIGN DRAWINGS TO REFLECT THE FIELD CHANGES THAT OCCURRED DURING CONSTRUCTION WHICH WERE DOCUMENTED AND FURNISHED TO THE ENGINEER BY THE CONTRACTOR. BASED ON THIS INFORMATION AND THE ENGINEER'S OBSERVATION OF CERTAIN CONSTRUCTION ACTIVITIES TO THE BEST OF THE ENGINEER'S KNOWLEDGE AND BELIEF, THE PROJECT IS CONSTRUCTED IN CONFORMANCE WITH THE PLANS AND SPECIFICATIONS AND WILL FUNCTION AS DESIGNED.

**LEGEND**

ELECTRIC — OHE	48" RCP	MISC.
○ LIGHT POLE	— EX. STORM SEWER	— CHAIN LINK FENCE
PP POWER POLE	— WOOD FENCE	— EXISTING ASPHALT
— GUY WIRE	— EXISTING DIRT OR GRAVEL	— EXISTING CURB
TELEPHONE — T	— EX. CONCRETE	— TREE/TREE LINE
TELEPHONE MANHOLE	— EXISTING CURB	— PROP. CURB
TELEPHONE PEDESTAL	— EX. PROPERTY LINE	— PROP. EDGE OF PAVEMENT NO CURB
TELEPHONE SIGN	— PROP. CENTERLINE	— EX. PROPERTY LINE
GAS — G	— PROP. R.O.W.	— PROP. INLET
GM GAS METER	— T.P.	— TOP OF PAVEMENT
GS GAS SIGN	— T.C.	— TOP OF CURB
LAND USE	— CR	— CURB RETURN
RR RAILROAD SIGN	— EX. G	— EXISTING GUTTER
SIGN	— EX. T.C.	— EXISTING TOP OF CURB
SURVEY	B-20	— BORING LOCATION
FOUND IRON ROD	— EXISTING BRICKS	— PAVEMENT REMOVAL
BENCHMARK		
WASTEWATER — WW		
WASTEWATER MANHOLE		
CLEANOUT		
WATER — W		
FIRE HYDRANT		
METER		
WATER VALVE		

**CAUTION!**  
EXISTING 12" HIGH PRESSURE PETROLEUM. DEPTH MUST BE VERIFIED PRIOR TO ANY CONSTRUCTION WITH EXPLORER REPRESENTATIVE ON SITE. CONTACT JACK PHILLIPS WITH EXPLORER PIPELINE AT THE FOLLOWING NUMBERS:  
OFFICE 817-481-4040,  
PAGER 817-432-0153,  
MOBILE 214-808-3286

CAP ALREADY EXISTING; NEW CAP NOT REQUIRED

CONSTRUCT 20 L.F. CONCRETE GAP OVER EXIST. 8" HIGH PRESSURE PETROLEUM LINE

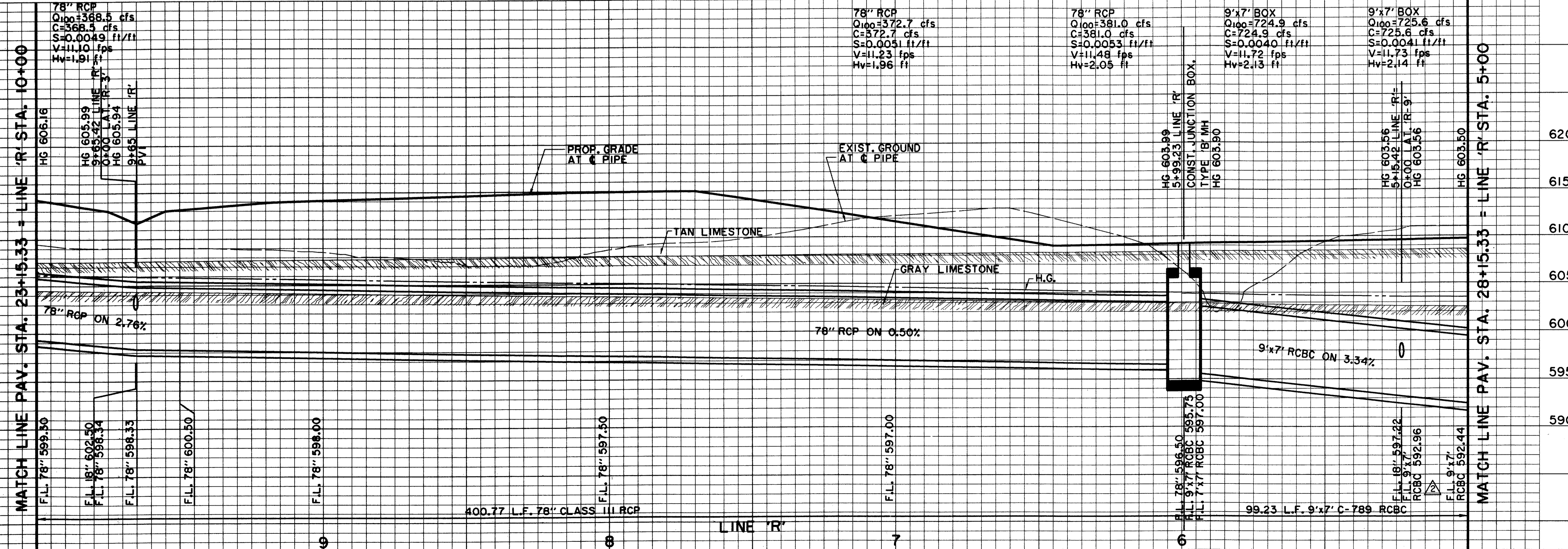
REMOVE EX. CONCRETE HEADWALL AND CONNECT TO EX. 7' X 7' RCBC

SEE PROFILE SHEET SW8

EXIST. HEADWALL LEFT IN PLACE; REMOVED CONC. APRON ONLY

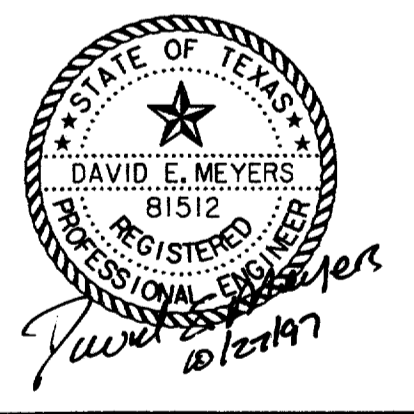
MATCH LINE PAV. STA. 23+15.33 = LINE 'R' STA. 10+00

MATCH LINE PAV. STA. 28+15.33 = LINE 'R' STA. 5+00



**BENCHMARKS:**  
BM#5 'I' CUT AT NORTHWEST CORNER OF NORTH HDWL. OF 7'X7' BOX CULVERT UNDER RAILROAD, 180' WEST OF DALLAS PARKWAY SOUTHBOUND. ELEV. 610.49  
BM#6 'I' CUT AT CENTER FRONT OF 18" REC. INLET, SECOND INLET NORTH OF RAILROAD TRACKS ON THE WEST SIDE OF DALLAS PARKWAY SOUTHBOUND. ELEV. 605.67

THE SEAL APPEARING ON THIS DOCUMENT WAS AUTHORIZED BY DAVID E. MEYERS, P.E. 81512 ON 10/27/97



DATE	DESCRIPTION	REF. NO.
10/27/97	RECORD DRAWING	5
8/26/97	ADDED PVC STUB-OUT; REMOVED LAT. 'R-4'	4
8/4/97	REVISED ELEVATION ON BENCHMARK #5	3
7/24/97	ADDED PVC STUB-OUT; REVISED F.L. 9'X7'	2
6/16/97	ISSUED FOR CONSTRUCTION	N/A
6/10/97	ADDENDUM NO. 1; REVISED LINE 'R' ALIGNMENT	1
6/2/97	ISSUED FOR BID	N/A

**STORM WATER PLAN & PROFILE**  
LINE 'R' STA. 5+00 TO STA. 10+00

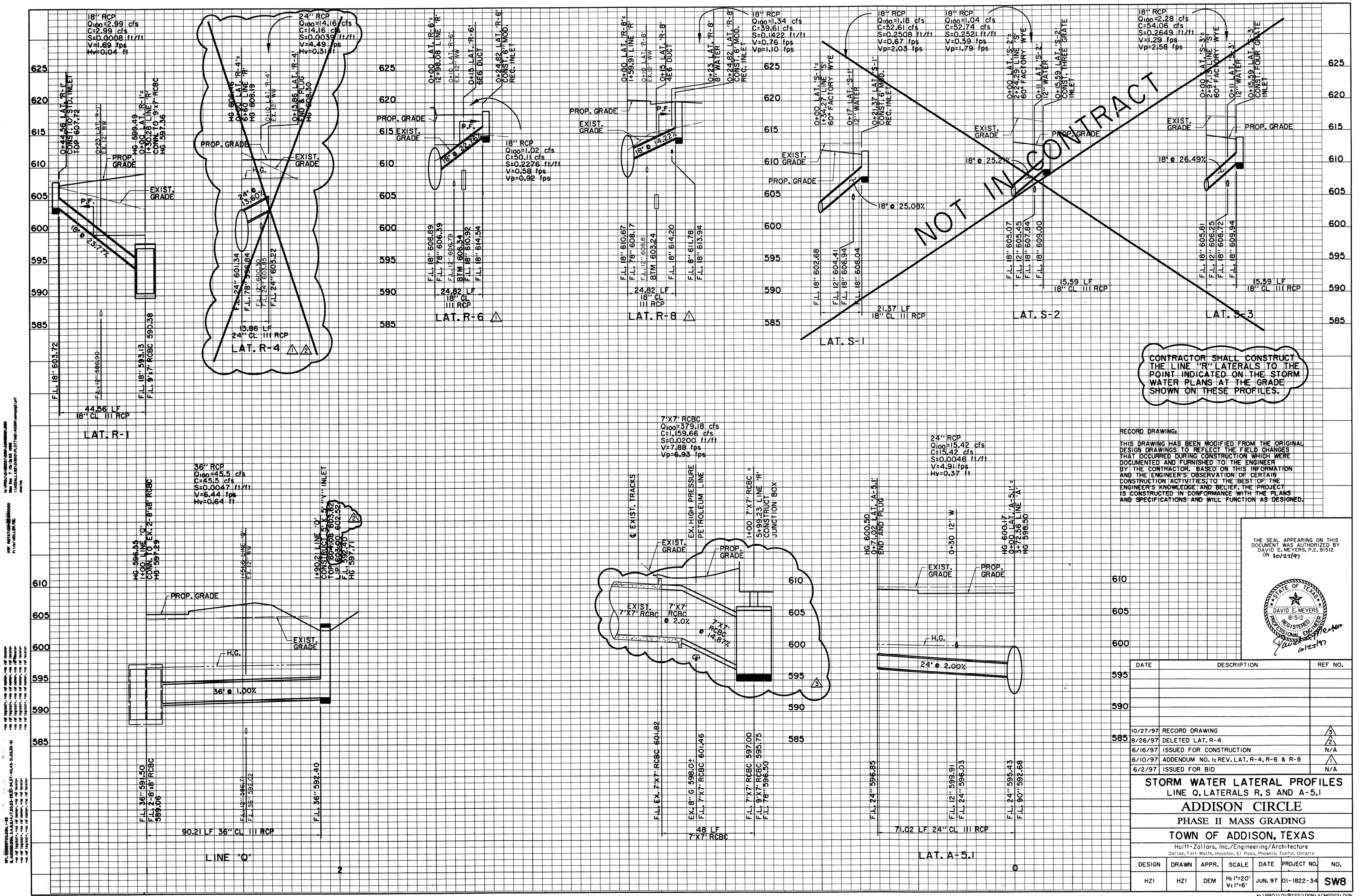
**ADDISON CIRCLE**  
PHASE II MASS GRADING  
TOWN OF ADDISON, TEXAS

Hui1-Zollars, Inc./Engineering/Architecture  
Dallas, Fort Worth, Houston, El Paso, Phoenix, Tustin, Ontario

DESIGN	DRAWN	APPR.	SCALE	DATE	PROJECT NO.	NO.
HZI	HZI	DEM	H:V=20' V:1'=6"	JUN. 97	01-1822-34	SW5

HUI1-ZOLLARS, INC. ENGINEERING/ARCHITECTURE  
 1100 WEST WILSON AVENUE, SUITE 100  
 FORT WORTH, TEXAS 76104-4000  
 TEL: 817-335-1100 FAX: 817-335-1101  
 WWW.HUI1-ZOLLARS.COM

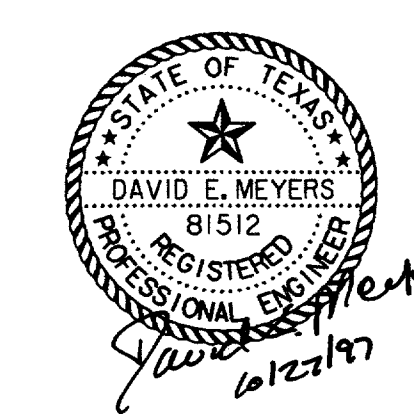
HUI1-ZOLLARS, INC. ENGINEERING/ARCHITECTURE  
 1100 WEST WILSON AVENUE, SUITE 100  
 FORT WORTH, TEXAS 76104-4000  
 TEL: 817-335-1100 FAX: 817-335-1101  
 WWW.HUI1-ZOLLARS.COM



ALL INFORMATION CONTAINED HEREIN IS UNCLASSIFIED EXCEPT WHERE SHOWN OTHERWISE  
 DATE 10/27/97 BY 60322/ML/STP

RECORD DRAWING:  
 THIS DRAWING HAS BEEN MODIFIED FROM THE ORIGINAL DESIGN DRAWINGS TO REFLECT THE FIELD CHANGES THAT OCCURRED DURING CONSTRUCTION WHICH WERE DOCUMENTED AND FURNISHED TO THE ENGINEER BY THE CONTRACTOR. BASED ON THIS INFORMATION AND THE ENGINEER'S OBSERVATION OF CERTAIN CONSTRUCTION ACTIVITIES TO THE BEST OF THE ENGINEER'S KNOWLEDGE AND BELIEF, THE PROJECT IS CONSTRUCTED IN CONFORMANCE WITH THE PLANS AND SPECIFICATIONS AND WILL FUNCTION AS DESIGNED.

THE SEAL APPEARING ON THIS DOCUMENT WAS AUTHORIZED BY DAVID E. MEYERS, P.E. 81512 ON 10/27/97

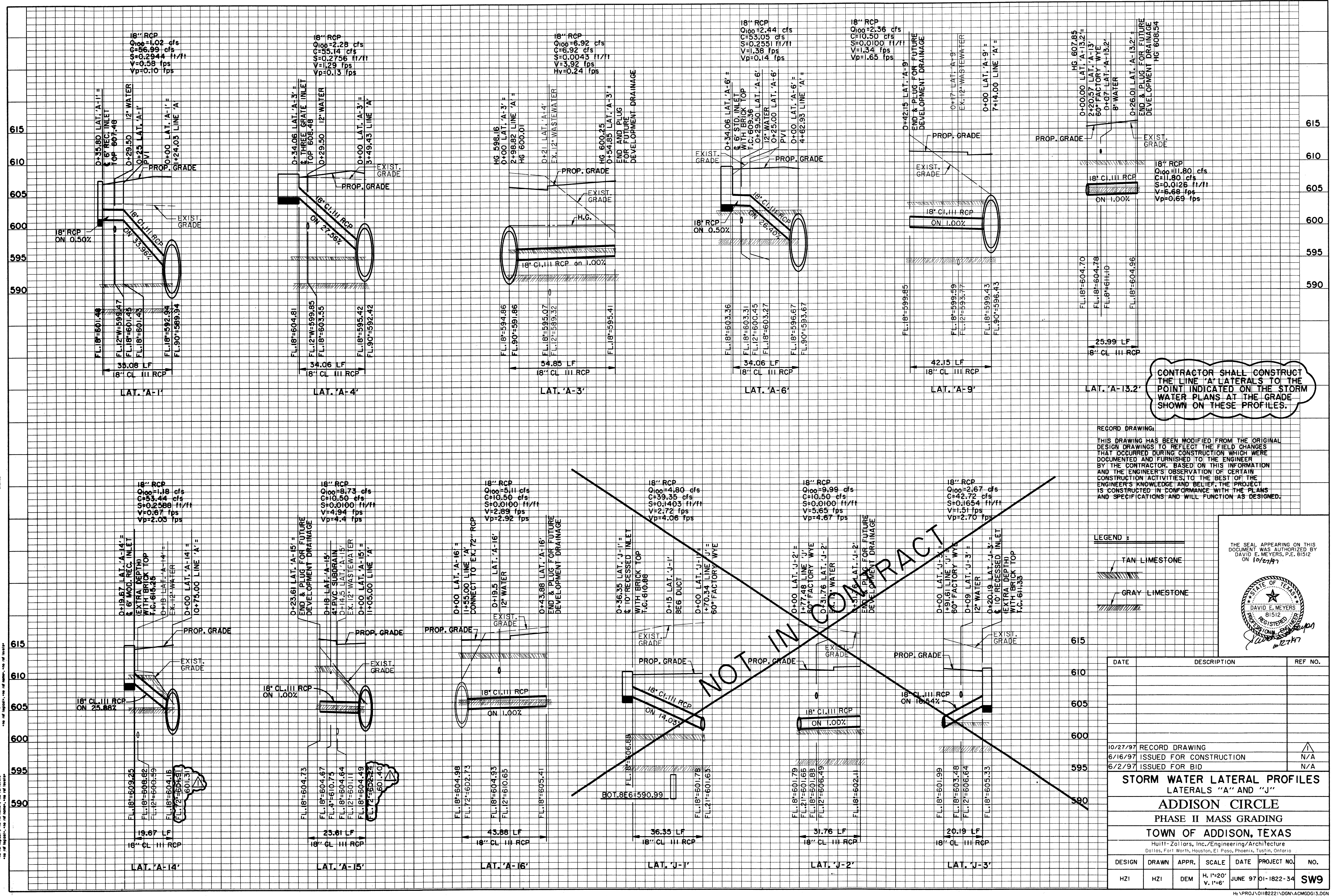


DATE	DESCRIPTION	REF NO.
10/27/97	RECORD DRAWING	3
8/26/97	DELETED LAT. R-4	2
6/16/97	ISSUED FOR CONSTRUCTION	N/A
6/10/97	ADDENDUM NO. 1; REV. LAT. R-4, R-6 & R-8	1
6/2/97	ISSUED FOR BID	N/A

<b>STORM WATER LATERAL PROFILES</b> LINE O, LATERALS R, S AND A-5.1						
<b>ADDISON CIRCLE</b>						
PHASE II MASS GRADING						
TOWN OF ADDISON, TEXAS						
Hufft-Zollars, Inc./Engineering/Architecture Dallas, Fort Worth, Houston, El Paso, Phoenix, Tustin, Ontario						
DESIGN	DRAWN	APPR.	SCALE	DATE	PROJECT NO.	NO.
HZ1	HZ1	DEM	H: 1"=20' V: 1"=6'	JUN. 97	01-1822-34	SW8

H:\PROJECTS\2000\ADDISON\ADDISON\ADDISON.DWG  
 DATE: 10/27/97  
 DRAWN BY: HZI  
 CHECKED BY: DPM

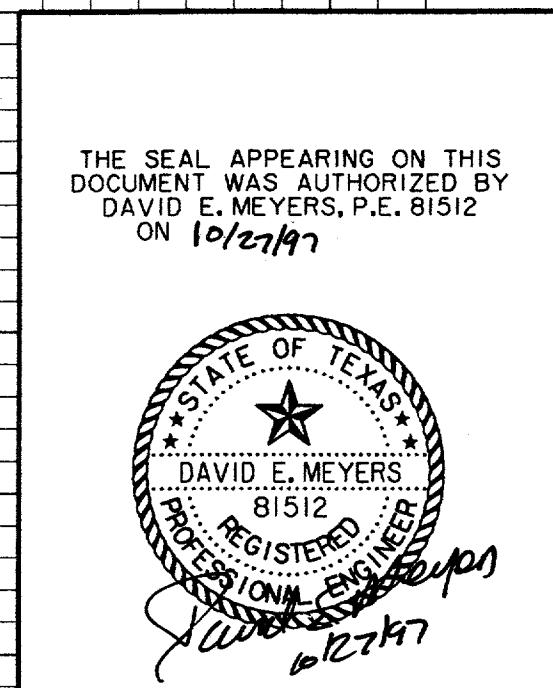
H:\PROJECTS\2000\ADDISON\ADDISON\ADDISON.DWG  
 DATE: 10/27/97  
 DRAWN BY: HZI  
 CHECKED BY: DPM



CONTRACTOR SHALL CONSTRUCT THE LINE 'A' LATERALS TO THE POINT INDICATED ON THE STORM WATER PLANS AT THE GRADE SHOWN ON THESE PROFILES.

RECORD DRAWING:  
 THIS DRAWING HAS BEEN MODIFIED FROM THE ORIGINAL DESIGN DRAWINGS TO REFLECT THE FIELD CHANGES THAT OCCURRED DURING CONSTRUCTION WHICH WERE DOCUMENTED AND FURNISHED TO THE ENGINEER BY THE CONTRACTOR. BASED ON THIS INFORMATION AND THE ENGINEER'S OBSERVATION OF CERTAIN CONSTRUCTION ACTIVITIES TO THE BEST OF THE ENGINEER'S KNOWLEDGE AND BELIEF, THE PROJECT IS CONSTRUCTED IN ACCORDANCE WITH THE PLANS AND SPECIFICATIONS AND WILL FUNCTION AS DESIGNED.

LEGEND:  
 TAN LIMESTONE  
 GRAY LIMESTONE



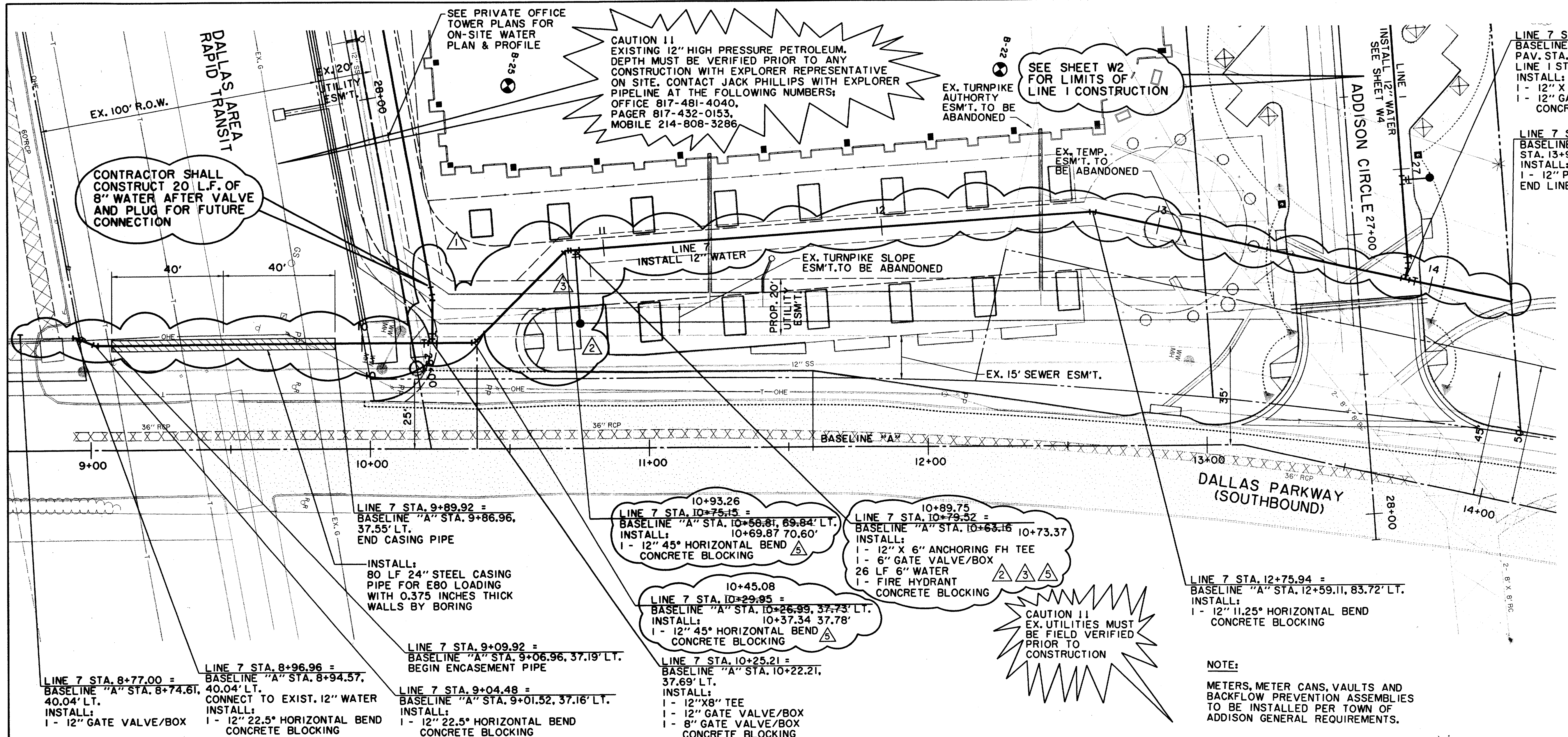
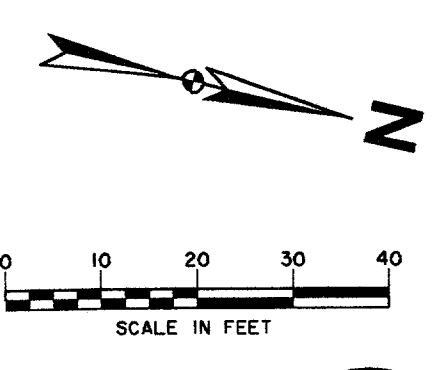
DATE	DESCRIPTION	REF. NO.
10/27/97	RECORD DRAWING	▲
6/16/97	ISSUED FOR CONSTRUCTION	N/A
6/2/97	ISSUED FOR BID	N/A

**STORM WATER LATERAL PROFILES**  
 LATERALS "A" AND "J"

**ADDISON CIRCLE**  
 PHASE II MASS GRADING  
 TOWN OF ADDISON, TEXAS

Hui11-Zollars, Inc./Engineering/Architecture  
 Dallas, Fort Worth, Houston, El Paso, Phoenix, Tustin, Ontario

DESIGN	DRAWN	APPR.	SCALE	DATE	PROJECT NO.	NO.
HZI	HZI	DPM	H. 1"=20' V. 1"=6'	JUNE 97	01-1822-34	SW9



CONTRACTOR SHALL CONSTRUCT 20 L.F. OF 8" WATER AFTER VALVE AND PLUG FOR FUTURE CONNECTION

CAUTION !! EXISTING 12" HIGH PRESSURE PETROLEUM. DEPTH MUST BE VERIFIED PRIOR TO ANY CONSTRUCTION WITH EXPLORER REPRESENTATIVE ON SITE. CONTACT JACK PHILLIPS WITH EXPLORER PIPELINE AT THE FOLLOWING NUMBERS: OFFICE 817-481-4040, PAGER 817-432-0153, MOBILE 214-808-3286

SEE SHEET W2 FOR LIMITS OF LINE 1 CONSTRUCTION

LINE 7 STA. 13+90.63 = BASELINE "A" STA. 13+56.88, 70.00' LT. = PAV. STA. 27+17.36, 17.08' LT. = LINE 1 STA 27+39.51  
 INSTALL:  
 1 - 12" X 12" TEE  
 1 - 12" GATE VALVE/BOX  
 CONCRETE BLOCKING

LINE 7 STA. 14+29.66 = BASELINE "A" STA. 13+95.91, 70.00' LT.  
 INSTALL:  
 1 - 12" PLUG  
 END LINE 7

CONTRACTOR TO CONSTRUCT LINE 7 AND A PORTION OF LINE 1 AS PART OF THIS CONTRACT

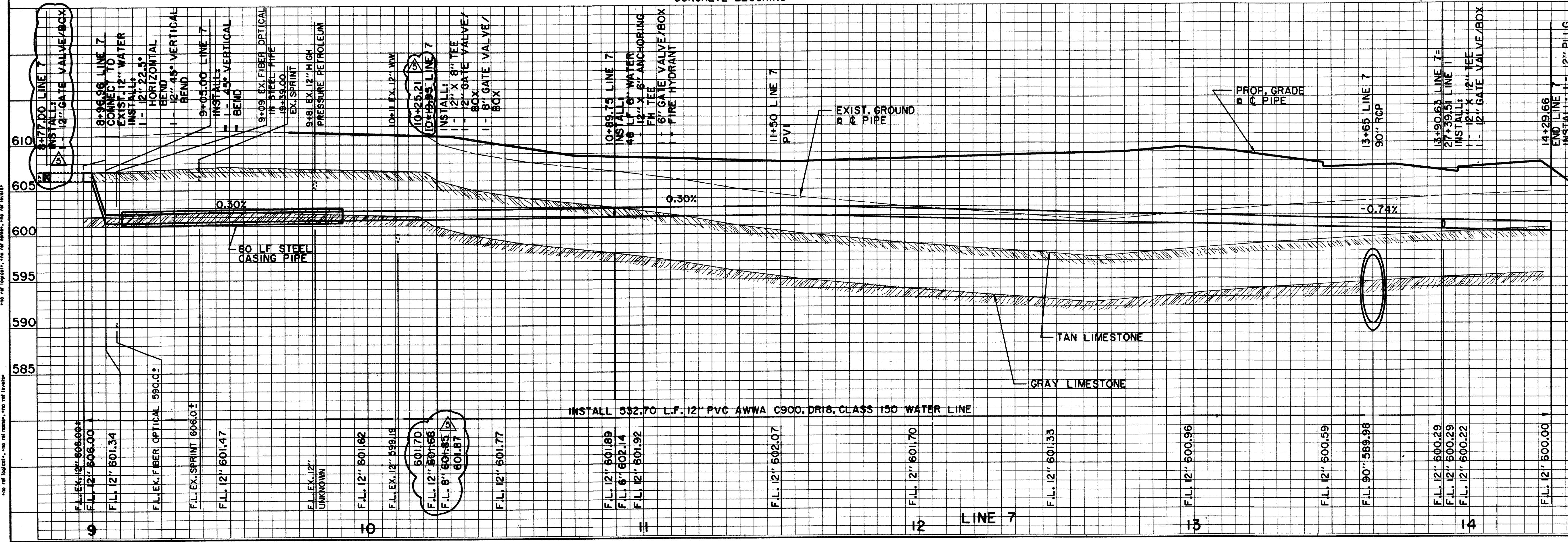
RECORD DRAWING:  
 THIS DRAWING HAS BEEN MODIFIED FROM THE ORIGINAL DESIGN DRAWINGS TO REFLECT THE FIELD CHANGES THAT OCCURRED DURING CONSTRUCTION WHICH WERE DOCUMENTED AND FURNISHED TO THE ENGINEER BY THE CONTRACTOR. BASED ON THIS INFORMATION AND THE ENGINEER'S OBSERVATION OF CERTAIN CONSTRUCTION ACTIVITIES, TO THE BEST OF THE ENGINEER'S KNOWLEDGE AND BELIEF, THE PROJECT IS CONSTRUCTED IN CONFORMANCE WITH THE PLANS AND SPECIFICATIONS AND WILL FUNCTION AS DESIGNED.

**LEGEND**

— OHE —	48" RCP	MISC.
⊙	EX. STORM SEWER	
⊙	CHAIN LINK FENCE	
⊙	WOOD FENCE	
⊙	EXISTING ASPHALT	
⊙	EXISTING DIRT OR GRAVEL	
⊙	EX. CONCRETE	
⊙	TREE/TREE LINE	
⊙	EXISTING CURB	
⊙	PROP. CURB	
⊙	PROP. EDGE OF PAVEMENT NO CURB	
⊙	EX. PROPERTY LINE	
⊙	PROP. CENTERLINE	
⊙	PROP. P.O.W.	
⊙	PROP. INLET	
⊙	T.P.	TOP OF PAVEMENT
⊙	T.C.	TOP OF CURB
⊙	CR	CURB RETURN
⊙	EX. G	EXISTING GUTTER
⊙	EX. T.C.	EXISTING TOP OF CURB
⊙	B-20	BORING LOCATION
⊙		EXISTING BRICKS
⊙		PAVEMENT REMOVAL

NOTE:  
 METERS, METER CANS, VAULTS AND BACKFLOW PREVENTION ASSEMBLIES TO BE INSTALLED PER TOWN OF ADDISON GENERAL REQUIREMENTS.

CAUTION !! EX. UTILITIES MUST BE FIELD VERIFIED PRIOR TO CONSTRUCTION



**BENCHMARKS:**

BM#5  
 12' CUT AT NORTHWEST CORNER OF NORTH HDWL. OF 7'X7' BOX CULVERT UNDER RAILROAD, ±180' WEST OF DALLAS PARKWAY SOUTHBOUND, ELEV. 610.49

THE SEAL APPEARING ON THIS DOCUMENT WAS AUTHORIZED BY DAVID E. MEYERS, P.E. 81512 ON 10/2/97

DATE	DESCRIPTION	REF. NO.
10/27/97	RECORD DRAWING	▲
8/4/97	REVISED ELEVATION ON BENCHMARK #5	▲
7/24/97	REVISED HYDRANT LOCATION	▲
6/26/97	REVISED HYDRANT LOCATION	▲
6/16/97	ISSUED FOR CONSTRUCTION	N/A
6/10/97	ADDENDUM NO. 1; ADD 20 L.F. 8" W	▲
6/2/97	ISSUED FOR BID	N/A

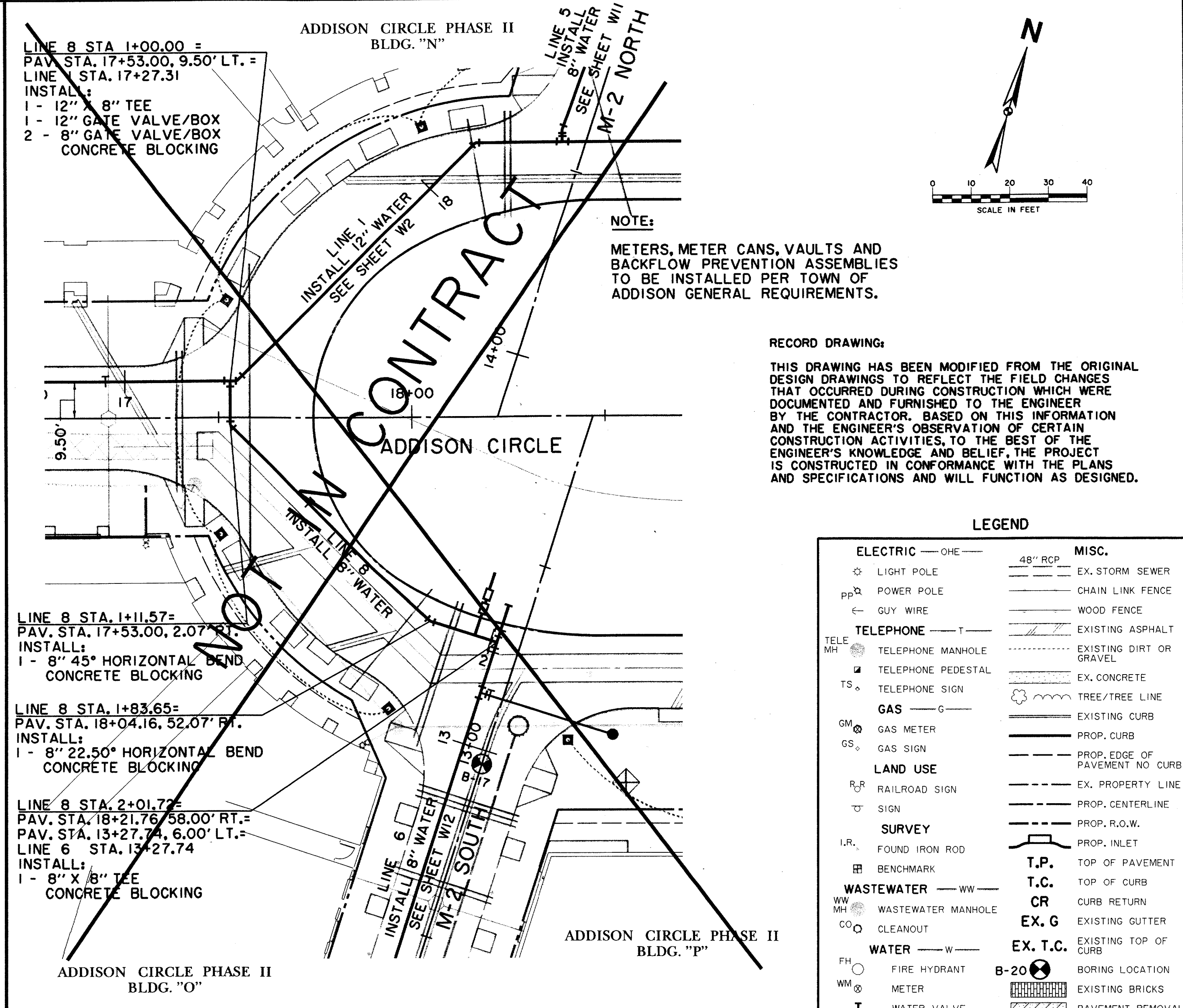
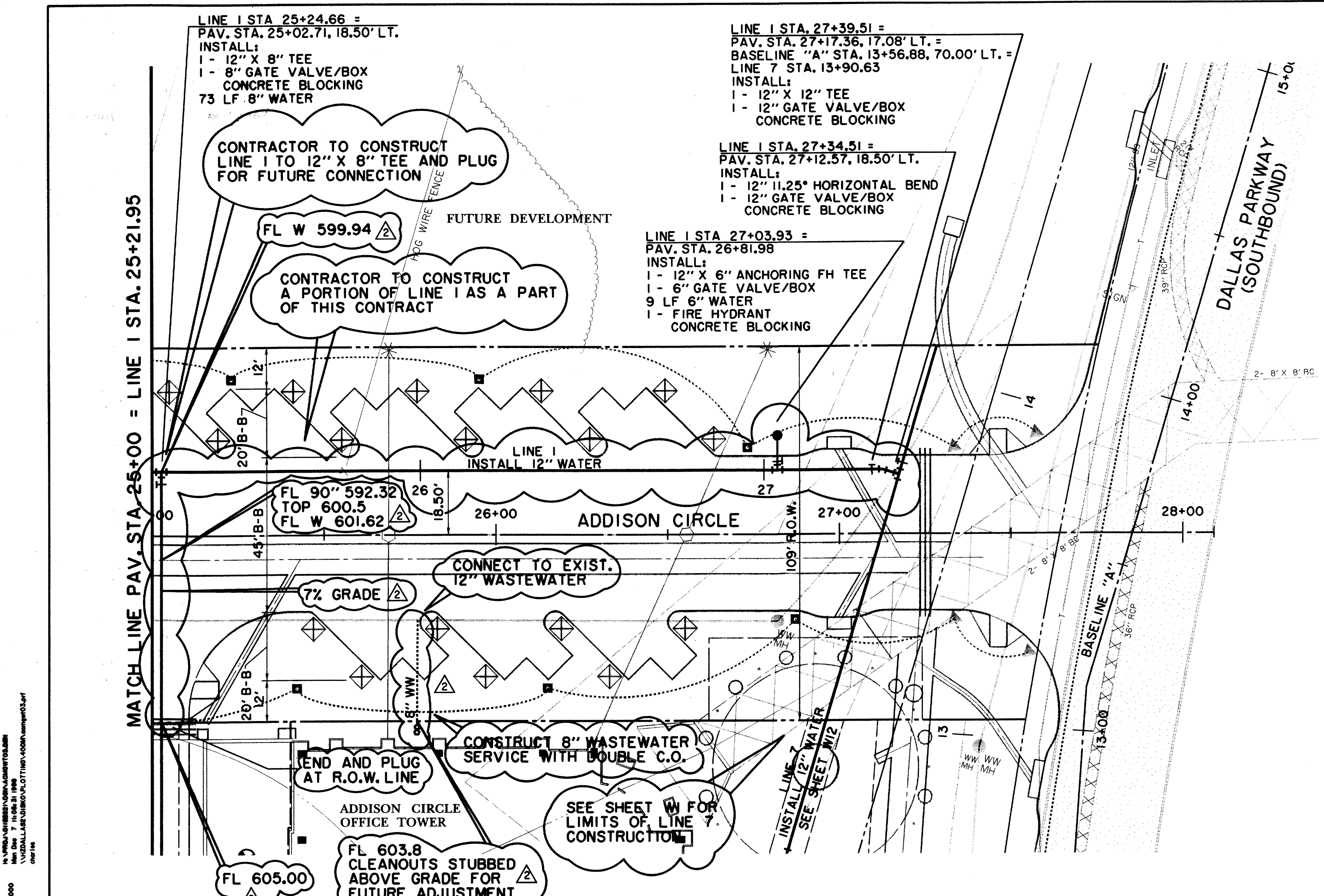
**WATER PLAN & PROFILE**  
 LINE 7 - DALLAS PARKWAY (SOUTHBOUND)  
 ADDISON CIRCLE  
 PHASE II MASS GRADING  
 TOWN OF ADDISON, TEXAS

Hult-Zollars, Inc./Engineering/Architecture  
 Dallas, Fort Worth, Houston, El Paso, Phoenix, Tustin, Ontario

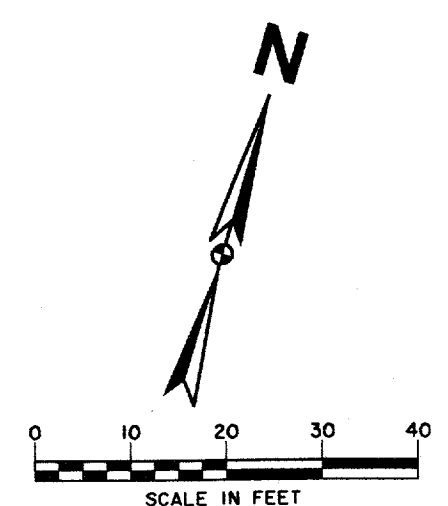
DESIGN	DRAWN	APPR.	SCALE	DATE	PROJECT NO.	NO.
HZI	HZI	DEM	H: 1"=20' V: 1"=6'	JUN. 97	01-1822-34	WI

H:\PROJ\011822\1\DWG\ACMGW04.DGN  
 DATE PLOTTED: 10/27/97 10:00 AM  
 PLOTTER: HPGL-RT  
 PLOTTER DRIVER: HPGL-RT

THE SEAL APPEARING ON THIS DOCUMENT WAS AUTHORIZED BY DAVID E. MEYERS, P.E. 81512 ON 10/2/97



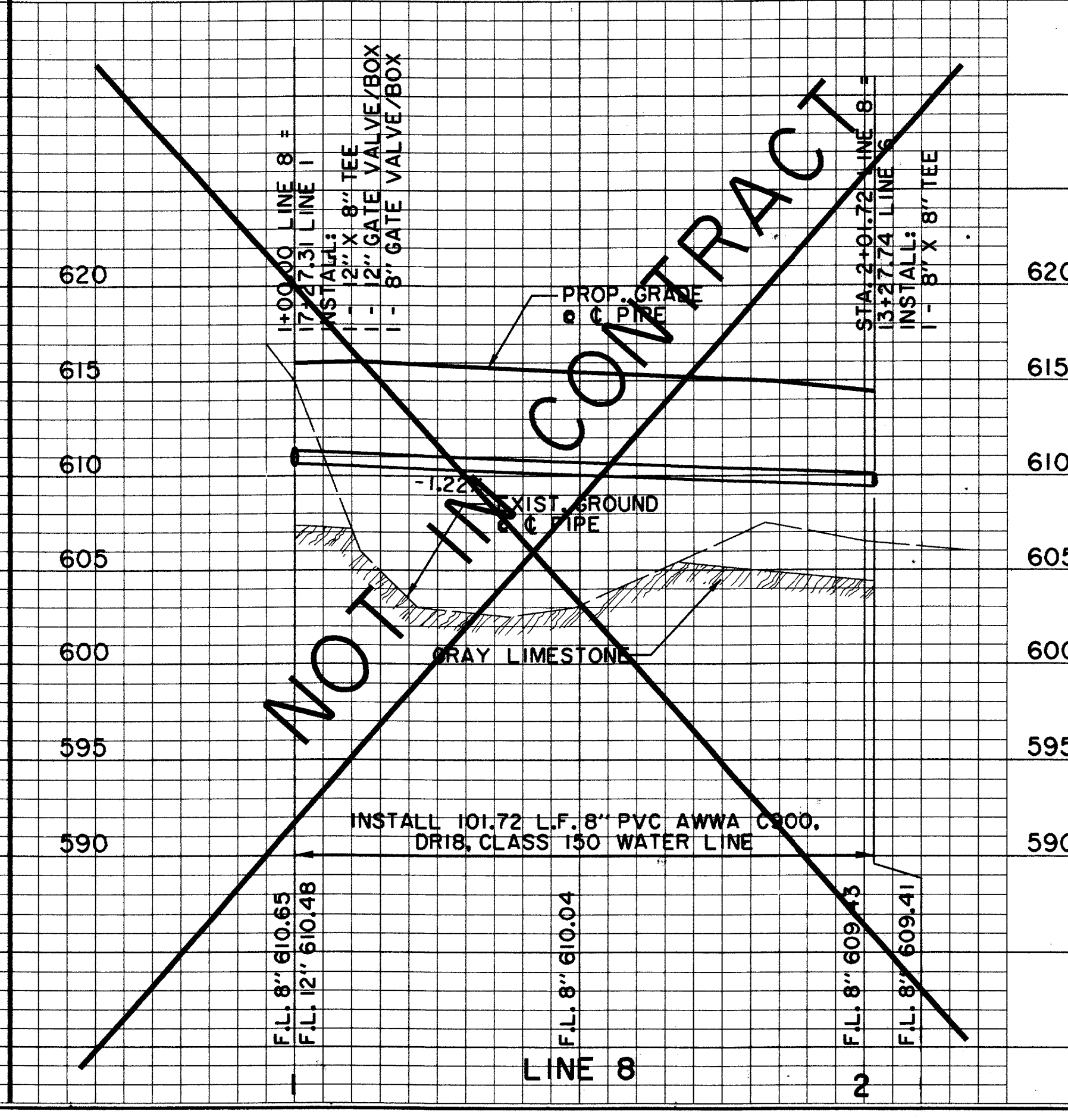
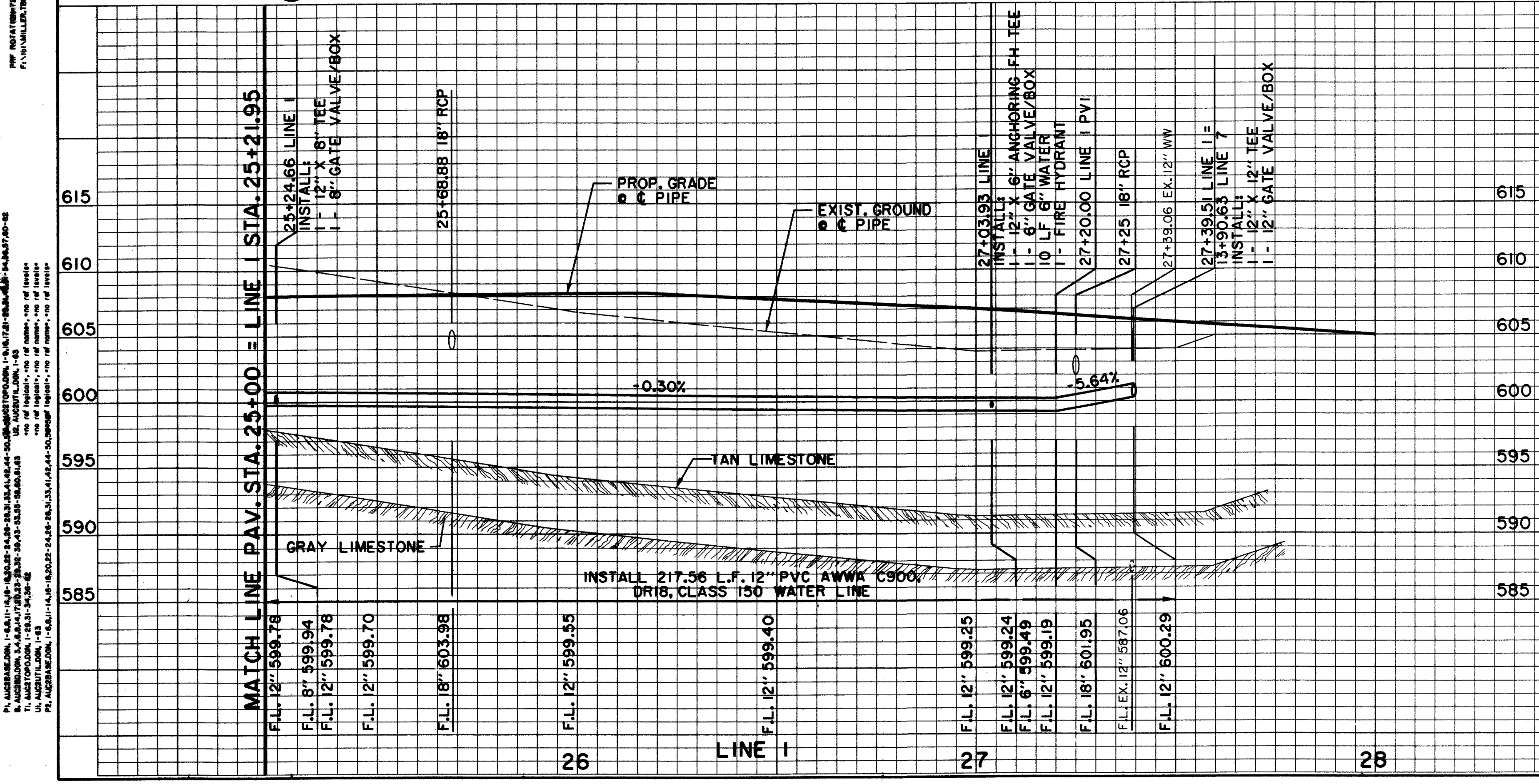
NOTE:  
METERS, METER CANS, VAULTS AND BACKFLOW PREVENTION ASSEMBLIES TO BE INSTALLED PER TOWN OF ADDISON GENERAL REQUIREMENTS.



RECORD DRAWING:  
THIS DRAWING HAS BEEN MODIFIED FROM THE ORIGINAL DESIGN DRAWINGS TO REFLECT THE FIELD CHANGES THAT OCCURRED DURING CONSTRUCTION WHICH WERE DOCUMENTED AND FURNISHED TO THE ENGINEER BY THE CONTRACTOR. BASED ON THIS INFORMATION AND THE ENGINEER'S OBSERVATION OF CERTAIN CONSTRUCTION ACTIVITIES, TO THE BEST OF THE ENGINEER'S KNOWLEDGE AND BELIEF, THE PROJECT IS CONSTRUCTED IN CONFORMANCE WITH THE PLANS AND SPECIFICATIONS AND WILL FUNCTION AS DESIGNED.

**LEGEND**

ELECTRIC	MISC.
—O— OH	48" RCP
⊕ LIGHT POLE	EX. STORM SEWER
PP/⊕ POWER POLE	CHAIN LINK FENCE
— GUY WIRE	WOOD FENCE
— TELEPHONE — T —	EXISTING ASPHALT
TELEPHONE MANHOLE	EXISTING DIRT OR GRAVEL
TELEPHONE PEDESTAL	EX. CONCRETE
TS TELEPHONE SIGN	EXISTING CURB
GAS — G —	TREE/TREE LINE
GAS METER	EXISTING Curb
GS GAS SIGN	PROP. CURB
LAND USE	PROP. EDGE OF PAVEMENT NO CURB
R/S RAILROAD SIGN	EX. PROPERTY LINE
SIGN	PROP. CENTERLINE
SURVEY	PROP. R.O.W.
I.R. FOUND IRON ROD	PROP. INLET
BENCHMARK	T.P. TOP OF PAVEMENT
WASTEWATER — WW —	T.C. TOP OF CURB
WASTEWATER MANHOLE	CR CURB RETURN
CLEANOUT	EX. G EXISTING GUTTER
WATER — W —	EX. T.C. EXISTING TOP OF CURB
FIRE HYDRANT	B-20 BORING LOCATION
METER	EXISTING BRICKS
WATER VALVE	PAVEMENT REMOVAL



**BENCHMARKS:**  
BM#5 CUT AT NORTHWEST CORNER OF NORTH HDWL. OF 7'X7' BOX CULVERT UNDER RAILROAD, 1180' WEST OF DALLAS PARKWAY SOUTHBOUND, ELEV. 610.49

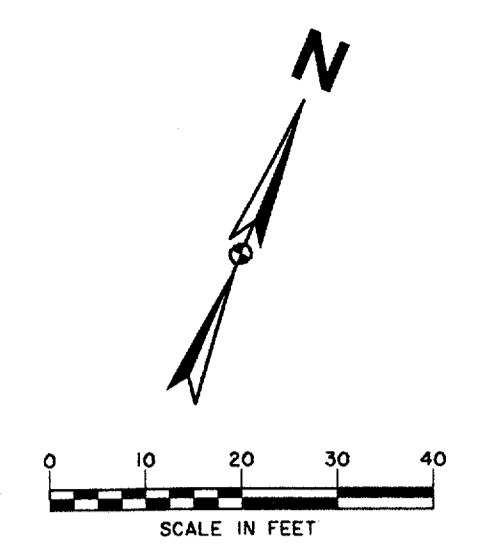
THE SEAL APPEARING ON THIS DOCUMENT WAS AUTHORIZED BY DAVID E. MEYERS, P.E. 81512 ON 10/22/97

DATE	DESCRIPTION	REF NO.
10/27/97	RECORD DRAWING	W2
8/4/97	REVISED ELEVATION ON BENCHMARK #5	W2
6/16/97	ISSUED FOR CONSTRUCTION	N/A
6/2/97	ISSUED FOR BID	N/A

**WATER PLAN & PROFILE**  
LINE 1 & 8 - ADDISON CIRCLE  
**ADDISON CIRCLE**  
PHASE II MASS GRADING  
TOWN OF ADDISON, TEXAS

Hiitt-Zollars, Inc./Engineering/Architecture  
Dallas, Fort Worth, Houston, El Paso, Phoenix, Tustin, Ontario

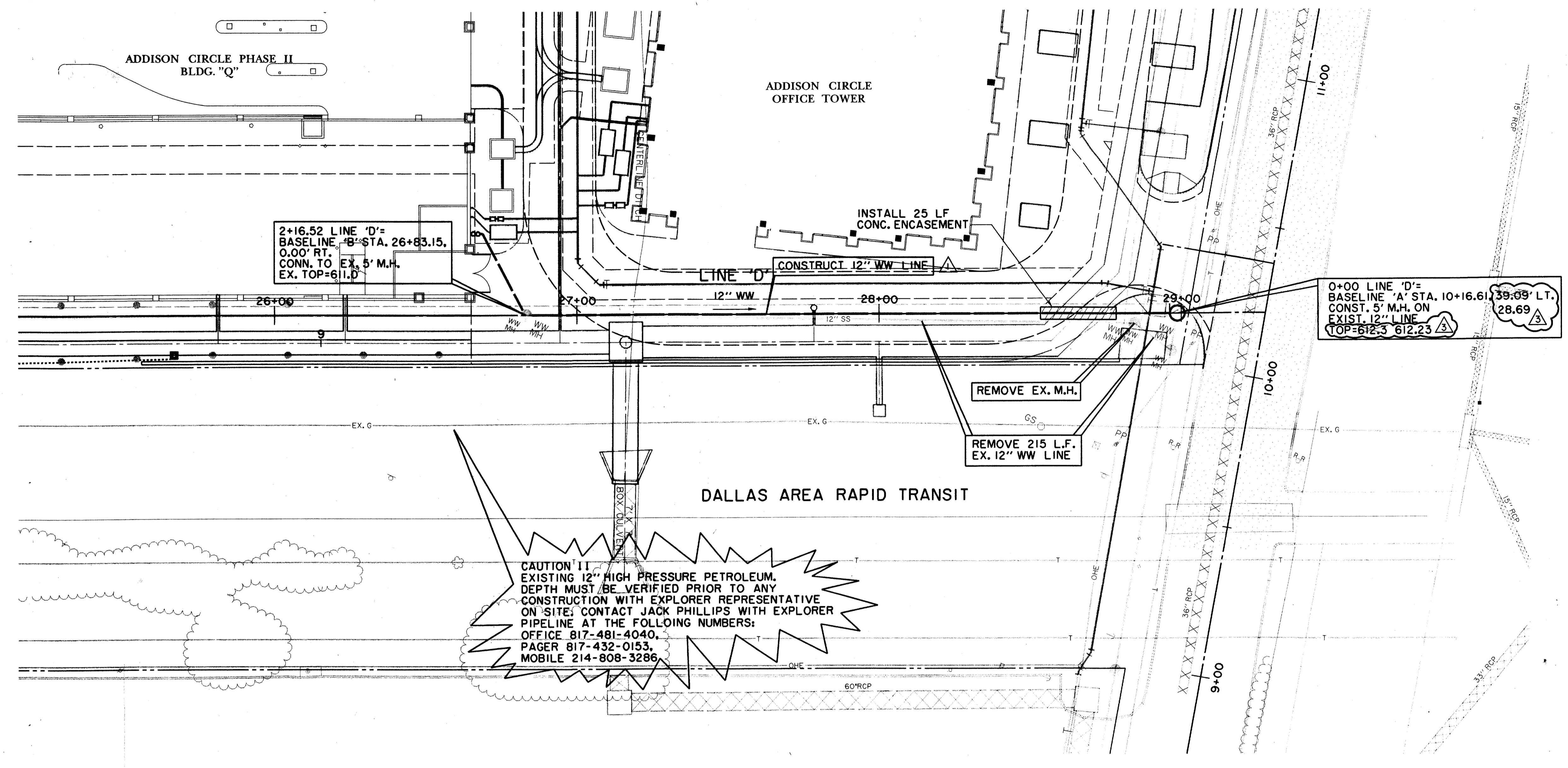
DESIGN	DRAWN	APPR.	SCALE	DATE	PROJECT NO.	NO.
HZ1	HZ1	DEM	H: 1"=20' V: 1"=6'	JUN. 97	01-1822-34	W2



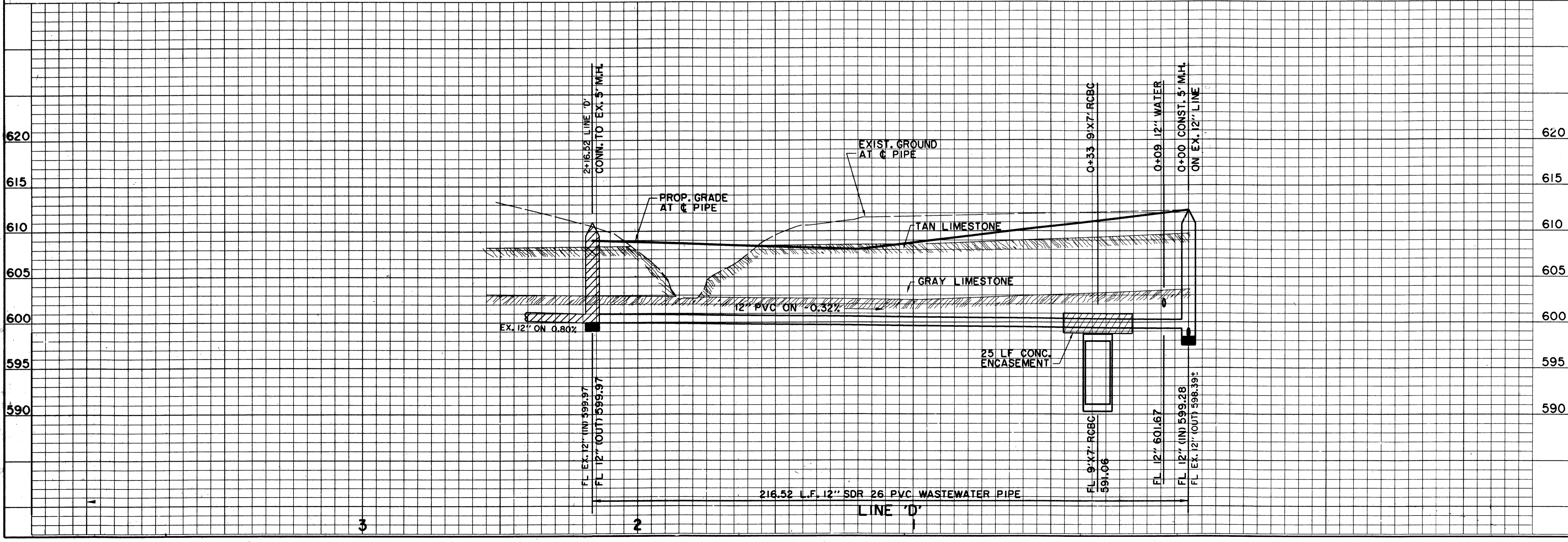
CONTRACTOR TO CONSTRUCT LINE "D".

RECORD DRAWING:  
 THIS DRAWING HAS BEEN MODIFIED FROM THE ORIGINAL DESIGN DRAWINGS TO REFLECT THE FIELD CHANGES THAT OCCURRED DURING CONSTRUCTION WHICH WERE DOCUMENTED AND FURNISHED TO THE ENGINEER BY THE CONTRACTOR. BASED ON THIS INFORMATION AND THE ENGINEER'S OBSERVATION OF CERTAIN CONSTRUCTION ACTIVITIES, TO THE BEST OF THE ENGINEER'S KNOWLEDGE AND BELIEF, THE PROJECT IS CONSTRUCTED IN CONFORMANCE WITH THE PLANS AND SPECIFICATIONS AND WILL FUNCTION AS DESIGNED.

LEGEND	
ELECTRIC — OHE —	MISC. — 48" RCP — EX. STORM SEWER
⊗ LIGHT POLE	— CHAIN LINK FENCE
PP POWER POLE	— WOOD FENCE
— GUY WIRE	— EXISTING ASPHALT
TELEPHONE — T —	— EXISTING DIRT OR GRAVEL
MH TELEPHONE MANHOLE	— EX. CONCRETE
TS TELEPHONE PEDESTAL	— TREE/TREE LINE
TS TELEPHONE SIGN	— EXISTING CURB
GM GAS METER	— PROP. CURB
GS GAS SIGN	— PROP. EDGE OF PAVEMENT NO CURB
LAND USE	— EX. PROPERTY LINE
R.R. RAILROAD SIGN	— PROP. CENTERLINE
□ SIGN	— PROP. R.O.W.
SURVEY	— PROP. INLET
I.R. FOUND IRON ROD	— T.P. TOP OF PAVEMENT
⊕ BENCHMARK	— T.C. TOP OF CURB
W.W. WASTEWATER — WW —	— CR CURB RETURN
MH WASTEWATER MANHOLE	— EX. G. EXISTING GUTTER
CO CLEANOUT	— EX. T.C. EXISTING TOP OF CURB
WATER — W —	— B-20 BORING LOCATION
FH FIRE HYDRANT	— EXISTING BRICKS
WM METER	— PAVEMENT REMOVAL
T WATER VALVE	



CAUTION!!  
 EXISTING 12" HIGH PRESSURE PETROLEUM. DEPTH MUST BE VERIFIED PRIOR TO ANY CONSTRUCTION WITH EXPLORER REPRESENTATIVE ON SITE. CONTACT JACK PHILLIPS WITH EXPLORER PIPELINE AT THE FOLLOING NUMBERS:  
 OFFICE 817-481-4040.  
 PAGER 817-432-0153.  
 MOBILE 214-808-3286.



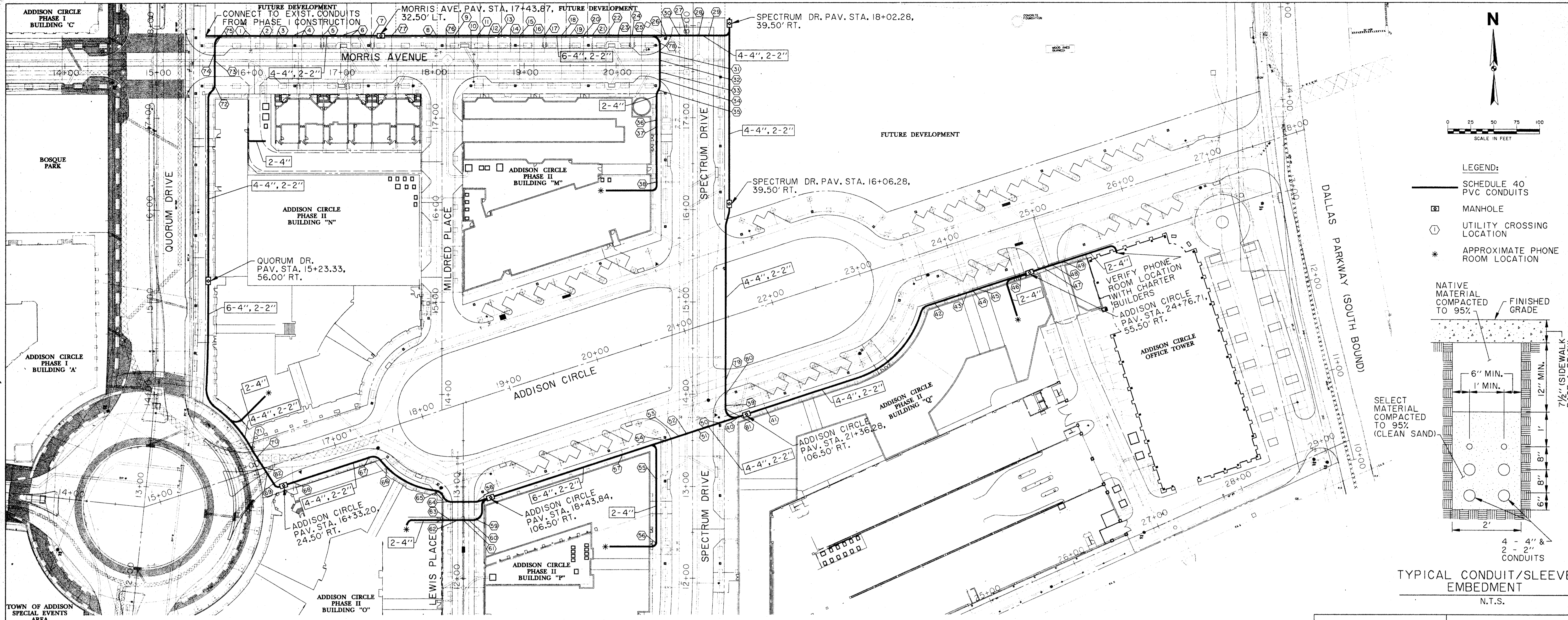
BENCHMARKS:	
BM*5	"□" CUT AT NORTHWEST CORNER OF NORTH HDWL. OF 7'x7' BOX CULVERT UNDER RAILROAD, 180' WEST OF DALLAS PARKWAY SOUTHBOUND, ELEV. 610.49
BM*6	"□" CUT AT CENTER FRONT OF 18" REC. INLET, SECOND INLET NORTH OF RAILROAD TRACKS ON THE WEST SIDE OF DALLAS PARKWAY SOUTHBOUND, ELEV. 605.67

DATE	DESCRIPTION	REF. NO.
10/27/97	RECORD DRAWING	3
8/4/97	REVISED ELEVATION ON BENCHMARK *5	2
6/16/97	ISSUED FOR CONSTRUCTION	N/A
6/10/97	ADDENDUM NO. 1	1
6/2/97	ISSUED FOR BID	N/A

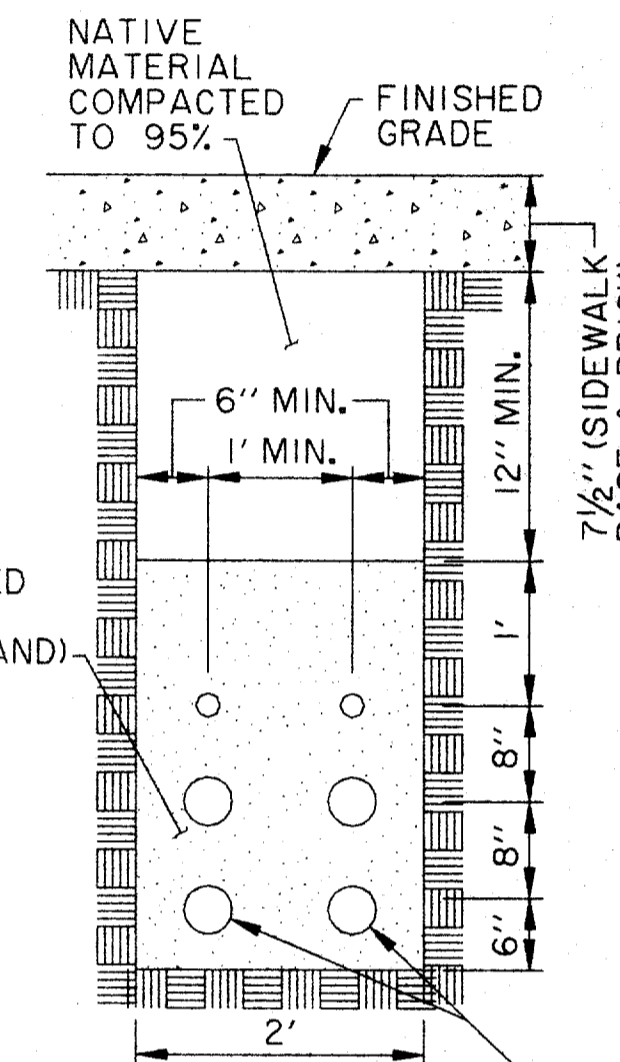
  

WASTEWATER PLAN & PROFILE		
LINE 'D'		
ADDISON CIRCLE		
PHASE II MASS GRADING		
TOWN OF ADDISON, TEXAS		
Huiitt-Zollars, Inc./Engineering/Architecture Dallas, Fort Worth, Houston, El Paso, Phoenix, Tucson, Ontario		
DESIGN	DRAWN	SCALE
HZ1	HZ1	DEM
DATE	PROJECT NO.	NO.
OCT. 97	01-1822-34	W3



**LEGEND:**

- SCHEDULE 40 PVC CONDUITS
- MANHOLE
- UTILITY CROSSING LOCATION
- \* APPROXIMATE PHONE ROOM LOCATION



TYPICAL CONDUIT/SLEEVE EMBEDMENT  
N.T.S.

LOCATION	UTILITY	APPROX. FINISHED GRADE	APPROX. UTILITY F.L.
1	6" WATER	619.8	613.7
2	8" WASTEWATER	619.4	609.7
3	1" WATER SERVICE	618.8	618.0
4	2-4" WASTEWATER LATERALS	618.1, 617.8	609.3, 609.1
5	1" BULLHEAD WATER SERVICE	617.3	616.5
6	2-4" WASTEWATER LATERALS	616.7, 616.4	608.5, 607.9
7	1" BULLHEAD WATER SERVICE	616.1	615.4
8	8" WATER	609.9	605.1
9	4" WASTEWATER LATERAL	614.5	605.1
10	1" WATER SERVICE	614.3	613.5
11	4" WASTEWATER LATERAL	614.2	604.5
12	1" WATER SERVICE	614.1	613.3
13	4" WASTEWATER LATERAL	614.0	604.0
14	1" WATER SERVICE	613.7	612.9
15	4" WASTEWATER LATERAL	613.6	603.4
16	4" WASTEWATER LATERAL	613.4	603.0
17	1" BULLHEAD WATER SERVICE	613.3	612.5
18	4" WASTEWATER LATERAL	613.0	602.3
19	1" WATER SERVICE	612.9	612.1
20	4" WASTEWATER LATERAL	612.7	601.7
21	1" WATER SERVICE	612.5	611.7
22	4" WASTEWATER LATERAL	612.4	601.1
23	4" WASTEWATER LATERAL	612.2	600.8
24	1" BULLHEAD WATER SERVICE	612.0	611.2
25	4" WASTEWATER LATERAL	611.8	600.2
26	21" STORM WATER LATERAL	611.5	602.6
27	42" STOM WATER MAIN	611.5	601.4
28	8E6 ELECTRIC DUCTBANK	611.6	593.1
29	8" WASTEWATER MAIN	611.3	597.9
30	12" WATER MAIN	611.4	606.5
31	8" WATER MAIN	611.1	606.2
32	6E6 ELECTRIC DUCTBANK	611.0	594.0
33	27" STOM WATER MAIN	611.1	602.7
34	8" WASTEWATER MAIN	610.9	598.7
35	4" TREE SUBDRAIN	610.9	604.8
36	6" FIRE SERVICE	611.0	607.0
37	4" WATER SERVICE	611.0	607.0
38	2" IRRIGATION SERVICE	610.7	609.9
39	4E6 ELECTRIC DUCTBANK	611.2	590.3
40	10" STORM WATER	611.8	601.0
41	6" WASTEWATER LATERAL	611.8	603.8
42	2" IRRIGATION SERVICE	610.3	609.5
43	4" WATER SERVICE	610.2	606.2
44	6" FIRE SERVICE	610.2	606.2

LOCATION	UTILITY	APPROX. FINISHED GRADE	APPROX. UTILITY F.L.
45	1" WATER SERVICE	610.2	609.4
46	6" WASTEWATER SERVICE	609.7	601.7
47	4E6 ELECTRIC DUCTBANK	608.8	595.3
48	8" WATER MAIN	608.8	605.0
49	18" STORMWATER LATERAL	610.2	595.4
50	4" TREE SUBDRAIN	611.4	604.8
51	8E6 ELECTRIC DUCTBANK	611.7	590.4
52	21" STORM WATER MAIN	611.4	601.5
53	12" WATER MAIN	611.5	607.0
54	4" TREE SUBDRAIN	612.0	605.6
55	15" STORM WATER MAIN	612.3	603.2
56	6" FIRE SERVICE	612.4	608.4
57	6" WASTEWATER LATERAL	613.3	605.3
58	4" TREE DRAIN	614.8	610.6
59	4" TREE DRAIN	615.2	610.8
60	8" WASTEWATER MAIN	614.8	600.7
61	18" STORM WATER MAIN	614.6	604.2
62	8" WATER MAIN	615.1	610.14
63	4" TREE DRAIN	615.1	610.0
64	4" TREE DRAIN	615.0	609.7
65	8" WASTEWATER LATERAL	615.2	600.3
66	15" STORM WATER MAIN	616.6	608.3
67	4" WASTEWATER LATERAL	616.9	608.9
68	6" WASTEWATER LATERAL	618.5	610.5
69	36" STORM WATER MAIN	618.3	605.4
70	66" STORM WATER MAIN	618.6	605.2
71	12" WATER MAIN	619.0	611.3
72	4" TREE DRAIN	621.4	615.6
73	6E6 & 4E6 ELECTRIC DUCTBANK	621.2, 621.2	607.3, 610.7
74	8" WATER MAIN	621.8	614.3
75	4" TREE DRAIN	621.9	615.5
76	1" WATER SERVICE	614.5	613.7
77	4" WASTEWATER LATERAL	615.4	606.7
78	4" TREE DRAIN	611.5	605.3
79	90" STORM WATER MAIN	611.0	596.6
80	12" WASTEWATER MAIN	611.4	594.0
81	4" TREE DRAIN	611.5	604.5
82	12" WASTEWATER	618.4	603.3

- NOTES:**
- SEE MEP SITE ELECTRICAL PLAN AND ARCHITECTURAL PLANS TO VERIFY EXACT LOCATION OF PHONE EQUIPMENT ROOMS.
  - SEE SPECIFICATIONS FOR MANHOLE DETAILS AND SWEEP REQUIREMENTS.
  - CONTRACTOR SHALL COORDINATE ALL WORK WITH THE ADDISON CIRCLE PHASE II PUBLIC INFRASTRUCTURE AND ADDISON CIRCLE APARTMENT CONSTRUCTION. NOTED UTILITY CROSSINGS MUST BE CLOSELY COORDINATED TO PREVENT UNNECESSARY RE-WORK. THE TOWN OF ADDISON WILL DETERMINE WHAT, IF ANY, ADJUSTMENTS CAN BE MADE TO SERVICE LINES FROM PUBLIC MAINS.
  - SUCCESSFUL BIDDER SHALL PROVIDE PROFILE DRAWINGS OF CONDUIT ROOTINGS SHOWING ALL UTILITY CROSSINGS. THESE PROFILE DRAWINGS SHALL BE APPROVED BY THE ENGINEER AND THE TOWN OF ADDISON PRIOR TO CONSTRUCTION.
  - MANY OF THE UTILITIES HAVE BEEN INSTALLED WITH THE PUBLIC INFRASTRUCTURE CONSTRUCTION. SUCCESSFUL BIDDER SHALL OBTAIN ACTUAL UTILITY CROSSING F.L.'s FROM POST APARTMENT HOMES L.P. PRIOR TO CONSTRUCTION.

**BENCHMARKS:**

BM#1  
"D" CUT AT CENTER BACK OF CURB OF INLET, 190 FEET SOUTH FROM THE CENTERLINE INTERSECTION OF ADDISON CIRCLE, WEST SIDE OF QUORUM DRIVE.  
ELEV. 621.89

BM#5  
"D" CUT AT NORTHWEST CORNER OF NORTH HDWL. OF 7'X7' BOX CULVERT UNDER RAILROAD, 180' WEST OF DALLAS PARKWAY SOUTHBOUND.  
ELEV. 610.49

THE SEAL APPEARING ON THIS DOCUMENT WAS AUTHORIZED BY DAVID E. MEYERS, P.E. 81512 ON 1/20/98

DATE	DESCRIPTION	REF NO.
1/20/98	ISSUED FOR BID	N/A

**TELEPHONE CONDUIT PLAN**

**ADDISON CIRCLE APARTMENTS**

**PHASE II PRIVATE**

**TOWN OF ADDISON, TEXAS**

Hutt-Zollars, Inc./Engineering/Architecture  
Dallas, Fort Worth, Houston, El Paso, Phoenix, Tulsa, Ontario

DESIGN	DRAWN	APPR.	SCALE	DATE	PROJECT NO.	NO.
HZI	HZI	DEM	1"=50'	JAN. 98	03.0263.05	PJ

h:\proj\018221\dgn\AUC2SV02.DGN

P:\ADDISON\AUC2SV02.DGN  
 DATE: 1/20/98  
 TIME: 10:00 AM  
 USER: HZI  
 PLOT: 1/20/98 10:00 AM  
 PLOTTER: HP-GL/2