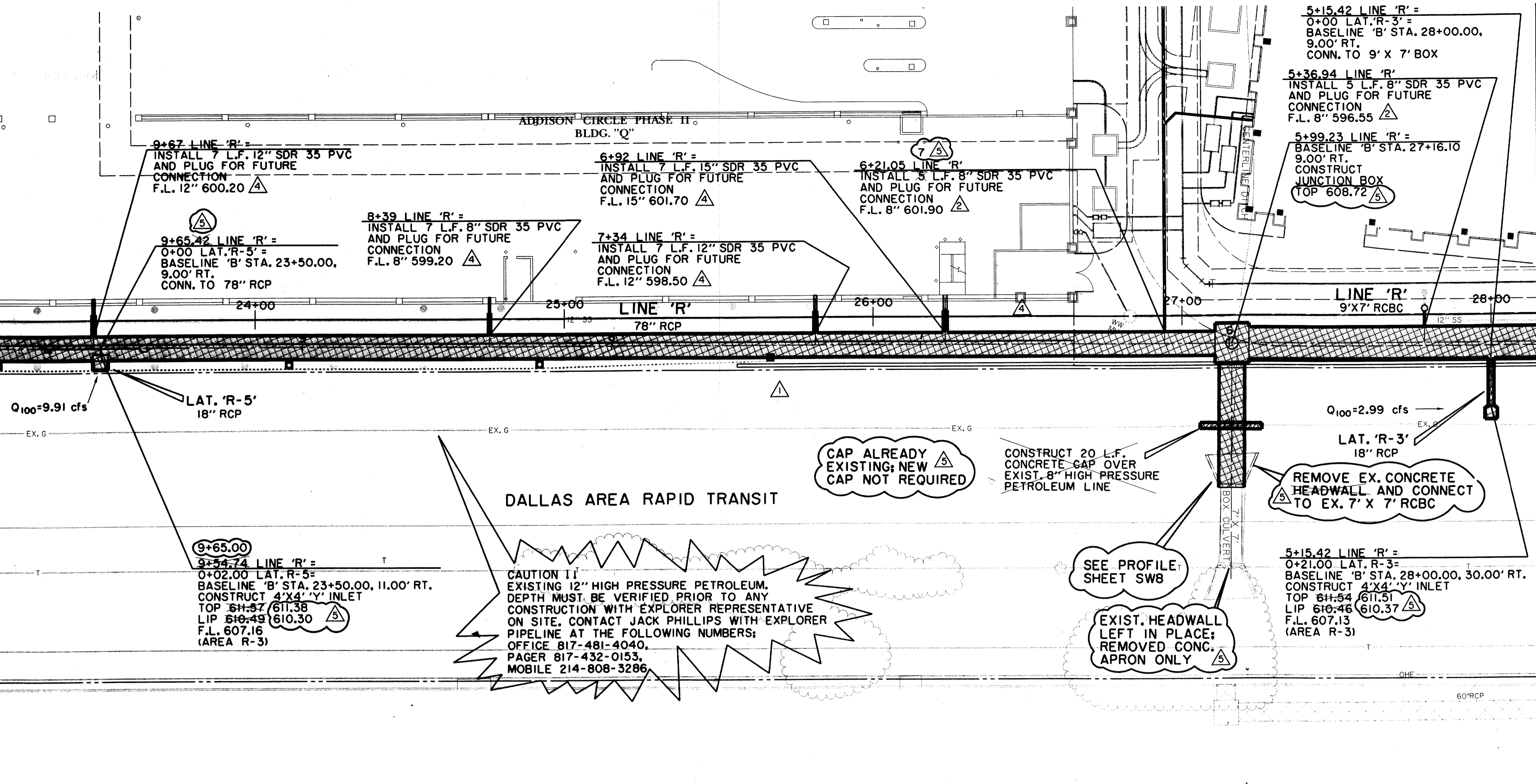


CONTRACTOR TO CONSTRUCT TRUNK LINE 'R', 7' X 7' RCBC CONNECTION TO RAILROAD CULVERT. FIELD CONNECTION OF LATERALS, LATERAL PIPE AS DENOTED, DROP INLETS AND PLUG FOR FUTURE CONNECTION.

MATCH LINE PAV. STA. 23+15.33 = LINE 'R' STA. 10+00

MATCH LINE PAV. STA. 28+15.33 = LINE 'R' STA. 5+00



RECORD DRAWING:

THIS DRAWING HAS BEEN MODIFIED FROM THE ORIGINAL DESIGN DRAWINGS TO REFLECT THE FIELD CHANGES THAT OCCURRED DURING CONSTRUCTION WHICH WERE DOCUMENTED AND FURNISHED TO THE ENGINEER BY THE CONTRACTOR. BASED ON THIS INFORMATION AND THE ENGINEER'S OBSERVATION OF CERTAIN CONSTRUCTION ACTIVITIES TO THE BEST OF THE ENGINEER'S KNOWLEDGE AND BELIEF, THE PROJECT IS CONSTRUCTED IN CONFORMANCE WITH THE PLANS AND SPECIFICATIONS AND WILL FUNCTION AS DESIGNED.

**LEGEND**

ELECTRIC — OHE	48" RCP	MISC.
○ LIGHT POLE	— EX. STORM SEWER	— CHAIN LINK FENCE
PPR POWER POLE	— WOOD FENCE	— EXISTING ASPHALT
— GUY WIRE	— EXISTING DIRT OR GRAVEL	— EXISTING CURB
TELEPHONE — T	— EX. CONCRETE	— TREE/TREE LINE
TELEPHONE MANHOLE	— EXISTING CURB	— PROP. CURB
TELEPHONE PEDESTAL	— EX. PROPERTY LINE	— PROP. EDGE OF PAVEMENT NO CURB
TELEPHONE SIGN	— PROP. CENTERLINE	— EX. PROPERTY LINE
GAS — G	— PROP. R.O.W.	— PROP. INLET
GM GAS METER	— T.P.	— TOP OF PAVEMENT
GS GAS SIGN	— T.C.	— TOP OF CURB
LAND USE	— CR	— CURB RETURN
RR RAILROAD SIGN	— EX. G	— EXISTING GUTTER
SIGN	— EX. T.C.	— EXISTING TOP OF CURB
SURVEY	B-20	— BORING LOCATION
FOUND IRON ROD	— EXISTING BRICKS	— PAVEMENT REMOVAL
BENCHMARK		
WASTEWATER — WW		
WASTEWATER MANHOLE		
CLEANOUT		
WATER — W		
FIRE HYDRANT		
METER		
WATER VALVE		

DALLAS AREA RAPID TRANSIT

CAUTION !! EXISTING 12" HIGH PRESSURE PETROLEUM. DEPTH MUST BE VERIFIED PRIOR TO ANY CONSTRUCTION WITH EXPLORER REPRESENTATIVE ON SITE. CONTACT JACK PHILLIPS WITH EXPLORER PIPELINE AT THE FOLLOWING NUMBERS: OFFICE 817-481-4040, PAGER 817-432-0153, MOBILE 214-808-3286

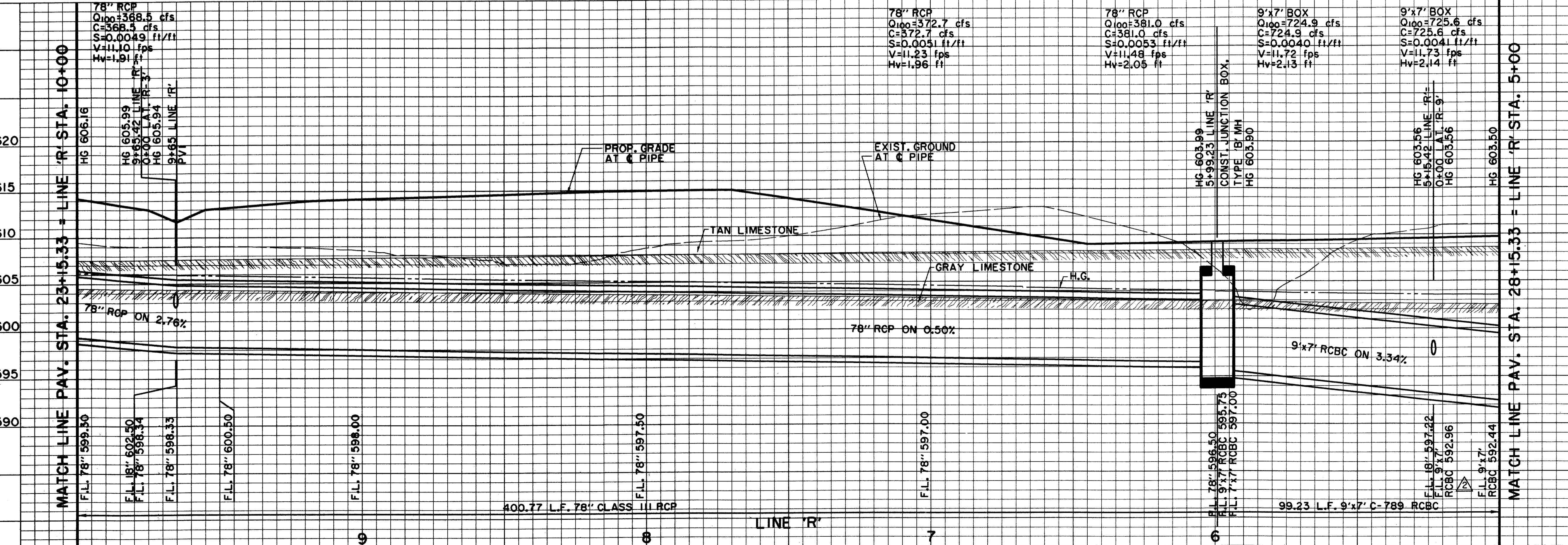
CAP ALREADY EXISTING; NEW CAP NOT REQUIRED

CONSTRUCT 20 L.F. CONCRETE GAP OVER EXIST. 8" HIGH PRESSURE PETROLEUM LINE

REMOVE EX. CONCRETE HEADWALL AND CONNECT TO EX. 7' X 7' RCBC

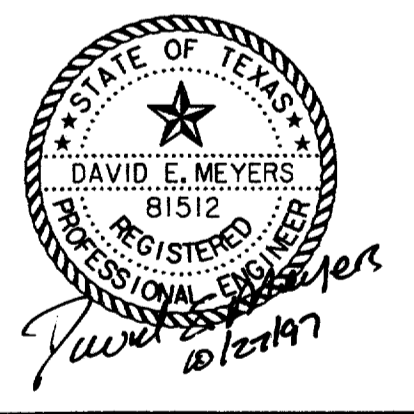
SEE PROFILE SHEET SW8

EXIST. HEADWALL LEFT IN PLACE; REMOVED CONC. APRON ONLY



**BENCHMARKS:**  
 BM#5 'I' CUT AT NORTHWEST CORNER OF NORTH HDWL. OF 7'X7' BOX CULVERT UNDER RAILROAD, 180' WEST OF DALLAS PARKWAY SOUTHBOUND. ELEV. 610.49  
 BM#6 'I' CUT AT CENTER FRONT OF 18" REC. INLET, SECOND INLET NORTH OF RAILROAD TRACKS ON THE WEST SIDE OF DALLAS PARKWAY SOUTHBOUND. ELEV. 605.67

THE SEAL APPEARING ON THIS DOCUMENT WAS AUTHORIZED BY DAVID E. MEYERS, P.E. 81512 ON 10/27/97



DATE	DESCRIPTION	REF. NO.
10/27/97	RECORD DRAWING	5
8/26/97	ADDED PVC STUB-OUT; REMOVED LAT. 'R-4'	4
8/4/97	REVISED ELEVATION ON BENCHMARK #5	3
7/24/97	ADDED PVC STUB-OUT; REVISED F.L. 9'X7'	2
6/16/97	ISSUED FOR CONSTRUCTION	N/A
6/10/97	ADDENDUM NO. 1; REVISED LINE 'R' ALIGNMENT	1
6/2/97	ISSUED FOR BID	N/A

**STORM WATER PLAN & PROFILE**  
 LINE 'R' STA. 5+00 TO STA. 10+00  
**ADDISON CIRCLE**  
**PHASE II MASS GRADING**  
**TOWN OF ADDISON, TEXAS**  
 Hui1-Zollars, Inc./Engineering/Architecture  
 Dallas, Fort Worth, Houston, El Paso, Phoenix, Tustin, Ontario

DESIGN	DRAWN	APPR.	SCALE	DATE	PROJECT NO.	NO.
HZI	HZI	DEM	H:1"=20' V:1"=6'	JUN. 97	01-1822-34	SW5

HUI1-ZOLLARS, INC. ENGINEERING/ARCHITECTURE  
 1100 WEST WILSON AVENUE, SUITE 100  
 FORT WORTH, TEXAS 76104-4000  
 TEL: 817-335-1100 FAX: 817-335-1101  
 WWW.HUI1-ZOLLARS.COM

HUI1-ZOLLARS, INC. ENGINEERING/ARCHITECTURE  
 1100 WEST WILSON AVENUE, SUITE 100  
 FORT WORTH, TEXAS 76104-4000  
 TEL: 817-335-1100 FAX: 817-335-1101  
 WWW.HUI1-ZOLLARS.COM