

LINE 7 STA. 13+90.63 =
 BASELINE "A" STA. 13+56.88, 70.00' LT. =
 PAV. STA. 27+17.36, 17.08' LT. =
 LINE 1 STA 27+39.51
 INSTALL:
 1 - 12" X 12" TEE
 1 - 12" GATE VALVE/BOX
 CONCRETE BLOCKING

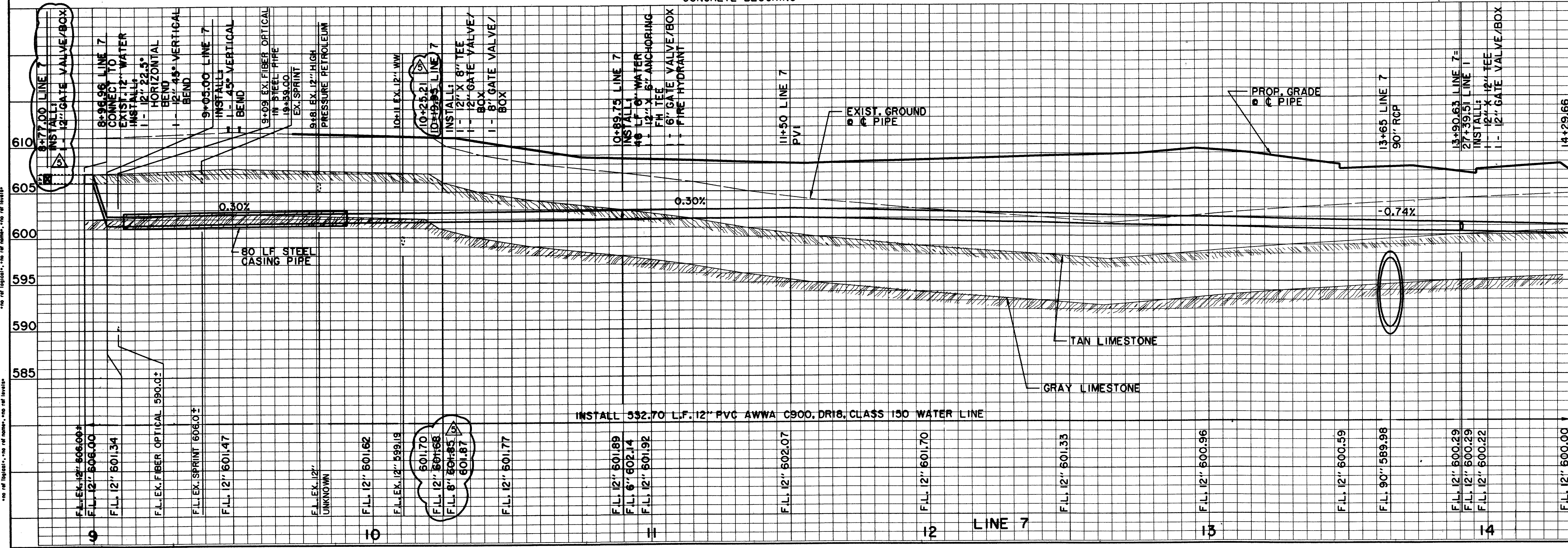
LINE 7 STA. 14+29.66 =
 BASELINE "A" STA. 13+95.91, 70.00' LT.
 INSTALL:
 1 - 12" PLUG
 END LINE 7

**CONTRACTOR TO CONSTRUCT
 LINE 7 AND A PORTION OF LINE
 1 AS PART OF THIS CONTRACT**

RECORD DRAWING:
 THIS DRAWING HAS BEEN MODIFIED FROM THE ORIGINAL
 DESIGN DRAWINGS TO REFLECT THE FIELD CHANGES
 THAT OCCURRED DURING CONSTRUCTION WHICH WERE
 DOCUMENTED AND FURNISHED TO THE ENGINEER
 BY THE CONTRACTOR. BASED ON THIS INFORMATION
 AND THE ENGINEER'S OBSERVATION OF CERTAIN
 CONSTRUCTION ACTIVITIES, TO THE BEST OF THE
 ENGINEER'S KNOWLEDGE AND BELIEF, THE PROJECT
 IS CONSTRUCTED IN CONFORMANCE WITH THE PLANS
 AND SPECIFICATIONS AND WILL FUNCTION AS DESIGNED.

LEGEND

— OHE —	48" RCP	MISC.
⊙	EX. STORM SEWER	
pp	CHAIN LINK FENCE	
—	WOOD FENCE	
—	EXISTING ASPHALT	
—	EXISTING DIRT OR GRAVEL	
—	EX. CONCRETE	
—	EXISTING CURB	
—	PROP. CURB	
—	PROP. EDGE OF PAVEMENT NO CURB	
—	EX. PROPERTY LINE	
—	PROP. CENTERLINE	
—	PROP. P.O.W.	
—	PROP. INLET	
—	T.P.	TOP OF PAVEMENT
—	T.C.	TOP OF CURB
—	CR	CURB RETURN
—	EX. G	EXISTING GUTTER
—	EX. T.C.	EXISTING TOP OF CURB
⊙	B-20	BORING LOCATION
⊙		EXISTING BRICKS
⊙		PAVEMENT REMOVAL



BENCHMARKS:
 BM#5
 12' CUT AT NORTHWEST CORNER
 OF NORTH HDWL. OF 7'X7' BOX
 CULVERT UNDER RAILROAD,
 ±180' WEST OF DALLAS
 PARKWAY SOUTHBOUND,
 ELEV. 610.49

THE SEAL APPEARING ON THIS
 DOCUMENT WAS AUTHORIZED BY
 DAVID E. MEYERS, P.E. 81512
 ON 10/2/97

DATE	DESCRIPTION	REF. NO.
10/27/97	RECORD DRAWING	△
8/4/97	REVISED ELEVATION ON BENCHMARK #5	△
7/24/97	REVISED HYDRANT LOCATION	△
6/26/97	REVISED HYDRANT LOCATION	△
6/16/97	ISSUED FOR CONSTRUCTION	N/A
6/10/97	ADDENDUM NO. 1; ADD 20 L.F. 8" W	△
6/2/97	ISSUED FOR BID	N/A

**WATER PLAN & PROFILE
 LINE 7 - DALLAS PARKWAY (SOUTHBOUND)
 ADDISON CIRCLE
 PHASE II MASS GRADING
 TOWN OF ADDISON, TEXAS**

Hullitt-Zollars, Inc./Engineering/Architecture
 Dallas, Fort Worth, Houston, El Paso, Phoenix, Tustin, Ontario

DESIGN	DRAWN	APPR.	SCALE	DATE	PROJECT NO.	NO.
HZI	HZI	DEM	H: 1"=20' V: 1"=6'	JUN. 97	01-1822-34	WI

HULLITT-ZOLLARS, INC. ENGINEERING/ARCHITECTURE
 1100 WEST 11TH STREET, SUITE 1000
 DALLAS, TEXAS 75204-1100
 TEL: 214-751-1100 FAX: 214-751-1101
 WWW.HULLITZOLLARS.COM

THE SEAL APPEARING ON THIS DOCUMENT WAS AUTHORIZED BY DAVID E. MEYERS, P.E. 81512 ON 10/2/97