

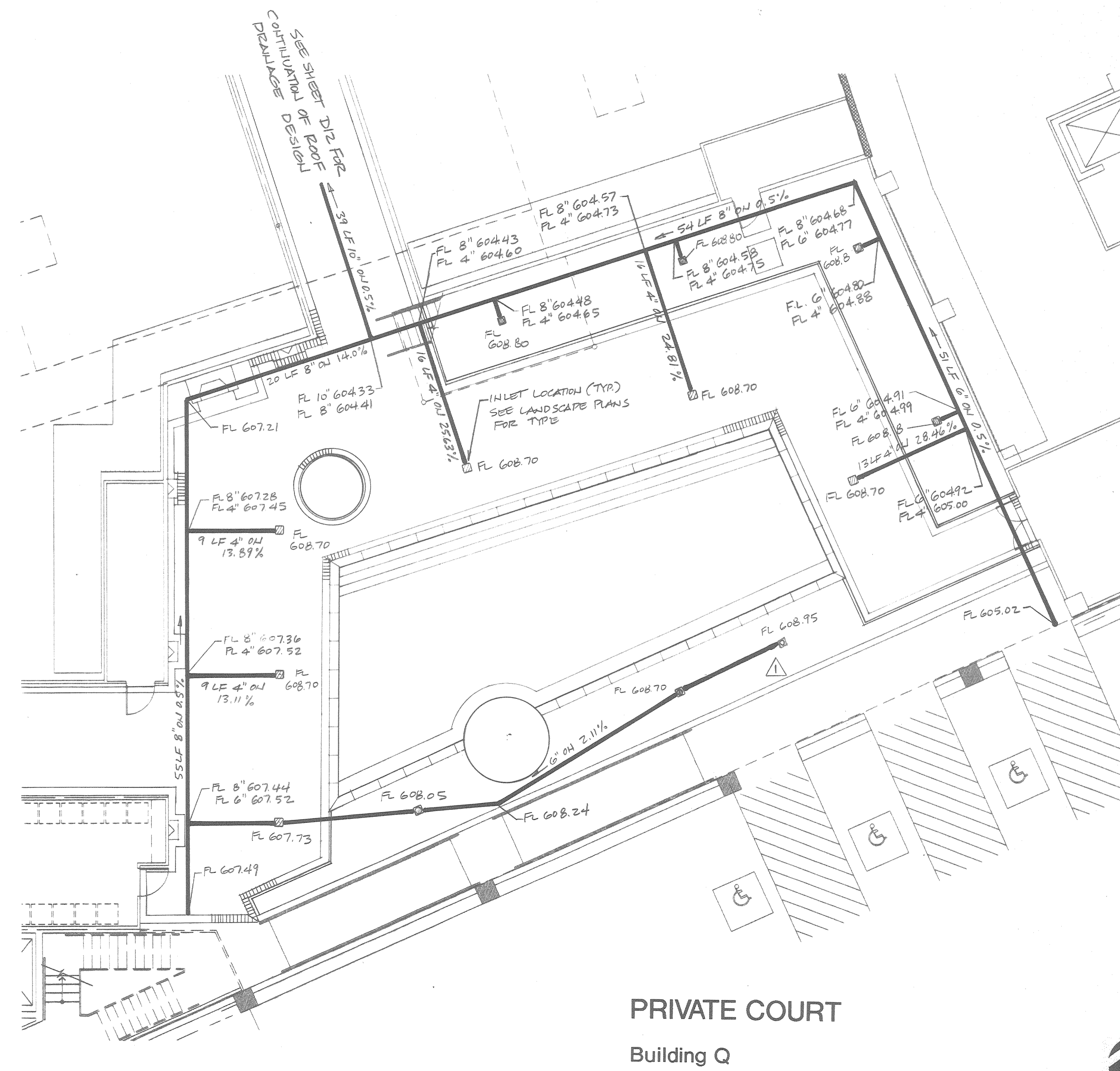
**NOTES:**

1. SEE LANDSCAPE PLANS FOR FINAL COURTYARD GRADES AND DRAIN TYPES.
2. SEE OVERALL BUILDING DRAINAGE PLAN FOR GENERAL NOTES AND CONNECTION DETAIL.

**BENCHMARKS:**

BM#1  
"1" CUT AT CENTER BACK OF CURB OF INLET, 190 FEET SOUTH FROM THE CENTERLINE INTERSECTION OF ADDISON CIRCLE, WEST SIDE OF QUORUM DRIVE.  
ELEV. 621.89

BM#5  
"1" CUT AT NORTHWEST CORNER OF NORTH HDWL. OF 7'X7' BOX CULVERT UNDER RAILROAD, 1180' WEST OF DALLAS PARKWAY SOUTHBOUND.  
ELEV. 610.49



**PRIVATE COURT  
Building Q**

**ADDISON CIRCLE  
PHASE II**

Landscape Architect  
**HUITT-ZOLIARS, INC.**  
3131 McKinney Avenue  
Suite 600  
Dallas, Texas 75204  
(214) 871-3311

Owner / Developer  
**COLUMBUS REALTY TRUST**  
15851 Dallas Parkway  
Suite 605 LBS  
Dallas, Texas 75248  
(877) 387-1482

**HUITT  
ZOLIARS**

3131 McKinney Avenue, Suite 600  
Dallas, Texas 75204-2489  
Phone (214) 871-3311  
Fax (214) 871-0757



Revisions	No.	Date	Items
△			
△			
△			
△			
△	1/6/98		ADDED DRAIN

Drawn: \_\_\_\_\_  
Appr.: \_\_\_\_\_  
Scale: 1/8"=1'-0"  
Date: DEC. 23, 1997  
Project No.: 01-1822-30