

**LINE 2 STA. 9+75.00 =**  
PAV. STA. 9+70.07  
BEGIN 12" WATER  
INSTALL:  
1- 12" PLUG

**LINE 2 STA. 10+24.45 =**  
PAV. STA. 10+20.09  
INSTALL:  
1- 12" X 6" ANCHORING FH TEE  
1- 6" GATE VALVE/BOX  
15.5 LF 6" WATER  
1- FIRE HYDRANT  
CONCRETE BLOCKING

**LINE 2 STA. 10+16.66 =**  
LINE 4 STA. 21+01.85 =  
PAV. STA. 10+12.11  
INSTALL:  
1- 12" X 8" TEE  
1- 12" GATE VALVE/BOX  
CONCRETE BLOCKING

**LINE 2 STA. 11+95.00 =**  
PAV. STA. 11+94.86  
INSTALL:  
1- 12" X 6" ANCHORING FH TEE  
1- 6" GATE VALVE/BOX  
43 LF 6" WATER  
1- FIRE HYDRANT  
CONCRETE BLOCKING

**LINE 2 STA. 11+90.00 =**  
PAV. STA. 11+90.00  
INSTALL:  
1- 2" HERSEY MVR 160  
TURBINE METER  
2- BROOKS PRODUCTS  
NO. 65-H 17" X 28"  
PRE-CAST BOX  
1- 2" FEBCO 805Y DOUBLE  
CHECK VALVE ASSEMBLY

**LINE 2 STA. 12+26.00 =**  
PAV. STA. 12+26.00  
INSTALL:  
1- 1" DOMESTIC SERVICE  
(FOR COOLING TOWER)

**LINE 2 STA. 12+31.00 =**  
PAV. STA. 12+31.00  
INSTALL:  
1- 4" DOMESTIC WATER  
SERVICE INCLUDING  
BYPASS INSIDE VAULT  
1- 12" X 4" TEE  
1- 4" GATE VALVE/BOX  
CONCRETE BLOCKING

**LINE 2 STA. 12+38.50 =**  
PAV. STA. 12+38.50  
INSTALL:  
1- 6" FIRE SERVICE  
INCLUDING BYPASS INSIDE VAULT  
1- 12" X 6" TEE  
1- 6" GATE VALVE/BOX  
CONCRETE BLOCKING

**LINE 2 STA. 12+31.00 =**  
PAV. STA. 12+31.00  
INSTALL:  
1- 2" HERSEY MVR 160  
TURBINE METER  
2- BROOKS PRODUCTS  
NO. 65-H 17" X 28"  
PRE-CAST BOX  
1- 2" FEBCO 805Y DOUBLE  
CHECK VALVE ASSEMBLY

**LINE 2 STA. 13+32.83 =**  
PAV. STA. 13+32.83  
INSTALL:  
1- 2" PRIV. IRRIG. SERVICE

**LINE 2 STA. 13+75.00 =**  
PAV. STA. 13+75.00  
INSTALL:  
1- 12" X 6" ANCHORING FH TEE  
1- 6" GATE VALVE/BOX  
43 LF 6" WATER  
1- FIRE HYDRANT  
CONCRETE BLOCKING

**LINE 2 STA. 14+30.00 =**  
PAV. STA. 14+30.00  
INSTALL:  
1- 2" DOMESTIC (FOUNTAIN)  
WATER SERVICE

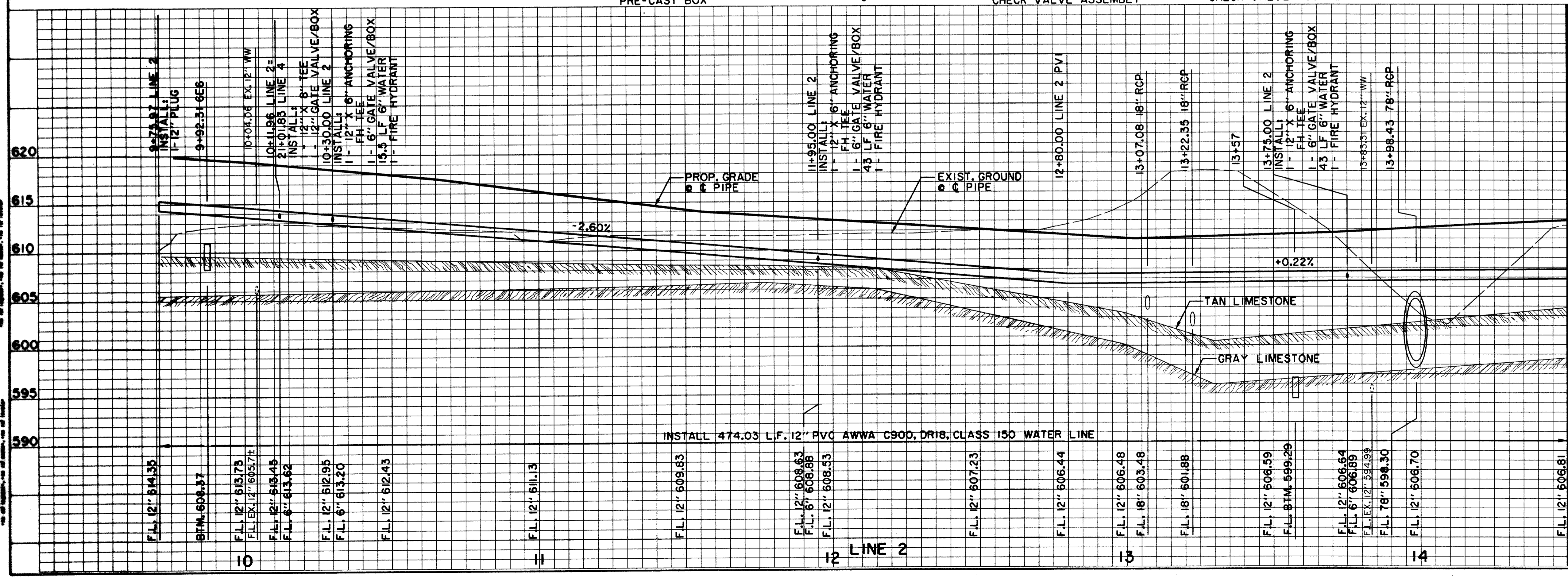
**LINE 2 STA. 14+40.00 =**  
PAV. STA. 14+40.00  
INSTALL:  
1- 2" DOMESTIC  
WATER SERVICE

**NOTE:**  
METERS, METER CANS, VAULTS AND  
BACKFLOW PREVENTION ASSEMBLIES  
TO BE INSTALLED AND TESTED PER  
TOWN OF ADDISON GENERAL  
REQUIREMENTS.

**LEGEND**

ELECTRIC — ONE —	48" RCP	MISC.
⊕ LIGHT POLE	EX. STORM SEWER	
PP POWER POLE	CHAIN LINK FENCE	
— GUY WIRE	WOOD FENCE	
TELEPHONE — T —	EXISTING ASPHALT	
TELEPHONE MANHOLE	EXISTING DIRT OR GRAVEL	
TELEPHONE PEDESTAL	EX. CONCRETE	
TELEPHONE SIGN	TREE/TREE LINE	
GAS — G —	EXISTING CURB	
GAS METER	PROP. CURB	
GAS SIGN	PROP. EDGE OF PAVEMENT NO CURB	
LAND USE	EX. PROPERTY LINE	
RAILROAD SIGN	PROP. CENTERLINE	
SIGN	PROP. R.O.W.	
FOUND IRON ROD	PROP. INLET	
BENCHMARK	T.P. TOP OF PAVEMENT	
WASTEWATER — WW —	T.C. TOP OF CURB	
WASTEWATER MANHOLE	CR CURB RETURN	
CLEANOUT	EX. G. EXISTING GUTTER	
WATER — W —	EX. T.C. EXISTING TOP OF CURB	
FIRE HYDRANT	B-20 BORING LOCATION	
METER	EXISTING BRICKS	
WATER VALVE	PAVEMENT REMOVAL	

**RECORD DRAWING**



**BENCHMARKS:**  
BM#5  
CUT ON NORTHWEST CORNER  
OF CONC. HDWL. FOR 7'X7' BOX  
CULVERT UNDER R.R. TRACKS,  
180 FEET WEST OF DALLAS  
PARKWAY SOUTHBOUND,  
ELEV. 610.49

THE SEAL APPEARING ON THIS  
DOCUMENT WAS AUTHORIZED BY  
DAVID E. MEYERS, P.E. 81512

DATE	DESCRIPTION	REF. NO.
1/12/98	ADDED SERVICE FOR COOLING TOWER	△
12/15/97	REVISED CURVE DATA LINE 2	△
11/20/97	DELETED FIRE & DOM. SERVICE	△
11/15/97	REVISED FIRE & DOM. SERVICE LOCATION	△
10/3/97	ISSUED FOR CONSTRUCTION	N/A
8/4/97	ADDENDUM NO. 1	△
7/14/97	ISSUED FOR BID	N/A

**WATER PLAN & PROFILE**  
**LINE 2 - SPECTRUM DRIVE**  
**ADDISON CIRCLE**  
**PHASE II PUBLIC INFRASTRUCTURE**  
**TOWN OF ADDISON, TEXAS**  
Hull-Zollars, Inc./Engineering/Architecture  
Dallas, Fort Worth, Houston, El Paso, Phoenix, Tustin, Ontario

DESIGN	DRAWN	APPR.	SCALE	DATE	PROJECT NO.	NO.
HZ1	HZ1	DEM	H <sub>1</sub> 1"=20' V <sub>1</sub> 1"=6'	OCT. 97	01-1822-21	W5

ALL DIMENSIONS UNLESS OTHERWISE SHOWN ARE IN FEET AND DECIMALS THEREOF.  
 ALL DISTANCES ARE TO CENTERLINE UNLESS OTHERWISE SHOWN.  
 ALL ELEVATIONS ARE TO MEAN SEA LEVEL UNLESS OTHERWISE SHOWN.  
 ALL CONSTRUCTION SHALL BE IN ACCORDANCE WITH THE LATEST EDITIONS OF THE  
 STANDARD SPECIFICATIONS FOR CONSTRUCTION OF PUBLIC WORKS, AS APPLICABLE.  
 ALL MATERIALS SHALL BE OF THE BEST QUALITY AVAILABLE.  
 ALL WORK SHALL BE DONE IN ACCORDANCE WITH THE LATEST EDITIONS OF THE  
 STANDARD SPECIFICATIONS FOR CONSTRUCTION OF PUBLIC WORKS, AS APPLICABLE.  
 ALL MATERIALS SHALL BE OF THE BEST QUALITY AVAILABLE.  
 ALL WORK SHALL BE DONE IN ACCORDANCE WITH THE LATEST EDITIONS OF THE  
 STANDARD SPECIFICATIONS FOR CONSTRUCTION OF PUBLIC WORKS, AS APPLICABLE.  
 ALL MATERIALS SHALL BE OF THE BEST QUALITY AVAILABLE.