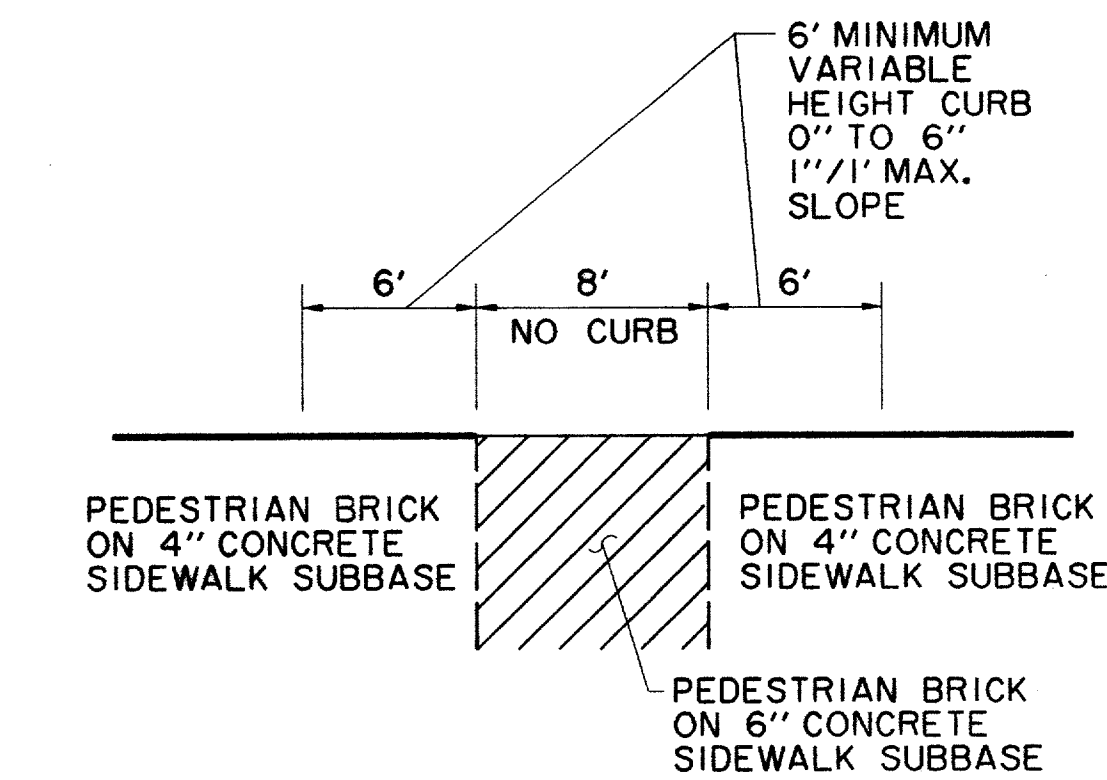
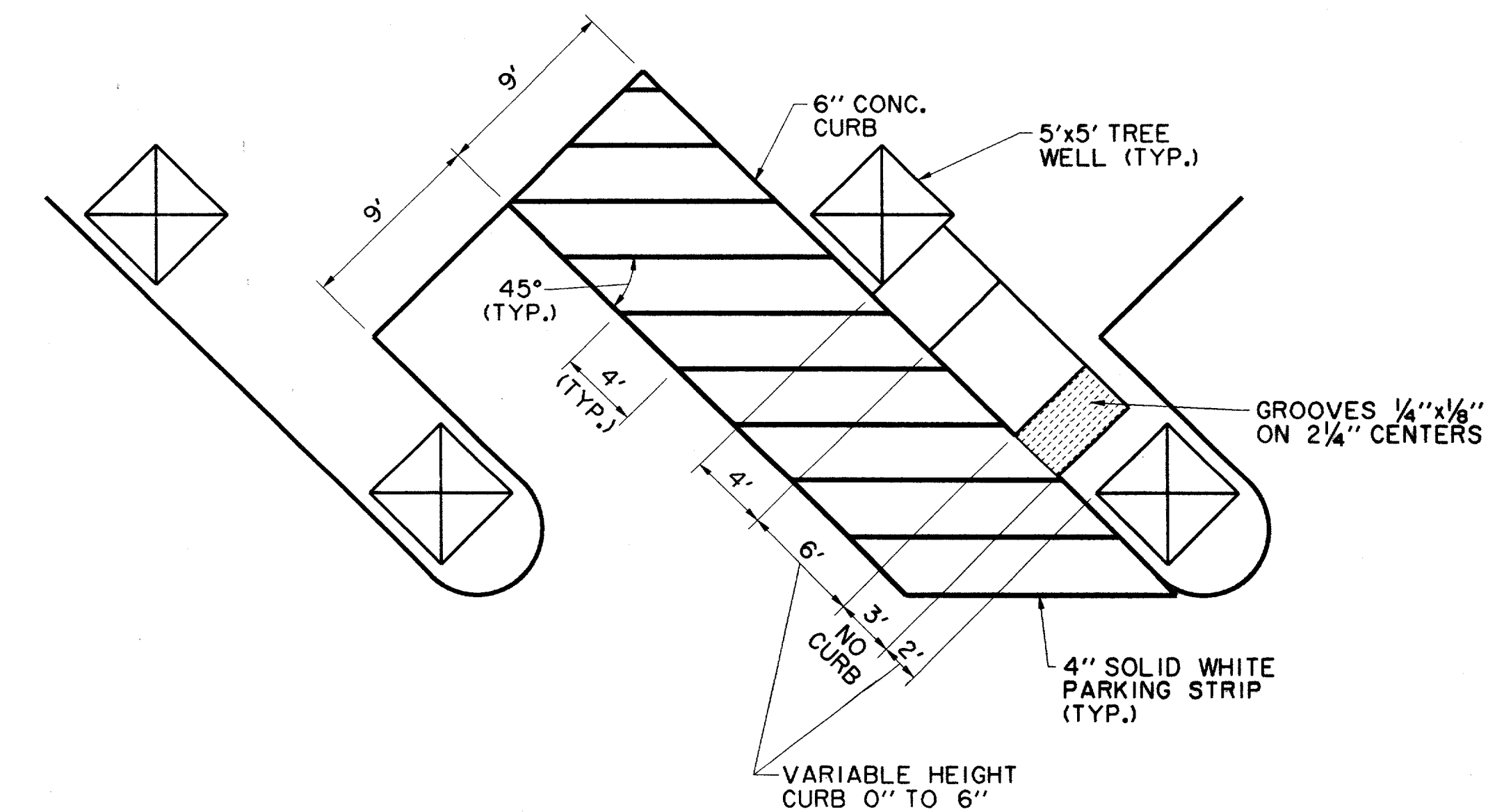


**DETECTABLE WARNING STRIP  
AT NE AND SW CORNERS OF  
ADDISON CIRCLE AND SPECTRUM DRIVE**



**CURB CUT FOR  
TRASH PICKUP**



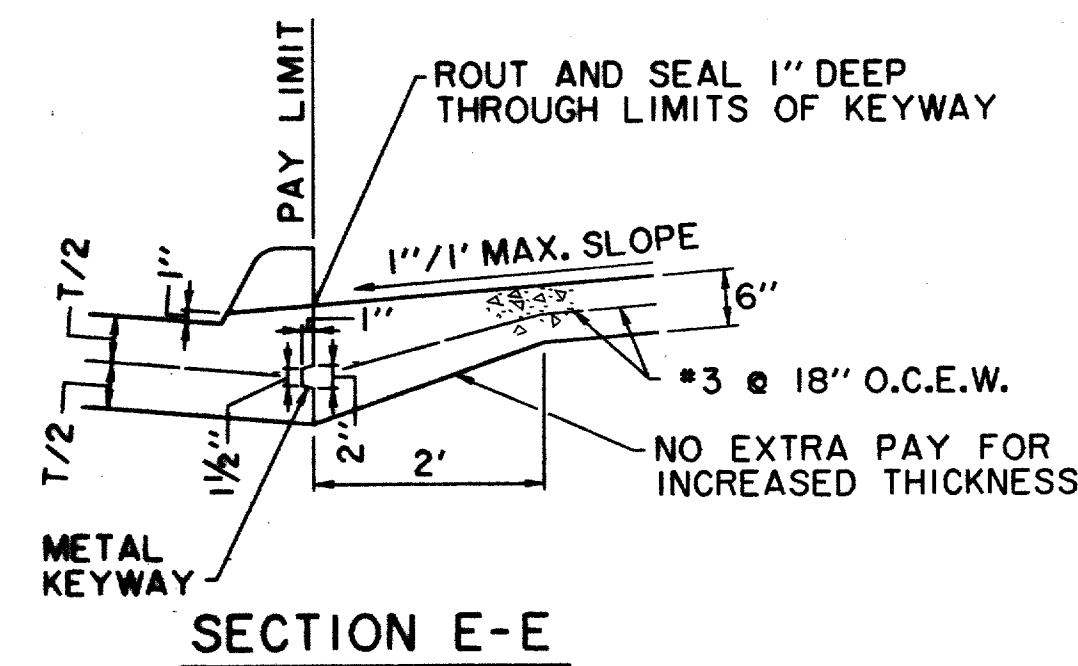
**BARRIER FREE RAMP DETAIL  
AT VAN ACCESSIBLE SPACE**

**BARRIER FREE RAMP  
GENERAL NOTES**

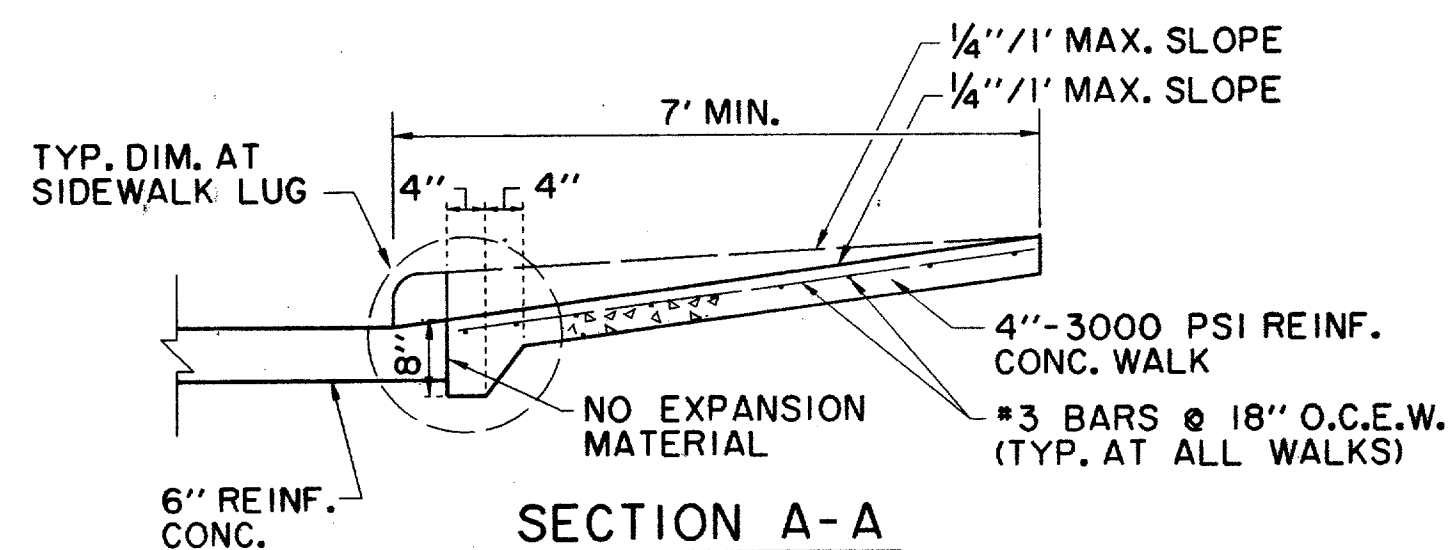
1. MAXIMUM SLOPE ON BARRIER FREE RAMPS MUST NOT EXCEED 1" PER FOOT AT ANY LOCATION.
2. DESIGNS SHOWN ARE FOR 6" CURBS. FOR CURBS WITH HEIGHT GREATER THAN 6" DIMENSIONS MUST BE INCREASED PROPORTIONATELY.
3. STREETS ON STEEP GRADE WILL REQUIRE LONGER TRANSITION ON UPGRADE SIDE.
4. LOCATION OF BARRIER FREE RAMP MAY BE SHIFTED TO CLEAR OBSTRUCTIONS.
5. CONCRETE TO HAVE MINIMUM 3000 P.S.I. COMPRESSIVE STRENGTH AT 28 DAYS.
6. REINFORCEMENT TO BE #3 DEFORMED BARS AT 18" O.C.E.W. AND SUPPORTED BY APPROVED BAR CHAIRS ON 3'-0" CENTERS.
7. GROOVES MUST BE CLEAN AND STRAIGHT FOR CLEAR DETECTION BY TOUCH WITH A CANE AND PARALLEL TO CROSSWALKS.

**NOTES:**

1. PAVEMENT JOINTS SHALL NOT EXTEND THROUGH DRIVE.
2. KEYWAY LIMITS SHALL COINCIDE WITH LIMITS OF 1" CURB.
3. REINFORCING STEEL SHALL NOT EXTEND THROUGH KEYWAY. DRIVE WILL NOT BE TIED TO PAVEMENT.
4. MAXIMUM SLOPE ON DRIVE IN ANY DIRECTION SHOULD BE 1 1/2" TO RESPECT PRINCIPLES OF BARRIER FREE CONSTRUCTION.
5. LENGTH OF TRANSITION FOR CURB AT EACH SIDE OF DRIVE MAY VARY DUE TO STREET GRADES AND REQUIREMENT TO HOLD MAXIMUM SLOPE OF 1 1/2".



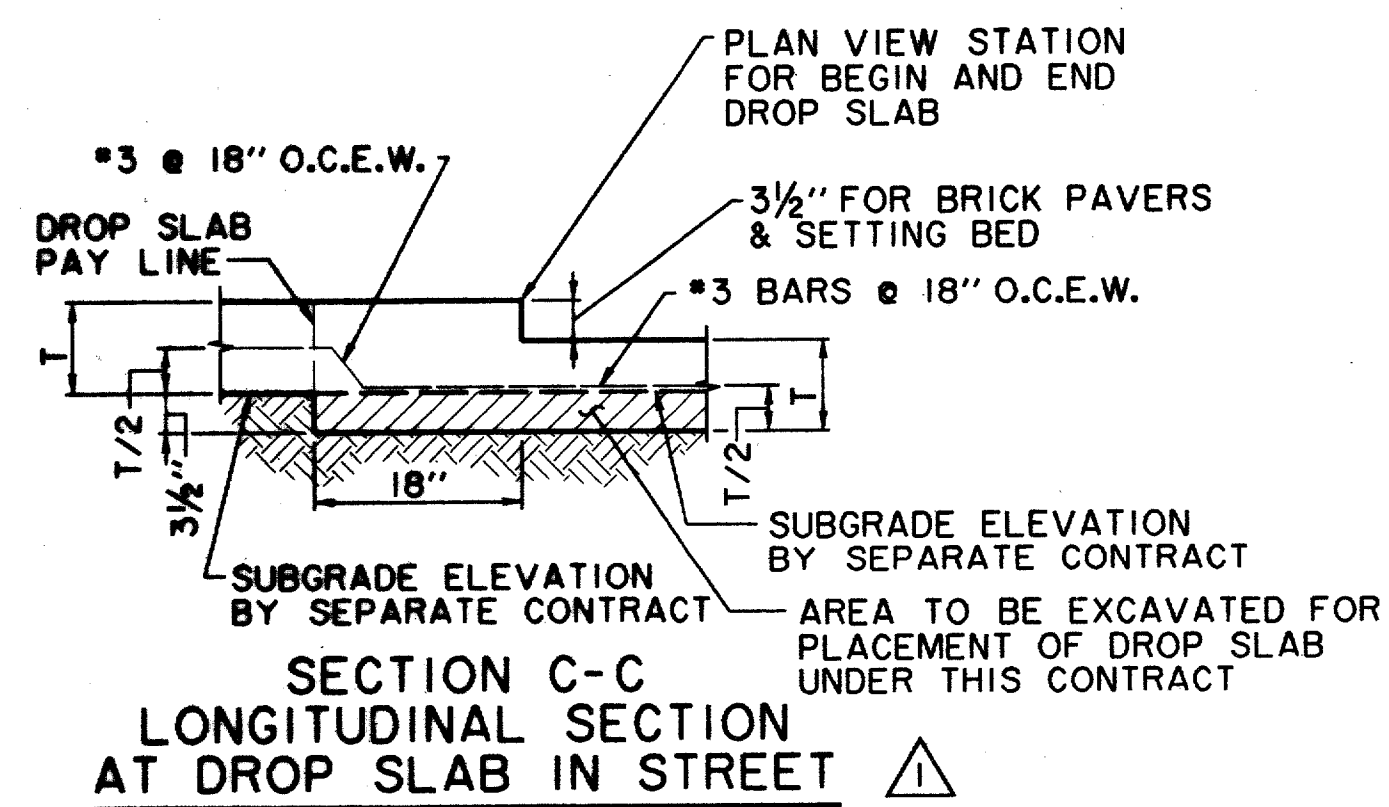
**SECTION E-E**



**SECTION A-A**

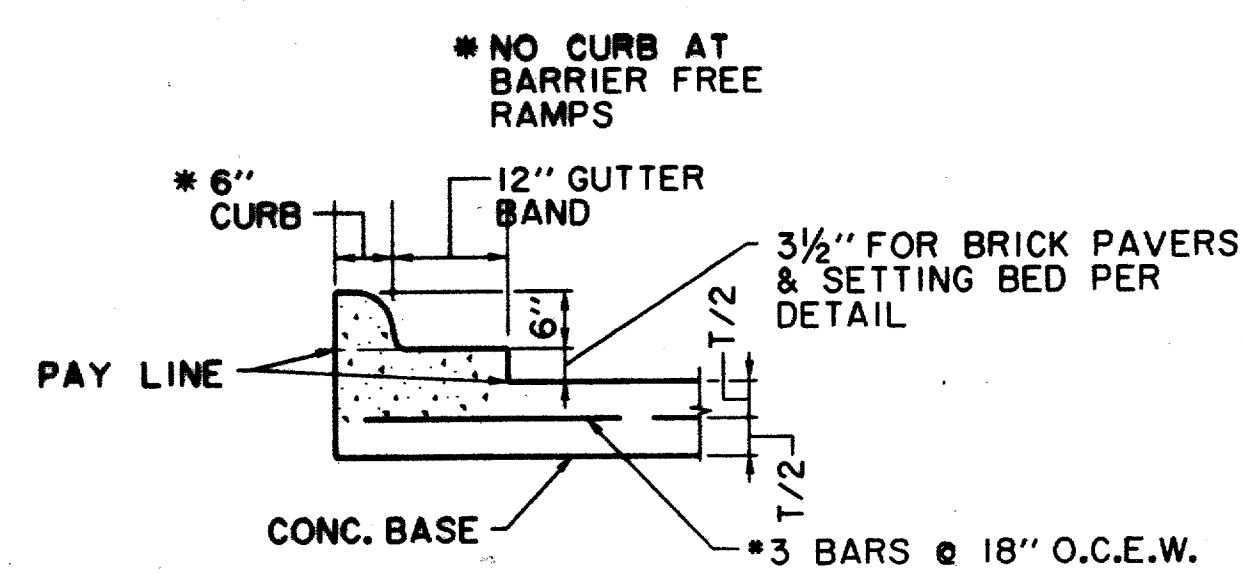
**NOTES:**

1. ALL HONEYCOMB IN BACK OF CURB SHALL BE TROWEL-PLASTERED BEFORE POURING SIDEWALK
2. LUG MAY BE FORMED BY SHAPING SUBGRADE TO APPROXIMATE DIMENSIONS SHOWN.



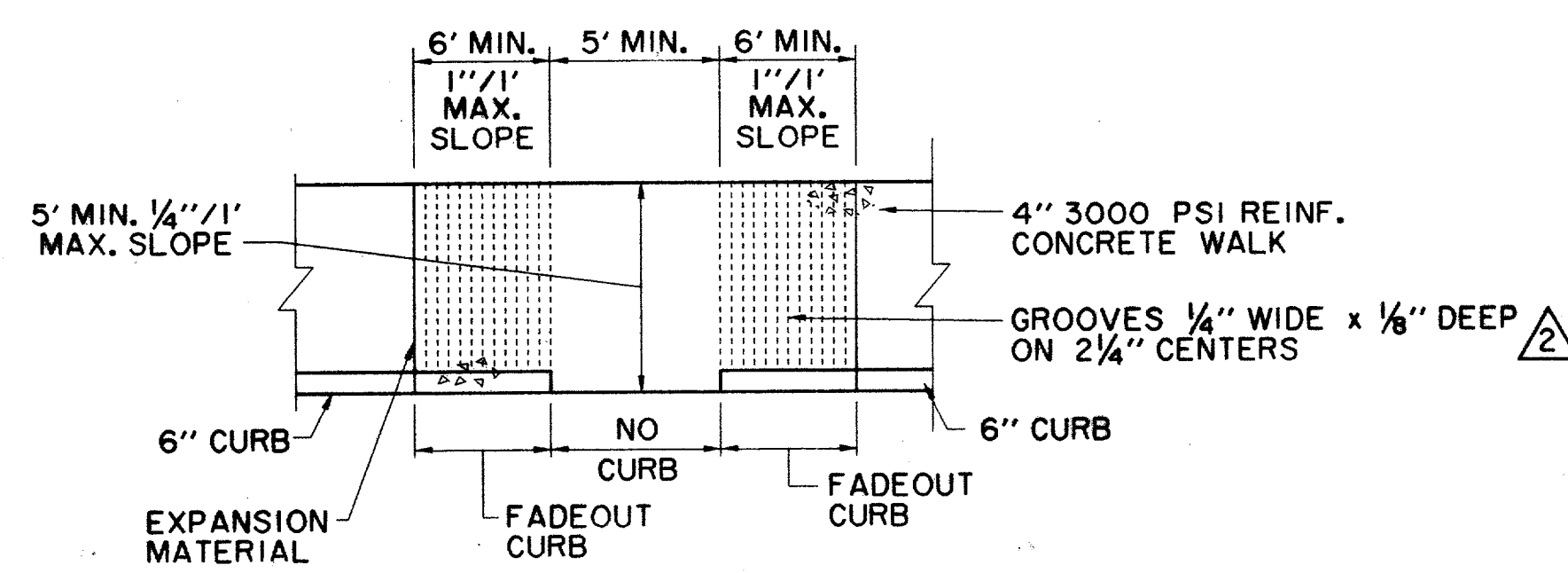
**SECTION C-C  
LONGITUDINAL SECTION  
AT DROP SLAB IN STREET**

N.T.S.

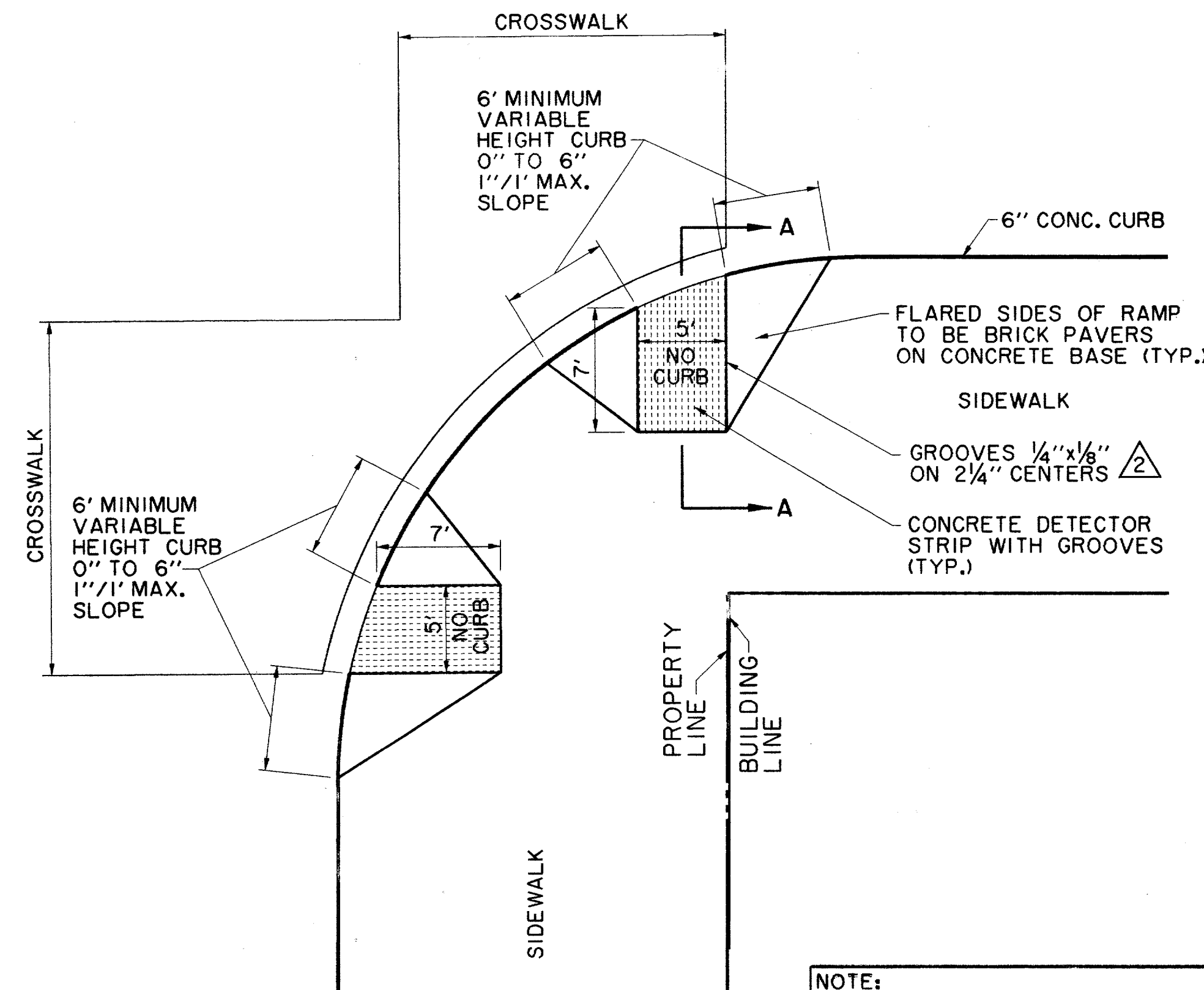


**SECTION D-D  
SECTION THRU CURB AT DROP SLAB**

N.T.S.



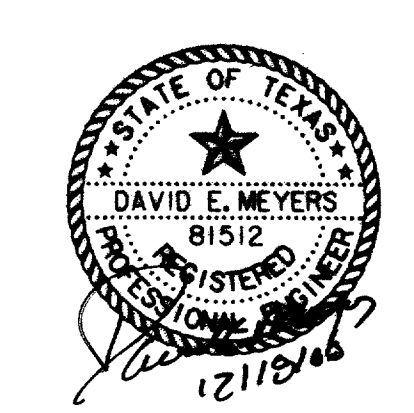
**BARRIER FREE RAMP IN STRAIGHT CURB  
SIDEWALK ADJACENT TO CURB**



**BARRIER FREE RAMP DETAIL  
AT INTERSECTING STREET**

NOTE: BARRIER FREE RAMPS SHALL HAVE A GROOVED FINISH 1/4" WIDE X 1/8" DEEP ON 2 1/4" CENTERS AND ALIGNED PARALLEL WITH THE CROSSWALK OR PEDESTRIAN MOVEMENT TO THE OPPOSITE SIDE OF THE STREET.

THE SEAL APPEARING ON THIS DOCUMENT WAS AUTHORIZED BY DAVID E. MEYERS, P.E. 81512



**RECORD  
DRAWING**

DATE	DESCRIPTION	REF. NO.
2/13/98	REVISED BARRIER FREE RAMP DETAIL	3
10/3/97	ISSUED FOR CONSTRUCTION	N/A
10/1/97	REVISED BARRIER FREE RAMP	2
8/1/97	ADDENDUM NO. 1	1
7/14/97	ISSUED FOR BID	N/A

**PAVING DETAILS**

**ADDISON CIRCLE**

**PHASE II PUBLIC INFRASTRUCTURE**

**TOWN OF ADDISON, TEXAS**

Huitt-Zollars, Inc./Engineering/Architecture  
Dallas, Fort Worth, Houston, El Paso, Phoenix, Tustin, Ontario

DESIGN	DRAWN	APPR.	SCALE	DATE	PROJECT NO.	NO.
HZI	HZI	DEM	N.T.S.	OCT. 97	01-1822-21	P22