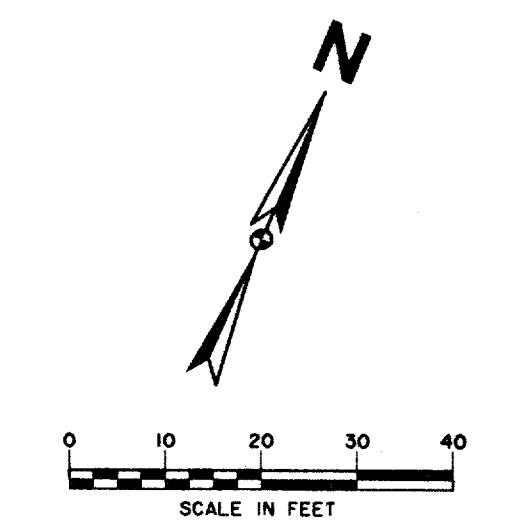


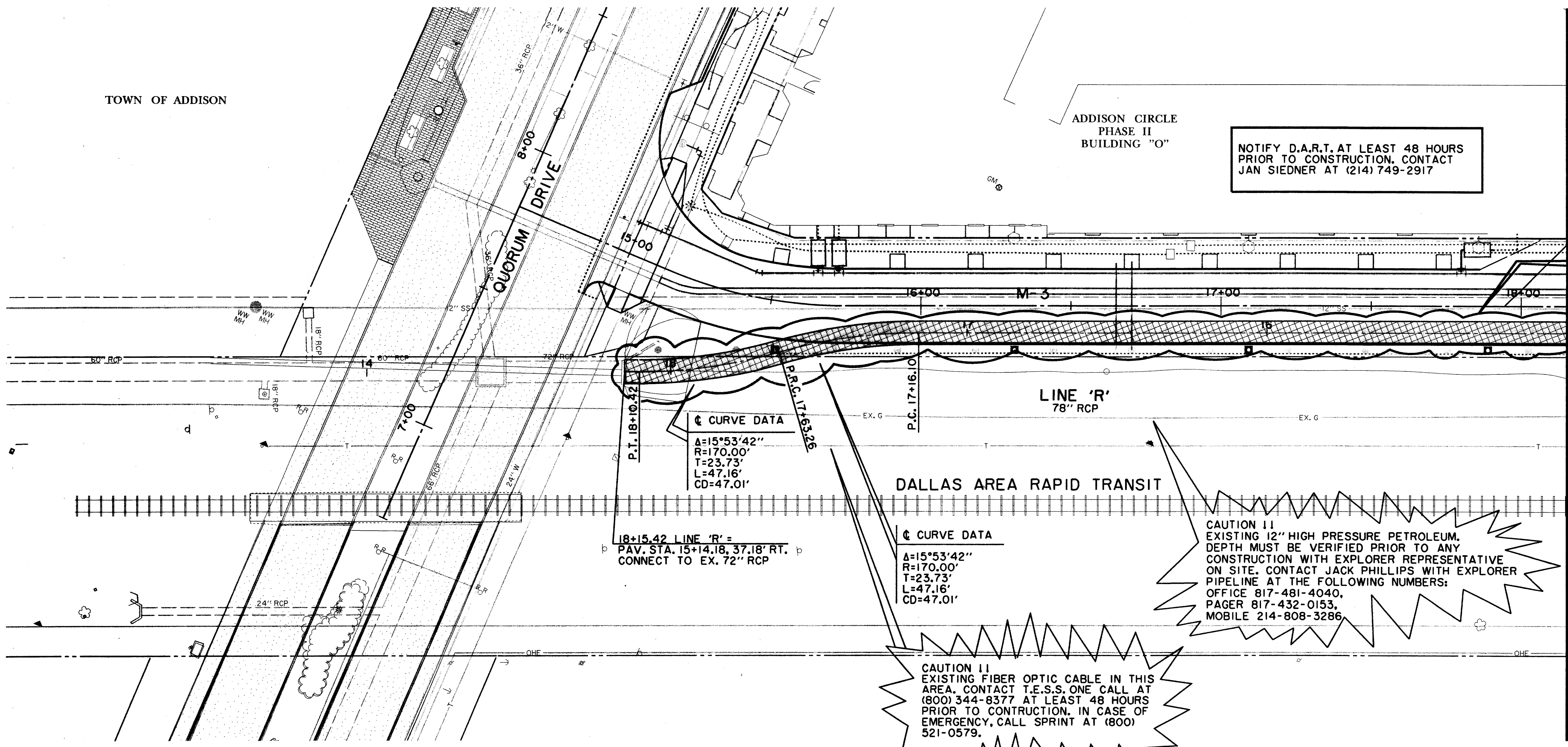
TOWN OF ADDISON

ADDISON CIRCLE
PHASE II
BUILDING "O"

NOTIFY D.A.R.T. AT LEAST 48 HOURS
PRIOR TO CONSTRUCTION. CONTACT
JAN SIEDNER AT (214) 749-2917



TRUNK LINE "R" AND CONNECTION
TO EXIST. 72" RCP WERE CONSTRUCTED
WITH THE ADDISON CIRCLE PHASE II
MASS GRADING PROJECT UNDER A
SEPARATE CONTRACT.



☺ CURVE DATA
Δ=15°53'42"
R=170.00'
T=23.73'
L=47.16'
CD=47.01'

DALLAS AREA RAPID TRANSIT

☺ CURVE DATA
Δ=15°53'42"
R=170.00'
T=23.73'
L=47.16'
CD=47.01'

CAUTION !!
EXISTING 12" HIGH PRESSURE PETROLEUM.
DEPTH MUST BE VERIFIED PRIOR TO ANY
CONSTRUCTION WITH EXPLORER REPRESENTATIVE
ON SITE. CONTACT JACK PHILLIPS WITH EXPLORER
PIPELINE AT THE FOLLOWING NUMBERS:
OFFICE 817-481-4040,
PAGER 817-432-0153,
MOBILE 214-808-3286.

CAUTION !!
EXISTING FIBER OPTIC CABLE IN THIS
AREA. CONTACT T.E.S.S. ONE CALL AT
(800) 344-8377 AT LEAST 48 HOURS
PRIOR TO CONSTRUCTION. IN CASE OF
EMERGENCY, CALL SPRINT AT (800)
521-0579.

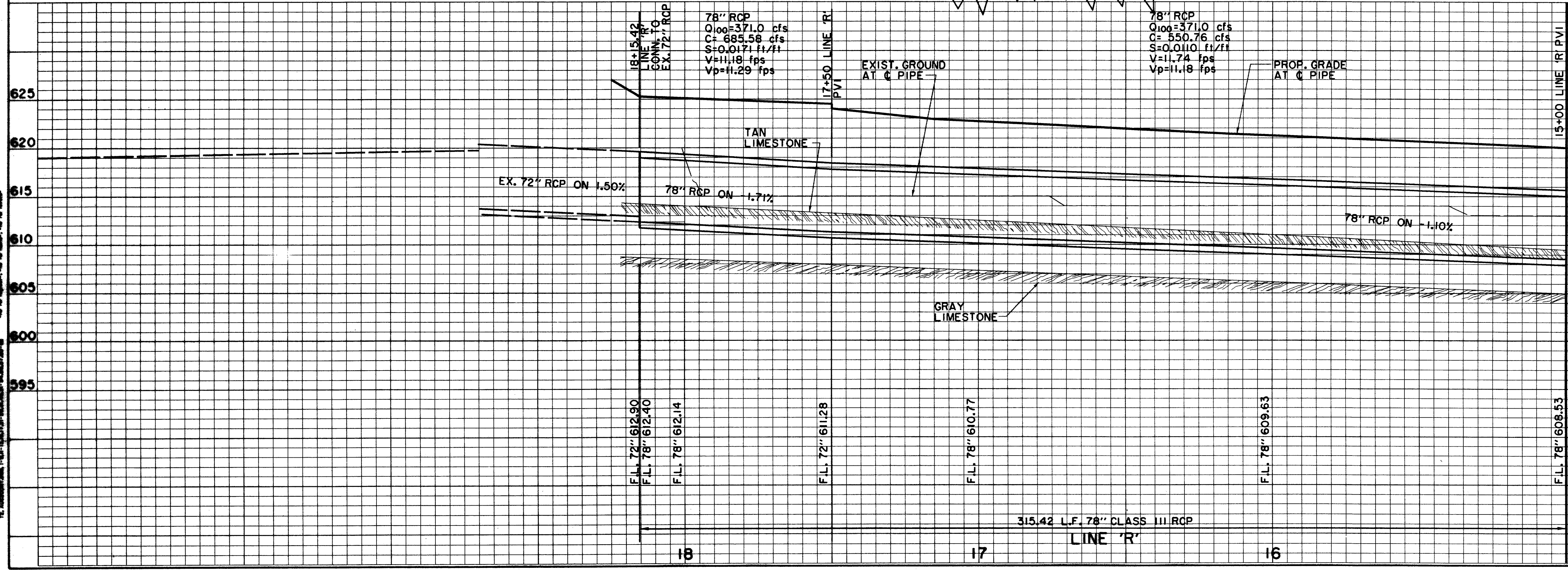
18+15.42 LINE 'R' =
PAV. STA. 15+14.18, 37.18' RT.
CONNECT TO EX. 72" RCP

MATCH LINE PAV. STA. 18+15.33 = LINE 'R' STA. 15+00

RECORD
DRAWING

LEGEND

ELECTRIC — ONE —	48" RCP	MISC.
○ LIGHT POLE	—	EX. STORM SEWER
pp POWER POLE	—	CHAIN LINK FENCE
— GUY WIRE	—	WOOD FENCE
TELEPHONE — T —	—	EXISTING ASPHALT
TELEPHONE MANHOLE	—	EXISTING DIRT OR GRAVEL
TELEPHONE PEDESTAL	—	EX. CONCRETE
TELEPHONE SIGN	—	TREE/TREE LINE
GAS — G —	—	EXISTING CURB
GAS METER	—	PROP. CURB
GAS SIGN	—	PROP. EDGE OF PAVEMENT NO CURB
LAND USE	—	EX. PROPERTY LINE
RAILROAD SIGN	—	PROP. CENTERLINE
SIGN	—	PROP. R.O.W.
SURVEY	—	PROP. INLET
FOUND IRON ROD	—	T.P.
BENCHMARK	—	T.C.
WASTEWATER — WW —	—	TOP OF CURB
WASTEWATER MANHOLE	—	CR
CLEANOUT	—	EXISTING GUTTER
WATER — W —	—	EX. T.C.
FIRE HYDRANT	—	B-20
METER	—	EXISTING BRICKS
WATER VALVE	—	PAVEMENT REMOVAL



BENCHMARKS:
BM#1
"C" CUT AT CENTER BACK OF
CURB OF INLET, 190 FEET
SOUTH FROM THE CENTERLINE
INTERSECTION OF MILDRED
STREET, WEST SIDE OF QUORUM
DRIVE.
ELEV. 621.89
BM#4
"C" CUT AT CENTER OF CURB
INLET, 1015 FEET NORTH FROM
THE CENTERLINE INTERSECTION
OF MILDRED STREET, WEST
SIDE OF QUORUM DRIVE.
ELEV. 629.36

THE SEAL APPEARING ON THIS
DOCUMENT WAS AUTHORIZED BY
DAVID E. MEYERS, P.E. 81512

DATE	DESCRIPTION	REF. NO.
10/3/97	ISSUED FOR CONSTRUCTION	N/A
7/14/97	ISSUED FOR BID	N/A

STORM WATER PLAN & PROFILE
LINE 'R' STA. 15+00 TO STA. 18+14.14

ADDISON CIRCLE
PHASE II PUBLIC INFRASTRUCTURE
TOWN OF ADDISON, TEXAS

Huitt-Zollars, Inc./Engineering/Architecture
Dallas, Fort Worth, Houston, El Paso, Phoenix, Tustin, Ontario

DESIGN	DRAWN	APPR.	SCALE	DATE	PROJECT NO.	NO.
HZI	HZI	DEM	H ₁ 1"=20' V ₁ 1"=8'	OCT. 97	01-1822-21	SW21

HUIIT-ZOLLARS, INC.
 1100 WEST WILLOW STREET, SUITE 100
 FORT WORTH, TEXAS 76104
 TEL: (817) 335-1100
 FAX: (817) 335-1101
 WWW.HUIIT-ZOLLARS.COM

HUIIT-ZOLLARS, INC.
 1100 WEST WILLOW STREET, SUITE 100
 FORT WORTH, TEXAS 76104
 TEL: (817) 335-1100
 FAX: (817) 335-1101
 WWW.HUIIT-ZOLLARS.COM