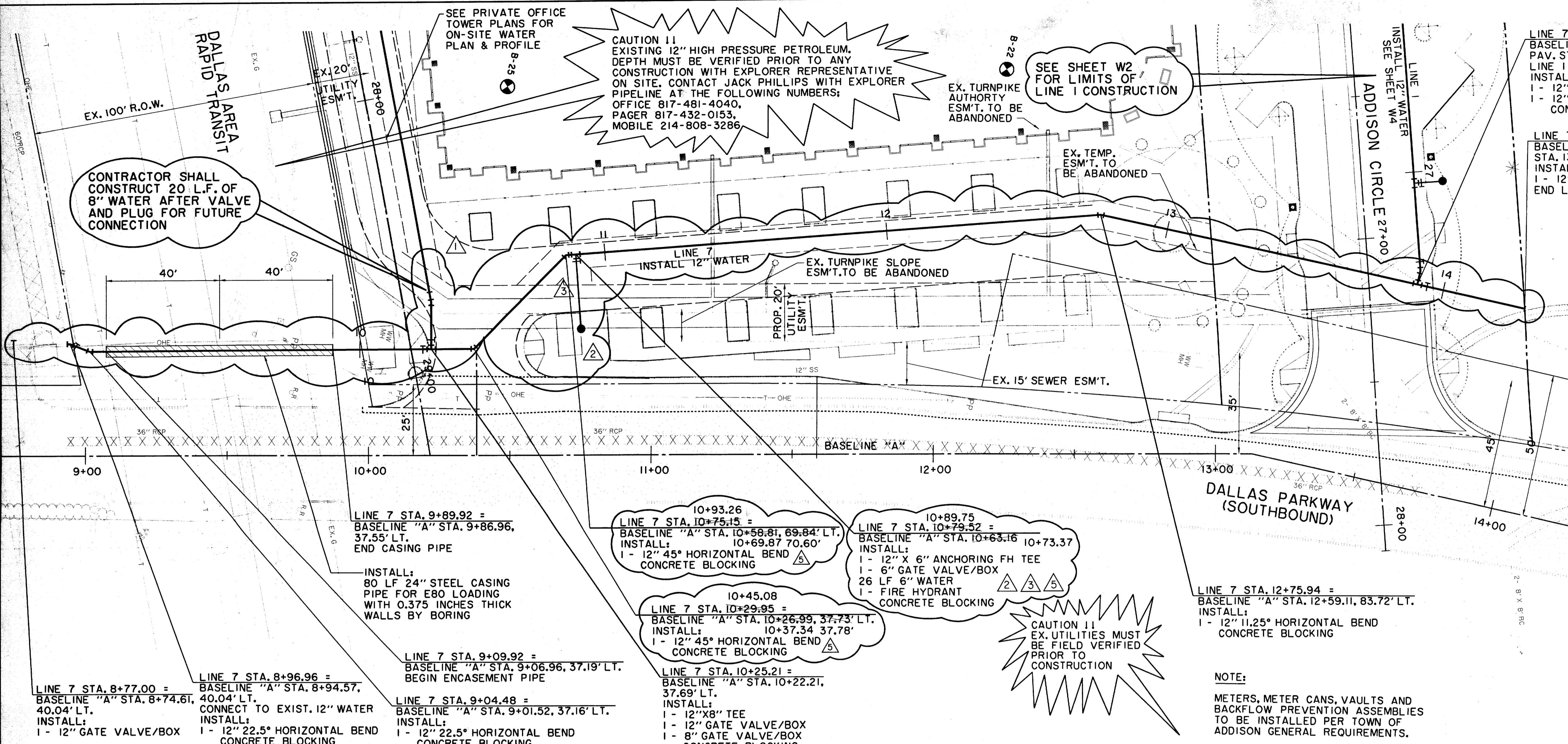


B26-4  
ACT II MASS GRADING (M-1-3)



LINE 7 STA. 13+90.63 =  
BASELINE "A" STA. 13+56.88, 70.00' LT. =  
PAV. STA. 27+17.36, 17.08' LT. =  
LINE 1 STA 27+39.51  
INSTALL:  
1 - 12" X 12" TEE  
1 - 12" GATE VALVE/BOX  
CONCRETE BLOCKING

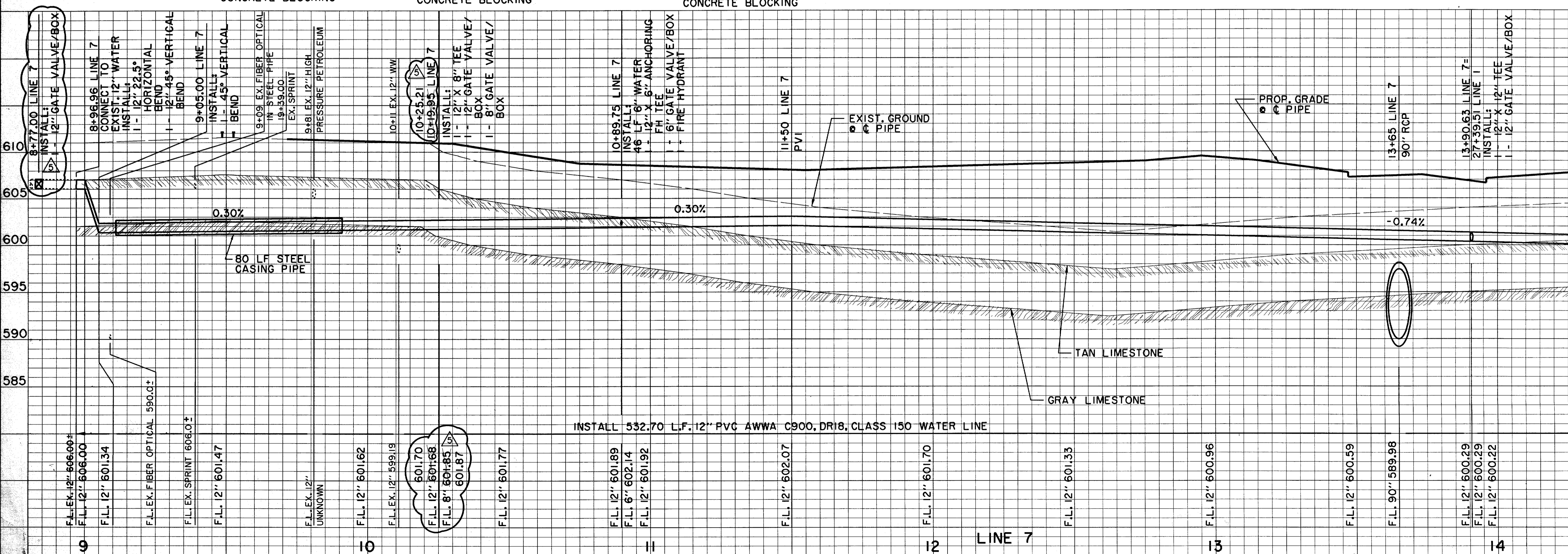
LINE 7 STA. 14+29.66 =  
BASELINE "A" STA. 13+95.91, 70.00' LT.  
INSTALL:  
1 - 12" PLUG  
END LINE 7

CONTRACTOR TO CONSTRUCT  
LINE 7 AND A PORTION OF LINE  
1 AS PART OF THIS CONTRACT

RECORD DRAWING:  
THIS DRAWING HAS BEEN MODIFIED FROM THE ORIGINAL DESIGN DRAWINGS TO REFLECT THE FIELD CHANGES THAT OCCURRED DURING CONSTRUCTION WHICH WERE DOCUMENTED AND FURNISHED TO THE ENGINEER BY THE CONTRACTOR. BASED ON THIS INFORMATION AND THE ENGINEER'S OBSERVATION OF CERTAIN CONSTRUCTION ACTIVITIES, TO THE BEST OF THE ENGINEER'S KNOWLEDGE AND BELIEF, THE PROJECT IS CONSTRUCTED IN CONFORMANCE WITH THE PLANS AND SPECIFICATIONS AND WILL FUNCTION AS DESIGNED.

**LEGEND**

ELECTRIC - OHE	48" RCP	MISC.
○ LIGHT POLE	EX. STORM SEWER	
PP POWER POLE	CHAIN LINK FENCE	
○ GUY WIRE	WOOD FENCE	
TELEPHONE	EXISTING ASPHALT	
TELEPHONE MANHOLE	EXISTING DIRT OR GRAVEL	
TELEPHONE PEDESTAL	EX. CONCRETE	
TELEPHONE SIGN	TREE/TREE LINE	
GAS - G	EXISTING CURB	
GAS METER	PROP. EDGE OF PAVEMENT NO CURB	
GAS SIGN	EX. PROPERTY LINE	
LAND USE	PROP. CENTERLINE	
RAILROAD SIGN	PROP. R.O.W.	
SIGN	PROP. INLET	
SURVEY	T.P. TOP OF PAVEMENT	
FOUND IRON ROD	T.C. TOP OF CURB	
BENCHMARK	CR CURB RETURN	
WASTEWATER - WW	EX. G EXISTING GUTTER	
WASTEWATER MANHOLE	EX. T.C. EXISTING TOP OF CURB	
CLEANOUT	B-20 BORING LOCATION	
FIRE HYDRANT	EXISTING BRICKS	
METER	PAVEMENT REMOVAL	
WATER VALVE		



**BENCHMARKS:**  
BM\*5  
CUT AT NORTHWEST CORNER OF NORTH HDWL. OF 7'X7' BOX CULVERT UNDER RAILROAD, ±180' WEST OF DALLAS PARKWAY SOUTHBOUND, ELEV. 610.49

THE SEAL APPEARING ON THIS DOCUMENT WAS AUTHORIZED BY DAVID E. MEYERS, P.E. 81512 ON 12/27/97

STATE OF TEXAS  
DAVID E. MEYERS  
REGISTERED PROFESSIONAL ENGINEER  
No. 81512

DATE	DESCRIPTION	REF. NO.
10/27/97	RECORD DRAWING	5
8/4/97	REVISED ELEVATION ON BENCHMARK *5	4
7/24/97	REVISED HYDRANT LOCATION	3
6/26/97	REVISED HYDRANT LOCATION	2
6/16/97	ISSUED FOR CONSTRUCTION	N/A
6/10/97	ADDENDUM NO. 1; ADD 20 L.F. 8" W	1
6/2/97	ISSUED FOR BID	N/A

**WATER PLAN & PROFILE**  
LINE 7 - DALLAS PARKWAY (SOUTHBOUND)  
ADDISON CIRCLE  
PHASE II MASS GRADING  
TOWN OF ADDISON, TEXAS

Hull + Zolters, Inc./Engineering/Architecture  
Dallas, Fort Worth, Houston, El Paso, Phoenix, Austin, Ontario

DESIGN	DRAWN	APPR.	SCALE	DATE	PROJECT NO.	NO.
HZI	HZI	DEM	H:1"=20' V:1"=6'	JUN. 97	01-1822-34	W1