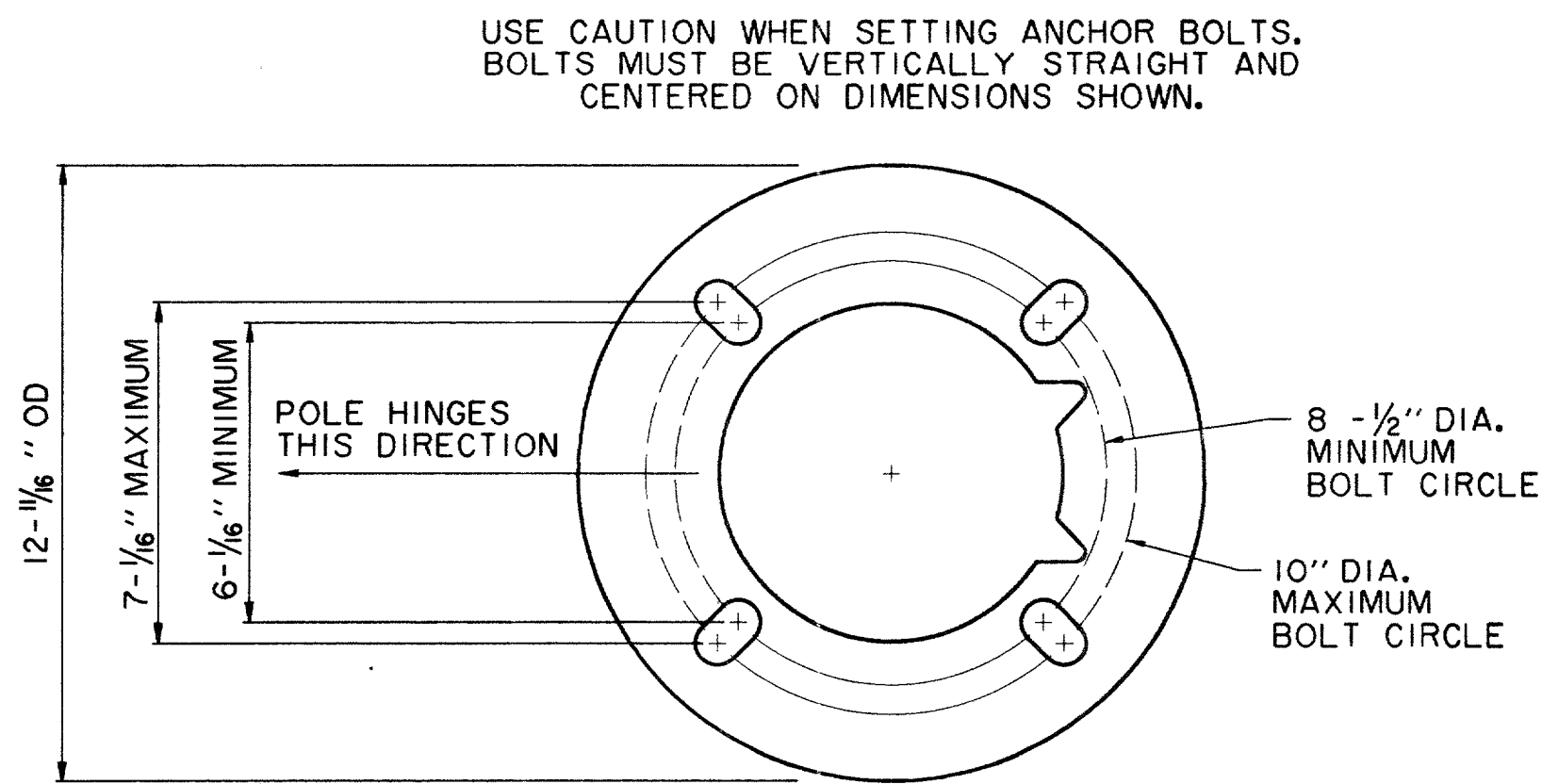


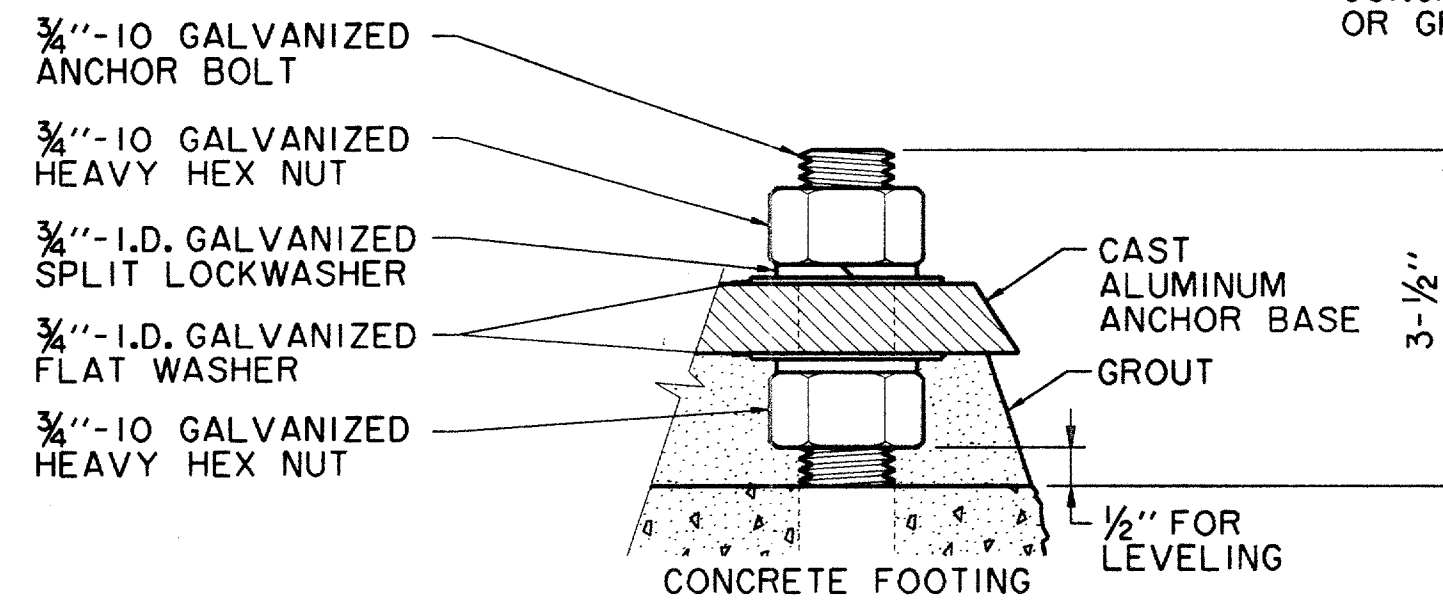
* UNLESS OTHERWISE NOTED IN PLANS

LIGHT FIXTURE PLACEMENT DETAIL
N.T.S.

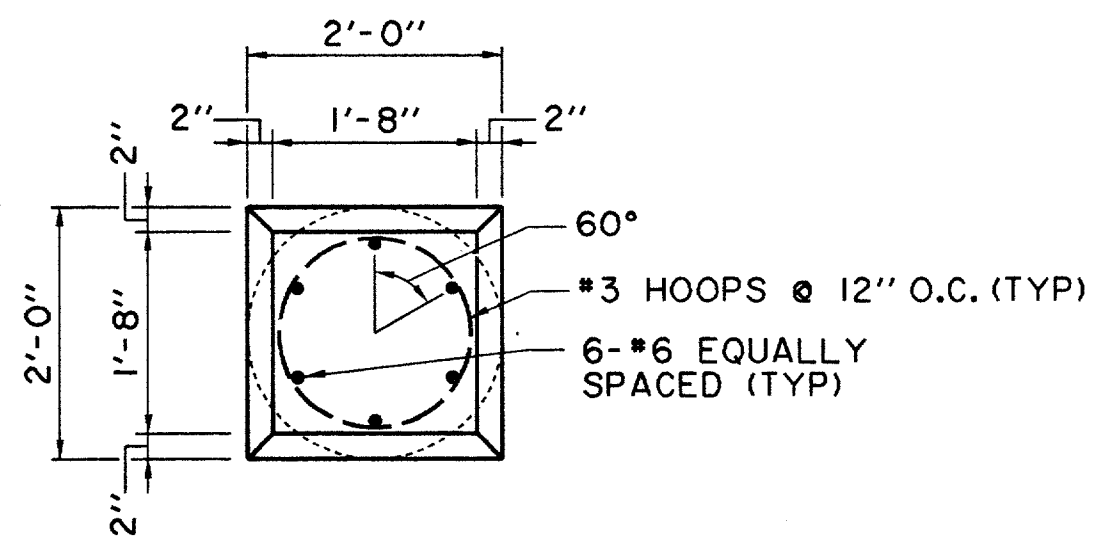


ROUND BOTTOM HINGE BASE ANCHOR BOLT TEMPLATE
N.T.S.

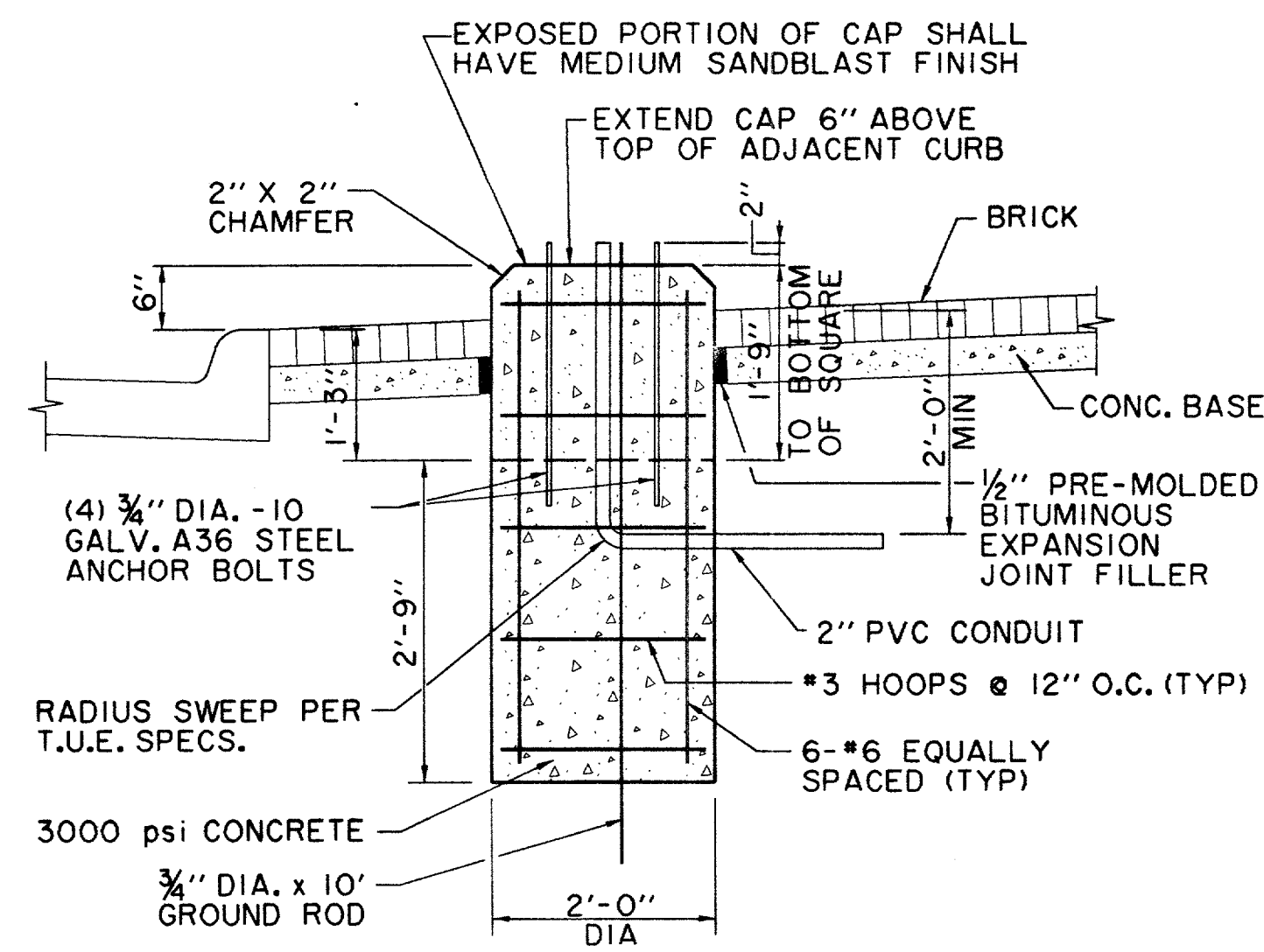
NOTE:
ADEQUATE DRAINAGE MUST BE PROVIDED IN CONCRETE FOUNDATION OR GROUT.



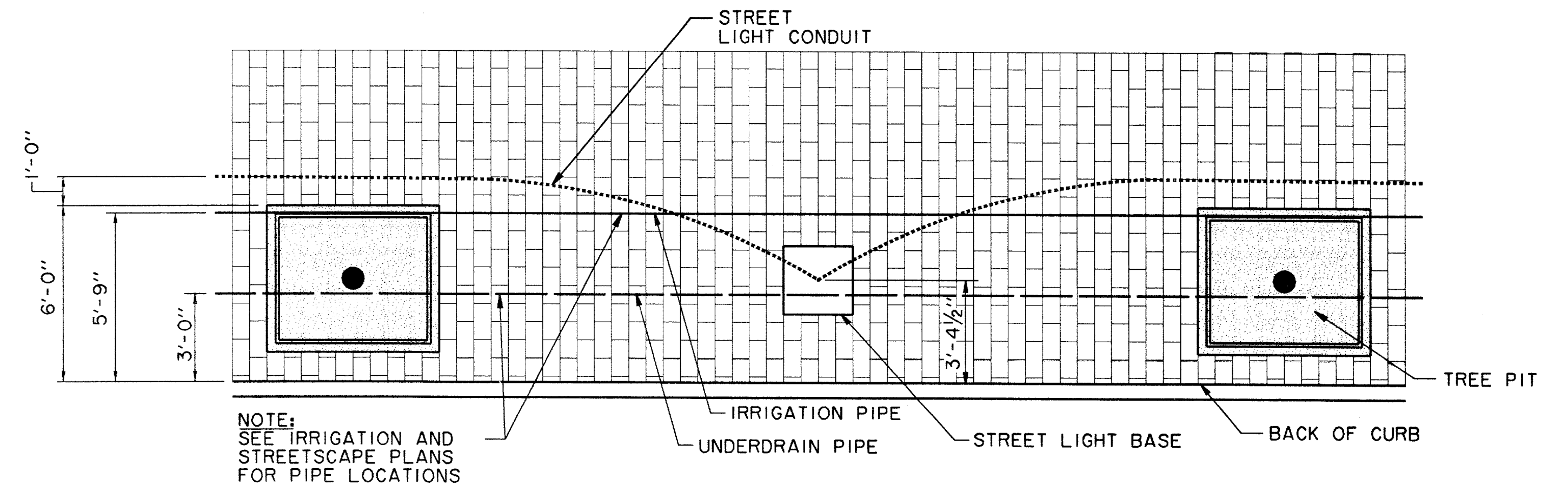
BOLT PROJECTION DETAIL
N.T.S.



LIGHT FIXTURE FOUNDATION AND CAP PLAN
N.T.S.

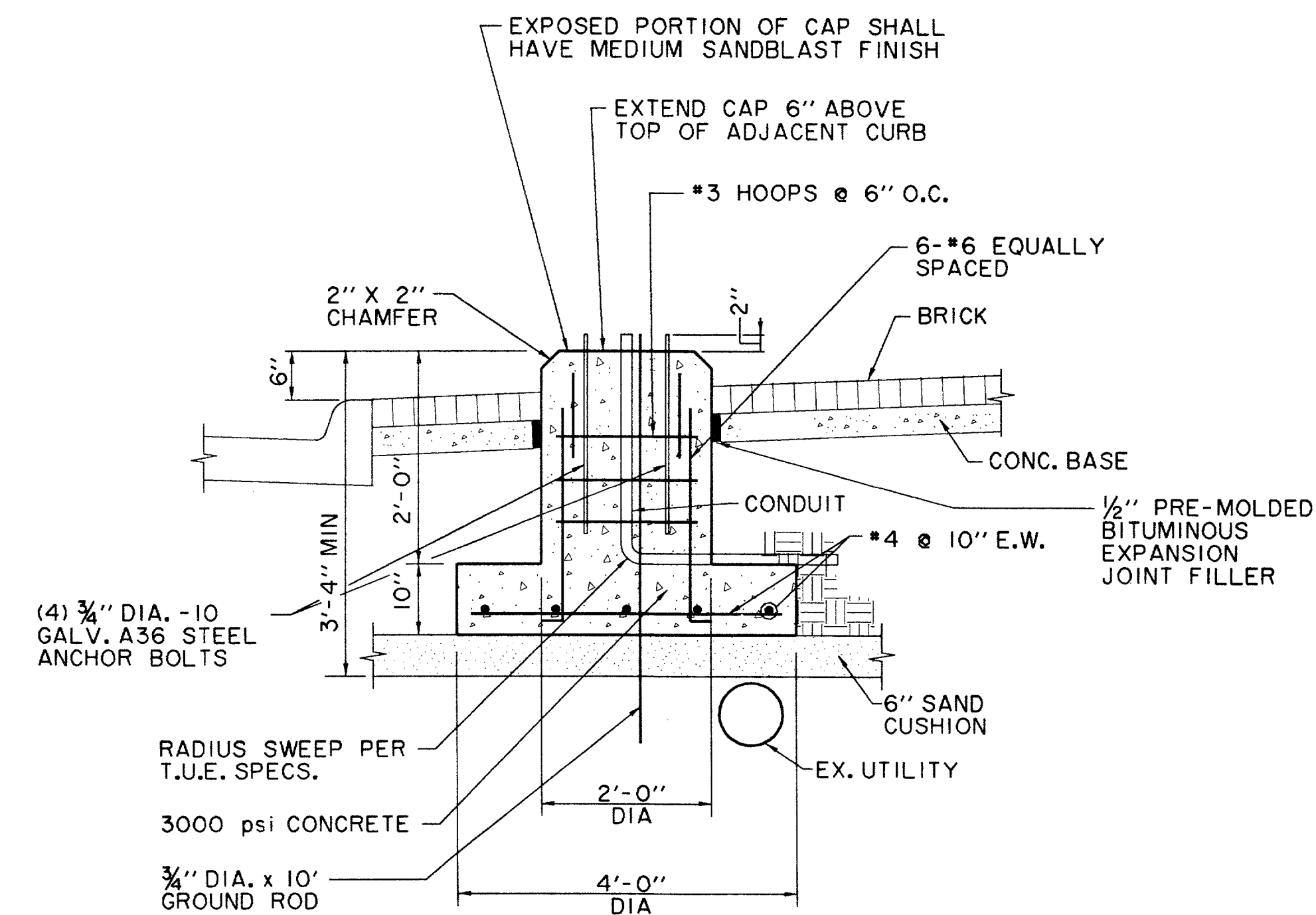


LIGHT FIXTURE FOUNDATION AND CAP SECTION
N.T.S.



NOTE:
SEE IRRIGATION AND STREETSCAPE PLANS FOR PIPE LOCATIONS

STREET LIGHT CONDUIT DETAIL
CONDUIT SHALL BE DEFLECTED AROUND TREE PIT LOCATIONS - TYPICAL
N.T.S.



ALTERNATE LIGHT FIXTURE FOOTING AT UTILITY CONFLICT
N.T.S.

(NOT TO BE USED FOR HANGING LIGHT FOUNDATION)

STREET LIGHTING NOTES

1. THE STREET LIGHTING FOR THIS PROJECT WILL CONSIST OF INSTALLATION OF 2" PVC CONDUIT, LIGHT POLE BASES, PULL BOXES (HANDHOLES) LIGHT POLES, LUMINAIRES, WIRING AND CONNECTION TO POWER SOURCE AS A COMPLETE SYSTEM PER DETAILED SPECIFICATIONS.
2. ALL STREET LIGHTING CONDUIT IS TO BE INSTALLED WITH A MINIMUM OF 24 INCHES OF COVER TO THE TOP OF THE PIPE FROM FINISHED PAVEMENT TO AVOID CONFLICT WITH IRRIGATION LINES WHICH WILL BE AT 12" AND 18" DEPTH. CONDUIT SHOULD BE NO DEEPER THAN 36" TO AVOID CONFLICT WITH OTHER UTILITIES.
3. FOR THE PURPOSES OF COORDINATION, PEDESTRIAN LIGHTS TO BE INSTALLED PER THE STREETSCAPE PLANS FOR THIS PROJECT WILL BE THE FOLLOWING:
SEE SHEET E21 FOR POLE TYPES.

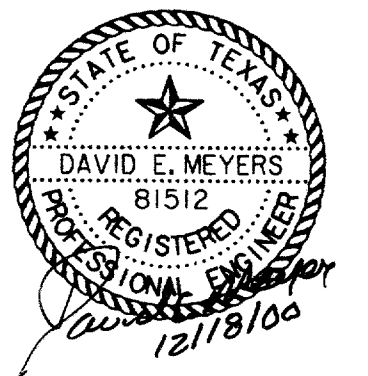
THIS POLE WILL BE INSTALLED WITH A 175 WATT METAL HALIDE BEGA 9801 ED-17MH/120V FIXTURE AND LUMINAIRE.

POLES WILL BE PRIMED AND PAINTED AT THE FACTORY.

4. LOCATIONS OF ANY STREET LIGHTS MAY NOT BE ALTERED WITHOUT PERMISSION FROM THE ENGINEER.

RECORD DRAWING

THE SEAL APPEARING ON THIS DOCUMENT WAS AUTHORIZED BY DAVID E. MEYERS, P.E. 81512



DATE	DESCRIPTION	REF. NO.
6/23/99	ISSUED FOR CONSTRUCTION	N/A
5/17/99	ISSUED FOR BID	N/A

LIGHTING DETAILS
ADDISON CIRCLE
PHASE II-B PUBLIC INFRASTRUCTURE
TOWN OF ADDISON, TEXAS

HUTT - 2010rs, Inc.
3131 McKinney Ave., Suite 600, Dallas, TX 75204
Phone (214) 871-3311/Fax (214) 871-0757

DESIGN	DRAWN	APPR.	SCALE	DATE	PROJECT NO.	NO.
HZI	HZI	DEM	N.T.S.	MAR. 99	01-1822-50	ST5