

LOT 1, BLOCK A
SHEPHERD ADDITION
VOL.97214 PG.04261

(TRACT 1)
CROSSROADS AVIATION, INC.
VOL.67044 PG.0213

(TRACT 2)
CROSSROADS AVIATION, INC.
VOL.67044 PG.0213

(TRACT 1)
D.A. CODY
HIS HEIRS & ASSIGNS
VOL.71165 PG.2799

(TRACT 2)
D.A. CODY
HIS HEIRS & ASSIGNS
VOL.71165 PG.2799

BARCO MIRROR & GLASS, INC.
VOL.79020 PG.0875

(TRACT 2)
AVIS RENT A CAR SYSTEM, INC.
VOL.98089 PG.03138

HAYES PROPERTIES ADDITION
VOL.83083 PG.1059

(TRACT 1)
AVIS RENT A CAR SYSTEM, INC.
VOL.98089 PG.03138

(TRACT 1)
TOWN OF ADDISON, TX
VOL.97247 PG.04072

(TRACT 2)
TOWN OF ADDISON, TX
VOL.97247 PG.04072

LOT 1, BLOCK 1
ADDISON CONFERENCE CENTER-
ADDISON CENTRE THEATRE
VOL.90241 PG.2807

GAYLORD PROPERTIES, LP
VOL.97045 PG.02872

GAYLORD PROPERTIES, LP
VOL.97045 PG.02872

GOODMAN AVENUE
(61' STREET RIGHT-OF-WAY DEDICATION)

GOODMAN AVENUE
(61' R.O.W. - VOL.97101, PG.05801 & VOL.97189, PG.01039)

BLOCK B
LOT 1
1.516 ACRES

BLOCK A
LOT 1
1.133 ACRES

LOT 4, BLOCK B
ADDISON CIRCLE PHASE I
VOL.97101 PG.05801
VOL.97189 PG.01039

ADDISON CIRCLE PHASE ONE, LTD.
VOL.95249 PG.01591

MORRIS AVENUE
(VARIABLE WIDTH STREET
RIGHT-OF-WAY DEDICATION)

MORRIS AVENUE (61' R.O.W. - VOL.97101, PG.05801 & VOL.97189, PG.01039)

(DIRECTIONAL CONTROL LINE)
S 89°53'55"W 259.57'

POINT OF BEGINNING
1/2" IRON ROD FOUND w/ HUITT-ZOLLARS CAP
(CONTROL MONUMENT)
S 89°53'55"W 25.00'

POINT OF COMMENCING
606 NAIL FOUND IN BASE OF FENCE POST

10' SETBACK, DRAINAGE &
UTILITY DRAINAGE EASEMENT
VOL.96180, PG.05233

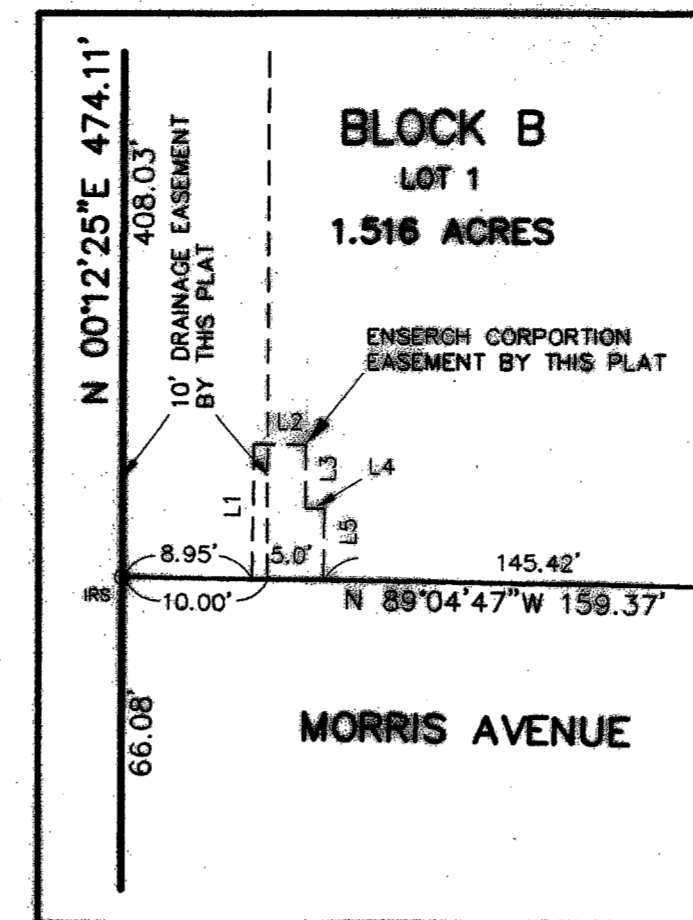
LOT 1, BLOCK B
ADDISON CIRCLE PHASE I
VOL.97101 PG.05801
VOL.97189 PG.01039

ADDISON CIRCLE PHASE ONE, LTD.
VOL.95249 PG.01591

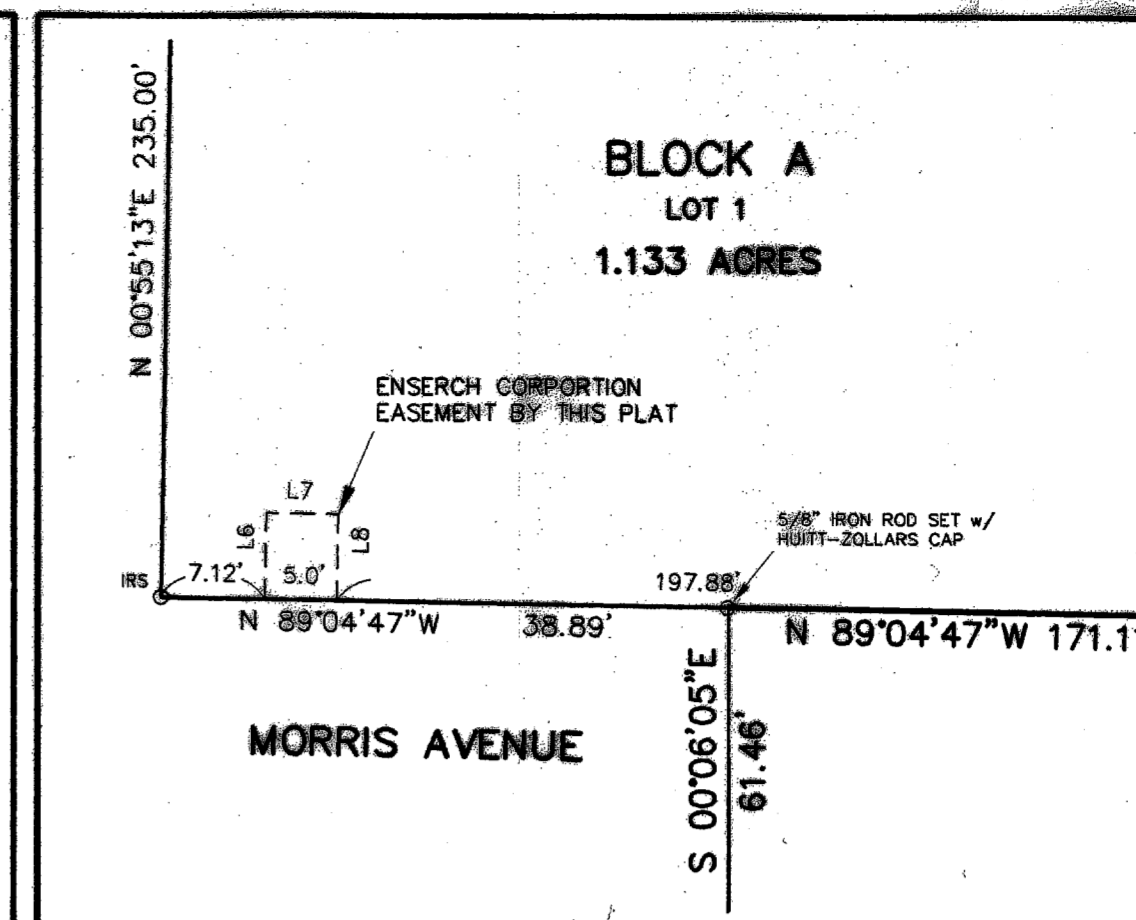
EDWARD COOK SURVEY, ABST. NO. 326
G.W. FISHER SURVEY, ABST. NO. 482

(DALLAS COUNTY - VOL.1987, PG.439)
(DALLAS COUNTY - VOL.2028, PG.215)

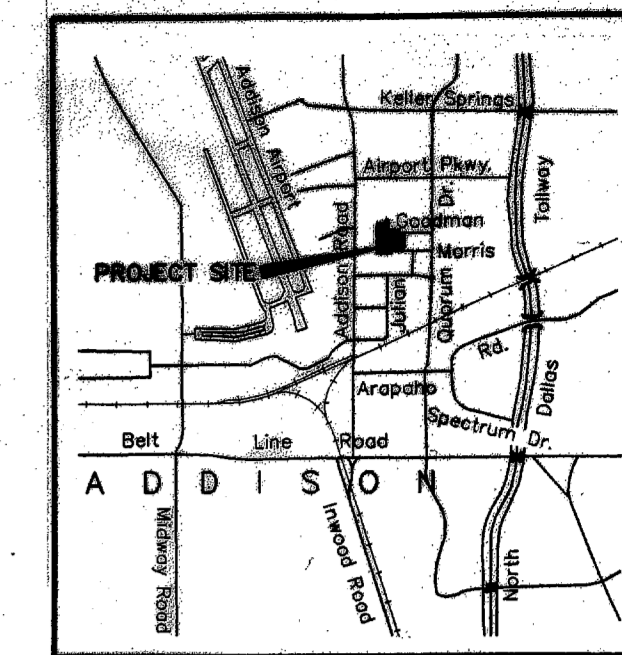
ADDISON ROAD
(60' R.O.W.)



DETAIL 1



DETAIL 2



LOCATION MAP
NTS



BASIS OF BEARINGS / DIRECTIONAL CONTROL:

A BEARING OF S 89°53'55"W BETWEEN TWO 1/2 INCH IRON RODS FOUND WITH HUITT-ZOLLARS CAP ALONG THE SOUTH LINE OF TRACT II AS DESCRIBED IN INSTRUMENT TO GAYLORD PROPERTIES, LP AS RECORDED IN VOLUME 97045, PAGE 02872, DEED RECORDS OF DALLAS COUNTY, TEXAS.

COURSE	BEARING	DISTANCE
L1	N 00°55'13"E	9.50'
L2	S 89°04'47"E	3.64'
L3	S 00°55'13"W	4.50'
L4	S 89°04'47"E	1.36'
L5	S 00°55'13"W	5.00'
L6	N 00°55'13"E	6.00'
L7	S 89°04'47"E	5.00'
L8	S 00°55'13"W	6.00'

THIS PLAT INCLUDES CONTIGUOUS EASEMENT AREAS OUTSIDE THE LIMITS OF THE BLOCKS WHICH ARE BEING DEDICATED BY THIS PLAT.

ALL EASEMENTS INDICATED AS "TEMPORARY" SHOWN HEREON ARE TO REMAIN IN AFFECT UNTIL EXPRESSLY ABANDONED BY A NOTATION ON THIS PLAT OR FUTURE PLATS OR OTHER LEGAL DOCUMENTS.

FINAL PLAT
ADDISON CIRCLE PHASE III
3.923 ACRES SITUATED IN THE
G.W. FISHER SURVEY, ABSTRACT NO. 482
TOWN OF ADDISON, DALLAS COUNTY, TEXAS

VOL 99140
PAGE 00096

99 JUL 20 PM 2:55
DALLAS COUNTY CLERK

WITT PLACE
(45' R.O.W. - VOL.97101, PG.05801 & VOL.97189, PG.01039)

PREPARED FOR
POST PROPERTIES, INC.
15851 DALLAS PARKWAY
SUITE 855
ADDISON, TEXAS 75001

MAY 1, 1999
Sheet No.
1 OF 2
Project No.
01-1932-33

HUITT-ZOLLARS
Huitt-Zollars, Inc. Engineering / Architecture
3131 McKinney Ave., Ste. 600 Dallas, Texas 75204
Phone (214) 871-3311 Fax (214) 871-0757