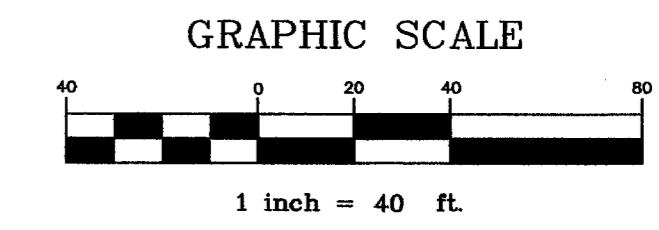
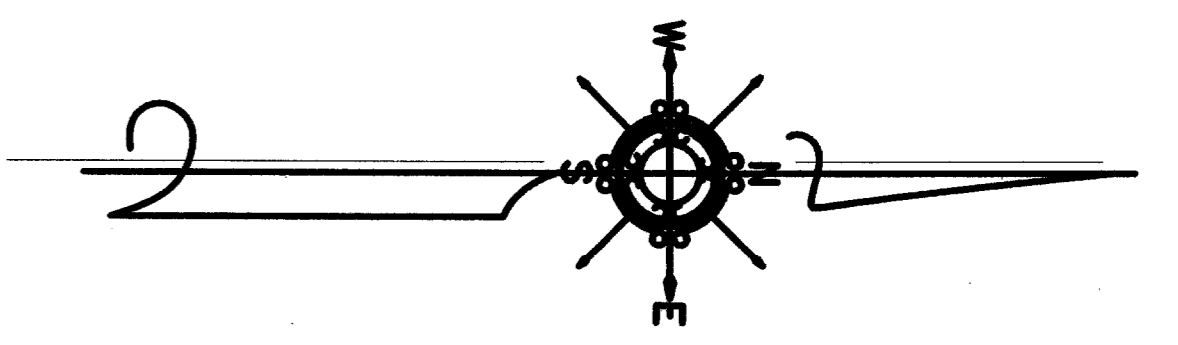
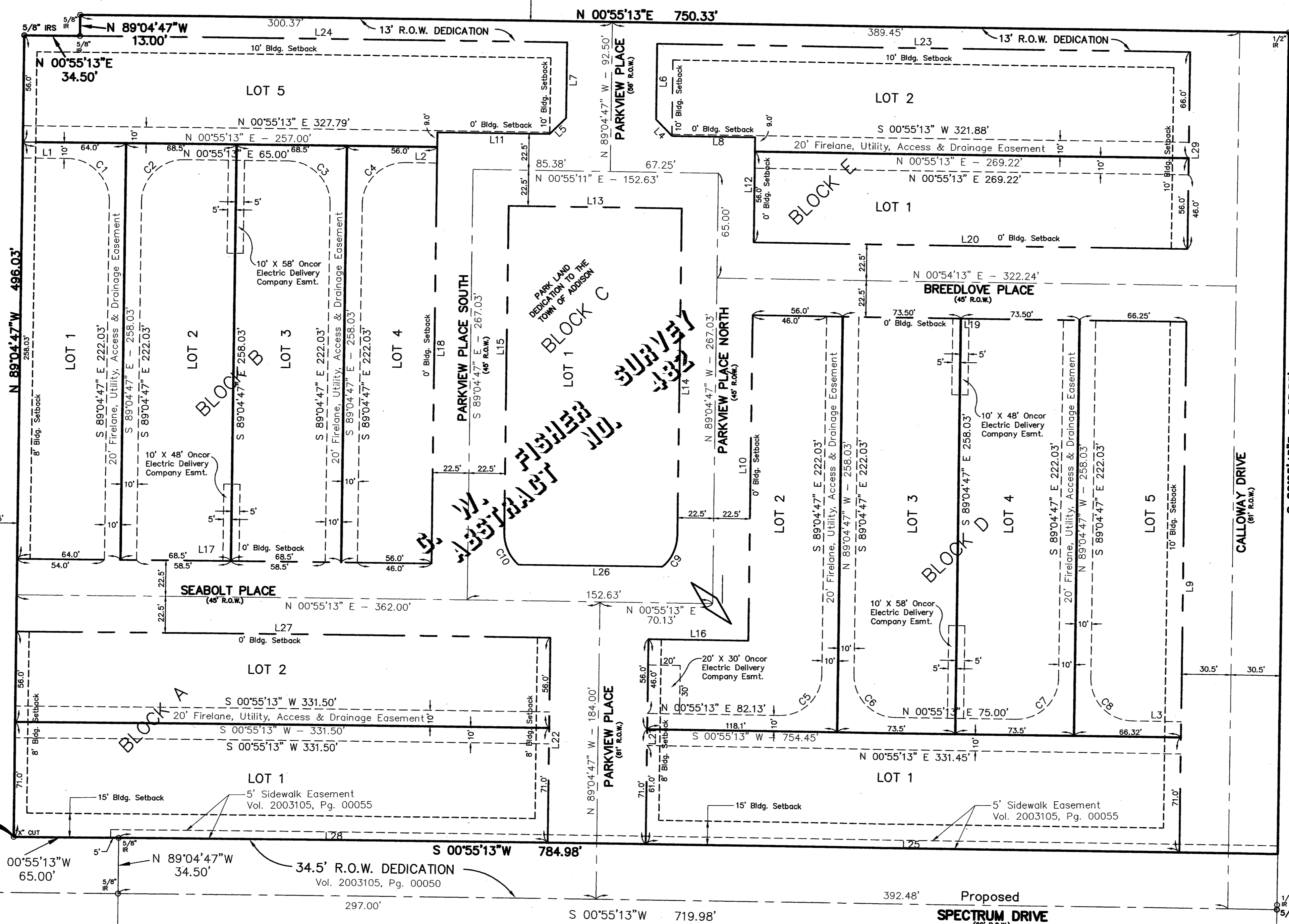


TRACT 1
8.919 ACRES
TEXOK PROPERTIES, L.P.
VOL. 2002240, PG.3529

SOUTH & WESTERN ADDITION
VOL. 96140, PG. 3247



QUORUM DRIVE
(PROPOSED 80' R.O.W.)



EASEMENT LINE TABLE

NUMBER	BEARING	DIST
L1	S 00°55'13" W	28.00'
L2	S 00°55'13" W	20.00'
L3	S 00°55'13" W	30.32'

EASEMENT CURVE TABLE

NUMBER	DELTA	RADIUS	ARC LENGTH	CHORD BRNG	CHORD LENGTH
C1	90°00'00"	26.00	40.84	S 45°55'13" W	36.77
C2	90°00'00"	26.00	40.84	S 44°04'47" E	36.77
C3	90°00'00"	26.00	40.84	S 45°55'13" W	36.77
C4	90°00'00"	26.00	40.84	S 44°04'47" E	36.77
C5	90°00'00"	26.00	40.84	N 44°04'47" W	36.77
C6	90°00'00"	26.00	40.84	N 45°55'13" E	36.77
C7	90°00'00"	26.00	40.84	N 44°04'47" W	36.77
C8	90°00'00"	26.00	40.84	N 45°55'13" E	36.77
C9	49°52'51"	25.50'	22.20'	S 64°08'21" E	21.51'
C10	49°52'51"	25.50'	22.20'	N 65°58'48" E	21.51'

LOT LINE TABLE

NUMBER	BEARING	DIST
L4	N 45°55'12" E	14.26'
L5	N 44°04'48" W	14.26'
L6	N 89°04'47" W	46.92'
L7	N 89°04'47" W	46.92'
L8	N 00°55'13" E	51.67'
L9	S 89°05'45" E	329.03'
L10	S 89°04'47" E	202.03'
L11	N 00°55'13" E	69.80'
L12	S 89°04'47" E	65.00'
L13	N 00°55'13" E	107.63'
L14	S 89°04'47" E	202.61'
L15	S 89°04'47" E	202.61'
L16	N 00°55'13" E	62.13'
L17	S 00°55'13" W	257.00'
L18	N 89°04'47" W	267.03'
L19	N 00°55'13" E	269.25'
L20	N 00°55'13" E	269.24'
L21	N 89°04'47" W	127.00'
L22	N 89°04'47" W	127.00'
L23	N 00°55'13" E	330.96'
L24	N 00°55'13" E	302.38'
L25	S 00°55'13" W	331.47'
L26	S 00°55'13" W	89.49'
L27	N 00°55'13" E	331.50'
L28	S 00°55'13" W	266.50'
L29	S 89°05'45" E	122.00'

QUORUM EAST ADDITION
VOL. 98001, PG. 33

MILDRED PLACE
(45' R.O.W.)

AMENDED ADDISON CIRCLE PHASE II
VOL. 2000033, PG. 16
LOT 1, BLOCK D

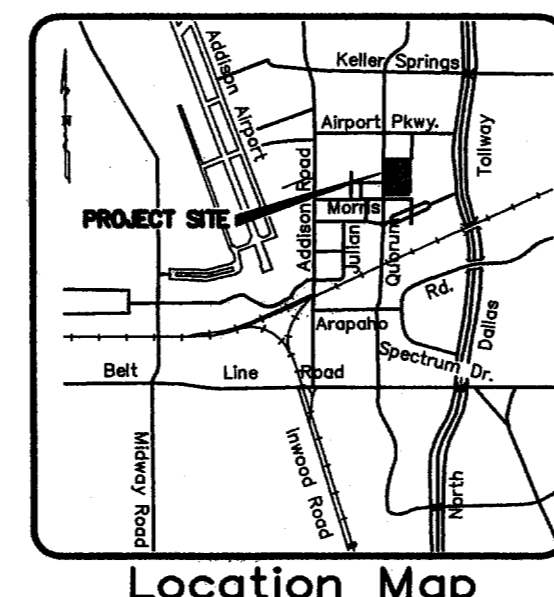
POINT OF BEGINNING

SPECTRUM DRIVE
(60' R.O.W.)

THE ASHTON
VOL. 2000036, PG. 2913
LOT 1, BLOCK A

(3.371 AC.)
THE STAUBACH COMPANY
VOL. 2000046, PG. 2903

TRACT 3
7.106 ACRES
TEXOK PROPERTIES, L.P.
VOL. 2002240, PG.3529



Location Map

15851 DALLAS NORTH
PARKWAY ADDITION
VOL. 85021, PG. 1686

FINAL PLAT
PARK VIEW AT ADDISON CIRCLE

LOTS 1 & 2, BLOCK A, LOTS 1 thru 5, BLOCK B,
LOT 1, BLOCK C, LOTS 1 thru 5, BLOCK D,
and LOTS 1 and 2, BLOCK E
9.016 ACRES

G.W. FISHER SURVEY ABSTRACT No. 482
TOWN OF ADDISON, DALLAS COUNTY, TEXAS

OWNER
CENTEX HOMES
2800 SURVEYOR BOULEVARD
CARROLLTON, TEXAS 75006
(972)417-3562

SURVEYOR
BROCKETTE-DAVIS-DRAKE, INC.
4144 NORTH CENTRAL EXPRESSWAY
SUITE 1100
DALLAS, TEXAS 75204
(214)824-3647
(214)824-7064 (fax)

May, 2004

Copyright 2003 Brockett/Davis/Drake, Inc. All Rights Reserved.
This plat was prepared by G.W. Fisher Surveyors, Inc. under the supervision of G.W. Fisher, a Licensed Professional Surveyor in the State of Texas. Any modification or use of this drawing without the express written authorization of Brockett/Davis/Drake, Inc. is prohibited.

003393/FINAL PLAT/003393.FP.DWG