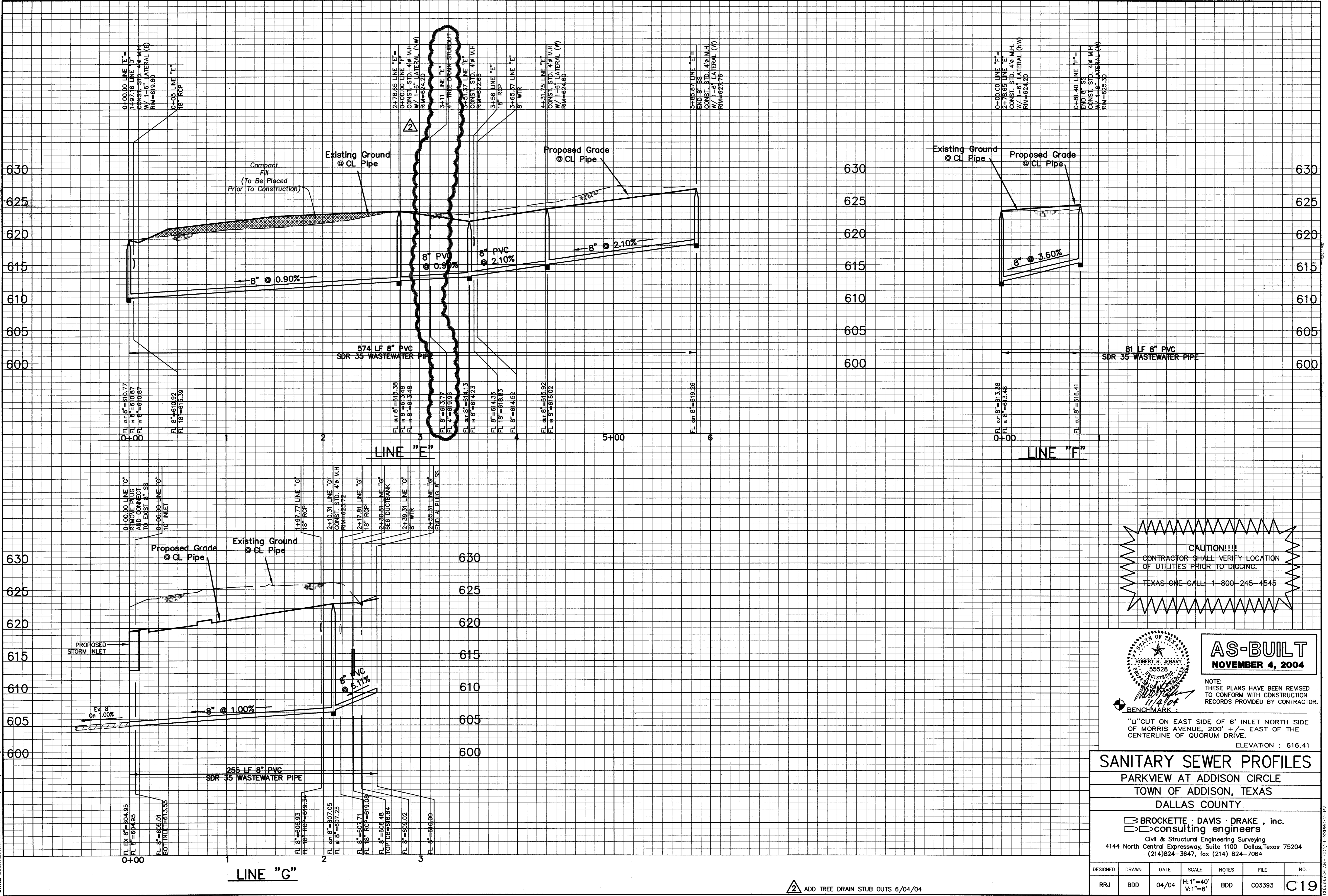
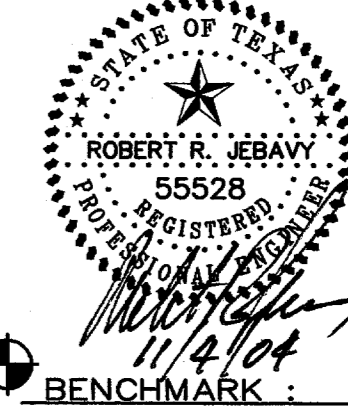


© Copyright 2003 Brockette/Davis/Drake, Inc. All Rights Reserved. No part of this drawing may be reproduced, stored in a retrieval system, or used in any form or by any means, without the express written authorization of Brockette/Davis/Drake, Inc. is prohibited.



**CAUTION!!!!**  
 CONTRACTOR SHALL VERIFY LOCATION OF UTILITIES PRIOR TO DIGGING.  
 TEXAS ONE CALL: 1-800-245-4545



**AS-BUILT**  
 NOVEMBER 4, 2004

NOTE:  
 THESE PLANS HAVE BEEN REVISED TO CONFORM WITH CONSTRUCTION RECORDS PROVIDED BY CONTRACTOR.

BENCHMARK:  
 "D" CUT ON EAST SIDE OF 6" INLET NORTH SIDE OF MORRIS AVENUE, 200' +/- EAST OF THE CENTERLINE OF QUORUM DRIVE.  
 ELEVATION : 616.41

**SANITARY SEWER PROFILES**  
 PARKVIEW AT ADDISON CIRCLE  
 TOWN OF ADDISON, TEXAS  
 DALLAS COUNTY

**BROCKETTE · DAVIS · DRAKE , inc.**  
 consulting engineers  
 Civil & Structural Engineering · Surveying  
 4144 North Central Expressway, Suite 1100 Dallas, Texas 75204  
 (214)824-3647, fax (214) 824-7064

DESIGNED	DRAWN	DATE	SCALE	NOTES	FILE	NO.
RRJ	BDD	04/04	H: 1"=40' V: 1"=6'	BDD	C03393	C19