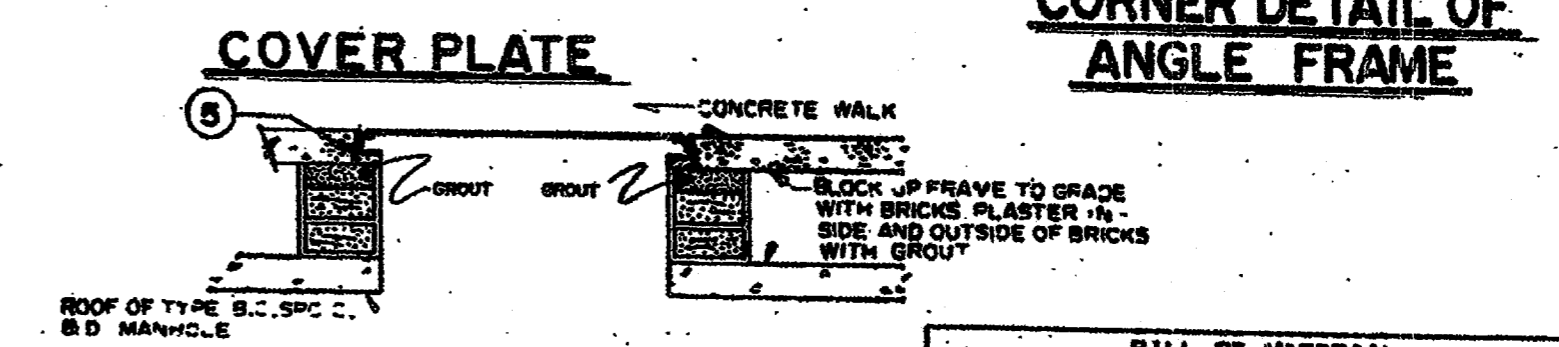
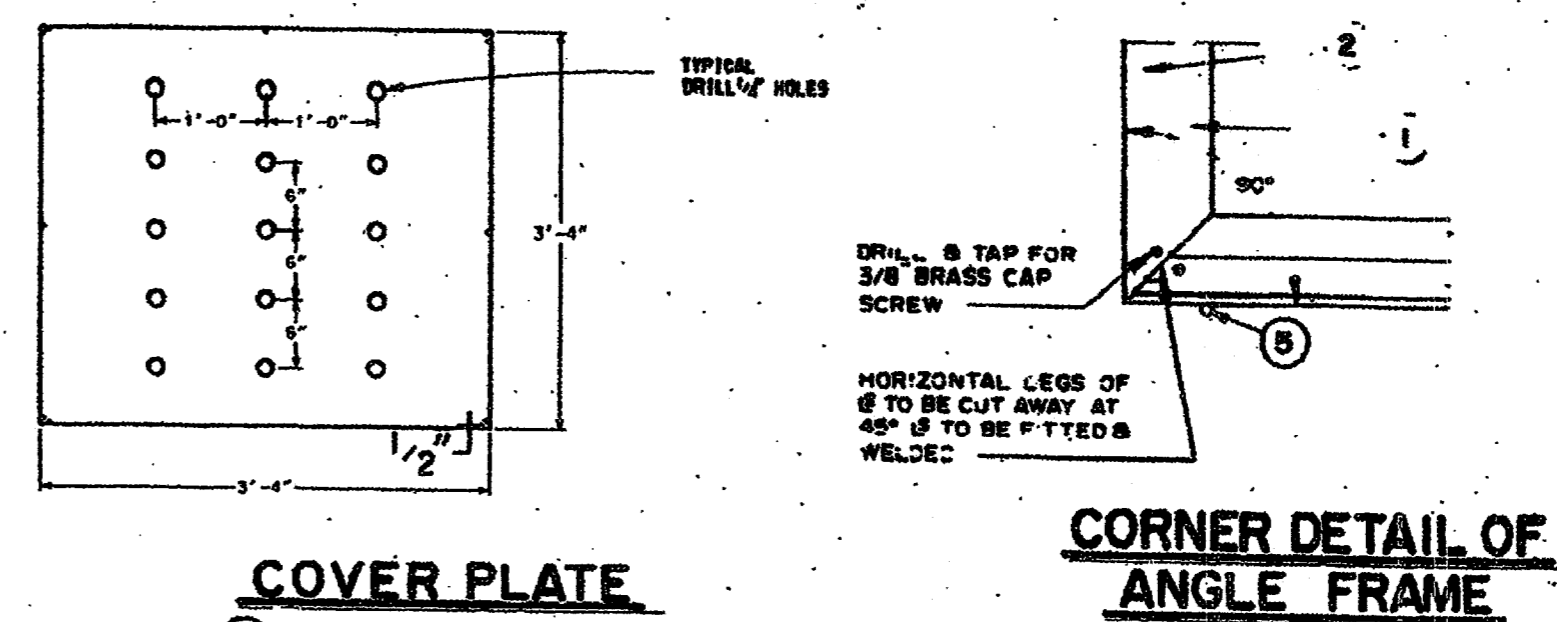
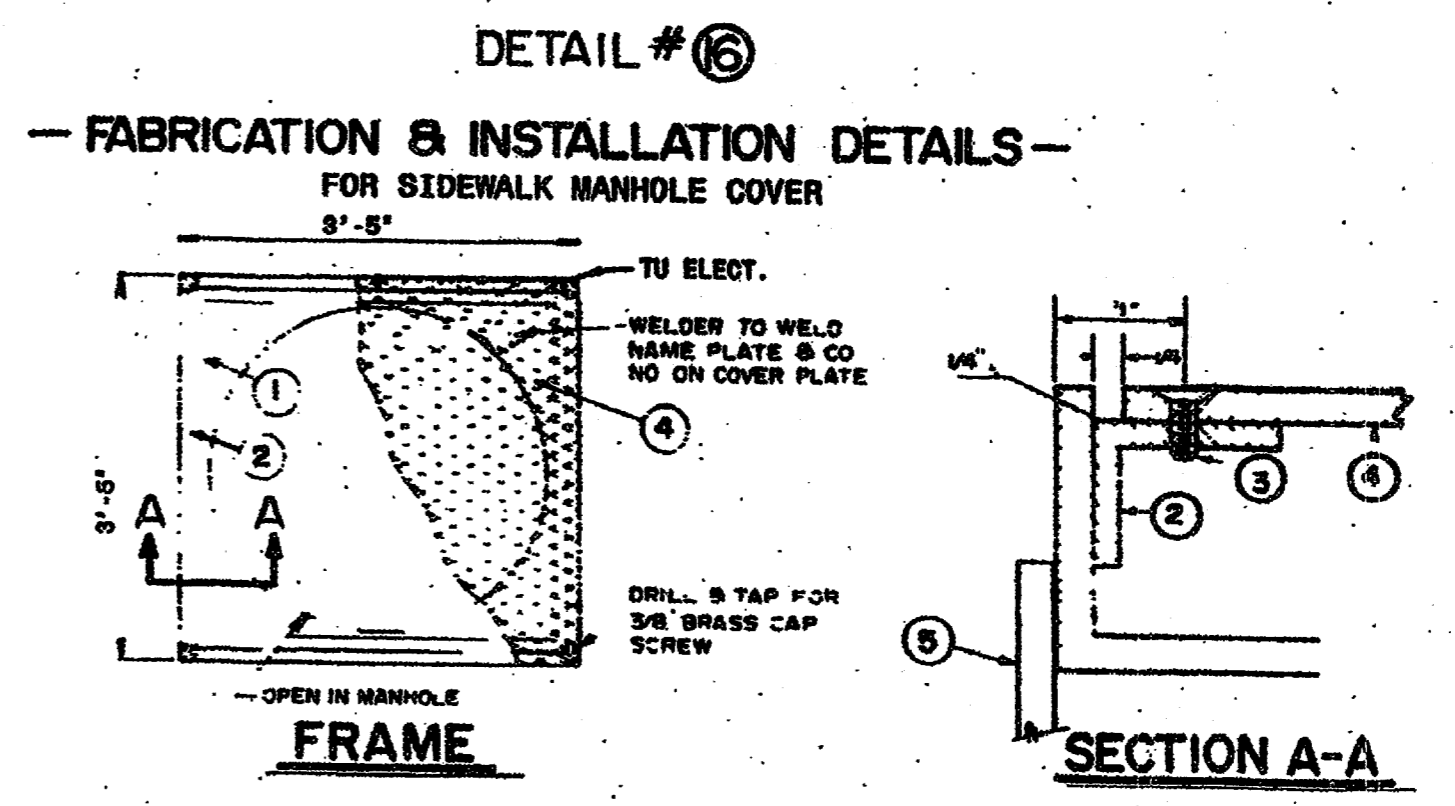
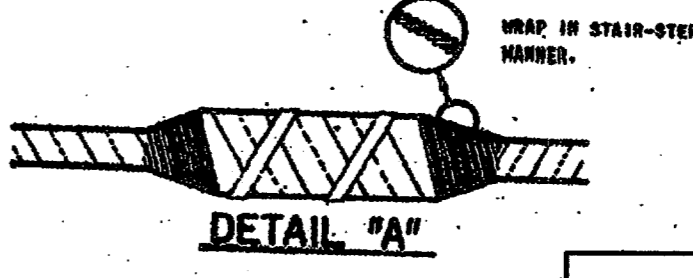
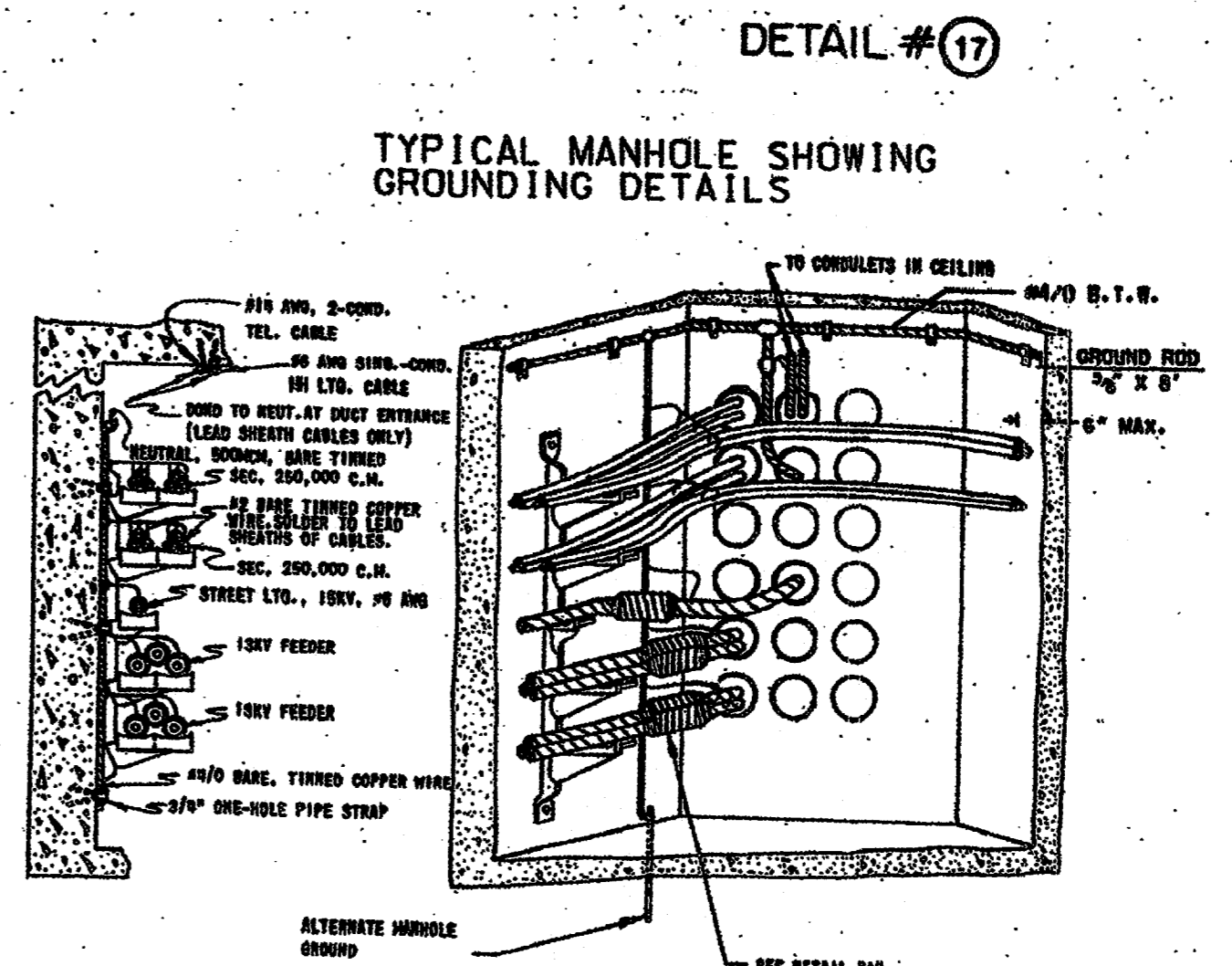


**GENERAL NOTES**  
BEARING SURFACE BETWEEN COVER AND FRAME SHALL BE MACHINED.  
COVER AND FRAME SHALL BE CONSTRUCTED TO H-20 TRAFFIC LOADING.  
COVER AND FRAME SHALL BE CONSTRUCTED OF GRAY CAST IRON.  
MANHOLE COVER AND FRAME SHALL NOT EXCEED 700 LBS.



ITEM QUAN.	DESCRIPTION	STR. NO.
1	4 2 1/2" x 2 1/2" x 1/2" 3" x 3" LENS	
2	4 1 1/2" x 1 1/2" x 1/2" 2 1/2" x 2 1/2" LENS	
3	2 1/2" x 1 1/2" 3/8 BRASS CAP SCREW	
4	1 3" x 1 1/2" x 1/2" 2 1/2" x 2 1/2" NO SKI STEEL PLATE	
5	4 1/2" DIA. - 2 1/2"	



**AS-BUILT**  
NOVEMBER 4, 2004  
NOTE: THESE PLANS HAVE BEEN REVISED TO CONFORM WITH CONSTRUCTION RECORDS PROVIDED BY CONTRACTOR.

TU ELECTRIC		CD	
UNIT ID	DATE	NO.	DATE
REVISION DESCRIPTION	DATE	NO.	DATE
DRWN	CH.	APP.	APP.
ESTIMATE	M.A.	APP. PRN	APP. PRN
LIST OF DRAWINGS	ENG. JRC	APP. JES	APP. PRN
SCALE (1/4"=1'-0" SCALE)	CONV. MED	CH. JRC	DATE 05-12-92
NETWORK UNDERGROUND APPURTENANCE SHEETS MISCELLANEOUS DETAILS			
E-NUA-1 SHEET NO.			

© Copyright 2003 Brockett/Davis/Trake, Inc. All Rights Reserved. This drawing is the property of Brockett/Davis/Trake, Inc. and is not to be reproduced or used in any manner without written authorization of Brockett/Davis/Trake, Inc. is prohibited.