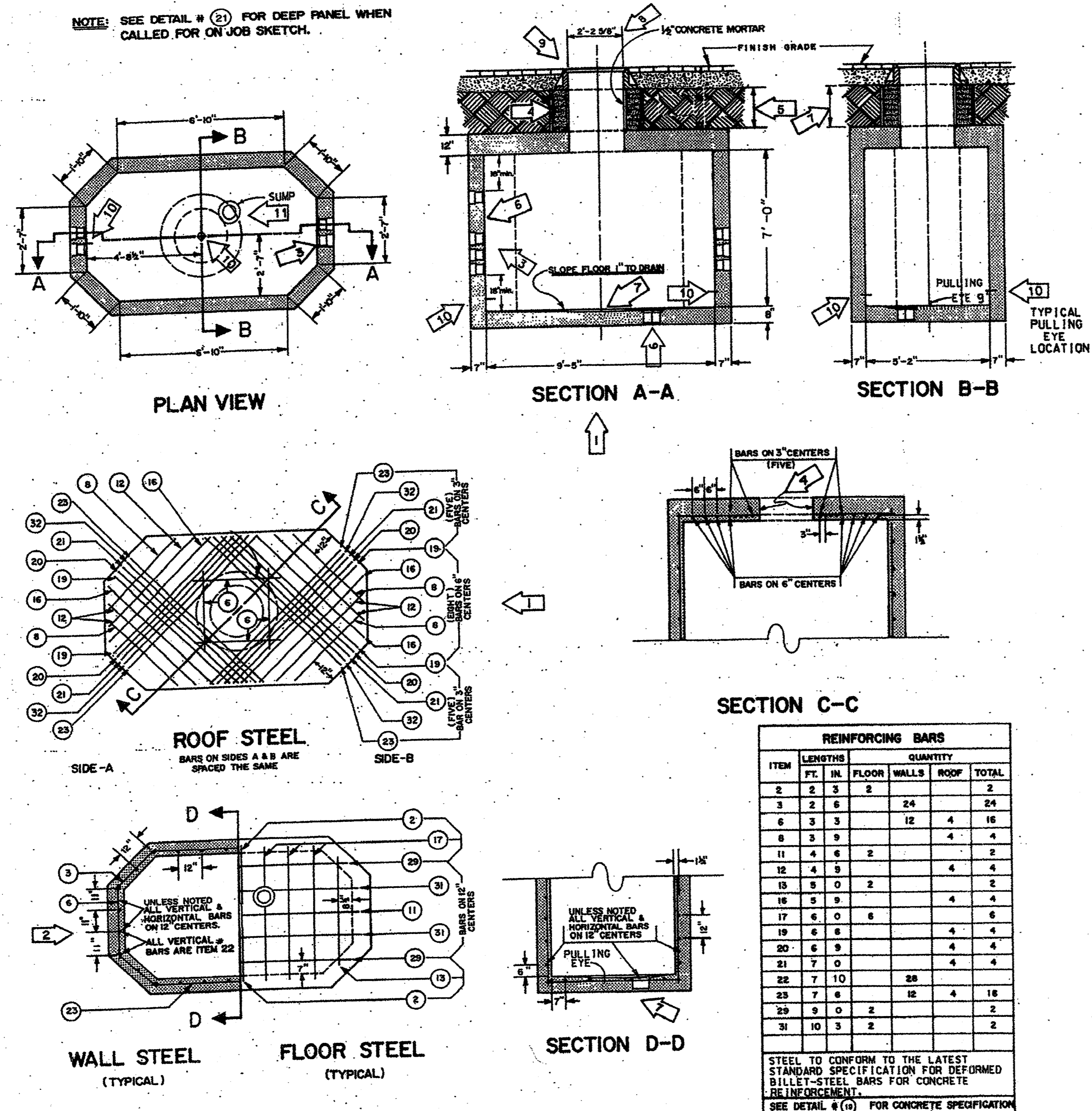
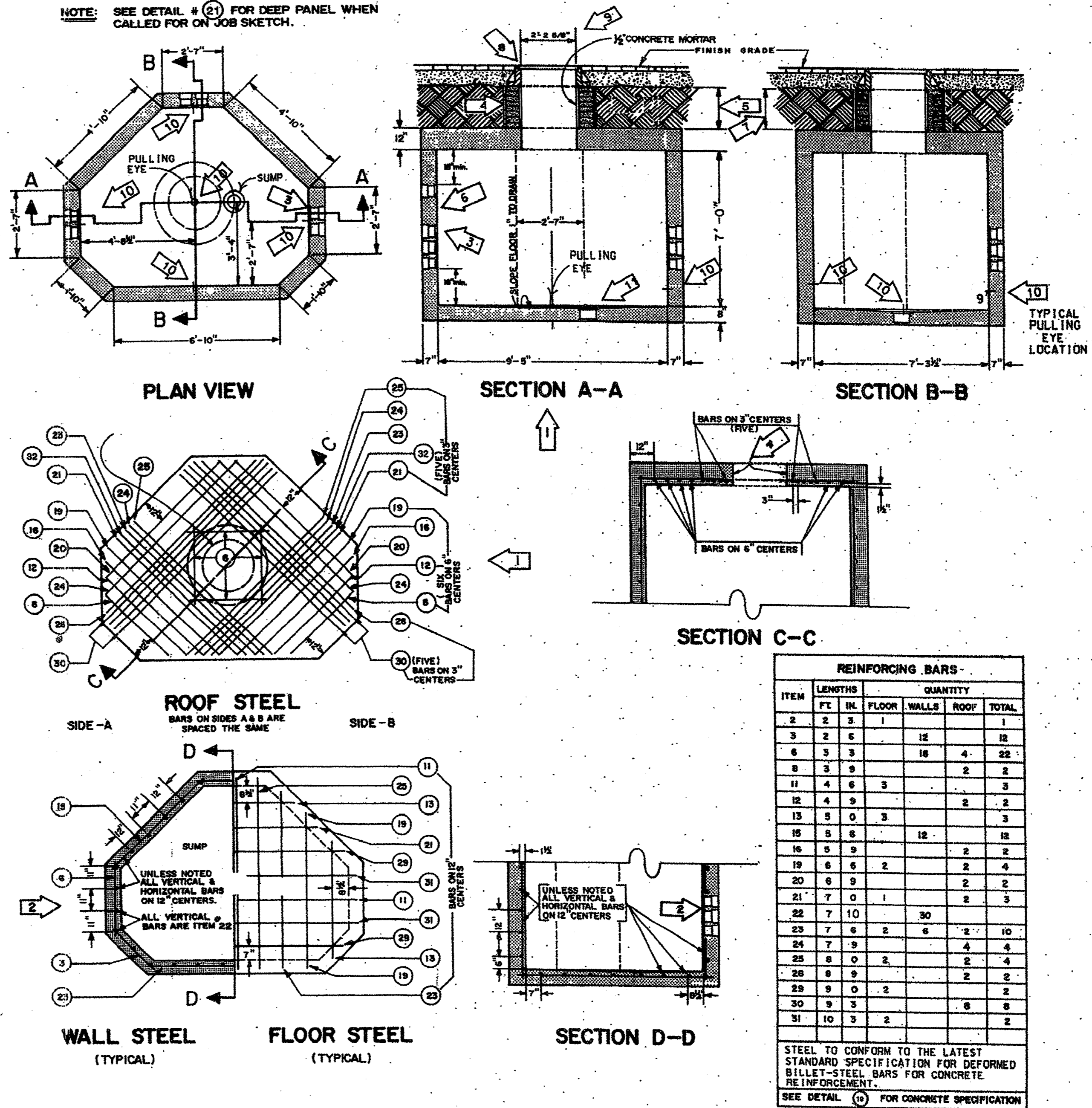


— TYPE "B" MANHOLE —  
DETAIL #1



— TYPE "C" MANHOLE —  
DETAIL #2



— GENERAL NOTES —

- ALL GENERAL NOTES APPLY TO BOTH TYPE "B" & "C" MANHOLES
- 1 STANDARD HEADROOM - 7'-0"
  - 2 ALL REINFORCING BARS TO BE #5 DEFORMED BARS. ALL BARS TO HAVE MINIMUM COVER OF 1 1/2". ALL DIMENSIONS ARE TO C. OF BARS. SEE PLANS FOR EXTRA HEADROOM.
  - 3 FIELD CUT STEEL AS REQUIRED FOR TERMINATORS.
  - 4 NUMBER OF TERMINATORS SHOWN ON PLANS INSTALLED IN EACH END PANEL. SEE DETAIL # (8)
  - 4 BLOCK UP CASTING WITH BRICKS TO PAVEMENT GRADE. BRICKWORK TO RECEIVE 1/2" MORTAR COATING INSIDE & OUTSIDE.
  - 5 15/16" MINIMUM CUSHION.
  - 6 FOR GROUNDING DETAILS SEE DETAIL # (17)
  - 7 A PRECAST REINFORCED CONCRETE NECK MAY BE USED WHEN 28" OR MORE. SEE DETAIL # (13)
  - 8 4'-4" x 4'-4" x 6" CONCRETE SLAB AROUND M.H. CASTING WHEN INSTALLED IN UNPAVED AREA. SEE DETAIL # (10)
  - 9 26 1/2" MH CASTING. SEE DETAIL # (16)
  - 10 PULLING EYE. SEE DETAIL # (18)
  - 11 SUMP. SEE DETAIL # (14)

**AS-BUILT**  
NOVEMBER 4, 2004

NOTE:  
THESE PLANS HAVE BEEN REVISED TO CONFORM WITH CONSTRUCTION RECORDS PROVIDED BY CONTRACTOR.

TU ELECTRIC		CD
SCALE	NO. SCALE	LIST OF DRAWINGS
DATE	12-12-91	OWN. IJC
APP. JES	APP. JES	APP. JES
CH. JRC	CH. JRC	CH. JRC
ESTIMATE	W.A.	W.A.
DMG. TYPE	REVISION DESCRIPTION	NO.
UNIT ID	DATE	DATE
NETWORK UNDERGROUND APPURTENANCE SHEETS		MANHOLE DETAILS
E NUA-1		SHEET NO.